

CHURCH AVE.
1098-F. 33
10913-F-33
30376ST

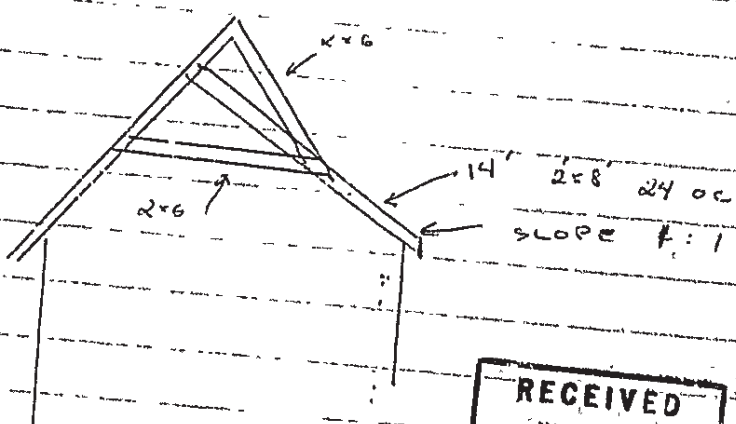
BICKFORD WEBBER HILL
EAST SIDE CLIF ISLAND

6/13/77

PROPOSAL

THOMAS WRIGHT, BUILDER

RAISE LOWER 2/3 OF EAST
SIDE OF PREVIOUS GABLE ROOF IN
ORDER TO PROVIDE SPACE ON 2ND
FLOOR EAST WALL FOR LARGER
WINDOWS, USING 2x8" RAFTERS TO TIE
INTO WEST SIDE RAFTERS CROSSING
CEILING LINE SIMILAR TO A COLLAR BEAM
EXTENDING TO NEW WALL HEIGHT.
RAISED ROOF WILL EXTEND ENTIRE
LENGTH OF HOUSE, 26'



RECEIVED
JUN 19 1977
DEPT. OF BLDG. INSP.
CITY OF PORTLAND

UNFINISHED INTERIOR
NEW WINDOWS 6' 4x6 HEADERS
EST COST ~~3000~~ 4000