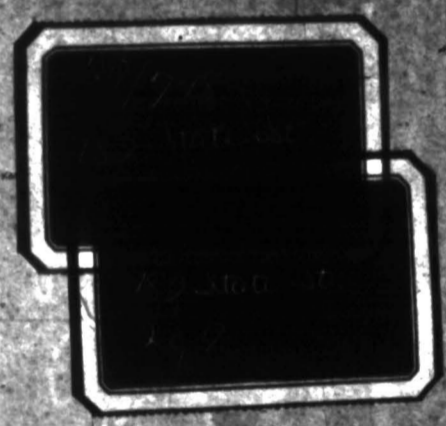
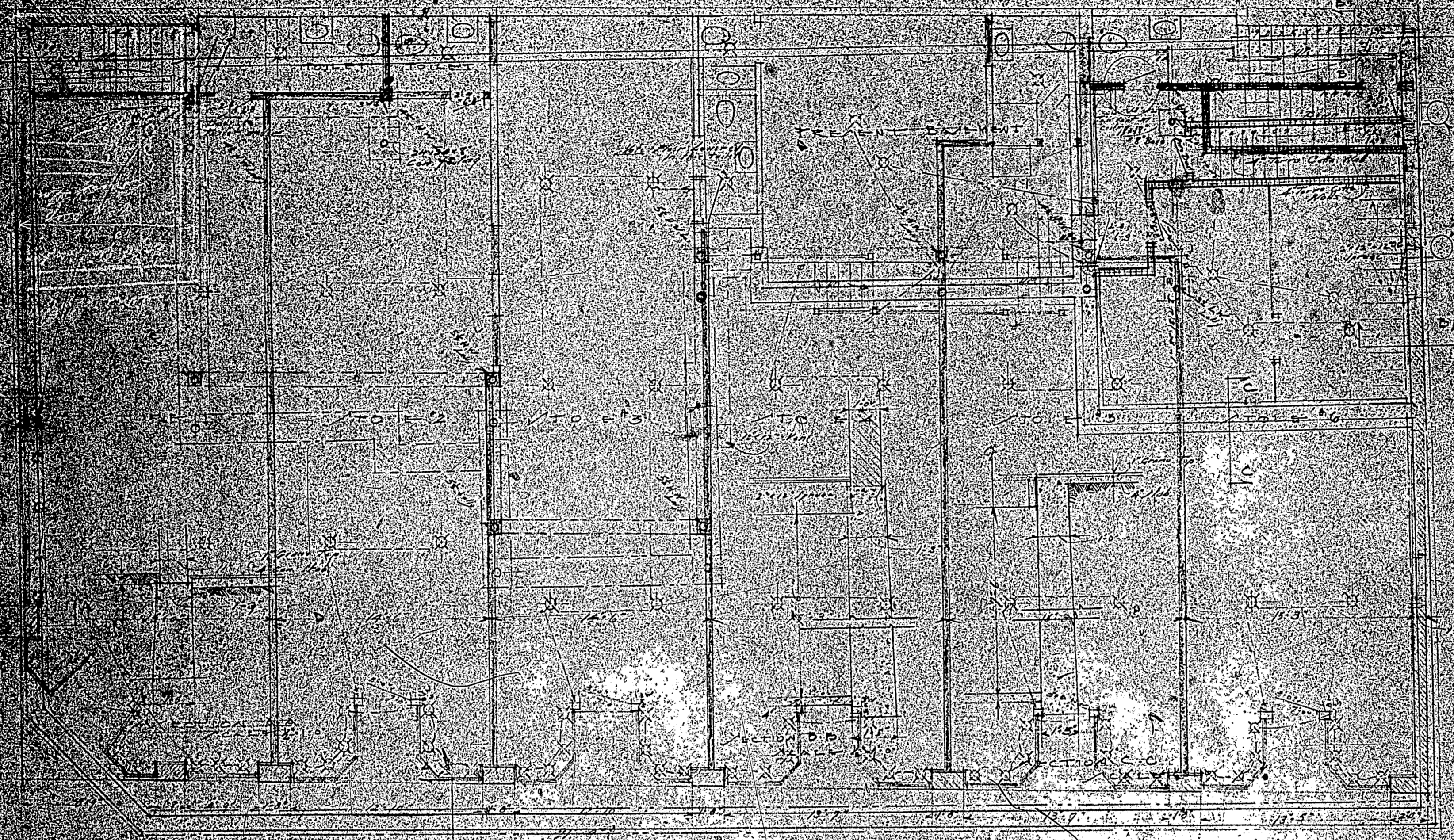


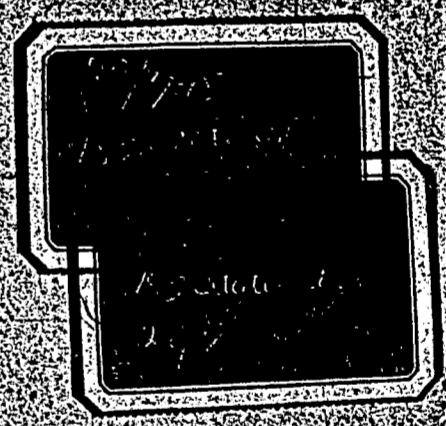
GROUND FLOOR PLAN
 SCALE 1/4" = 1'-0"
 FOUNDATION AND FOUNDATION PLAN
 SCALE 1/4" = 1'-0"

ALTERATIONS TO B.D.C.	
ALTERATION NO.	Job No.
DATE	BY
HERBERT W. BARKER	
ARCHITECT	
PORTLAND	

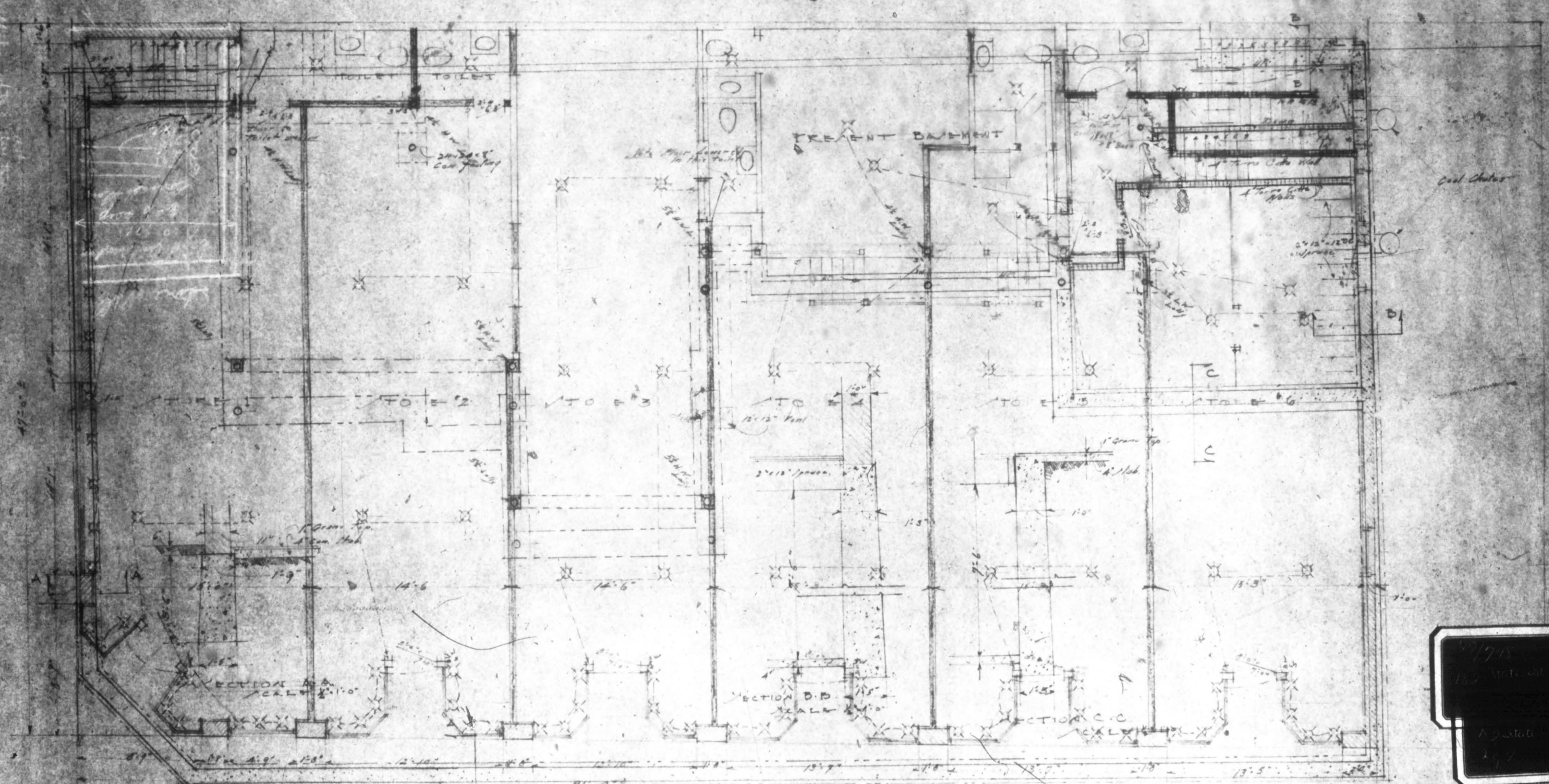




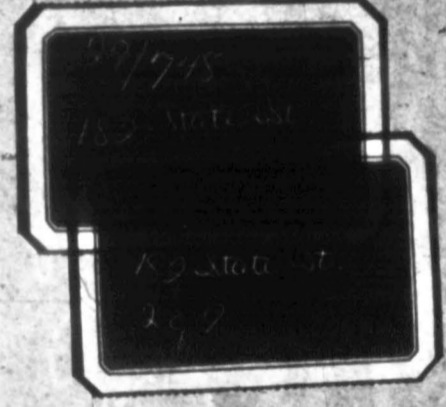
GROUND FLOOR PLAN
 SCALE 1/8" = 1'-0"
 DIMENSION AND FOUNDATION PLAN
 SCALE 1/8" = 1'-0"



DATE	1/10/1910
BY	H. B. W. HANCOCK
CHECKED BY	H. B. W. HANCOCK
SCALE	1/8" = 1'-0"
PROJECT	...

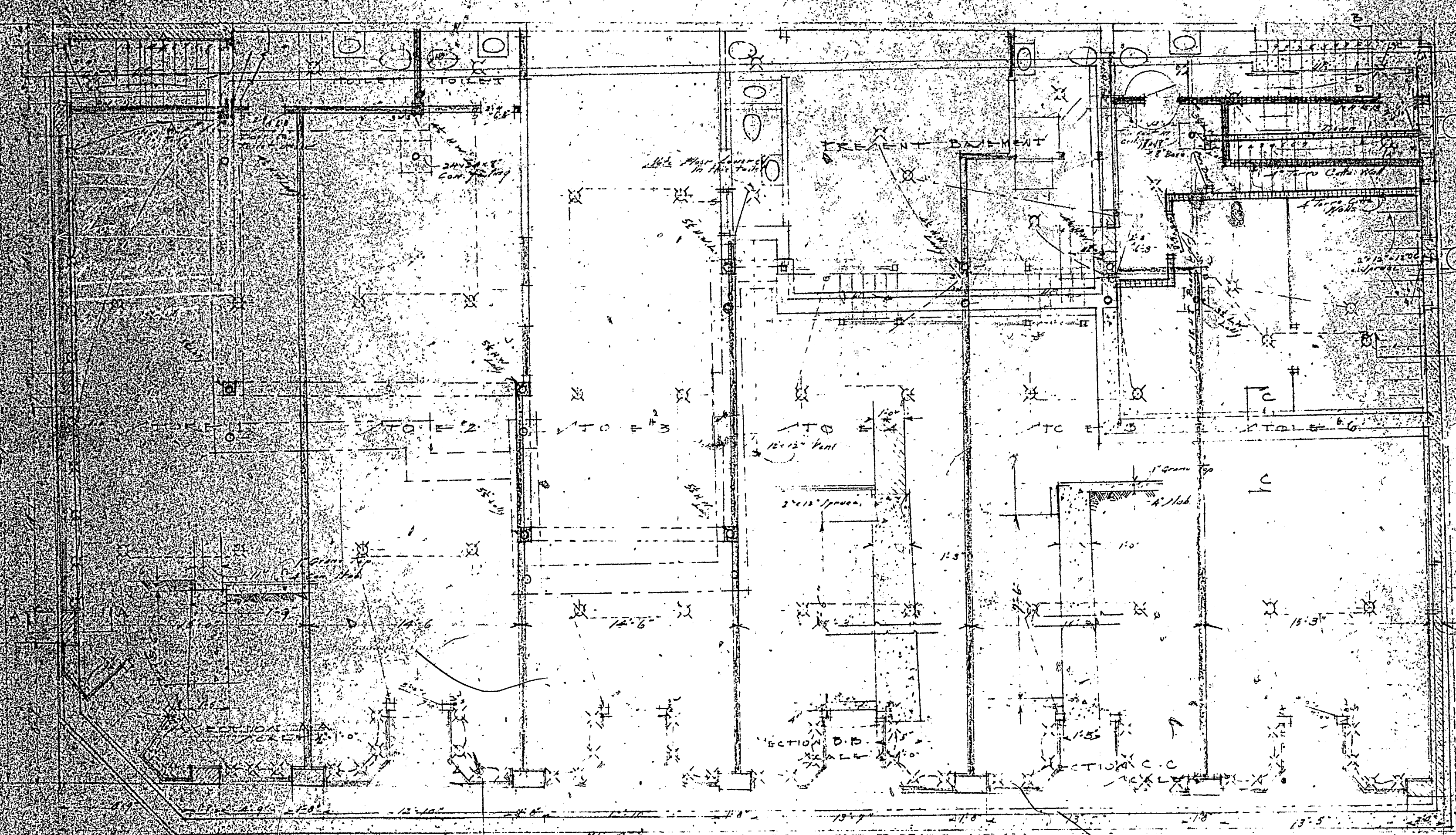


GROUND FLOOR PLAN
 SCALE 1/8" = 1'-0"
 BASEMENT AND FOUNDATION PLAN
 SCALE 1/8" = 1'-0"

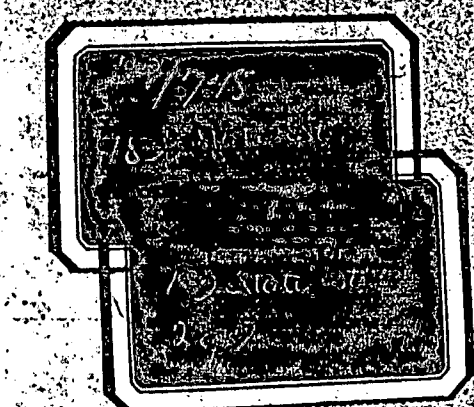


ALTERATIONS TO B.L.D.G.	
ALTERATIONS TO FLOOR PLAN	Job No.
ALTERATIONS TO FOUNDATION PLAN	1000
ALTERATIONS TO BASIN	1000
ALTERATIONS TO TOILETS	1000
ALTERATIONS TO STAIRS	1000
ALTERATIONS TO ROOF	1000
ALTERATIONS TO EXTERIOR	1000
ALTERATIONS TO INTERIOR	1000
ALTERATIONS TO ELECTRICAL	1000
ALTERATIONS TO MECHANICAL	1000
ALTERATIONS TO PLUMBING	1000
ALTERATIONS TO PAINTING	1000
ALTERATIONS TO FINISHES	1000
ALTERATIONS TO SCHEDULE	1000

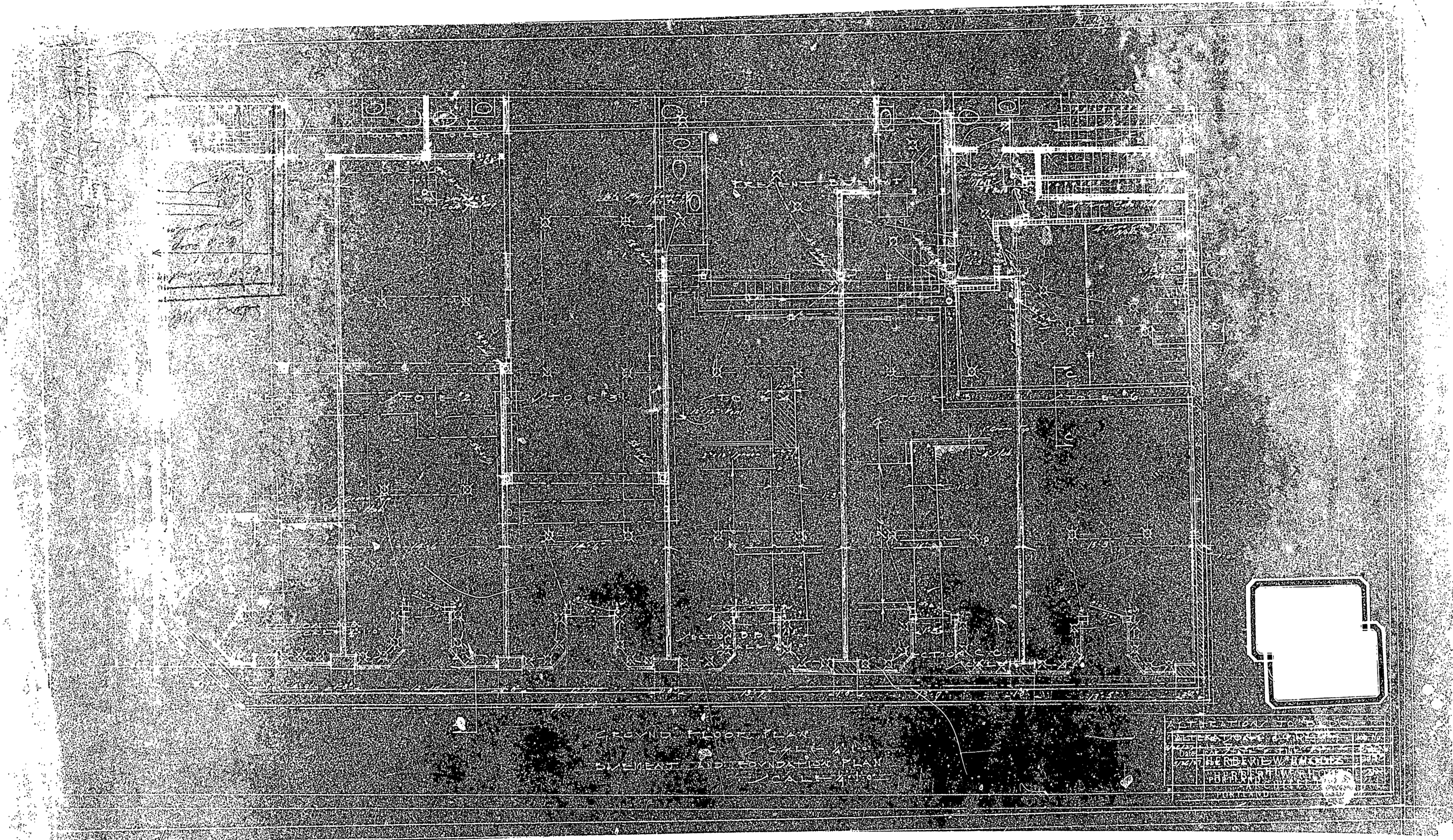
PAUL W. HANCOCK
 ARCHITECT
 PORTLAND, ORE.



FOUND FLOOR PLAN
 ELEMENT AND FOUNDATION PLAN
 SCALE 1/4" = 1'-0"



ALTERATION TO B. D. G. 110	
DATE	Job No.
1912	110
BY	Drawn
HERBERT W. BANGS	110
ARCHT. & ENGRS.	110
PORTLAND, ORE.	110



GROUND FLOOR PLAN
SCALE 1/8" = 1'-0"
BASEMENT AND FOUNDATION PLAN
SCALE 1/4" = 1'-0"

NO.	DESCRIPTION	DATE
1	REVISION	
2	REVISION	
3	REVISION	
4	REVISION	
5	REVISION	
6	REVISION	
7	REVISION	
8	REVISION	
9	REVISION	
10	REVISION	