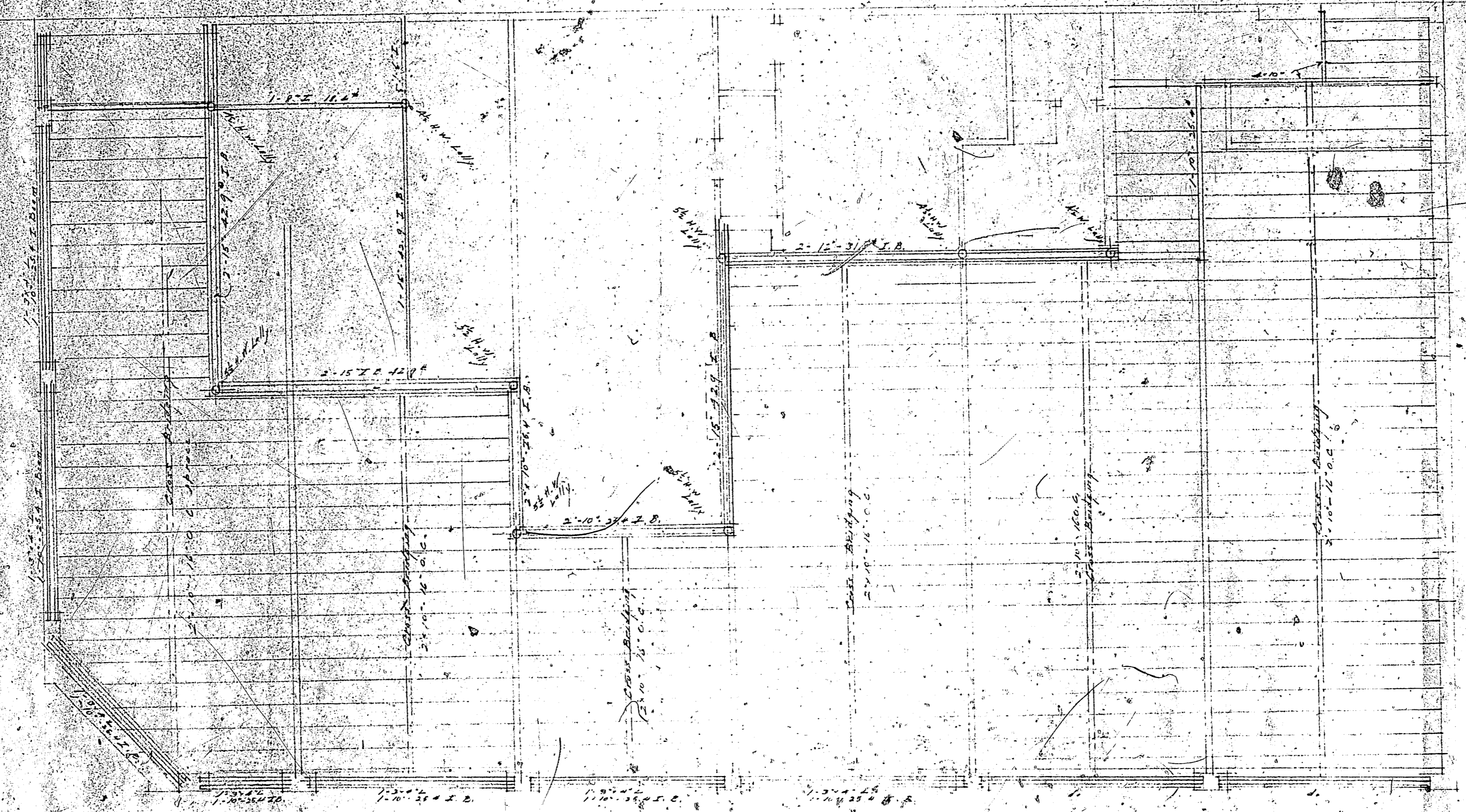
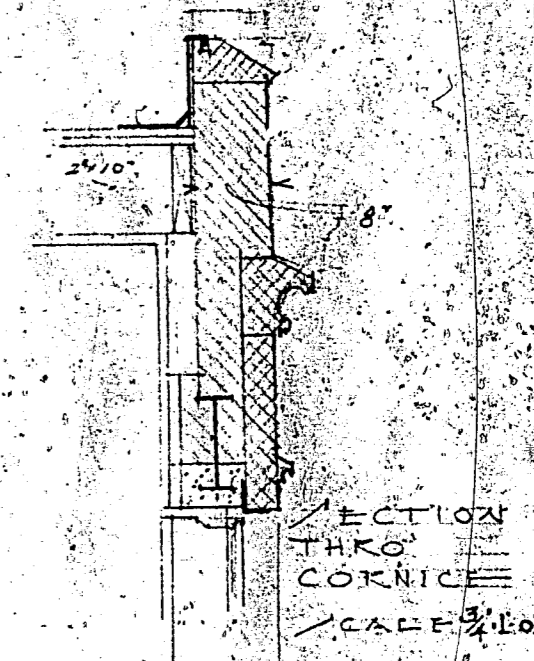


27/748
182 STATE ST



FLOOR FRAMING PLAN

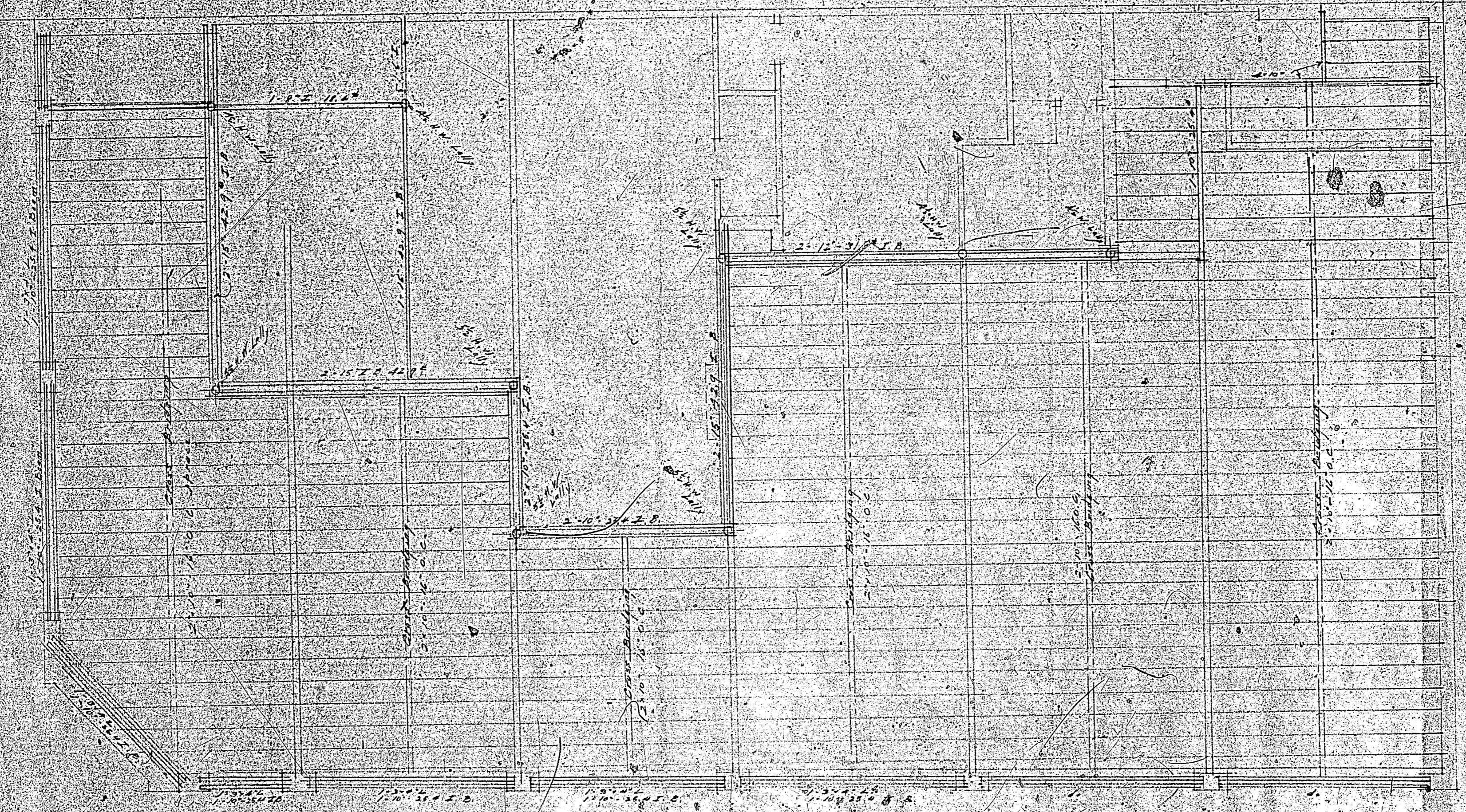


27/748
182 State St
1st fl

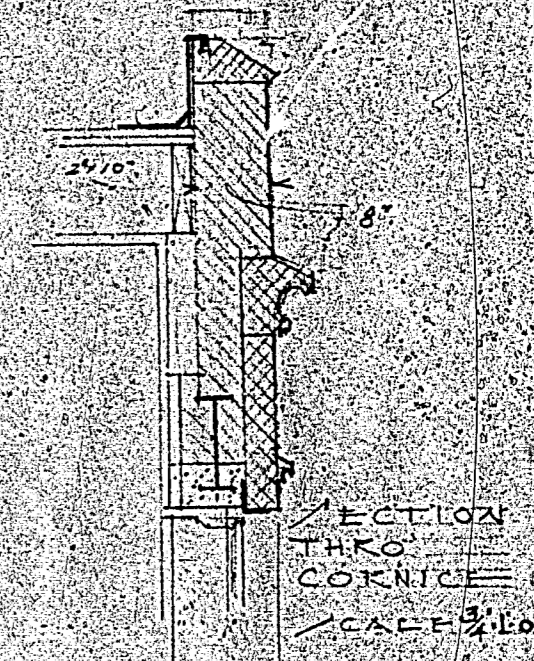
ALTERATION TO BLUE	
FOR STATE & FINE ARTS	JOB NO. 335
FOR DAVID HWATZ	
HERBERT W. RHODES	SHEET 3F
ARCHITECT	
PORTLAND, MAINE	

27/748

27/132 STATA ST
748



FLOOR FRAMING PLAN



27/132
132 Stata St
1927

ALTERATIONS TO DEFS	
FOR STATE OF MAINE	JOB. NO.
FOR DAVID H. WATKINS	338
HERBERT W. RHODES	SHEET
ARCHITECT	73
PORTLAND, MAINE	

27/748