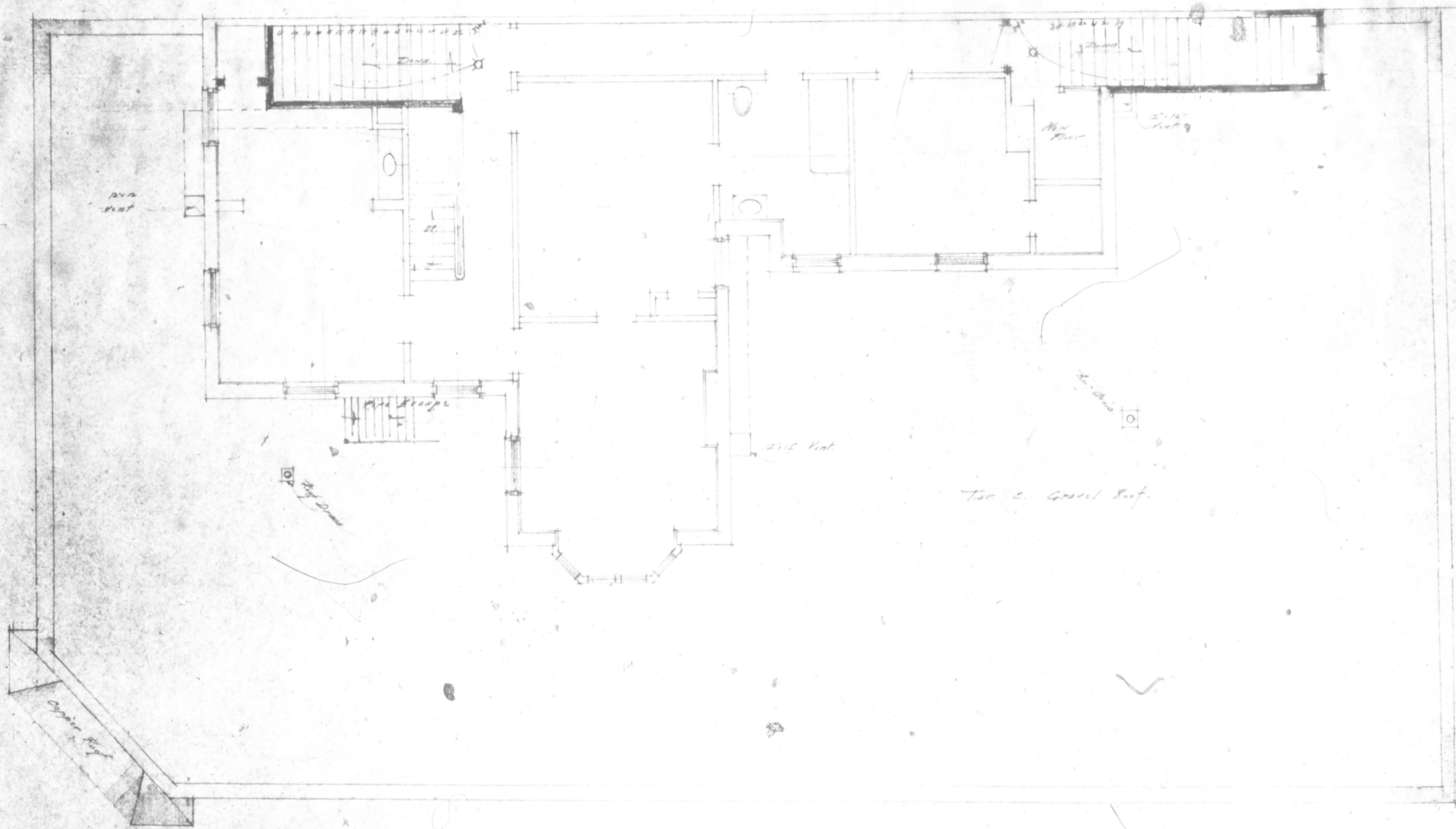


DESIGN FOR BLDG. BY  
 1910-11-10

ALTERATIONS TO BLDG.		
Dates	CON. STATE & PINE ST.	Job. No.
8/10/27	FOR DAVID SHWARTZ	586
HERBERT W. RHODES		Sheet
ARCHITECT		3
PORTLAND, MAINE		





SECOND FLOOR & ELEVATION  
SCALE 1/4" = 1'-0"

Top of Ground Ref.

27/248  
150 St.  
1917

ALTERATIONS TO BLDG.		
Drawn by E.H./37	CONCRETE & FINISH BY DAVID SHWARTZ	Job. No. 550
HERBERT W. RHODES ARCHITECT PORTLAND, MAINE		Sheet 3