

**NOTES:**

VOLTAGE: 277

APPROVED MANUFACTURING DATE

101/104 REVISE OSCO COLORS

REVISIONS:

www.baileysign.com  
 9 Thomas Drive  
 Cal Westbrooke Executive Park  
 Westbrooke, ME 04092  
 207-774-2843 / 1-800-539-5151  
 Fax: 774-1138  
 E-Mail: newsign@baileysign.com  
 © COPYRIGHT 2002

**PLEASE NOTE:**  
 THIS IS A PROGRESS PRINT - FIELD MEASUREMENTS MAY OR MAY NOT NEED TO BE VERIFIED.

THIS DESIGN IS THE EXCLUSIVE PROPERTY OF BAILEY SIGN INCORPORATED AND ALL RIGHTS TO ITS USE OR REPRODUCTION ARE RESERVED.

THE ACCURACY OF THIS COLOR RENDERING IS LIMITED BY MEDIA AND OUTPUT DEVICES AND IS INTENDED FOR REFERENCE USE ONLY. ACTUAL MANUFACTURING GRAPHIC COLORS ALSO VARY DEPENDING ON PROCESSES & MATERIALS USED. 100% COLOR MATCHES OF SUBMITTED SPECIFICATIONS CAN NOT BE GUARANTEED.

IF AN ELECTRIC SIGN, THEN INSTALLATION MUST BE ACCOMPLISHED IN TOTAL COMPLIANCE WITH THE NATIONAL ELECTRICAL CODE. THE REQUIREMENTS OF UNDERWRITERS LABORATORY CANADIAN STANDARDS ASSOCIATION, AND APPLICABLE LOCAL CODES. ALL ELECTRICAL SIGNS REQUIRE ROUTINE MAINTENANCE.

**BAILEY SIGN**

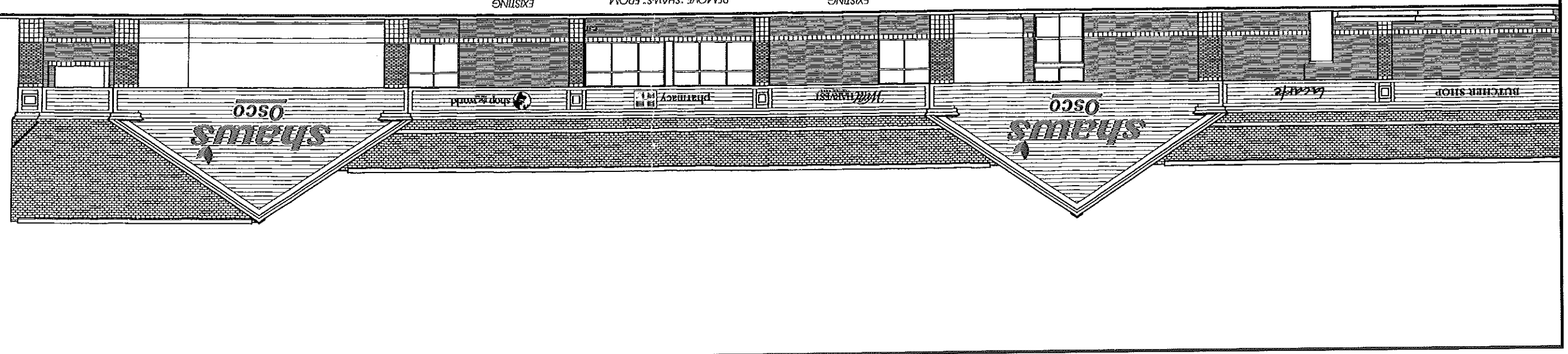
**CLIENT:**  
 ACCEPTANCE SIGNATURE DATE

**CUSTOMER:**  
 SHAW'S  
 91 AUBURN ST.  
 NORTHGATE PLAZA  
 PORTLAND, MAINE

**SALESPERSON:**  
 B.B. DRAWN BY: L.W.M.

W.C. # 3574  
 W.C. # 3683  
 DATE 8/25/04  
 SCALE 1/16"=1'

PROPOSED  
 DRAWING NUMBER  
 BLDG. SIGN WORK SO B-2007 C R1



WEST ELEVATION - BUILDING FRONT  
 SCALE 1/16"=1'

SOUTH ELEVATION - BUILDING LEFT SIDE  
 SCALE 1/16"=1'

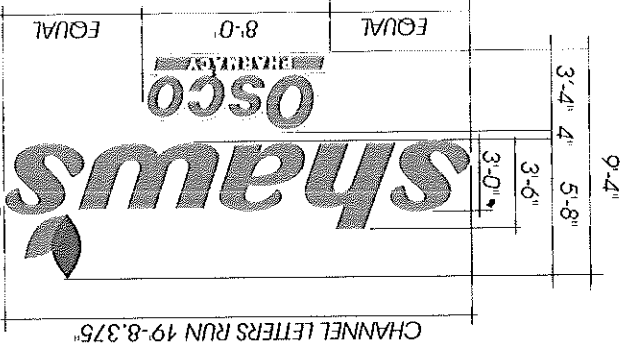
3 SETS OF CHANNEL LETTERS W/ LED ILLUMINATION  
 SCALE: 1/8"=1'

3 LETTERS: 3 1/2" TM CUT-OUTS: ACYLITE ORANGE # GP 303-0  
 1" ORANGE TRIMCAP  
 "SHAW'S" LETTER FACES TO BE ACYLITE ORANGE # GP 303-0

"LEAF LOGO TO BE WHITE ACRYLIC WITH (3) COLORS GREEN VINYL OVERLAY  
 1" TRIMCAP PAINTED TO MATCH (2) RESPECTIVE GREEN FACE COLORS  
 8" DEEP ALUMINUM RETURNS TO BE PAINTED ORANGE PMS # 165  
 INTERNAL LED (RED/ORANGE) ILLUMINATION WITH REMOTE TRANSFORMERS

OSCO LOGO FLAT WHITE ACRYLIC FACE WITH ARLO TRANS. # 44 ORANGE VINYL OVERLAY  
 "OSCO" COPY AND UNDERLINE WITH WHITE "PHARMACY" COPY REMOVED  
 8" DEEP WHITE RETURHS WITH INTERNAL FLUORESCENT ILLUMINATION

22.24 sq ft each  
 64.2 sq ft each



**NOTES:**

ART AND COLORS FOR EXTERIOR ILLUMINATED VINYL GRAPHICS

VINYL FOR SHAW'S LOGO	PMS 165	RYON SERIES 2500/2550/2570	TRANSLUCENT VINYL FILM 44 ORANGE
VINYL FOR SHAW'S LEAF APOSTROPHE	PMS 368	RYON SERIES 2500/2550/2570	TRANSLUCENT VINYL FILM 2586 GREEN
VINYL FOR OSKO LOGO	PMS 377	GERBER HIGH PERFORMANCE	SERIES 230 TRANSLUCENT VMD GREEN
VINYL FOR WILD HARVEST Pylon LOGO	PMS 390	RYONE COLORS A9 TRANSLUCENT	RYONE COLORS A96341 PANTONE 375
	PMS 165	RYON SERIES 2500/2550/2570	TRANSLUCENT VINYL FILM 44 ORANGE
	PMS UNKNOWN	3M #141 GOLD IMAGE	TRANSLUCENT VINYL FILM
	PMS UNKNOWN	3M #76 HOLLY GREEN	TRANSLUCENT VINYL FILM

APPROVED MANUFACTURING	DATE
VOLTAGE: 277	
9/16/04 REVISE LAYOUT	
101_104 AD TM1 / REVISE OSKO COLOR	

REVISIONS:


**Bailey sign**  
www.baileysign.com  
9 Thomas Drive  
Col. Westbrook Executive Park  
Westbrook, ME 04092  
207-774-2843 / 1-800-539-SIGN  
Fax: 774-1193  
E-Mail: newsign@baileysign.com  
© ODP/RIGHT 2002

**PLEASE NOTE:**

THIS IS A PROGRESS PRINT - FIELD MEASUREMENTS MAY OR MAY NOT NEED TO BE VERIFIED.  
SIGN INCORPORATED AND ALL RIGHTS TO ITS USE OR REPRODUCTION ARE RESERVED.  
THE ACCURACY OF THIS COLOR RENDERING IS LIMITED BY MEDIA AND OUTPUT DEVICES AND IS INTENDED FOR REPRESENTATIONAL USE ONLY. ACTUAL MANUFACTURING GRAPHIC COLORS ALSO VARY DEPENDING ON PROCESSES & MATERIALS USED. 100% COLOR MATCHES OF SUBMITTED SPECIFICATIONS CAN NOT BE GUARANTEED.  
IF AN ELECTRIC SIGN, THEN INSTALLATION MUST BE ACCOMPLISHED IN TOTAL COMPLIANCE WITH THE NATIONAL ELECTRIC CODE. THE REQUIREMENTS OF UNDERWRITERS LABORATORY, CANADIAN STANDARDS ASSOCIATION, AND APPLICABLE LOCAL CODES. ALL ELECTRICAL SIGNS REQUIRE ROUTINE MAINTENANCE.

CUSTOMER: SHAW'S  
LOCATION: 91 AUBURN ST. NORTHGATE PLAZA PORTLAND, MAINE  
SALES PERSON: B.B. DRAWN BY: L.W.M.

RS. # 3574  
W.O. # 3683

SCALE 1/4" = 1'  
DATE 8/25/04

PROPOSED DRAWING NUMBER  
PYLON SIGN WORK SO B 2007 B R1



SHAW'S PYLONS AT MAIN ENTRANCES ON ALLEN AVENUE & AUBURN ST.

(4) FACE REPLACEMENTS FOR EXISTING: (2) D.F. PYLONS W/ TENANT CABINETS

(2) D.F. 9'-4" X 9'-0" X 1" INTERNALLY ILLUMINATED EXTRUDED ALUMINUM SIGN

CABINET, 2 1/4" RET. & 2" DIMERS: PAINTED BENJAMIN MOORE #1469 GREY  
HIGH OUTPUT FLUORESCENT LIGHTING / -20 DEGREE COLD WEATHER BALLAST  
FACE: WHITE LEXAN

TOP SECTION: B/G: WHITE V.O. 30 1/2" X 91.5

(2) MAJOR TENANT PANELS LEFT SECTION: V.O. = 12" X 50.75" RIGHT SECTION: V.O. = 12" X 50.75"

AGENCY LIQUOR STORE COPY: GERBER TRANS. BLACK VINYL

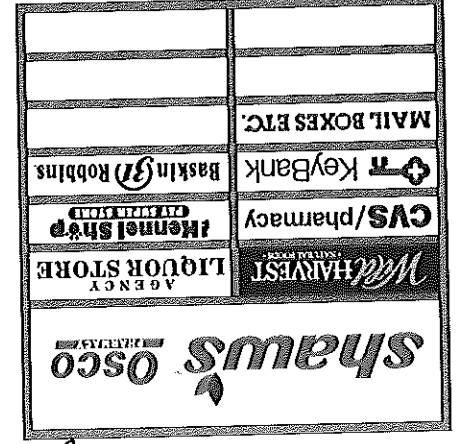
(10) TENANT PANELS - TENANT V.O. 10" X 50.75"

FACES: WHITE LEXAN

EXISTING SHAW'S PYLON ON AUBURN STREET

(2) FACE REPLACEMENTS FOR EXISTING D.F. 8'-4" X 8'-0" INTERNALLY ILLUMINATED PYLON

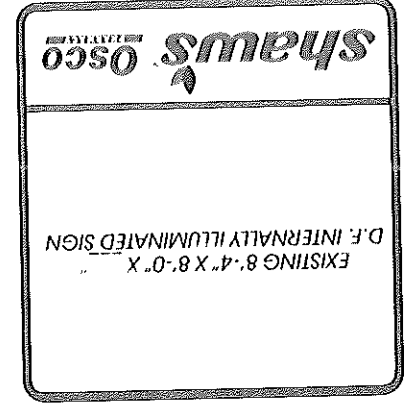
FACE: WHITE LEXAN  
B/G: WHITE  
VINYL GRAPHICS



REPLACEMENT FACES 9.368" - 5" IN SHAW'S

REPLACEMENT FACES COPY AREA 9.5" X 44"

8.59" sq ft



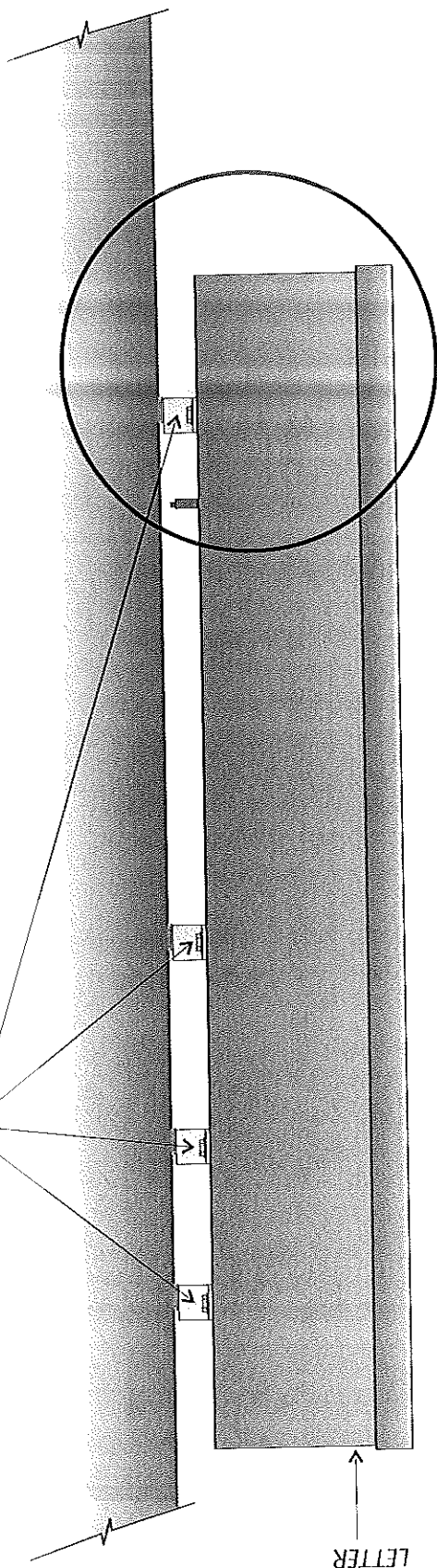
REPLACEMENT FACES 8.32" - 5" IN SHAW'S

? PANEL CUT SIZE 26" X 96"

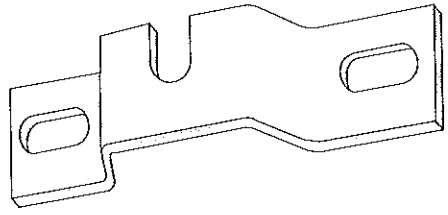
19.38 sq ft



LED CHANNEL LETTER



MOUNTING DETAIL



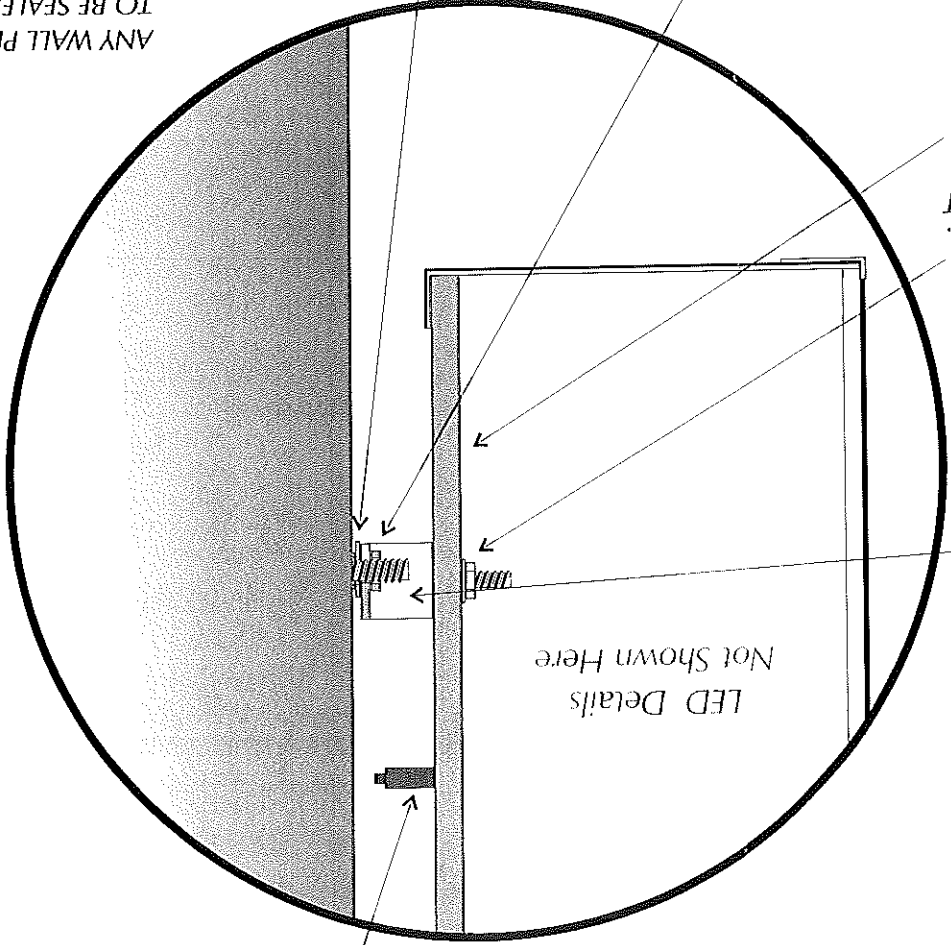
PART #A1321  
TRANSCO ALUMINUM "U" BRACKETS  
3/16" T. X 1 1/2" H. X 6 3/4" L X 1 1/2" PROJECTION

3/8" S.S.  
NUT & BOLT  
LETTER BACK  
ARMORPLY

ALUMINUM FENDER WASHER  
SEALED W/ SILICONE

3/8" S.S. NUT

ANY WALL PENETRATION  
TO BE SEALED W/ SILICONE



CROSS SECTION  
N.T.S.

SEE ELECTRICAL NOTES



DRAWING NO.: LED CHANNEL LETTER  
SHEET 1 / MOUNTING BRACKET

SCALE: N.T.S.  
DATE: \_\_\_\_\_  
RS. #: \_\_\_\_\_  
W.O. #: \_\_\_\_\_

SALESPERSON: L.W.M.  
DRAWN BY: L.W.M.

CUSTOMER: \_\_\_\_\_  
LOCATION: \_\_\_\_\_

CLIENT: \_\_\_\_\_  
ACCEPTANCE SIGNATURE: \_\_\_\_\_  
DATE: \_\_\_\_\_

PLEASE NOTE:  
THIS IS A PROGRESS PRINT - FIELD MEASUREMENTS MAY OR MAY NOT NEED TO BE VERIFIED.  
THIS DESIGN IS THE EXCLUSIVE PROPERTY OF BAILEY SIGN INCORPORATED AND ALL RIGHTS TO ITS USE OR REPRODUCTION ARE RESERVED.  
THE ACCURACY OF THIS COLOR RENDERING IS LIMITED BY MEDIA AND OUTPUT DEVICES AND IS INTENDED FOR REPRESENTATIONAL USE ONLY. ACTUAL MANUFACTURING GRAPHIC COLORS ALSO VARY DEPENDING ON PROCESSES & MATERIALS USED. 100% COLOR MATCHES OF SUBMITTED SPECIFICATIONS CAN NOT BE GUARANTEED.  
IF AN ELECTRICAL SIGN, THEN INSTALLATION MUST BE ACCOMPLISHED IN TOTAL COMPLIANCE WITH ARTICLE 600 OF THE NATIONAL ELECTRICAL CODE. THE REQUIREMENTS OF UNDERWRITERS LABORATORY, CANADIAN STANDARDS ASSOCIATION, AND/OR ANY APPLICABLE LOCAL CODES. THIS INCLUDES PROPER GROUNDING AND BONDING OF THE SIGN.  
ALL ELECTRICAL SIGNS REQUIRE ROUTINE MAINTENANCE.

**Bailey sign**  
www.baileysign.com  
9 Thomas Drive  
Col. Westbrook Executive Park  
Westbrook, ME 04092  
207-774-2843 / 1-800-539-SIGN  
Fax: 774-1193  
E-Mail: newsign@baileysign.com  
©COPYRIGHT 2004

REVISIONS:

VOLTAGE: \_\_\_\_\_

APPROVED MANUFACTURING: \_\_\_\_\_  
DATE: \_\_\_\_\_

NOTES: