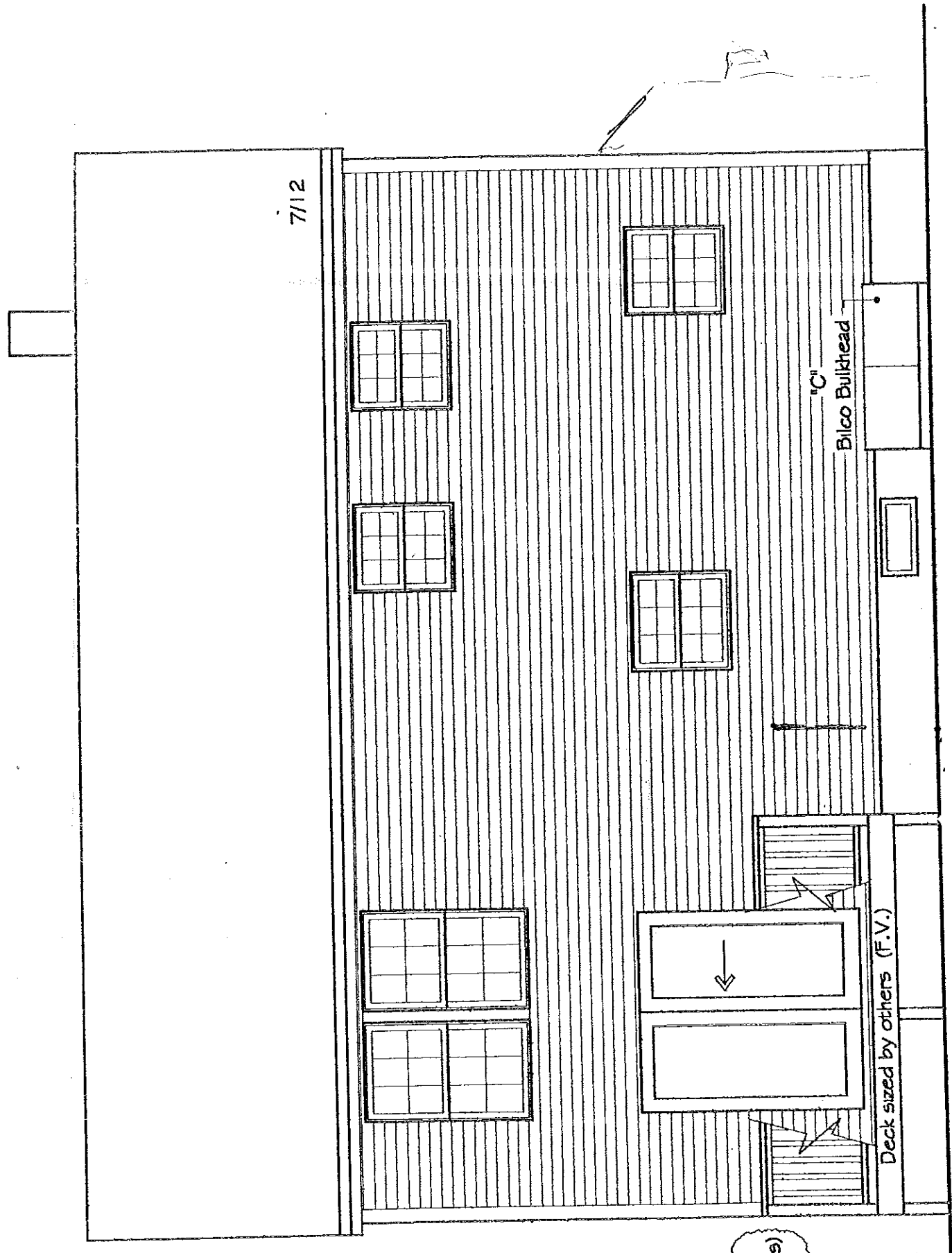
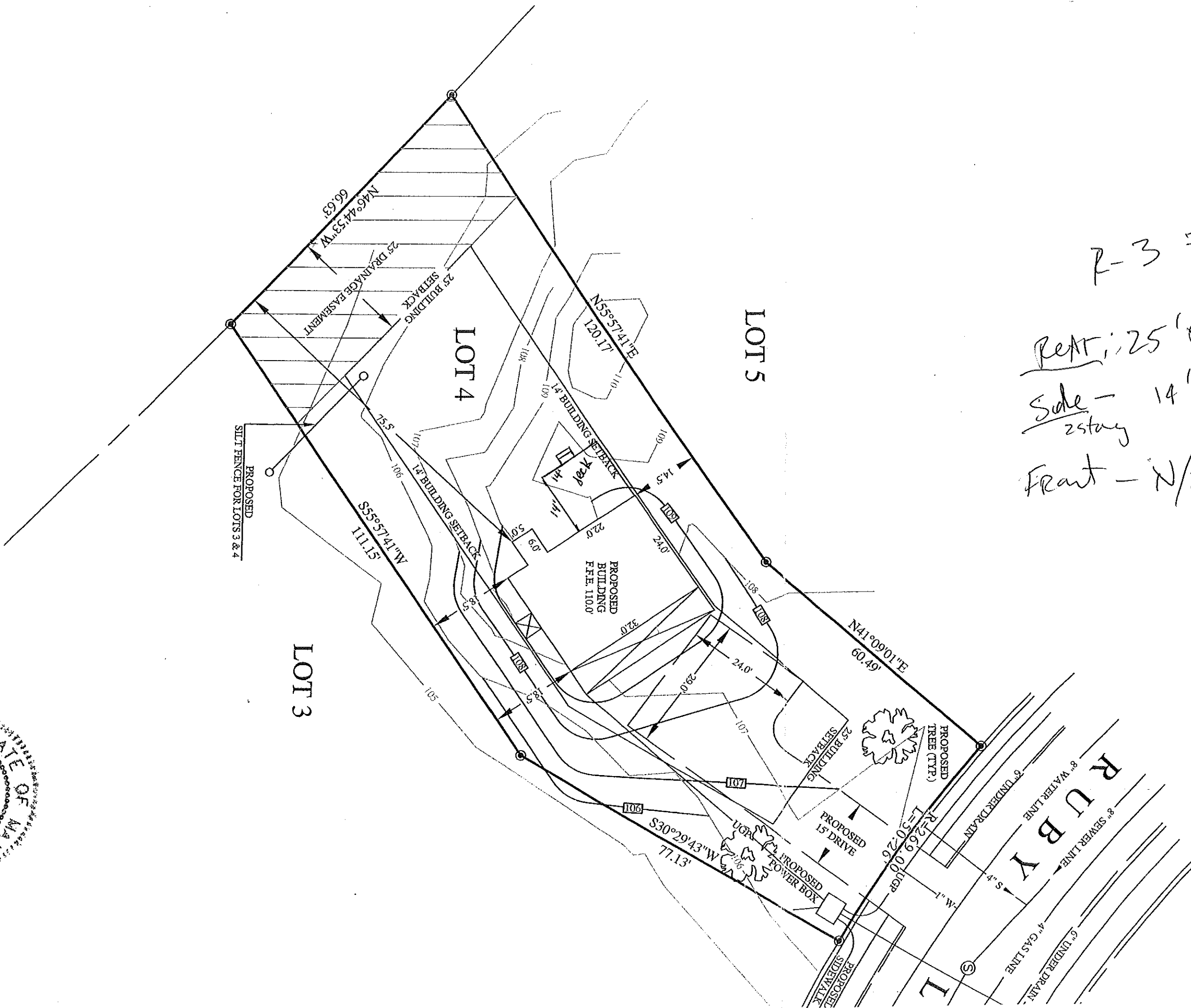


Field verify access to ground level Meet stair codes

FRONT ELEVATION
Scale: N.T.S.



REAR ELEVATION
Scale: N.T.S.



R-3 zone
 Rear: 25' stay - 25' + shown
 Side - 14' min - 14.5' shown
 2 stay
 Front - N/A

[Handwritten signature]

STATE OF MA
[Seal/Stamp]