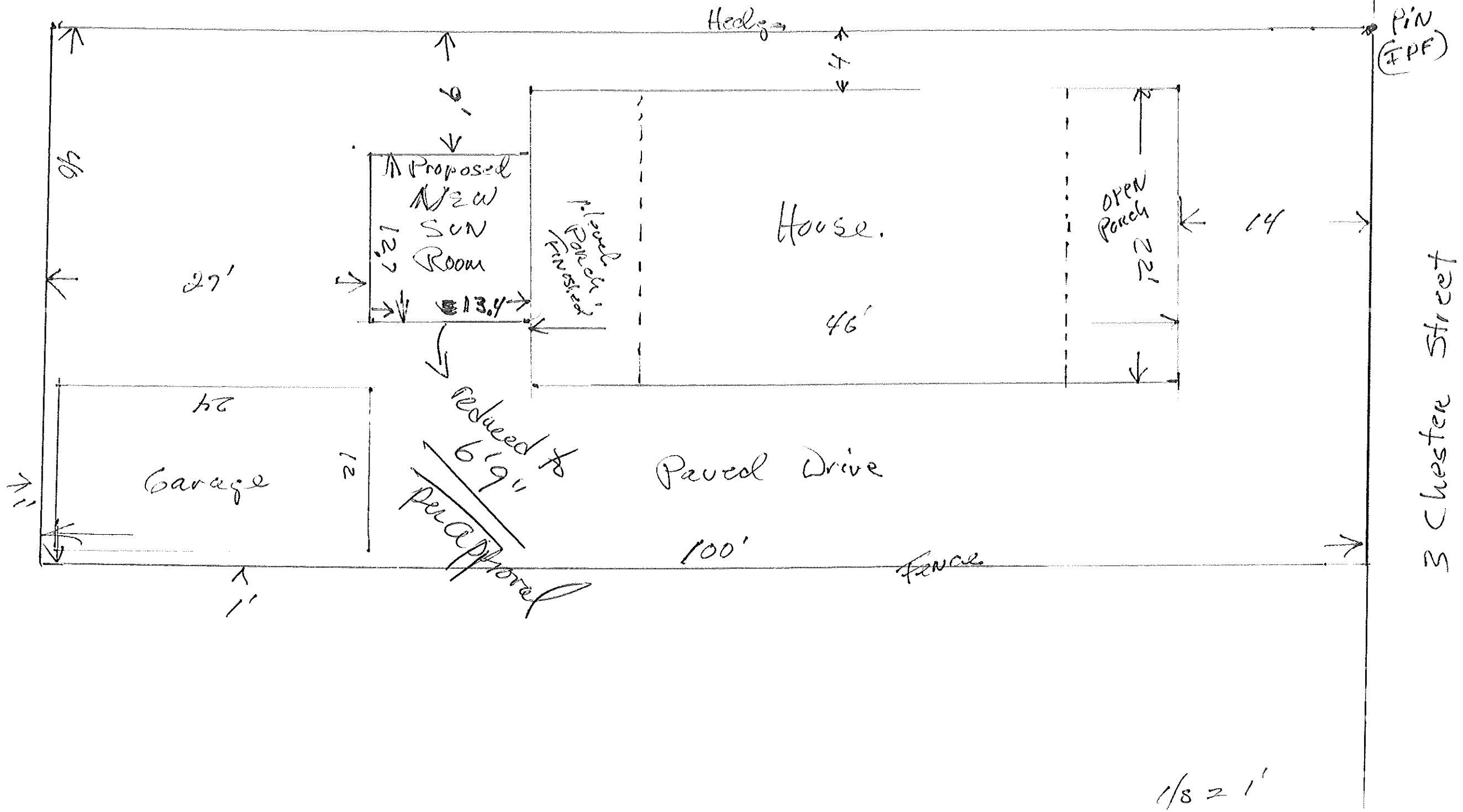


6/20/06 Footing insp w/ Tom C.

Width of sunroom reduced see 06-0468 JMB

6/30/06 - floor framing for sunroom -  
OK to cover. m

7/29/06 - garage + steps in rear removed  
as required by permit, JMB



1/8 = 1'

1/4" = 1'

Sew Room ✓

Triple 2x10 PT.  
2x10 on Hangers

House.

Existing Footing.  
(Bulkhead)  
- 6" Post over -

12" Sona Tubes  
to 48" Depth.  
to Hold 6" Post.

3 Chester St.

12' 5"

13' 5"

