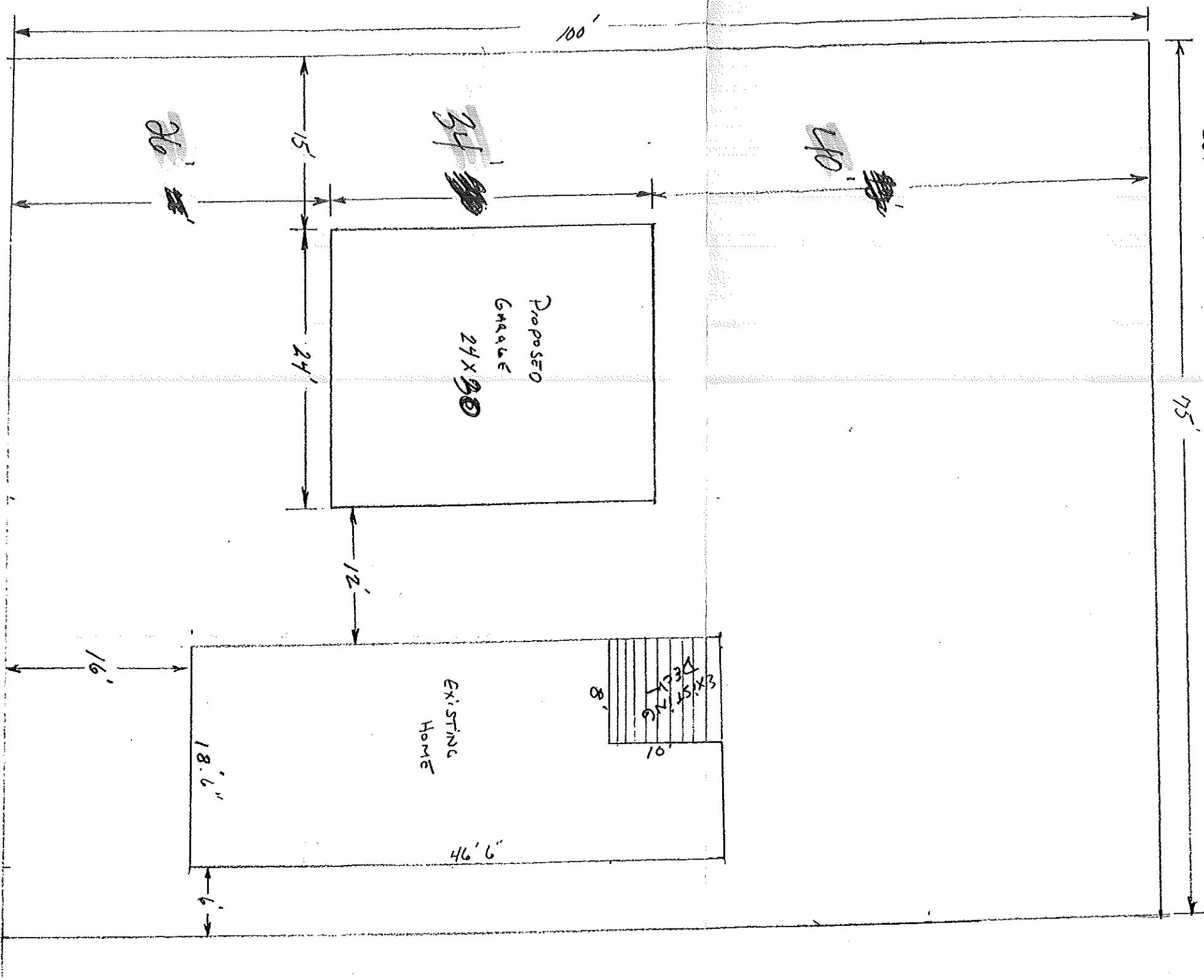


Zone R-5  
 MAP 428  
 Block B  
 Lot 9

Attention: Tracy Husson  
 2:00 pm 6-16-03  
 7500 square feet



# 140  
 SHERWOOD ST

SET BACKS  
 Side yard 8'  
 Front 20'  
 Back 20'

MIN. Requirements Per UNIT  
 MIN LOT SIZE = 3000 PER UNIT

R-5 8'  
 Sides 8'  
 Front 20'  
 Back 20'  
 Lot OK

GROSS FLOOR AREA: 720 SQ. FT.  
 GRADE TO RIDGE HEIGHT: 13' - 2"

**Building Materials List for Plan #720-1**

~ Local building code approved substitutions may be made to this list ~  
 Variations in construction methods and materials can require modification of this list. Every attempt is made for greatest accuracy, but typographical or human error is possible. Quantities verification by the materials supplier is recommended before materials packages is finalized and/or shipped.

**Concrete & Reinforcement For Monolithic Slab/Footing**  
 Poured-in-place concrete (min) 14 cy  
 #4 Reinforcing Steel Bar ASTM A-615 grade 40 20' lengths 19 pcs.  
 382 sf 127 ll, 4' roll

**Concrete & Reinforcement For Stemwall/Footing Foundation**  
 Poured-in-place concrete 32 pcs.  
 #4 Reinforcing Steel Bar ASTM A-615 grade 40 160 ll, 4' roll 641 sf

**Rough Framing**  
 2 x 4 HF/DF No. 2 for plates and lookouts 264 LF  
 2 x 4 HF/DF No. 2 pressure-treated mudsill 108 LF  
 2 x 4 HF/DF No. 2 pressure-treated mudsill 18' length 1 pcs.  
 4 x 10 DF No. 1 header 30 pcs.  
 2 x 6 DF No. 1 Header 16 pcs.  
 2 x 4 x 22'-1/2" with screened vent holes 30 pcs.  
 Trusses: 4 : 12 pitch 24'-0" span, incl. (2) end trusses 16 pcs.

**Sheathing Materials**  
 15/32" 5-ply C-D APA Plywood ext. glue P.1 24/0 Roof 4 x 8 sheet 28 sheets  
 (for optional sliding boards) 7/16" o.s.b. wall sheathing 4 x 8 sheet 31 sheets

**Vapor Barrier**  
 Roof 15# bituminous felt paper in 36" wide roll 400 ll  
 Wall 7# bituminous felt paper in 40" wide roll 720 sf  
 Floor .006" black polyethylene membrane 31 sheets

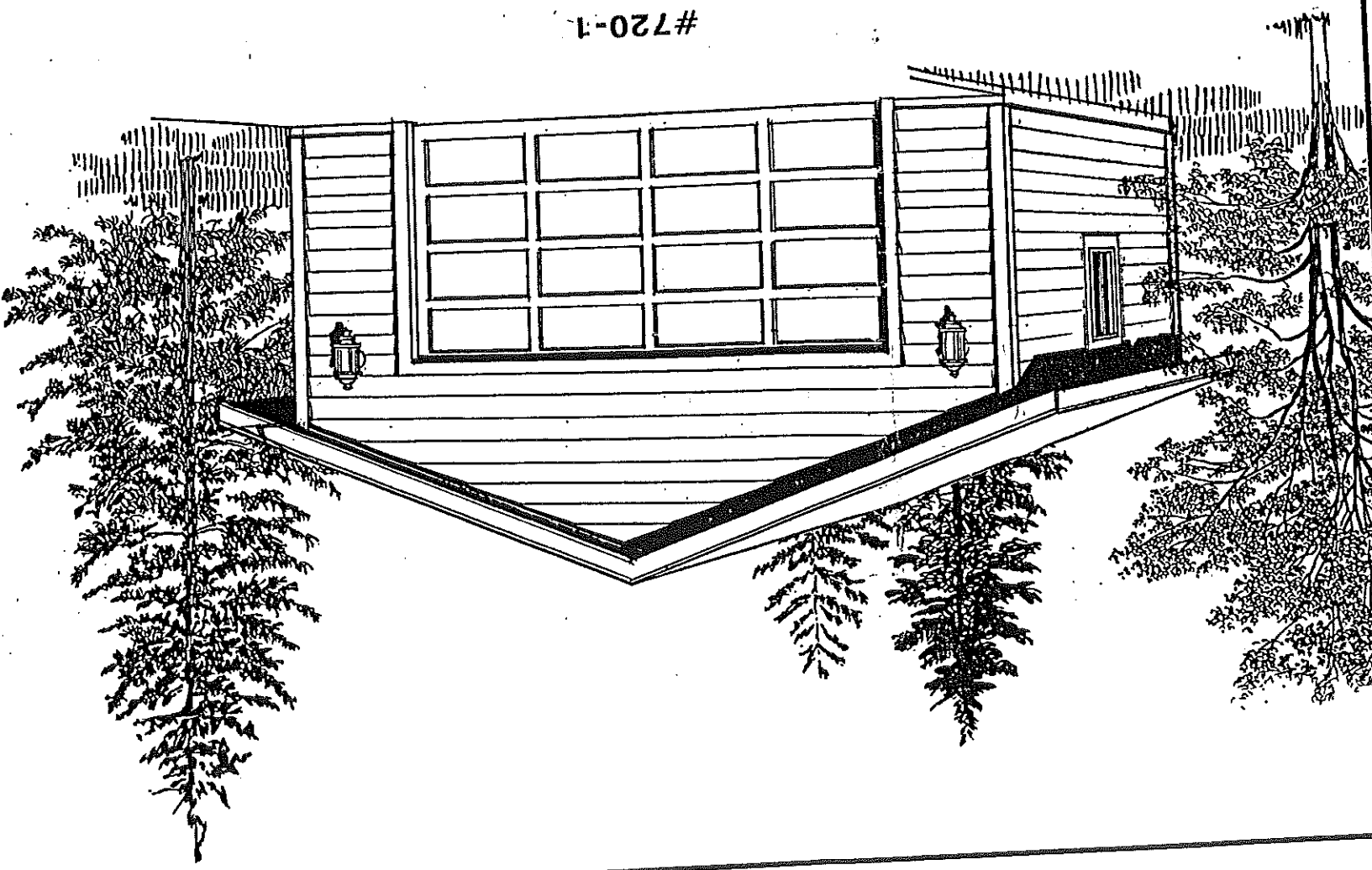
**Sliding Materials**  
 7/16" o.s.b. textured (or 5/8" T-1-11 plywood) panel sliding 4 x 8 sheet 31 sheets  
 (optional) 8" textured o.s.b. sliding boards with 1" lap 13 pcs.  
 Cedar Trim: 1 x 4 10' length 2 pcs.  
 Cedar Trim: 1 x 4 8' length 4 pcs.  
 Cedar Trim: 1 x 3 8' length 8 pcs.  
 Cedar Fascia: 1 x 6 16' length 4 pcs.  
 Cedar Rakeboard: 2 x 6 699 sf

**Roofing Materials**  
 Composition Roofing Shingles 32 ll  
 Rigid gvent material 2 ea.  
 4030 sliding window assemblies 1 ea.  
 3068 exterior door assembly 1 ea.

**Windows and Doors**  
 16" - 0" x 7'-0" sectional garage door assembly  
 Anchor bolts: 1/2" dia. x 10" ASTM A-307/A-325, type X w/ hex nuts 29 pcs.  
 Flat washer: 2" x 2" square x 3/16" thick 28 pcs.  
 Simpson H1 clips (or equal) 4 pcs.  
 Simpson STD10 hold-down straps (or equal) 50 lbs.  
 16d sinker nails @ 50 lbs. / box 20 lbs.  
 8d common nails @ 145 nails / lb. 10 lbs.  
 Roofing nails @ 210 nails / lb. 48 ll  
 Z-flashing strip for panel siding (applied) 27  
 Dnp flashing for window/door heads (applied)

**Metal Parts**  
 80 mph Wind (UBC) 80 mph Wind (IBC & IRC)  
 ≤100 mph Wind (IBC & IRC)  
 Wind Exposure 'B'  
 Seismic Zone 3 (UBC)  
 Seismic Zones A, B & C (IBC & IRC)  
 25#/sq. ft. Snow Load  
 OCCUPANCY CLASSIFICATION: 'U' & 'U1'

This design and planset is the property of Behm Design © 2001. Reproduction of any kind is prohibited by copyright law without expressed written permission by Behm Design. Plans are sold for available through Behm Design.  
 (1) one construction use only. Repetitive use agreements are available through Behm Design.



#720-1

Marianna Russo  
 140 Skewood St.  
 Portland, ME 04103  
 207-772-5654  
 207-650-6185

QUESTIONS?  
 CALL US  
 1-800-210-6776

Behm Design  
 www.behmdesign.com

720-1

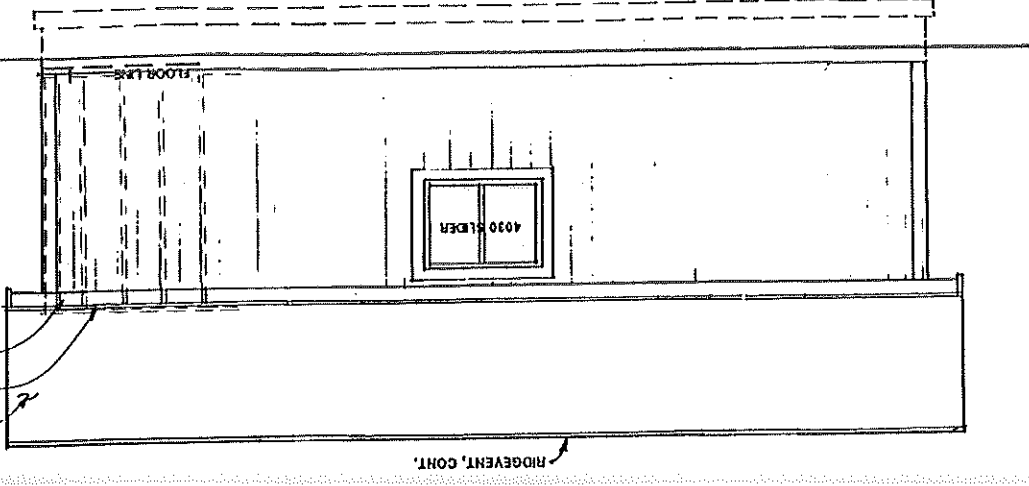
PLAN NO.

DESIGN DRAWN DATE  
 01

SHEET CONTENTS  
 MATERIALS LIST  
 PROJECT ILLUSTRATION  
 PROJECT DATA

SHEET 1 OF 6

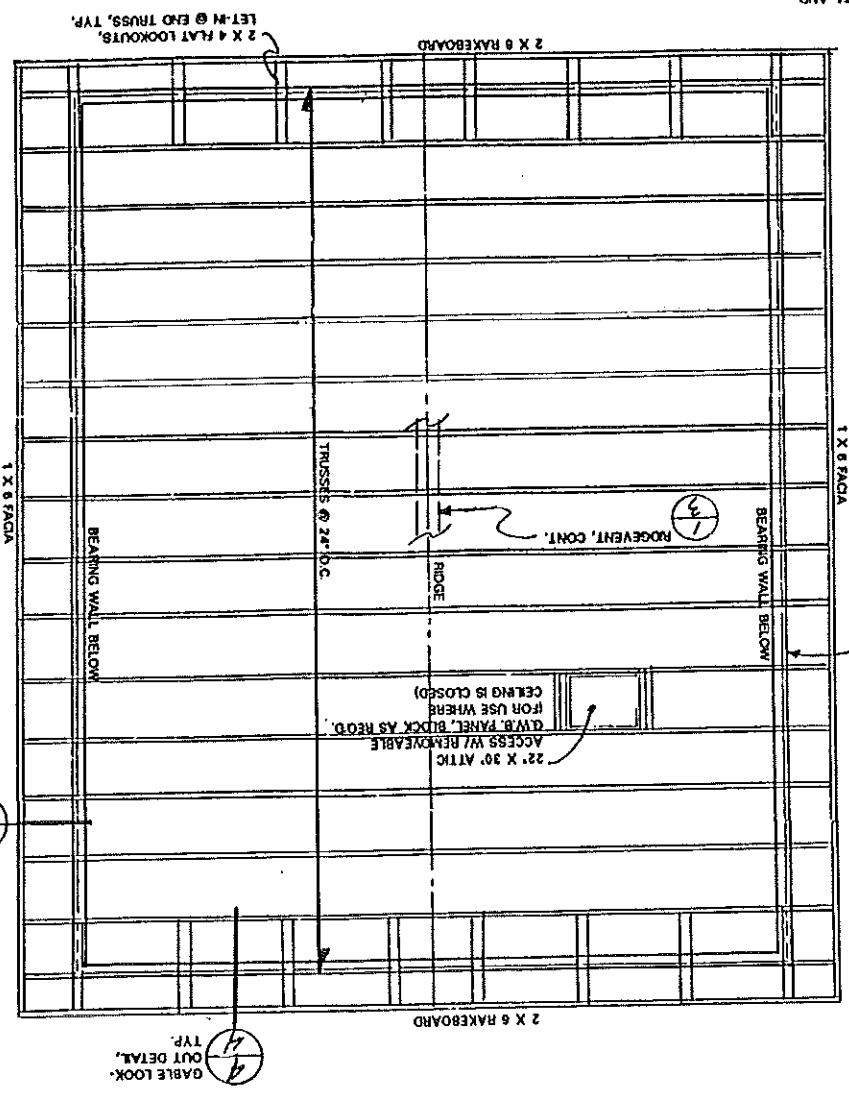
**LEFT SIDE ELEVATION**  
SCALE: 1/4" = 1'-0"



NOTE:  
ARROW LINE INDICATIONS FOR ROOF SLOPES, SEE EXTENSION ELEVATIONS  
ILLUSTRATE EXTENT OF SPANNING MEMBERS, NOT DIRECTION OF SPAN

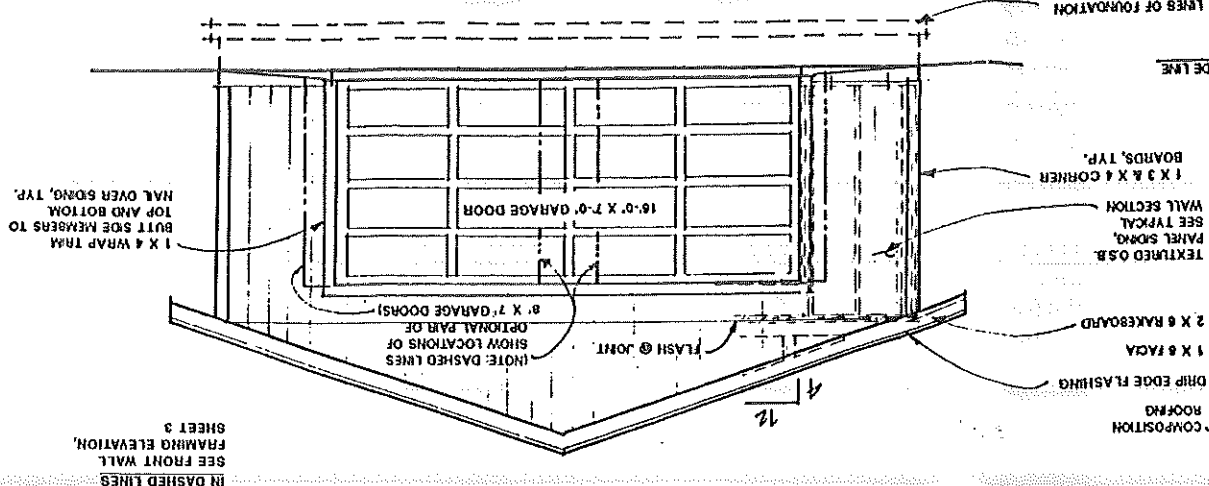
NOTE:  
ENGINEERING DATA AND SPECIFICATIONS SHALL BE PROVIDED BY TRUSS MANUFACTURER AS REQUIRED BY BUILDING OFFICIAL AND SHALL BE STATE APPROVED.

**ROOF FRAMING PLAN**  
SCALE: 1/4" = 1'-0"



VENTED 2X BLOCKING BETWEEN TRUSSES @ TOP OF DOUBLE PLATE, TYP. SEE TYPICAL WALL SECTION

**FRONT ELEVATION**  
SCALE: 1/4" = 1'-0"

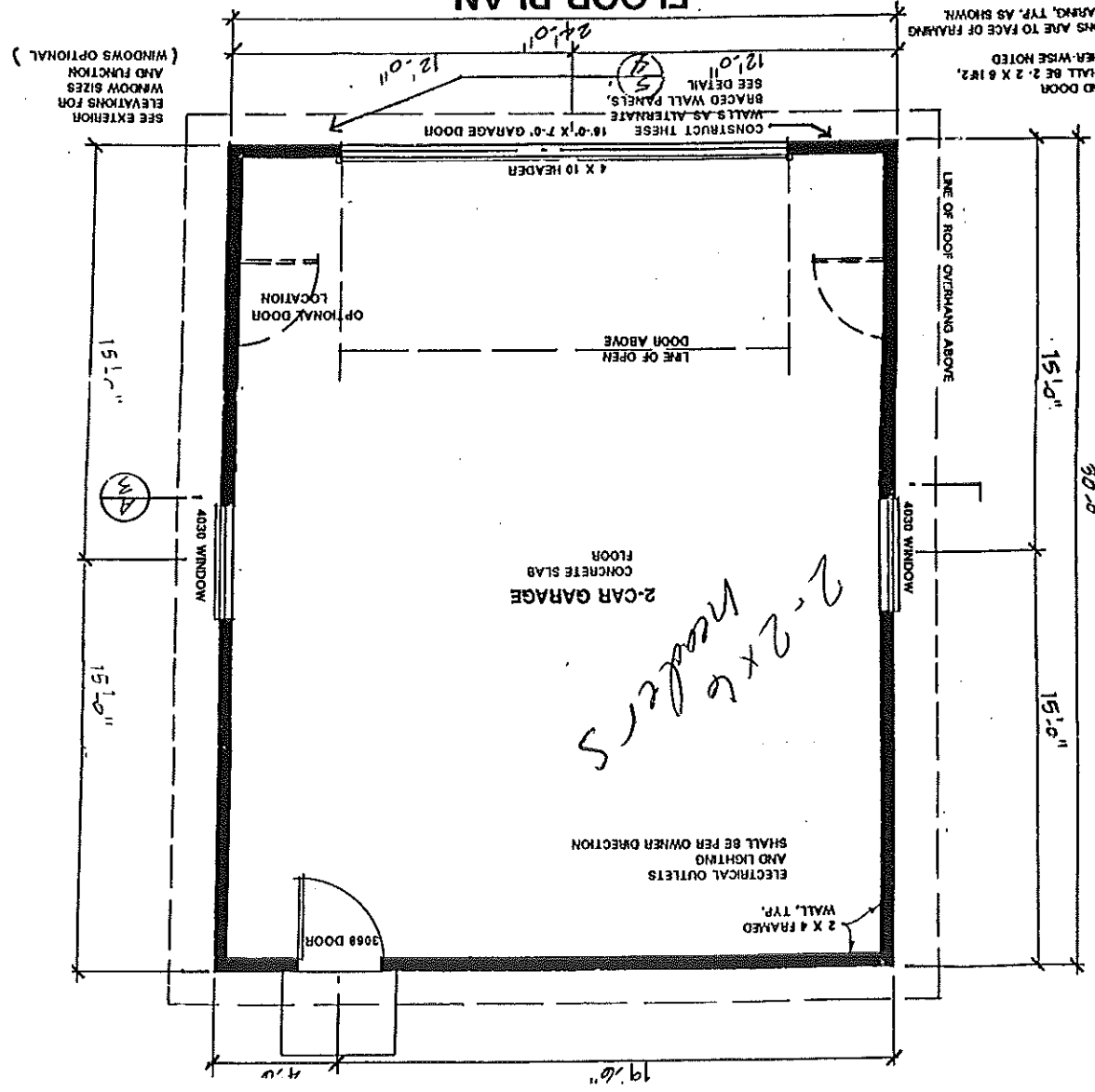


PARTIAL WALL FRAMING SHOWN IN DASHED LINES  
SEE FRONT WALL FRAMING ELEVATION, SHEET 3

BRACED WALLS AS PER UBC 2320.11.3 & 11.4 & IBC 2308.9.3 & 9.3.1 & IRC R602.10.3 - 10.8 & CABO 602.9 AS APPLICABLE  
NAIL SDRG PANELS OR SHEATHING W/ 6d @ 6" O.C. EDGES AND @ 12" O.C. FIELD. AND USE ALTERNATE BRACED WALL PANELS (ABWP) WHERE SHOWN

NOTE:  
BUILDING DEPTH MAY BE ADJUSTED TO ALTERNATE DIMENSION AS NOTED. MATERIALS LIST QUANTITIES ARE BASED ON THE ORIGINAL DEPTH DIMENSION SHOWN. ALTERNATE DEPTH WILL REQUIRE QUANTITIES REVISION.

**FLOOR PLAN**  
SCALE: 1/4" = 1'-0"



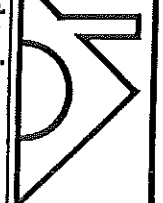
SHEET CONTENTS  
FLOOR PLAN  
ROOF FRAMING PLAN  
FRONT ELEVATION

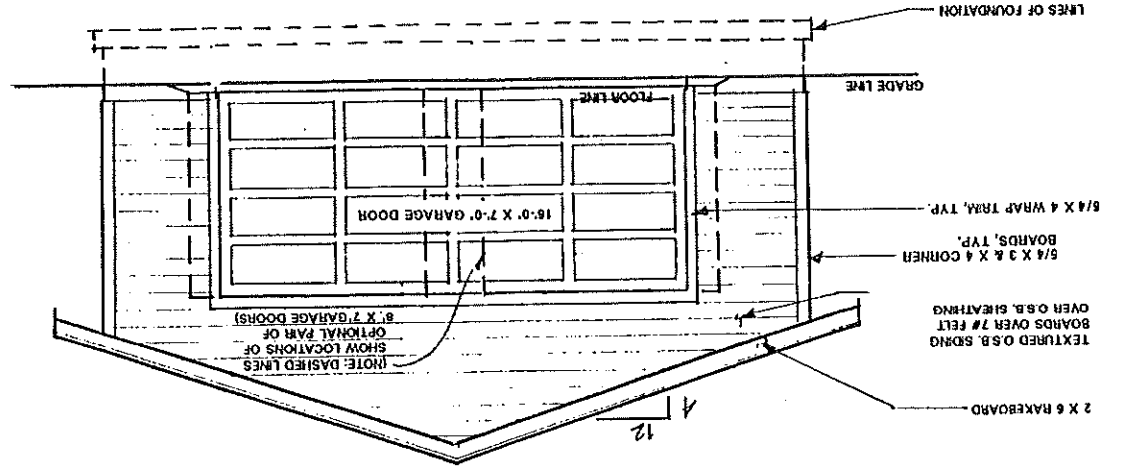
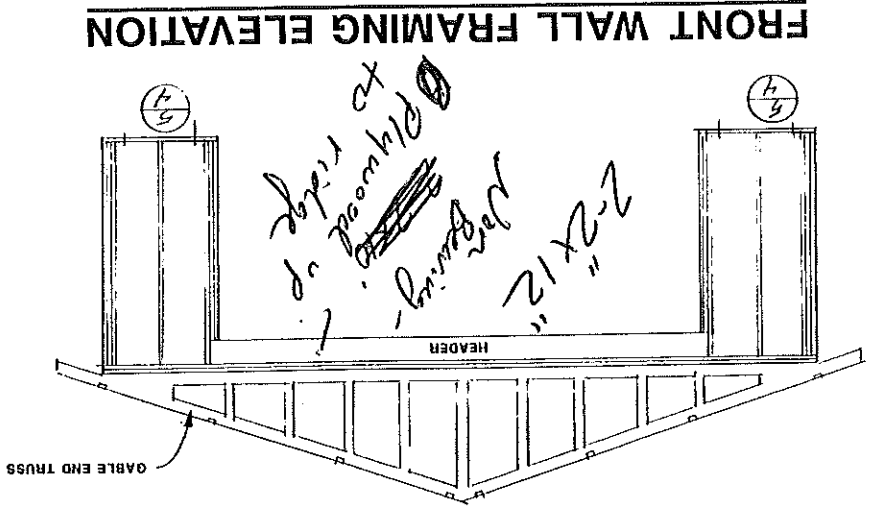
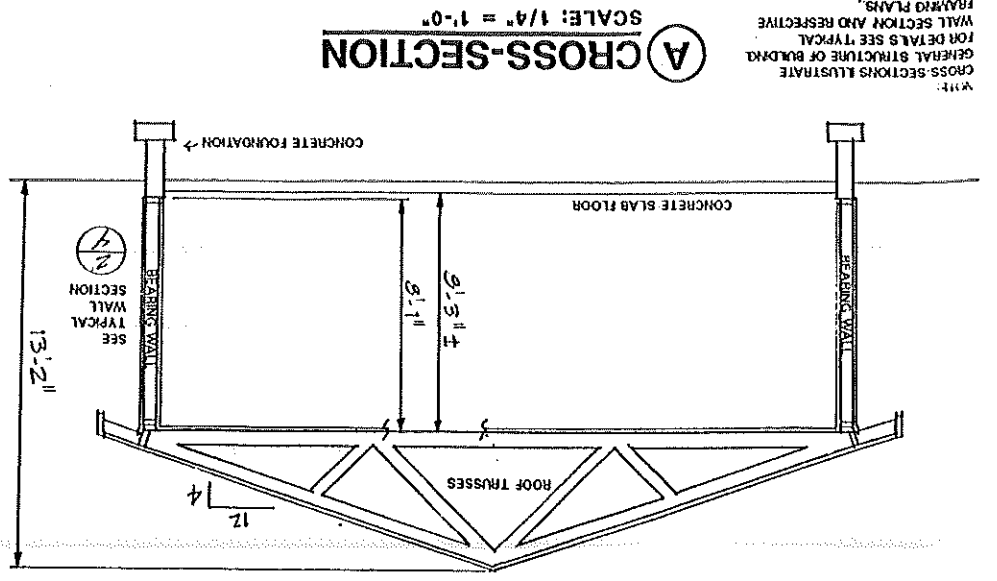
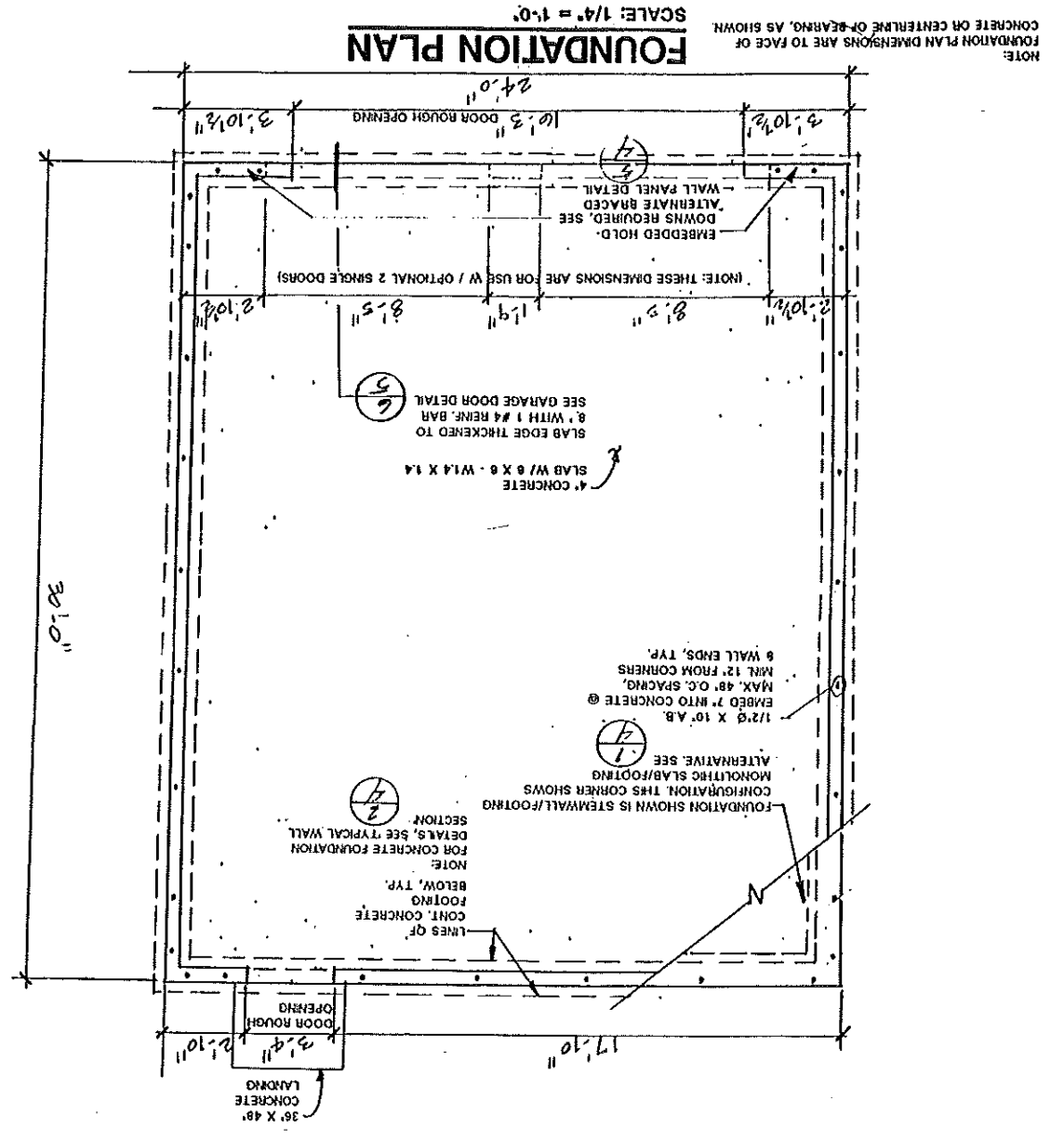
SHEET 2 OF 6

DESIGN DRAWN DATE

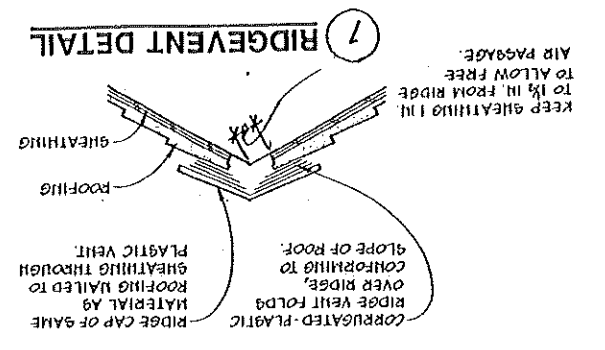
PLAN NO. 720-1

Behm Design  
www.behmdesign.com

3	OF 6
SHEET	SHEET CONTENTS
FRONT WALL FRAMING ELEV., RIDGEVENT DETAIL	CROSS-SECTION FOUNDATION PLAN EXTERIOR ELEVATIONS
DATE 0 /	DESIGN DRAWN
PLAN NO. 720-1	
 Behm Design www.behmdesign.com	

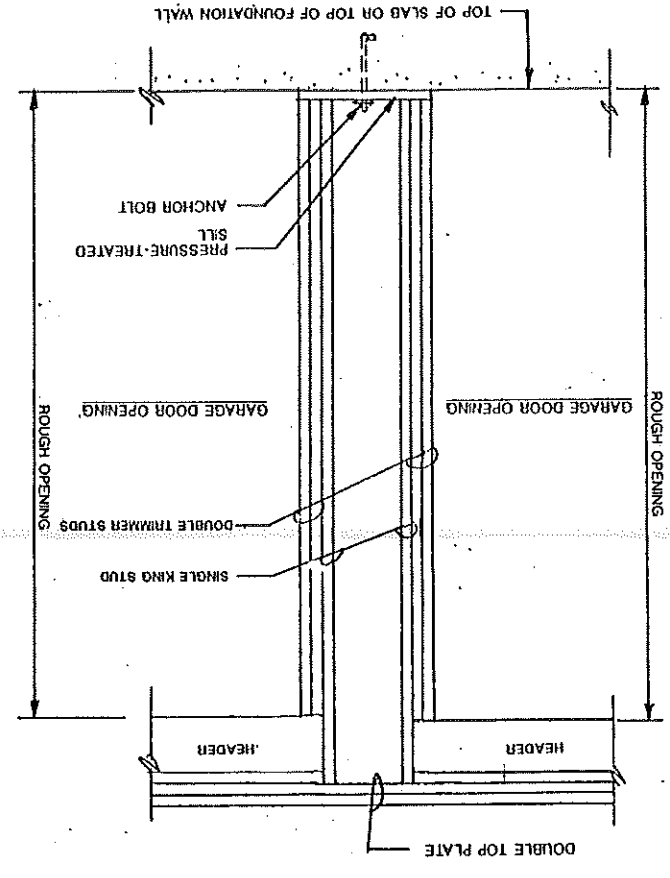


NOTE: NOTES AND MATERIAL INDICATIONS SHOWN ARE TYPICAL FOR ENTIRE BUILDING EXTERIOR, AS APPLICABLE.

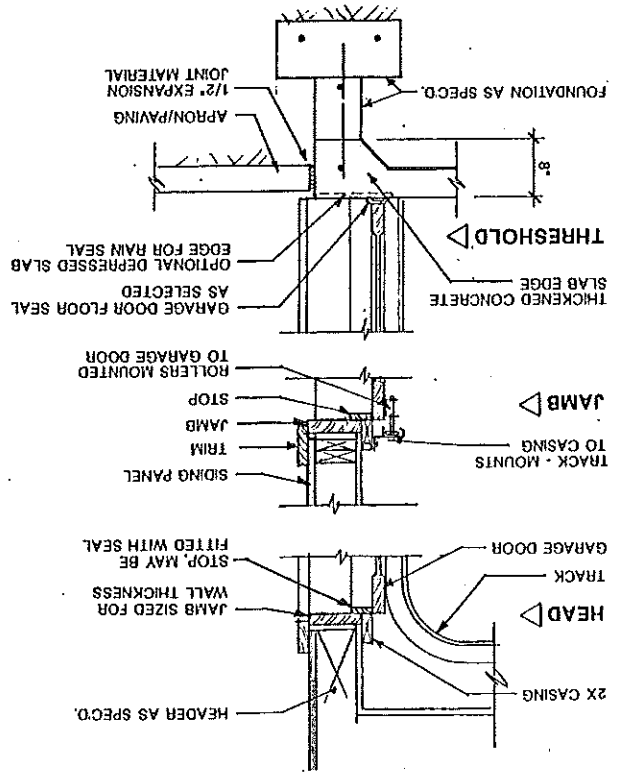




**2 GARAGE DOOR SEPARATOR FRAMING DETAIL**

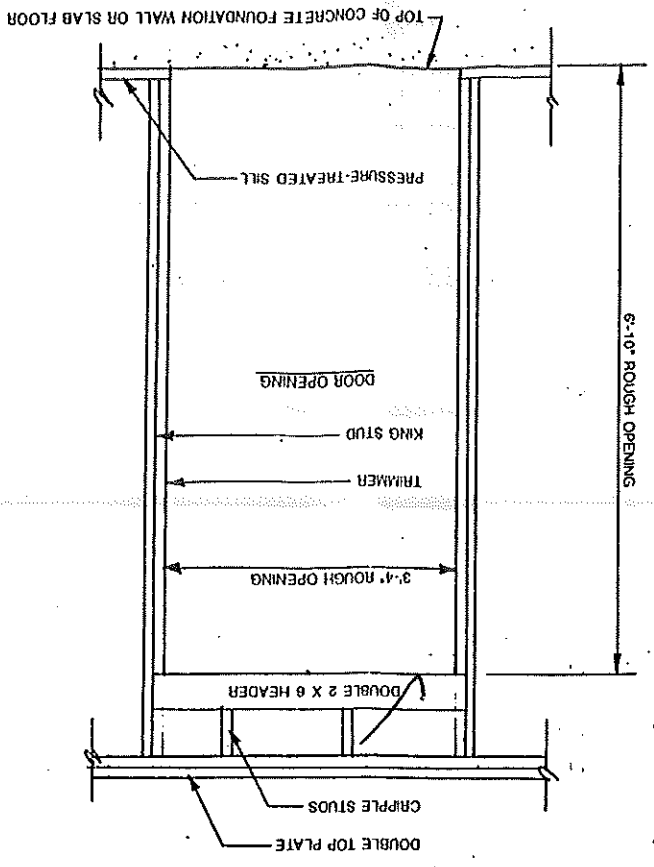


**4 GARAGE DOOR DETAIL**

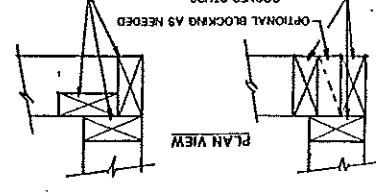


NOTE: DOOR AND WINDOW COMPONENTS SHOWN ARE GENERIC AND ACTUAL PRODUCTS MAY VARY SLIGHTLY IN CONFIGURATION

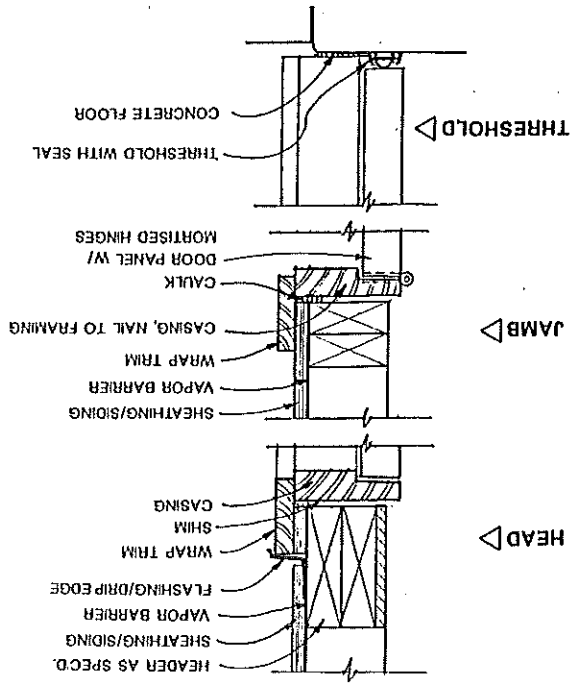
**3 DOOR FRAMING DETAIL**



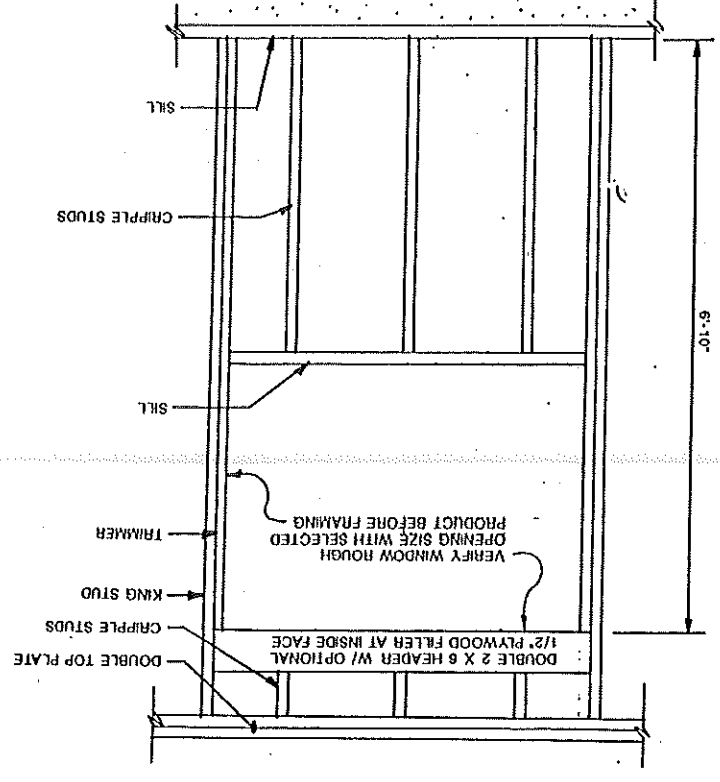
**CORNER FRAMING OPTIONS**



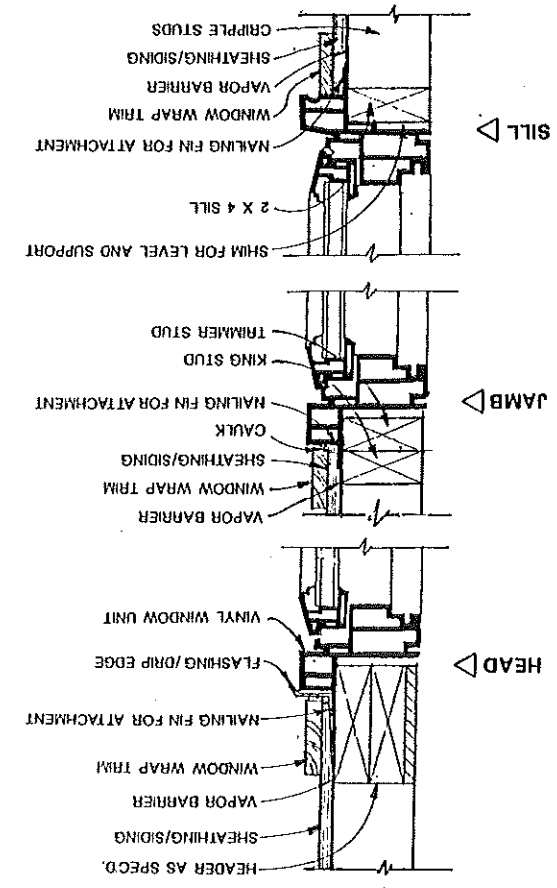
**3 DOOR DETAIL**



**1 WINDOW FRAMING DETAIL**



**2 VINYL WINDOW DETAIL**



6 OF 6

**51**

SHEET

SHEET CONTENTS

GARAGE DOOR DETAILS  
DOOR DETAILS  
WINDOW DETAILS  
WALL OPENING FRAMING  
DETAILS

DESIGN *VP*  
DRAWN *VP*  
DATE *4/1*

PLAN NO.

720-1

**Behm Design**  
www.behmdesign.com

