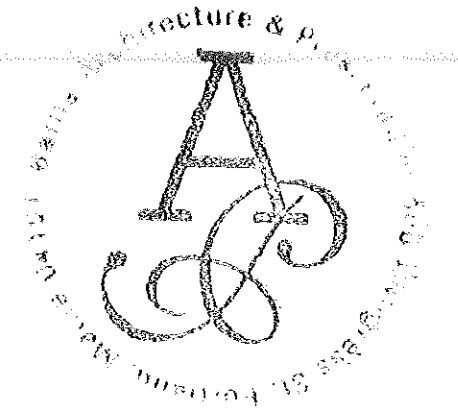
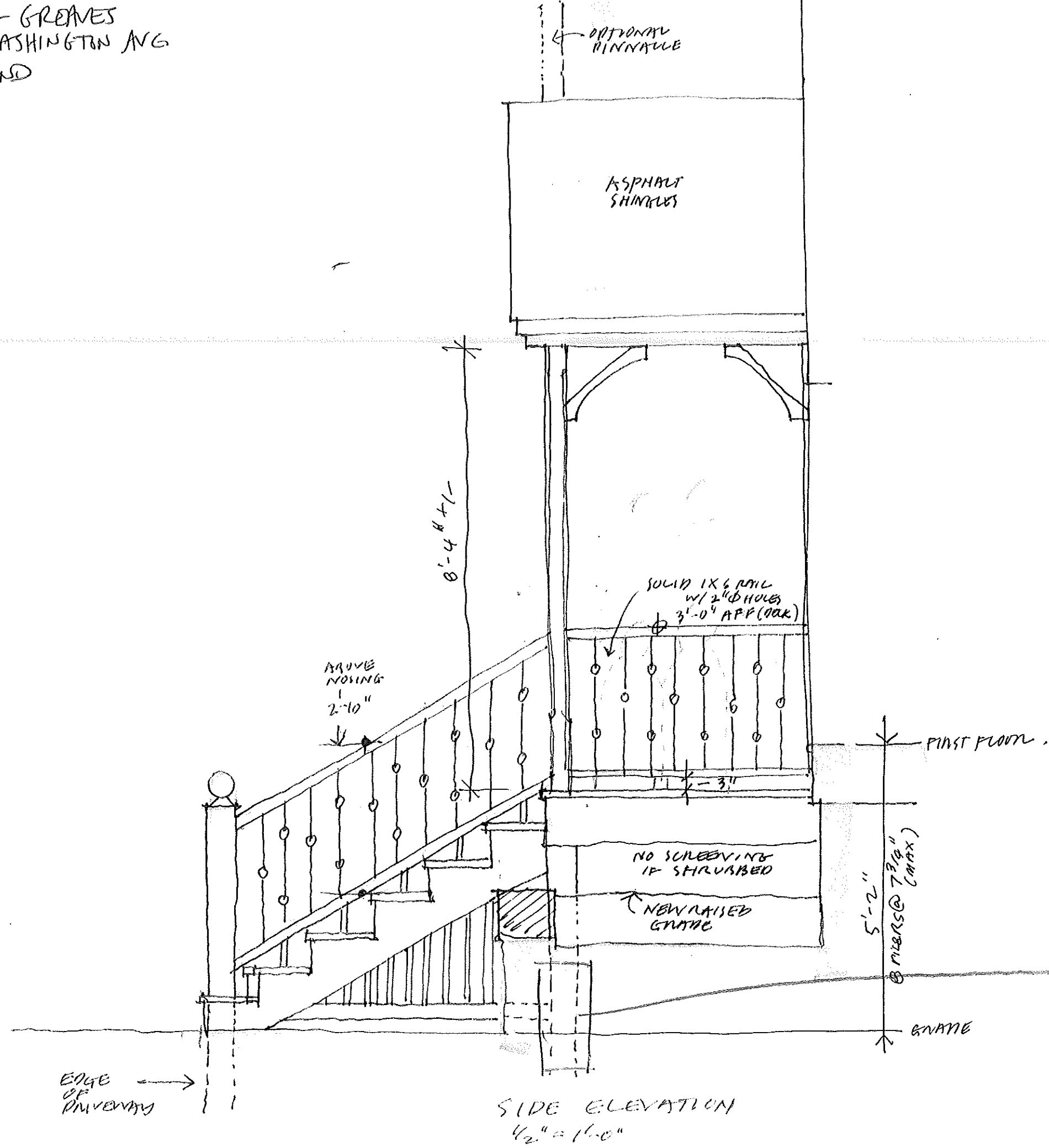


THOMPSON-GREAVES  
 1708 WASHINGTON AVE  
 PORTLAND



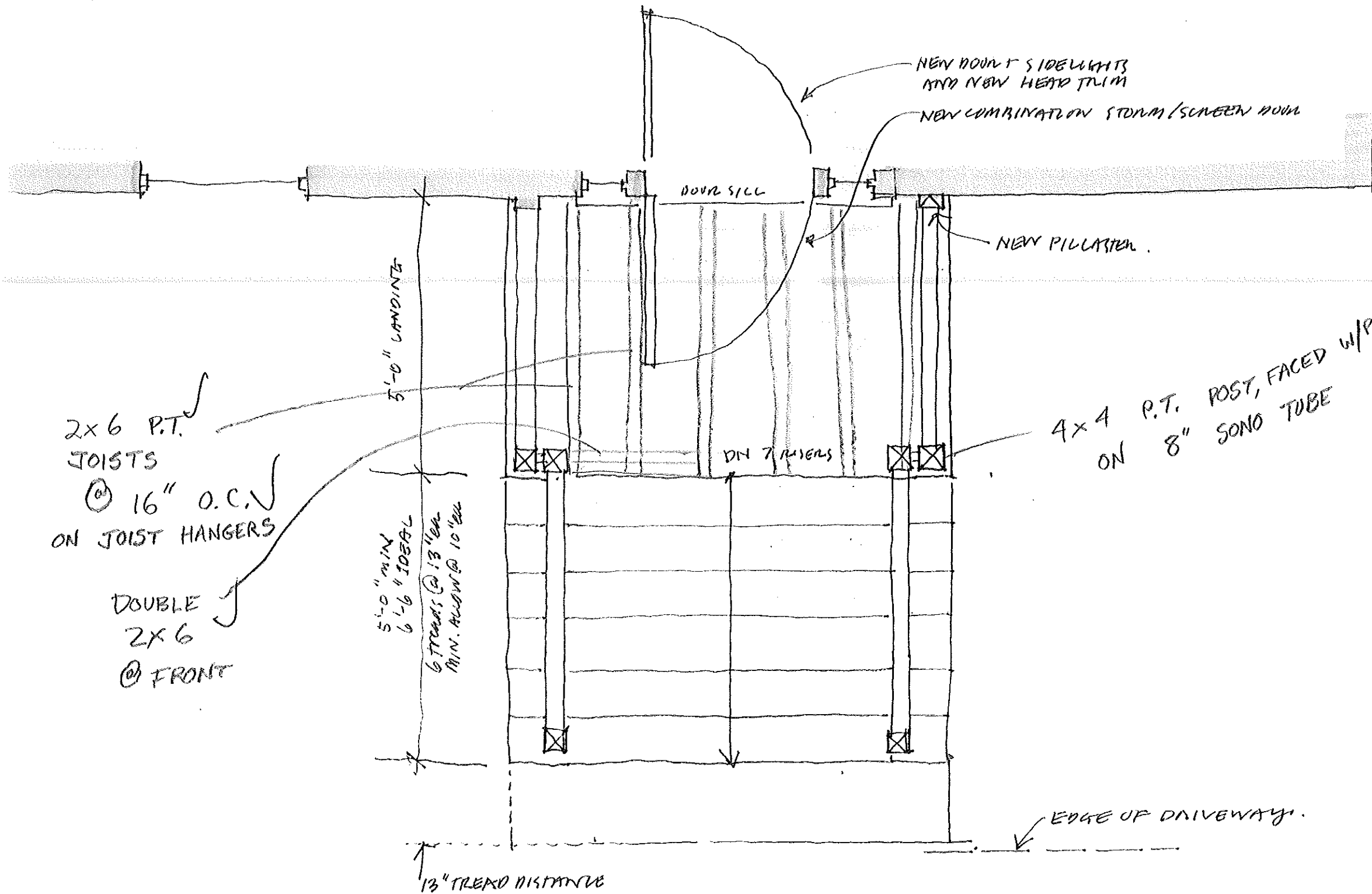
THOMPSON-GREAVES HOUSE  
 1708 WASH. AVE. EXT.  
 PORTLAND

5 JULY 2000

POSTS SET ON 8"  
 CONCRETE SOND TUBES  
 4' BELOW GRADE

SIDE ELEVATION  
 1/2" = 1'-0"

THOMPSON - GREAVES  
1708 WASHINGTON AVE  
PORTLAND



2x6 P.T. JOISTS @ 16" O.C. ON JOIST HANGERS  
DOUBLE 2x6 @ FRONT

5'-0" MIN 1x6 JOISTS  
6 TREADS @ 13" ON CENTER  
MIN. ALLOW @ 10" ON CENTER

4x4 P.T. POST, FACED W/PINE ON 8" SONO TUBE

NEW DOUBLE SIDELIGHTS AND NEW HEAD TRIM  
NEW COMBINATION STORM/SCREEN DOOR

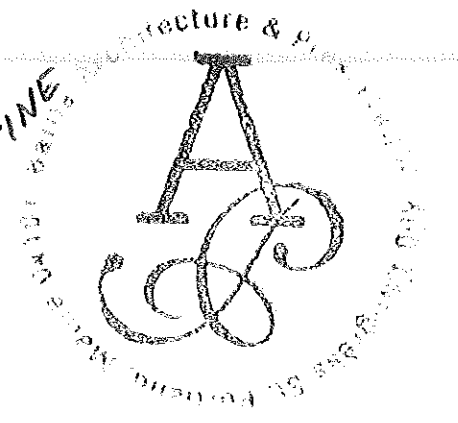
NEW PILLAR

DOOR SILL

DN 7 RISERS

EDGE OF DRIVEWAY

13" TREAD DISTANCE



THOMPSON - GREAVES HOUSE  
1708 WASH. AVE. EXT.  
PORTLAND

5 JULY 2000

PLAN  
1/2" = 1'-0"

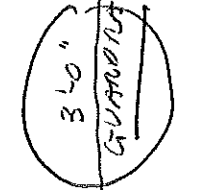
THOMPSON-GLEAVES  
 1708 WASHINGTON AVE.  
 PORTLAND, ME 04103  
 878-8184

OPTIONAL  
 CUSTOM  
 FINIAL / PINNACLE

3'-0" x 6'-8"  
 DOOR  
 W/ SIDELIGHTS  
 REPLACES  
 EXISTING DOOR  
 IN EXISTING OPENING

6" x 6" WP POST  
 W/ CHAMFERED  
 EDGES

OR  
 36" AFF → 3'-6" AFF  
 IF GREATER  
 THEN  
 2'-6" R.F. GRADE



Safety  
 Glass  
 Sec. 2414.0

3'-0"  
 6'-8"  
 DOOR

HOUSE SILL

LANDING

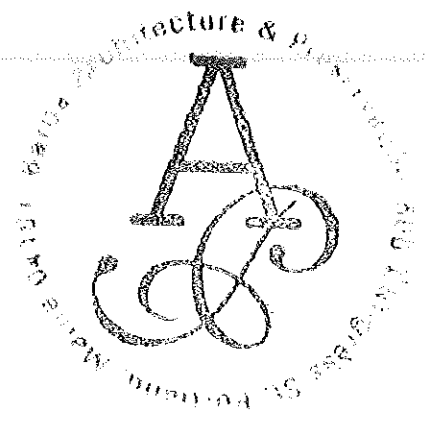
STAIN COAT  
 Sec. 1014.0

Handrails 1022.0

Handrails sec. 1021.0

ON  
 BOTH  
 SIDES!  
 RAISE  
 BED  
 TO RAISE  
 GRADE ✓  
 TO ALLOW  
 LOWER  
 HANDRAIL

BRICK  
 TO MATCH



THOMPSON-GLEAVES HOUSE  
 1708 WASH. AVE. EXT.  
 PORTLAND

5 JULY 2000

Red = SAM.

FRONT ELEVATION  
 1/2" = 1'-0"