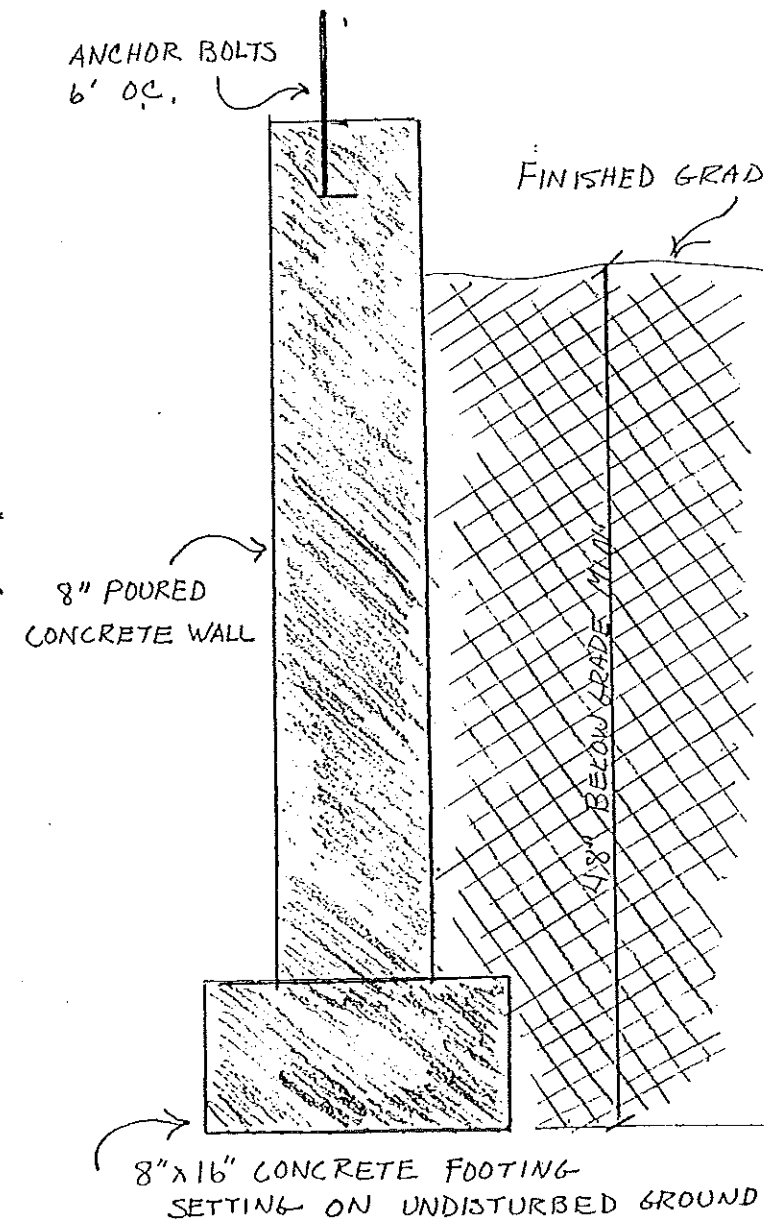


FOUNDATION PLAN MEADOWRIDGE

NOT TO SCALE

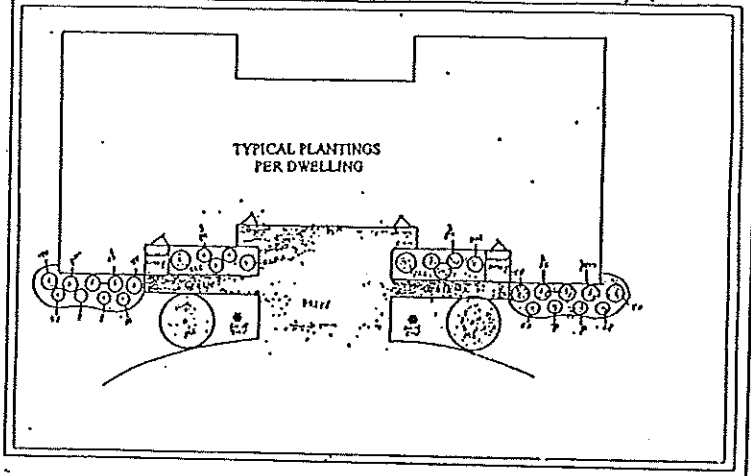
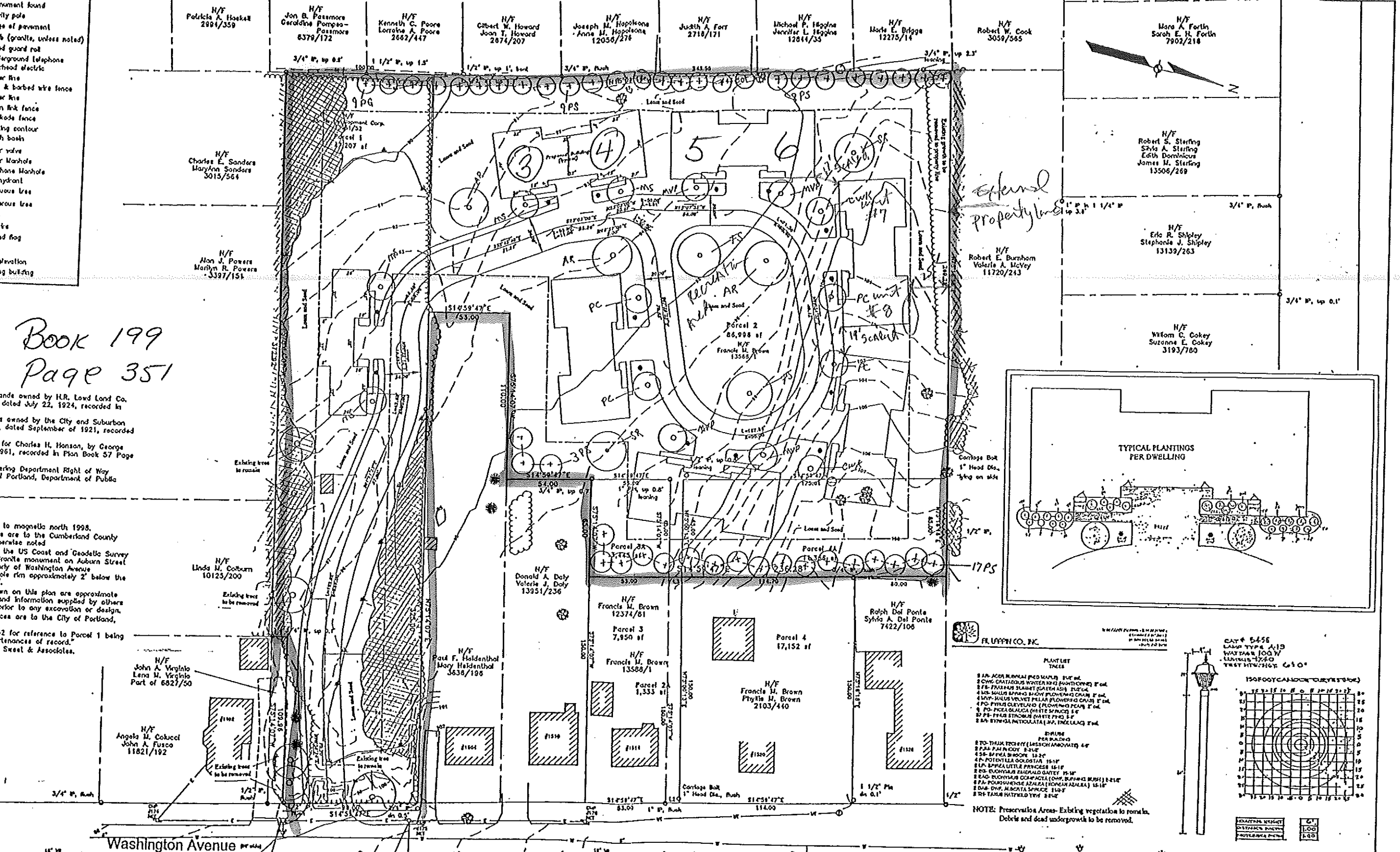


- LEGEND**
- Iron pipe found
  - ⊕ Monument found
  - ⋯ Utility pole
  - Edge of pavement
  - Curb (granite, unless noted)
  - Wood guard rail
  - UT Underground telephone
  - E Overhead electric
  - W Water line
  - X Wire & barbed wire fence
  - S Sewer line
  - Chain link fence
  - Stockade fence
  - Existing contour
  - Catch basin
  - Water valve
  - Sewer Manhole
  - Telephone Manhole
  - Fire hydrant
  - Deciduous tree
  - Coniferous tree
  - Shrub
  - Guy wire
  - Wellhead flag
  - Sky
  - ⊕ Spot elevation
  - ▨ Existing building

Book 199  
Page 351

- References**
- Plan of Portland Highlands owned by H.R. Lord Land Co. Inc., by Ernest W. Branch, dated July 22, 1924, recorded in Plan Book 18 Page 10.
  - Plan of the Highlands owned by the City and Suburban Land Trust, by E.C. Jordan, dated September of 1921, recorded in Plan Book 14 Page 70.
  - Plan of Hanson Manor for Charles H. Hanson, by George Wheaton, dated March of 1961, recorded in Plan Book 57 Page 69.
  - City of Portland Engineering Department Right of Way Plans, on file at the City of Portland, Department of Public Works.

- Notes**
- Bearings are referenced to magnetic north 1998.
  - Book and Page references are to the Cumberland County Registry of Deeds unless otherwise noted.
  - Elevations are based on the US Coast and Geodetic Survey 1929 Datum. Benchmark Granite monument on Auburn Street at second angle point northerly of Washington Avenue (Monument is inside a manhole rim approximately 2' below the sidewalk). Elevation: 95.80'.
  - Locations of utilities shown on this plan are approximate based on field observations and information supplied by others and should be field verified prior to any excavation or design.
  - Tax Map and Lot references are to the City of Portland, Maine.
  - See Book 13981, Page 52 for reference to Parcel 1 being subject to any and all appurtenances of record.
  - Wetlands mapped by R.A. Sweet & Associates.



**PLANT LIST**

1. 8" AR. ACER RUBRA (RED MAPLE) 5' x 6' 1/2"  
 2. 8" CHINESE DATIS (DWARF HYDRANGEA) 5' x 6' 1/2"  
 3. 8" FR. FRAXINUS (WHITE OAK) 5' x 6' 1/2"  
 4. 8" G. MAHONIA (MAHONIA) 5' x 6' 1/2"  
 5. 8" H. S. JUNIPER (HORIZONTAL JUNIPER) 5' x 6' 1/2"  
 6. 8" L. P. C. QUERCUS (WHITE OAK) 5' x 6' 1/2"  
 7. 8" P. B. P. STROBILUS (PINE) 5' x 6' 1/2"  
 8. 8" R. A. SYCAMORE (AMERICAN BEECH) 5' x 6' 1/2"

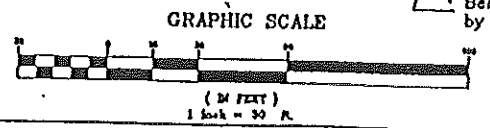
**SPRING PER PLANTING**

1. 2" x 2" x 2" (LARCH/ARBOVITIS) 4"  
 2. 2" x 2" x 2" (SAGE) 4"  
 3. 2" x 2" x 2" (SAGE) 12"  
 4. 2" x 2" x 2" (SAGE) 12"  
 5. 2" x 2" x 2" (SAGE) 12"  
 6. 2" x 2" x 2" (SAGE) 12"  
 7. 2" x 2" x 2" (SAGE) 12"  
 8. 2" x 2" x 2" (SAGE) 12"  
 9. 2" x 2" x 2" (SAGE) 12"  
 10. 2" x 2" x 2" (SAGE) 12"

**NOTE:** Preservation Areas- Existing vegetation to remain. Debris and dead undergrowth to be removed.

**Line Table**

L1	S14°45'53"E	10.00
L2	S14°59'47"E	9.19
L3	S14°59'47"E	8.58



Benchmark: Bonnet nut on hydrant by "O" in "OPEN" - Elev. 101.89'

Area: 149,014 square feet  
3.42 acres

Applicant: Jandle Development Corp.  
2 Flintlock Lane  
Falmouth, ME 04105

**LANDSCAPE, LANDSCAPE PRESERVATION AND LIGHTING PLAN**

1500 Washington Avenue  
Portland, Maine

MADE FOR  
**Jandle Development Corp.**

2 Flintlock Lane  
Falmouth, Maine

JOB# 98050  
DATE: 10/1/98  
SCALE: 1"=30'

BOOK# 678  
DSC# F06558  
AC# A0134  
FREQ# 7807

**Tilcomb Associates**  
133 Gray Road  
Falmouth, Maine 04105