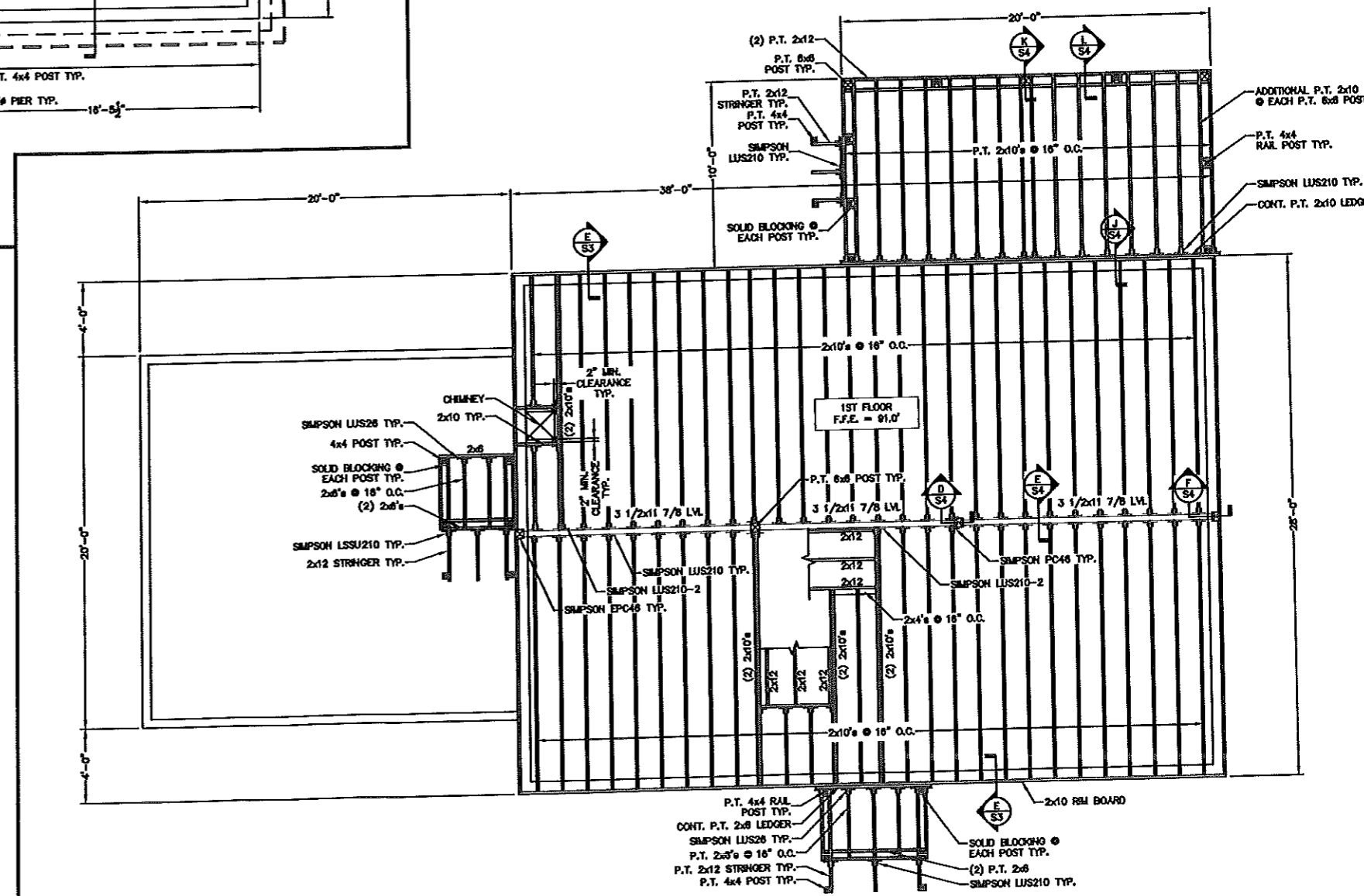
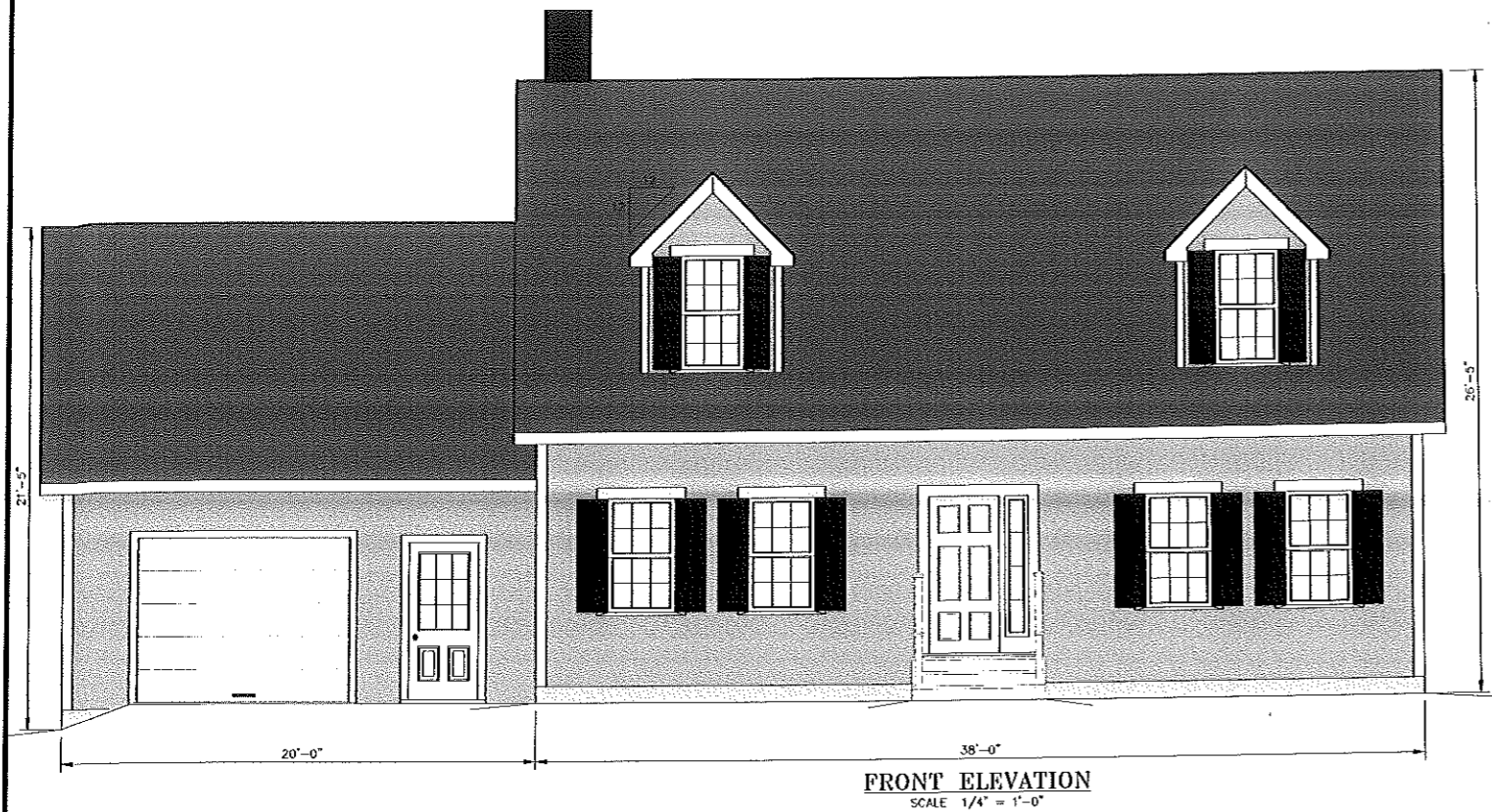


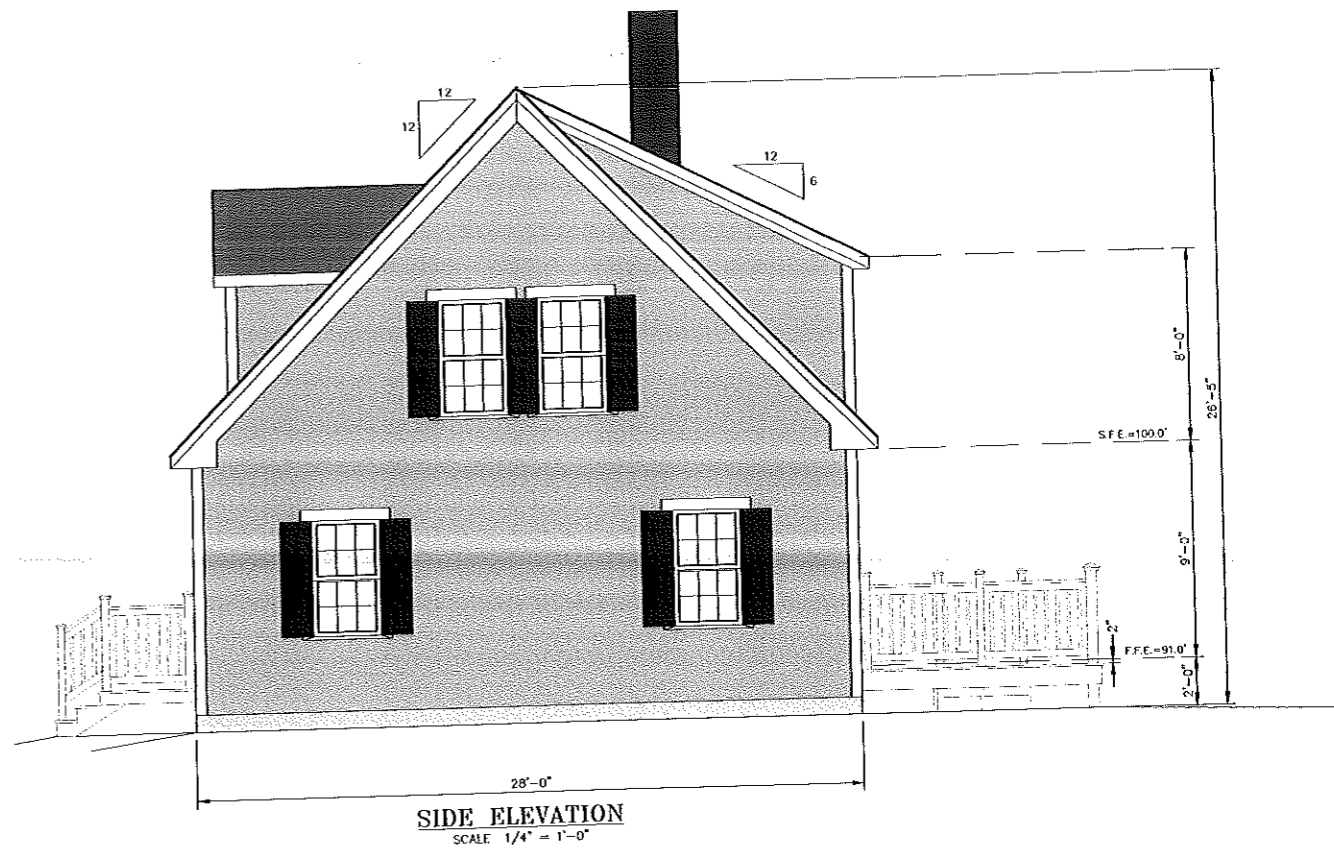
**FOUNDATION PLAN**  
SCALE 1/4" = 1'-0"



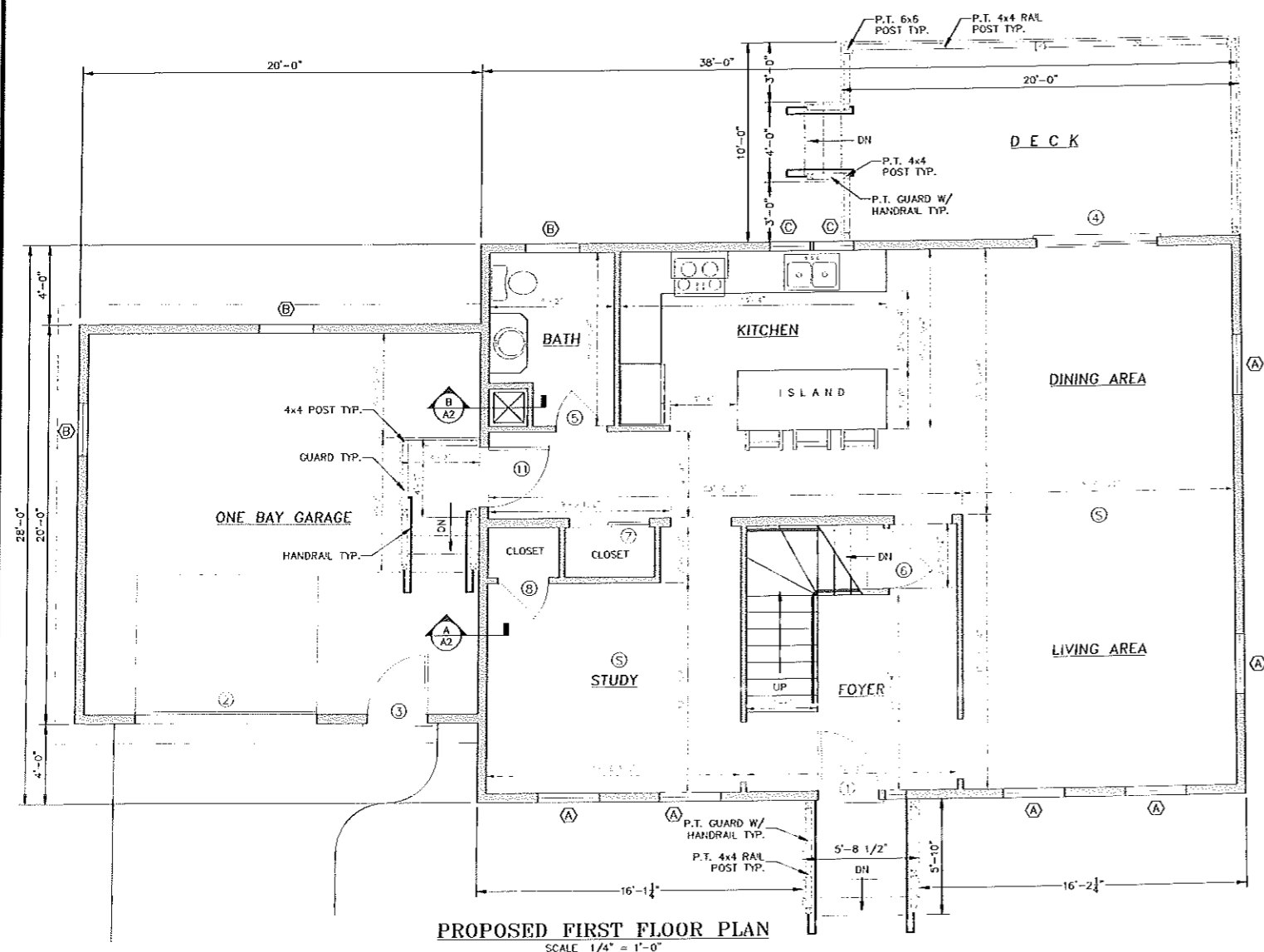
**1ST FLOOR FRAMING PLAN**  
SCALE 1/4" = 1'-0"



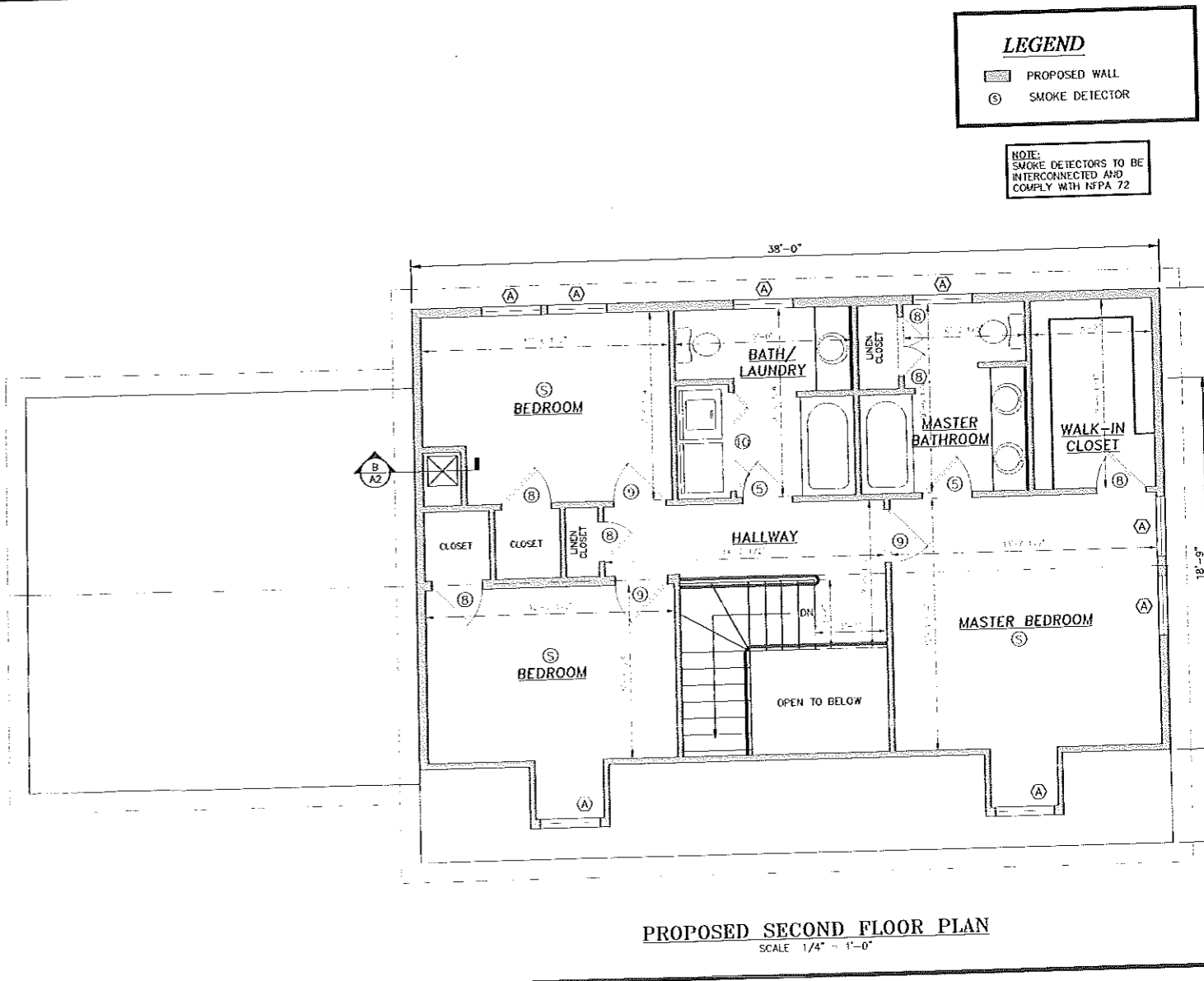
**FRONT ELEVATION**  
SCALE 1/4" = 1'-0"



**SIDE ELEVATION**  
SCALE 1/4" = 1'-0"



**PROPOSED FIRST FLOOR PLAN**  
SCALE 1/4" = 1'-0"

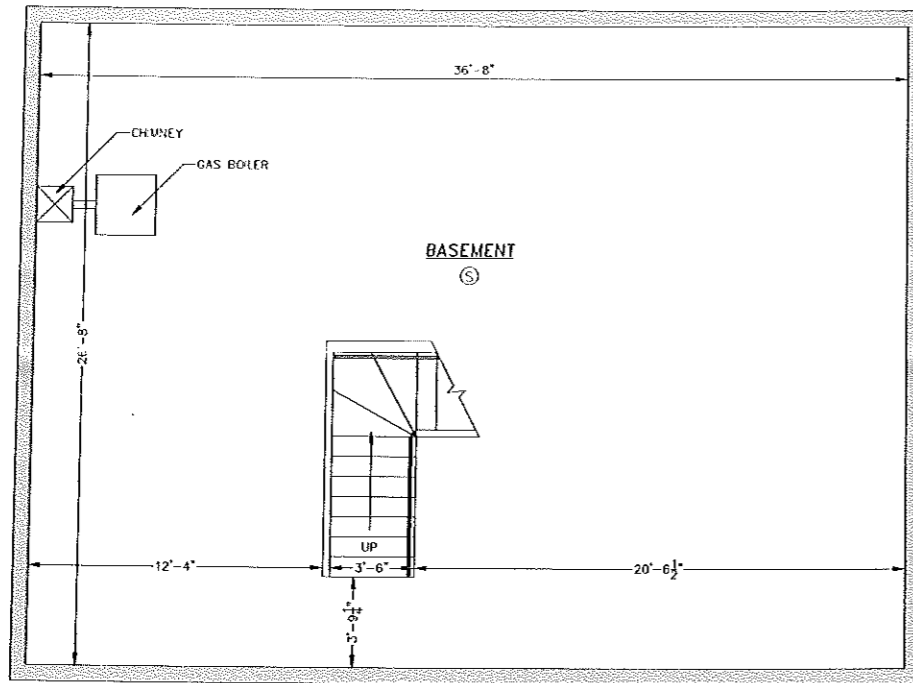


**PROPOSED SECOND FLOOR PLAN**  
SCALE 1/4" = 1'-0"

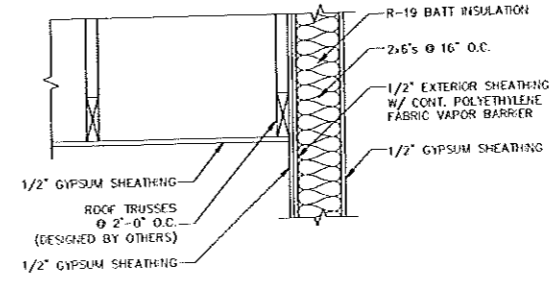
**LEGEND**

- ▭ PROPOSED WALL
- ⊗ SMOKE DETECTOR

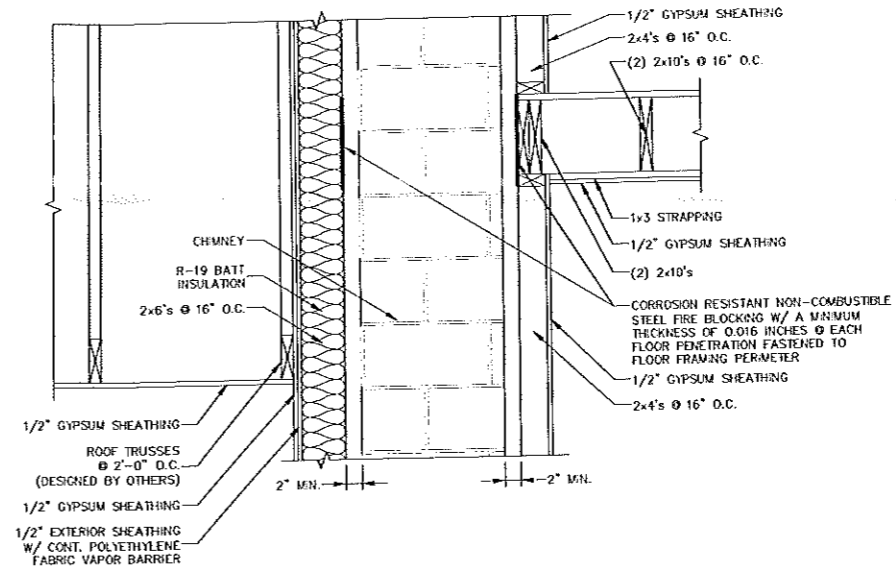
NOTE:  
SMOKE DETECTORS TO BE  
INTERCONNECTED AND  
COMPLY WITH NFPA 72



**BASEMENT PLAN**  
SCALE 1/4" = 1'-0"



**A SECTION**  
SCALE 1" = 1'-0"



**B SECTION**  
SCALE 1" = 1'-0"

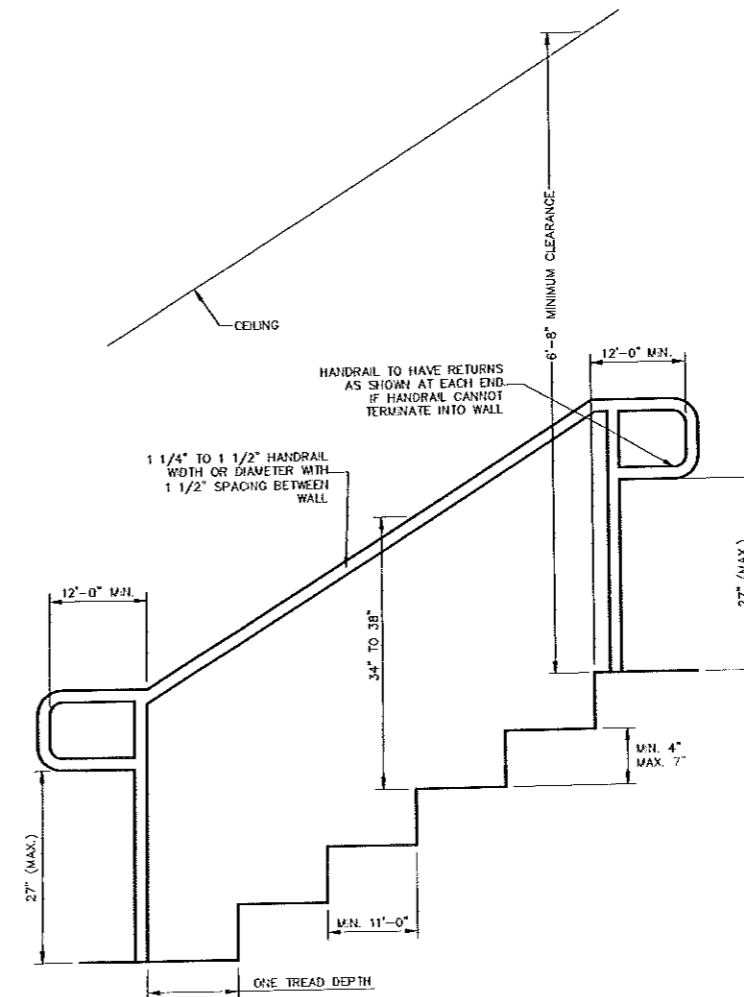
**DOOR SCHEDULE**

NO.	SIZE	QUANTITY	TYPE	FRAME	HARDWARE
①	3'-0" x 6'-8"	1	METAL INSULATED W/ SIDELIGHT	WOOD	HINGES, ENTRY LOCKSET, LEVER HARDWARE, STOP
②	9'-0" x 7'-0"	1	OVERHEAD	METAL	COORDINATE W/ OWNER
③	3'-0" x 6'-8"	1	METAL INSULATED W/ 1/2 GLASS	WOOD	HINGES, ENTRY LOCKSET, LEVER HARDWARE, STOP
④	6'-0" x 6'-8"	1	SLIDING GLASS	WOOD	HINGES, LEVER HARDWARE, LOCKSET
⑤	2'-6" x 6'-8"	3	1 3/4" SOLID BIRCH	METAL	HINGES, LEVER HARDWARE, PRIVACY LOCKSET
⑥	3'-0" x 6'-8"	1	1 3/4" SOLID BIRCH	METAL	HINGES, LEVER HARDWARE, PASSAGE LOCKSET
⑦	4'-0" x 6'-8"	1	SLIDING CLOSET	METAL	HINGES, LEVER HARDWARE, LOCKSET
⑧	VARIES	7	1 3/4" SOLID BIRCH	METAL	HINGES, LEVER HARDWARE
⑨	2'-8" x 6'-8"	3	1 3/4" SOLID BIRCH	METAL	HINGES, LEVER HARDWARE, PASSAGE LOCKSET
⑩	VARIES	1	BIFOLD	METAL	HINGES, LEVER HARDWARE
⑪	3'-0" x 6'-8"	1	METAL INSULATED W/ 1/2 GLASS	WOOD	HINGES, ENTRY LOCKSET, LEVER HARDWARE, 20-MIN FIRE RATED

**WINDOW SCHEDULE**

NO.	QUANTITY	UNIT DIMENSION	TYPE	FRAME	MODEL	U-FACTOR	SHGC	VT
A	14	3'-0" x 4'-9"	ANDERSEN DOUBLE HUNG (EGRESS)	METAL	244DH3049	0.50	0.50	0.50
B	3	2'-8" x 4'-9"	ANDERSEN DOUBLE HUNG	METAL	244DH2849	0.52	0.51	0.51
C	2	2'-0" x 3'-0"	ANDERSEN DOUBLE HUNG	METAL	244DH2030	0.52	0.52	0.52

0.30



**A.D.A. HANDRAIL DETAIL**  
NO SCALE

1.01 GENERAL

- A. NO PROVISIONS HAVE BEEN MADE FOR ANY TEMPORARY CONDITIONS THAT MAY ARISE DURING CONSTRUCTION PRIOR TO THE COMPLETION OF THE STRUCTURE...

CONCRETE NOTES

PART 1 - GENERAL

- 1.01 GENERAL
A. ADHERE TO ACI COLD WEATHER CONCRETE SPECIFICATIONS, WHEN APPLICABLE.

PART 2 - PRODUCTS

- 2.01 MATERIAL
A. REINFORCING
1. SHALL BE GRADE 60, NEW DEFORMED BARS AND SHALL CONFORM TO ASTM A615...

- A. ALL GRADING SHALL BE ACHIEVED AT SUBGRADE TO PROVIDE A CONSTANT THICKNESS OF CONCRETE.
B. STRUCTURAL FILL SHALL BE COMPACTED IN 6" LIFTS TO 95% OF ITS MAXIMUM DRY DENSITY...

3.02 PLACEMENT

- A. CONCRETE SLAB ON GRADE SHALL BE PLACED IN ONE CONTINUOUS PLACEMENT, WITH NO COLD JOINTS. IF COLD JOINTS ARE DESIRED, CONTRACTOR MUST SUBMIT PLACEMENT SEQUENCE AND JOINT DETAIL FOR ENGINEER'S APPROVAL...

DESIGN LOADING

PART 1 - LOADING

- 1.01 DESIGN SOIL BEARING PRESSURE
A. THE DESIGN SOIL BEARING PRESSURE IS ASSUMED TO BE 2,500 PSF.
1.02 DEAD LOAD
A. 1ST FLOOR=10 PSF
B. 2ND FLOOR=10 PSF
C. ROOF=15 PSF

PART 1 - GENERAL

- 1.01 STANDARD SPECIFICATIONS:
A. FABRICATION, ERECTION AND WELDING IN ACCORDANCE WITH THE SPECIFICATIONS FOR STRUCTURAL STEEL BUILDINGS...

1.02 SUBMITTALS

- A. SUBMIT SHOP DRAWINGS FOR REVIEW.
B. STORE STRUCTURAL STEEL MEMBERS AT THE PROJECT SITE ABOVE GROUND ON PLATFORMS, SKIDS, OR OTHER SUPPORTS.

PART 2 - PRODUCTS

- 2.01 MATERIALS:
A. STEEL SHAPES, BARS, AND PLATES WILL BE ASTM A-36.
B. STRUCTURAL TUBING AND COLUMNS WILL BE ASTM 600, GRADE B.

PART 3 - EXECUTION

- 3.01 FABRICATION:
A. FABRICATE STRUCTURAL STEEL IN ACCORDANCE WITH THE REQUIREMENTS OF THE DRAWINGS.
B. SHOP PART SURFACES OF ALL STEEL WORK WITH FABRICATOR'S STANDARD RUST INHIBITIVE PAINT...

3.02 ERECTION

- A. THE STRUCTURAL STEEL SHALL BE ERECTED PLUMB AND TRUE TO THE LINES AND ELEVATIONS INDICATED ON THE DRAWINGS.
B. ERECTION TOLERANCES SHALL BE WITHIN THE LIMITS SPECIFIED IN THE "AISC CODE OF STANDARD PRACTICE" (LATEST EDITION).

1.01 STANDARD SPECIFICATION

- A. THE LATEST ADDITION OF WTCA SHALL APPLY.
B. TRUSS MANUFACTURER TO DESIGN LATERAL LONGITUDINAL BRACING. FINAL TRUSS PLANS TO BE STAMPED BY MANUFACTURER'S ENGINEER.

PART 2 - PRODUCTS

- 2.01 MATERIAL
A. ALL METAL TIMBER CONNECTORS SHALL BE HOT-DIPPED GALVANIZED.
B. ALL BOLTS, NUTS, AND WASHERS ARE TO BE ASTM A307, HOT-DIPPED GALVANIZED.

PART 3 - ERECTION

- 3.01 PRODUCT STORAGE:
A. STORE TRUSSES AT THE PROJECT SITE ABOVE GROUND ON PLATFORMS, SKIDS, OR OTHER SUPPORTS.
B. PROTECT FROM CORROSION.
3.02 FABRICATION:
A. FABRICATE TRUSSES IN ACCORDANCE WITH THE REQUIREMENTS OF THE DRAWINGS.

WOOD NOTES:

PART 1 - GENERAL

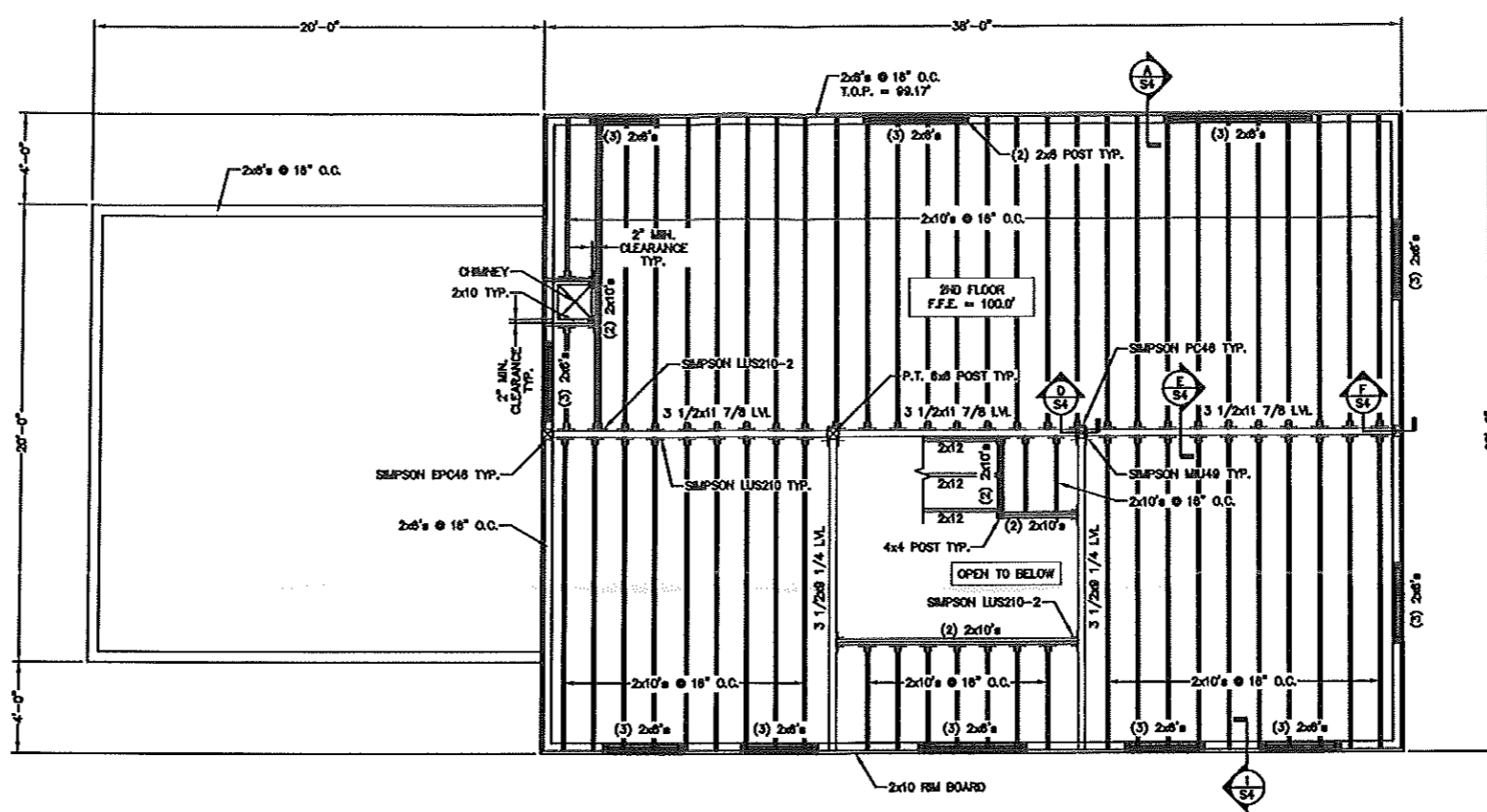
- 1.01 STANDARD SPECIFICATIONS
A. THE CURRENT AITC SPECIFICATION SHALL APPLY.

PART 2 - PRODUCTS

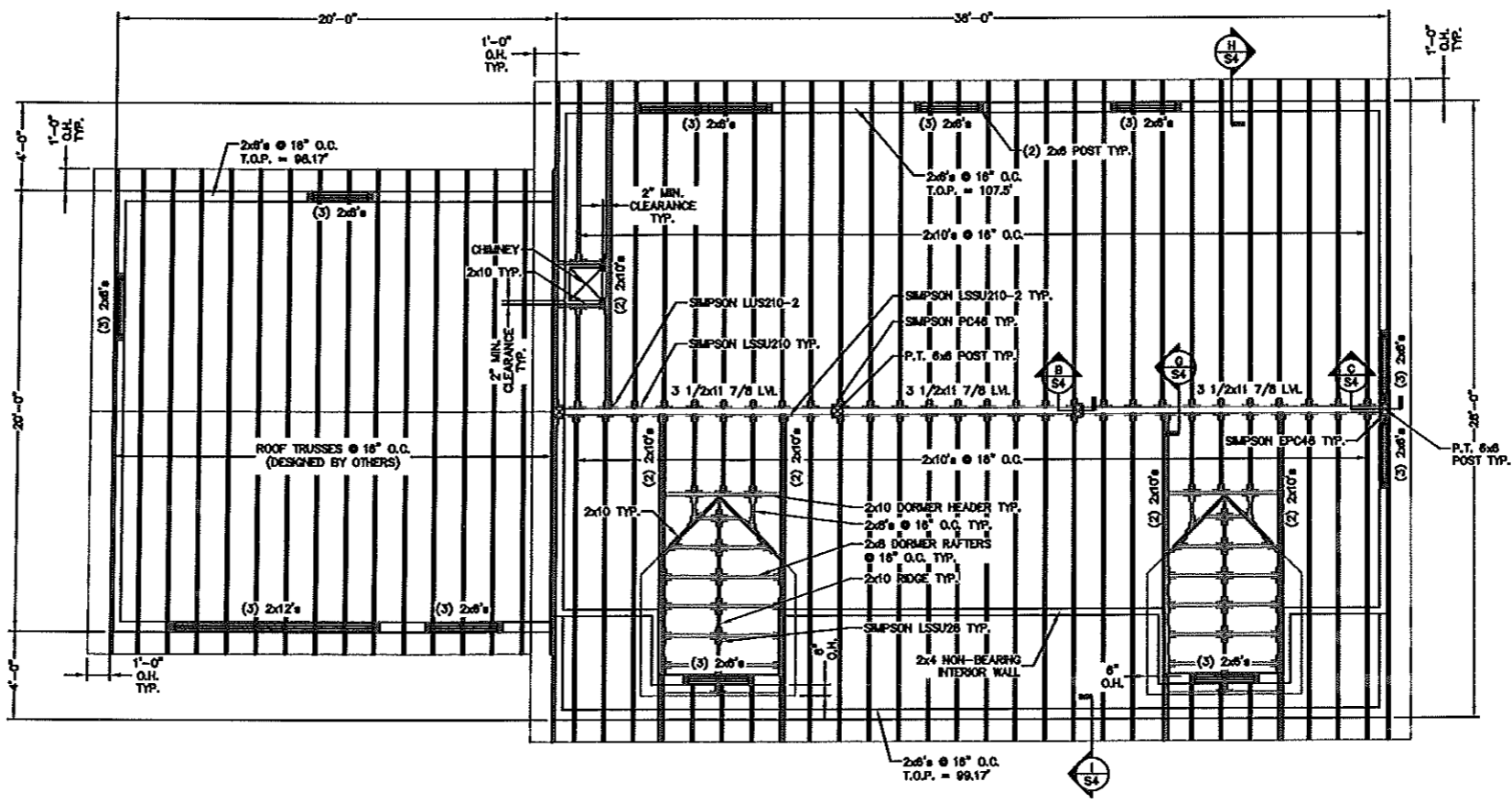
- 2.01 MATERIAL
A. ALL TIMBER IN CONTACT WITH MASONRY AND CONCRETE OR FRAMING LABELED "P.T." SHALL BE PRESSURE TREATED SOUTHERN PINE GRADE #1 WITH A MINIMUM Fb OF 1,350 PSI AND E OF 1,500 KSI OR BETTER.

PART 3 - EXECUTION

- 3.01 ERECTION
A. PROVIDE SAME SIZE SOLID BRIDGING/BLOCKING AT MID SPAN FOR ALL JOISTS.
B. FOR EXTERIOR WALLS (2X6) PROVIDE:
1. 3-2X6'S AT CORNERS
2. DOUBLE PLATE WITH 4" MIN. SPLICE SEPARATION. ALL SPLICES SHALL OCCUR OVER STUDS.



**2ND FLOOR FRAMING PLAN**  
SCALE 1/4" = 1'-0"



**ROOF FRAMING PLAN**  
SCALE 1/4" = 1'-0"