

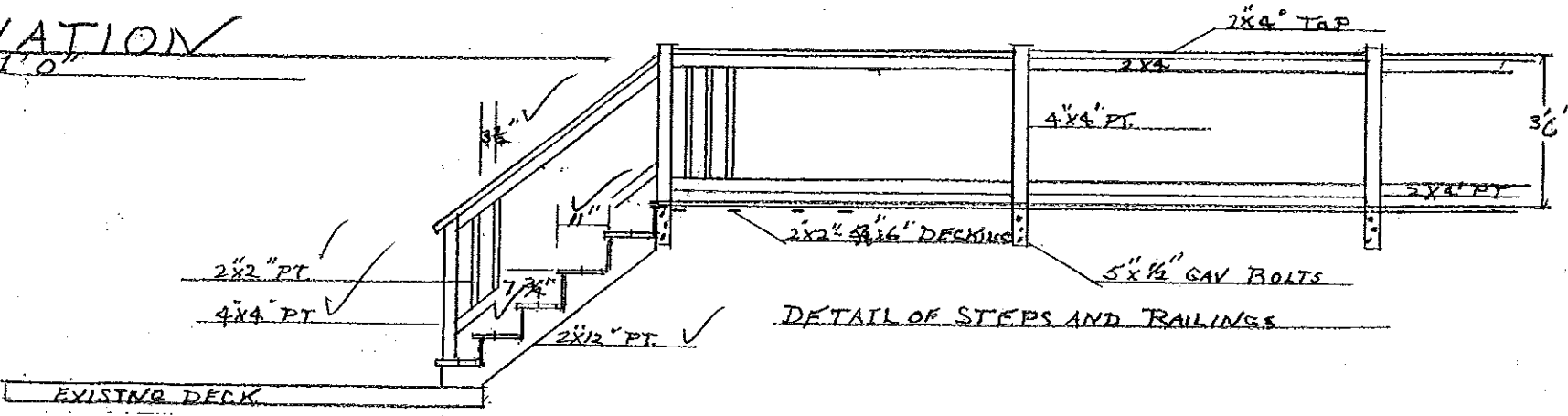
Garage
205+George St

REGISTERED
OCT 9 2004



FRONT ELEVATION
SCALE 1/4" = 1'-0"

Garage
20 St George St



SIDE LINE

6'2"

8'2"

24'

28'

5'

28' x 02

8'

16'6"

3-2x10's
OK-8' span

24'

24'14"

4" LALLY

28' x 68"

D.N. CELLAR

EXISTING HOUSE

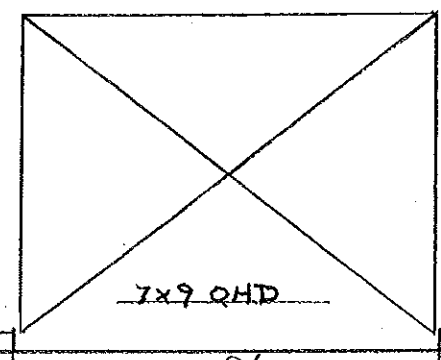
BACK LINE

5'

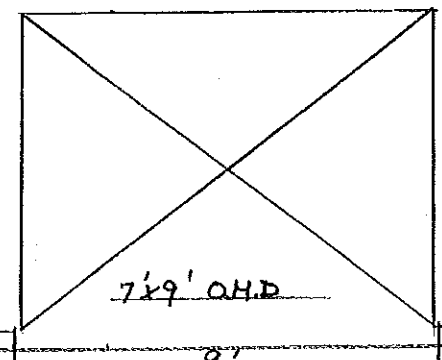
28' x 02

8'

7'6"



7x9' OHD



7x9' OHD

28'6"

2'

9'

2'

9'

2'

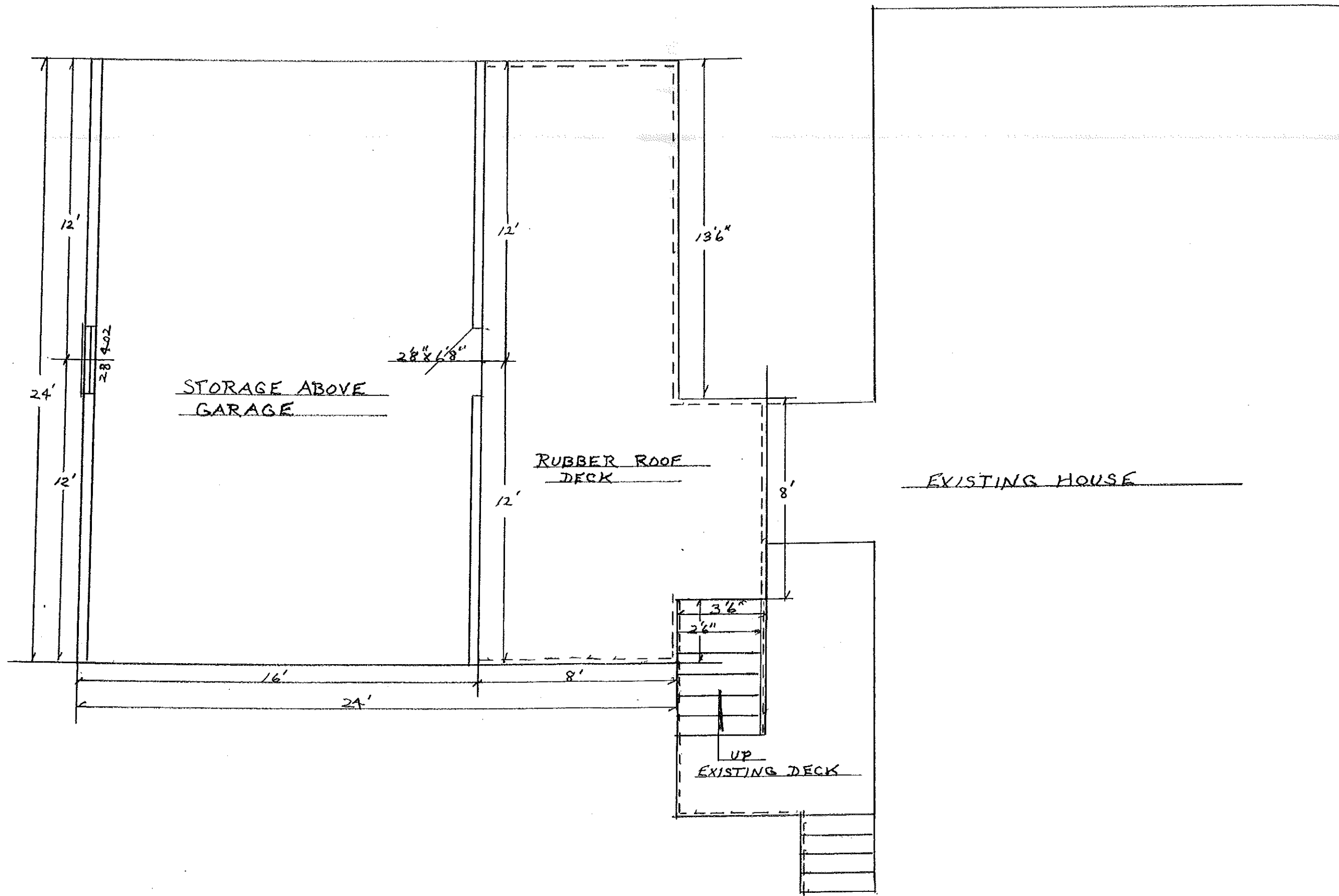
24'

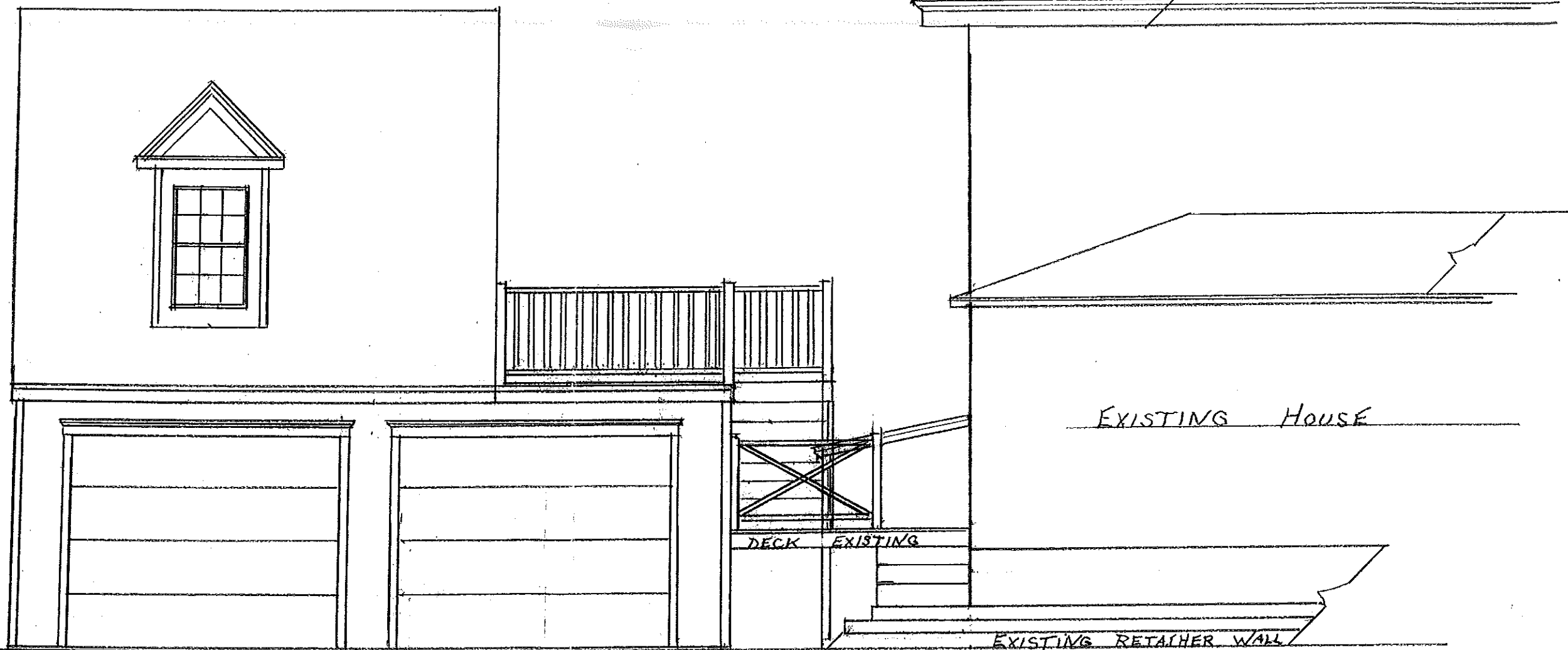
24' x 24' NEW GARAGE
SCALE 1/4" = 1'0"

34'6"

38'6"

SIDE LINE





SEP 13 2011
M. G. B. I. W. E. L. A.

FRONT ELEVATION
SCALE 1/4" = 1'0"

EXISTING HOUSE

DECK EXISTING

EXISTING RETAINER WALL

SIDE LINE

6'2"

8'2"

28'

24'

5'

8" ANCHOR BOLTS

2x8" FLOOR JOIST 16" O.C.

3-2x10" BEAM

2x8" K.O.Z.

16'6"

8'

24'

24'14"

4" LALLY

28'x68"

D.N. CELLAR

EXISTING HOUSE

2x8" K.O.Z.

8'

7'6"

7x9' O.H.D.

7x9' O.H.D.

5'

2'

9'

2'

9'

2'

24'

24'x24' NEW GARAGE
SCALE 1/4" = 1'0"

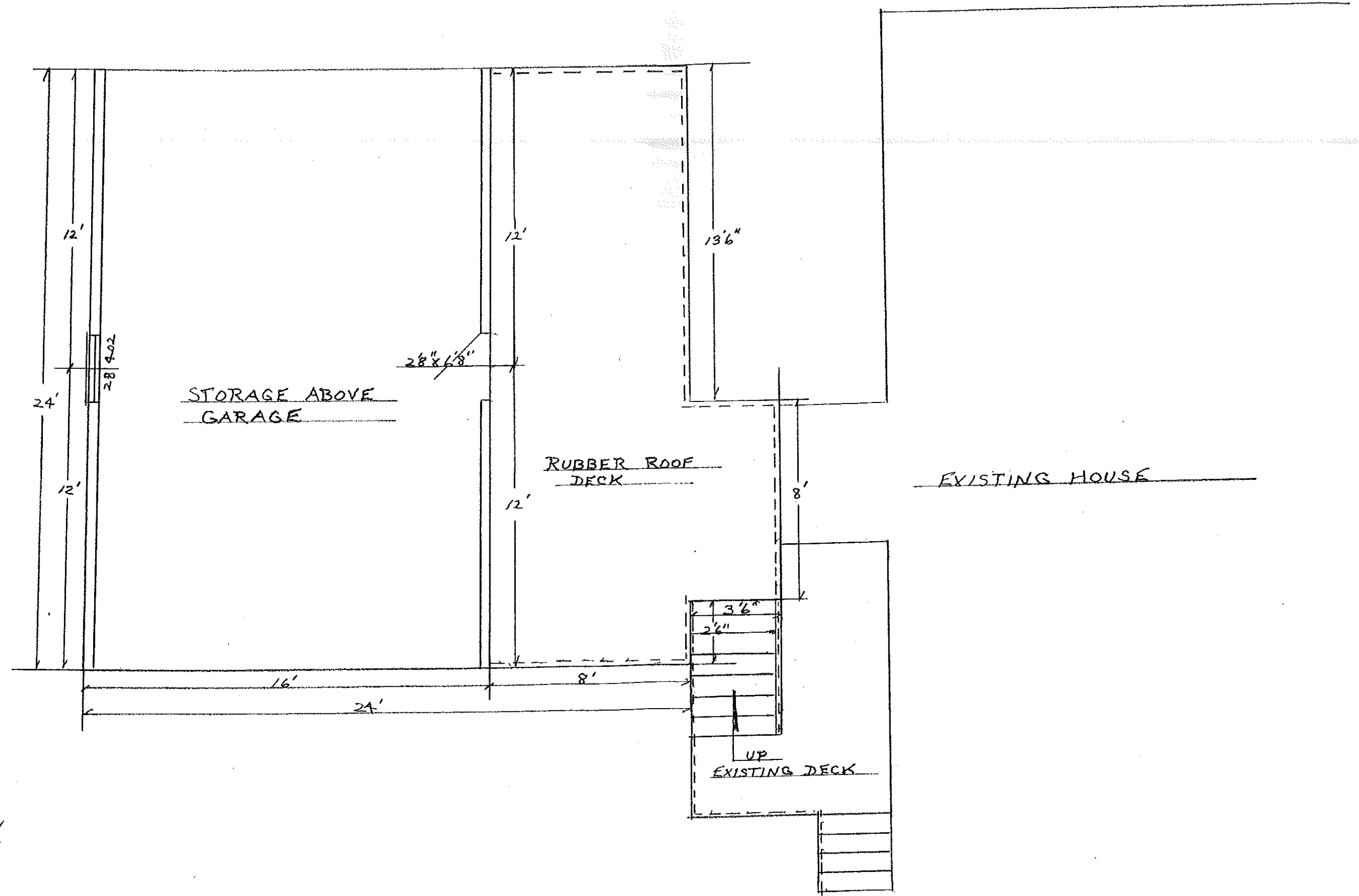
BACK LINE

Garage
20 St. George St.

SIDE LINE

100

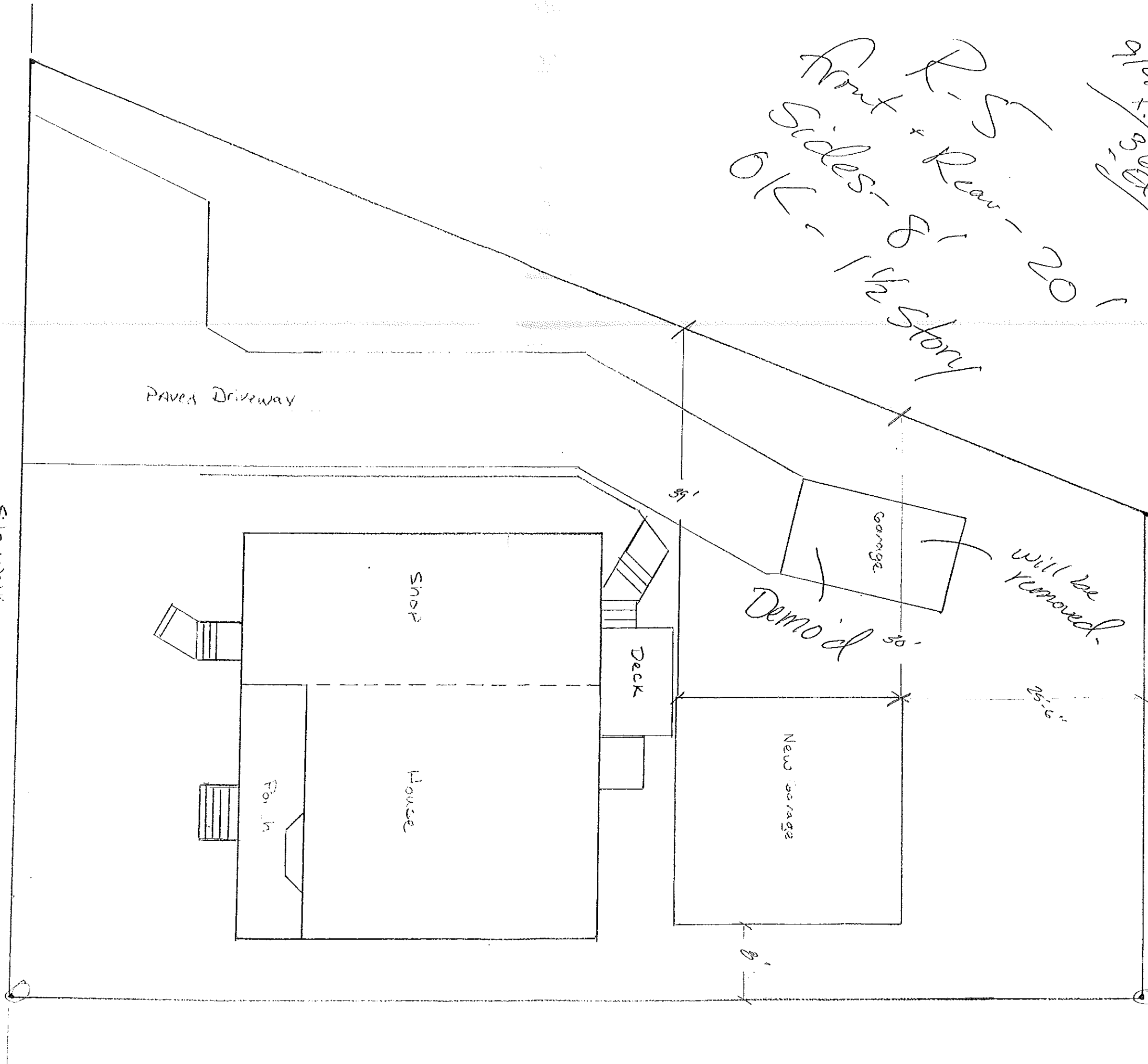
PLAN
NO. 9 100



Garage
20 St. George St.

Front P.S.
Sides - 8' 1 1/2 story
OK, Rear - 20'

all P.D. existing
SF Allowed
1366 sq ft OK



20 St. George Street
Scale 3/32 = 1'-0"

175-2623
Butler
A1

