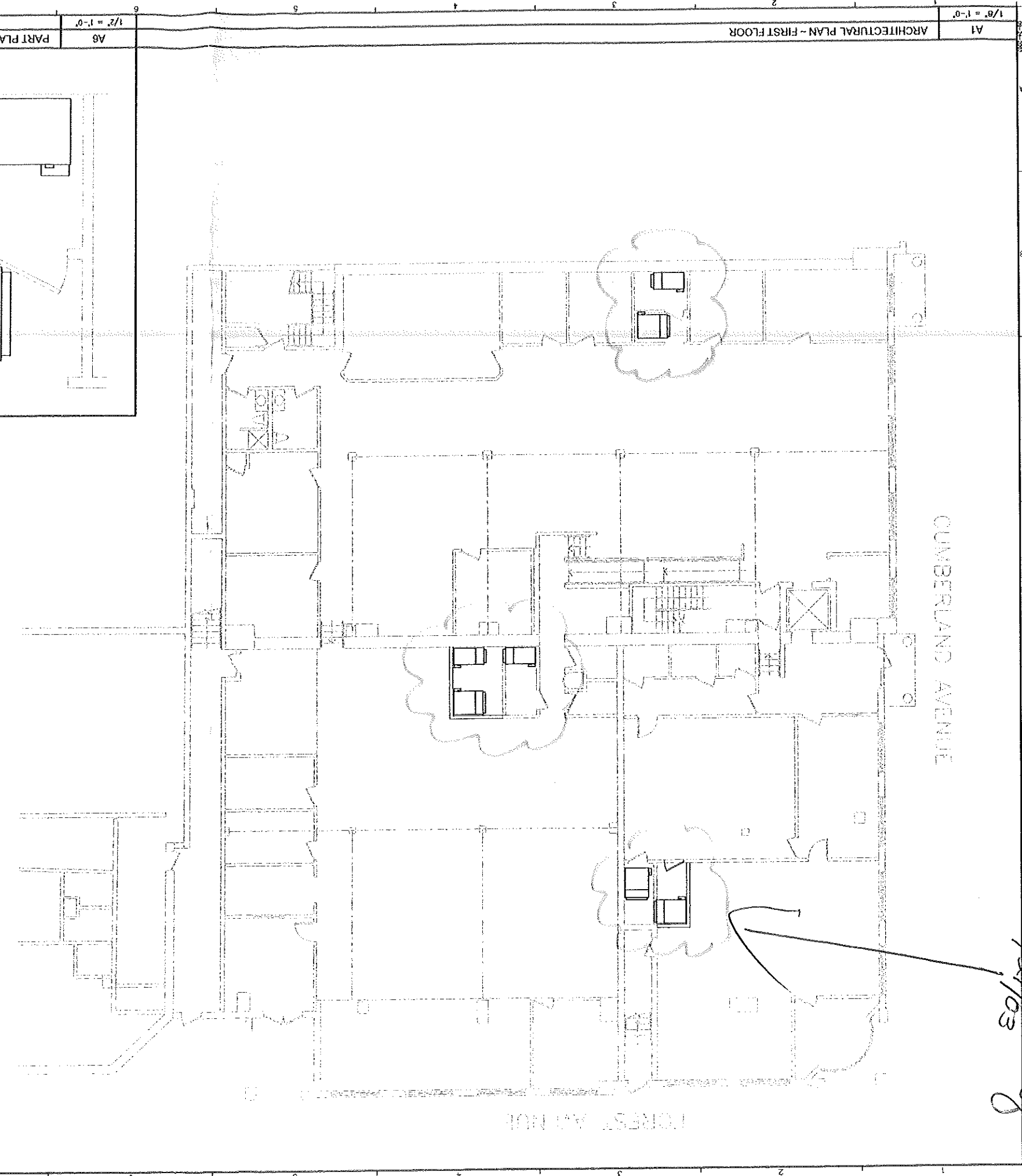


See Amendment #2
11/24/03

CUMBERLAND AVENUE

FOREST AVENUE

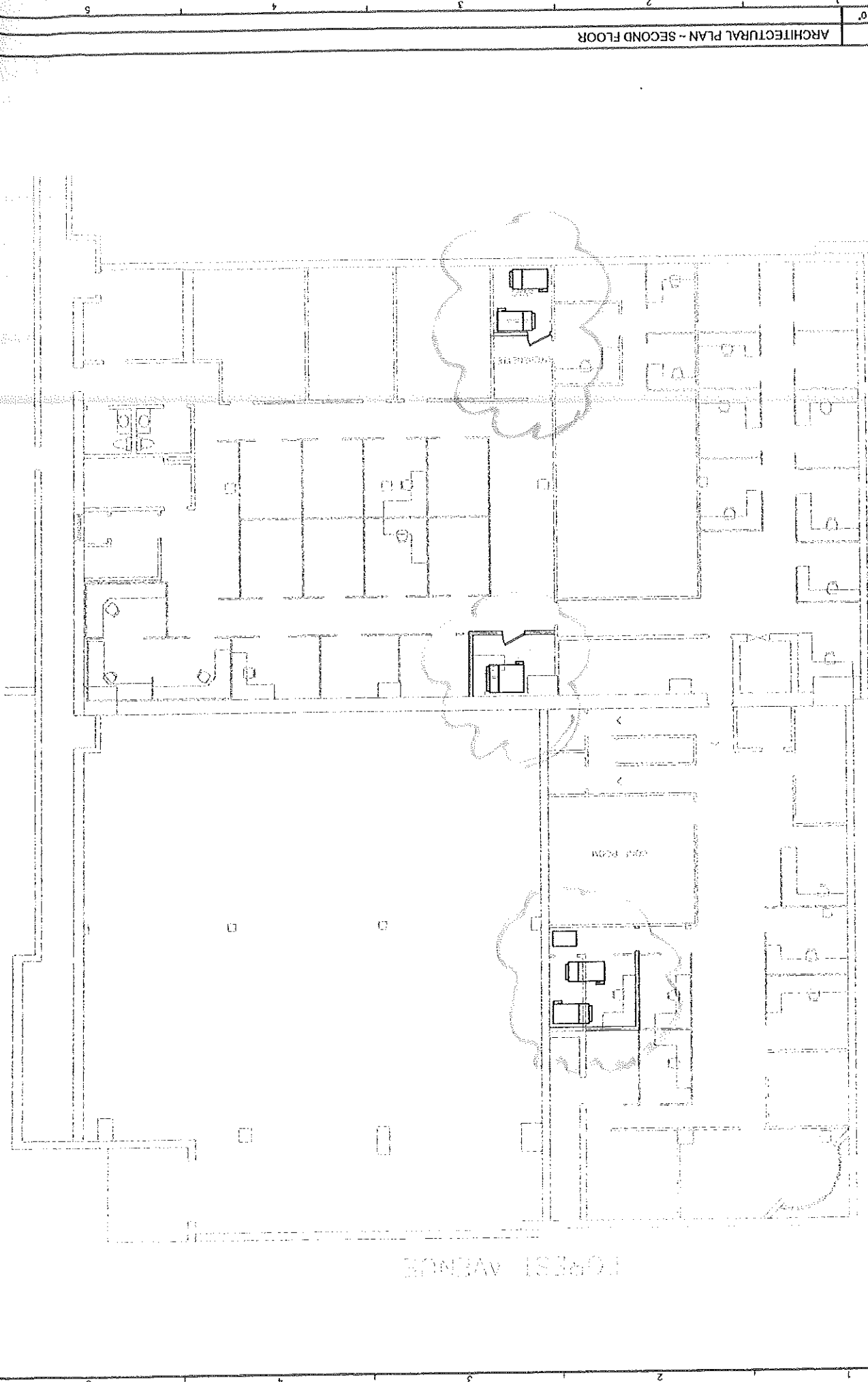


A1 ARCHITECTURAL PLAN - FIRST FLOOR 1/8" = 1'-0"		A6 PART PLAN - MECH RM No. 3 1/2" = 1'-0"		A8 PART PLAN - MECH RM No. 2 1/2" = 1'-0"	
A-100		A-100		A-100	
ARCHITECTURAL PLAN - FIRST FLOOR		ARCHITECTURAL PLAN - FIRST FLOOR		ARCHITECTURAL PLAN - FIRST FLOOR	
MMC - GATEWAY HVAC IMPROVEMENTS PORTLAND, MAINE		MMC - GATEWAY HVAC IMPROVEMENTS PORTLAND, MAINE		MMC - GATEWAY HVAC IMPROVEMENTS PORTLAND, MAINE	
Drawn By: REV	Checked By: JS	Drawn By: REV	Checked By: JS	Drawn By: REV	Checked By: JS
Project Mgr: JAW	Project No: C0053	Project Mgr: JAW	Project No: C0053	Project Mgr: JAW	Project No: C0053
Code File: C0053.MXD	Scale: 0	Code File: C0053.MXD	Scale: 0	Code File: C0053.MXD	Scale: 0
NUMBER	DATE	BY	DESCRIPTION	NUMBER	DATE
DEPT. OF BUILDING INSPECTION CITY OF PORTLAND, ME SEP 26 2003		D8 PART PLAN - MECH RM No. 1 1/2" = 1'-0" OPTION No. 1		D8 PART PLAN - MECH RM No. 1 1/2" = 1'-0" OPTION No. 1	
aligned engineering, inc. FULL SERVICE CONSULTING ENGINEERS STRUCTURAL • MECHANICAL • ELECTRICAL • ENVIRONMENTAL • CONSTRUCTION ADMINISTRATION One Madison Avenue, Portland, Maine 04103-2004 Telephone: 207-864-1111 • Fax: 207-864-0202 E-Mail: info@aligned-engineering.com • www.aligned-engineering.com		aligned engineering, inc. FULL SERVICE CONSULTING ENGINEERS STRUCTURAL • MECHANICAL • ELECTRICAL • ENVIRONMENTAL • CONSTRUCTION ADMINISTRATION One Madison Avenue, Portland, Maine 04103-2004 Telephone: 207-864-1111 • Fax: 207-864-0202 E-Mail: info@aligned-engineering.com • www.aligned-engineering.com		aligned engineering, inc. FULL SERVICE CONSULTING ENGINEERS STRUCTURAL • MECHANICAL • ELECTRICAL • ENVIRONMENTAL • CONSTRUCTION ADMINISTRATION One Madison Avenue, Portland, Maine 04103-2004 Telephone: 207-864-1111 • Fax: 207-864-0202 E-Mail: info@aligned-engineering.com • www.aligned-engineering.com	

1/8" = 1'-0"

A1

ARCHITECTURAL PLAN - SECOND FLOOR



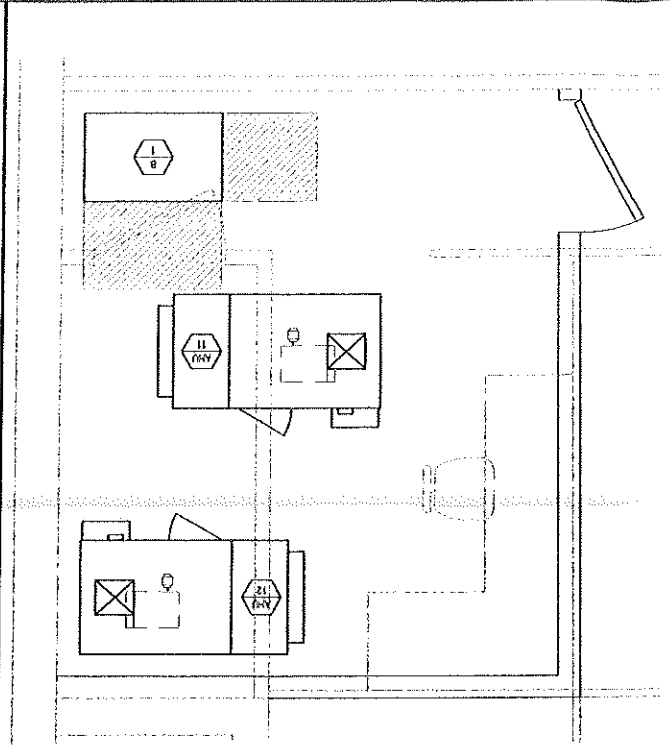
CUMBERLAND AVENUE

FOREST AVENUE

1/2" = 1'-0"

A6

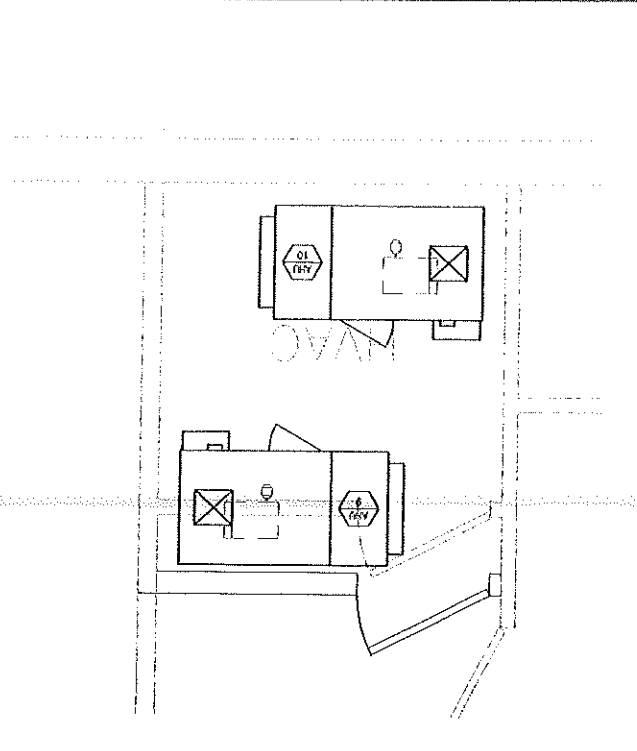
PART PLAN - MECH RM No. 7



1/2" = 1'-0"

A8

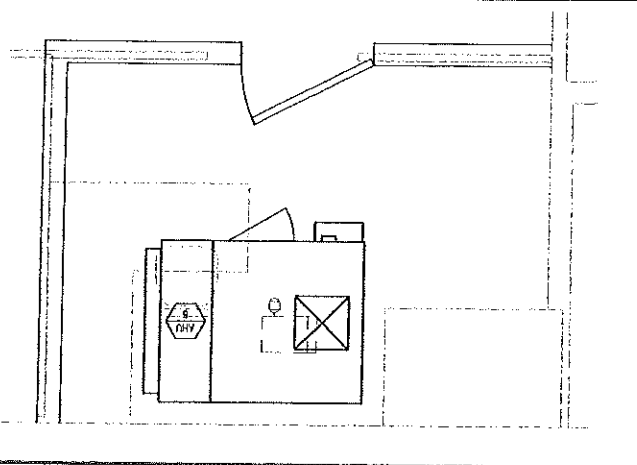
PART PLAN - MECH RM No. 6



1/8" = 1'-0"

D8

PART PLAN - PROPOSED MECH RM No. 8



A.101

ARCHITECTURAL PLAN - SECOND FLOOR

MIMC - GATEWAY HVAC IMPROVEMENTS
PORTLAND, MAINE

DATE: _____
 DRAWN BY: GEV
 CHECKED BY: JAW
 PROJECT: MIMC
 CAD FILE: 030324.DWG
 GRAPHIC: 0
 SCALE: 1"

REVISIONS

NUMBER	DATE	BY	DESCRIPTION

DEPT. OF BUILDING INSPECTION
 CITY OF PORTLAND, ME
 SEP 26 2003
 REVIEW

allied *engineers, inc.*
 FULL SERVICE CONSULTING ENGINEERS
 ARCHITECTURAL, MECHANICAL, ELECTRICAL, ENVIRONMENTAL, CONSTRUCTION ADMINISTRATION
 ONE WASHINGTON SQUARE, PORTLAND, MAINE 04101
 TELEPHONE: 603.761.4222 FAX: 603.761.4223
 E-MAIL: info@allied-engineers.com www.allied-engineers.com



