

ROOF RIDGE ELEV. 87.11'

2ND FLOOR ELEV. 75.14'

1ST FLOOR ELEV. 65.49'

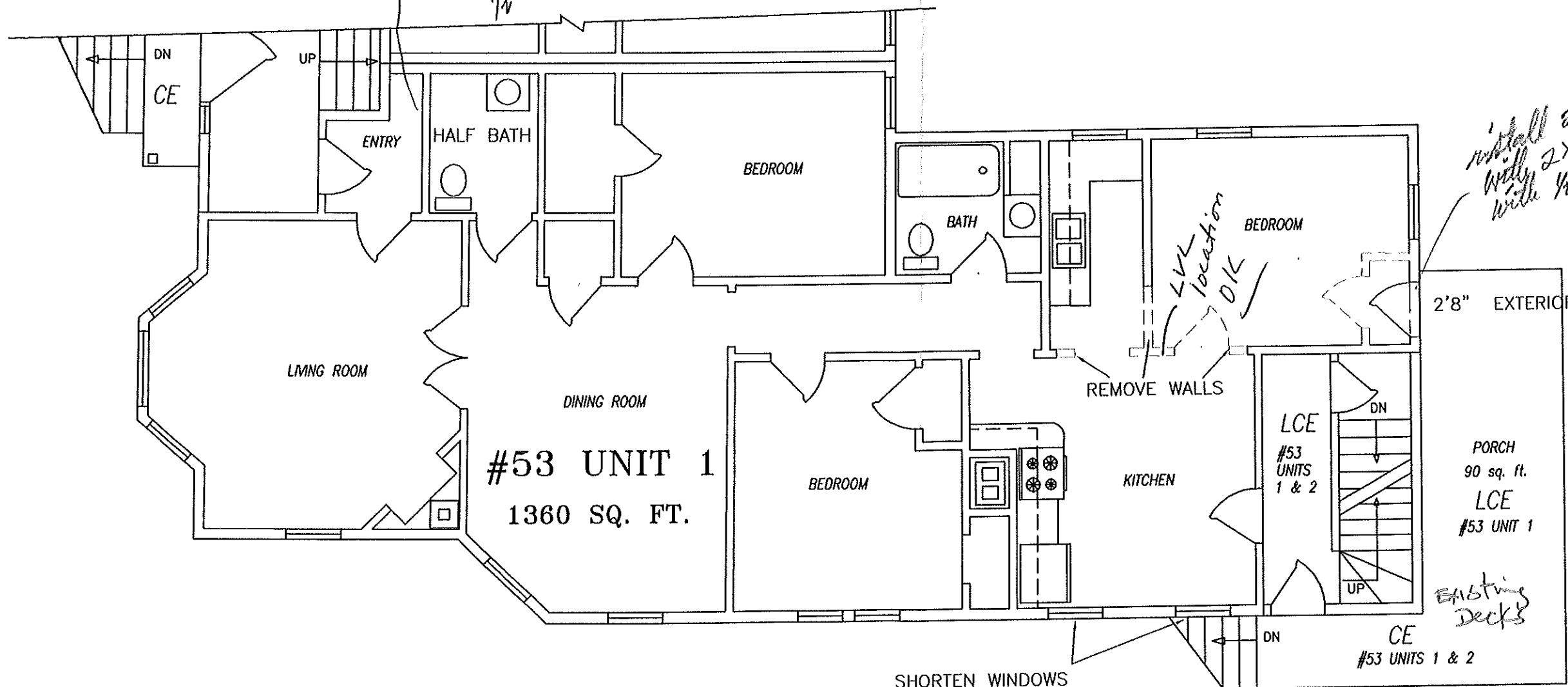
BASEMENT FLOOR ELEV. 58.22'



NOT TO SCALE

*9' ceiling
7' wall; studs 16 oc.
1/2" sheetrock both sides*

PAYSON STREET



*install 2x4 studs
with 2x6 header
with 1/2" plywood*

2'8" EXTERIOR DOOR

#53 UNIT 1
1360 SQ. FT.

PORCH
90 sq. ft.
LCE
#53 UNIT 1

*EXISTING
Decks*

SHORTEN WINDOWS
FROM 2'8" X 5'5" TO 2'8" X 3'9"

LCE
#53
UNITS
1 & 2

CE
#53 UNITS 1 & 2

*LVL
location
OK*

REMOVE WALLS