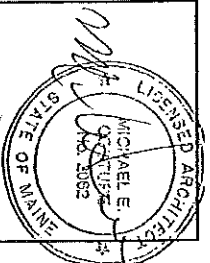


FLOOR FRAMING DETAIL
 ANS/UL 263, DESIGN # L511
 2 HOUR RATED ASSEMBLY



ARCHITECT:
 MICHAEL E. COUTURE, ARCHITECT
 PO BOX 2086
 N. CONWAY, NH
 (603) 356-9606
 (603) 356-0888 (FAX)
 jmceast@adelphia.net

PROJECT NAME:
 DAMBRIE PROPERTY
 929 CONGRESS STREET
 PORTLAND, MAINE

SHEET TITLE
 2 HOUR FLOOR ASSEMBLY

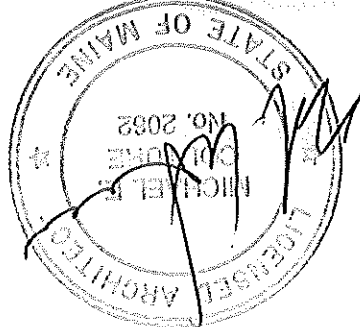
DRAWN BY:
 MEC

SCALE:
 1/2" = 1'-0"

DATE:
 12.01.06

SHEET NUMBER

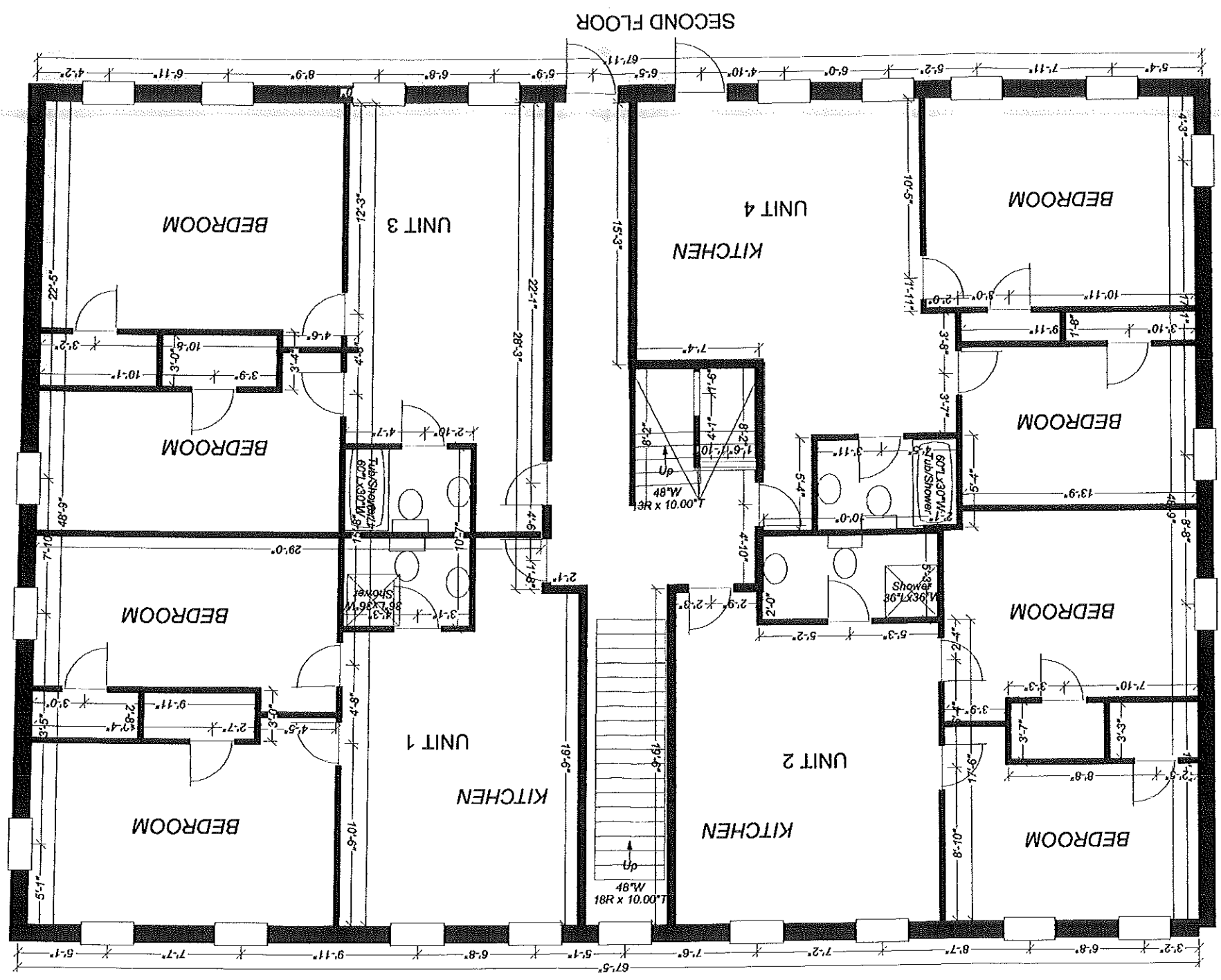
A-201



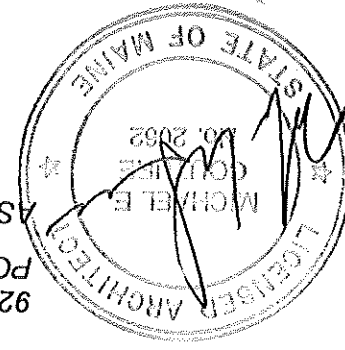
929 CONGRESS STREET
PORTLAND, ME
AS-BUILT 03.02.07

MICHAEL E. COUTURE
PO BOX 2086
N. CONWAY, NH
603 356-9606
jmc east@roadrunner.com

SECOND FLOOR



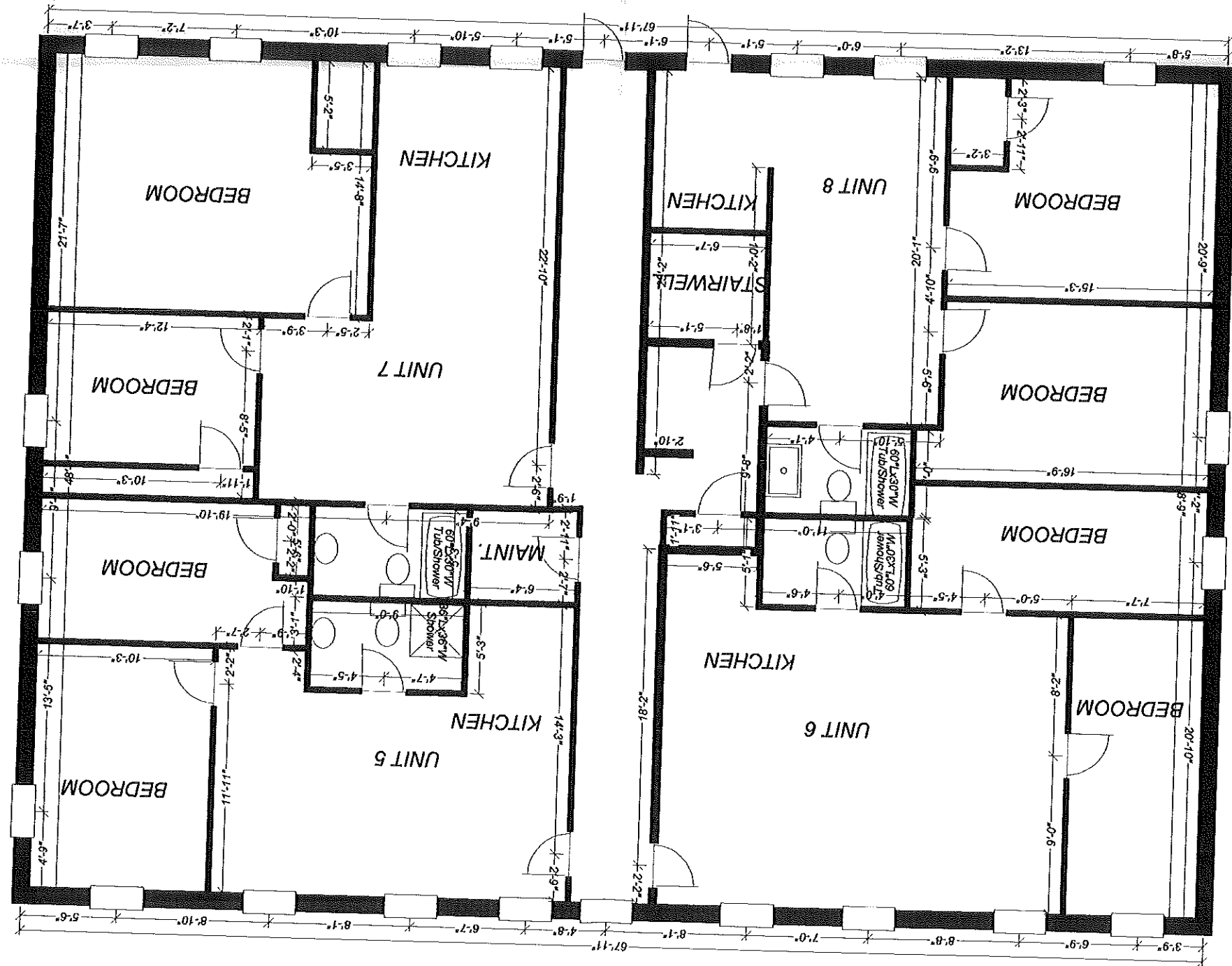
SECOND FLOOR

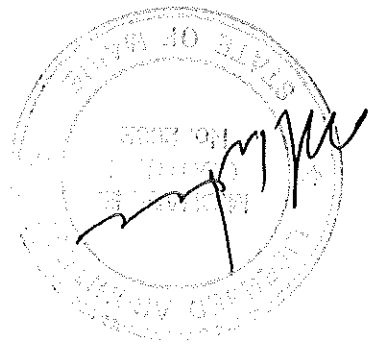


929 CONGRESS STREET
PORTLAND, ME
AS-BUILT 03.02.07

MICHAEL E. COUTURE
PO BOX 2086
N. CONWAY, NH
603 356-9606
jmc east@roadrunner.com

THIRD FLOOR

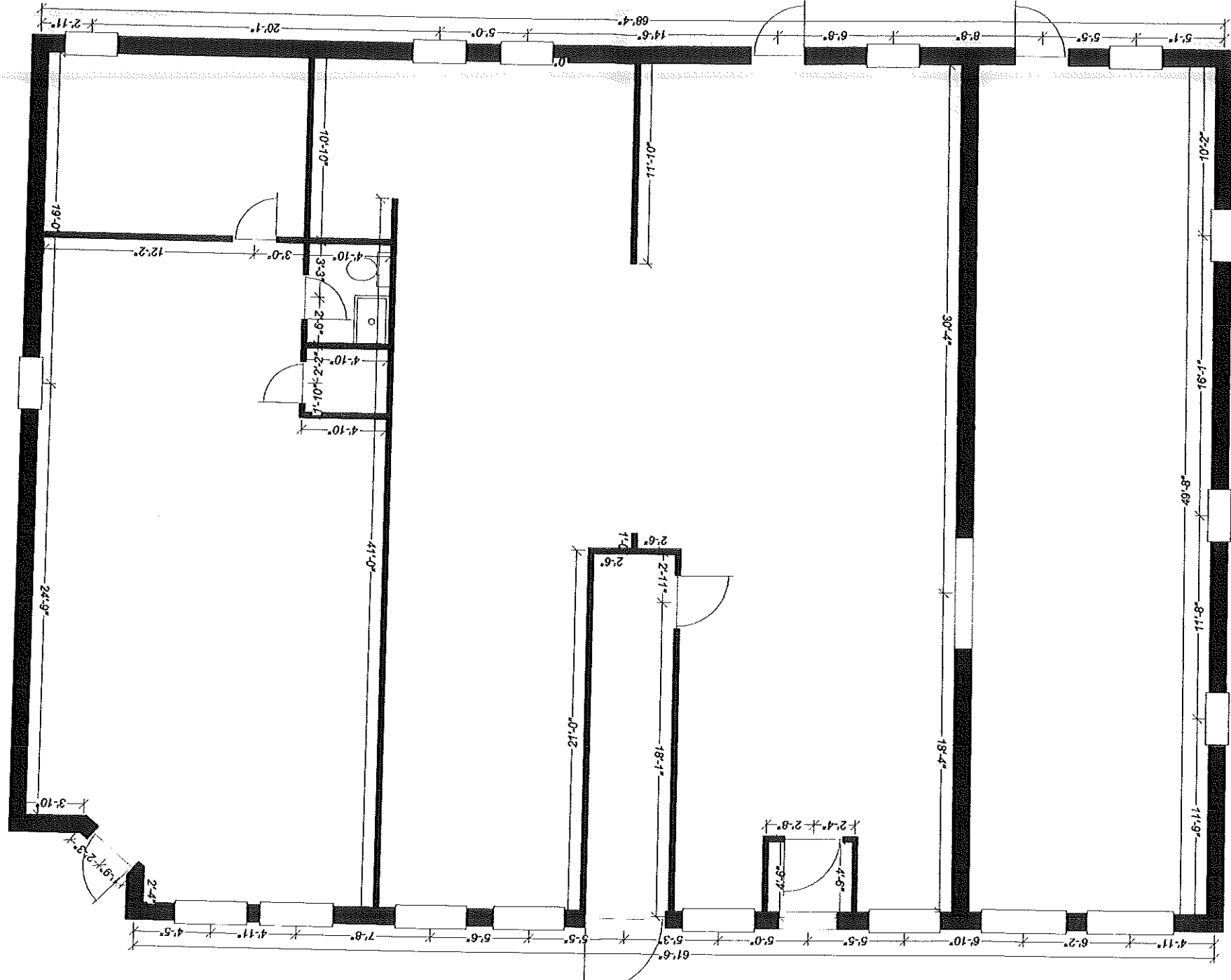




929 CONGRESS STREET
 PORTLAND, ME
 AS-BUILT 03.02.07

MICHAEL E. COUTURE
 PO BOX 2086
 N. CONWAY, NH
 603 356-9606
 jmc east@roadrunner.com

FIRST FLOOR



Congress St.

68.33' x 49.49' = 3393.95
 5 x 21 = 105
 2 x 6 = 12
 3247 ÷ 334 = 9.7 spans
 1 span = 334'
 Charges for office in B-2
 10 spans.

SHEET 76 B

13
10908

SHEET 75 - B

SHEET 73 - B

(A) RIGHT OF WAY

MAINE CENTRAL RAILROAD COMPANY

8
38104

12
4700

10
7072

230,791

STREET

STREET

JOHN

VALLEY

(B)

(D)

(F)

SHEET 65-C

SHEET 53-C

No 64

SHEET 54

CITY OF PORTLAND

SHEET 68-D

WESTERN SHEET 63-D

ESPLANADE

PROMENADE

GILMAN

CITY OF PORTLAND
ASSESSORS PLAN
SCALE 1" = 50'

