

ROUTED OPENINGS IN EXISTING SIGN BAND. BAND SECTIONS HAVE ADDED EXISTING COVER-UP PAINTED METAL LAYER.

3/16" WHITE TRANSLUCENT PLASTIC PUSH-THRU SEALED TO 1/8" WHITE TRANSLUCENT PLASTIC BACKER

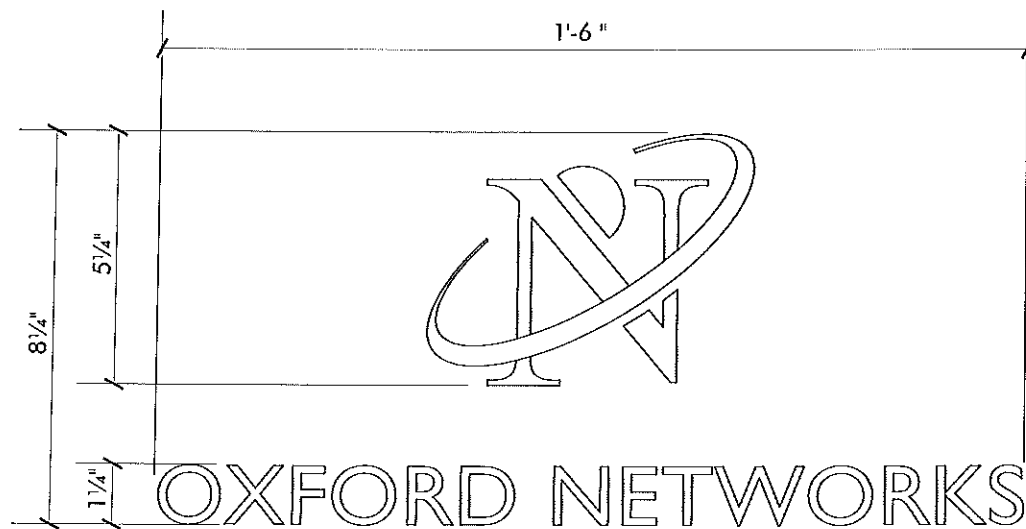
BLACK VINYL COPY
BLACK AND MATCH PMS 2725
PURPLE VINYL LOGO AS SHOWN

CENTERLINE OF PANEL

Typical Section

Face Elevation—Sign Band Logos

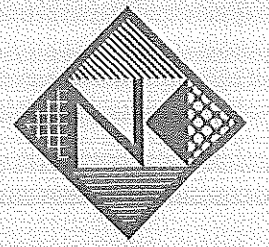
Scale: 3/4"=1'-0" (3) required



GSP WHITE [220-10]

Copy Layout—2nd Surface Vinyl Graphics for door windows

Scale: 3"=1'-0" (2) sets



Neokraft

Neokraft Signs Inc.
686 Main Street
Lewiston, Maine 04240
Telephone: 207.782.9654
Facsimile: 207.782.0009
1.800.339.2258
<http://www.neokraft.com>

Custom Sign Fabrication

Except for designs supplied by the client, all ideas, plans or arrangements indicated on this drawing are copyrighted and owned by Neokraft Signs Inc. and shall not be reproduced, used by or disclosed to any person, firm or corporation without written permission of Neokraft Signs Inc.

Oxford Networks
RL11313

Location: 511 Congress St.

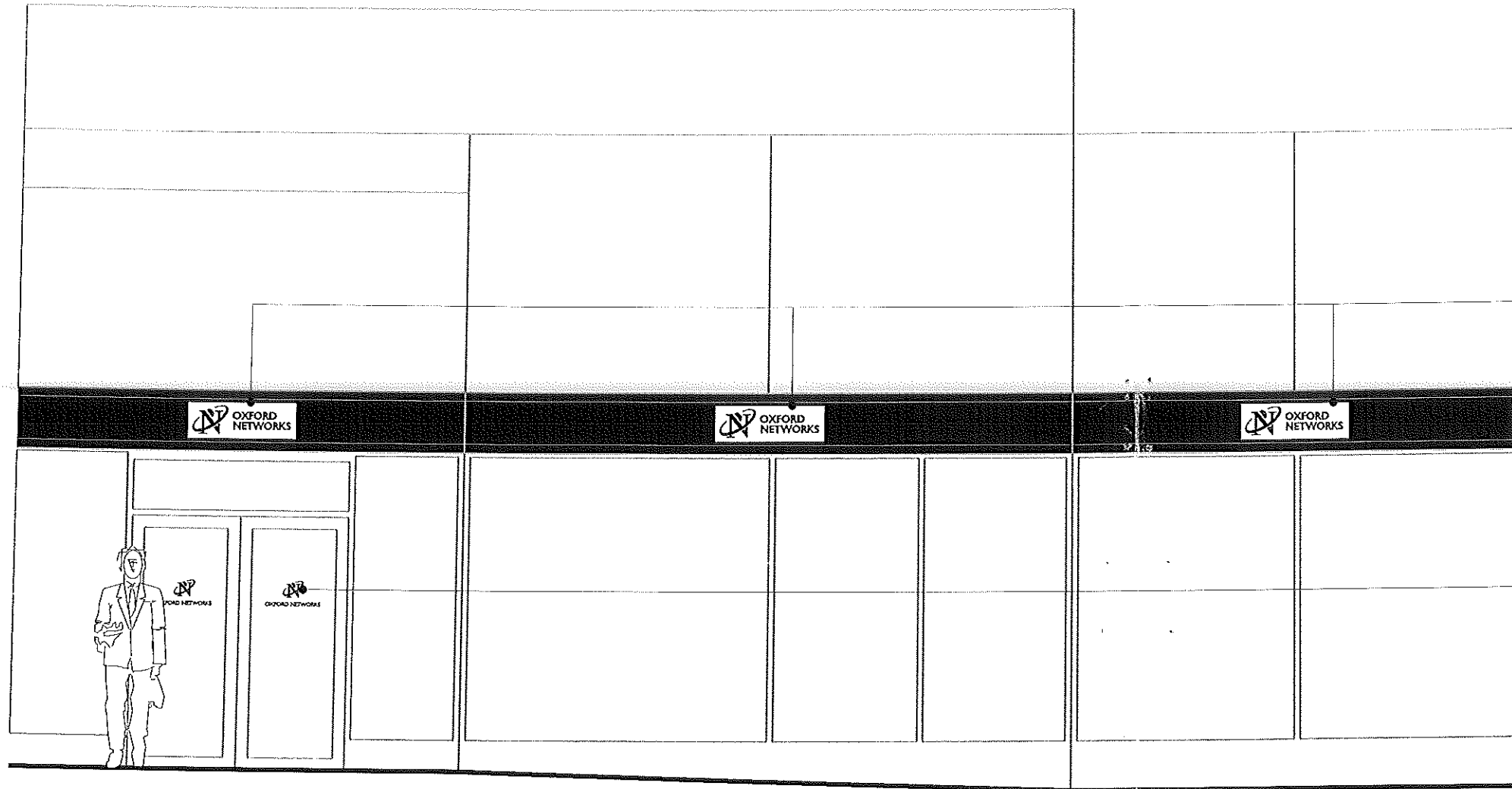
Portland, ME

Drawing No.: 2 of 2

Drawn by: JF

Date: 06.07.2002

Gen Ref:



Flat View—Partial Building Elevation

Scale: 1/4" = 1'-0"

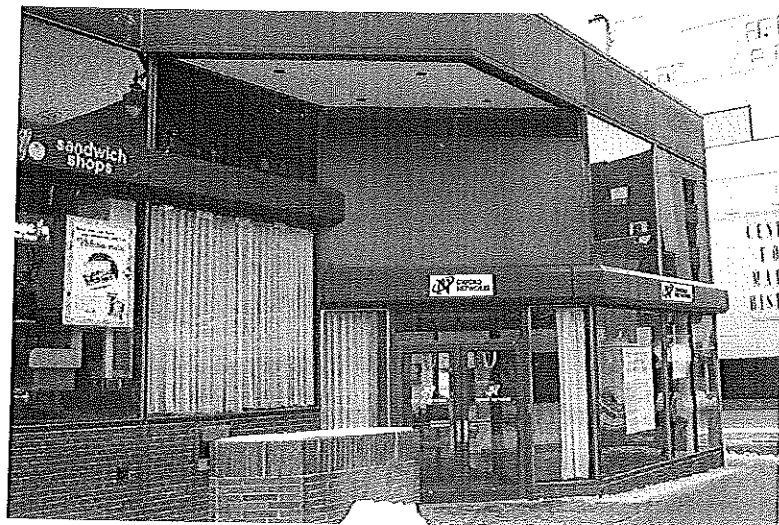
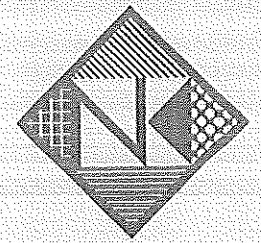


Photo Composite

No Scale



Neokraft

(3) NEW SIGN BAND LOGOS

(2) NEW VINYL LOGOS

Neokraft Signs Inc.
686 Main Street
Lewiston, Maine 04240
Telephone: 207.782.9654
Facsimile: 207.782.0009
1.800.339.2258
<http://www.neokraft.com>

Custom Sign Fabrication

Except for designs supplied by the client, all ideas, plans or arrangements indicated on this drawing are copyrighted and owned by Neokraft Signs Inc. and shall not be reproduced, used by or disclosed to any person, firm or corporation without written permission of Neokraft Signs Inc.

Oxford Networks

RL11313

Location: 511 Congress St.

Portland, ME

Drawing No.: 1 of 2

Drawn by: JF

Date: 06.07.2002

Gen Ref.: