

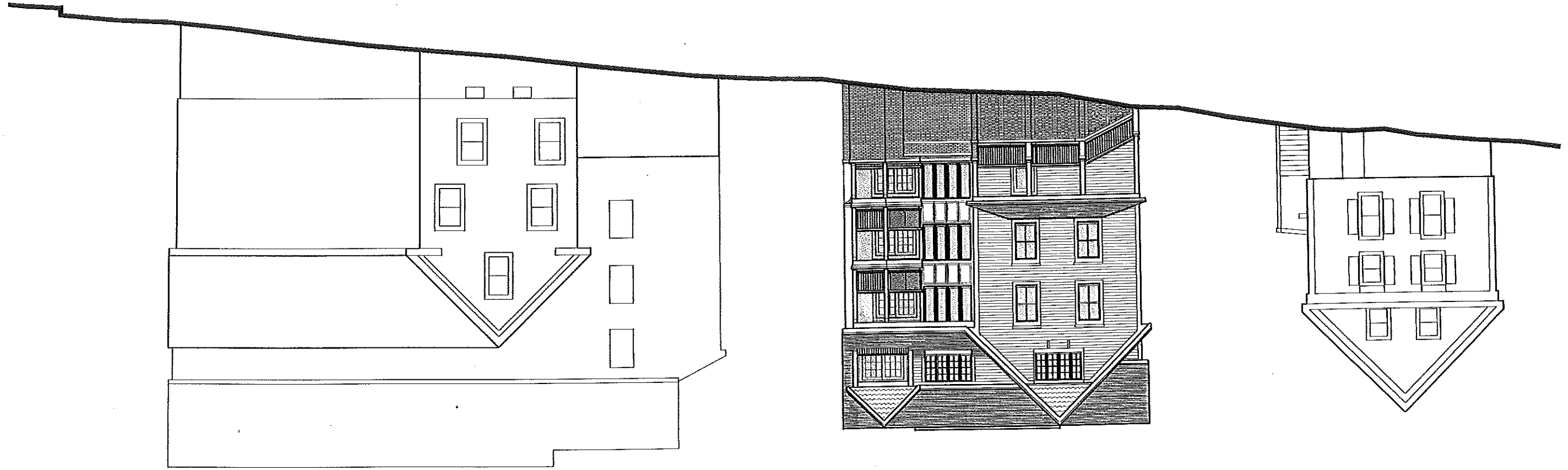
TFH ARCHITECTS
100 COMMERCIAL STREET
PORTLAND MAINE 04101
TELEPHONE 207 775 6141
ARCHITECTURE PLANNING

Portland, Maine

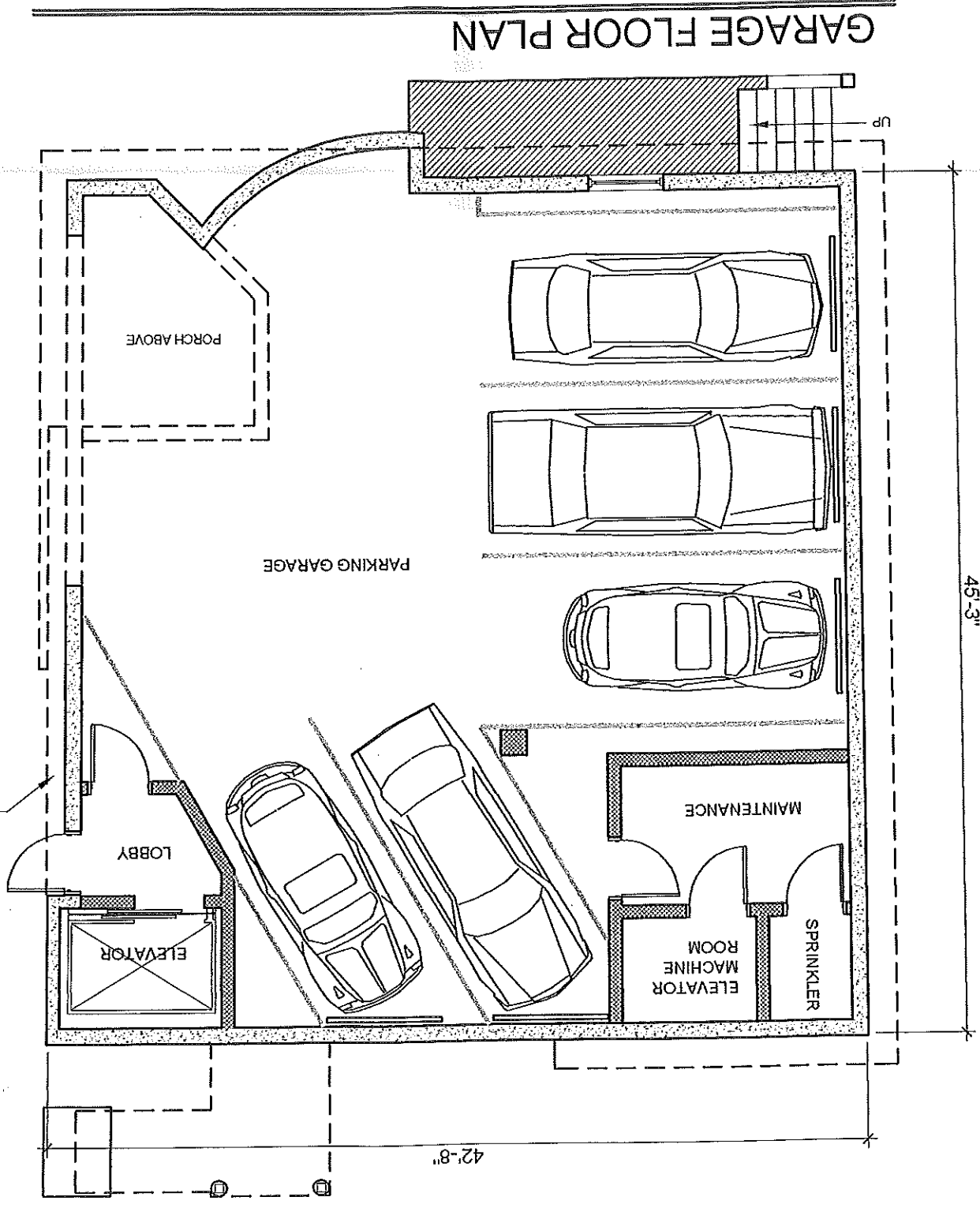
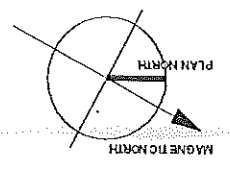
CASCO BAY VENTURES

Casco Bay Condominium Building "C"

WATERVILLE STREETSCAPE



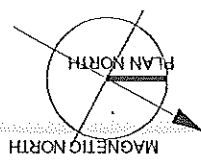
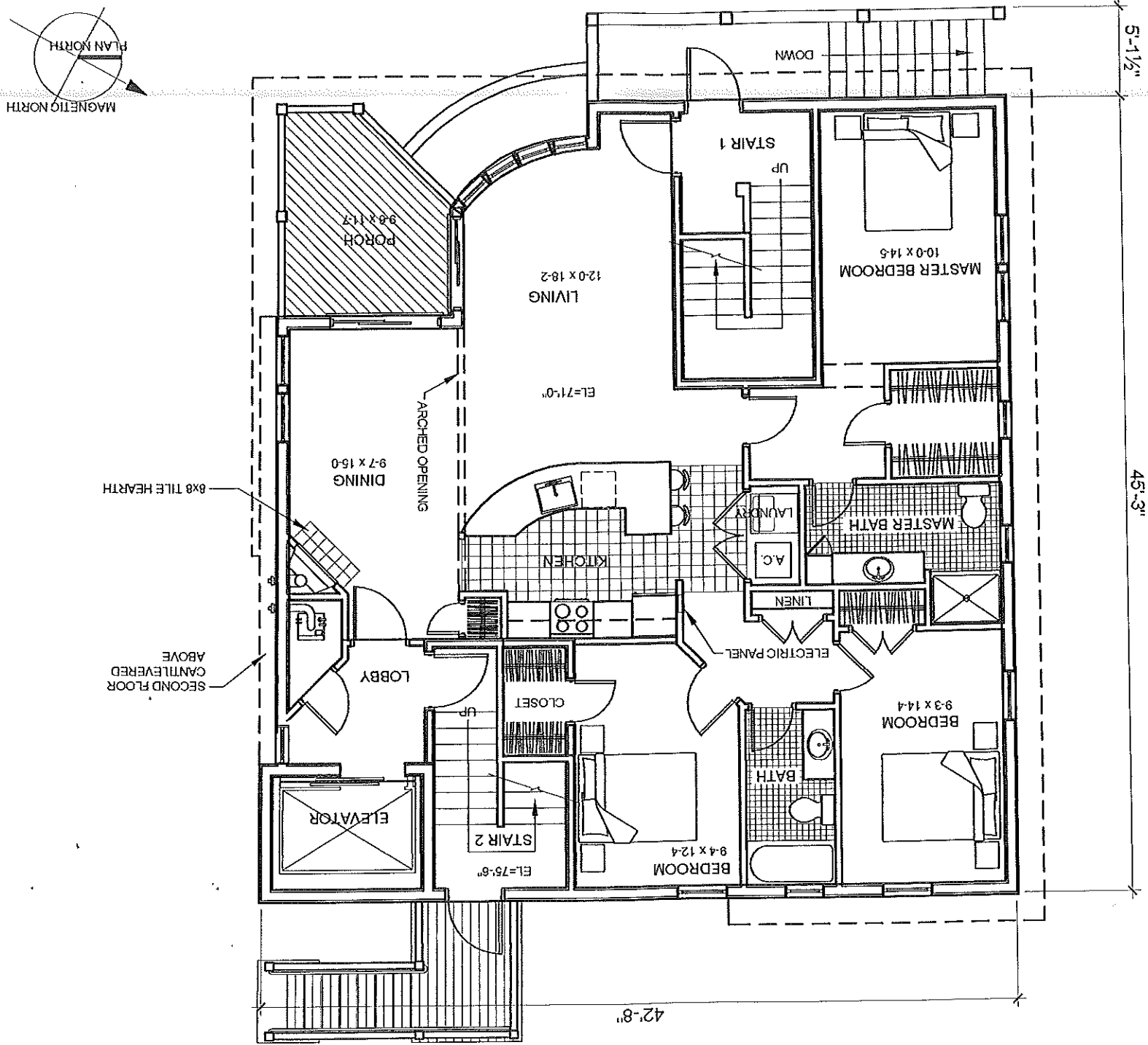
Casco Bay Condominium Building "C"





Casco Bay Condominium Building "C"

FIRST FLOOR PLAN



6x8 TILE HEARTH
ARCHED OPENING
ARCHED OPENING
LOBBY
ELEVATOR
SECOND FLOOR
CANTILEVERED
ABOVE

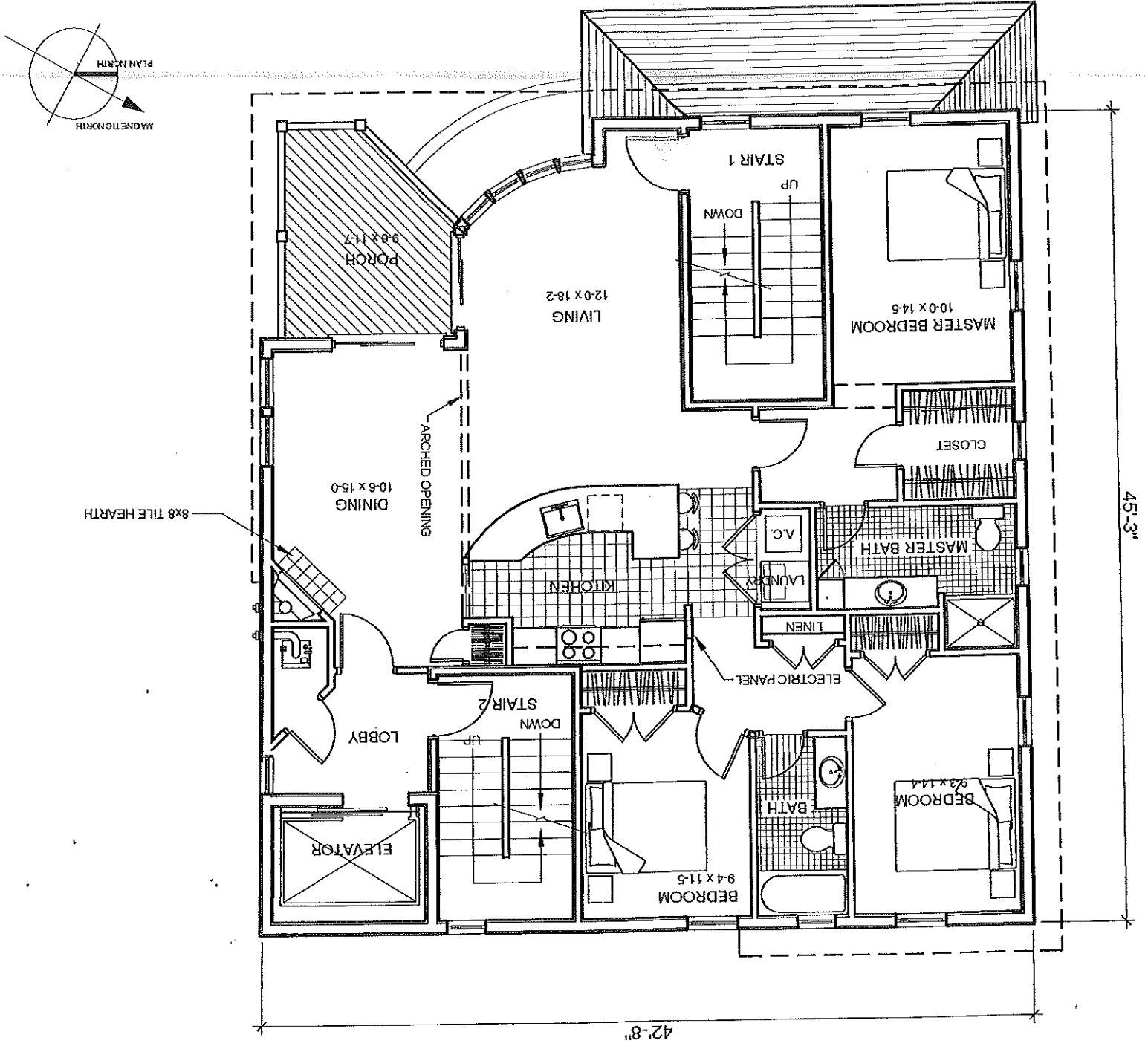
42'-8"

45'-3"

5'-1 1/2"



SECOND & THIRD FLOOR PLANS



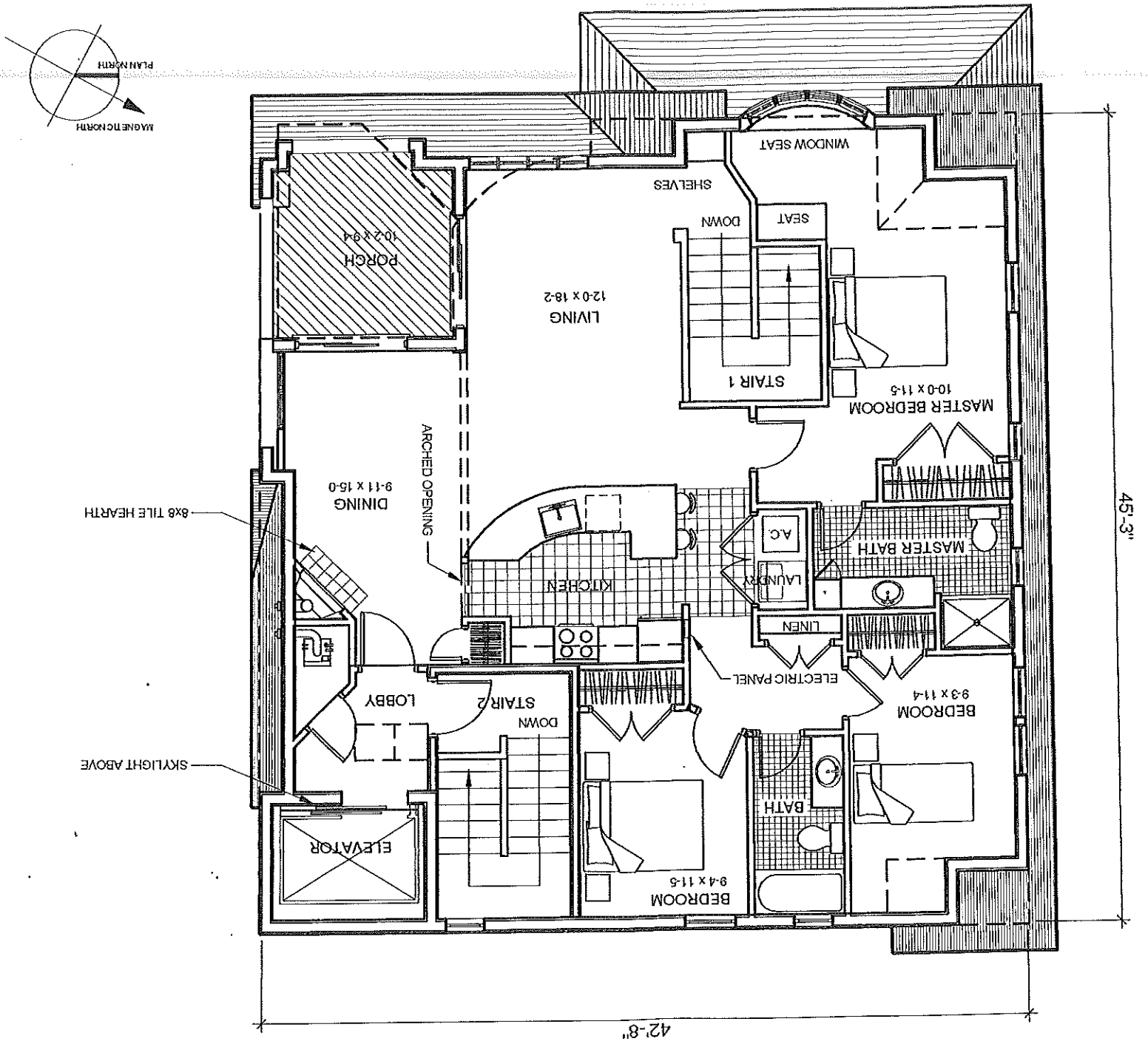
TFH ARCHITECTS
100 COMMERCIAL STREET
PORTLAND MAINE 04101
TELEPHONE 207 776 6141
ARCHITECTURE PLANNING



CASCO BAY VENTURES
Portland, Maine

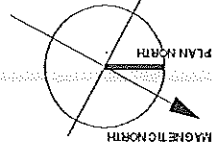
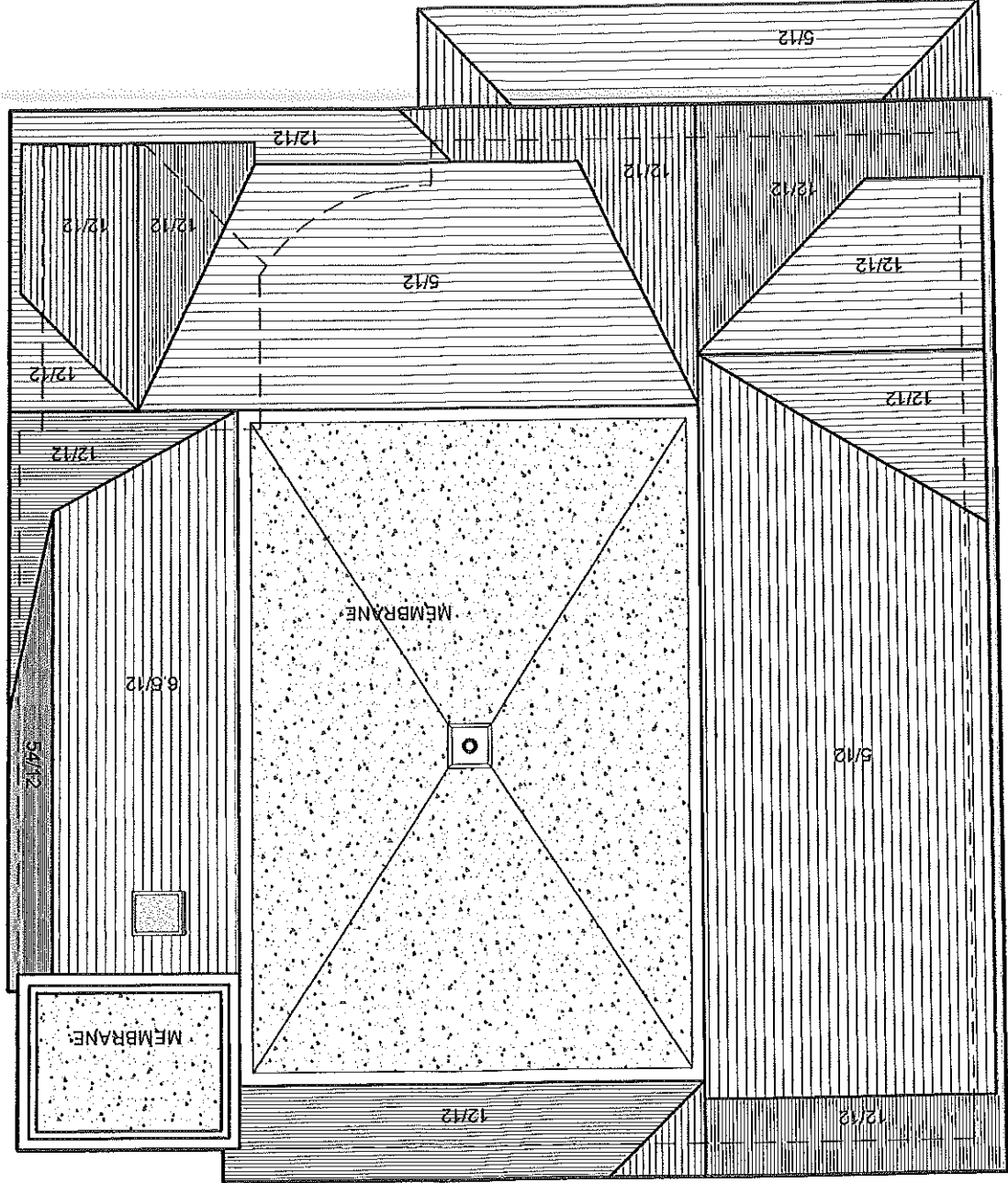
Casco Bay Condominium Building "C"

FOURTH FLOOR PLAN



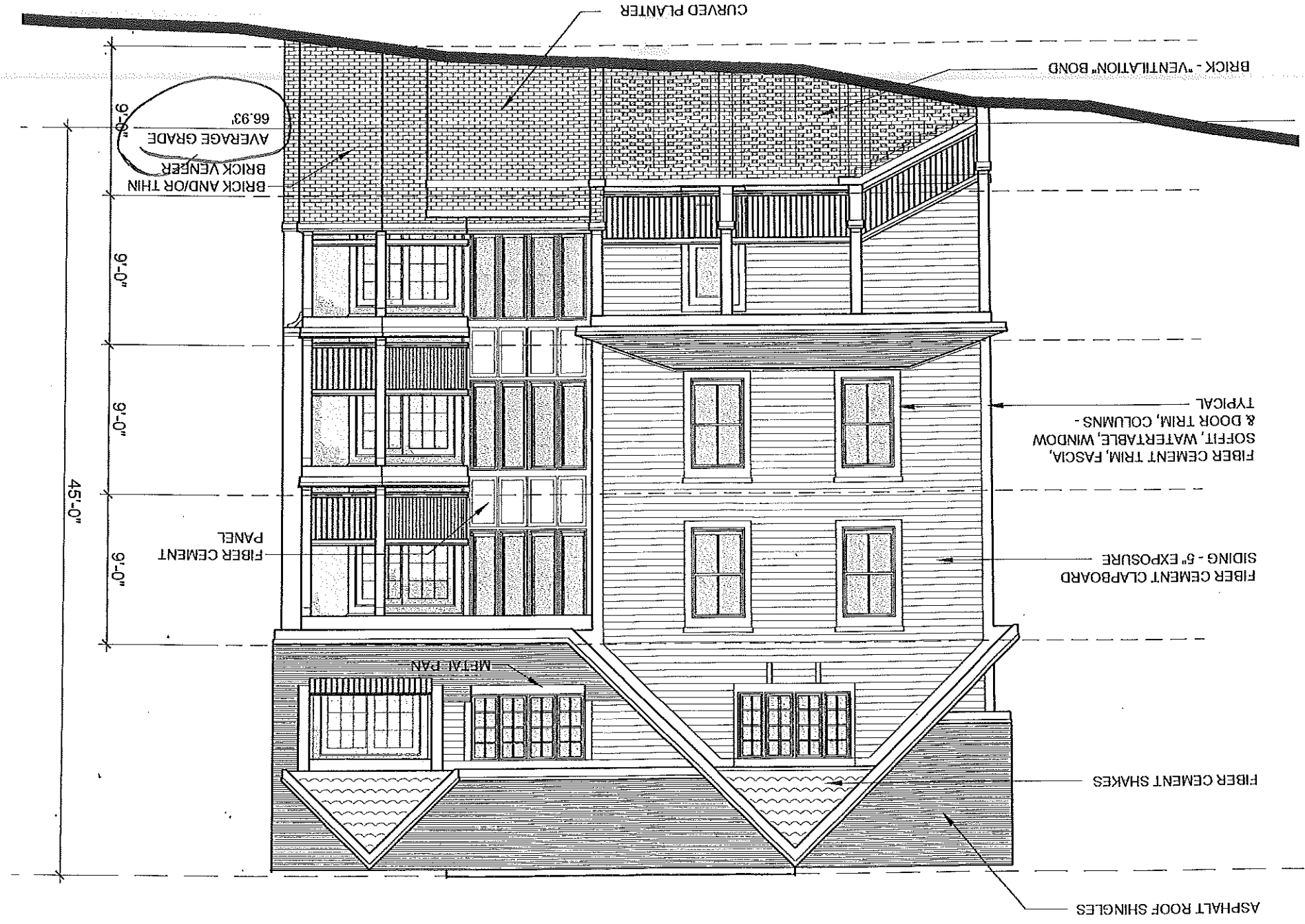
MARCH 14, 2003
SCALE: 1/8" = 1'-0"
A-4

ROOF PLAN



Casco Bay Condominium Building "C"

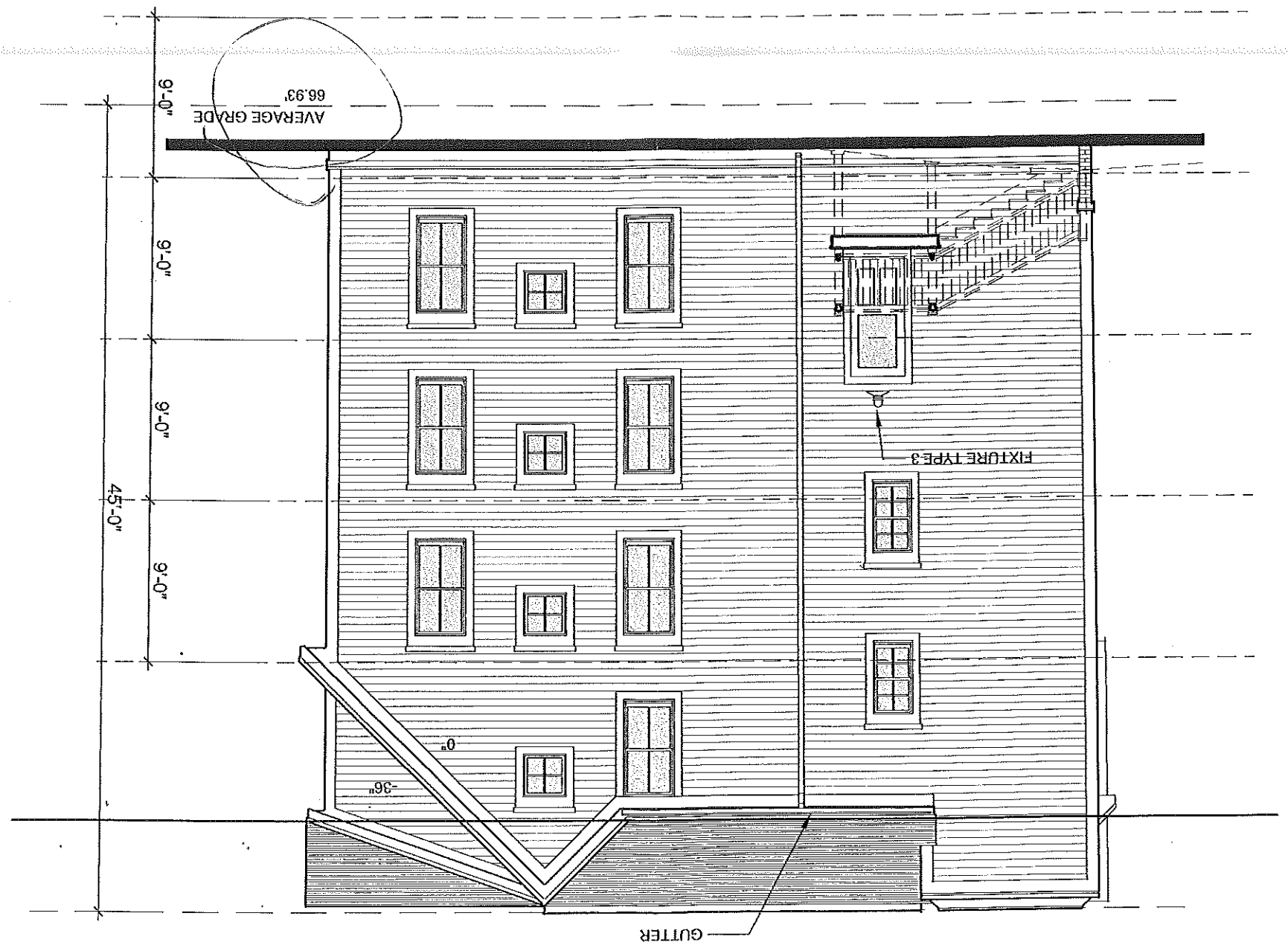
WEST (WATERVILLE STREET) ELEVATION





Casco Bay Condominium Building "C"

EAST (BACK) ELEVATION

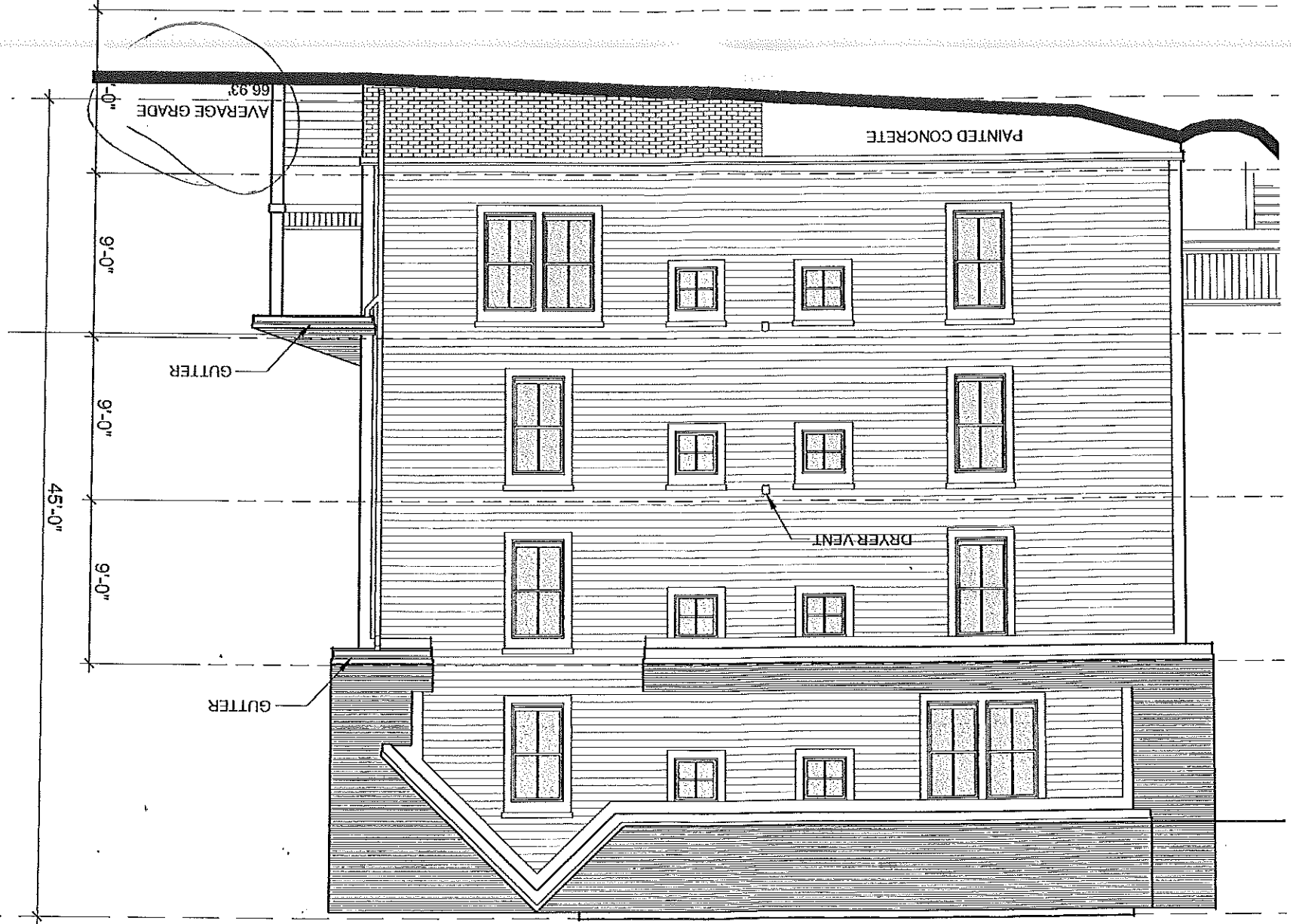


MARCH 14, 2003
A-9
SCALE: 1/8" = 1'-0"

CASCO BAY CONDOMINIUM BUILDING "C"
CASCO BAY VENTURES
Portland, Maine

TFH ARCHITECTS
100 COMMERCIAL STREET
PORTLAND MAINE 04101
TELEPHONE 207 775 6141
ARCHITECTURE PLAN NO.

NORTH (LEFT SIDE) ELEVATION



SCALE: 1/8" = 1'-0"
A-10
MARCH 14, 2003

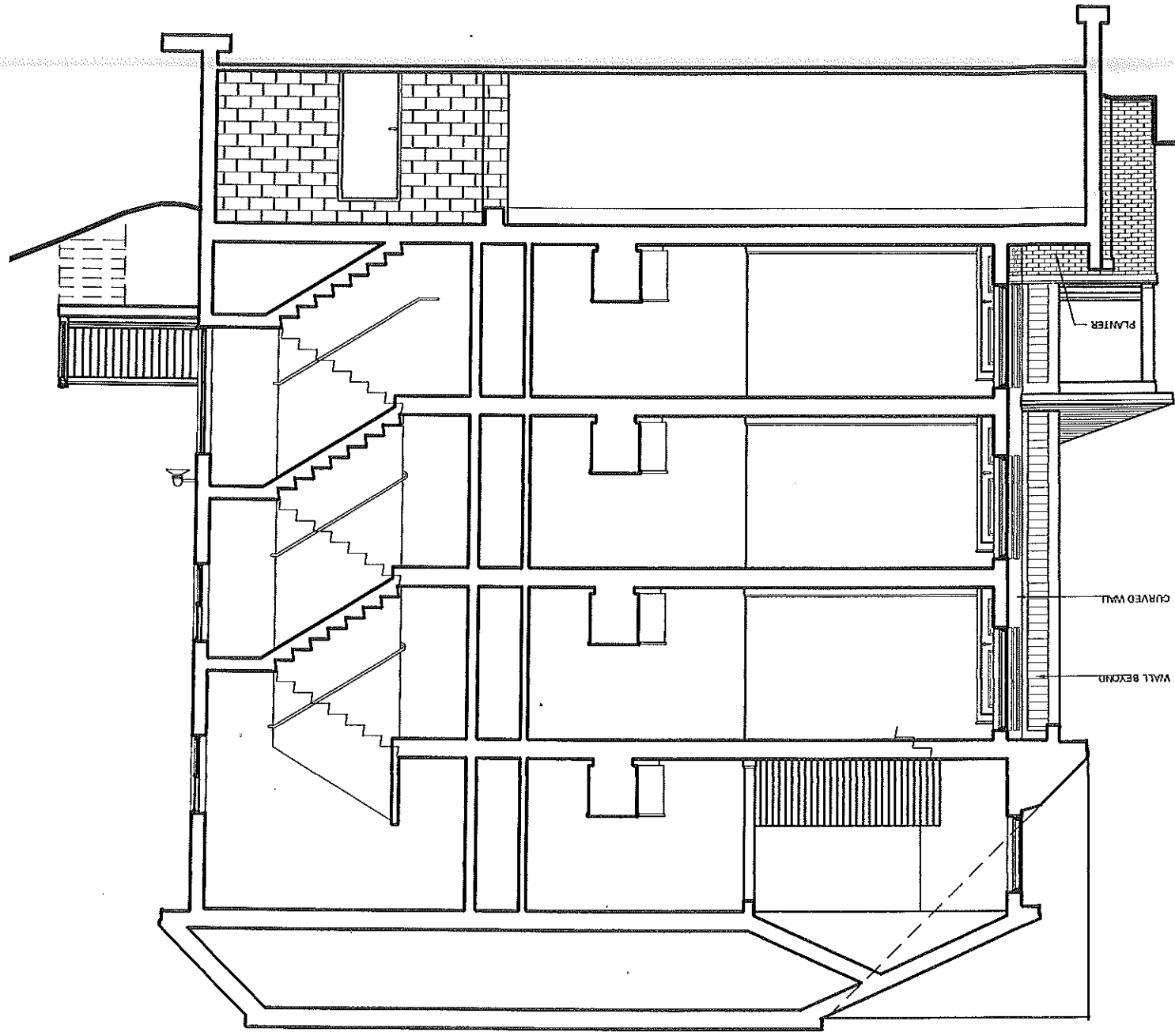
CASCO BAY VENTURES
Portland, Maine

Casco Bay Condominium Building "C"

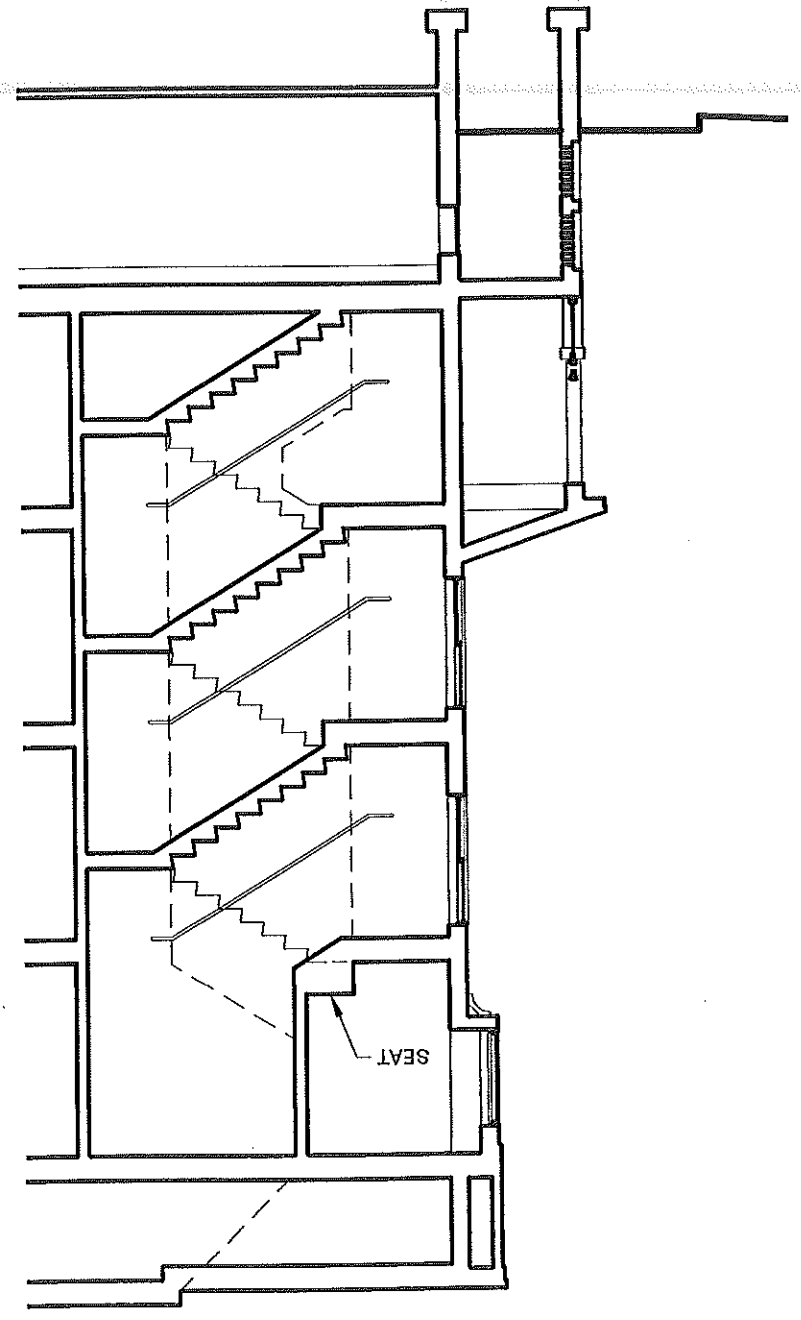
T.F.H. ARCHITECTS
100 COMMERCIAL STREET
PORTLAND MAINE 04101
TELEPHONE 207 775 6141
ARCHITECTURE PLANNING



LIVING AREA/KITCHEN/BACK STAIR



FRONT STAIR



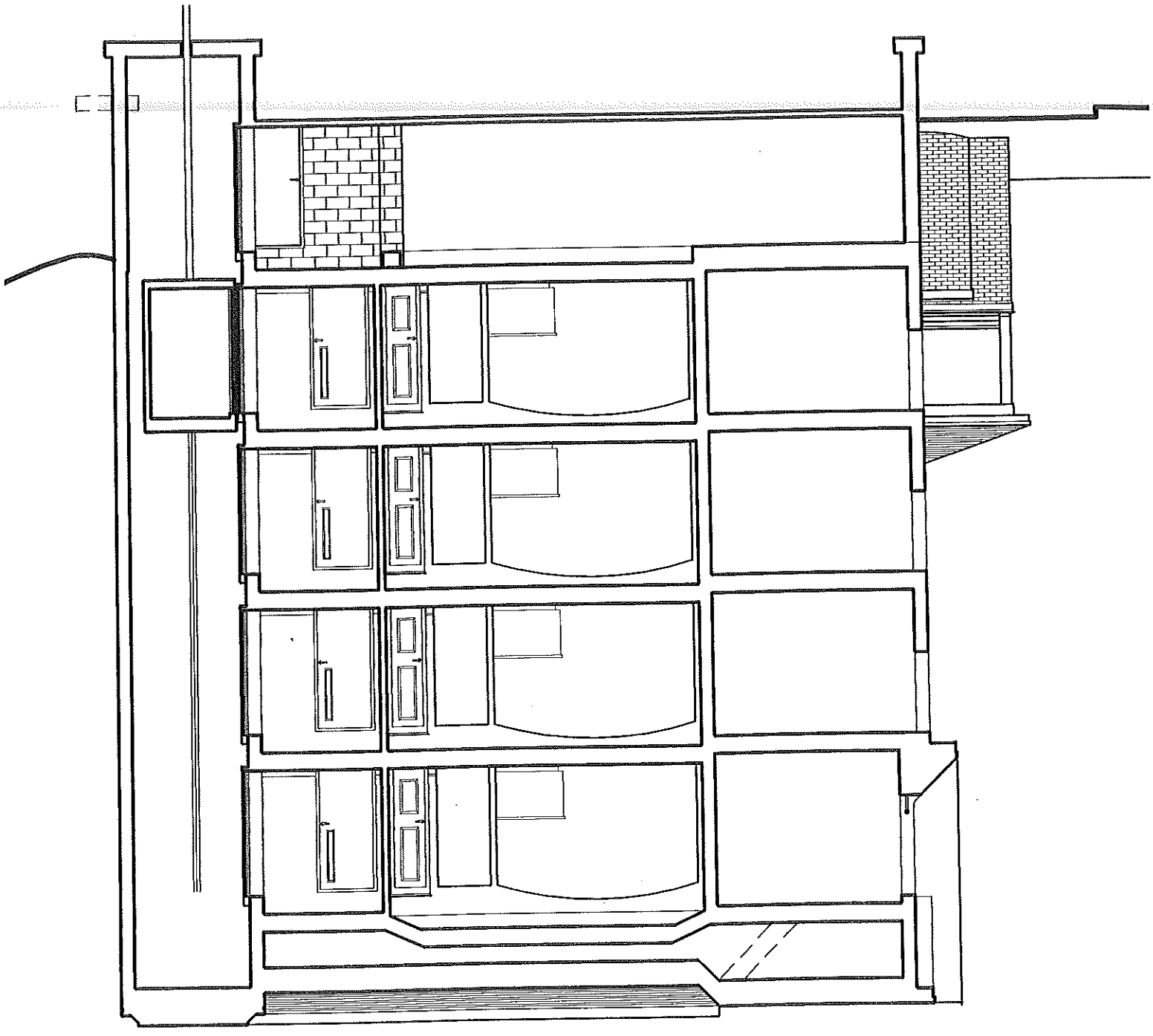
T.F.H. ARCHITECTS
100 COMMERCIAL STREET
PORTLAND MAINE 04101
TELEPHONE 207 776 8141
ARCHITECTURE PLANING

CASCO BAY VENTURES
Portland, Maine

Casco Bay Condominium Building "C"

SCALE: 1/8" = 1'-0"
A-11
MARCH 14, 2003

LIVING AREA/KITCHEN/BACK STAIR



LIVING AREA/KITCHEN/BACK STAIR

