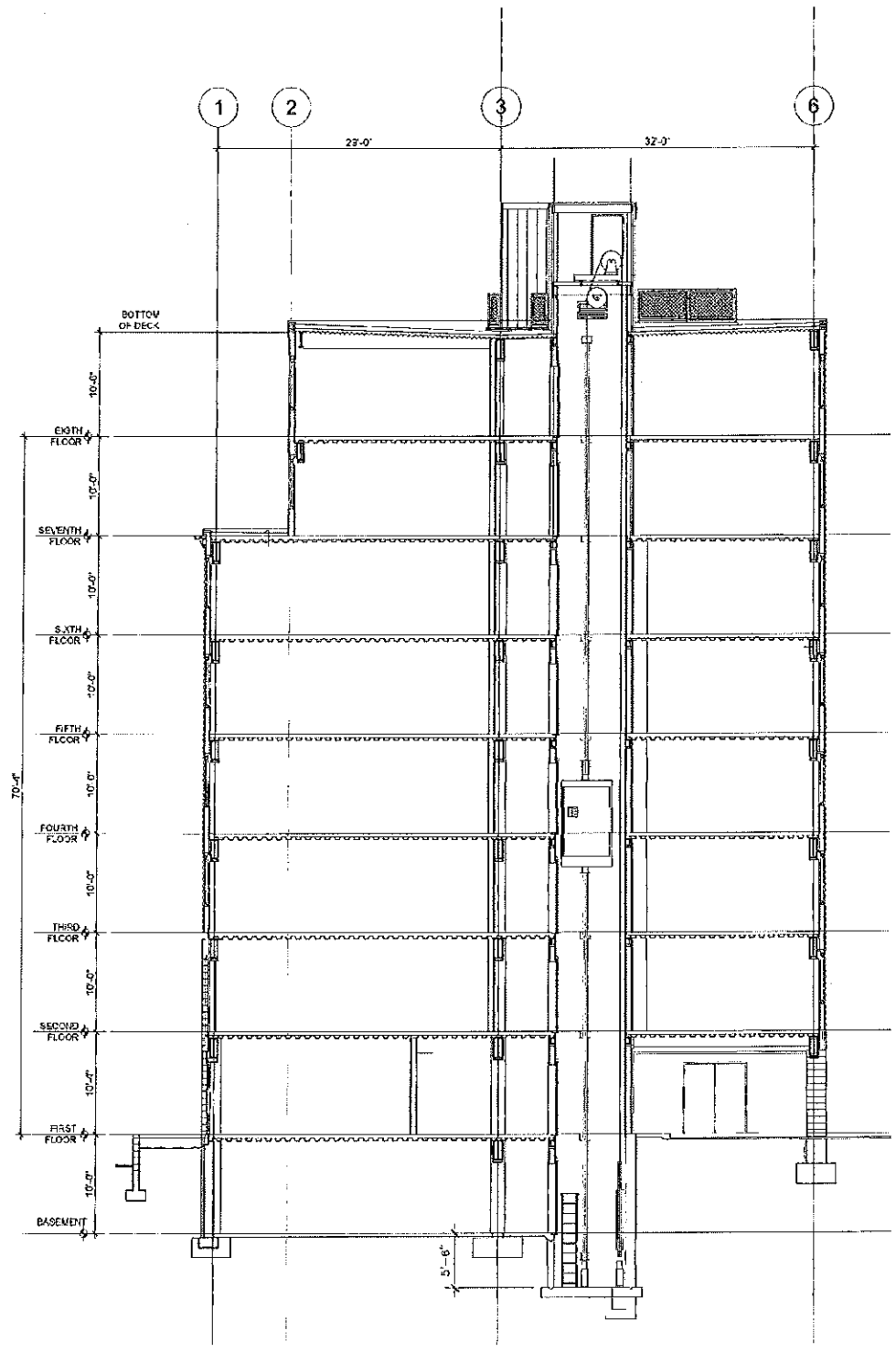
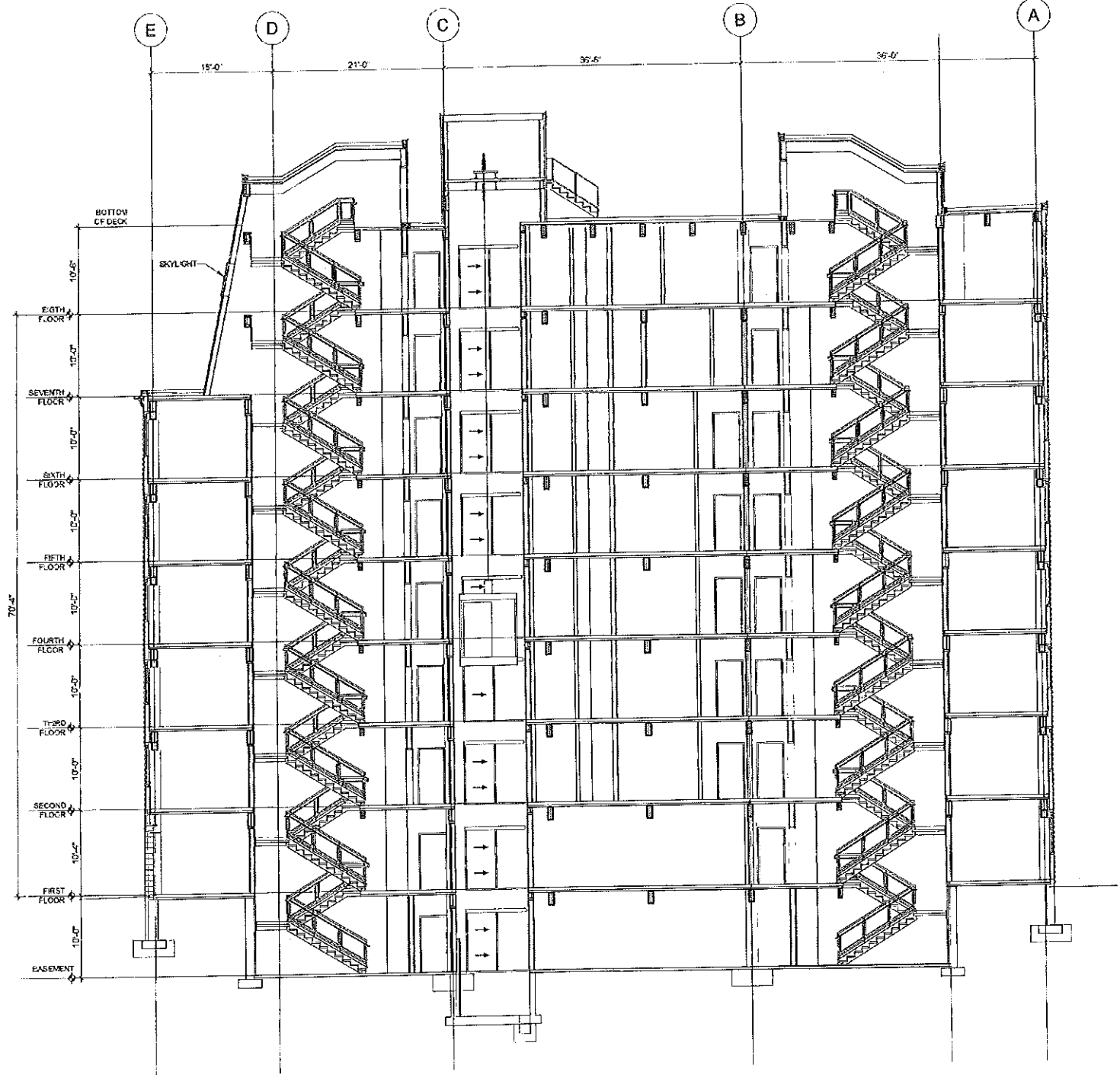


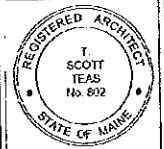
T:\00_TFH Projects\0422_Chestnut St\0422_Chestnut St\0422_Chestnut St.dwg, 2/2/2006, 10:27:10 AM, HP/0422/06/10/0422.dwg



1 BUILDING CROSS SECTION
1/8" = 1'-0"



2 BUILDING LONGITUDINAL SECTION
1/8" = 1'-0"



© 2005 TFH ARCHITECTS

CHESTNUT STREET LOFTS
URBAN REVITALIZATION PROJECT
BY CHESTNUT STREET LLC,
PORTLAND, MAINE

TFH ARCHITECTS
100 COMMERCIAL STREET
PORTLAND MAINE 04101
TELEPHONE 207 776 6141
ARCHITECTURE PLANNING

- CONSULTANTS**
- EDMUNDSON**
Land Use Consultants
501 Franklin Street
Portland, ME 04103
207 475-5500
 - STRICKLAND**
Structural Design Consulting
22 Commercial Drive
Chestnut Street, 4th Floor
04101
207 776-4100
 - MEDONAKIS**
Energy Engineering
13 DuPont Street
Portland, ME 04101
207 475-7100
 - GLADSON**
Mechanical Engineering
7 Forest East
14000 NE 12th Ave
04101
207 615-8000

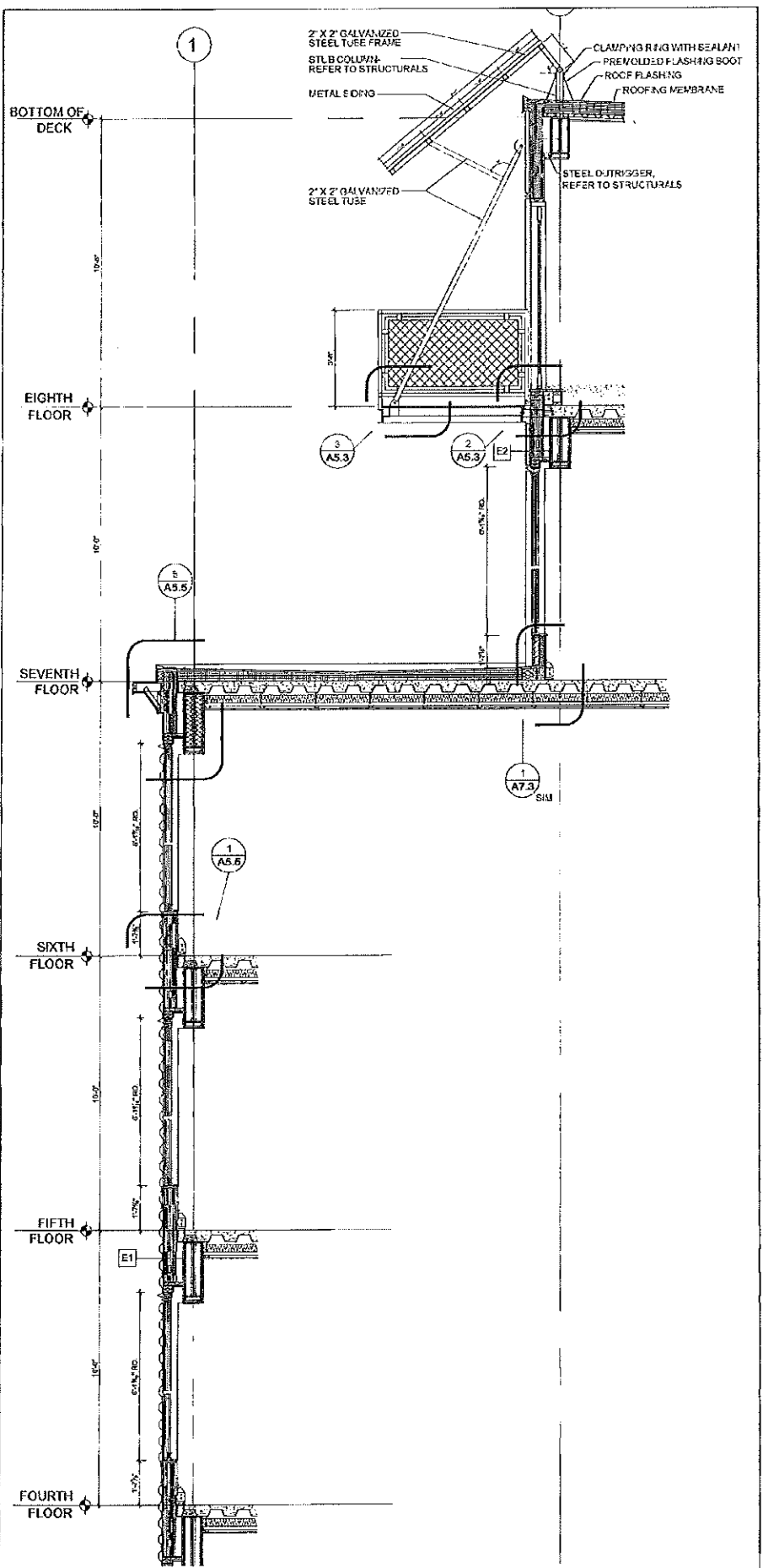
REVISIONS:
2 100% CONSTRUCTION DOCUMENTS
2/2/06

DATE:
PROJECT No. 0422
DRAWN BY: RJS
CHECKED BY: TST
SCALE: AS NOTED

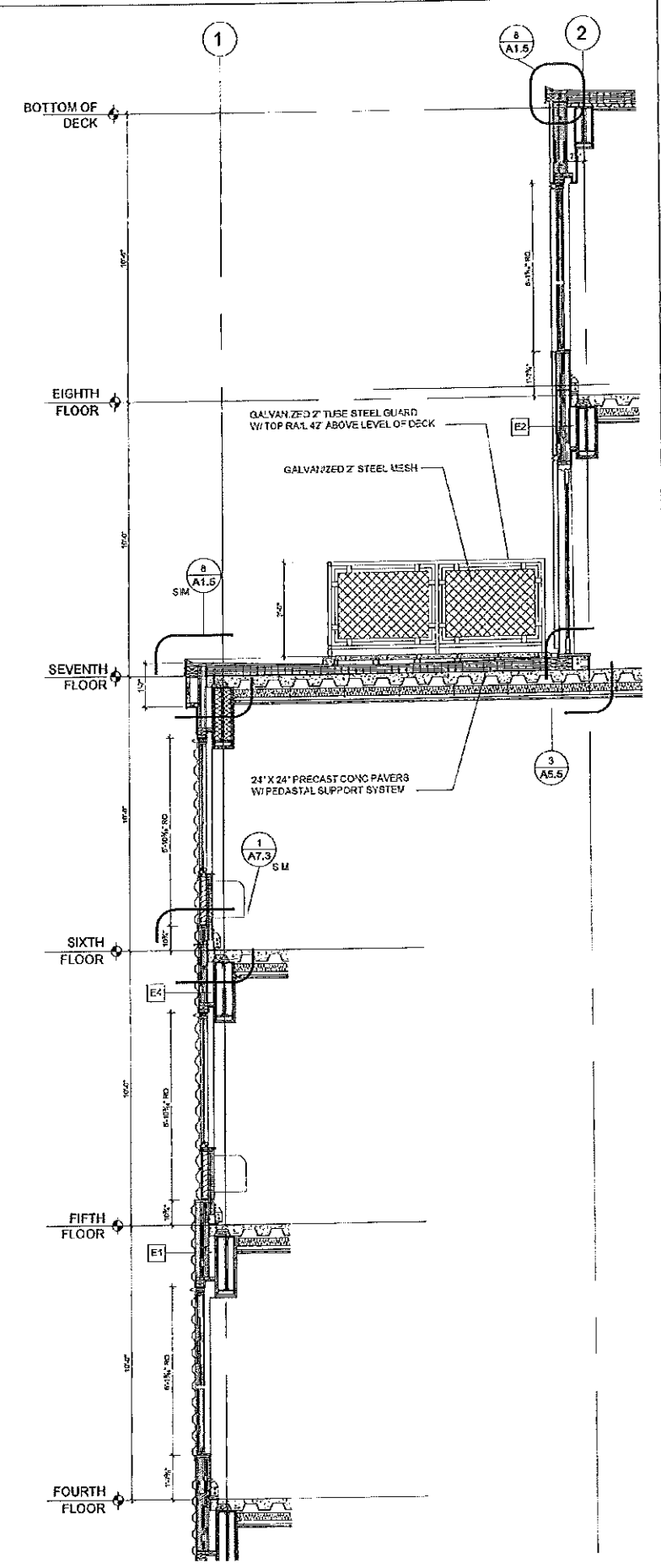
SHEET TITLE:
BUILDING SECTIONS

A3.0

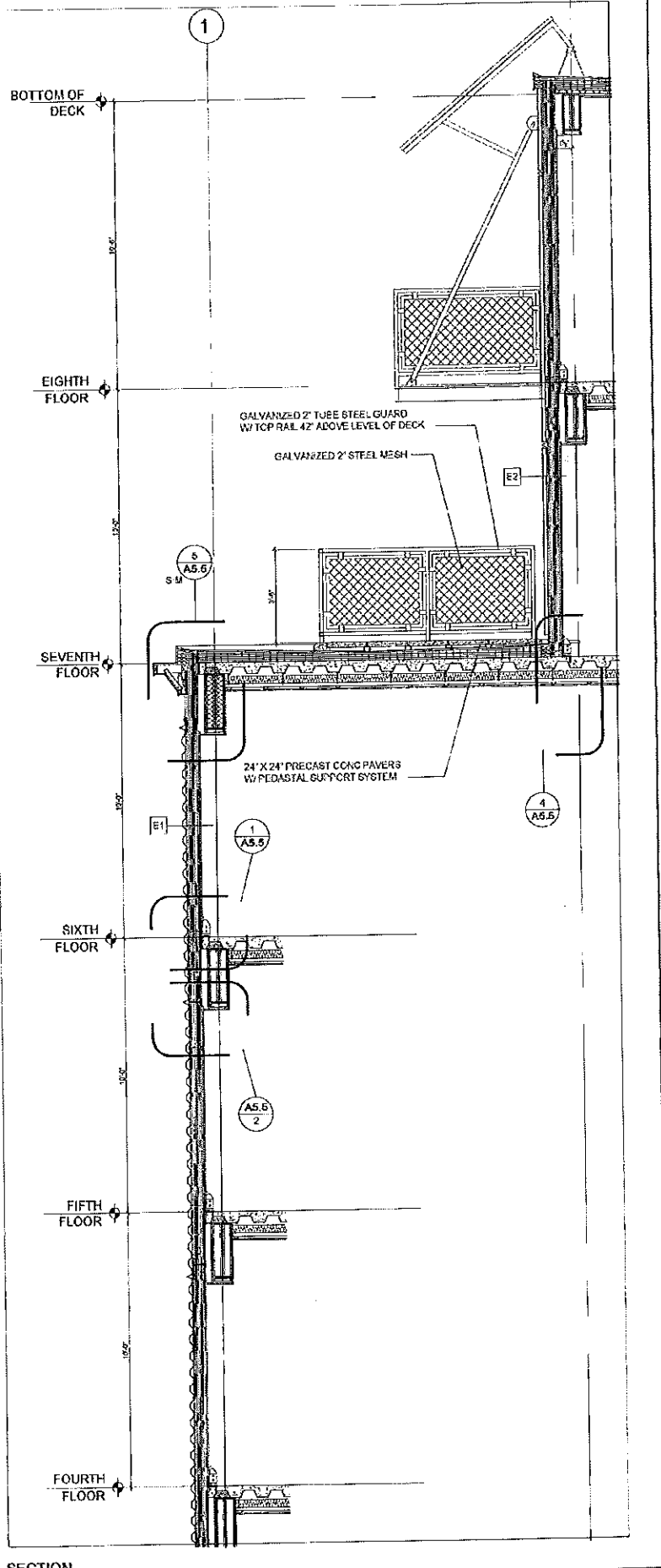
T:\03_TFH\Projects\02_Chestnut Street Lofts\Drawings\02\03\A3.1\A3.1.dwg, 1/21/06 9:54:25 AM, 1/21/06 9:54:25 AM, 1/21/06 9:54:25 AM, 1/21/06 9:54:25 AM



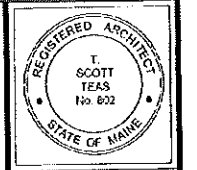
3 WALL SECTION
A3.1 3/8" = 1'-0"



2 WALL SECTION
A3.1 3/8" = 1'-0"



1 WALL SECTION
A3.1 3/8" = 1'-0"



© 2005 TFH ARCHITECTS

CHESTNUT STREET LOFTS

URBAN REVITALIZATION PROJECT
BY CHESTNUT STREET LLC.
PORTLAND, MAINE

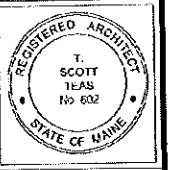
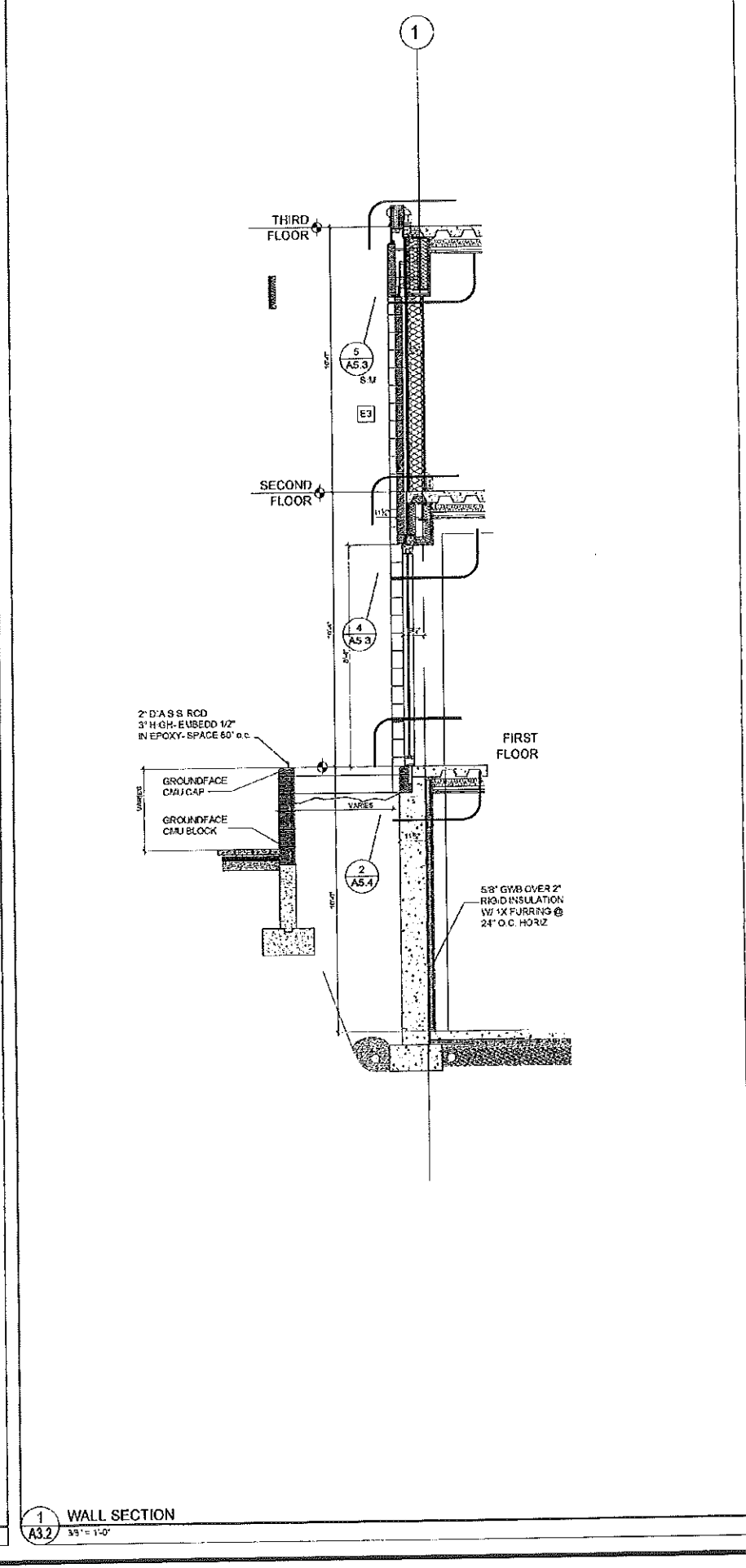
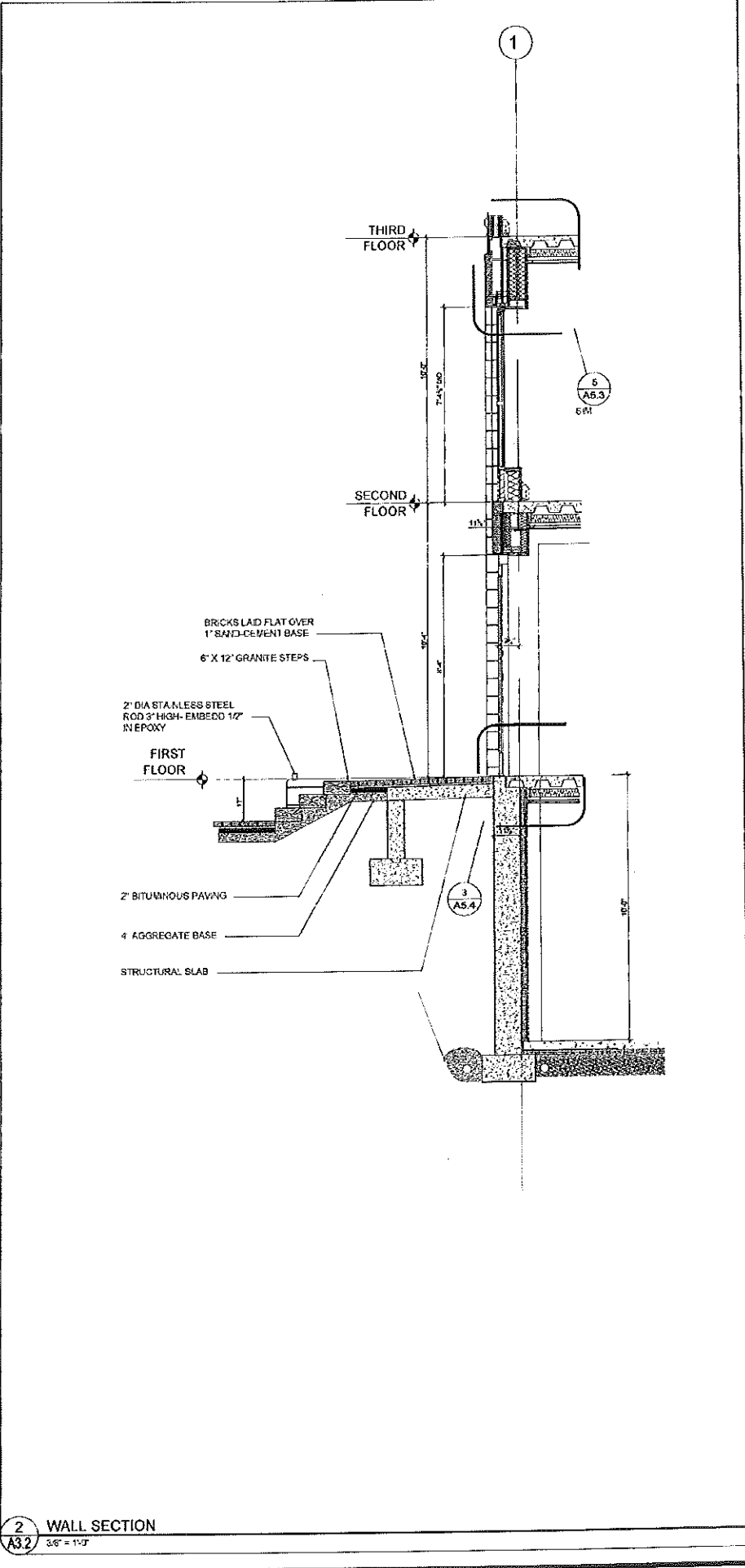
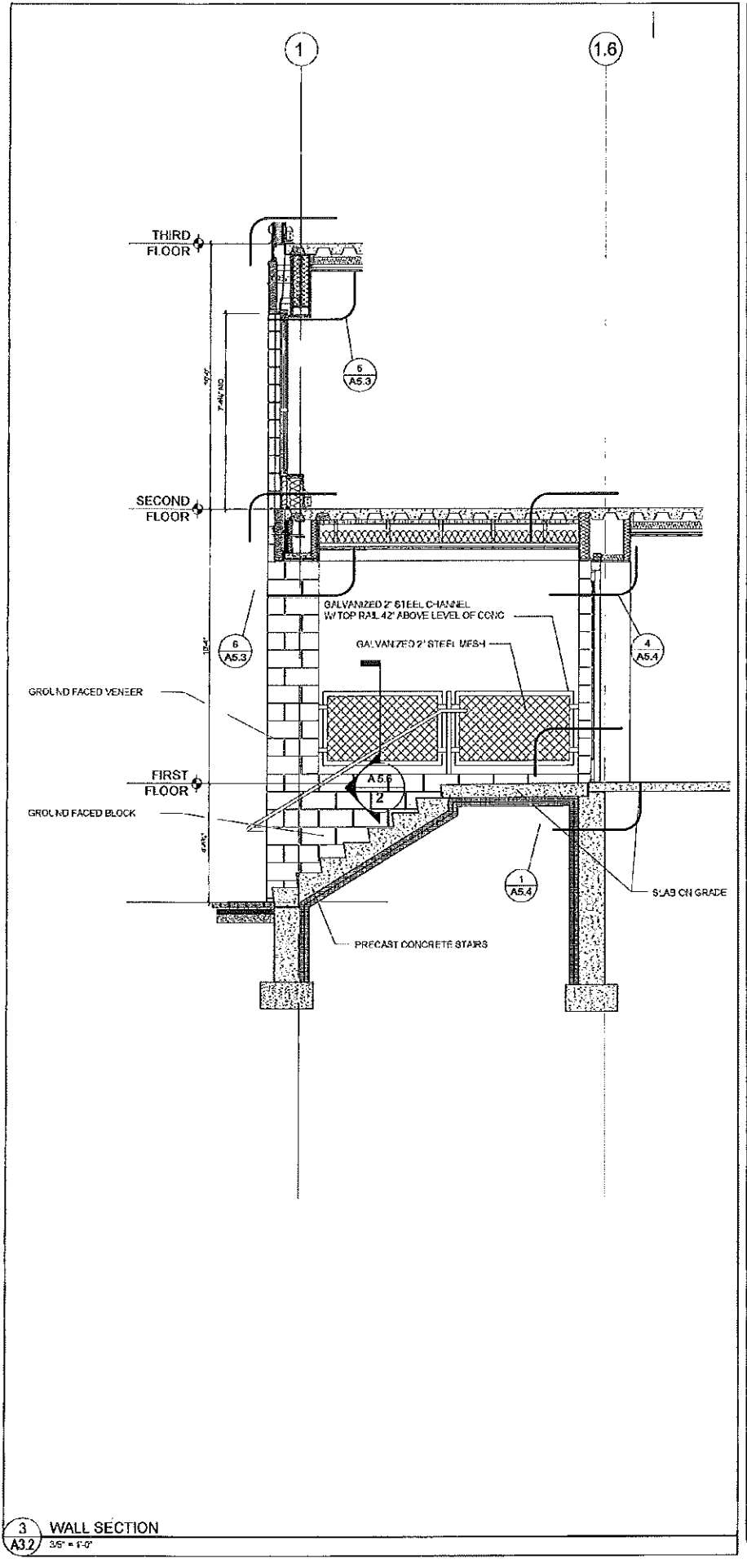
TFH ARCHITECTS
100 COMMERCIAL STREET
PORTLAND MAINE 04101
TELEPHONE 207 776 6141
ARCHITECTURE PLANNING

CONSULTANTS:
MECH.
Lutz Ullmer Consultants
164 Beach St
Portland ME 04115
207-753-5131
STRUCTURAL
Structural Design Consulting
22 Oakwood Drive
Old Orchard Beach, ME 04054
207-854-4018
METALS
Metals Engineering
1 Leacock Street
Portland ME 04101
207-875-7165
ELECTRICAL
Electrical Engineers/PA
10 Burnside Road
Portland ME 04102
207-866-6655

REVIS	CHS.
1	2% CONTRACT ADMINISTRATION
DATE	12.7.06
PROJECT No.	C422
DRAWN BY	WFA
CHECKED BY	TST
SCALE:	AS NOTED
SHEET TITLE:	
WALL SECTIONS	

A3.1

T:\03_TFH\Projects\02_Chestnut Street\Drawings\Architectural\Drawings\0323\0323_01.dwg, 12/11/04, 1:27:17 PM, HP Design/Plot TBC, 1/10 Color/BC



© 2005 TFH ARCHITECTS

CHESTNUT STREET LOFTS
 URBAN REVITALIZATION PROJECT
 BY CHESTNUT STREET LLC.
 PORTLAND, MAINE

TFH ARCHITECTS
 100 COMMERCIAL STREET
 PORTLAND MAINE 04101
 TELEPHONE 207 775 6141
 ARCHITECTURE PLANNING

CONSULTANTS

CMU:
 Land Use Consultants
 555 Riverside Road
 Portland ME 04101
 207-792-5253

STRUCTURAL:
 Structural Design Consultants
 71 Commercial Drive
 Old Orchard Beach, ME 04074
 207-634-6638

MEDICAL:
 Medical Engineering
 10 Duane Street
 Portland, ME 04101
 207-774-7140

ELECTRICAL:
 Electrical Engineering
 3 Hancock Road
 Portland, ME 04101
 207-535-1475

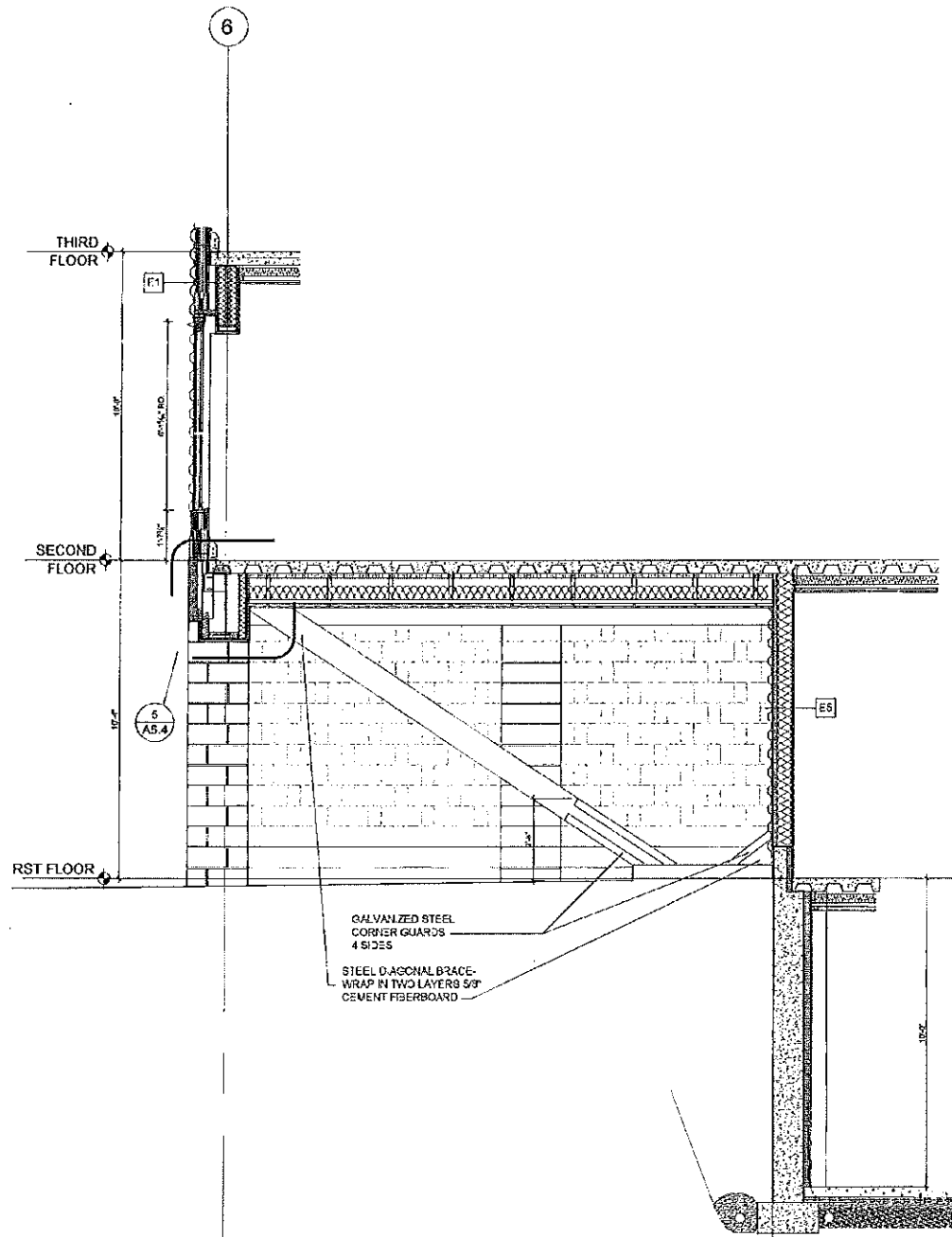
REVISIONS:

1. 100% COMPLETE (TFH DOCUMENTS) 12.11.05

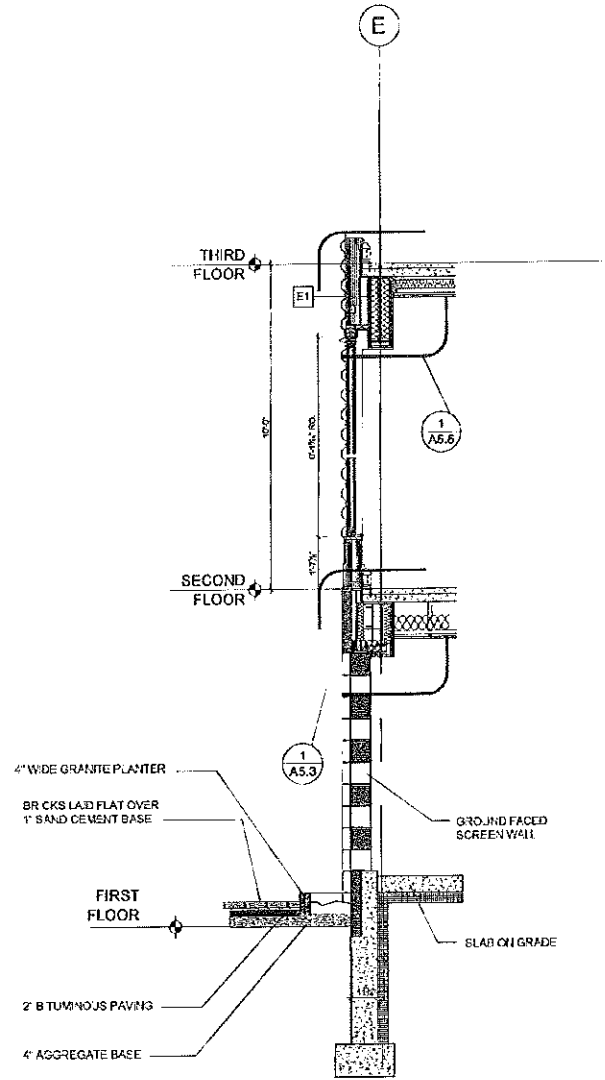
DATE:	12.7.05
PROJECT No:	0422
DRAWN BY:	WFA
CHECKED BY:	TBT
SCALE:	AS NOTED
SHEET TITLE:	WALL SECTIONS

A3.2

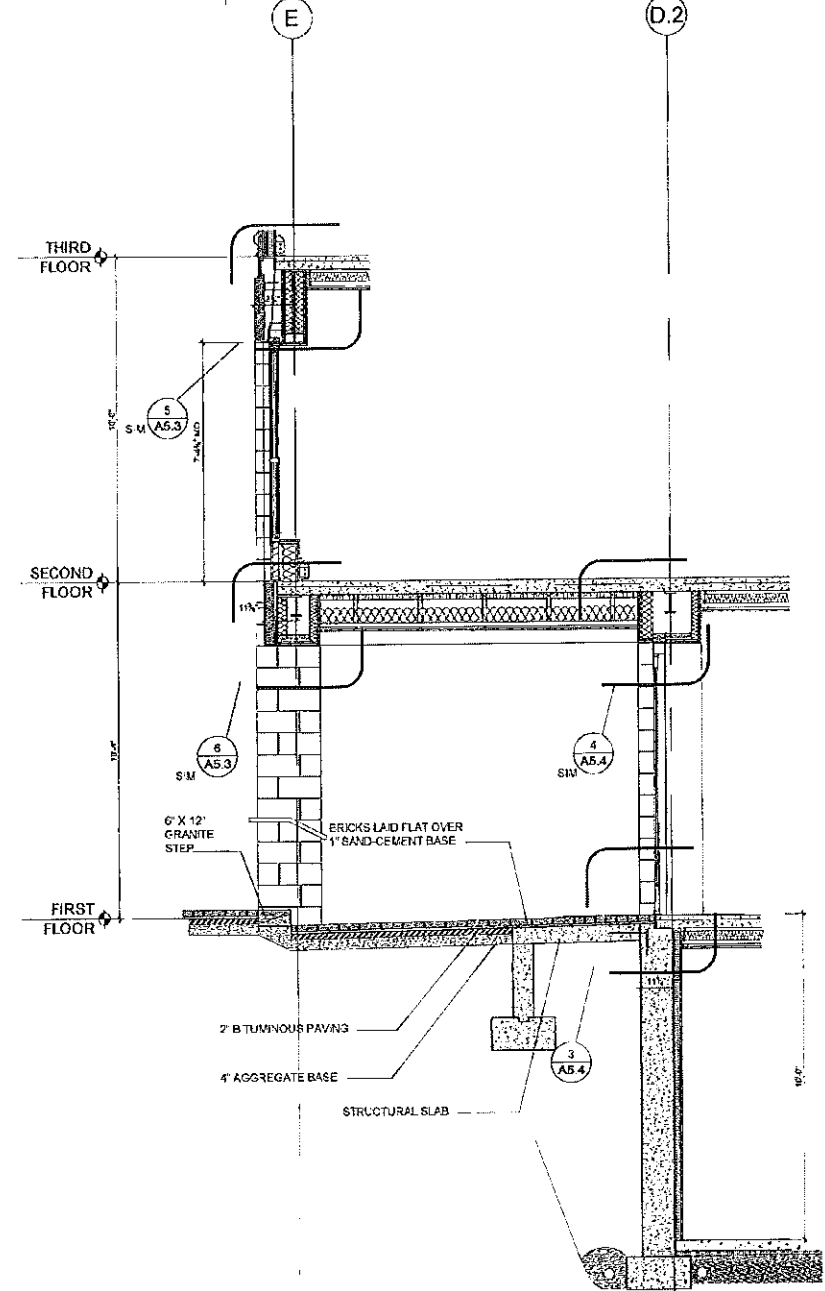
I:\2013\Projects\2013_Chestnut Street\Construction Documents\2013_Chestnut Street\2013_08_19\2013_08_19_01.dwg, HP Design/2013_08_19_01.dwg



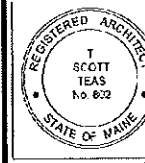
3 WALL SECTION
3/8" = 1'-0"



2 WALL SECTION
3/8" = 1'-0"



1 WALL SECTION
3/8" = 1'-0"



© 2013 T.F.H. ARCHITECTS

CHESTNUT STREET LOFTS
URBAN REVITALIZATION PROJECT
BY CHESTNUT STREET LLC.
PORTLAND, MAINE



T.F.H. ARCHITECTS
100 COMMERCIAL STREET
PORTLAND MAINE 04101
TELEPHONE 207 776 6141
ARCHITECTURE PLANNING

CONSULTANTS:
Civil
LIFE Plus Consultants
555 Riverside Street
Portland, ME 04103
207 875 3110
Structural
Structural Design Consulting
22 Cabot Street
Old Orchard Beach, ME 04064
207 844 0038
Mechanical
Whiting Engineering
1350 Main Street
Portland, ME 04103
207 874 7340
Electrical
Benedict Engineering
78 Market Road
Portland, ME 04103
207 863 1475

REVISIONS

1 100% CONSTRUCTION DOCUMENTS
12/7/13

DATE	12.7.05
PROJECT No	0422
DRAWN BY:	WFA
CHECKED BY:	TST
SCALE:	AS NOTED

SHEET TITLE

WALL SECTIONS

A3.3



© 2013 T.F.H. ARCHITECTS

CHESTNUT STREET LOFTS
URBAN REVITALIZATION PROJECT
BY CHESTNUT STREET LLC.
PORTLAND, MAINE



T.F.H. ARCHITECTS
100 COMMERCIAL STREET
PORTLAND MAINE 04101
TELEPHONE 207 776 6141
ARCHITECTURE PLANNING

CONSULTANTS:
Civil
LIFE Plus Consultants
555 Riverside Street
Portland, ME 04103
207 875 3110
Structural
Structural Design Consulting
22 Cabot Street
Old Orchard Beach, ME 04064
207 844 0038
Mechanical
Whiting Engineering
1350 Main Street
Portland, ME 04103
207 874 7340
Electrical
Benedict Engineering
78 Market Road
Portland, ME 04103
207 863 1475

REVISIONS

1 100% CONSTRUCTION DOCUMENTS
12/7/13

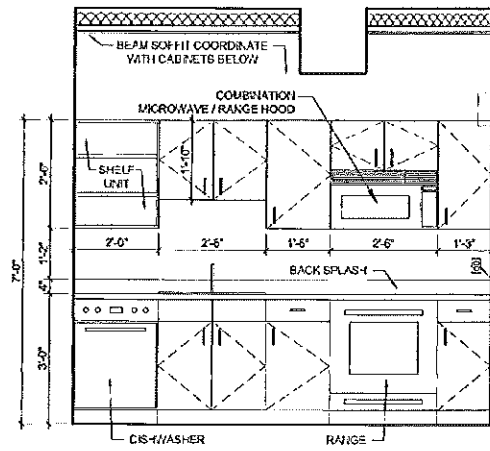
DATE	12.7.05
PROJECT No	0422
DRAWN BY:	WFA
CHECKED BY:	TST
SCALE:	AS NOTED

SHEET TITLE

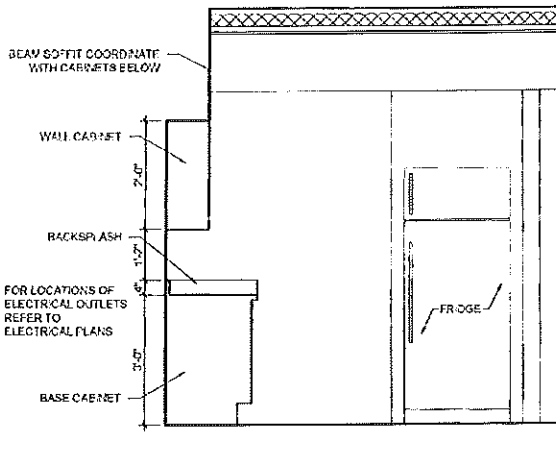
WALL SECTIONS

3.4

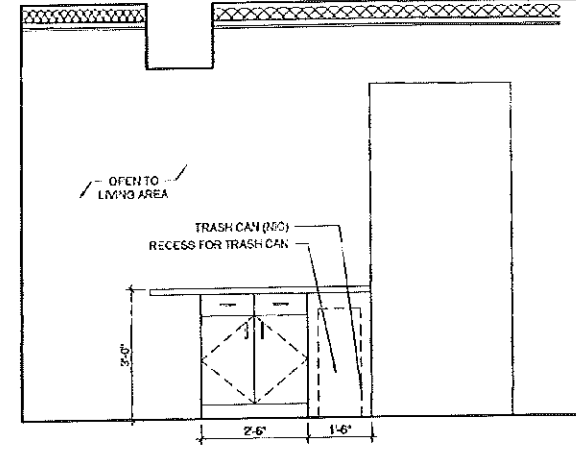
T:\01_TFH_Projects\02_Chestnut Street Lofts\02-Interior\02-01\02-01.dwg, 2/20/2008 10:13:14 AM, HP Design\TFC Rev. 17_08/10/08



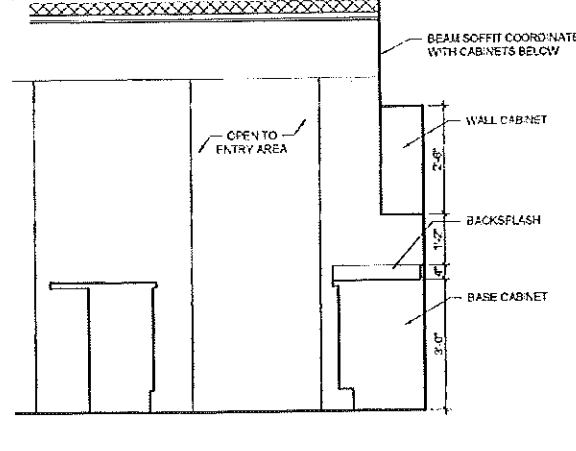
11 KITCHEN ELEVATION
A4.0 12'-1 1/2"



10 KITCHEN ELEVATION
A4.0 12'-1 1/2"

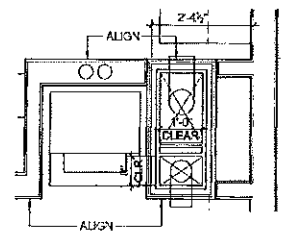


9 KITCHEN ELEVATION
A4.0 12'-1 1/2"

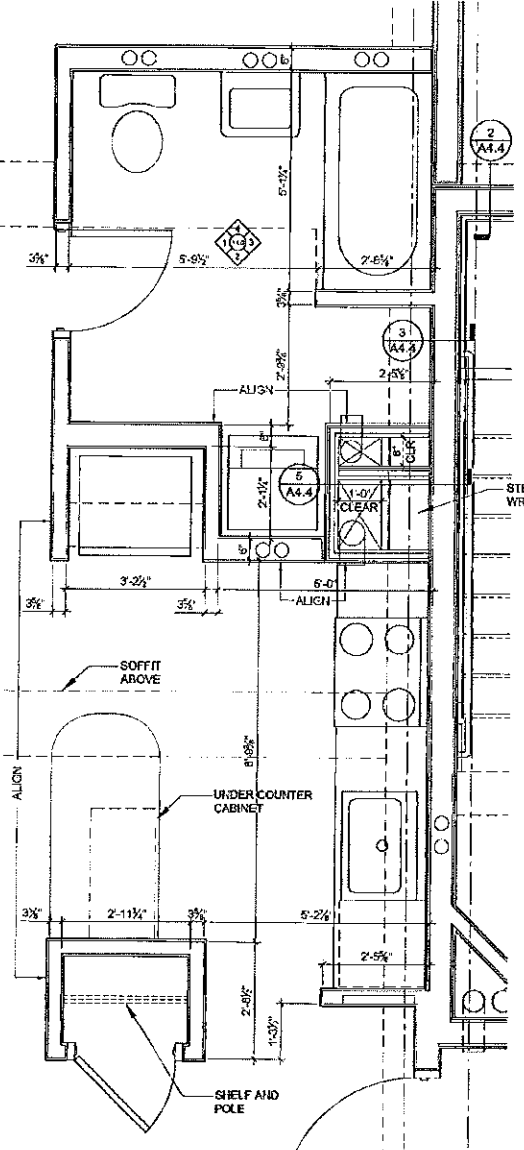


8 KITCHEN ELEVATION
A4.0 12'-1 1/2"

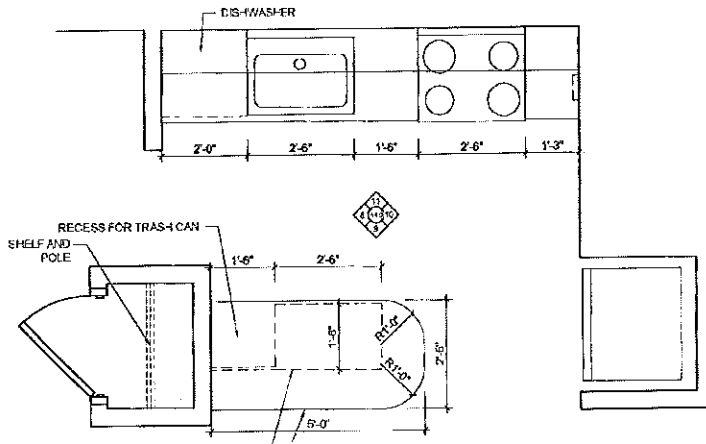
ENLARGED PLAN NOTES:
1.) DIMENSIONS ARE TO FACE OF STUD
2.) REFER TO PLAN SHEETS TO LOCATE CORE IN EACH INDIVIDUAL UNIT



7 TYPICAL MIDDLE UNIT CHASE PLAN DETAIL
A4.0 12'-1 1/2"

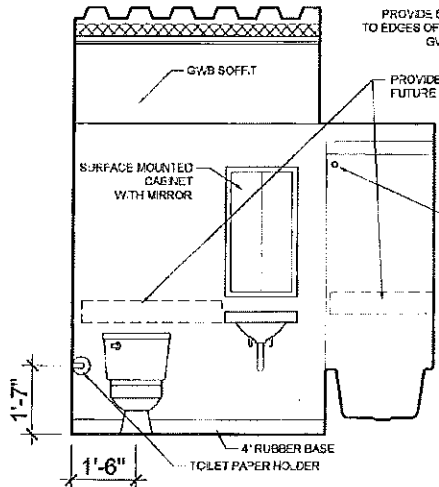


5 TYPICAL CORNER UNIT FLOORS (2-6) CORE PLAN
A4.0 12'-1 1/2"

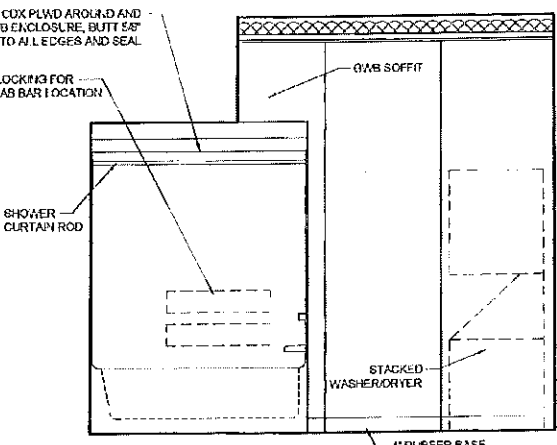


6 TYPICAL KITCHEN CABINERY PLAN
A4.0 12'-1 1/2"

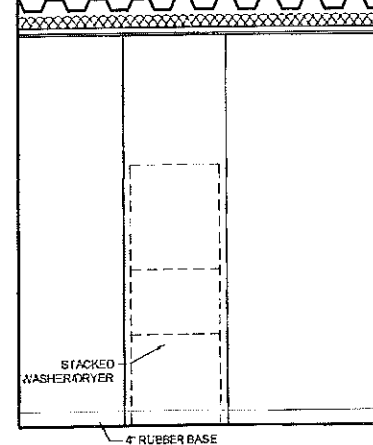
NOTE:
1. PROVIDE APPROPRIATE BLOCKING IN WALLS BEHIND ALL FIXTURES, PARTITIONS AND ACCESSORIES. BLOCKING FOR GRAB BARS TO BE PROVIDED IN WALLS OF BATHROOMS AT ACCESS ELEVATOR AS WELL AS NON-ACCESSIBLE UNITS
2. PROVIDE MOISTURE RESISTANT GWB AT ALL WALLS IN BATHROOMS TYPICAL



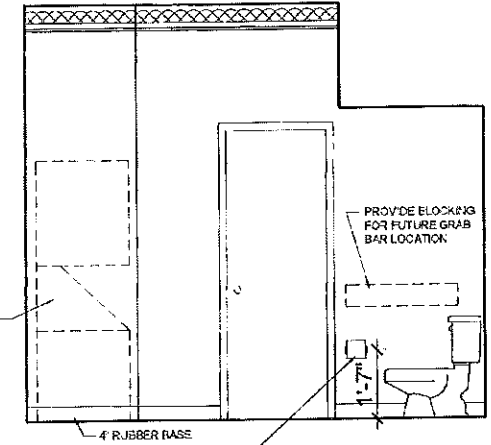
4 BATHROOM ELEVATION
A4.0 12'-1 1/2"



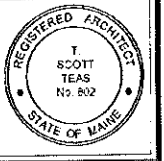
3 BATHROOM ELEVATION
A4.0 12'-1 1/2"



2 BATHROOM ELEVATION
A4.0 12'-1 1/2"



1 BATHROOM ELEVATION
A4.0 12'-1 1/2"



© 2008 TFH ARCHITECTS

CHESTNUT STREET LOFTS
URBAN REVITALIZATION PROJECT
BY CHESTNUT STREET LLC.
PORTLAND, MAINE

TFH ARCHITECTS
100 COMMERCIAL STREET
PORTLAND MAINE 04101
TELEPHONE 207 776 6141
ARCHITECTURE PLANNING

CONSULTANTS
PLUMBING AND FIRE CONSULTANTS
WILSON ENGINEERING
100 COMMERCIAL STREET
PORTLAND MAINE 04101
207 776 6141

STRUCTURAL ENGINEERING
STANLEY DESIGN CONSULTING
22 OAK STREET
PORTLAND MAINE 04101
207 776 6141

MEDICAL
WILSON ENGINEERING
100 COMMERCIAL STREET
PORTLAND MAINE 04101
207 776 6141

ELECTRICAL
WILSON ENGINEERING
100 COMMERCIAL STREET
PORTLAND MAINE 04101
207 776 6141

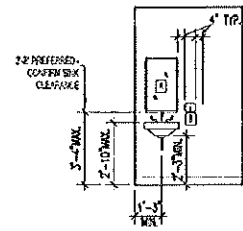
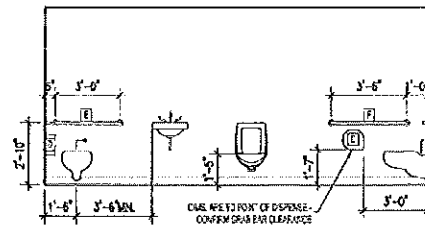
REVISIONS:
A 10% CONSTRUCTION DOCUMENTS 03/24/08

DATE:
PROJECT No.: 0422
DRAWN BY: RJS
CHECKED BY: TST
SCALE: AS NOTED

SHEET TITLE:
TYPICAL KITCHEN AND BATH LAYOUT
INTERIOR ELEVATIONS

A4.0

T:\010_TFH Projects\Chestnut Street Lofts\Drawings\0102\0102-01\0102-01-A4.1 - 14\"/>



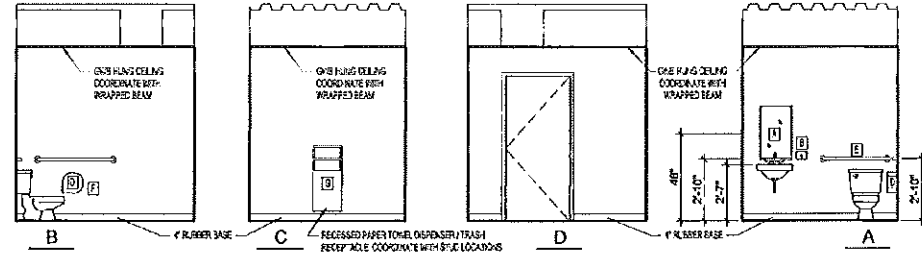
NOTES

1. WHEN GIVEN A RANGE OF DIMENSIONS FOR PLACEMENT, PLACE ALL FIXTURES OF SAME TYPE AT THE SAME ELEVATION THROUGHOUT, UNLESS OTHERWISE SPECIFIED.
2. FIXTURES TO BE DAMAGED OVER ENDS.
3. PROVIDE RECESSED TOILET BLOC OR BIF FALLS BEYOND ALL FIXTURES, PER SIFCO, AND ACCESSORIES.

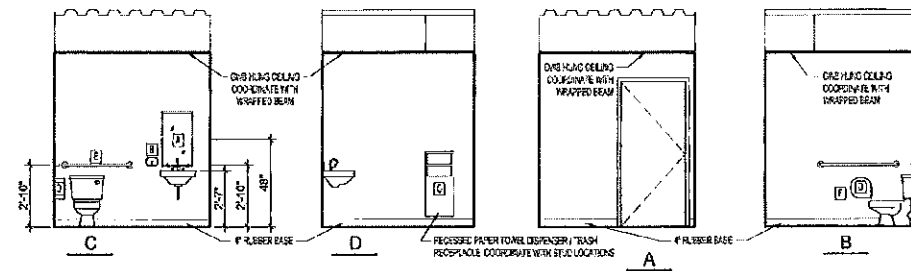
TOILET ACCESSORIES KEY

- (1) MIRROR 14\"/>
- (2) SOAP DISPENSER
- (3) PAPER TOWEL DISPENSER
- (4) TOILET PAPER DISPENSER
- (5) STAINLESS STEEL 11\"/>
- (6) STAINLESS STEEL 11\"/>
- (7) RECESSED PAPER TOWEL DISPENSER / TRASH RECEPTACLE

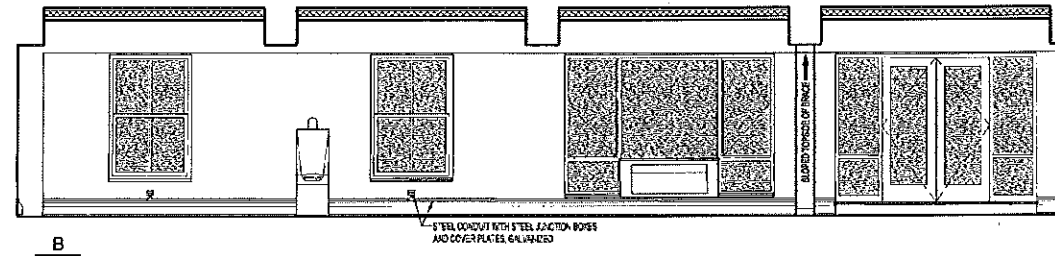
TYPICAL ADA FIXTURE LAYOUTS (NOT ALL TYPES ARE USED)
1/4" = 1'-0"



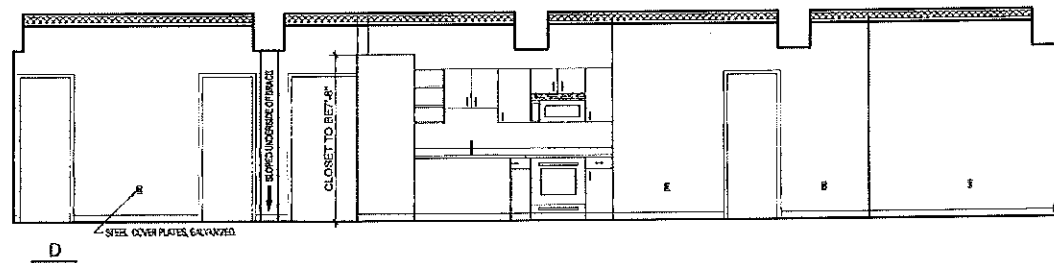
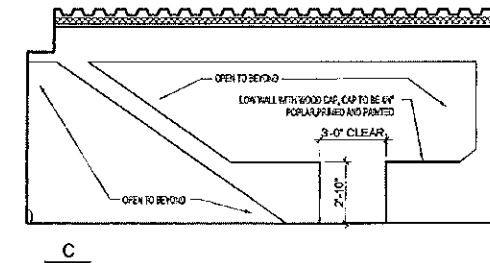
1 TOILET 102
1/4" = 1'-0"



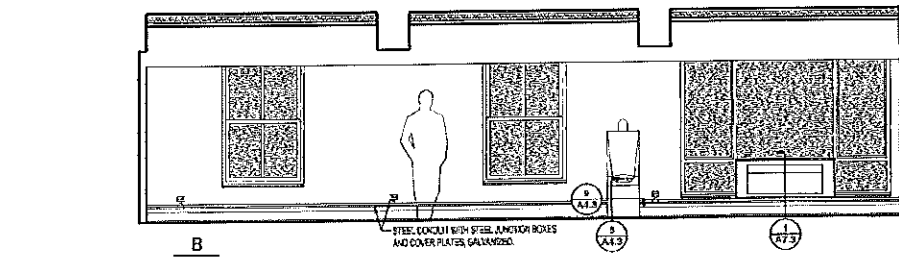
2 TOILET 103
1/4" = 1'-0"



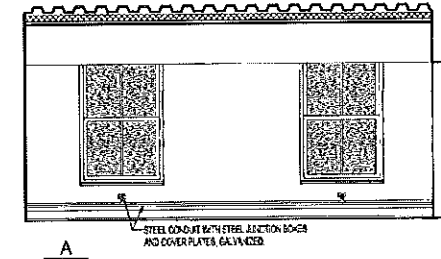
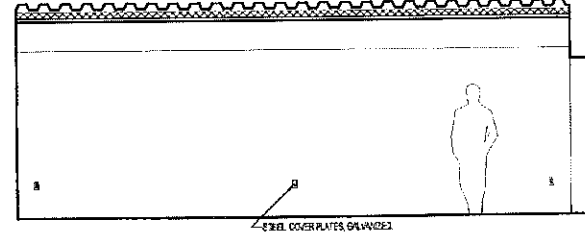
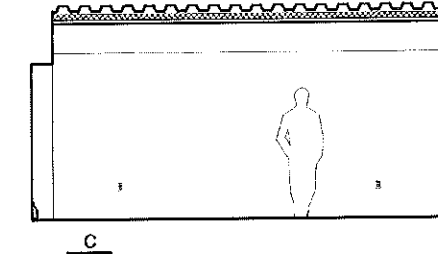
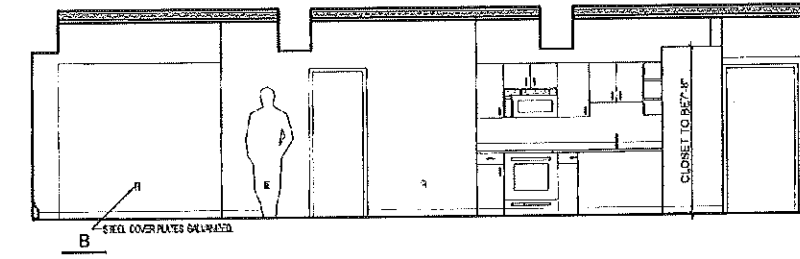
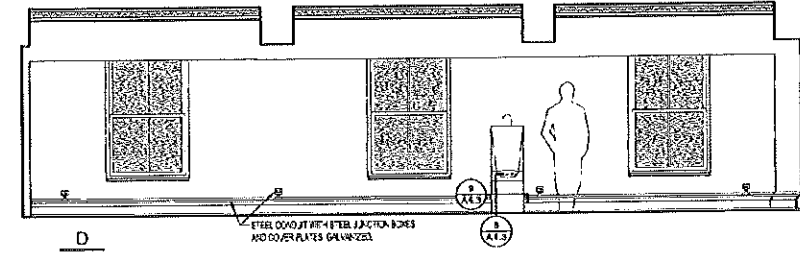
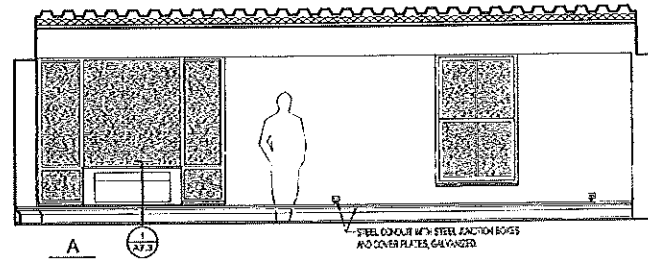
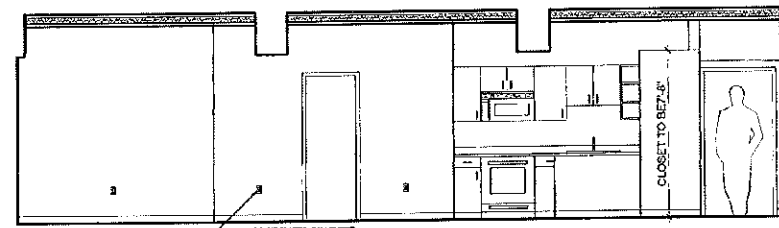
3 UNIT 7E
1/4" = 1'-0"



4 UNIT 3N
1/4" = 1'-0"



5 UNIT 3SE
1/4" = 1'-0"



© 2005 TFH ARCHITECTS

CHESTNUT STREET LOFTS
URBAN REVITALIZATION PROJECT
BY CHESTNUT STREET LLC.
PORTLAND, MAINE

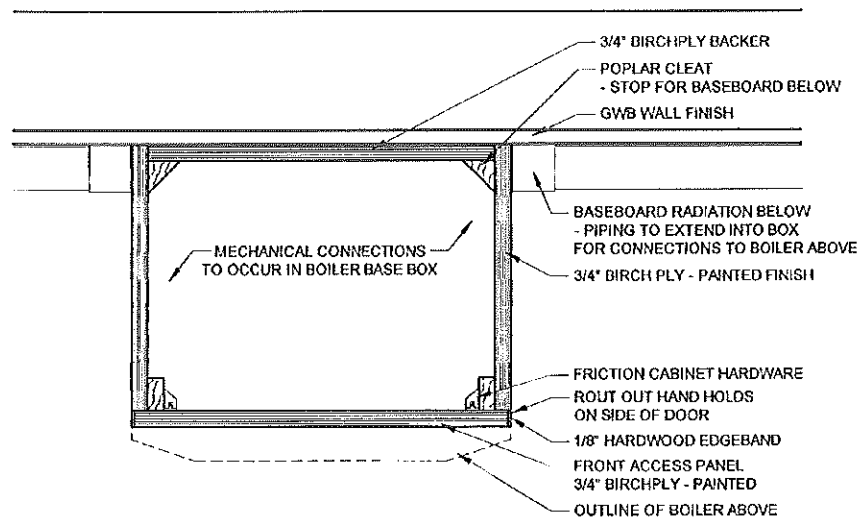
TFH ARCHITECTS
100 COMMERCIAL STREET
PORTLAND MAINE 04101
TELEPHONE: 207.775.6141
ARCHITECTURE PLANNING

CONSULTANTS:
LINE Use Consultants
285 Franklin Street
Portland, ME 04101
207.679.3910
STRUCTURAL
Structural Design Consulting
21 Commercial Street
Portland, ME 04101
207.679.6129
Mechanical
Maloney Engineering
13 South Street
Portland, ME 04101
207.679.6129
ELECTRICAL
Dunnell Engineering
7 Bureau Hill
Portland, ME 04101
207.655.6475

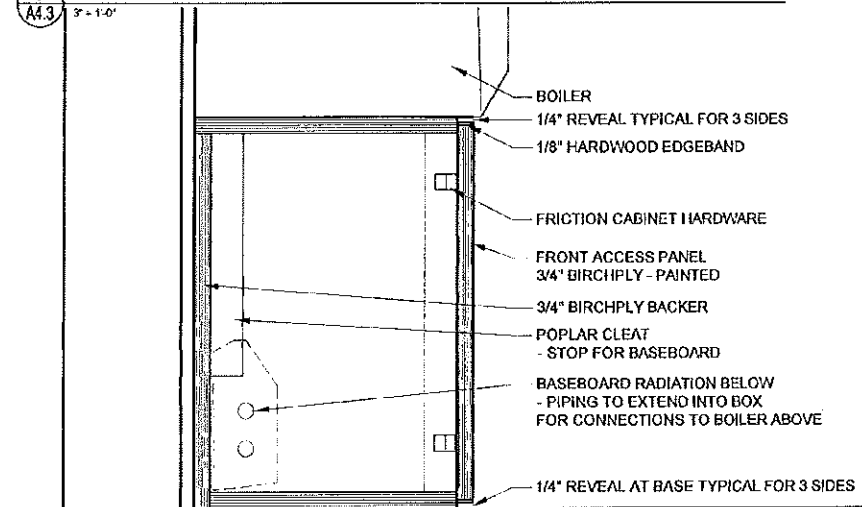
REVISIONS
100% CONSTRUCTION DOCUMENTS
DATE:
PROJECT No: 0422
DRAWN BY: RJS
CHECKED BY: TST
SCALE: AS NOTED
SHEET TITLE:
INTERIOR ELEVATIONS

A4.1

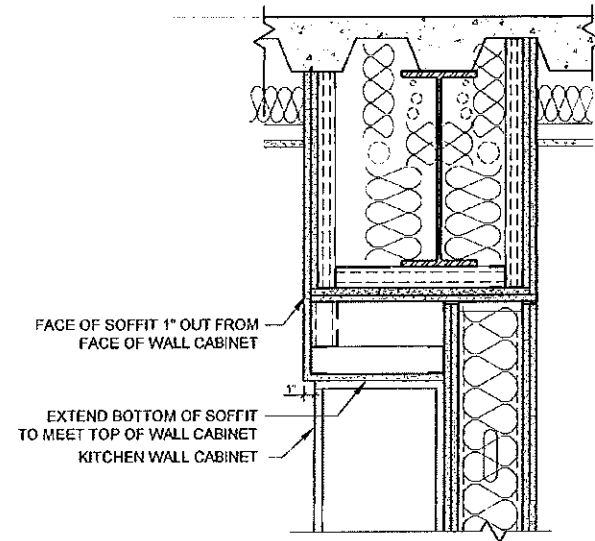
T:\01_TFH_Planetree\02_Chester\01_Detailed\03_Details\04_A4.3.dwg 1/11/2015 11:11 AM 1/11/2015 11:11 AM T.E. A4.3



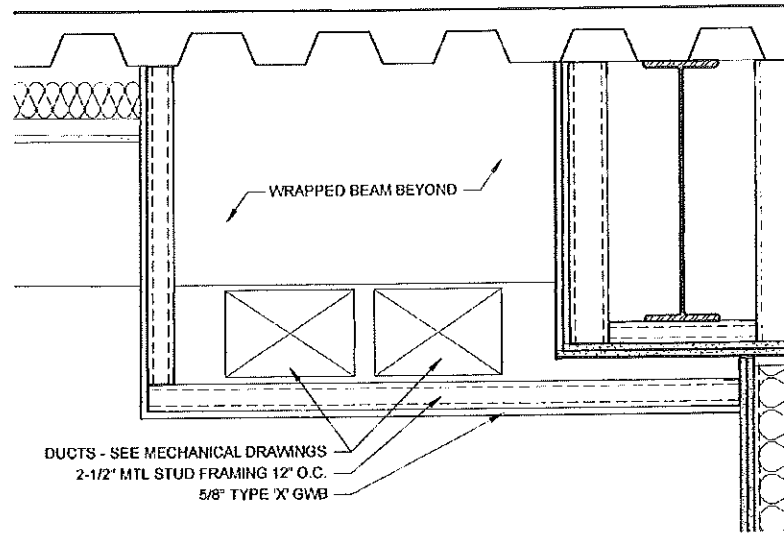
9 BOILER BASE BOX PLAN DETAIL
A4.3 1/2" = 1'-0"



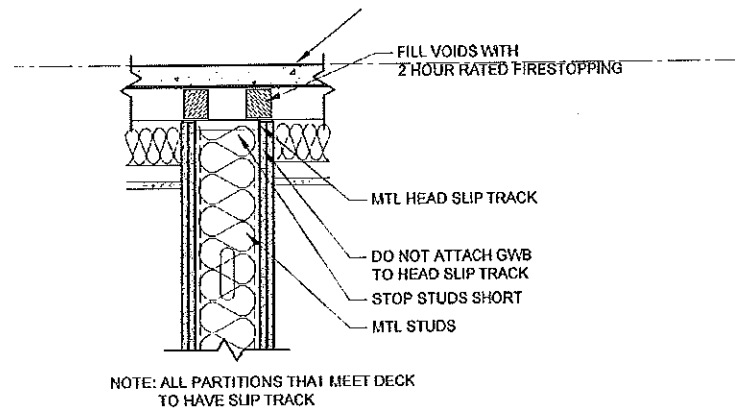
8 BOILER BASE BOX SECTION DETAIL
A4.3 1/2" = 1'-0"



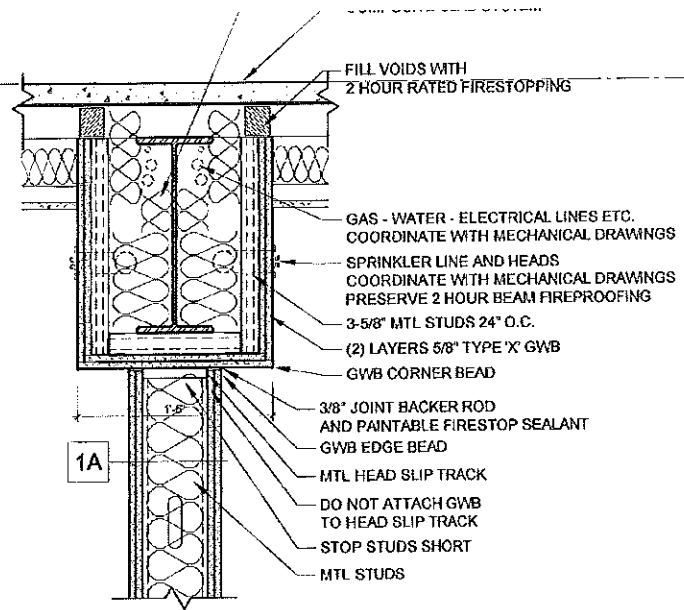
7 BEAM SOFFIT SECTION DETAIL AT KITCHEN WALL CABINET
A4.3 1/2" = 1'-0"



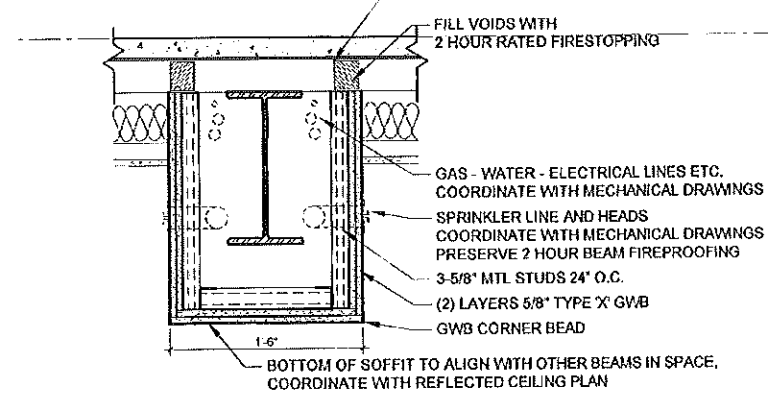
6 BEAM SOFFIT SECTION DETAIL AT COMMERCIAL SPACE DUCT
A4.3 1/2" = 1'-0"



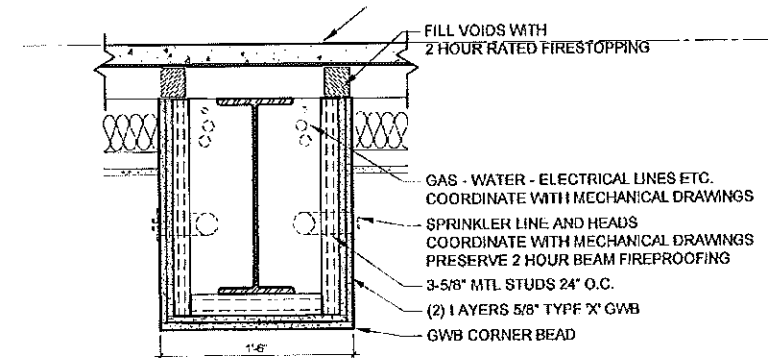
5 BEAM SOFFIT SECTION DETAIL AT PARTITION
A4.3 1/2" = 1'-0"



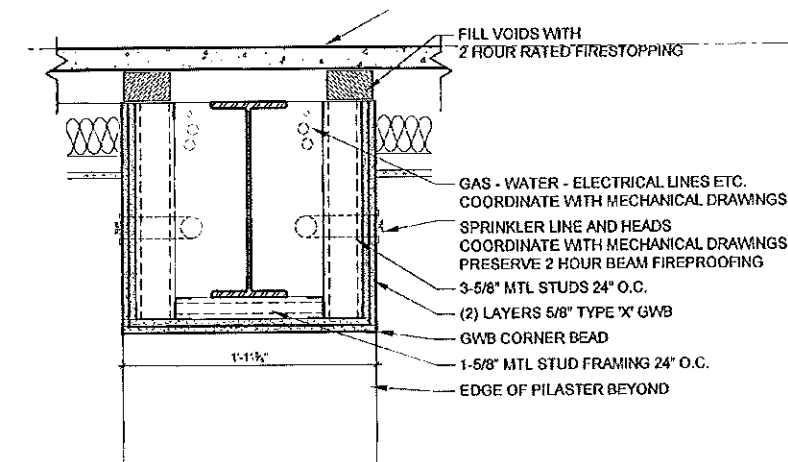
4 BEAM SOFFIT SECTION DETAIL AT PARTITION
A4.3 1/2" = 1'-0"



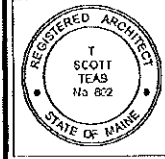
3 BEAM SOFFIT SECTION DETAIL AT SMALLER BEAM
A4.3 1/2" = 1'-0"



2 BEAM SOFFIT SECTION DETAIL
A4.3 1/2" = 1'-0"



1 BEAM SOFFIT SECTION DETAIL AT COMMERCIAL SPACE
A4.3 1/2" = 1'-0"



© 2015 TFH ARCHITECTS

CHESTNUT STREET LOFTS
URBAN REVITALIZATION PROJECT
BY CHESTNUT STREET LLC.
PORTLAND, MAINE

TFH ARCHITECTS
100 COMMERCIAL STREET
PORTLAND, MAINE 04101
TELEPHONE 207 775 6141
ARCHITECTURE PLANNING

CONSULTANTS
PLUMBING CONSULTANTS
202 Republic Street
Portland, ME 04101
207 679 3333
STRUCTURAL
Structural Design Consulting
21 Colburn Drive
019 Central Street, #500-001
207 534 8524
MECHANICAL
Whitney Engineering
12 Central Street
Portland, ME 04101
207 679 3333
ELECTRICAL
Bennett Engineering
7 Central Street
Portland, ME 04101
207 679 3333

REVISIONS
2. THIS DOCUMENT IS THE PROPERTY OF TFH ARCHITECTS

DATE:
PROJECT No: 0422
DRAWN BY: RJS
CHECKED BY: TST
SCALE: AS NOTED

SHEET TITLE:
INTERIOR DETAILS

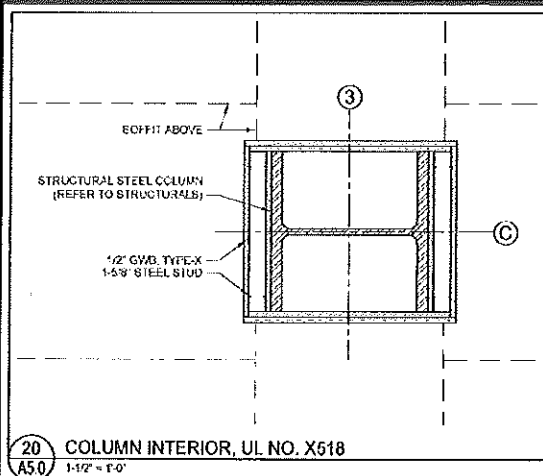
A4.3

PORTLAND, MAINE

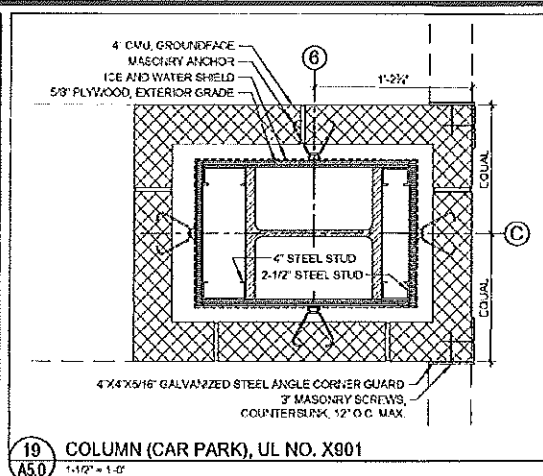
1/11
1/10
1/11

1/22
1/8
1/11
1/11

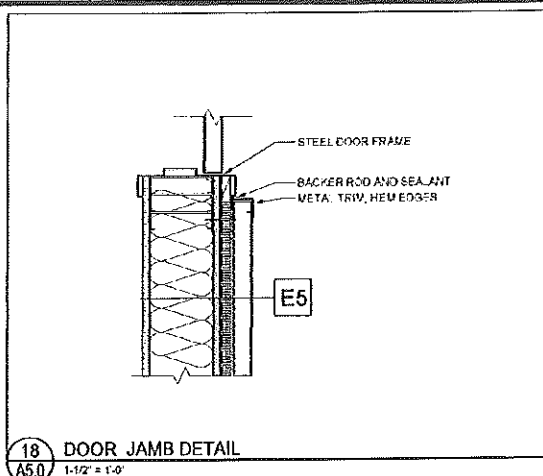
1700_TFH_PlanDetail_ChestnutStreetLofts_CAD.dwg, 2014/06/23, 11:41 AM, 1/10, 11/2014, 11:41 AM, 1/10, 11/2014, 11:41 AM, 1/10, 11/2014, 11:41 AM, 1/10, 11/2014, 11:41 AM



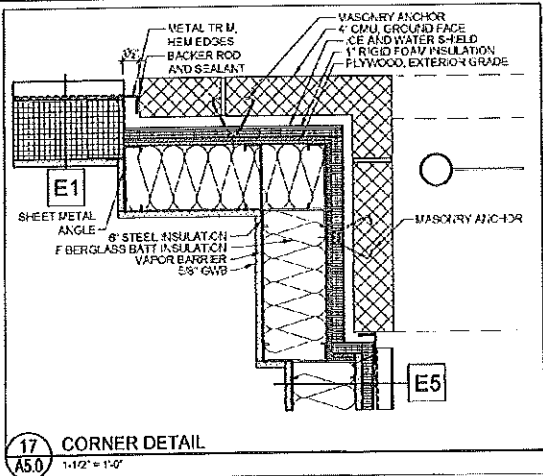
20 COLUMN INTERIOR, UL NO. X518
A5.0 1-1/2" x 1'-0"



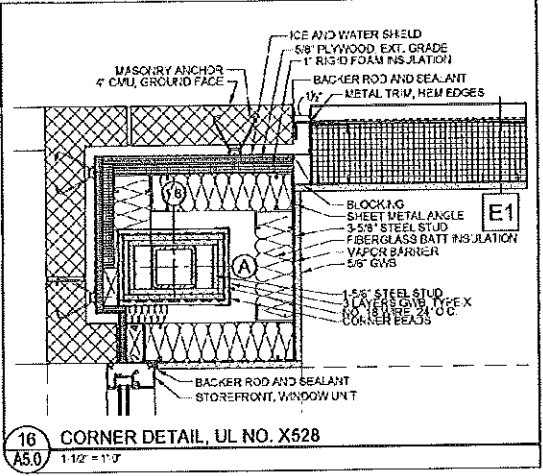
19 COLUMN (CAR PARK), UL NO. X901
A5.0 1-1/2" x 1'-0"



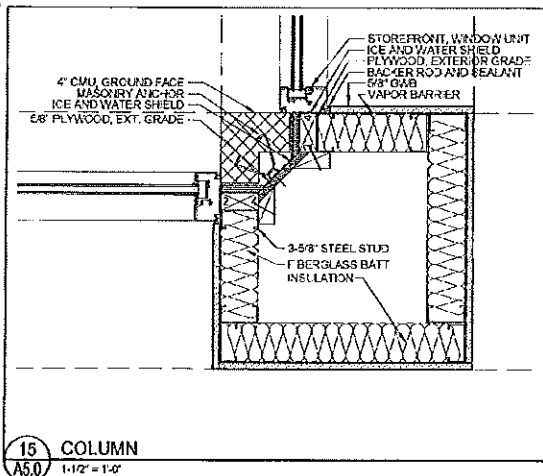
18 DOOR JAMB DETAIL
A5.0 1-1/2" x 1'-0"



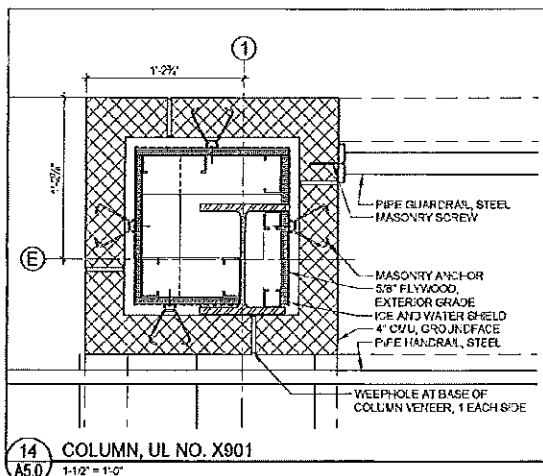
17 CORNER DETAIL
A5.0 1-1/2" x 1'-0"



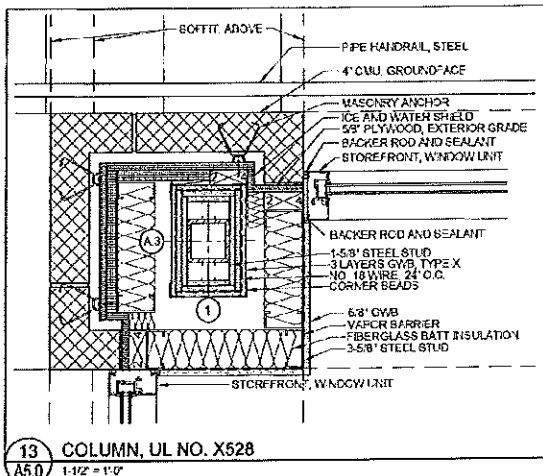
16 CORNER DETAIL, UL NO. X528
A5.0 1-1/2" x 1'-0"



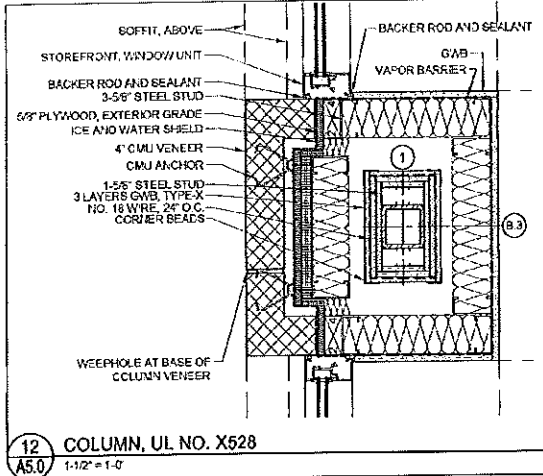
15 COLUMN
A5.0 1-1/2" x 1'-0"



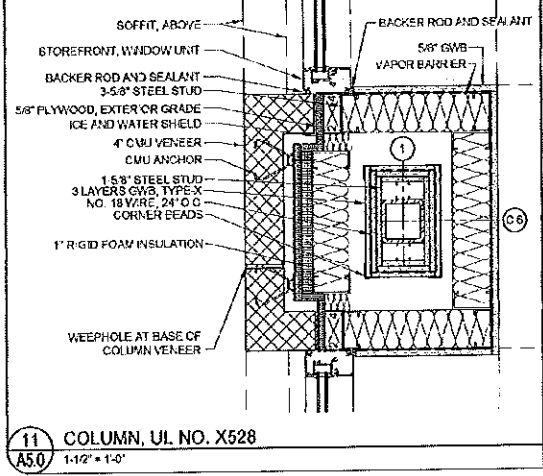
14 COLUMN, UL NO. X901
A5.0 1-1/2" x 1'-0"



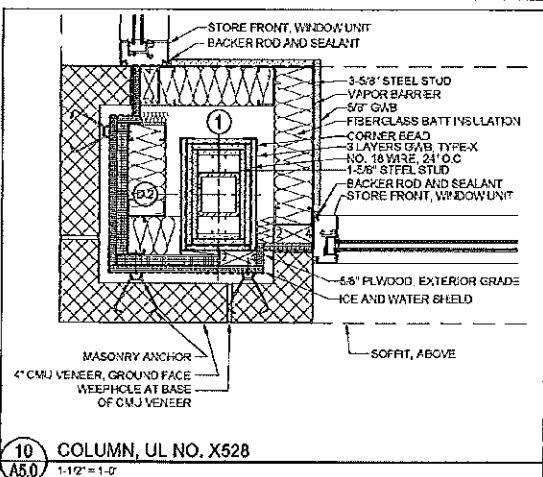
13 COLUMN, UL NO. X528
A5.0 1-1/2" x 1'-0"



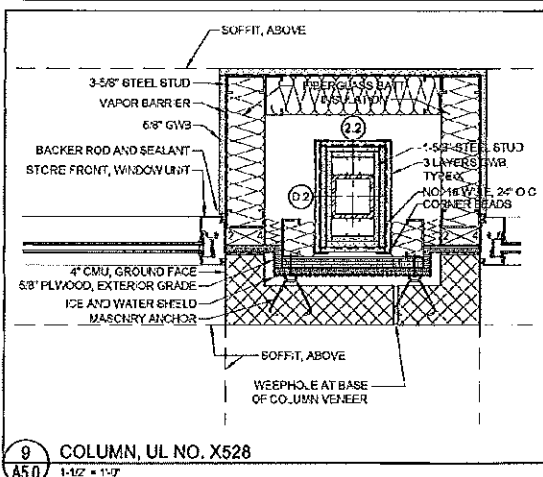
12 COLUMN, UL NO. X528
A5.0 1-1/2" x 1'-0"



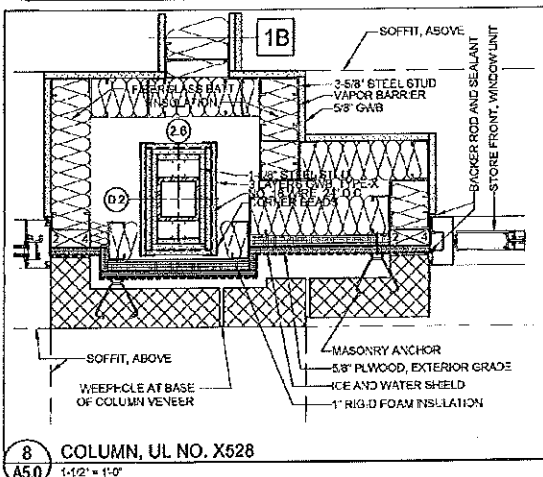
11 COLUMN, UL NO. X528
A5.0 1-1/2" x 1'-0"



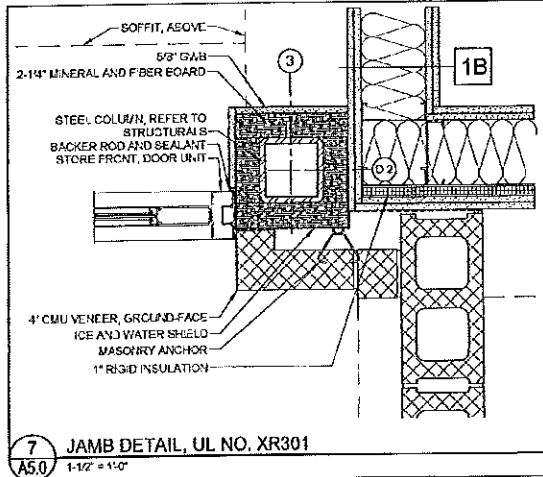
10 COLUMN, UL NO. X528
A5.0 1-1/2" x 1'-0"



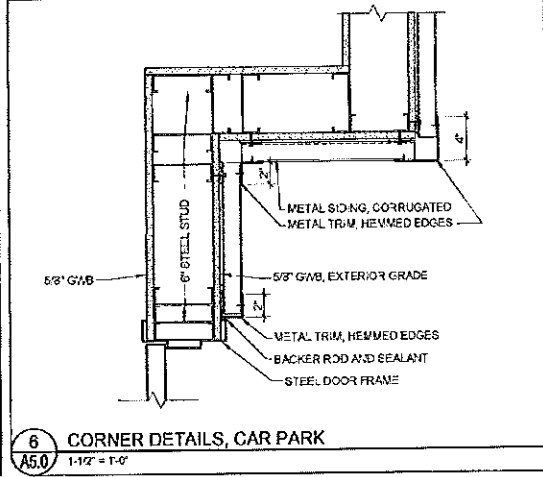
9 COLUMN, UL NO. X528
A5.0 1-1/2" x 1'-0"



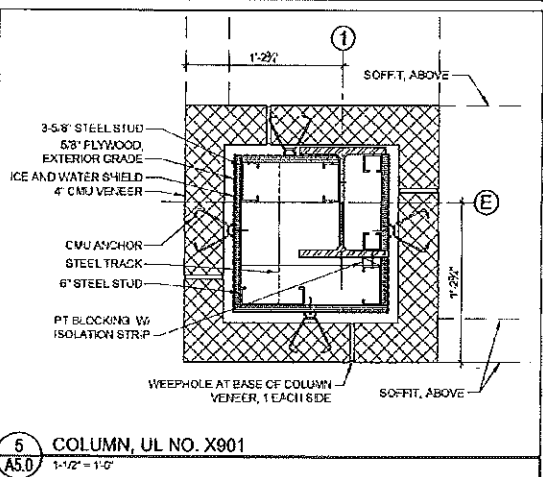
8 COLUMN, UL NO. X528
A5.0 1-1/2" x 1'-0"



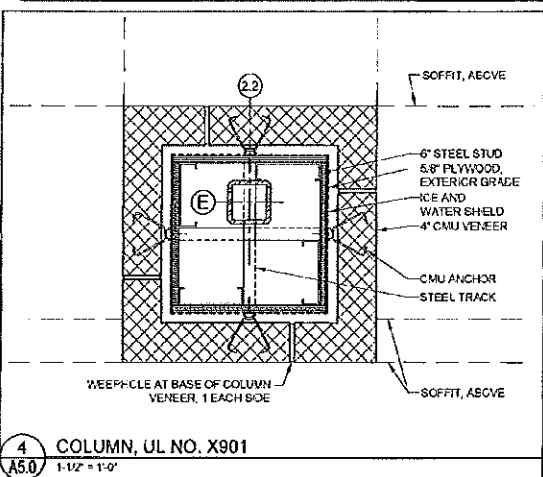
7 JAMB DETAIL, UL NO. XR301
A5.0 1-1/2" x 1'-0"



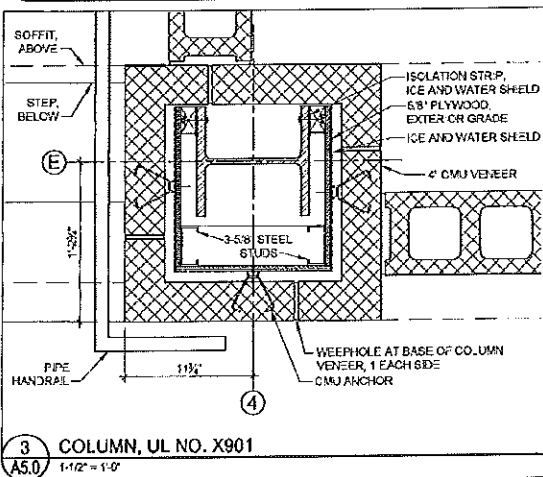
6 CORNER DETAILS, CAR PARK
A5.0 1-1/2" x 1'-0"



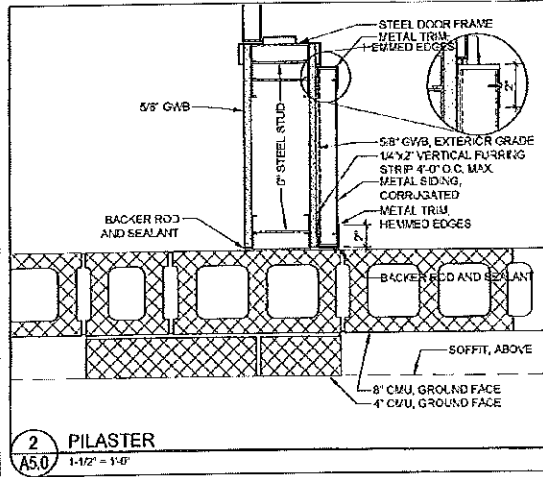
5 COLUMN, UL NO. X901
A5.0 1-1/2" x 1'-0"



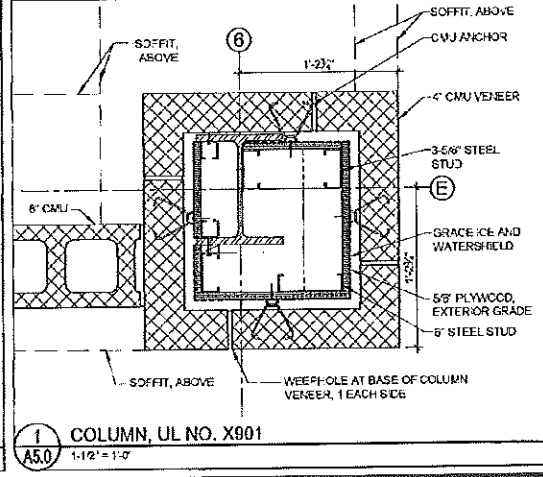
4 COLUMN, UL NO. X901
A5.0 1-1/2" x 1'-0"



3 COLUMN, UL NO. X901
A5.0 1-1/2" x 1'-0"



2 PILASTER
A5.0 1-1/2" x 1'-0"



1 COLUMN, UL NO. X901
A5.0 1-1/2" x 1'-0"



© 2005 TFH ARCHITECTS

CHESTNUT STREET LOFTS
 URBAN REVITALIZATION PROJECT
 BY CHESTNUT STREET LLC.
 PORTLAND, MAINE

TFH ARCHITECTS
 100 COMMERCIAL STREET
 PORTLAND MAINE 04101
 TELEPHONE 237 776 6141
 ARCHITECTURE PLANNING

CONSULTANTS
 East Line Consultants
 550 Riverside Street
 Portland, ME 04101
 207 776 6141

Structural Design Consulting
 22 Oakwood Drive
 200 Cribben Beach, ME 04041
 207 624 8208

Mechanical
 Willey Engineering
 11 Sherman Street
 Portland, ME 04101
 207 474 7100

Electrical
 Sealed Engineering
 7 Eureka Road
 Bangor, ME 04412
 207 929 8173

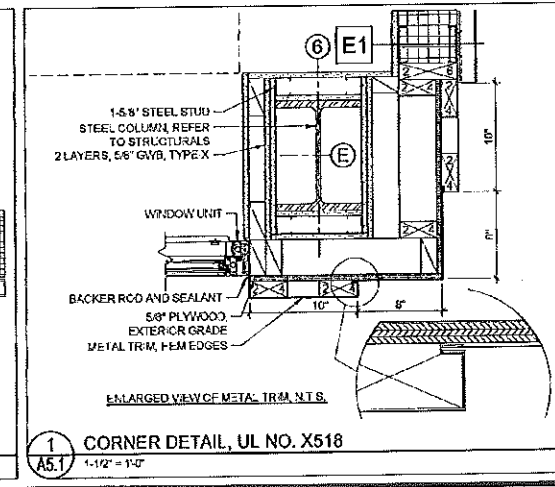
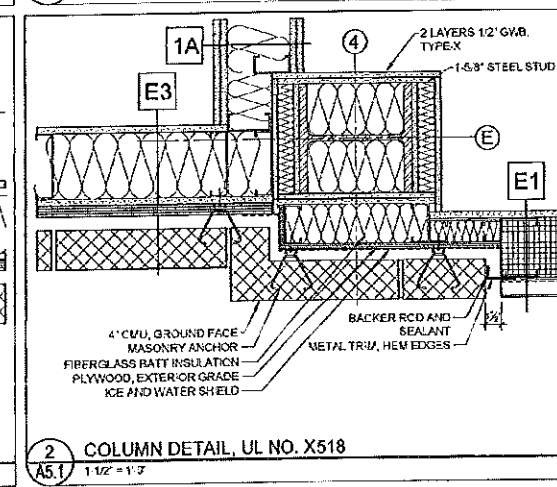
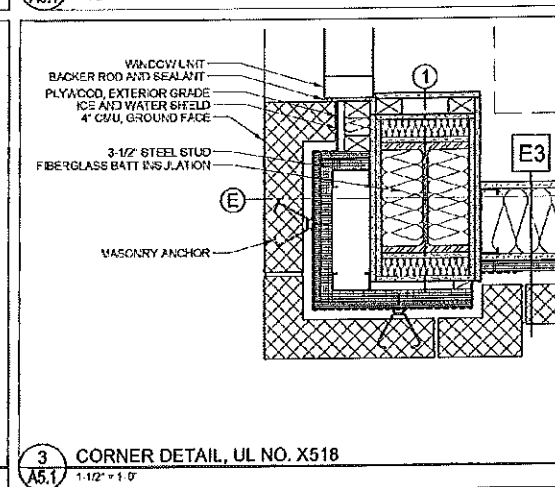
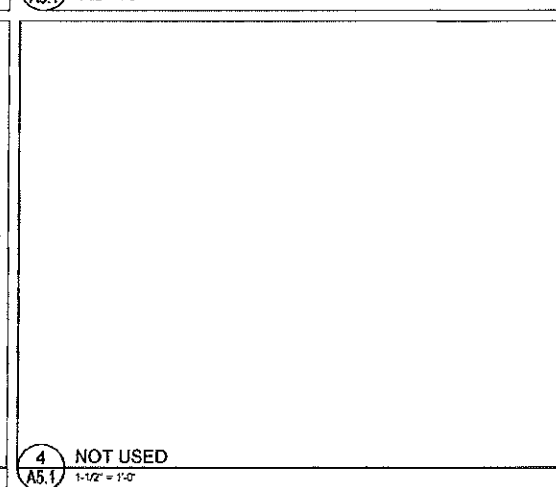
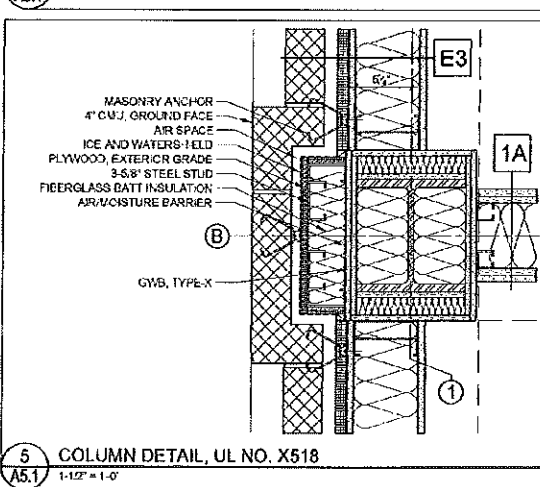
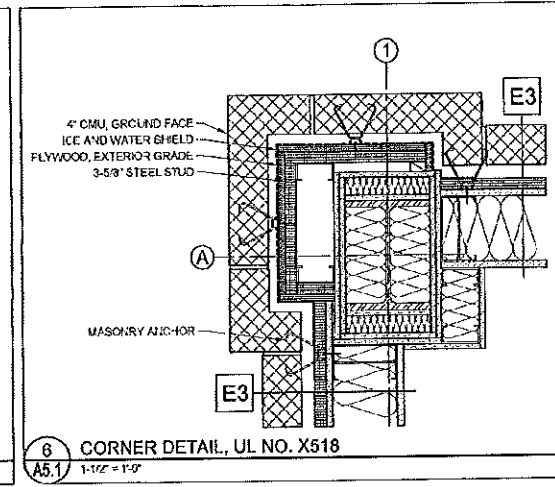
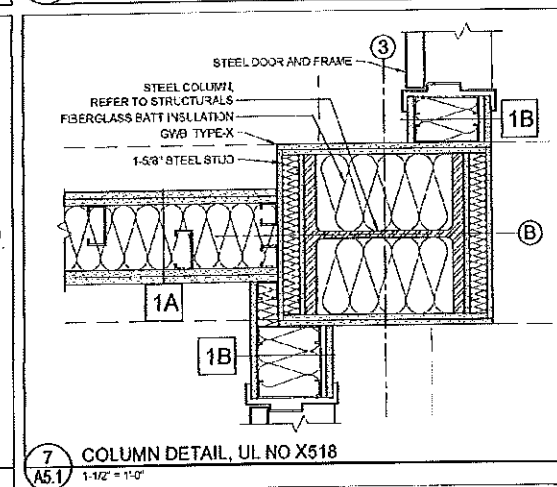
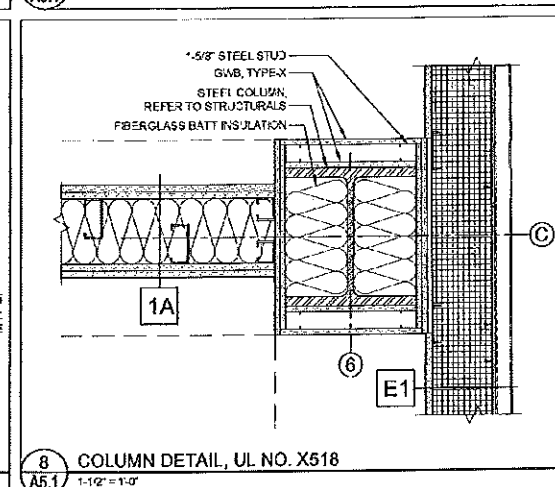
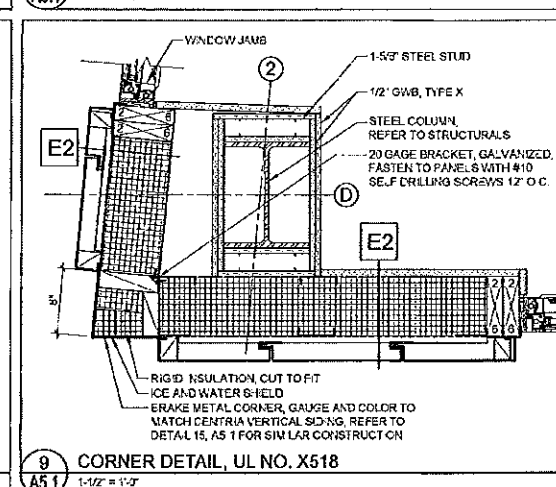
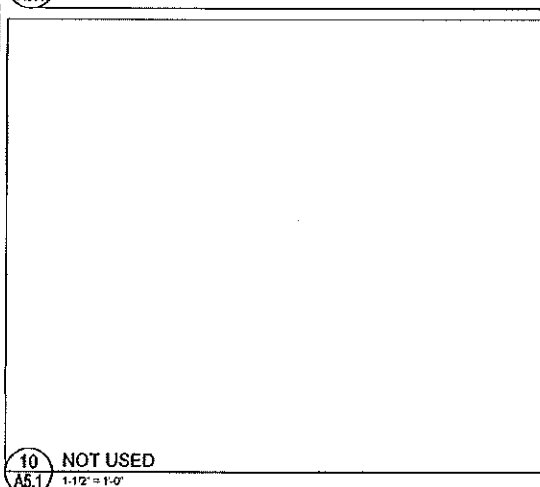
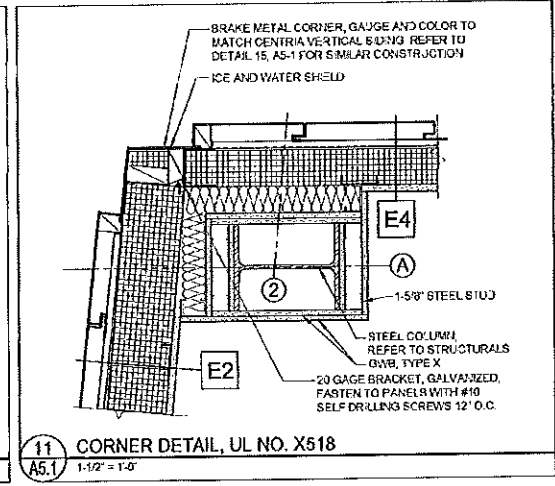
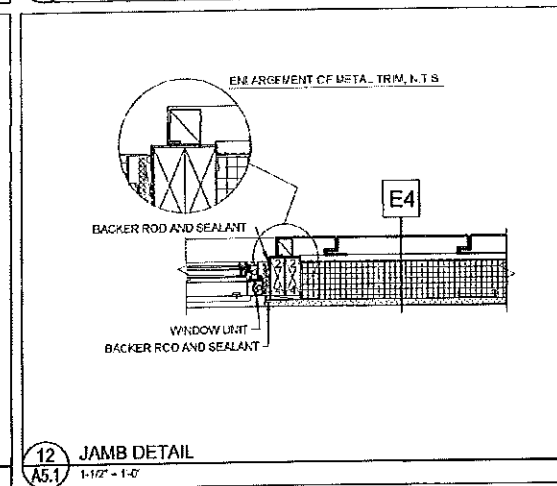
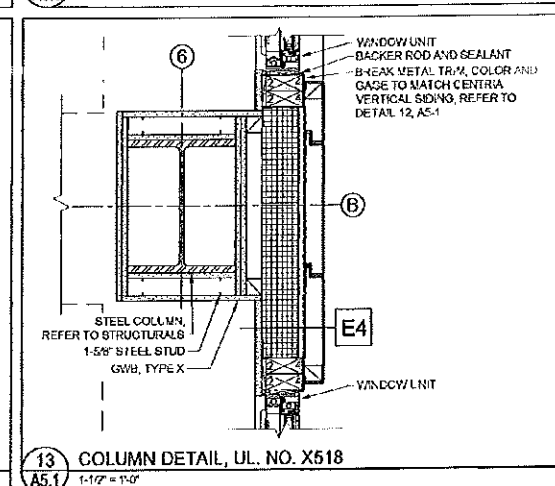
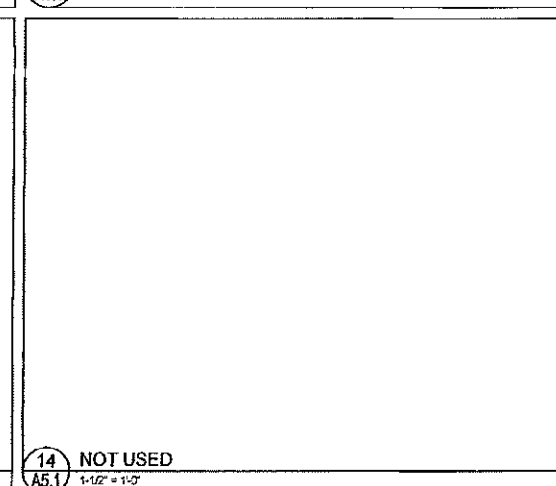
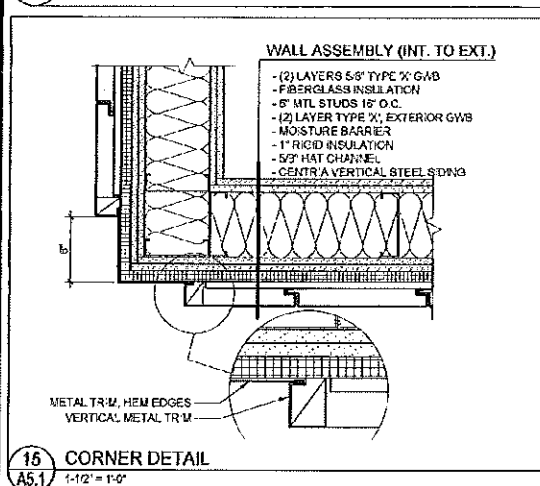
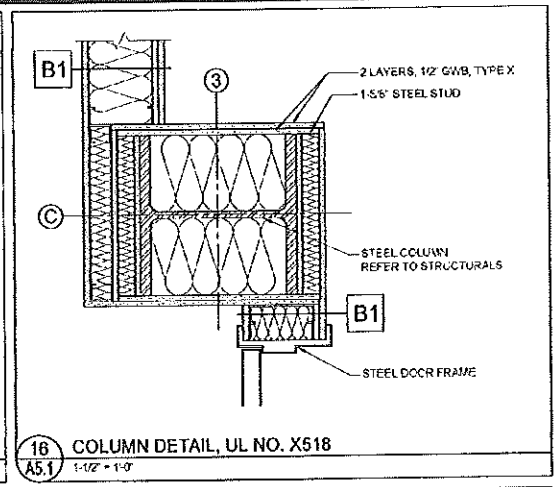
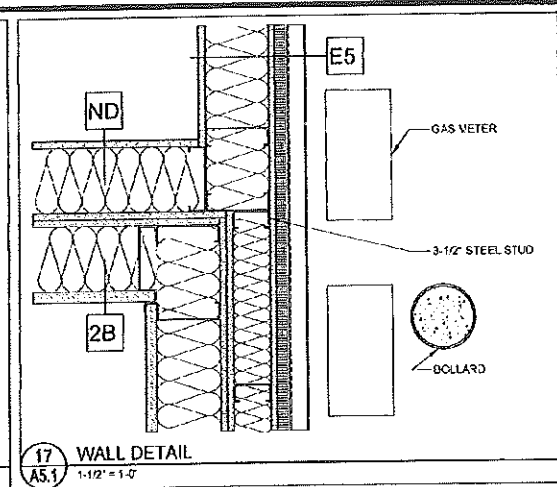
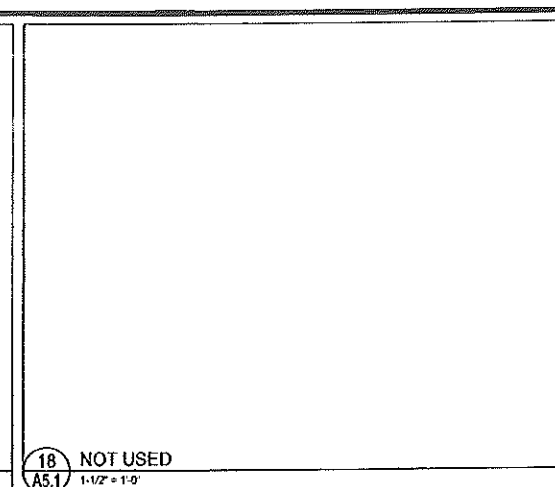
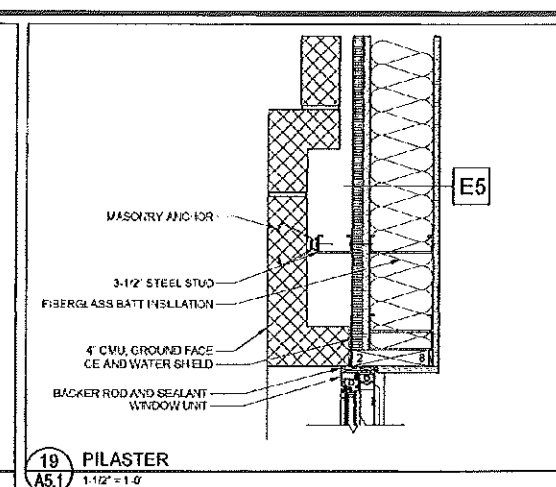
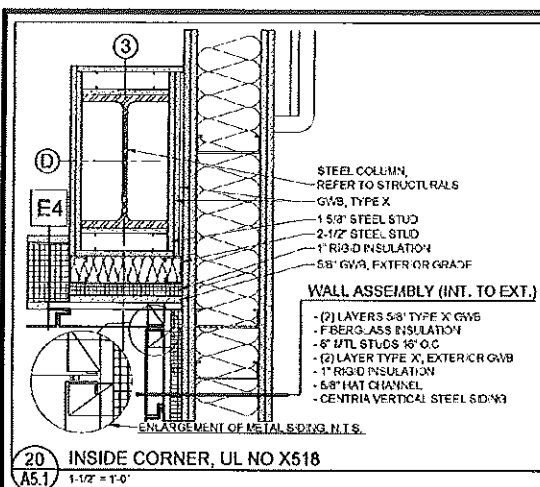
REVISIONS

DATE
 PROJECT No. 0422
 DRAWN BY: CSC
 CHECKED BY: ISJ
 SCALE: AS NOTED

SHEET TITLE
PLAN DETAILS

A5.0

T:\01_TFH Projects\0422_Chestnut Street\0422_Chestnut Street.dwg, 11/25/2010, 10:52:29 AM, J.P. Design/1750C Plan 01_A5.1.dwg



© 2005 TFH ARCHITECTS

CHESTNUT STREET LOFTS

URBAN REVITALIZATION PROJECT
BY CHESTNUT STREET LLC.
PORTLAND, MAINE

TFH ARCHITECTS
100 COMMERCIAL STREET
PORTLAND, MAINE 04101
TELEPHONE: 207 775 6141
ARCHITECTURE PLANNING

CONSULTANTS

MECHANICAL CONSULTANTS
207 775 6141

STRUCTURAL
207 775 6141

MECHANICAL
207 775 6141

ELECTRICAL
207 775 6141

REVISIONS:

DATE: _____

PROJECT No: 0422

DRAWN BY: CSB

CHECKED BY: TBT

SCALE: AS NOTED

SHEET TITLE:
PLAN DETAILS

A5.1