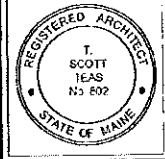


1501_TFH Project 0422_Chestnut Street Lofts - Rev 0422 - 0500 1/18" and 1/8" Scale Plans - 1/18" and 1/8" Scale Plans - 1/18" and 1/8" Scale Plans - 1/18" and 1/8" Scale Plans



© 2005 TFH ARCHITECTS

CHESTNUT STREET LOFTS
 URBAN REVITALIZATION PROJECT
 BY CHESTNUT STREET LLC,
 PORTLAND, MAINE

TFH ARCHITECTS
 100 COMMERCIAL STREET
 PORTLAND, MAINE 04101
 TELEPHONE 207 715 6141
 ARCHITECTURE PLANNING

CONSULTANTS:
LEAS
 100 Commercial Street
 Portland, ME 04101
 207 715 6141
SCHEIDT
 Structural Design Consulting
 22 Oakmont Drive
 Old Orchard Beach, ME 04064
 207 864 4328
VERMILION
 Energy Engineering
 13 Dorset Drive
 Portland, ME 04101
 207 874 7419
BLISSMAN
 Electrical Engineering
 1 Barrett Street
 Portland, ME 04102
 207 869 4419

REVISIONS:
 2. 1/24/06 CONSTRUCTION DOCUMENTS

DATE:
 PROJECT No: 0422
 DRAWN BY: R.B.
 CHECKED BY: TST
 SCALE: AS NOTED

SHEET TITLE:
FIFTH AND SIXTH FLOOR REFLECTED CEILING PLANS

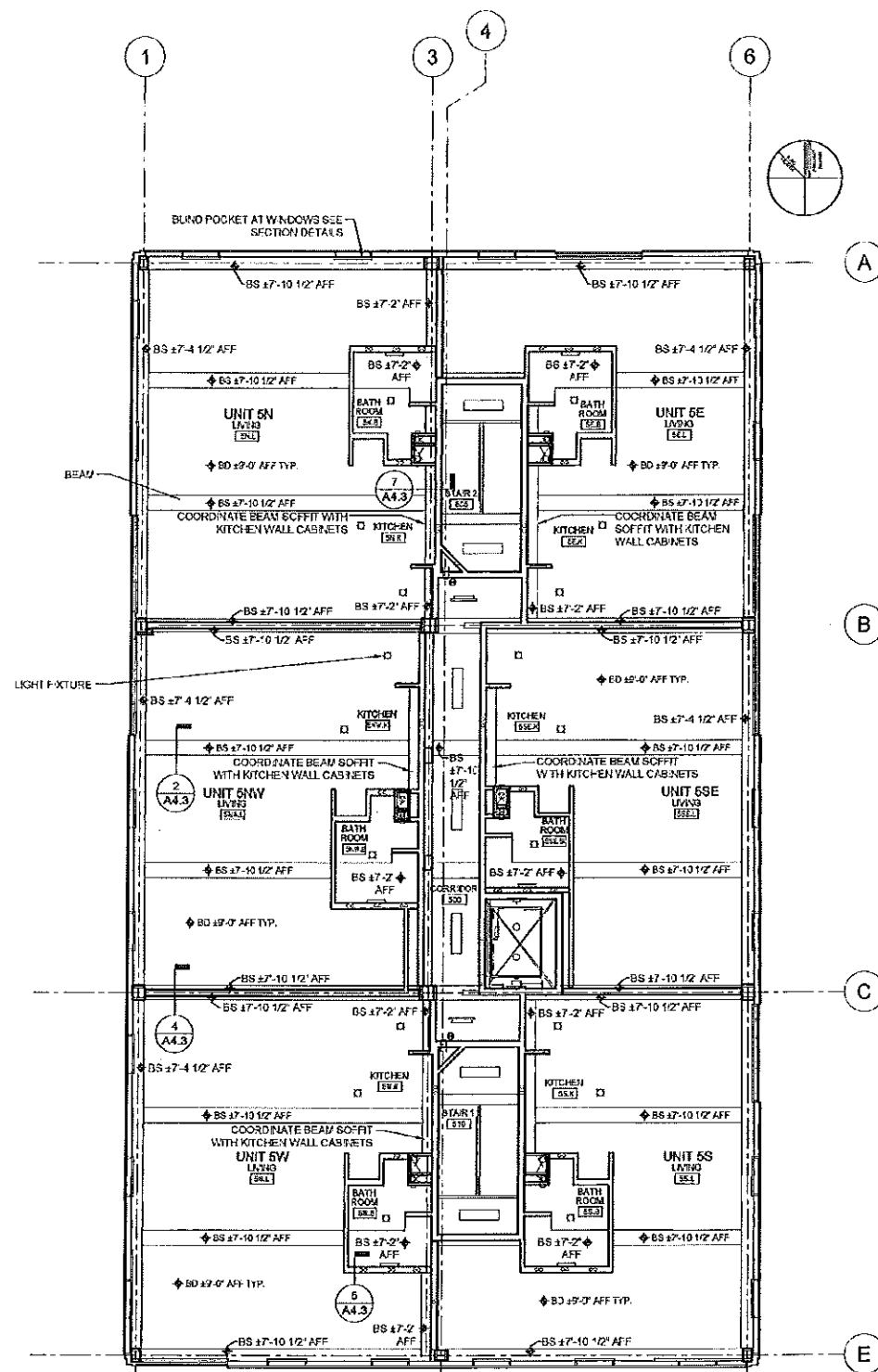
A1.9

**REFLECTED CEILING PLAN
 NOTES AND LEGEND**

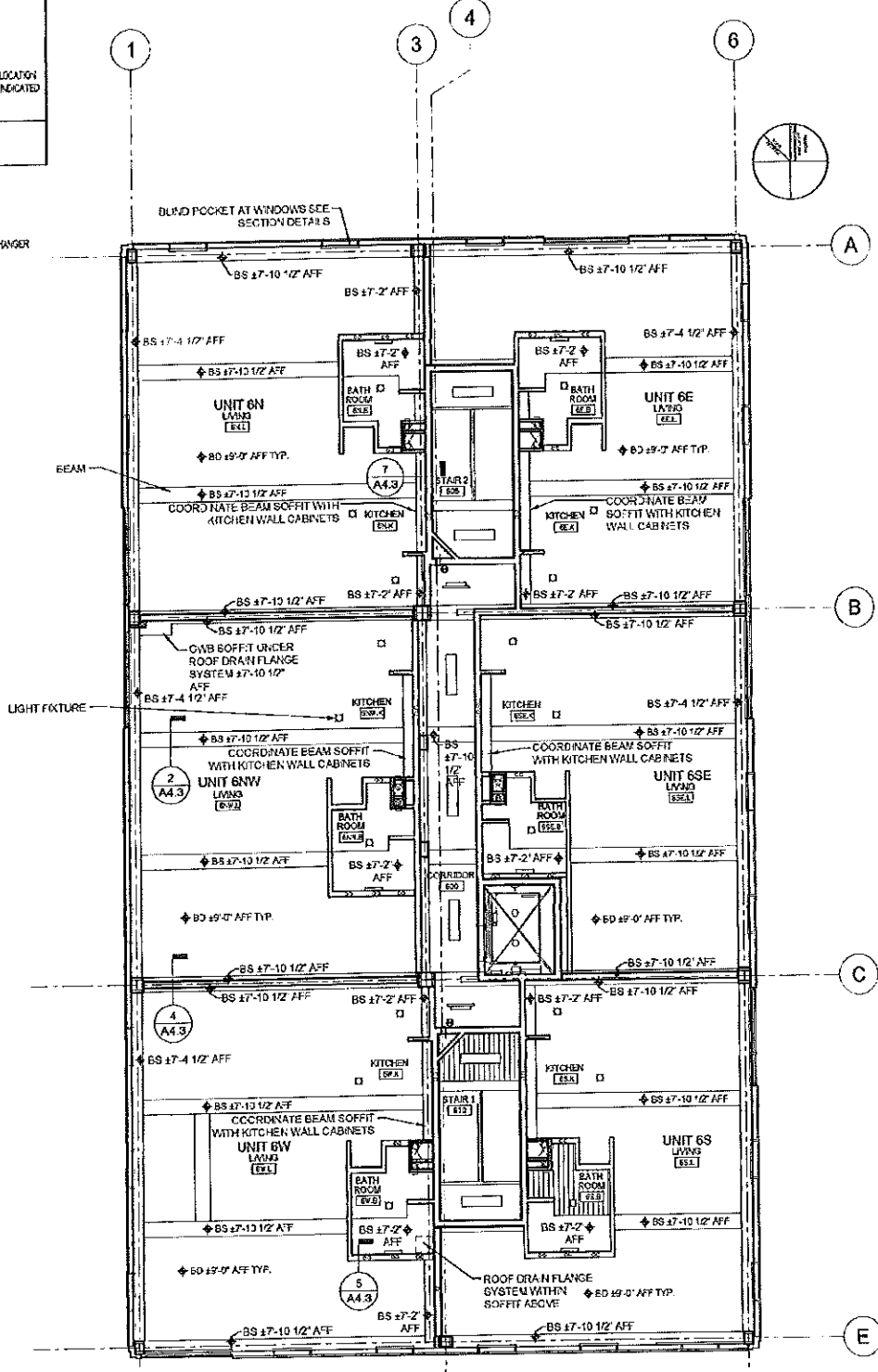
GENERAL RCP NOTES:
 1) BS = BOTTOM OF SOFFIT
 2) BS = BOTTOM OF SUSPENDED GAB CEILING
 3) LIGHT FIXTURES SHOWN
 4) STRUCTURAL BEAM DEPTHS VARY BY LOCATION
 SOFFITS TO BE BUILT TO ELEVATIONS AS INDICATED
 ON REFLECTED CEILING PLANS

GAB SOFFIT

NOTE:
 SUSPENDED GYP CEILING TO BE:
 3/4" GYP BOARD
 SUSPENDED METAL GRID
 5" BATT INSULATION
 1/2" X 1/2" GYP INSULATION EQUALIZER HANGER

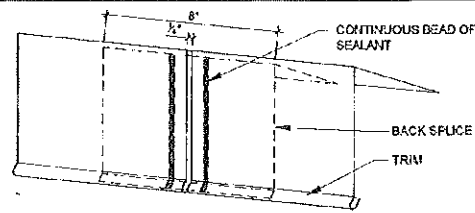


1
A1.8
 FIFTH FLOOR REFLECTED CEILING PLAN
 1/8" = 1'-0"



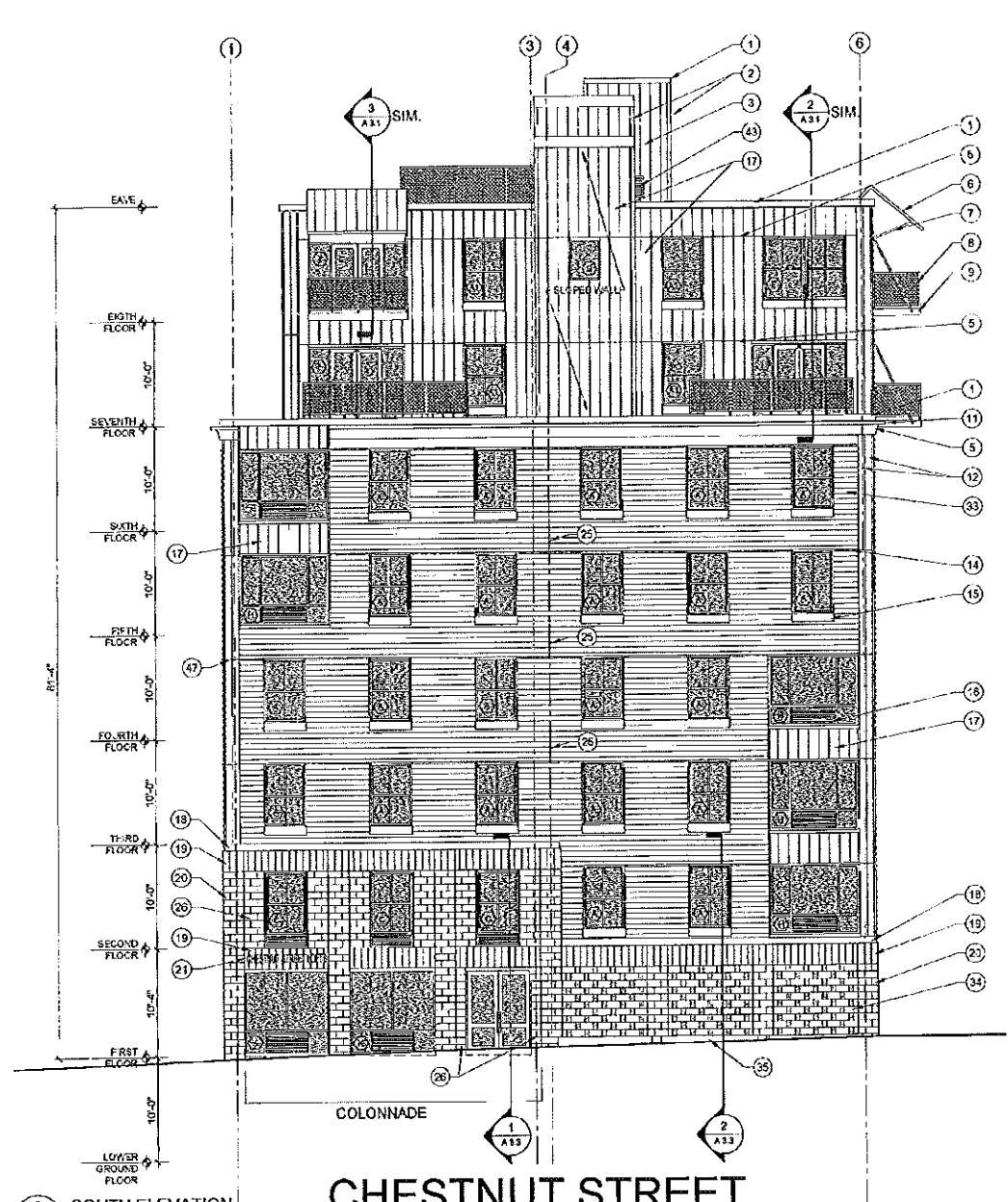
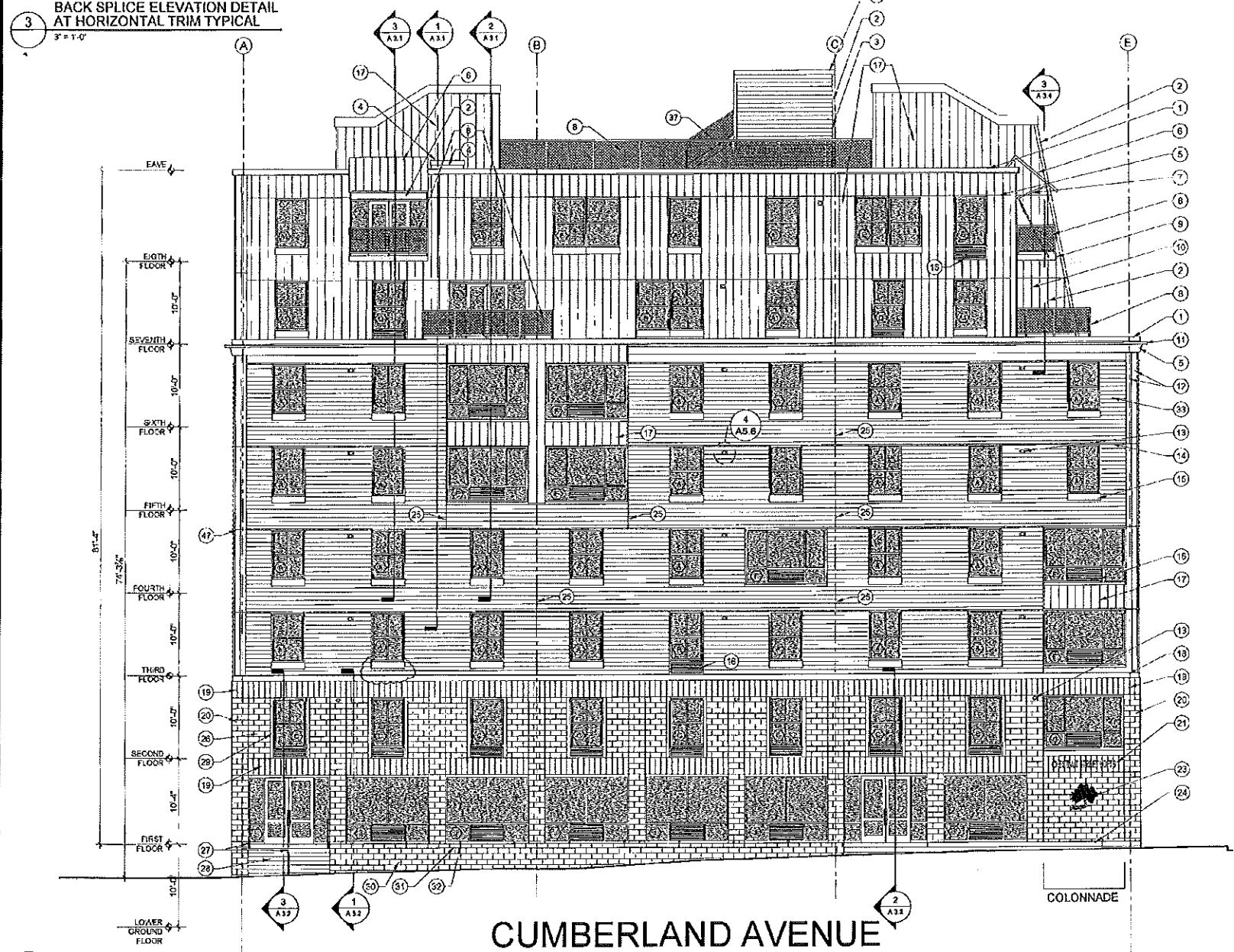
2
A1.9
 SIXTH FLOOR REFLECTED CEILING PLAN
 1/8" = 1'-0"

T:\01_TFH\Projects\022_Chestnut\Drawings\022_Chestnut\022_Chestnut\022_Chestnut.dwg 1/17/2008 10:44:58 AM, per: [redacted] 2502 PLO, [redacted]



ELEVATION NOTES:

1. ALL RUNS OF METAL TRIM THAT REQUIRE (BOTH HORIZONTAL AND VERTICAL) JOINTS ARE TO BE BACK SPLICE TYPE JOINTS.
2. NO RIVETS ARE TO BE USED ON METALWORK

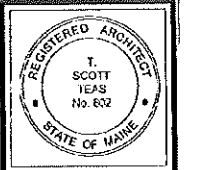


EXTERIOR ELEVATION MATERIALS LEGEND		
CODE	DESCRIPTION	MATERIAL / COLOR
1	ROOF EDGE STRIP	PRE-FINISHED METAL - (COLOR)
2	TRIM	PRE-FINISHED METAL - (COLOR)
3	HORIZONTAL CORRUGATED SIDING	PRE-FINISHED METAL - (COLOR)
4	ROOF ACCESS HATCH	
5	HORIZONTAL ACCENT FLASHING JOINT	PRE-FINISHED METAL - (COLOR)
6	CANOPY	PRE-FINISHED METAL - (COLOR)
7	BALCONY AND SUPPORT	GALVANIZED STEEL
8	BALCONY GUARD	GALVANIZED STEEL 2" TUBE FRAME WITH 2X2 GALV STL MESH
9	BALCONY DECK FRAME	GALVANIZED STEEL CHANNELS
10	VERTICAL CONCEALED FASTENER SIDING	PRE-FINISHED METAL - (COLOR)
11	CORNICE	PRE-FINISHED METAL - (COLOR)
12	TRIM	PRE-FINISHED METAL - (COLOR)

EXT. ELEVATION MATERIALS LEGEND (CONTINUED)		
CODE	DESCRIPTION	MATERIAL / COLOR
13	BOILER VENT WITH FLASHING PLATE	METAL - COLOR TO MATCH ADJACENT SIDING
14	HORIZONTAL TRIM	PRE-FINISHED METAL - (COLOR)
15	WINDOW SILL TRIM	PRE-FINISHED METAL - (COLOR)
16	LOUVER	
17	VERTICAL CONCEALED FASTENER SIDING	PRE-FINISHED METAL - (COLOR)
18	TRANSITION BELT TRIM	PRE-FINISHED METAL - (COLOR)
19	MASONRY SOLDIER COURSE	MONUMENTAL SERIES GROUND FACE BLOCK - (COLOR)
20	MASONRY COLUMN VENEER	GROUND FACE BLOCK - (COLOR)
21	DIMENSIONAL LETTER BUILDING SIGNAGE	ANODIZED ALUMINUM
22	TRIM	PRE-FINISHED METAL - (COLOR)
23	CHESTNUT STREET LOFTS RAISED LOGO	ANODIZED ALUMINUM
24	STEPS	BRICK - COORDINATE WITH CIVIL DRAWINGS

EXT. ELEVATION MATERIALS LEGEND (CONTINUED)		
CODE	DESCRIPTION	MATERIAL / COLOR
25	JOINT BETWEEN PANELS	
26	MASONRY FIELD	GROUND FACE BLOCK - (COLOR)
27	HAND RAIL	GALVANIZED STEEL
28	POURED CONCRETE STEPS	
29	JAMB TRIM	PRE-FINISHED METAL - (COLOR)
30	PLANTER WALL	GROUND FACE BLOCK - (COLOR)
31	GROUND FACE CMU ELOC CAP	GROUND FACE BLOCK - (COLOR)
32	JOINT IN CMU WITH INSERTED METAL STUD	METAL STUD EVERY 6" (5 BLOCKS) ALONG WALL
33	HORIZONTAL CORRUGATED SIDING	PRE-FINISHED METAL - (COLOR)
34	SCREEN WALL	GROUND FACE BLOCK - (COLOR)
35	PLANTER BASE	PRECAST CONCRETE - (COLOR)
36	GRANITE VENEER PANELS	FLAMED FINISH - COLOR - FRESH WATER PEARL

EXT. ELEVATION MATERIALS LEGEND (CONTINUED)		
CODE	DESCRIPTION	MATERIAL / COLOR
37	ELEVATOR MACHINE ROOM STAIR AND RAILING	GALVANIZED STEEL
38	CONDENSER ENCLOSURE WITH GATE	GALV. STL. 2" TUBE FRM W/2X2 GALV. STL. MESH
39	EXTERIOR DOOR	INSULATED STEEL - PAINTED FINISH
40	PORCH GUARD	GALV. STL. 2" TUBE FRM W/2X2 GALV. STL. MESH
41	BOLLARD	CONCRETE FILLED STEEL - PAINTED
42	GAS METERS	
43	ELEVATOR SHAFT LOUVER	PAINTED FINISH
44	MECHANICAL LOUVER	PAINTED FINISH
45	ELECTRIC METERS	
46	COLUMN PROTECTION 32" HIGH MIN	4" X 4" X 5/16" GALVANIZED STEEL ANGLE
47	BACK SPLICE JOINT ALIGN WITH ACCENT FLASHING	1/4" REVEAL AT BACK SPLICE
48	BALCONY BRACKETS	SEE STRUCTURAL DRAWINGS



© 2005 TFH ARCHITECTS

CHESTNUT STREET LOFTS
 URBAN REVITALIZATION PROJECT
 BY CHESTNUT STREET LLC.
 PORTLAND, MAINE

TFH ARCHITECTS
 100 COMMERCIAL STREET
 PORTLAND MAINE 04101
 TELEPHONE 207 775 6141
 ARCHITECTURE PLANNING

CONSULTANTS:

DESI
 Lead User Consultants
 355 North End
 Portland ME 04107
 207 674 5114

STRUCTURAL
 Structural Design Consulting
 22 Everett Drive
 Old Orchard Beach, ME 04054
 207 834 4444

MECHANICAL
 M. E. & S. Engineers
 11 South Hill
 Portland ME 04101
 207 474 7449

ELECTRICAL
 Bennett Engineering
 7 Bennett Road
 Freeport ME 04032
 207 485 6074

REVISIONS:

100% CONSTRUCTION DOCUMENTS
 04/21/08

DATE:
PROJECT No: 0422
DRAWN BY: RJS
CHECKED BY: TST
SCALE: AS NOTED

SHEET TITLE:
ELEVATIONS

A2.0

T:\02_Tier Projects\02_Chestnut Street\Construction Documents\03-Exterior\03-2005\03-23-05.dwg, 1/11/2005 10:02:00 AM, Design: TFC



© 2005 TFH ARCHITECTS

CHESTNUT STREET LOFTS
 URBAN REVITALIZATION PROJECT
 BY CHESTNUT STREET LLC,
 PORTLAND, MAINE



TFH ARCHITECTS
 100 COMMERCIAL STREET
 PORTLAND MAINE 04101
 TELEPHONE 207 776 6141
 ARCHITECTURE PLANNING

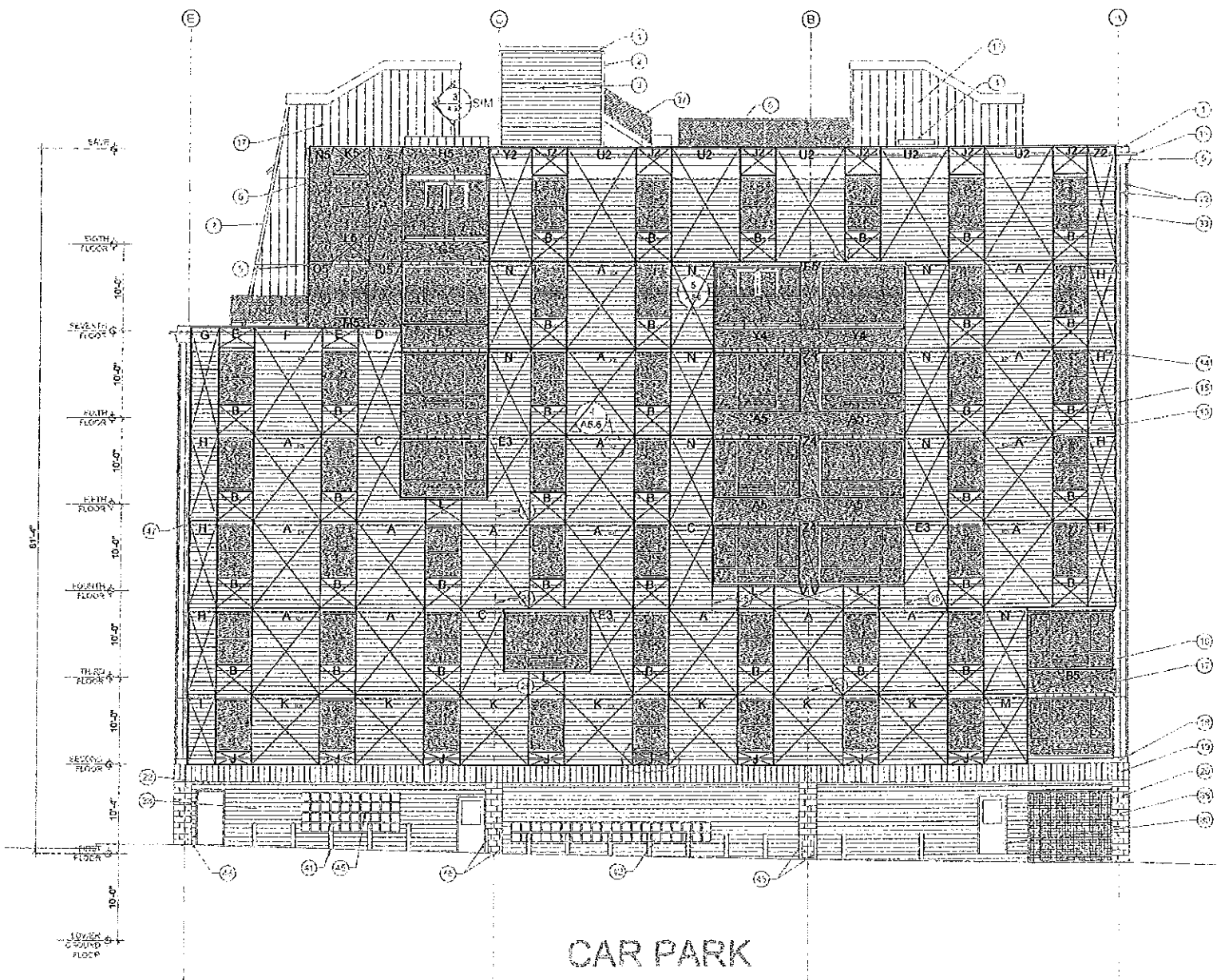
CONSULTANTS
 Civil
 Land Use Consultants
 685 Franklin Street
 Portland, ME 04103
 207-624-8333
 Structural
 Structural Design Consulting
 21 Oxford Street
 Portland, ME 04101
 207-854-6128
 Mechanical
 Wilson Engineering
 10 Oxford Street
 Portland, ME 04101
 207-474-4181
 Electrical
 Bennett Engineering
 7 Bayview Road
 Bangor, ME 04401
 207-938-6100

REVISIONS
 1. 100% ECHO PRELIM FOR DOOR APERTURE
 2. 12.21.05

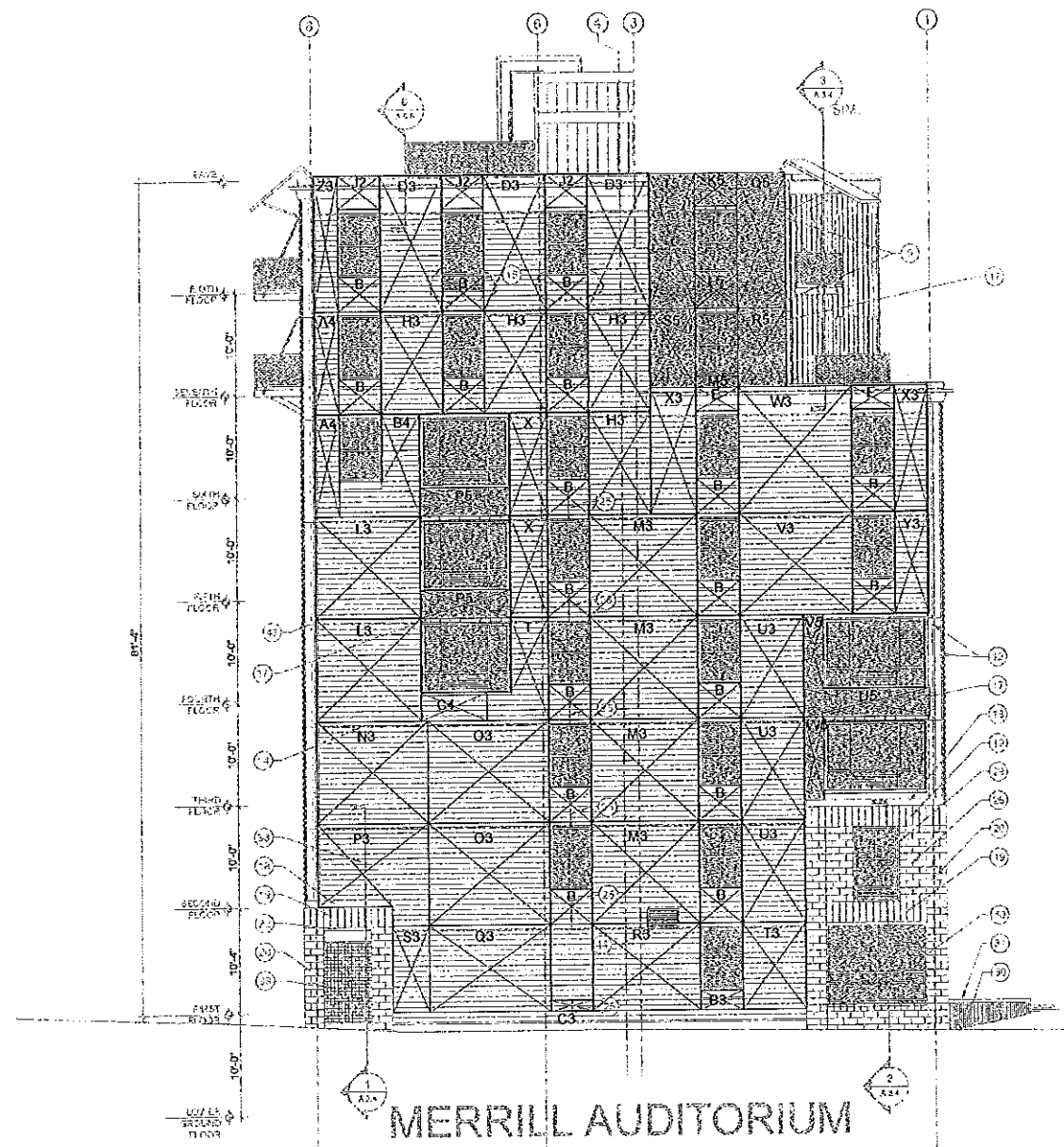
DATE:
 PROJECT No: 0422
 DRAWN BY: RJS
 CHECKED BY: TST
 SCALE: AS NOTED

SHEET TITLE:
**THERMASTRUCT.
 PANEL
 ELEVATIONS**

A2.3



1 EAST ELEVATION WALL PANELS
 1/2" = 1'-0"



2 NORTH ELEVATION WALL PANELS
 1/8" = 1'-0"

PANEL ELEVATION NOTES:
 1. PANELS SHOWN ARE A SCHEMATIC LAYOUT
 2. PANEL MANUFACTURER TO PROVIDE SHOP DRAWINGS FOR ALL PANELS, CONNECTIONS, ETC.
 3. PANELS TO BE 5-1/2" THICKNESS
 4. SHADED PANELS TO BE 3-1/2" THICKNESS AS INDICATED BY