



© 2005 TFH ARCHITECTS

CHESTNUT STREET LOFTS

URBAN REVITALIZATION PROJECT
BY CHESTNUT STREET LLC.
PORTLAND, MAINE



TFH ARCHITECTS
100 COMMERCIAL STREET
PORTLAND, MAINE 04101
TELEPHONE 207 776 6141
ARCHITECTURE PLANNING

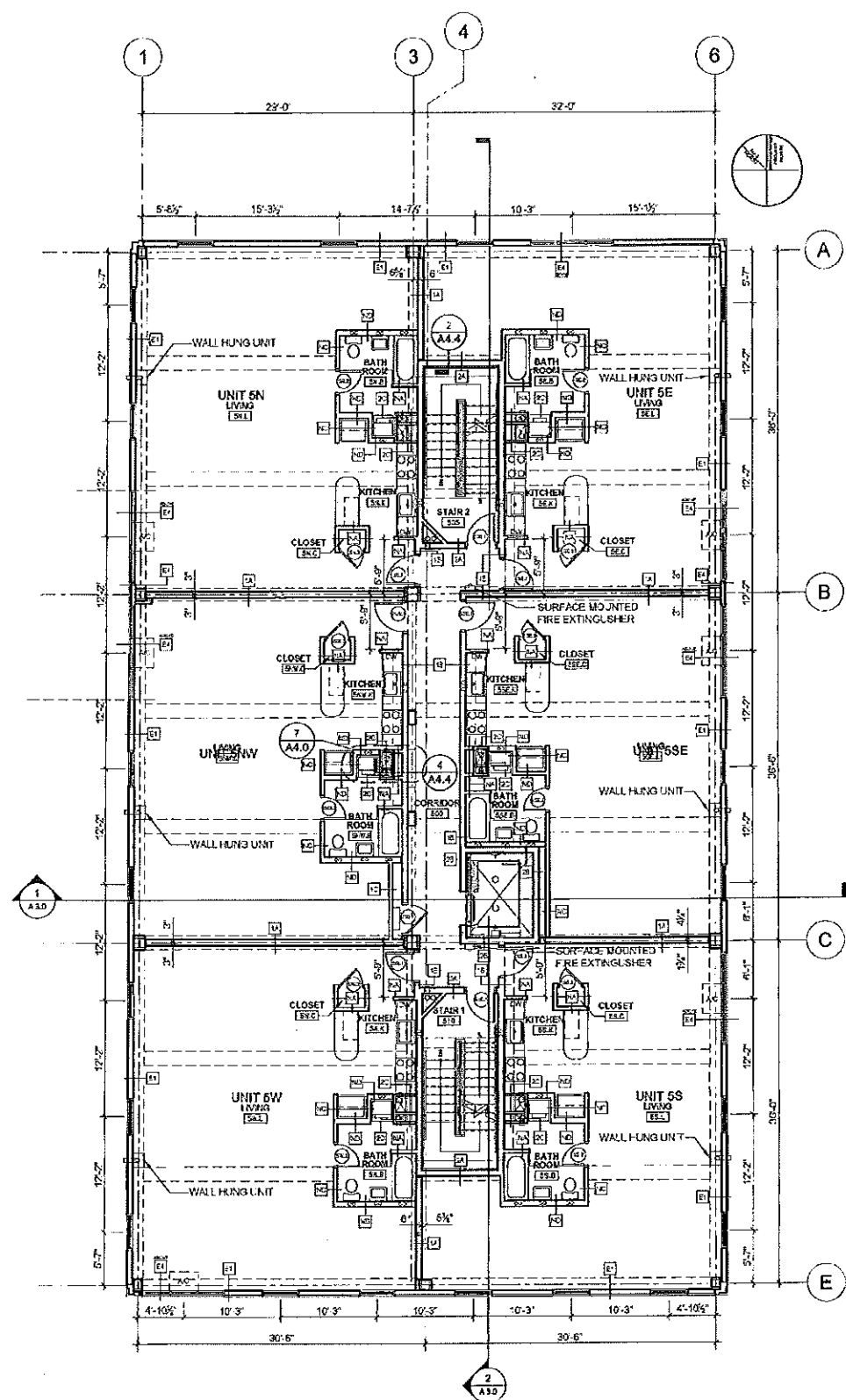
CONSULTANTS:
ENGINEER
T. Scott Teas
96 Bowdoin Street
Portland, ME 04103
207 478 9513
ARCHITECT
TFH ARCHITECTS
100 Commercial Street
Portland, ME 04101
207 776 6141
GENERAL CONTRACTOR
Chestnut Street LLC
7 Bowdoin Street
Portland, ME 04103
207 439 6079

REVISIONS
1 100% CONSTRUCTION DOCUMENTS
2 2/24/05

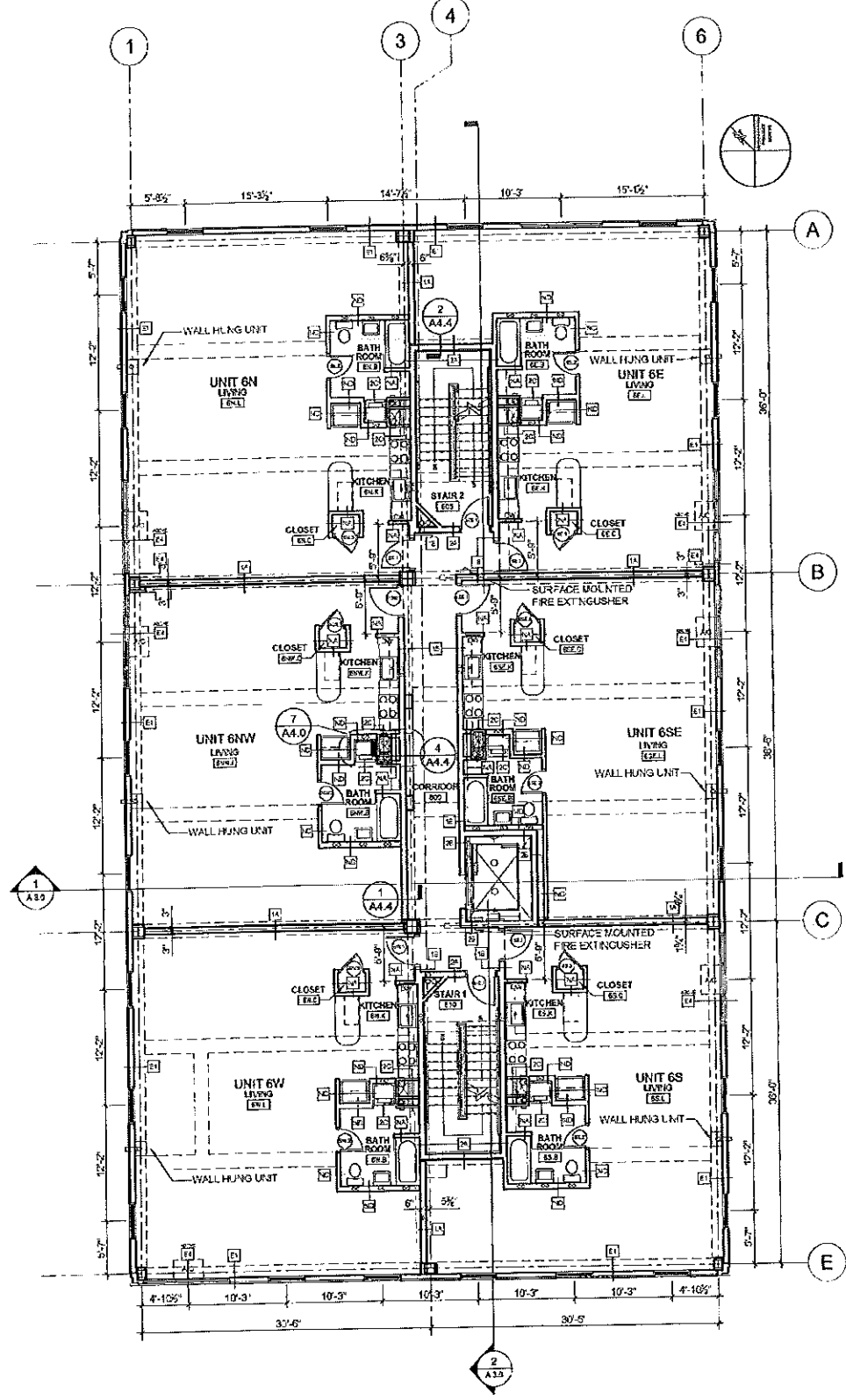
DATE:
PROJECT No. 0422
DRAWN BY RJS
CHECKED BY TBT
SCALE: AS NOTED

SHEET TITLE
FIFTH AND SIXTH FLOOR PLANS

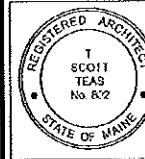
A1.3



1 FIFTH FLOOR PLAN
1/8" = 1'-0"



2 SIXTH FLOOR PLAN
1/8" = 1'-0"



© 2015 TFH ARCHITECTS

CHESTNUT STREET LOFTS
 URBAN REVITALIZATION PROJECT
 BY CHESTNUT STREET LLC,
 PORTLAND, MAINE

TFH ARCHITECTS
 100 COMMERCIAL STREET
 PORTLAND MAINE 04101
 TELEPHONE 207 778 6141
 ARCHITECTURE PLANNING

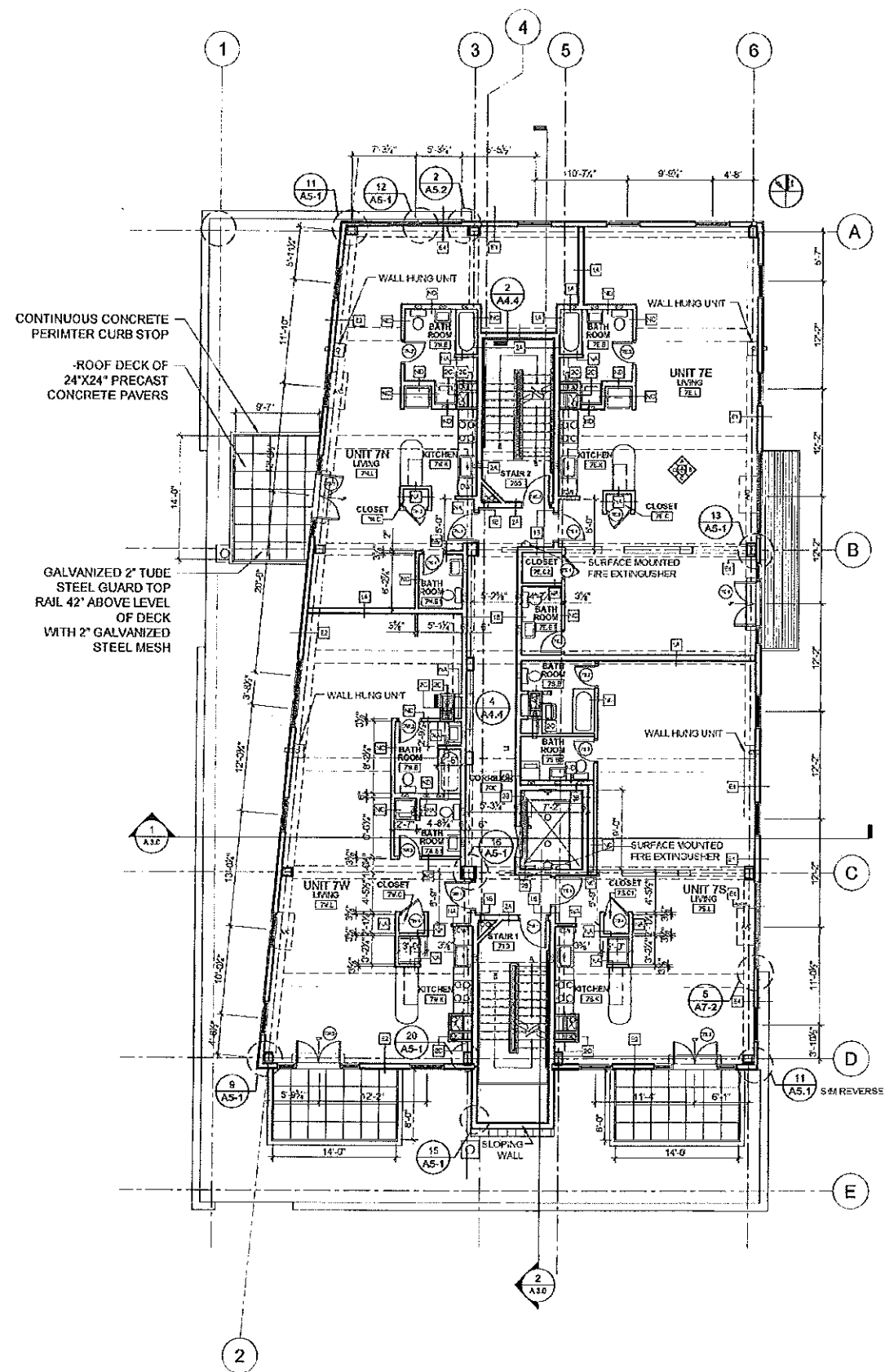
CONSULTANTS
ENGINEER:
 L&D CONSULTANTS
 100 Commercial Street
 Portland ME 04101
 207 778 6141
STRUCTURAL:
 Structural Design Consulting
 22 Commercial Street
 Portland ME 04101
 207 778 6141
Mechanical:
 Whaley Engineering
 10 Dunbar Street
 Portland ME 04101
 207 474 4143
ELECTRICAL:
 Electric Engineering
 7 Bland Street
 Portland ME 04101
 207 495 6495

REVISIONS
 2 100% CONSTRUCTION DOCUMENTS
 2/24/16

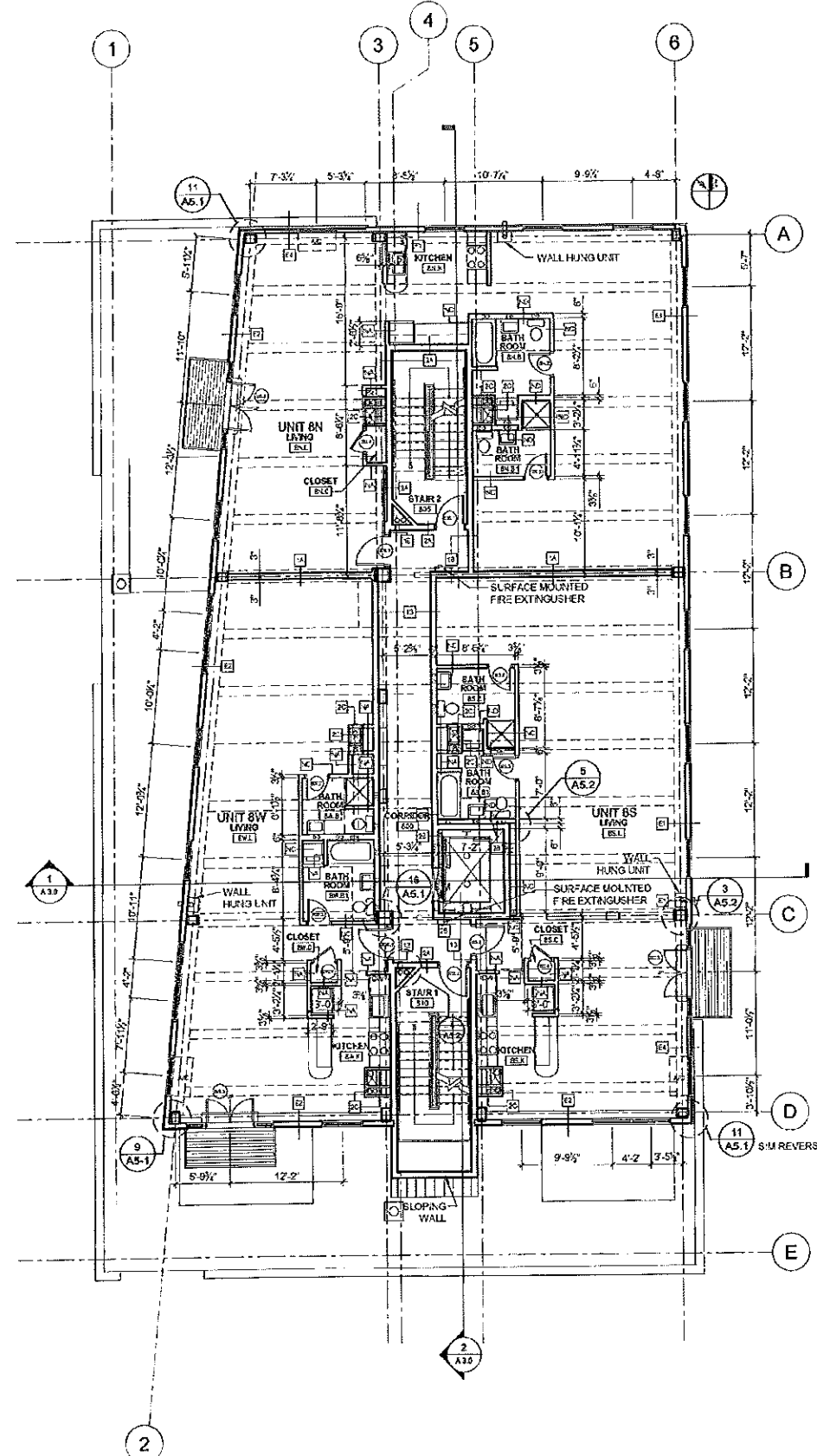
DATE:
PROJECT No: 0422
DRAWN BY: RJS
CHECKED BY: TST
SCALE: AS NOTED

SHEET TITLE:
 SEVENTH AND EIGHTH FLOOR PLANS

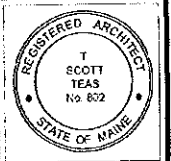
A1.4



1 SEVENTH FLOOR PLAN
 A1.4 1/8" = 1'-0"



2 EIGHTH FLOOR PLAN
 A1.4 1/8" = 1'-0"



© 2005 TFH ARCHITECTS

CHESTNUT STREET LOFTS
URBAN REVITALIZATION PROJECT
BY CHESTNUT STREET LLC,
PORTLAND, MAINE.

TFH ARCHITECTS
100 COMMERCIAL STREET
PORTLAND MAINE 04101
TELEPHONE 207 776 6141
ARCHITECTURE PLANNING

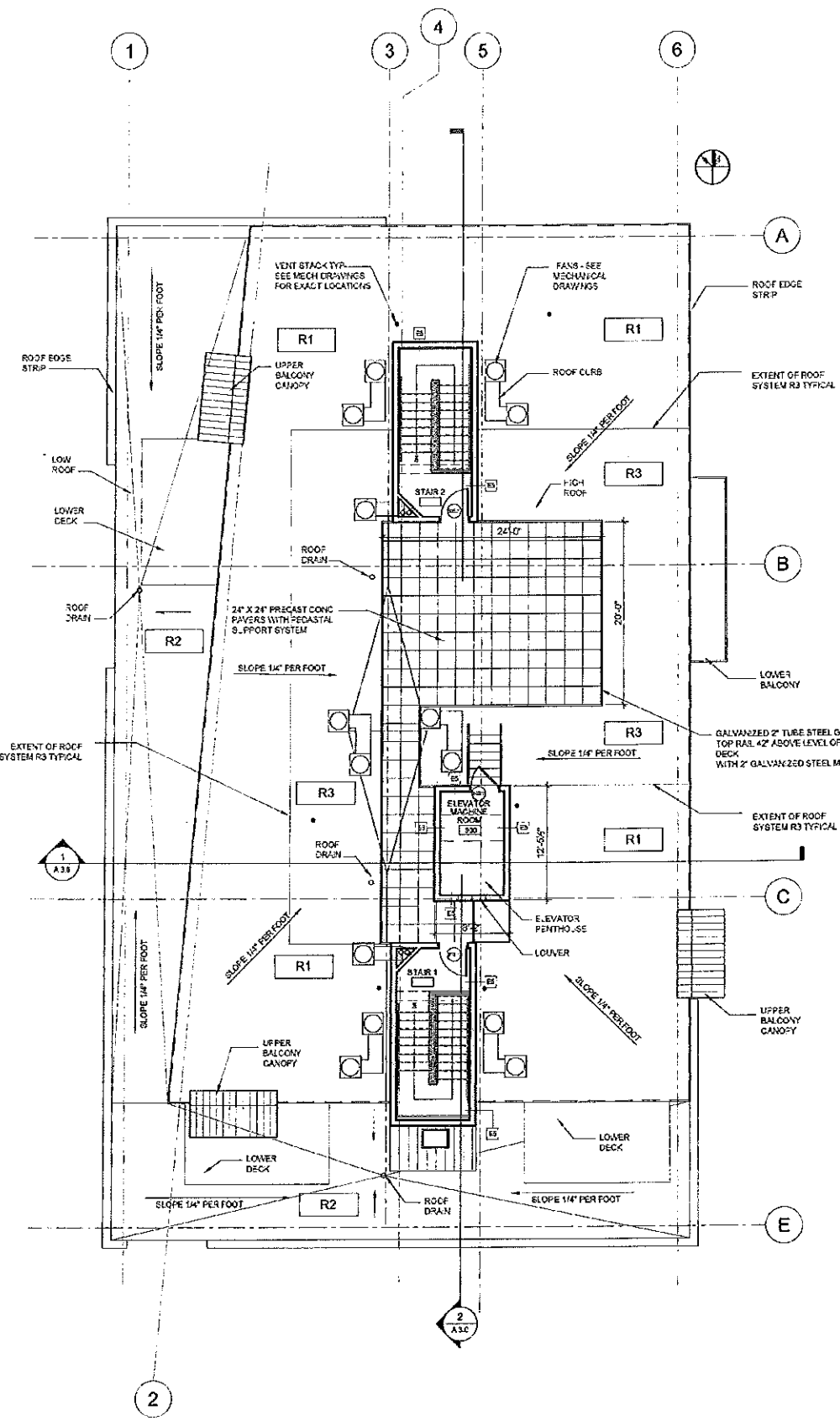
CONSULTANTS:
URS
URS One Corporation
600 Riverside Street
Portland, ME 04103
207 776 6141
STRICKLAND
Structural Design Consulting
22 Commercial Drive
Portland, ME 04103
207 776 6141
MECHANICAL
Murray Engineering
10 Deering Road
Portland, ME 04103
207 776 6141
ELECTRICAL
Sennett Engineering
7 Bunker Road
Portland, ME 04103
207 776 6141

REVISIONS
2. 100% CONSTRUCTION DOCUMENTS

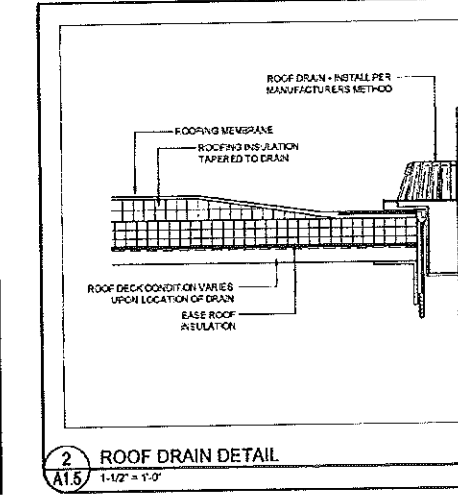
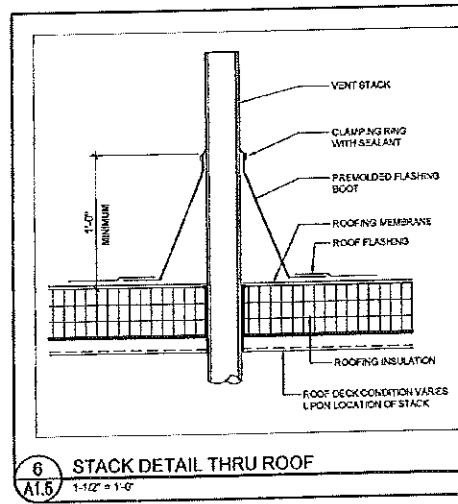
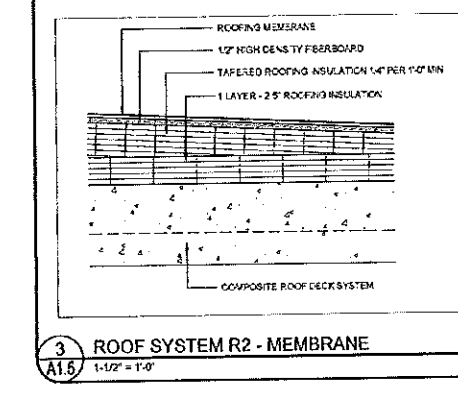
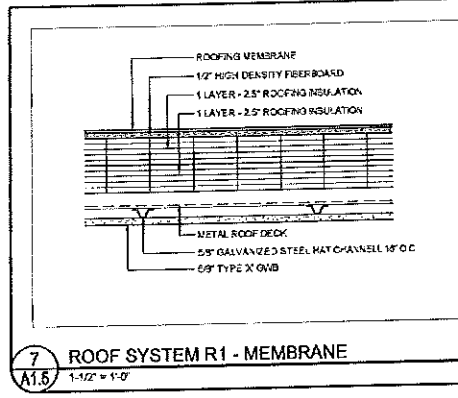
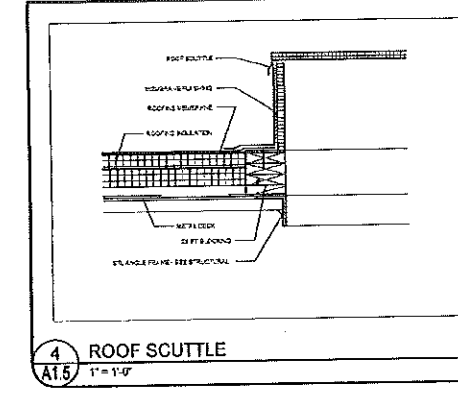
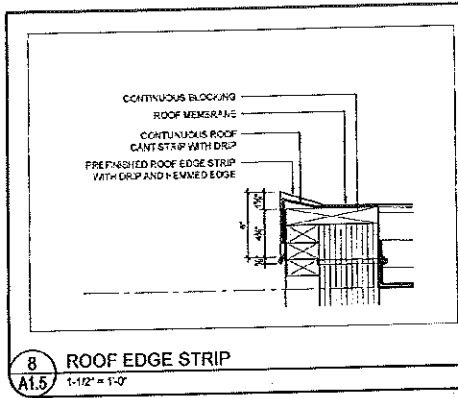
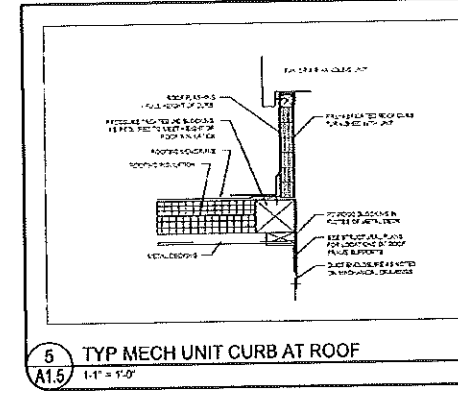
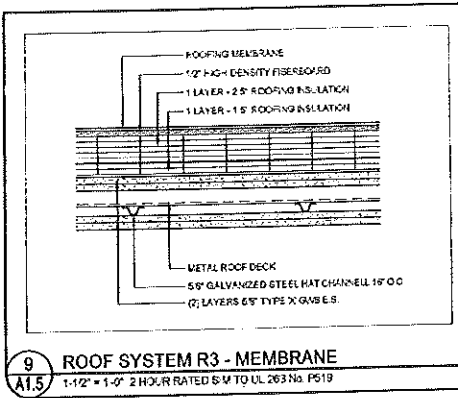
DATE:
PROJECT No 0422
DRAWN BY: RJS
CHECKED BY: TST
SCALE AS NOTED

SHEET TITLE:
ROOF PLAN AND DETAILS

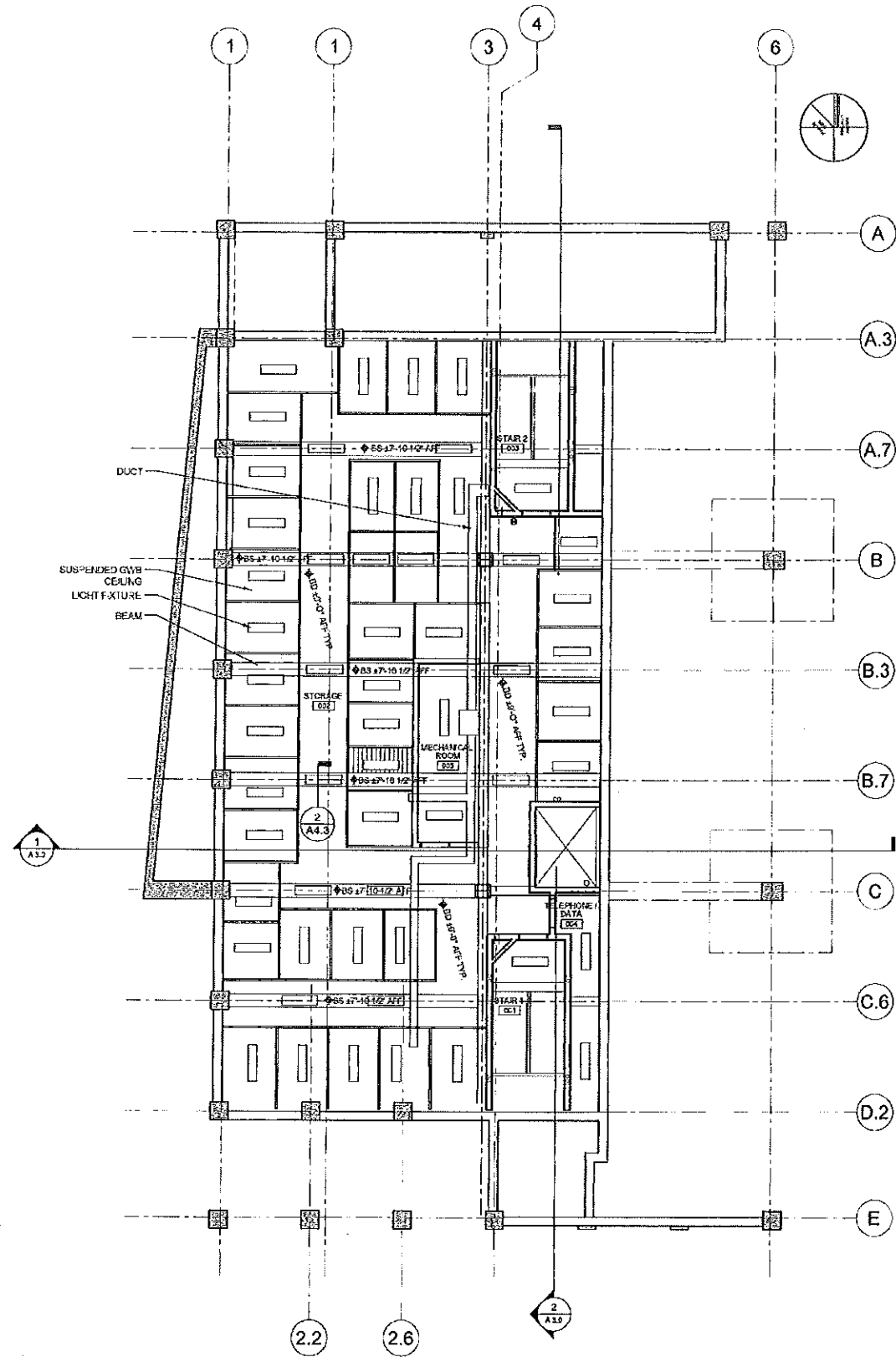
A1.5



1
A1.5
ROOF PLAN
1/8" = 1'-0"



152_TFH Proj\152_ChestnutStreetLofts\Drawings\152_Basement\152_Basement Reflected Ceiling Plan.rvt



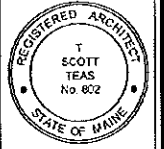
**REFLECTED CEILING PLAN
NOTES AND LEGEND**

- GENERAL RCP NOTES:**
- 1) 88 = BOTTOM OF SOFFIT
 - 2) 83 = BOTTOM OF SUSPENDED GYR CEILING
 - 3) LIGHT FIXTURES SHOWN
 - 4) STRUCTURAL BEAM DEPTHS VARY BY LOCATION. SOFFITS TO BE BUILT TO ELEVATIONS AS INDICATED ON REFLECTED CEILING PLANS.

GVR SOR HI

NOTE:
 SUSPENDED GYR CEILING TO BE
 3/4" GYR BOARD
 SUSPENDED METAL GRD
 2" FATT INSULATION
 W/FS W/EXPOSED VIBRATION ISOLATOR HANGER

1
A1.6 BASEMENT REFLECTED CEILING PLAN
 1/8" = 1'-0"



© 2005 TFH ARCHITECTS

CHESTNUT STREET LOFTS
 URBAN REVITALIZATION PROJECT
 BY CHESTNUT STREET LLC.
 PORTLAND, MAINE

TFH ARCHITECTS
 100 COMMERCIAL STREET
 PORTLAND MAINE 04101
 TELEPHONE 207 775 6141
 ARCHITECTURE PLANNING

CONSULTANTS:

ENVIRONMENTAL:
 Land Use Consultants
 400 New Street
 Portland ME 04101
 207 875 3115

STRUCTURAL:
 Structural Design Consulting
 21 Commercial
 Old Orchard Beach, ME 04094
 207 884 4215

METALLIC:
 Metalway Engineering
 7 Commercial Street
 Portland ME 04101
 207 875 1142

ELECTRICAL:
 Bennett Engineering
 2 Berwick Road
 Portland ME 04106
 207 885 4116

REVISIONS:

2. 100% GVR PLAN FOR SUBMITTAL
 10/24/05

DATE:

PROJECT No: 0422

DRAWN BY: RJS

CHECKED BY: TST

SCALE: AS NOTED

SHEET TITLE:
 BASEMENT
 REFLECTED
 CEILING PLAN

A1.6

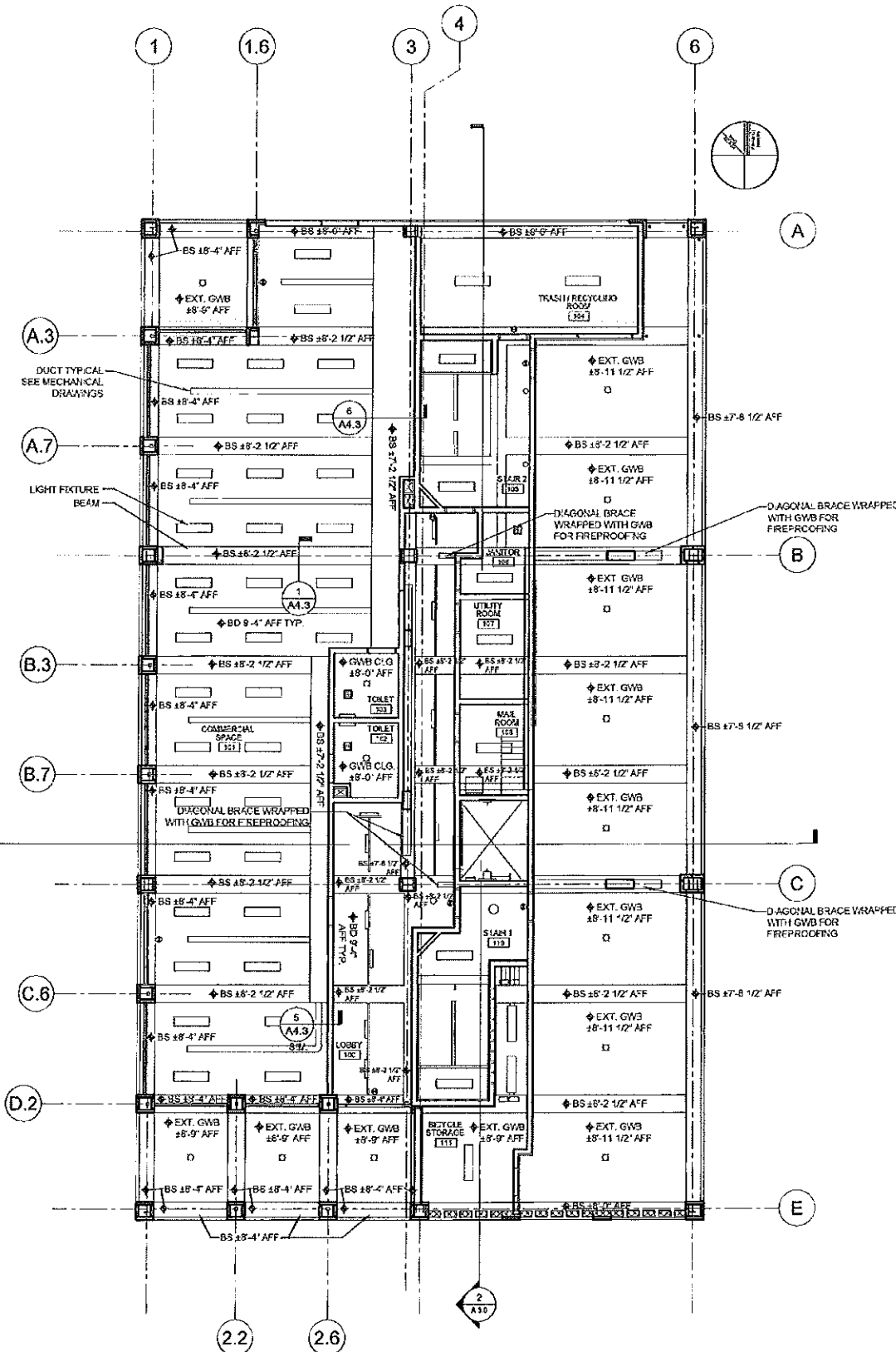
T:\02_171_Pelvic\02_Chestnut Street\Construction Documents\01_Plan\A1.7_01_Rev.dwg, 2022/05/23/09:27 AM, HP Design/IT: T000.Plan.17.A1.7.dwg

**REFLECTED CEILING PLAN
NOTES AND LEGEND**

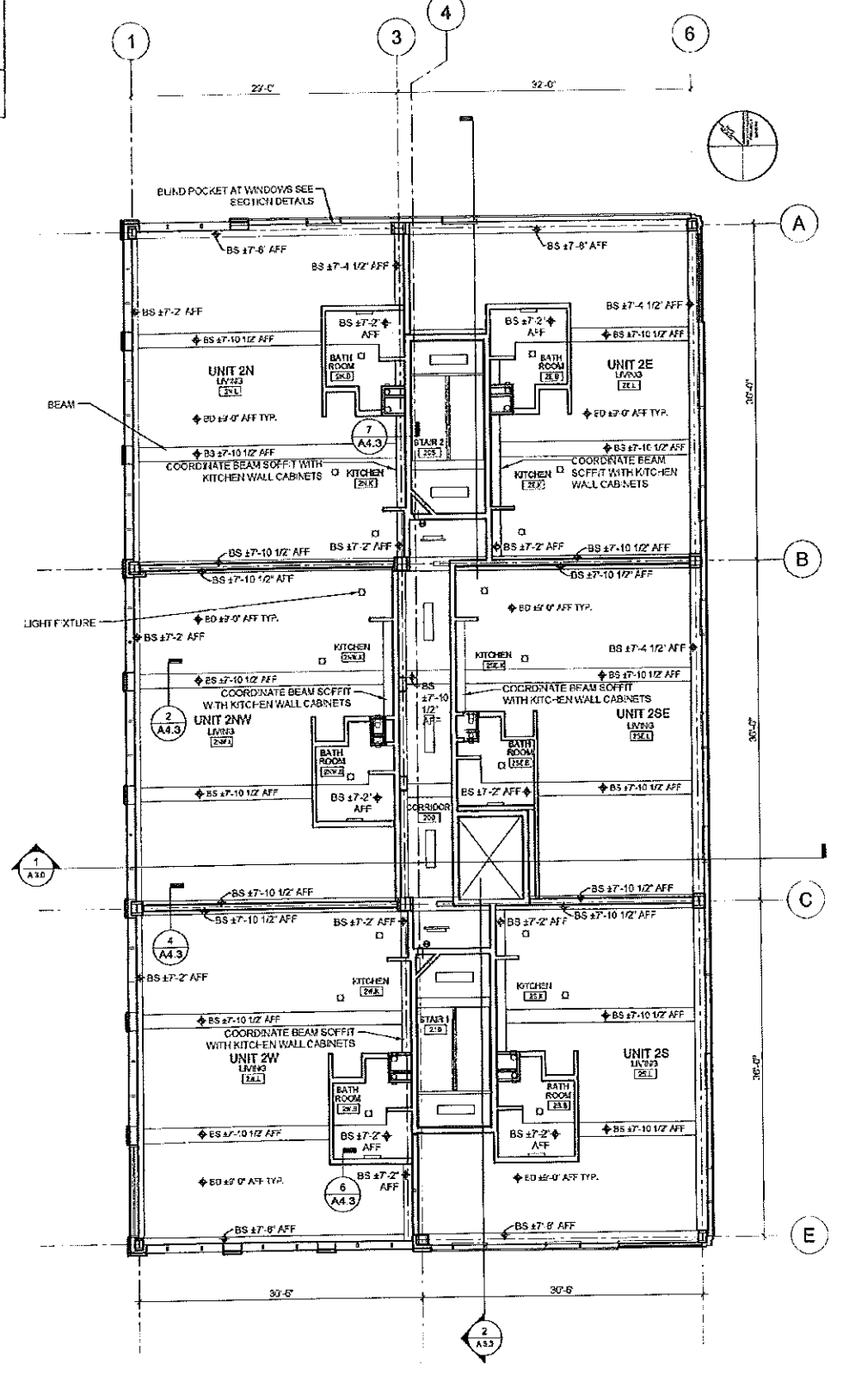
- GENERAL RCP NOTES:**
 1) BS = BOTTOM OF SOFFIT
 2) BD = BOTTOM OF SUSPENDED GWB CEILING
 3) LIGHT FIXTURES SHOWN
 4) STRUCTURAL BEAM DEPTHS VARY BY LOCATION
 SOFFITS TO BE BUILT TO ELEVATIONS AS INDICATED ON REFLECTED CEILING PLANS

	GWB SOFFIT
--	------------

NOTE:
 SUSPENDED GYP CEILINGS TO BE:
 1/2" GYP BOARD
 SUSPENDED METAL GRID
 5" BATT INSULATION
 WRG/NEOPRENE VIBRATION ISOLATOR HANGERS



1
A1.7
FIRST FLOOR REFLECTED CEILING PLAN
1/8" = 1'-0"



2
A1.7
SECOND FLOOR REFLECTED CEILING PLAN
1/8" = 1'-0"



© 2025 TFH ARCHITECTS

CHESTNUT STREET LOFTS
 URBAN REVITALIZATION PROJECT
 BY CHESTNUT STREET LLC.
 PORTLAND, MAINE



TFH ARCHITECTS
 103 COMMERCIAL STREET
 PORTLAND MAINE 04101
 TELEPHONE 207 775 6111
 ARCHITECTURE PLANNING

CONSULTANTS:
Paul and the Associates
 103 Commercial Street
 Portland, ME 04101
 207 775 6111

Portland Design Consulting
 103 Commercial Street
 Portland, ME 04101
 207 775 6111

MECHANICAL
Wolcott Engineering
 103 Commercial Street
 Portland, ME 04101
 207 775 6111

ELECTRICAL
Wolcott Engineering
 103 Commercial Street
 Portland, ME 04101
 207 775 6111

REVISIONS:
 1. 100% CONSTRUCTION DOCUMENTS
 2. 2/22/24

DATE: _____
 PROJECT No: 0422
 DRAWN BY: RJS
 CHECKED BY: TST
 SCALE: AS NOTED

SHEET TITLE:
FIRST AND SECOND FLOOR REFLECTED CEILING PLANS

A1.7