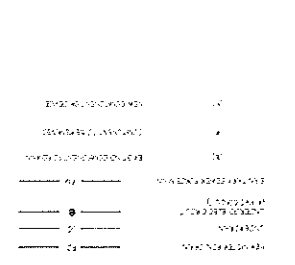
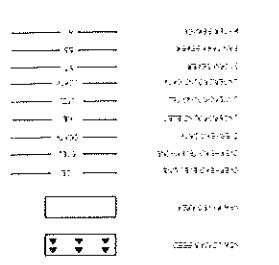
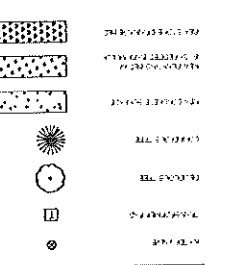
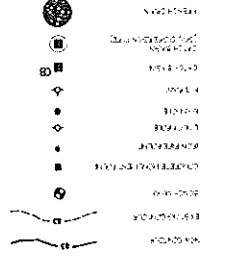
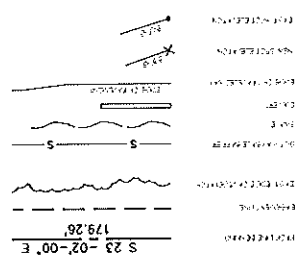


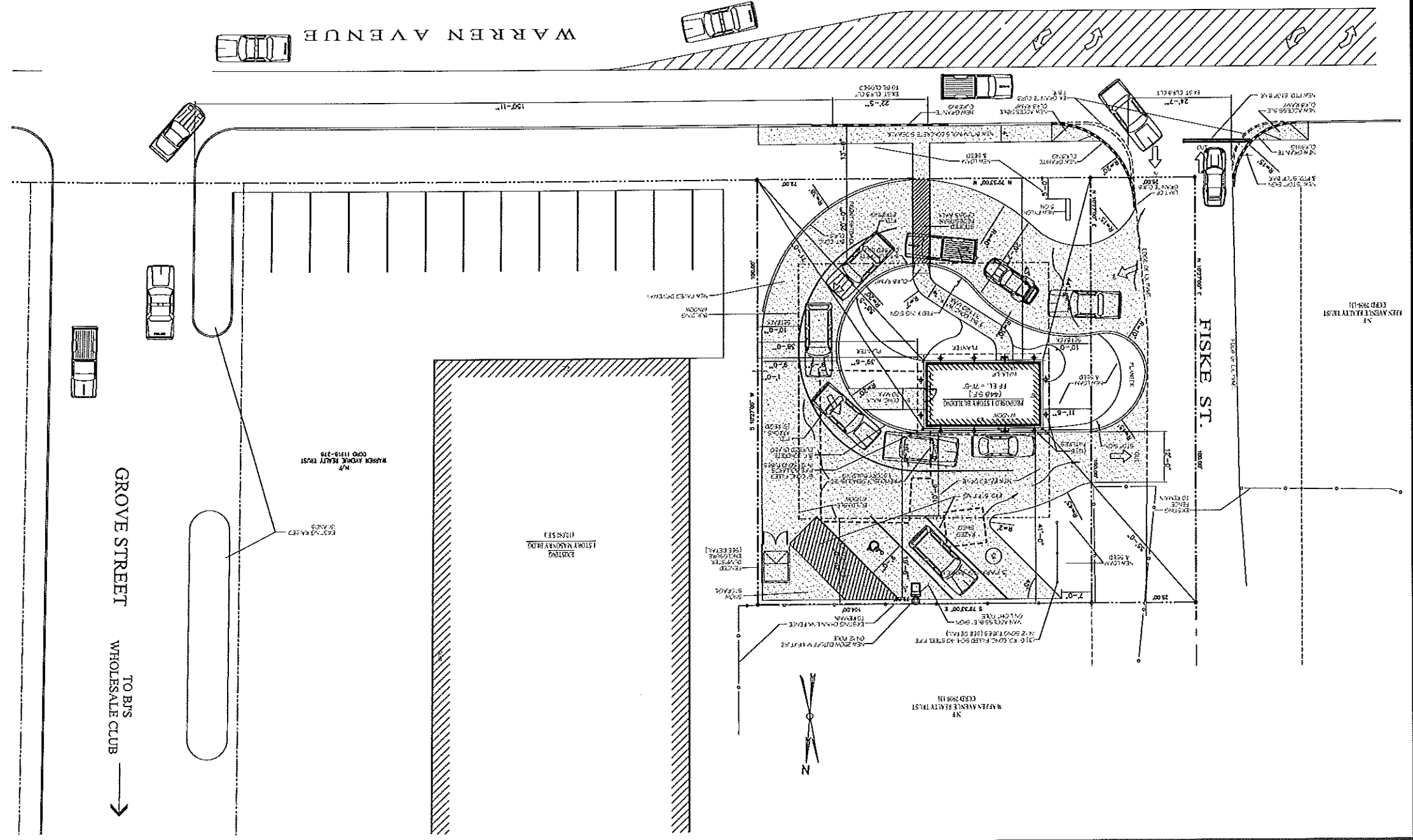
THIS PLAN IS THE PROPERTY OF DAVID D. LEASURE - ARCHITECTURAL ASSOCIATES, INC. AND IS NOT TO BE REPRODUCED OR TRANSMITTED IN ANY FORM OR BY ANY MEANS, ELECTRONIC OR MECHANICAL, INCLUDING PHOTOCOPYING, RECORDING, OR BY ANY INFORMATION STORAGE AND RETRIEVAL SYSTEM, WITHOUT THE WRITTEN PERMISSION OF DAVID D. LEASURE - ARCHITECTURAL ASSOCIATES, INC.

GENERAL NOTES



SITE LEGEND

SITE LAYOUT PLAN
1" = 10'-0"



DAVID D. LEASURE - ARCHITECTURAL ASSOCIATES, INC.
1344 WASHINGTON AVENUE PORTLAND, MAINE
PROJECT NO. 013002 PROJECT TITLE: DRIVE-THRU COFFEE SHOP
SCALE: 1" = 10'-0" SHEET TITLE: SITE LAYOUT PLAN

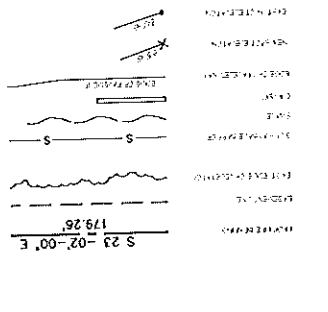
NO.	REVISION
1	ISSUED FOR PERMIT
2	ISSUED FOR CONSTRUCTION
3	ISSUED FOR CONSTRUCTION
4	ISSUED FOR CONSTRUCTION
5	ISSUED FOR CONSTRUCTION
6	ISSUED FOR CONSTRUCTION
7	ISSUED FOR CONSTRUCTION
8	ISSUED FOR CONSTRUCTION
9	ISSUED FOR CONSTRUCTION
10	ISSUED FOR CONSTRUCTION



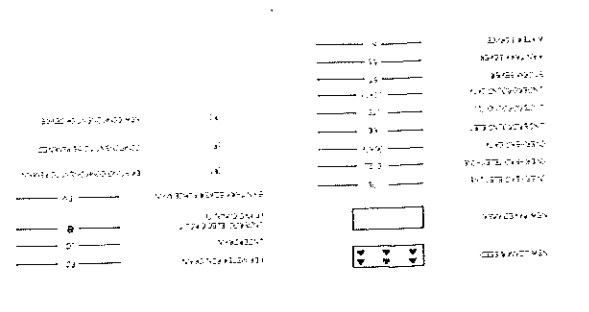
REL. FOR CONSTRUCTION - OCTOBER 21, 2002
DRIVE-THRU COFFEE SHOP FOR
BELLINGHAM COFFEE
519 WARREN AVENUE
PORTLAND, MAINE
C-200 R2

LANDSCAPING LEGEND

- A. PLANTING - TREES
- B. PLANTING - SHRUBS
- C. PLANTING - PERENNIALS
- D. PLANTING - ANNUALS
- E. PLANTING - GRASSES
- F. PLANTING - BULBS
- G. PLANTING - PALMS
- H. PLANTING - VINES
- I. PLANTING - WILDOILS
- J. PLANTING - ROCKS
- K. PLANTING - WATER
- L. PLANTING - LIGHTING
- M. PLANTING - FURNITURE
- N. PLANTING - SIGNAGE
- O. PLANTING - OTHER



SITE LEGEND



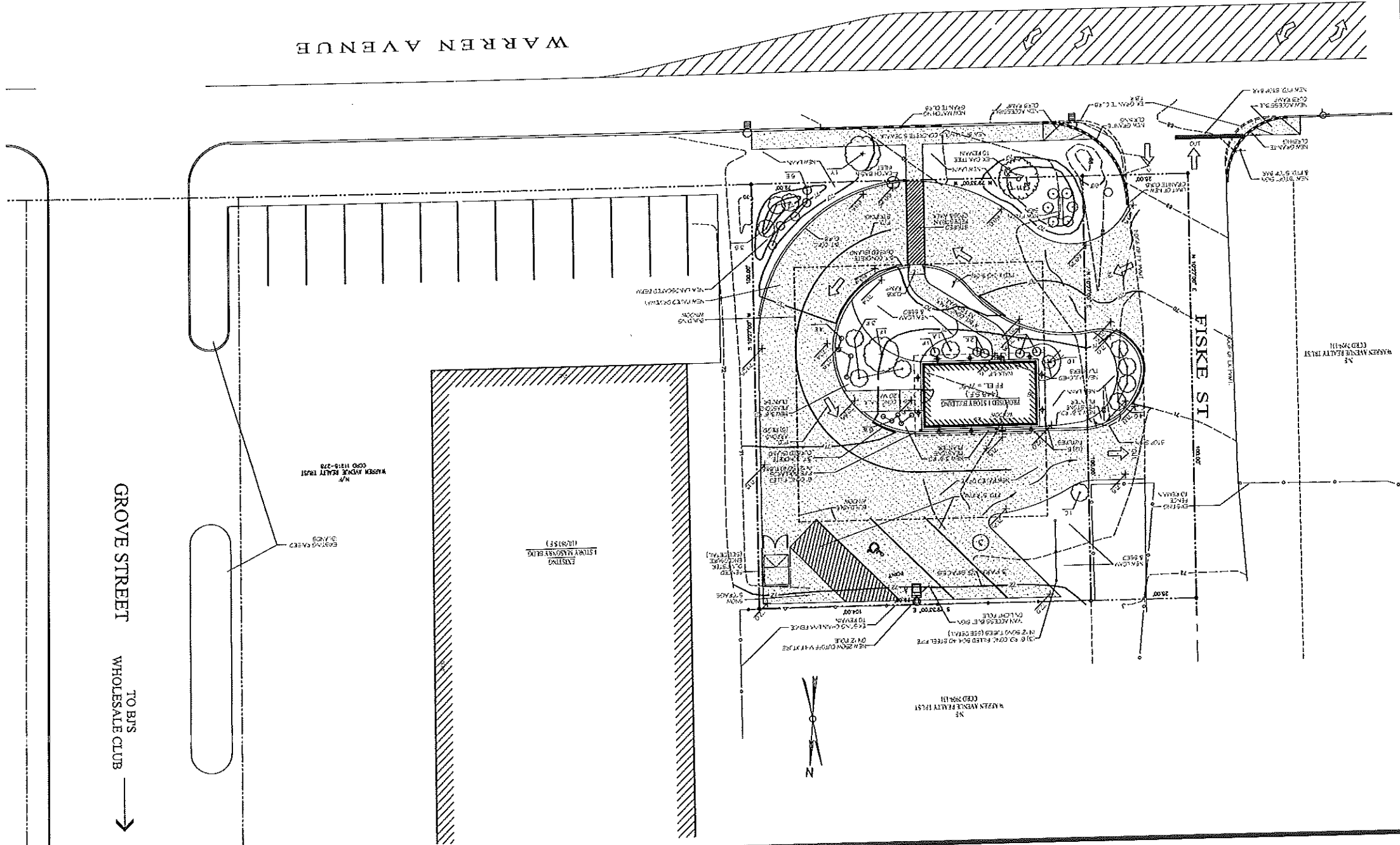
SITE LANDSCAPING & TOPOGRAPHY PLAN
 1" = 10'-0"

GENERAL NOTES

REL. FOR CONSTRUCTION - OCTOBER 21, 2002

DAVID D. LEASURE - ARCHITECTURAL ASSOCIATES INC.
 1344 WASHINGTON AVENUE PORTLAND, MAINE PH. (207) 797-8661 FAX (207) 797-5533
 PROJECT NO. 013002 PROJECT TITLE: DRIVE-THRU COFFEE SHOP
 SCALE: 1" = 10'-0" SHEET TITLE: SITE LANDSCAPING & TOPOGRAPHY PLAN

NO.	REVISION	DATE
1	ISSUED FOR PERMIT	10/21/02
2	ISSUED FOR CONSTRUCTION	10/21/02
3	ISSUED FOR CONSTRUCTION	10/21/02
4	ISSUED FOR CONSTRUCTION	10/21/02
5	ISSUED FOR CONSTRUCTION	10/21/02
6	ISSUED FOR CONSTRUCTION	10/21/02
7	ISSUED FOR CONSTRUCTION	10/21/02
8	ISSUED FOR CONSTRUCTION	10/21/02
9	ISSUED FOR CONSTRUCTION	10/21/02
10	ISSUED FOR CONSTRUCTION	10/21/02

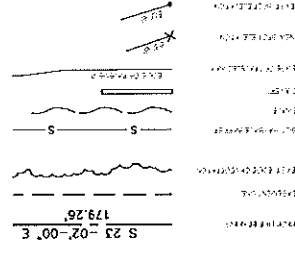


DRIVE-THRU COFFEE SHOP FOR
 BELLINGHAM COFFEE
 519 WARREN AVENUE
 PORTLAND, MAINE
C-201 R2

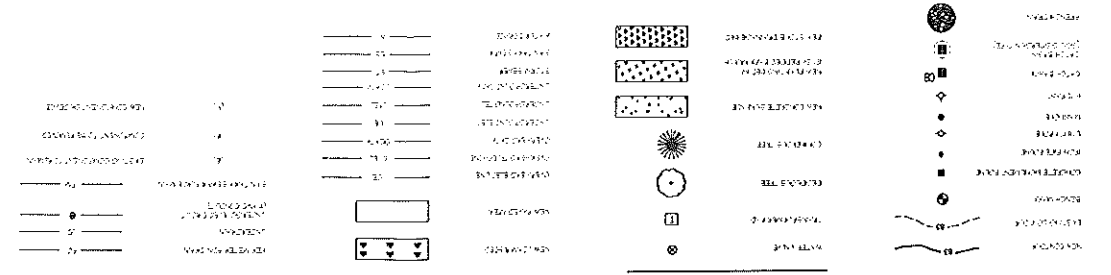
A
 REVISION: P.L.D. 2001 11/14/02
 AREA: 10,000 SQ. FT. (APPROX.)
 CONTRACT NO. 013002
 DATE: 10/21/02

B
 REVISION: P.L.D. 2001 11/14/02
 AREA: 10,000 SQ. FT. (APPROX.)
 CONTRACT NO. 013002
 DATE: 10/21/02

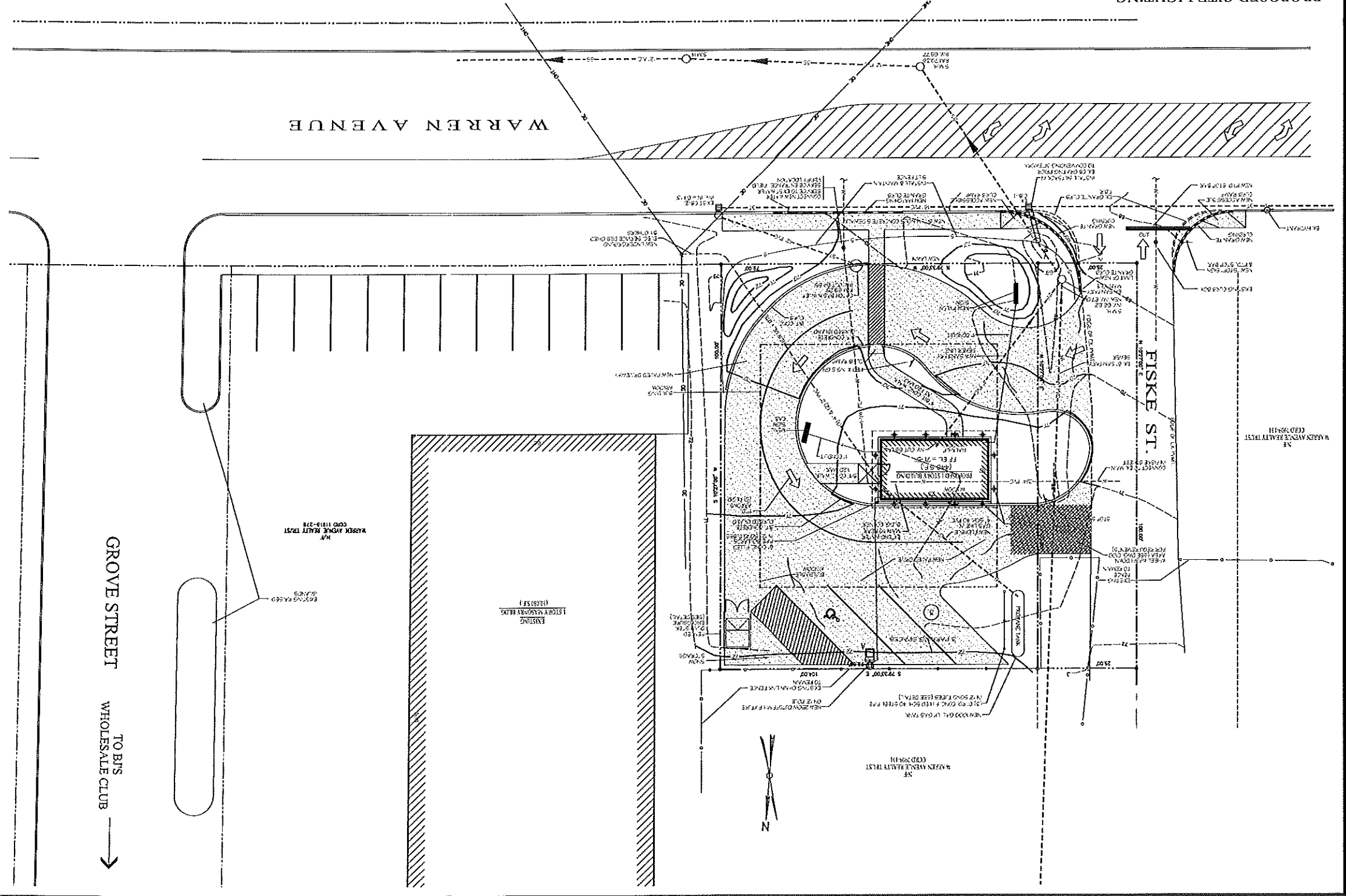
PROPOSED SITE LIGHTING



SITE LEGEND



SITE UTILITY & EROSION CONTROL PLAN
 1" = 10'-0"



GENERAL NOTES

SEE PLAN 013002 FOR EROSION CONTROL PLAN, NOTES 1-10, 12-15, AND 17-22 FOR EROSION CONTROL PLAN

DRIVE THRU COFFEE SHOP FOR
 BELLINGHAM COFFEE
 319 WARREN AVENUE
 PORTLAND, MAINE
C-202 R2

REL. FOR CONSTRUCTION - OCTOBER 21, 2002

DAVID D. LEASURE - ARCHITECTURAL ASSOCIATES INC.
 1344 WASHINGTON AVENUE PORTLAND, MAINE
 PROJECT NO. 013002 PROJECT TITLE: DRIVE-THRU COFFEE SHOP
 SCALE: 1" = 10'-0" SHEET TITLE: SITE UTILITY & EROSION CONTROL PLAN

NO.	REVISION	DATE
1	ISSUED FOR PERMIT	10/21/02
2	FOR CONSTRUCTION	10/21/02

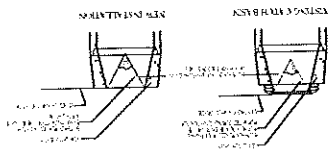


GROVE STREET TO BIS WHOLESALE CLUB →

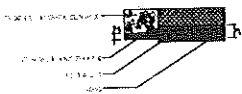
THIS SHEET IS TO BE USED IN CONJUNCTION WITH THE GENERAL NOTES AND SPECIFICATIONS. ALL MATERIALS AND METHODS OF CONSTRUCTION SHALL BE AS NOTED OR AS SHOWN.

SITE DETAILS
AS NOTED

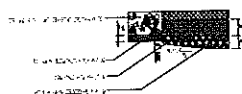
CATCH BASIN PROTECTION DETAIL (SITSKR)
NOT TO SCALE



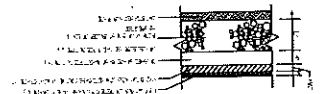
SECTION THRU EDGE OF PAVEMENT AT GRASS
NOT TO SCALE



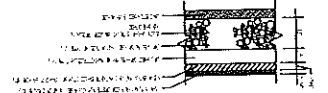
SECTION THRU EDGE OF PAVEMENT AT PLANTER
NOT TO SCALE



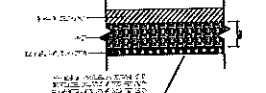
WALKWAY PAVEMENT DETAIL
NOT TO SCALE



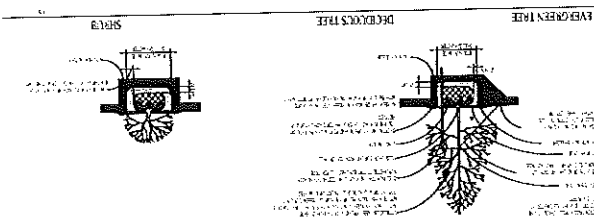
DRIVEWAY PAVEMENT DETAIL
NOT TO SCALE



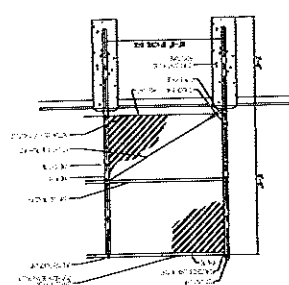
LOAM AND SEED DETAIL
NOT TO SCALE



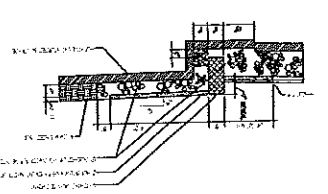
PLANTING & SHRUBBERY DETAIL
NOT TO SCALE



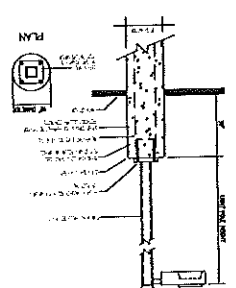
DUMPSTER ENCLOSURE DETAIL
NOT TO SCALE



GRANITE CURB & SIDEWALK DETAIL
NOT TO SCALE



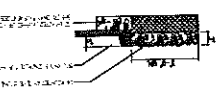
PARKING LOT LIGHT POLE BASE
NOT TO SCALE



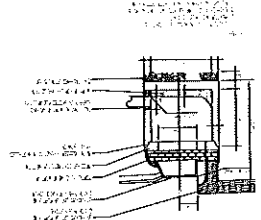
TYPICAL DRIP EDGE DETAIL
NOT TO SCALE



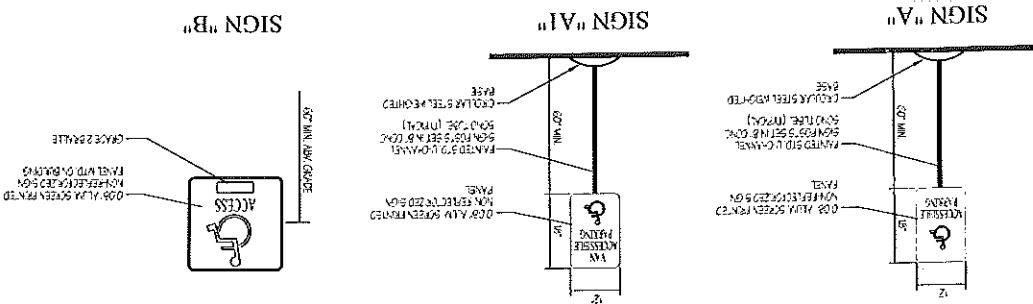
SECTION THRU EDGE OF PAVEMENT AT STONE
NOT TO SCALE



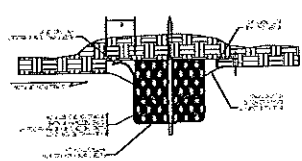
CATCH BASIN INLET DETAIL
NOT TO SCALE



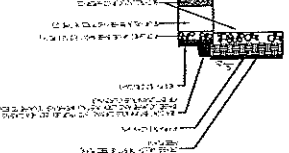
TYPICAL ACCESSIBLE SIGNAGE DETAILS
NOT TO SCALE



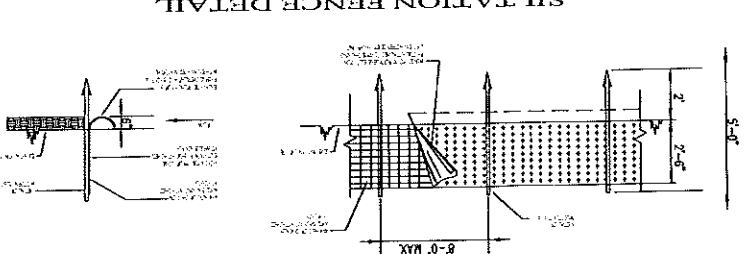
TYPICAL STRAW BALE EROSION BARRIER
NOT TO SCALE



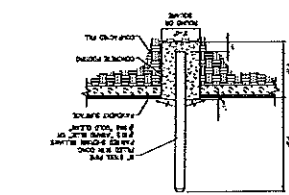
SECTION THRU CURBED ISLAND
NOT TO SCALE



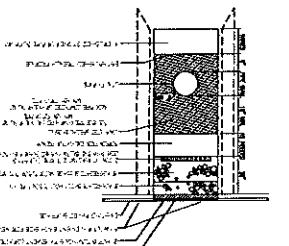
SILTATION FENCE DETAIL
NOT TO SCALE



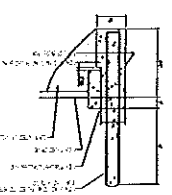
TYPICAL GUARD BOLLARD
NOT TO SCALE



PUBLIC RIGHT OF WAY TRENCH DETAIL
NOT TO SCALE



STEEL BOLLARD DETAIL
NOT TO SCALE



REL. FOR CONSTRUCTION - OCTOBER 21, 2002
DRIVE-THRU COFFEE SHOP FOR
BELLINGHAM COFFEE
519 WARREN AVENUE
PORTLAND, MAINE
C-203 R2

DAVID D. LEASURE - ARCHITECTURAL ASSOCIATES INC.
134 WASHINGTON AVENUE PORTLAND, MAINE
PROJECT NO. 013002 PROJECT TITLE: DRIVE-THRU COFFEE SHOP
SCALE: AS NOTED SHEET TITLE: SITE DETAILS
PH. (207) 797-8661 FAX (207) 797-8533

NO.	DESCRIPTION	DATE
01	GENERAL NOTES	10/21/02
02	CONCRETE	10/21/02
03	ASPHALT	10/21/02
04	GRAVEL	10/21/02
05	SAND	10/21/02
06	GEOTEXTILE	10/21/02
07	PLANTING	10/21/02
08	SHRUBBERY	10/21/02
09	STREET LIGHTS	10/21/02
10	TRAFFIC SIGNALS	10/21/02
11	STREET FURNITURE	10/21/02
12	LANDSCAPE ARCHITECTURE	10/21/02
13	CONSTRUCTION	10/21/02



1	GENERAL NOTES
2	SEE ARCHITECTURAL SPECIFICATIONS FOR MATERIALS AND FINISHES
3	SEE MECHANICAL AND ELECTRICAL PLANS FOR ALL MECHANICAL AND ELECTRICAL EQUIPMENT
4	SEE STRUCTURAL PLANS FOR ALL STRUCTURAL REQUIREMENTS
5	SEE CIVIL PLANS FOR ALL CIVIL REQUIREMENTS
6	SEE LUMINAIRE SCHEDULE FOR ALL LIGHTING FIXTURES
7	SEE SCHEDULE OF FINISHES FOR ALL FINISHES
8	SEE SCHEDULE OF DOORS AND WINDOWS FOR ALL DOORS AND WINDOWS
9	SEE SCHEDULE OF FIXTURES FOR ALL FIXTURES
10	SEE SCHEDULE OF EQUIPMENT FOR ALL EQUIPMENT
11	SEE SCHEDULE OF FURNITURE FOR ALL FURNITURE
12	SEE SCHEDULE OF CASES FOR ALL CASES
13	SEE SCHEDULE OF APPLIANCES FOR ALL APPLIANCES
14	SEE SCHEDULE OF MACHINERY FOR ALL MACHINERY
15	SEE SCHEDULE OF SPECIALTY ITEMS FOR ALL SPECIALTY ITEMS
16	SEE SCHEDULE OF ACCESSORIES FOR ALL ACCESSORIES
17	SEE SCHEDULE OF FINISHES FOR ALL FINISHES
18	SEE SCHEDULE OF DOORS AND WINDOWS FOR ALL DOORS AND WINDOWS
19	SEE SCHEDULE OF FIXTURES FOR ALL FIXTURES
20	SEE SCHEDULE OF EQUIPMENT FOR ALL EQUIPMENT
21	SEE SCHEDULE OF FURNITURE FOR ALL FURNITURE
22	SEE SCHEDULE OF CASES FOR ALL CASES
23	SEE SCHEDULE OF APPLIANCES FOR ALL APPLIANCES
24	SEE SCHEDULE OF MACHINERY FOR ALL MACHINERY
25	SEE SCHEDULE OF SPECIALTY ITEMS FOR ALL SPECIALTY ITEMS
26	SEE SCHEDULE OF ACCESSORIES FOR ALL ACCESSORIES
27	SEE SCHEDULE OF FINISHES FOR ALL FINISHES
28	SEE SCHEDULE OF DOORS AND WINDOWS FOR ALL DOORS AND WINDOWS
29	SEE SCHEDULE OF FIXTURES FOR ALL FIXTURES
30	SEE SCHEDULE OF EQUIPMENT FOR ALL EQUIPMENT
31	SEE SCHEDULE OF FURNITURE FOR ALL FURNITURE
32	SEE SCHEDULE OF CASES FOR ALL CASES
33	SEE SCHEDULE OF APPLIANCES FOR ALL APPLIANCES
34	SEE SCHEDULE OF MACHINERY FOR ALL MACHINERY
35	SEE SCHEDULE OF SPECIALTY ITEMS FOR ALL SPECIALTY ITEMS
36	SEE SCHEDULE OF ACCESSORIES FOR ALL ACCESSORIES
37	SEE SCHEDULE OF FINISHES FOR ALL FINISHES
38	SEE SCHEDULE OF DOORS AND WINDOWS FOR ALL DOORS AND WINDOWS
39	SEE SCHEDULE OF FIXTURES FOR ALL FIXTURES
40	SEE SCHEDULE OF EQUIPMENT FOR ALL EQUIPMENT
41	SEE SCHEDULE OF FURNITURE FOR ALL FURNITURE
42	SEE SCHEDULE OF CASES FOR ALL CASES
43	SEE SCHEDULE OF APPLIANCES FOR ALL APPLIANCES
44	SEE SCHEDULE OF MACHINERY FOR ALL MACHINERY
45	SEE SCHEDULE OF SPECIALTY ITEMS FOR ALL SPECIALTY ITEMS
46	SEE SCHEDULE OF ACCESSORIES FOR ALL ACCESSORIES
47	SEE SCHEDULE OF FINISHES FOR ALL FINISHES
48	SEE SCHEDULE OF DOORS AND WINDOWS FOR ALL DOORS AND WINDOWS
49	SEE SCHEDULE OF FIXTURES FOR ALL FIXTURES
50	SEE SCHEDULE OF EQUIPMENT FOR ALL EQUIPMENT
51	SEE SCHEDULE OF FURNITURE FOR ALL FURNITURE
52	SEE SCHEDULE OF CASES FOR ALL CASES
53	SEE SCHEDULE OF APPLIANCES FOR ALL APPLIANCES
54	SEE SCHEDULE OF MACHINERY FOR ALL MACHINERY
55	SEE SCHEDULE OF SPECIALTY ITEMS FOR ALL SPECIALTY ITEMS
56	SEE SCHEDULE OF ACCESSORIES FOR ALL ACCESSORIES
57	SEE SCHEDULE OF FINISHES FOR ALL FINISHES
58	SEE SCHEDULE OF DOORS AND WINDOWS FOR ALL DOORS AND WINDOWS
59	SEE SCHEDULE OF FIXTURES FOR ALL FIXTURES
60	SEE SCHEDULE OF EQUIPMENT FOR ALL EQUIPMENT
61	SEE SCHEDULE OF FURNITURE FOR ALL FURNITURE
62	SEE SCHEDULE OF CASES FOR ALL CASES
63	SEE SCHEDULE OF APPLIANCES FOR ALL APPLIANCES
64	SEE SCHEDULE OF MACHINERY FOR ALL MACHINERY
65	SEE SCHEDULE OF SPECIALTY ITEMS FOR ALL SPECIALTY ITEMS
66	SEE SCHEDULE OF ACCESSORIES FOR ALL ACCESSORIES
67	SEE SCHEDULE OF FINISHES FOR ALL FINISHES
68	SEE SCHEDULE OF DOORS AND WINDOWS FOR ALL DOORS AND WINDOWS
69	SEE SCHEDULE OF FIXTURES FOR ALL FIXTURES
70	SEE SCHEDULE OF EQUIPMENT FOR ALL EQUIPMENT
71	SEE SCHEDULE OF FURNITURE FOR ALL FURNITURE
72	SEE SCHEDULE OF CASES FOR ALL CASES
73	SEE SCHEDULE OF APPLIANCES FOR ALL APPLIANCES
74	SEE SCHEDULE OF MACHINERY FOR ALL MACHINERY
75	SEE SCHEDULE OF SPECIALTY ITEMS FOR ALL SPECIALTY ITEMS
76	SEE SCHEDULE OF ACCESSORIES FOR ALL ACCESSORIES
77	SEE SCHEDULE OF FINISHES FOR ALL FINISHES
78	SEE SCHEDULE OF DOORS AND WINDOWS FOR ALL DOORS AND WINDOWS
79	SEE SCHEDULE OF FIXTURES FOR ALL FIXTURES
80	SEE SCHEDULE OF EQUIPMENT FOR ALL EQUIPMENT
81	SEE SCHEDULE OF FURNITURE FOR ALL FURNITURE
82	SEE SCHEDULE OF CASES FOR ALL CASES
83	SEE SCHEDULE OF APPLIANCES FOR ALL APPLIANCES
84	SEE SCHEDULE OF MACHINERY FOR ALL MACHINERY
85	SEE SCHEDULE OF SPECIALTY ITEMS FOR ALL SPECIALTY ITEMS
86	SEE SCHEDULE OF ACCESSORIES FOR ALL ACCESSORIES
87	SEE SCHEDULE OF FINISHES FOR ALL FINISHES
88	SEE SCHEDULE OF DOORS AND WINDOWS FOR ALL DOORS AND WINDOWS
89	SEE SCHEDULE OF FIXTURES FOR ALL FIXTURES
90	SEE SCHEDULE OF EQUIPMENT FOR ALL EQUIPMENT
91	SEE SCHEDULE OF FURNITURE FOR ALL FURNITURE
92	SEE SCHEDULE OF CASES FOR ALL CASES
93	SEE SCHEDULE OF APPLIANCES FOR ALL APPLIANCES
94	SEE SCHEDULE OF MACHINERY FOR ALL MACHINERY
95	SEE SCHEDULE OF SPECIALTY ITEMS FOR ALL SPECIALTY ITEMS
96	SEE SCHEDULE OF ACCESSORIES FOR ALL ACCESSORIES
97	SEE SCHEDULE OF FINISHES FOR ALL FINISHES
98	SEE SCHEDULE OF DOORS AND WINDOWS FOR ALL DOORS AND WINDOWS
99	SEE SCHEDULE OF FIXTURES FOR ALL FIXTURES
100	SEE SCHEDULE OF EQUIPMENT FOR ALL EQUIPMENT

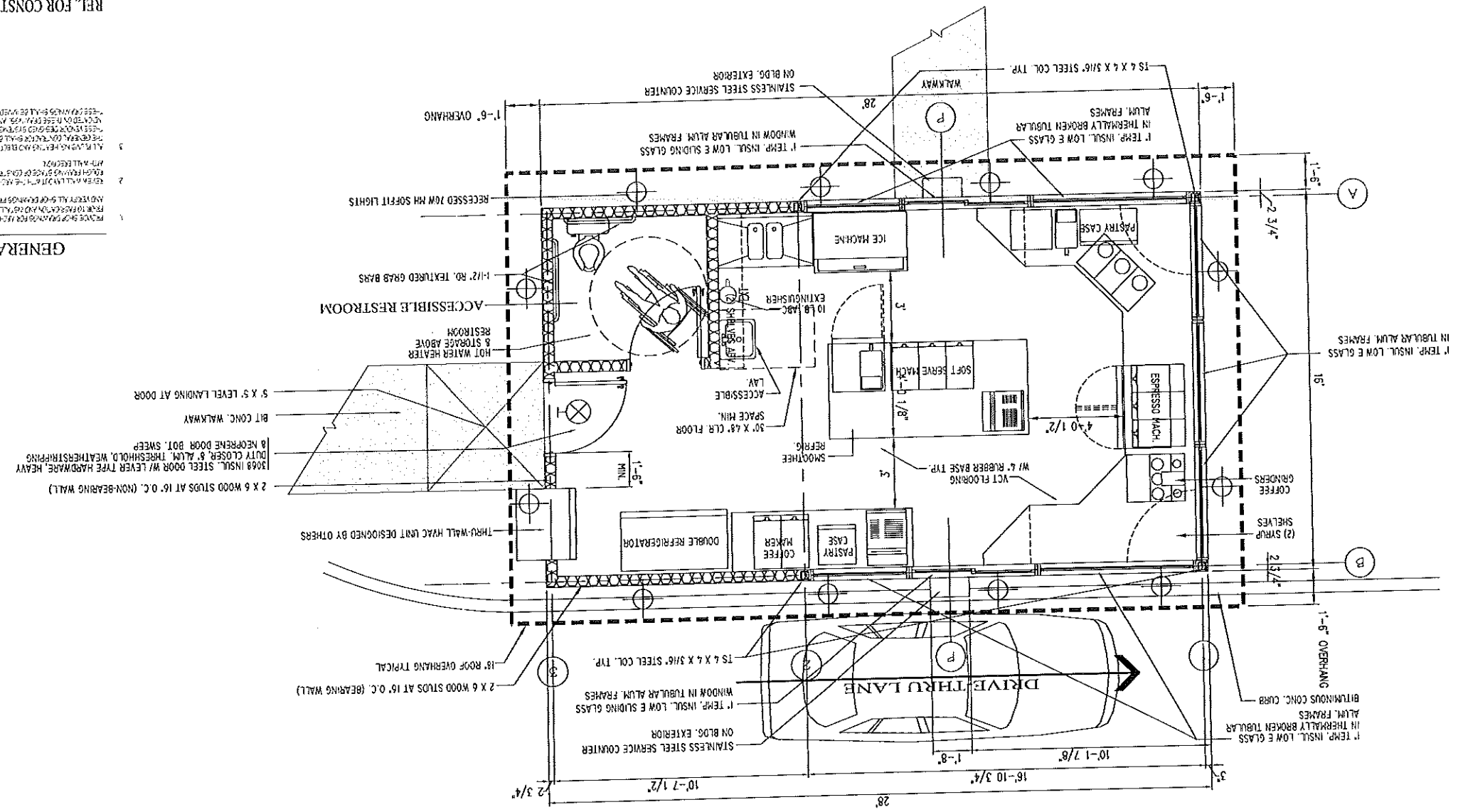


DAVID D. LEASURE - ARCHITECTURAL ASSOCIATES INC.
 1344 WASHINGTON AVENUE PORTLAND, MAINE PH. (207) 797-8661 FAX (207) 797-8533
 PROJECT NO. 013002 PROJECT TITLE DRIVE-THRU COFFEE SHOP
 SCALE: 1/2" = 1'-0" SHEET TITLE FLOOR PLAN - BELLINGHAM COFFEE

REL. FOR CONSTRUCTION - OCT. 21, 2002

BELLINGHAM COFFEE
 519 WARREN AVENUE
 PORTLAND, MAINE
 A-200 R2

FLOOR PLAN
 1/2" = 1'-0"



GENERAL NOTES

- REMOVE SHOP DRAWINGS FOR ALL ITEMS REFERRED TO IN THIS SET OF DRAWINGS. THE GENERAL CONTRACTOR SHALL BE RESPONSIBLE FOR OBTAINING ALL NECESSARY PERMITS AND APPROVALS FROM ALL APPLICABLE AGENCIES.
- VERIFY ALL WORK IS DONE IN ACCORDANCE WITH THE LATEST EDITIONS OF ALL APPLICABLE CODES AND REGULATIONS.
- ALL WORK SHALL BE DONE IN ACCORDANCE WITH THE LATEST EDITIONS OF ALL APPLICABLE CODES AND REGULATIONS.
- THE GENERAL CONTRACTOR SHALL BE RESPONSIBLE FOR OBTAINING ALL NECESSARY PERMITS AND APPROVALS FROM ALL APPLICABLE AGENCIES.
- VERIFY ALL WORK IS DONE IN ACCORDANCE WITH THE LATEST EDITIONS OF ALL APPLICABLE CODES AND REGULATIONS.
- ALL WORK SHALL BE DONE IN ACCORDANCE WITH THE LATEST EDITIONS OF ALL APPLICABLE CODES AND REGULATIONS.

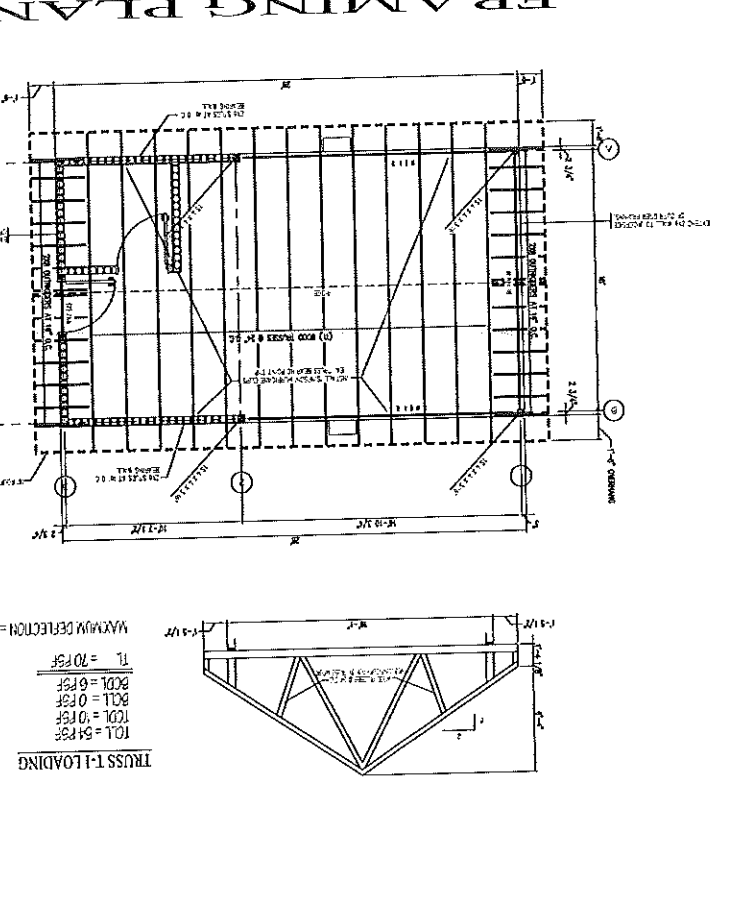
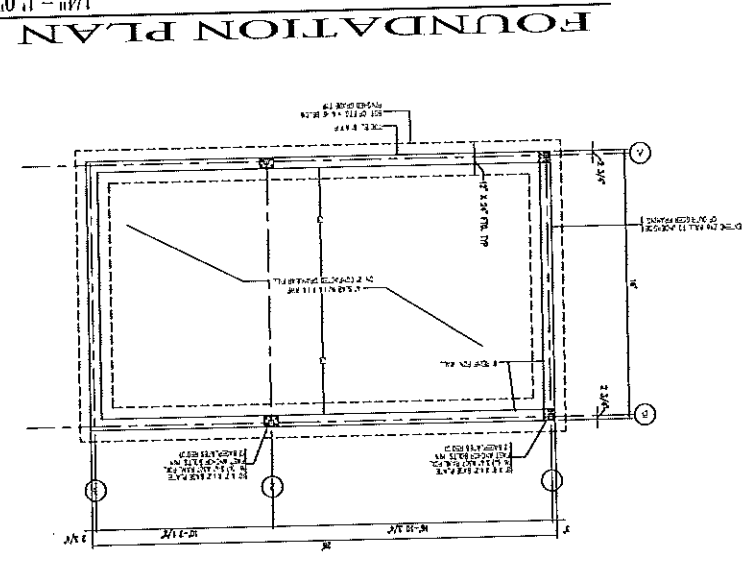
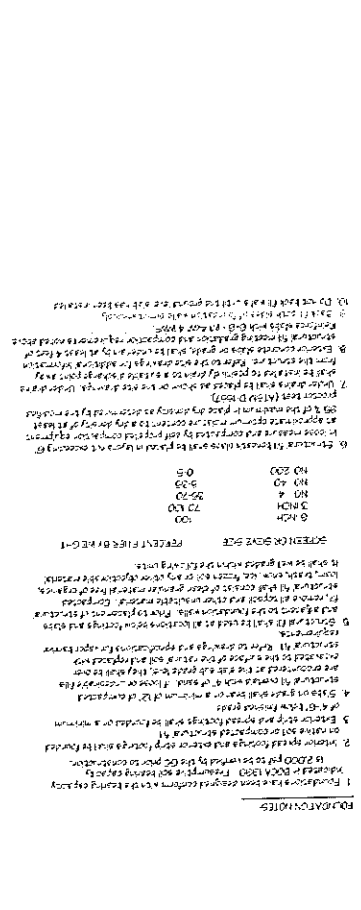
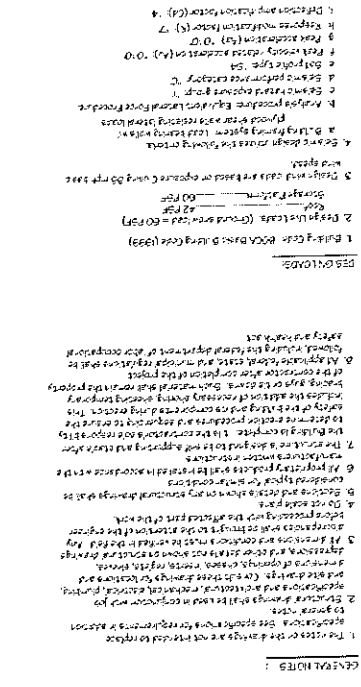


1	DAVID D. LEASURE	ARCHITECT
2	DAVID D. LEASURE	ARCHITECT
3	DAVID D. LEASURE	ARCHITECT
4	DAVID D. LEASURE	ARCHITECT
5	DAVID D. LEASURE	ARCHITECT
6	DAVID D. LEASURE	ARCHITECT
7	DAVID D. LEASURE	ARCHITECT
8	DAVID D. LEASURE	ARCHITECT
9	DAVID D. LEASURE	ARCHITECT
10	DAVID D. LEASURE	ARCHITECT
11	DAVID D. LEASURE	ARCHITECT
12	DAVID D. LEASURE	ARCHITECT
13	DAVID D. LEASURE	ARCHITECT
14	DAVID D. LEASURE	ARCHITECT
15	DAVID D. LEASURE	ARCHITECT
16	DAVID D. LEASURE	ARCHITECT
17	DAVID D. LEASURE	ARCHITECT
18	DAVID D. LEASURE	ARCHITECT
19	DAVID D. LEASURE	ARCHITECT
20	DAVID D. LEASURE	ARCHITECT

DAVID D. LEASURE - ARCHITECTURAL ASSOCIATES INC.
 1344 WASHINGTON AVENUE PORTLAND, MAINE PH: (207) 797-8661 FAX: (207) 797-8533
 PROJECT NO. 013002 PROJECT TITLE: DRIVE THRU COFFEE SHOP
 SCALE: AS NOTED SHEET TITLE: FDN & FRAMING PLANS - BELLINGHAM COFFEE

REL. FOR CONSTRUCTION - OCT. 21, 2002
 BELLINGHAM COFFEE
 DRIVE THRU COFFEE SHOP FOR
 519 WARREN AVENUE
 PORTLAND, MAINE
 ST-200 R2

- CONCRETE NOTES:**
1. All concrete work shall conform to ACI 308 Standard Edition.
 2. Concrete strength at 28 days shall be 3000 PSI for footings, walls, and slabs.
 3. All concrete shall be placed and finished in accordance with the specifications.
 4. Concrete shall be placed in layers not exceeding 4 feet in thickness.
 5. Concrete shall be placed in accordance with the specifications.
 6. Concrete shall be placed in accordance with the specifications.
 7. Concrete shall be placed in accordance with the specifications.
 8. Concrete shall be placed in accordance with the specifications.
 9. Concrete shall be placed in accordance with the specifications.
 10. Concrete shall be placed in accordance with the specifications.
 11. Concrete shall be placed in accordance with the specifications.
 12. Concrete shall be placed in accordance with the specifications.
 13. Concrete shall be placed in accordance with the specifications.
 14. Concrete shall be placed in accordance with the specifications.
 15. Concrete shall be placed in accordance with the specifications.
 16. Concrete shall be placed in accordance with the specifications.
 17. Concrete shall be placed in accordance with the specifications.
 18. Concrete shall be placed in accordance with the specifications.
 19. Concrete shall be placed in accordance with the specifications.
 20. Concrete shall be placed in accordance with the specifications.
- STEEL NOTES:**
1. Provide AISC Standard Specification for steel shapes, plates, and angles.
 2. Provide AISC Standard Specification for welded connections.
 3. Provide AISC Standard Specification for bolted connections.
 4. Provide AISC Standard Specification for steel deck.
 5. Provide AISC Standard Specification for steel pipe.
 6. Provide AISC Standard Specification for steel reinforcement bars.
 7. Provide AISC Standard Specification for steel reinforcement bars.
 8. Provide AISC Standard Specification for steel reinforcement bars.
 9. Provide AISC Standard Specification for steel reinforcement bars.
 10. Provide AISC Standard Specification for steel reinforcement bars.
 11. Provide AISC Standard Specification for steel reinforcement bars.
 12. Provide AISC Standard Specification for steel reinforcement bars.
 13. Provide AISC Standard Specification for steel reinforcement bars.
 14. Provide AISC Standard Specification for steel reinforcement bars.
 15. Provide AISC Standard Specification for steel reinforcement bars.
 16. Provide AISC Standard Specification for steel reinforcement bars.
 17. Provide AISC Standard Specification for steel reinforcement bars.
 18. Provide AISC Standard Specification for steel reinforcement bars.
 19. Provide AISC Standard Specification for steel reinforcement bars.
 20. Provide AISC Standard Specification for steel reinforcement bars.
- FOUNDATION NOTES:**
1. Foundation shall be designed to support the structure.
 2. Foundation shall be designed to support the structure.
 3. Foundation shall be designed to support the structure.
 4. Foundation shall be designed to support the structure.
 5. Foundation shall be designed to support the structure.
 6. Foundation shall be designed to support the structure.
 7. Foundation shall be designed to support the structure.
 8. Foundation shall be designed to support the structure.
 9. Foundation shall be designed to support the structure.
 10. Foundation shall be designed to support the structure.
 11. Foundation shall be designed to support the structure.
 12. Foundation shall be designed to support the structure.
 13. Foundation shall be designed to support the structure.
 14. Foundation shall be designed to support the structure.
 15. Foundation shall be designed to support the structure.
 16. Foundation shall be designed to support the structure.
 17. Foundation shall be designed to support the structure.
 18. Foundation shall be designed to support the structure.
 19. Foundation shall be designed to support the structure.
 20. Foundation shall be designed to support the structure.
- FRAMING NOTES:**
1. Framing shall be designed to support the structure.
 2. Framing shall be designed to support the structure.
 3. Framing shall be designed to support the structure.
 4. Framing shall be designed to support the structure.
 5. Framing shall be designed to support the structure.
 6. Framing shall be designed to support the structure.
 7. Framing shall be designed to support the structure.
 8. Framing shall be designed to support the structure.
 9. Framing shall be designed to support the structure.
 10. Framing shall be designed to support the structure.
 11. Framing shall be designed to support the structure.
 12. Framing shall be designed to support the structure.
 13. Framing shall be designed to support the structure.
 14. Framing shall be designed to support the structure.
 15. Framing shall be designed to support the structure.
 16. Framing shall be designed to support the structure.
 17. Framing shall be designed to support the structure.
 18. Framing shall be designed to support the structure.
 19. Framing shall be designed to support the structure.
 20. Framing shall be designed to support the structure.



THIS DOCUMENT IS THE PROPERTY OF DAVID D. LEASURE ARCHITECTURAL ASSOCIATES INC. IT IS TO BE USED ONLY FOR THE PROJECT AND SITE SPECIFICALLY IDENTIFIED HEREON. IT IS NOT TO BE REPRODUCED, COPIED, OR TRANSMITTED IN ANY FORM OR BY ANY MEANS, ELECTRONIC OR MECHANICAL, INCLUDING PHOTOCOPYING, RECORDING, OR BY ANY INFORMATION STORAGE AND RETRIEVAL SYSTEM, WITHOUT THE WRITTEN PERMISSION OF DAVID D. LEASURE ARCHITECTURAL ASSOCIATES INC.

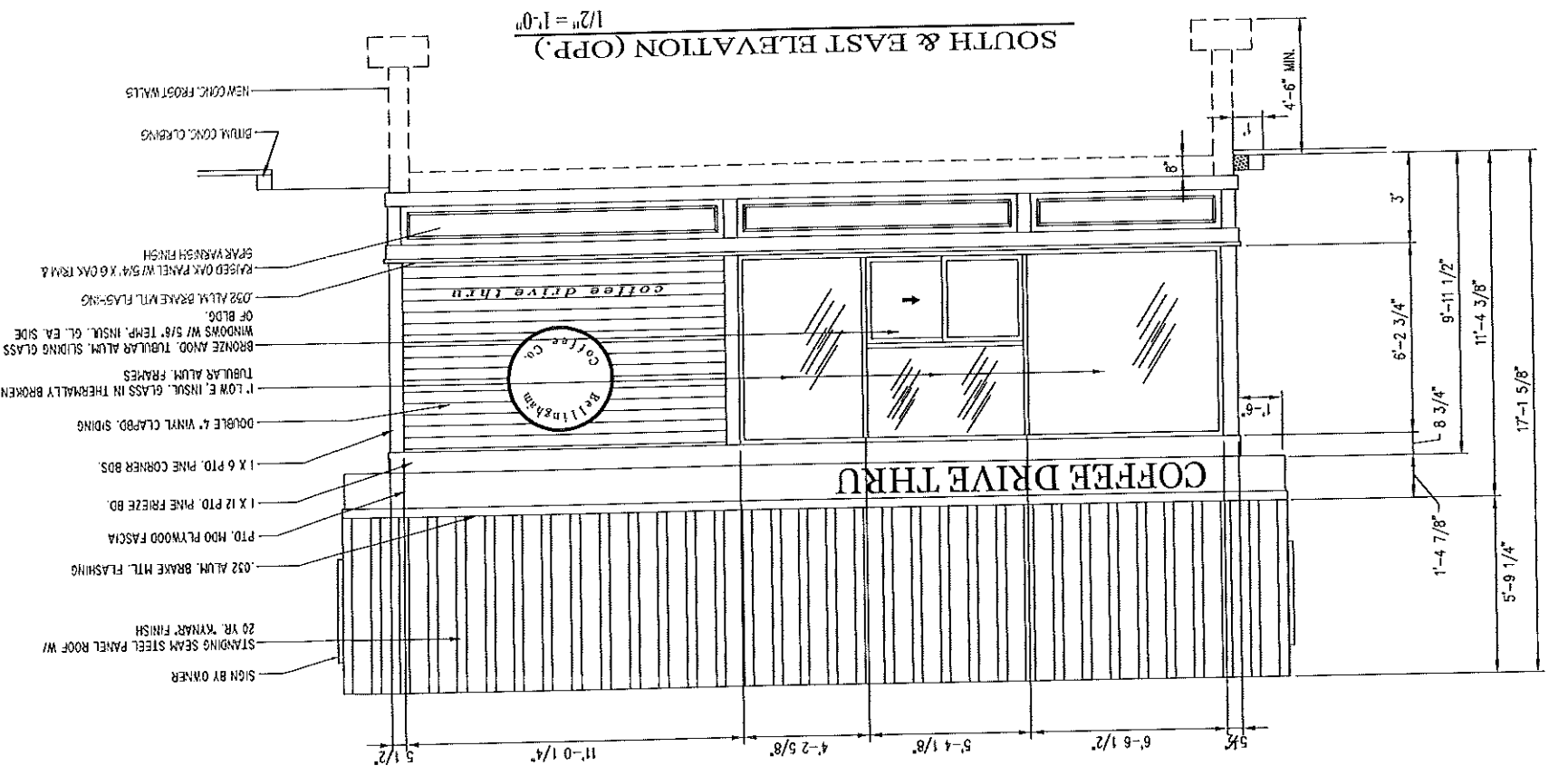
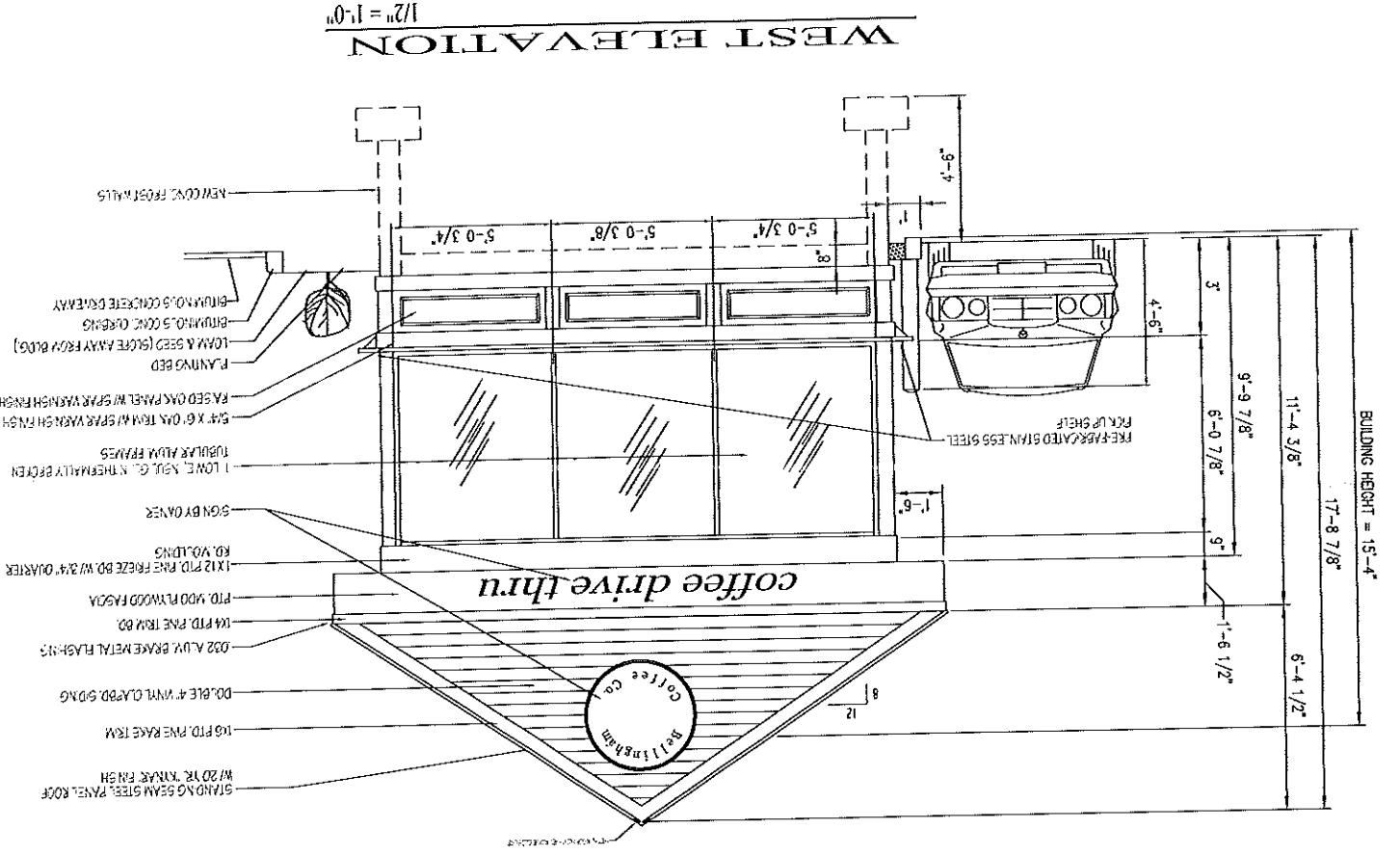
DATE PLOTTED: 10/24/2002 10:58:53 AM
 PLOTTER: HP DesignJet 540C
 FILE: A400R2.dwg

DRIVE-THRU COFFEE SHOP FOR
 BELLINGHAM COFFEE
 519 WARREN AVENUE
 PORTLAND, MAINE
A-400 R2

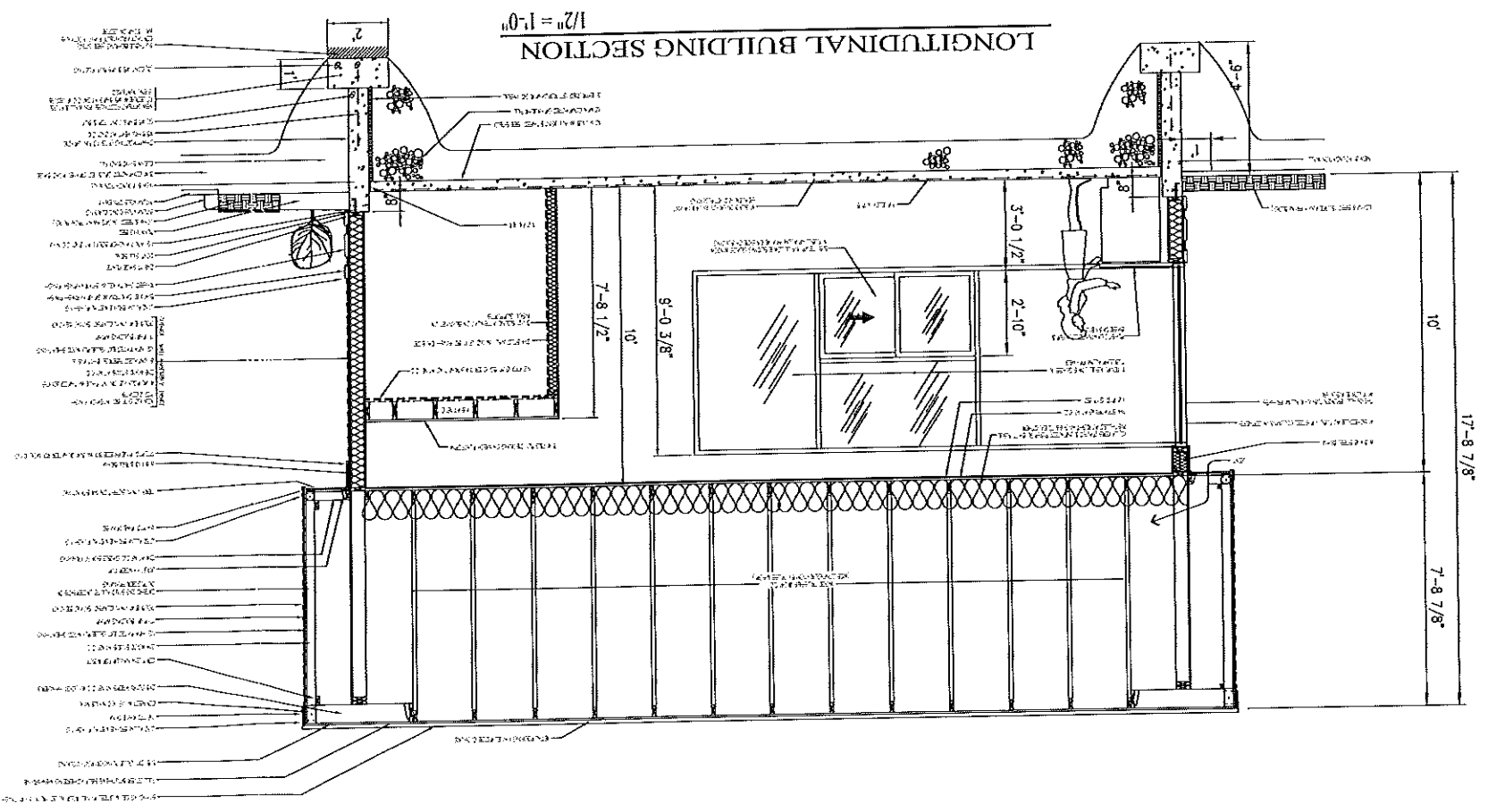
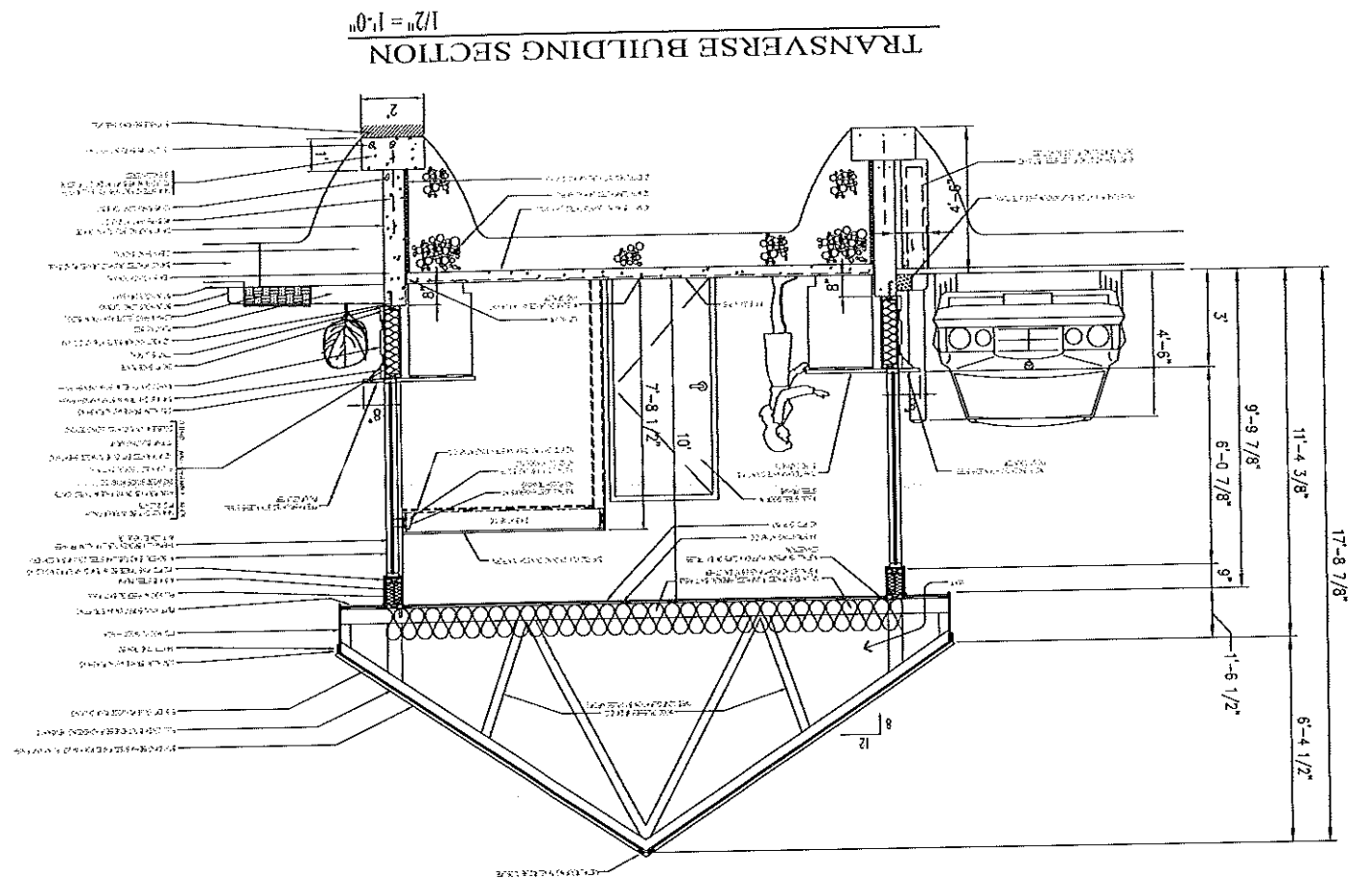
REL. FOR CONSTRUCTION - OCT. 21, 2002

DAVID D. LEASURE - ARCHITECTURAL ASSOCIATES INC.
 1344 WASHINGTON AVENUE PORTLAND, MAINE
 PROJECT NO. 013002 PROJECT TITLE: DRIVE-THRU COFFEE SHOP
 SCALE: 1/2" = 1'-0" SHEET TITLE: EXTERIOR ELEVATIONS - BELLINGHAM COFFEE

1	PROJECT ARCHITECT	DAVID D. LEASURE
2	PROJECT ARCHITECT	DAVID D. LEASURE
3	PROJECT ARCHITECT	DAVID D. LEASURE
4	PROJECT ARCHITECT	DAVID D. LEASURE
5	PROJECT ARCHITECT	DAVID D. LEASURE
6	PROJECT ARCHITECT	DAVID D. LEASURE
7	PROJECT ARCHITECT	DAVID D. LEASURE
8	PROJECT ARCHITECT	DAVID D. LEASURE
9	PROJECT ARCHITECT	DAVID D. LEASURE
10	PROJECT ARCHITECT	DAVID D. LEASURE
11	PROJECT ARCHITECT	DAVID D. LEASURE
12	PROJECT ARCHITECT	DAVID D. LEASURE
13	PROJECT ARCHITECT	DAVID D. LEASURE
14	PROJECT ARCHITECT	DAVID D. LEASURE
15	PROJECT ARCHITECT	DAVID D. LEASURE
16	PROJECT ARCHITECT	DAVID D. LEASURE
17	PROJECT ARCHITECT	DAVID D. LEASURE
18	PROJECT ARCHITECT	DAVID D. LEASURE
19	PROJECT ARCHITECT	DAVID D. LEASURE
20	PROJECT ARCHITECT	DAVID D. LEASURE



DATE: 10/21/02
 DRAWN BY: J. LEASURE
 CHECKED BY: D. LEASURE
 PROJECT: DRIVE-THRU COFFEE SHOP



REL. FOR CONSTRUCTION - OCT. 21, 2002
 DRIVE-THRU COFFEE SHOP FOR
 BELLINGHAM COFFEE
 519 WARREN AVENUE
 PORTLAND, MAINE
 A-500 R2

DAVID D. LEASURE - ARCHITECTURAL ASSOCIATES INC.
 1344 WASHINGTON AVENUE PORTLAND, MAINE
 PROJECT NO. 013002 PROJECT TITLE: DRIVE-THRU COFFEE SHOP
 SCALE: 1/2" = 1'-0" SHEET TITLE: BUILDING SECTIONS - BELLINGHAM COFFEE
 PH: (207) 797-8661 FAX: (207) 797-8533

1	DRIVE-THRU WINDOW
2	DRIVE-THRU LANE
3	SERVICE COUNTER
4	MENU BOARD
5	DRIVE-THRU LANE
6	DRIVE-THRU WINDOW
7	DRIVE-THRU LANE
8	DRIVE-THRU WINDOW
9	DRIVE-THRU LANE
10	DRIVE-THRU WINDOW
11	DRIVE-THRU LANE
12	DRIVE-THRU WINDOW
13	DRIVE-THRU LANE
14	DRIVE-THRU WINDOW
15	DRIVE-THRU LANE
16	DRIVE-THRU WINDOW
17	DRIVE-THRU LANE
18	DRIVE-THRU WINDOW
19	DRIVE-THRU LANE
20	DRIVE-THRU WINDOW
21	DRIVE-THRU LANE
22	DRIVE-THRU WINDOW
23	DRIVE-THRU LANE
24	DRIVE-THRU WINDOW
25	DRIVE-THRU LANE
26	DRIVE-THRU WINDOW
27	DRIVE-THRU LANE
28	DRIVE-THRU WINDOW
29	DRIVE-THRU LANE
30	DRIVE-THRU WINDOW
31	DRIVE-THRU LANE
32	DRIVE-THRU WINDOW
33	DRIVE-THRU LANE
34	DRIVE-THRU WINDOW
35	DRIVE-THRU LANE
36	DRIVE-THRU WINDOW
37	DRIVE-THRU LANE
38	DRIVE-THRU WINDOW
39	DRIVE-THRU LANE
40	DRIVE-THRU WINDOW
41	DRIVE-THRU LANE
42	DRIVE-THRU WINDOW
43	DRIVE-THRU LANE
44	DRIVE-THRU WINDOW
45	DRIVE-THRU LANE
46	DRIVE-THRU WINDOW
47	DRIVE-THRU LANE
48	DRIVE-THRU WINDOW
49	DRIVE-THRU LANE
50	DRIVE-THRU WINDOW

