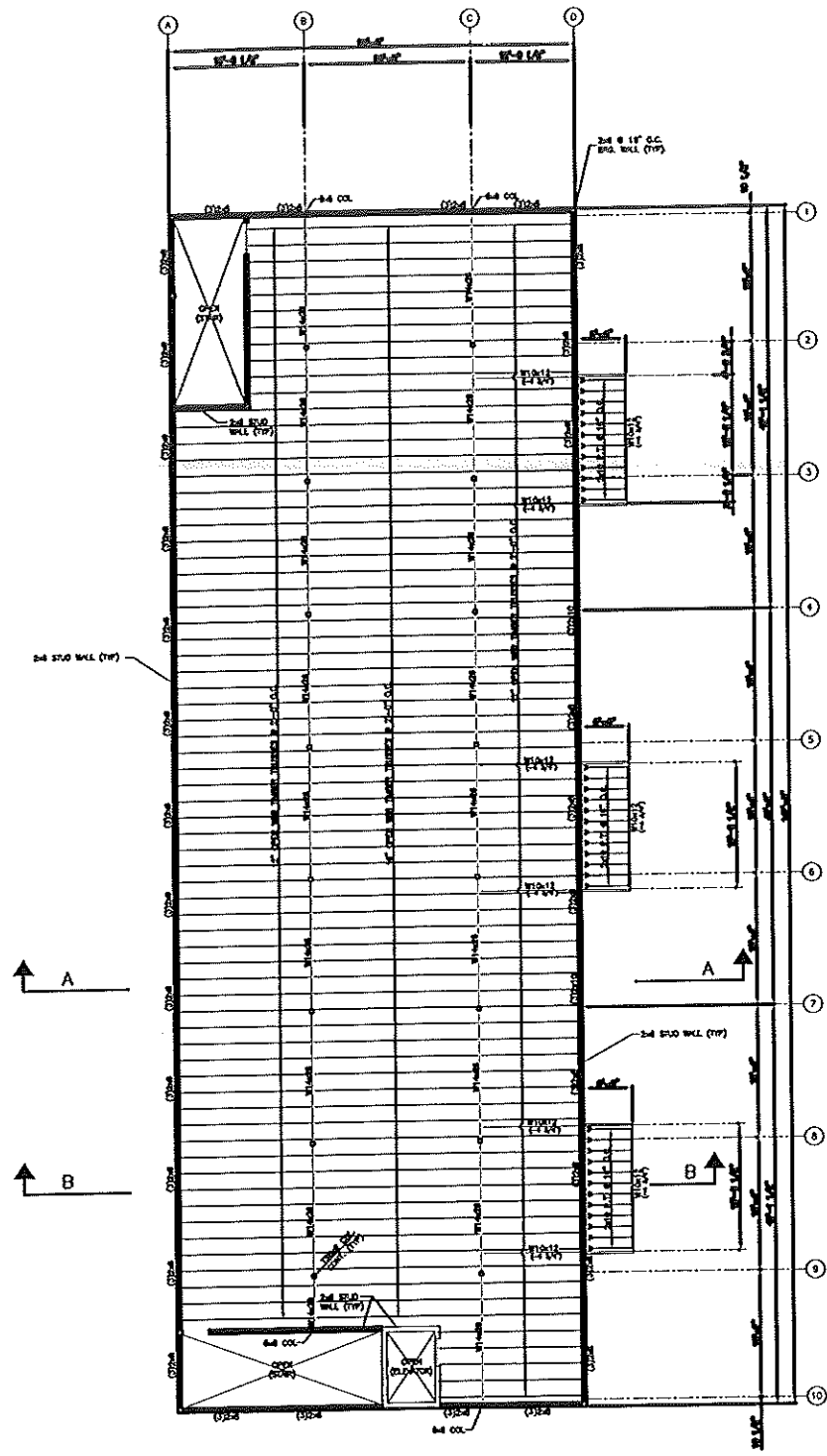


**SECOND FLOOR FRAMING PLAN**

- NOTES:
1. TOP OF FRESH FLOOR ELEVATION = 31'-0 1/2" TYPICAL
  2. TOP OF STEEL ELEVATION = TOP OF GRID TYP. AND 1/2" (C-107)
  3. TOP OF STEEL ELEVATION = 31'-3 1/2"
  4. FLOOR SLAB SHALL BE 3" REIN. CONC. SLAB ON TOP OF GYM. FORM DECK. REIN. SLAB BY 8#-REIN. BAR.
  5. ALL 8# BARS REQUIRE REINFORCED CONCRETE BEAM SEE DRAWING 22.2 FOR ADD. INFORMATION



**THIRD FLOOR FRAMING PLAN**

- NOTES:
1. TOP OF FRESH FLOOR ELEVATION = 34'-0 1/2" TYPICAL
  2. TOP OF STEEL ELEVATION = TOP OF GRID TYP. AND 1/2" (C-107)
  3. TOP OF STEEL ELEVATION = 33'-7 1/2"
  4. FLOOR SLABING SHALL BE 3/4" APA RATED PLYWOOD SUBFLOOR W/ 1/2" PLYWOOD UNDERLAME.

**MARINE USE FACILITY  
CUSTOM HOUSE WHARF  
PORTLAND WATERFRONT, MAINE**

FRAMING PLANS

**S1.1**

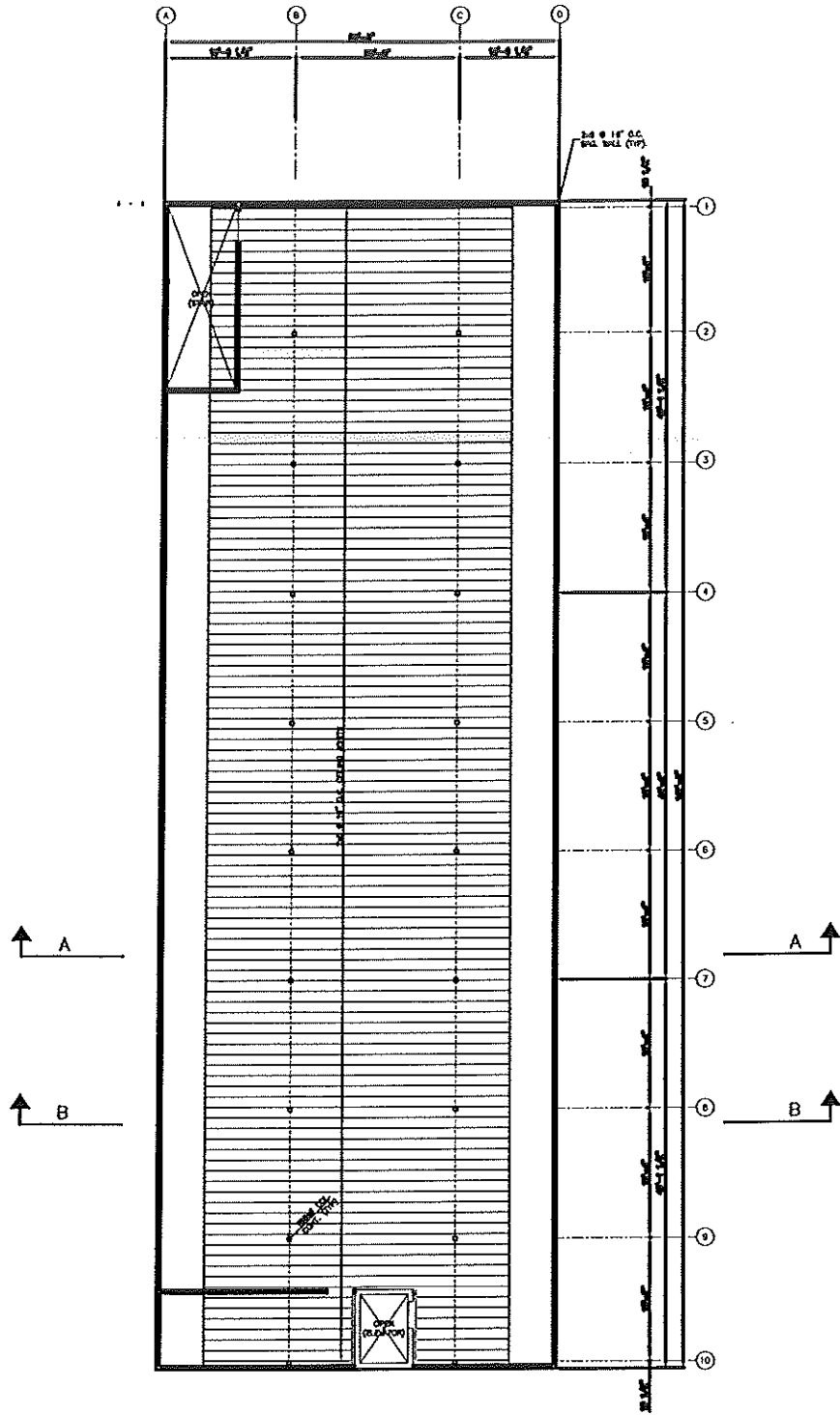
designed by: MFL  
drawn by: LAM  
checked by: MFL  
scale: 1/8" = 1'-0"  
date: JULY 26, 2007  
plot date: JULY 26, 2007  
project #: 21007

REV.	DATE	DESCRIPTION
A	7/26/07	RELEASED FOR BIDDING ONLY

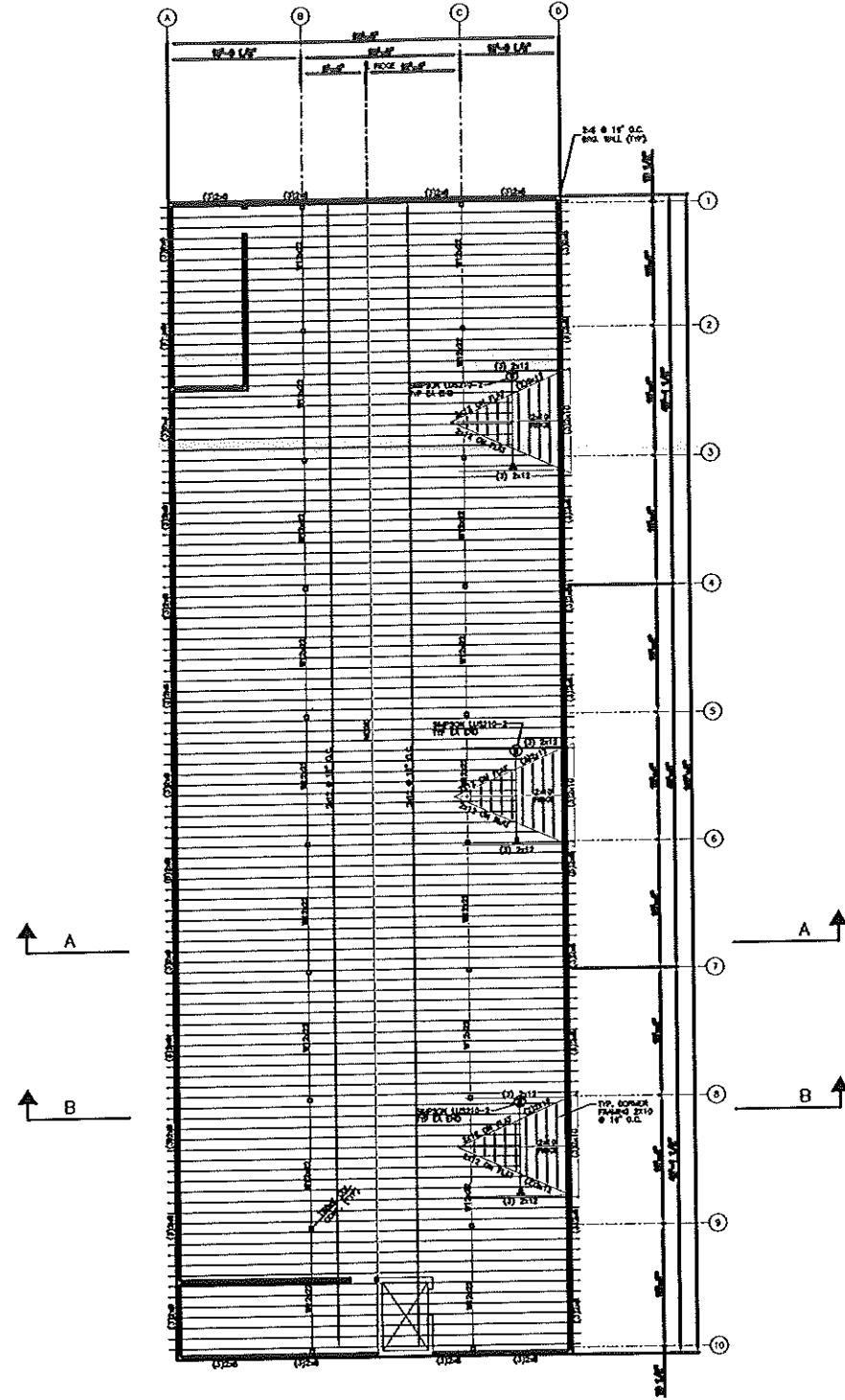


**L & L STRUCTURAL  
ENGINEERING SERVICES, INC.**

PHONE: (207) 883-8243  
FAX: (207) 883-8243  
EMAIL: LLEN@lens.com



CEILING FRAMING PLAN  
W-7-4



ROOF FRAMING PLAN  
W-7-4

MARINE USE FACILITY  
CUSTOM HOUSE WHARF  
PORTLAND WATERFRONT, MAINE

FRAMING PLANS

S1.2

designed by: MFL  
drawn by: LAL  
checked by: JAL  
scale: 1/8" = 1'-0"  
date: JULY 26, 2001  
plot date: JULY 26, 2001  
project #: 21007

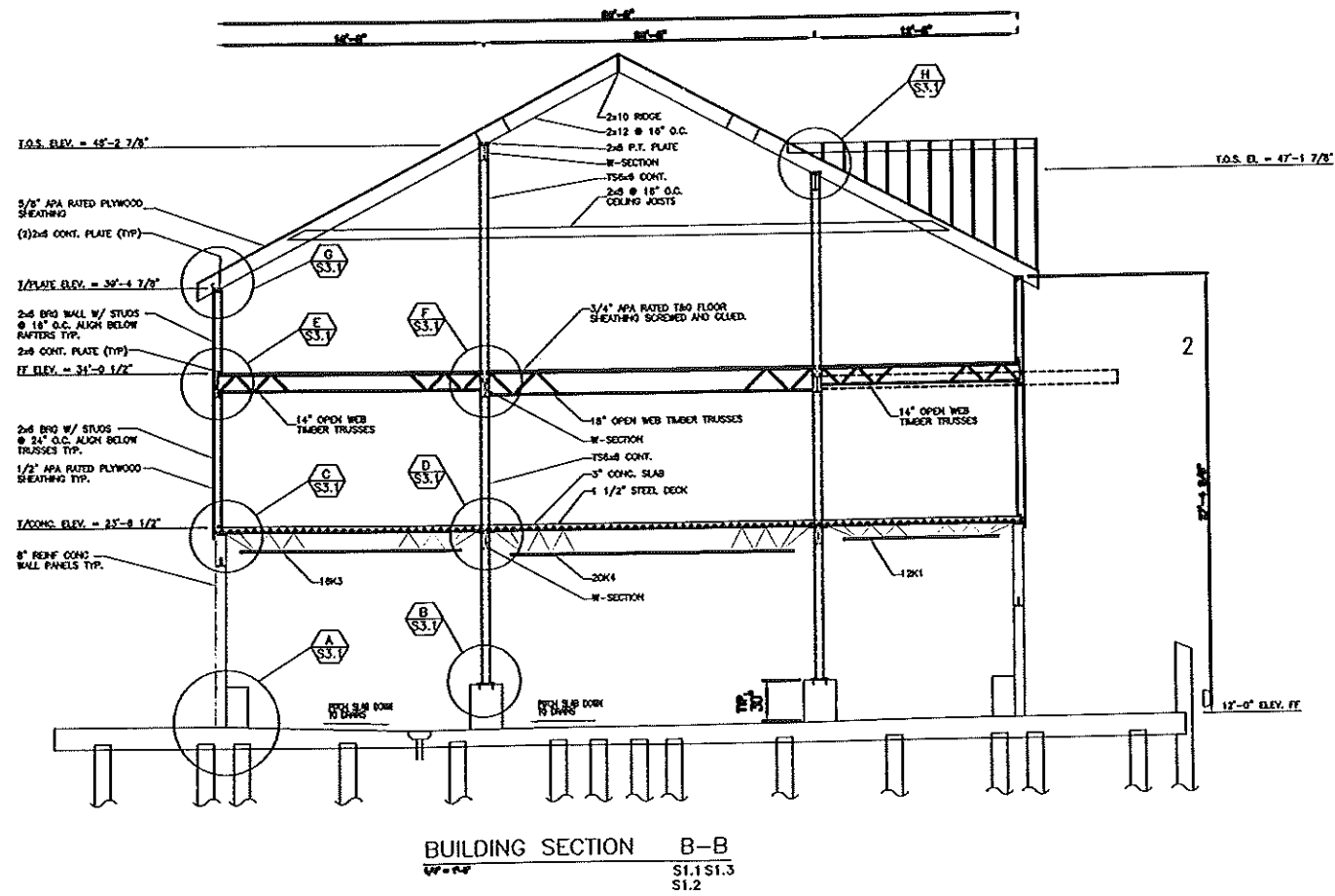
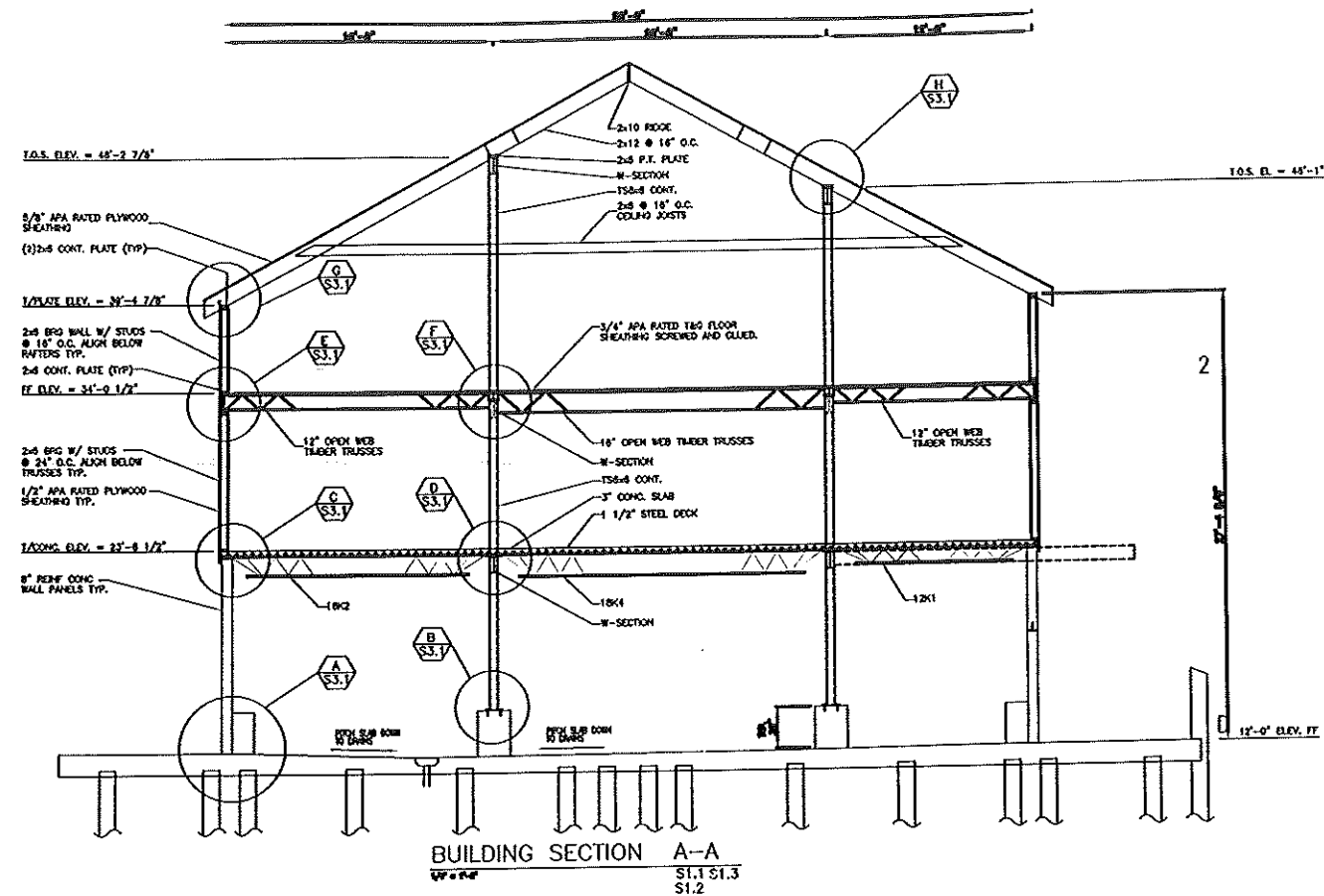
rev.	date	description
A	7/26/01	RELEASED FOR BIDDING ONLY



L & L STRUCTURAL  
ENGINEERING SERVICES, INC.

PHONE: (207) 883-8243  
FAX: (207) 883-8243  
EMAIL: LLEN@lens.com





L & L STRUCTURAL  
ENGINEERING SERVICES, INC.



PHONE: (207) 767-4830  
FAX: (207) 789-5432  
EMAIL: LLENG@LLO.COM

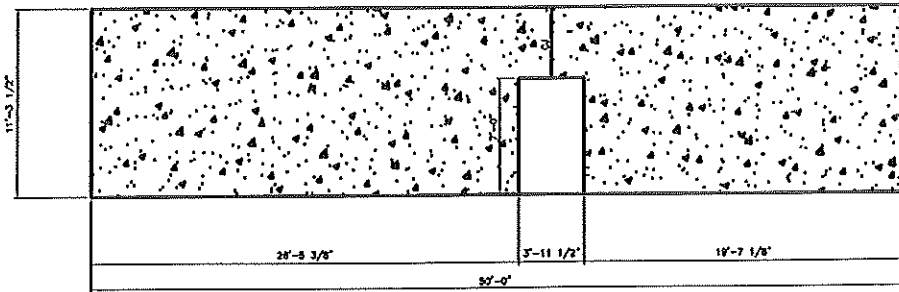
DATE	7/26/01
DESCRIPTION	RELEASED FOR BIDDING ONLY
NO.	A
DESIGNED BY: MFL	
DRAWN BY: LAM	
CHECKED BY: JAL	
SCALE: 1/4" = 1'-0"	
DATE: JULY 26, 2001	
DATE REVISION: JULY 26, 2001	
PROJECT # 21007	

MARINE USE FACILITY  
CUSTOM HOUSE WHARF  
PORTLAND WATERFRONT, MAINE

BUILDING SECTIONS A-A & B-B

S2.1

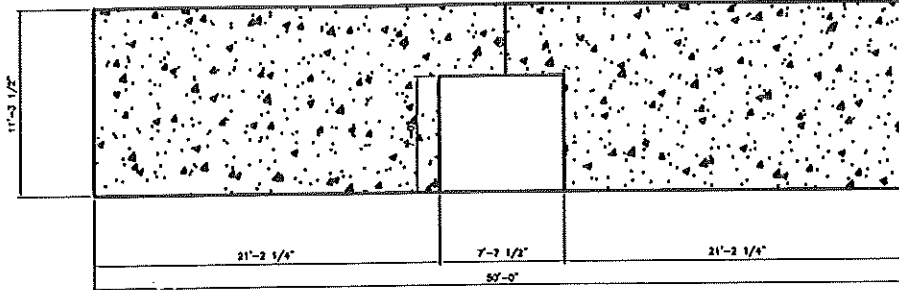
ALL DIMENSIONS ARE TO FACE UNLESS OTHERWISE NOTED.



PRECAST WALL ELEV



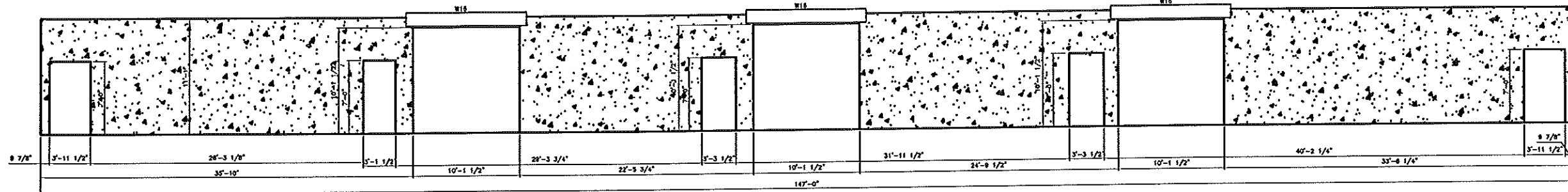
NOTES: 1. COORDINATE DOOR LOCATIONS AND ROUGH OPENING SIZES W/ ARCHITECTURAL DWGS AND/OR DOOR VENDOR REQUIREMENTS.  
2. CJ - INDICATES PRECAST CONSTRUCTION JOINT



PRECAST WALL ELEV



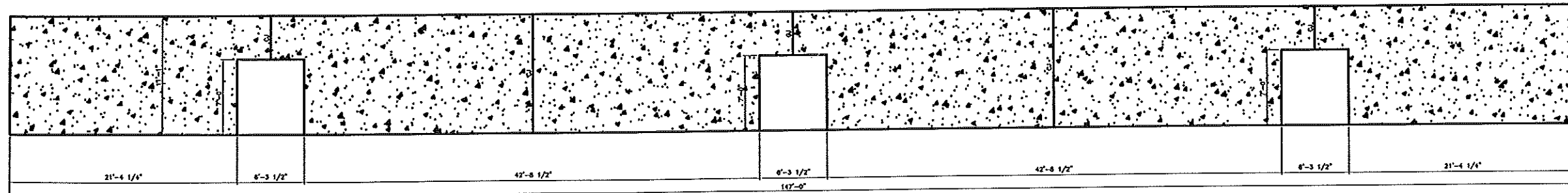
NOTES: 1. COORDINATE DOOR LOCATIONS AND ROUGH OPENING SIZES W/ ARCHITECTURAL DWGS AND/OR DOOR VENDOR REQUIREMENTS.  
2. CJ - INDICATES PRECAST CONSTRUCTION JOINT



PRECAST WALL ELEV



NOTES: 1. COORDINATE DOOR LOCATIONS AND ROUGH OPENING SIZES W/ ARCHITECTURAL DWGS AND/OR DOOR VENDOR REQUIREMENTS.  
2. CJ - INDICATES PRECAST CONSTRUCTION JOINT



PRECAST WALL ELEV



NOTES: 1. COORDINATE DOOR LOCATIONS AND ROUGH OPENING SIZES W/ ARCHITECTURAL DWGS AND/OR DOOR VENDOR REQUIREMENTS.  
2. CJ - INDICATES PRECAST CONSTRUCTION JOINT

GENERAL NOTES:  
1. TOP WALL REINFORCING SHALL BE #4 @16" O.C. HORIZONTAL EACH FACE W/ #5 @ 16" O.C. VERTICAL EA FACE. MINIMUM 1 1/2" CONCRETE COVER.  
2. THE PRECAST MANUFACTURER SHALL BE RESPONSIBLE FOR ADDITIONAL REINFORCING REQUIRED FOR LIFTING AND TRANSPORTATION OF THE PANELS AS REQUIRED.

L & L STRUCTURAL  
ENGINEERING SERVICES, INC.  
PHONE: (207) 767-4630  
FAX: (207) 799-5432  
EMAIL: LLENGO@AOL.COM



DESIGNED BY: ML	DATE: 7/29/01	DESCRIPTION: RELEASED FOR BIDDING ONLY
DRAWN BY: LAM		
CHECKED BY: JHL		
SCALE: 1/4" = 1'-0"		
DATE: JULY 26, 2001		
PLAT DATE: JULY 26, 2001		
PROJECT #: 21087		

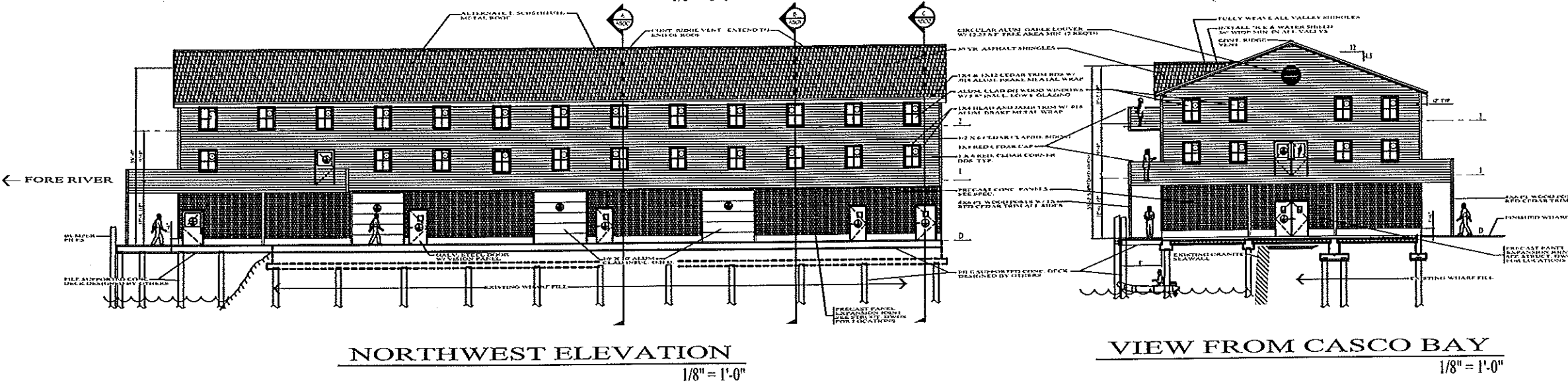
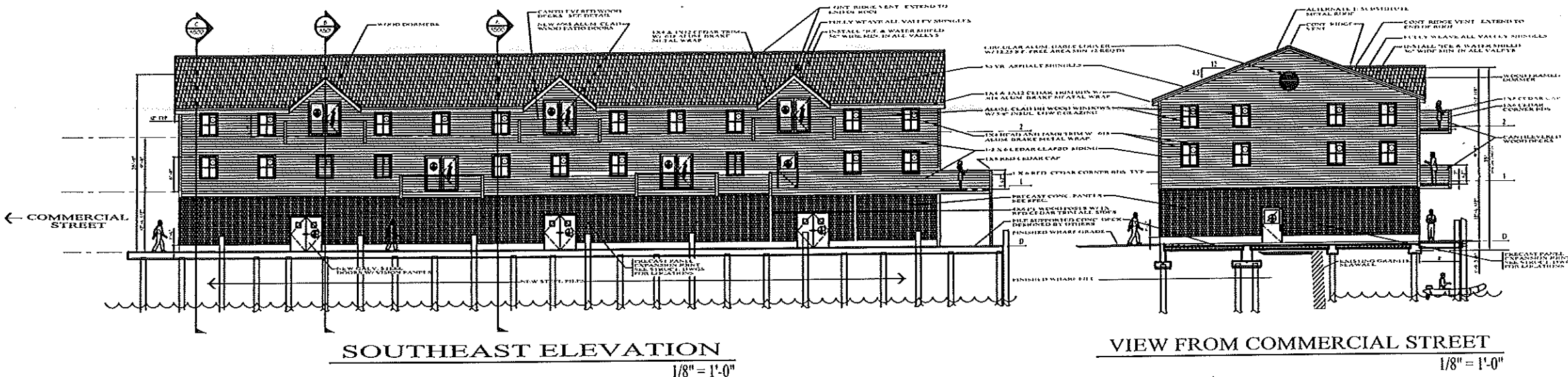
MARINE USE FACILITY  
CUSTOM HOUSE WHARF  
PORTLAND WATERFRONT, MAINE  
PRECAST CONCRETE WALL ELEVATIONS

S2.2

THIS DOCUMENT IS THE PROPERTY OF L & L STRUCTURAL ENGINEERING SERVICES, INC. IT IS TO BE USED ONLY FOR THE PROJECT AND SITE SPECIFICALLY IDENTIFIED HEREON. IT IS NOT TO BE REPRODUCED, COPIED, OR TRANSMITTED IN ANY FORM OR BY ANY MEANS, ELECTRONIC OR MECHANICAL, INCLUDING PHOTOCOPYING, RECORDING, OR BY ANY INFORMATION STORAGE AND RETRIEVAL SYSTEM, WITHOUT THE WRITTEN PERMISSION OF L & L STRUCTURAL ENGINEERING SERVICES, INC.



DATE: 07/26/01	PROJECT: MAINE USE FACILITY - CUSTOM HOUSE WHARF
SCALE: 1/8" = 1'-0"	SHEET: A-400
DESIGNED BY: DAVID D. LEASURE	CHECKED BY: DAVID D. LEASURE
DRAWN BY: DAVID D. LEASURE	DATE: 07/26/01



**EXTERIOR BUILDING ELEVATIONS**

1/8" = 1'-0"

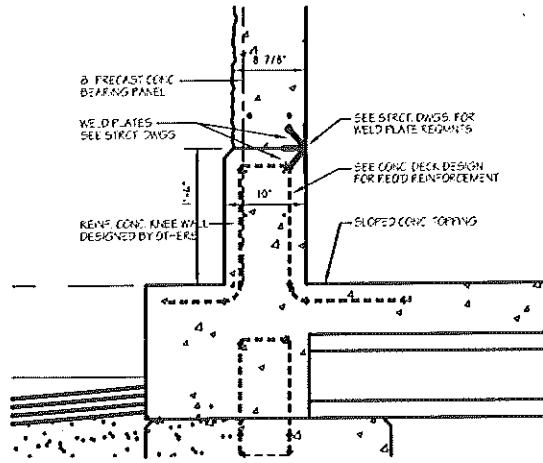
**DAVID D. LEASURE - ARCHITECTURAL ASSOCIATES INC.**  
 1344 WASHINGTON AVENUE PORTLAND, MAINE PH. (207) 797-8661 FAX (207) 797-8533  
 PROJECT NO. 99113 PROJECT TITLE: MAINE USE FACILITY - CUSTOM HOUSE WHARF  
 SCALE: 1/8" = 1'-0" SHEET TITLE: EXTERIOR BUILDING ELEVATIONS

RELEASED FOR BIDDING - JULY 26, 2001

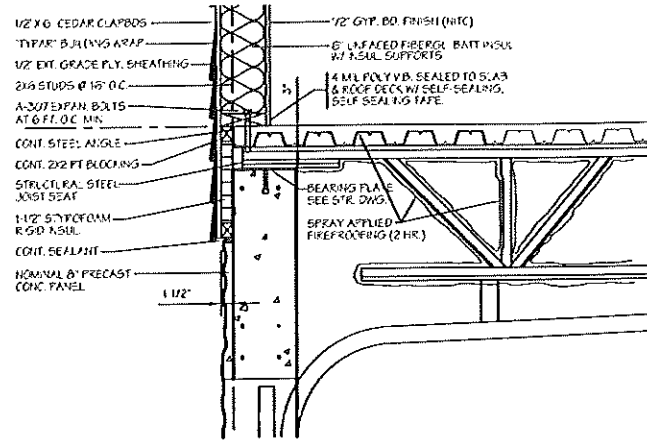
MARINE USE FACILITY  
 CUSTOM HOUSE WHARF  
 PORTLAND WATERFRONT  
 PORTLAND, MAINE

**A-400**

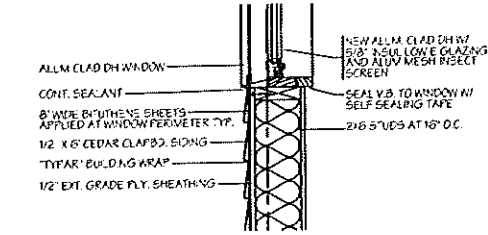
THESE ELEVATIONS ARE PRELIMINARY AND ARE NOT TO BE USED FOR CONSTRUCTION. THE ARCHITECT ASSUMES NO LIABILITY FOR ANY ERRORS OR OMISSIONS. ANY CHANGES TO THESE ELEVATIONS SHALL BE MADE BY THE ARCHITECT IN WRITING. THESE ELEVATIONS ARE THE PROPERTY OF DAVID D. LEASURE ARCHITECTURAL ASSOCIATES INC. AND ARE TO BE KEPT IN CONFIDENCE. ALL RIGHTS ARE RESERVED.



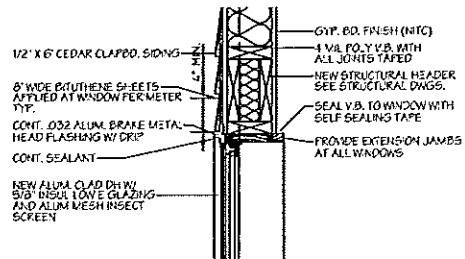
**DETAIL A**  
1-1/2" = 1'-0"



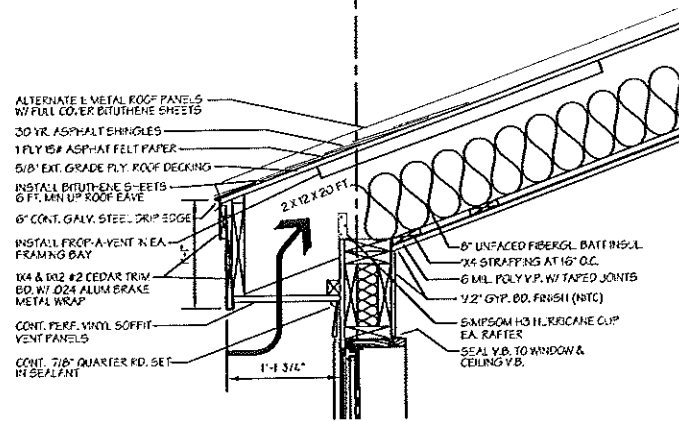
**DETAIL B**  
1-1/2" = 1'-0"



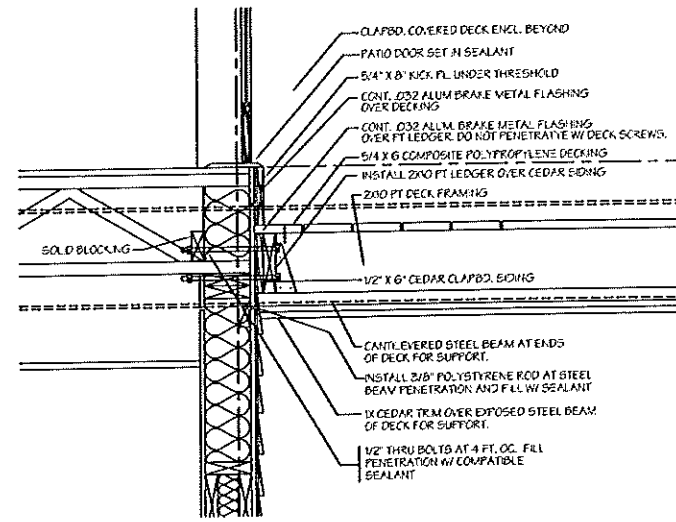
**DETAIL C**  
1-1/2" = 1'-0"



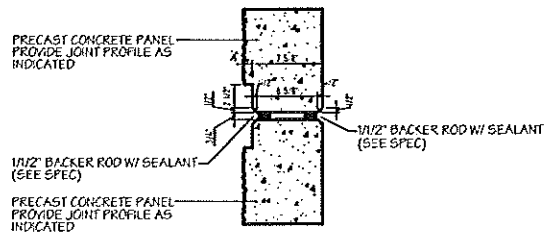
**DETAIL D**  
1-1/2" = 1'-0"



**DETAIL E**  
1-1/2" = 1'-0"



**DETAIL F**  
1-1/2" = 1'-0"



**TYP. PRECAST PANEL EXPANSION JOINT DETAIL**  
1-1/2" = 1'-0"

NOTE:  
SEE STRUCTURAL DWGS FOR  
EXPANSION JOINT LOCATIONS



DATE	11/12/01
PROJECT	PORTLAND WATERFRONT MARINE USE FACILITY
DRAWING NO.	A-503
SCALE	1-1/2" = 1'-0"
DESIGNED BY	DAVID D. LEASURE
CHECKED BY	DAVID D. LEASURE
IN CHARGE	DAVID D. LEASURE
DATE	11/12/01

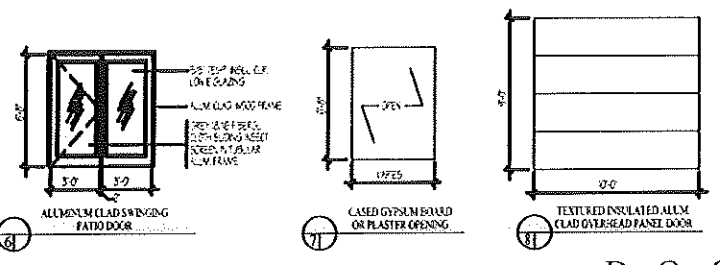
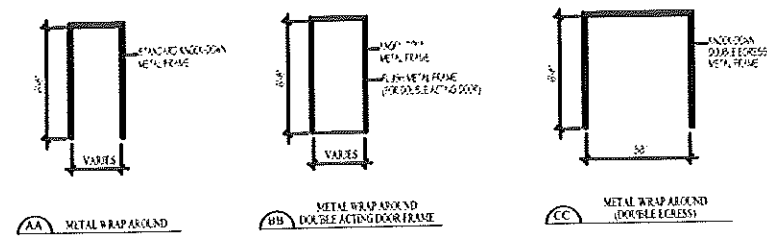
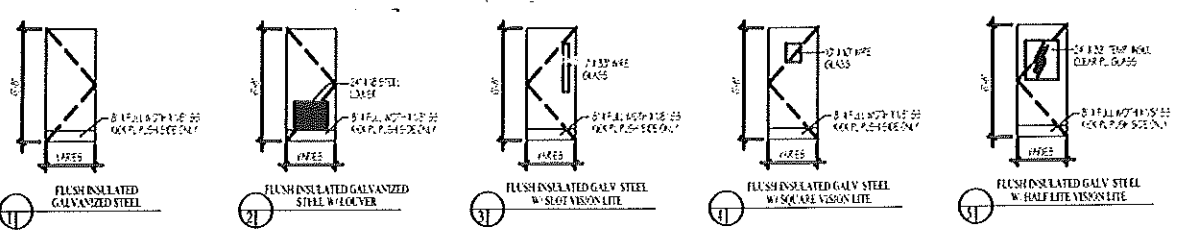
**DAVID D. LEASURE - ARCHITECTURAL ASSOCIATES INC.**  
1344 WASHINGTON AVENUE PORTLAND, MAINE PH. (207) 797-8661 FAX (207) 797-8333  
PROJECT NO. 99113 PROJECT TITLE: MARINE USE FACILITY - CUSTOM HOUSE WHARF  
SCALE: 1-1/2" = 1'-0" SHEET TITLE: DETAILS



RELEASED FOR BIDDING - JULY 26, 2001

MARINE USE FACILITY  
CUSTOM HOUSE WHARF  
PORTLAND WATERFRONT  
PORTLAND, MAINE

**A-503**



DOOR TYPES

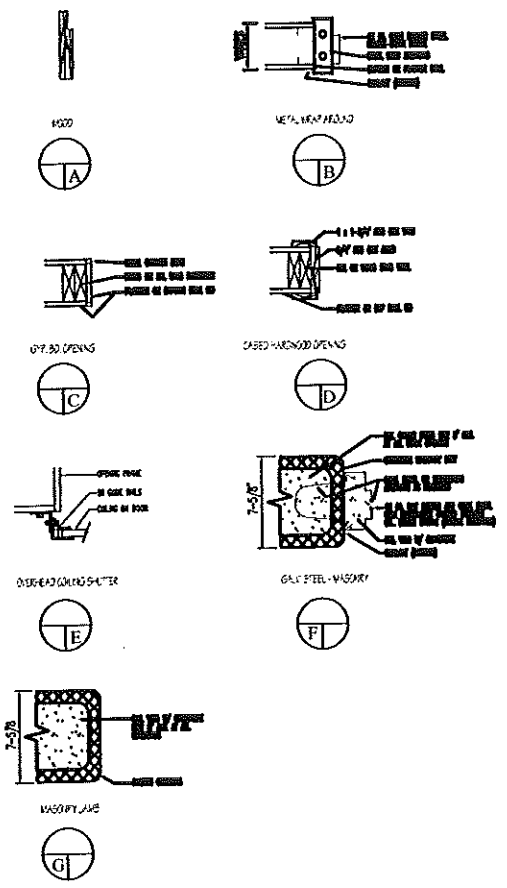
FRAME TYPES



1	2	3	4	5	6	7	8	9	10	11	12	13	14	15	16	17	18	19	20	21	22	23	24	25	26	27	28	29
---	---	---	---	---	---	---	---	---	----	----	----	----	----	----	----	----	----	----	----	----	----	----	----	----	----	----	----	----

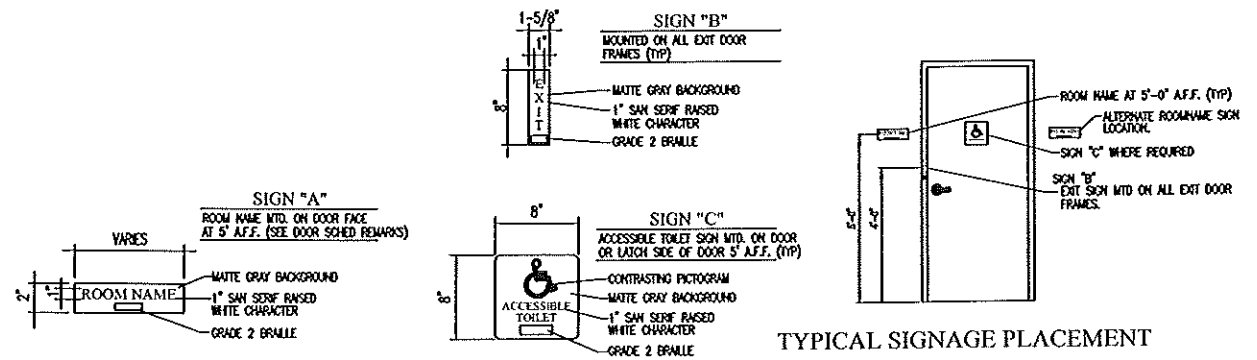
DOOR SCHEDULE

NO.	DOOR SIZE	DOOR TYPE	JAMB TYPE	FRAME TYPE	RATING	HARDWARE	REMARKS
1	NEW 3608 GALV STEEL	3	F	NEW STEEL AA	NO RING	NEW EXL. REBOX REMOVABLE CHECKER, EXL. VISC. PULL, 1-1/2" PNC. HANDLE, 1-1/2" PNC. THICK, HEAVY DUTY CLOSER, ALUM. THRESHOLD, REVERSE WEARSTRIPPING & DOOR BOX SWEEP	<p>GENERAL NOTES:</p> <ol style="list-style-type: none"> <li>ALL NEW HARDWARE TO BE SHOWN ON DRAWING (NOT).</li> <li>ALL NEW LOCKSETS AND CHANGES SHALL BE IDENTIFIED WITH REMOVABLE TYPE CHANGES LOGS. GENERAL CONTRACTOR COORDINATE LOGS OF ALL LOCKSET HARDWARE WITH THE OWNER'S HARDWARE SYSTEM REQUIREMENTS.</li> <li>INSTALL SOURCE AND PHOTOGRAPH FOR ALL FILE # REQUIREMENTS. MAKE ACCESSIBLE DRAWING OF ALL ACCESSIBLE HARDWARE AND PARTS WITH DRAWING AS REQUIRED BY THE CODES AND AS REQUIRED BY THE PLAN SIGNATURE OF THE ARCHITECT WITH QUALITY ACT - TITLE B.</li> </ol>
2	NEW 3608 GALV STEEL	1	F	NEW STEEL AA	NO RING	NEW EXL. REBOX REMOVABLE CHECKER, EXL. VISC. PULL, 1-1/2" PNC. HANDLE, 1-1/2" PNC. THICK, HEAVY DUTY CLOSER, ALUM. THRESHOLD, REVERSE WEARSTRIPPING & DOOR BOX SWEEP	
3	NEW 3608 GALV STEEL	4	F	NEW STEEL AA	NO RING	NEW EXL. REBOX REMOVABLE CHECKER, EXL. VISC. PULL, 1-1/2" PNC. HANDLE, 1-1/2" PNC. THICK, HEAVY DUTY CLOSER, ALUM. THRESHOLD, REVERSE WEARSTRIPPING & DOOR BOX SWEEP	
4	NEW 3608 GALV STEEL	4	F	NEW STEEL AA	NO RING	NEW EXL. REBOX REMOVABLE CHECKER, EXL. VISC. PULL, 1-1/2" PNC. HANDLE, 1-1/2" PNC. THICK, HEAVY DUTY CLOSER, ALUM. THRESHOLD, REVERSE WEARSTRIPPING & DOOR BOX SWEEP	
5	NEW 3608 GALV STEEL	4	F	NEW STEEL AA	NO RING	NEW EXL. REBOX REMOVABLE CHECKER, EXL. VISC. PULL, 1-1/2" PNC. HANDLE, 1-1/2" PNC. THICK, HEAVY DUTY CLOSER, ALUM. THRESHOLD, REVERSE WEARSTRIPPING & DOOR BOX SWEEP	
6	NEW 3608 GALV STEEL	3	F	NEW STEEL AA	NO RING	NEW EXL. REBOX REMOVABLE CHECKER, EXL. VISC. PULL, 1-1/2" PNC. HANDLE, 1-1/2" PNC. THICK, HEAVY DUTY CLOSER, ALUM. THRESHOLD, REVERSE WEARSTRIPPING & DOOR BOX SWEEP	
7	NEW PR. 3608 GALV STEEL	4	F	NEW STEEL AA	NO RING	NEW EXL. REBOX REMOVABLE CHECKER, EXL. VISC. PULL, 1-1/2" PNC. HANDLE, 1-1/2" PNC. THICK, HEAVY DUTY CLOSER, ALUM. THRESHOLD, REVERSE WEARSTRIPPING & DOOR BOX SWEEP	
8	NEW PR. 3608 GALV STEEL	4	F	NEW STEEL AA	NO RING	NEW EXL. REBOX REMOVABLE CHECKER, EXL. VISC. PULL, 1-1/2" PNC. HANDLE, 1-1/2" PNC. THICK, HEAVY DUTY CLOSER, ALUM. THRESHOLD, REVERSE WEARSTRIPPING & DOOR BOX SWEEP	
9	NEW PR. 3608 GALV STEEL	4	F	NEW STEEL AA	NO RING	NEW EXL. REBOX REMOVABLE CHECKER, EXL. VISC. PULL, 1-1/2" PNC. HANDLE, 1-1/2" PNC. THICK, HEAVY DUTY CLOSER, ALUM. THRESHOLD, REVERSE WEARSTRIPPING & DOOR BOX SWEEP	
10	NEW PR. 3608 GALV STEEL	4	F	NEW STEEL AA	NO RING	NEW EXL. REBOX REMOVABLE CHECKER, EXL. VISC. PULL, 1-1/2" PNC. HANDLE, 1-1/2" PNC. THICK, HEAVY DUTY CLOSER, ALUM. THRESHOLD, REVERSE WEARSTRIPPING & DOOR BOX SWEEP	
11	NEW 3608 GALV STEEL	1	F	NEW STEEL AA	3/4 HR. UL	NEW EXL. REBOX REMOVABLE CHECKER, EXL. VISC. PULL, 1-1/2" PNC. HANDLE, 1-1/2" PNC. THICK, HEAVY DUTY CLOSER	
12	NEW 3608 GALV STEEL	1	F	NEW STEEL AA	3/4 HR. UL	NEW EXL. REBOX REMOVABLE CHECKER, EXL. VISC. PULL, 1-1/2" PNC. HANDLE, 1-1/2" PNC. THICK, HEAVY DUTY CLOSER	
13	NEW 3608 GALV STEEL	3	F	NEW STEEL AA	NO RING	NEW EXL. REBOX REMOVABLE CHECKER, EXL. VISC. PULL, 1-1/2" PNC. HANDLE, 1-1/2" PNC. THICK, HEAVY DUTY CLOSER	
14	NEW 3608 GALV STEEL	1	F	NEW STEEL AA	NO RING	NEW EXL. REBOX REMOVABLE CHECKER, EXL. VISC. PULL, 1-1/2" PNC. HANDLE, 1-1/2" PNC. THICK, HEAVY DUTY CLOSER	
15	NEW 3608 GALV STEEL	3	B	NEW STEEL AA	1 HR. UL	NEW EXL. REBOX REMOVABLE CHECKER, EXL. VISC. PULL, 1-1/2" PNC. HANDLE, 1-1/2" PNC. THICK, HEAVY DUTY CLOSER, ALUM. THRESHOLD	
16	NEW 3608 GALV STEEL	3	B	NEW STEEL AA	1 HR. UL	NEW EXL. REBOX REMOVABLE CHECKER, EXL. VISC. PULL, 1-1/2" PNC. HANDLE, 1-1/2" PNC. THICK, HEAVY DUTY CLOSER, ALUM. THRESHOLD	
17	NEW 3608 GALV STEEL	5	B	NEW STEEL AA	NO RING	NEW EXL. REBOX REMOVABLE CHECKER, EXL. VISC. PULL, 1-1/2" PNC. HANDLE, 1-1/2" PNC. THICK, HEAVY DUTY CLOSER, ALUM. THRESHOLD, REVERSE WEARSTRIPPING & DOOR BOX SWEEP	
18	NEW PR. 3608 GALV STEEL	5	B	NEW STEEL AA	NO RING	NEW EXL. REBOX REMOVABLE CHECKER, EXL. VISC. PULL, 1-1/2" PNC. HANDLE, 1-1/2" PNC. THICK, HEAVY DUTY CLOSER, ALUM. THRESHOLD, REVERSE WEARSTRIPPING & DOOR BOX SWEEP	
19	EXSL. 3608 OAK	5	B	NEW STEEL AA	NO RING	NEW EXL. REBOX REMOVABLE CHECKER, EXL. VISC. PULL, 1-1/2" PNC. HANDLE, 1-1/2" PNC. THICK, HEAVY DUTY CLOSER, ALUM. THRESHOLD, REVERSE WEARSTRIPPING & DOOR BOX SWEEP	
20	NEW 6008 PATIO DOOR	6	A	NEW ALUM. CLAD	NO RING	NEW EXL. REBOX REMOVABLE CHECKER, EXL. VISC. PULL, 1-1/2" PNC. HANDLE, 1-1/2" PNC. THICK, HEAVY DUTY CLOSER, ALUM. THRESHOLD, REVERSE WEARSTRIPPING & DOOR BOX SWEEP	
21	NEW 6008 PATIO DOOR	6	A	NEW ALUM. CLAD	NO RING	NEW EXL. REBOX REMOVABLE CHECKER, EXL. VISC. PULL, 1-1/2" PNC. HANDLE, 1-1/2" PNC. THICK, HEAVY DUTY CLOSER, ALUM. THRESHOLD, REVERSE WEARSTRIPPING & DOOR BOX SWEEP	
22	NEW 3608 GALV STEEL	3	B	NEW STEEL AA	1 HR. UL	NEW EXL. REBOX REMOVABLE CHECKER, EXL. VISC. PULL, 1-1/2" PNC. HANDLE, 1-1/2" PNC. THICK, HEAVY DUTY CLOSER, ALUM. THRESHOLD	
23	NEW 3608 GALV STEEL	3	B	NEW STEEL AA	1 HR. UL	NEW EXL. REBOX REMOVABLE CHECKER, EXL. VISC. PULL, 1-1/2" PNC. HANDLE, 1-1/2" PNC. THICK, HEAVY DUTY CLOSER, ALUM. THRESHOLD	
24	NEW 6008 PATIO DOOR	6	A	NEW ALUM. CLAD	NO RING	NEW EXL. REBOX REMOVABLE CHECKER, EXL. VISC. PULL, 1-1/2" PNC. HANDLE, 1-1/2" PNC. THICK, HEAVY DUTY CLOSER, ALUM. THRESHOLD, REVERSE WEARSTRIPPING & DOOR BOX SWEEP	
25	NEW 6008 PATIO DOOR	6	A	NEW ALUM. CLAD	NO RING	NEW EXL. REBOX REMOVABLE CHECKER, EXL. VISC. PULL, 1-1/2" PNC. HANDLE, 1-1/2" PNC. THICK, HEAVY DUTY CLOSER, ALUM. THRESHOLD, REVERSE WEARSTRIPPING & DOOR BOX SWEEP	
26	NEW 6008 PATIO DOOR	6	A	NEW ALUM. CLAD	NO RING	NEW EXL. REBOX REMOVABLE CHECKER, EXL. VISC. PULL, 1-1/2" PNC. HANDLE, 1-1/2" PNC. THICK, HEAVY DUTY CLOSER, ALUM. THRESHOLD, REVERSE WEARSTRIPPING & DOOR BOX SWEEP	
27	NEW 1025 ALUM. CLAD QID	8	A	NEW WOOD	NO RING	POLYURETHANE WOOD FINISH, 1-1/2" PNC. HANDLE, 1-1/2" PNC. THICK, HEAVY DUTY CLOSER, ALUM. THRESHOLD, REVERSE WEARSTRIPPING & DOOR BOX SWEEP	
28	NEW 1025 ALUM. CLAD QID	8	A	NEW WOOD	NO RING	POLYURETHANE WOOD FINISH, 1-1/2" PNC. HANDLE, 1-1/2" PNC. THICK, HEAVY DUTY CLOSER, ALUM. THRESHOLD, REVERSE WEARSTRIPPING & DOOR BOX SWEEP	
29	NEW 1025 ALUM. CLAD QID	8	A	NEW WOOD	NO RING	POLYURETHANE WOOD FINISH, 1-1/2" PNC. HANDLE, 1-1/2" PNC. THICK, HEAVY DUTY CLOSER, ALUM. THRESHOLD, REVERSE WEARSTRIPPING & DOOR BOX SWEEP	



JAMB TYPES

DAVID D. LEASURE - ARCHITECTURAL ASSOCIATES INC.  
 1344 WASHINGTON AVENUE PORTLAND, MAINE PH. (207) 797-8661 FAX (207) 797-8533  
 PROJECT NO. 99113 PROJECT TITLE: MAINE USE FACILITY - CUSTOM HOUSE WHARF  
 SCALE: NO SCALE SHEET TITLE: DOOR, HARDWARE & SIGNAGE SCHEDULE



TYPICAL SIGNAGE PLACEMENT

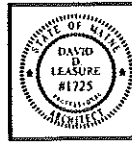
INTERIOR SIGNAGE

- COORDINATE ROOM NAME, NUMBERING, SIGNAGE DESIGN AND COLOR SCHEME WITH THE OWNER'S AND THE AMERICANS WITH DISABILITY ACT REQUIREMENTS.
- PROVIDE SHOP DRAWINGS FOR OWNER'S AND ARCHITECT'S APPROVAL PRIOR TO FABRICATION OF ALL SIGNAGE.

RELEASED FOR BIDDING - JULY 26, 2001

MARINE USE FACILITY  
 CUSTOM HOUSE WHARF  
 PORTLAND WATERFRONT  
 PORTLAND, MAINE

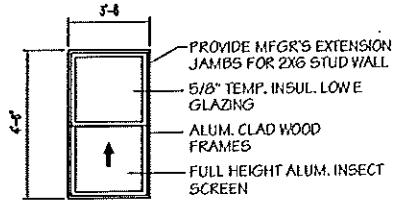
A-800



1	DATE	10/15/00
2	BY	D.D.L.
3	CHECKED	D.D.L.
4	DATE	10/15/00
5	PROJECT	MURPHY'S RESTAURANT
6	NO.	100
7	DATE	10/15/00
8	BY	D.D.L.
9	CHECKED	D.D.L.
10	DATE	10/15/00
11	PROJECT	MURPHY'S RESTAURANT
12	NO.	100
13	DATE	10/15/00
14	BY	D.D.L.
15	CHECKED	D.D.L.
16	DATE	10/15/00
17	PROJECT	MURPHY'S RESTAURANT
18	NO.	100
19	DATE	10/15/00
20	BY	D.D.L.
21	CHECKED	D.D.L.
22	DATE	10/15/00
23	PROJECT	MURPHY'S RESTAURANT
24	NO.	100
25	DATE	10/15/00
26	BY	D.D.L.
27	CHECKED	D.D.L.
28	DATE	10/15/00
29	PROJECT	MURPHY'S RESTAURANT
30	NO.	100
31	DATE	10/15/00
32	BY	D.D.L.
33	CHECKED	D.D.L.
34	DATE	10/15/00
35	PROJECT	MURPHY'S RESTAURANT
36	NO.	100
37	DATE	10/15/00
38	BY	D.D.L.
39	CHECKED	D.D.L.
40	DATE	10/15/00

## ROOM FINISH SCHEDULE

MARK	ROOM NAME	FLOOR	BASE	WALLS				CEILING	REMARKS
				NORTH	EAST	SOUTH	WEST		
100	STAIR "A"	EXTERIOR	N/S/E	2 HR. CMU, FTD 2 COATS	2 HR. CMU, FTD 2 COATS	2 HR. CMU, FTD 2 COATS	(1) LAYER 5/8" GYP. BD. FTD. 2 COATS	NO CEILING	INSTALL RUBBER STAIR TREADS AND FLOOR RISERS ON ALL WOOD STAIR TREADS AND RISERS
101	ELEVATOR	0	N/S/E	2 HR. CMU NO FINISH	2 HR. CMU NO FINISH	2 HR. CMU NO FINISH	2 HR. CMU NO FINISH	NO CEILING	
102	ELEV. MECH.	EXTERIOR	N/S/E	2 HR. CMU NO FINISH	2 HR. CMU NO FINISH	2 HR. CMU NO FINISH	2 HR. CMU NO FINISH	NO CEILING	
103	ELEC.	EXTERIOR	N/S/E	2 HR. CMU NO FINISH	2 HR. CMU NO FINISH	2 HR. CMU NO FINISH	2 HR. CMU NO FINISH	NO CEILING	
104	SUITE 1	EXTERIOR	N/S/E	2 HR. CMU, FTD 2 COATS	2 HR. CMU, FTD 2 COATS		2 HR. CMU, FTD 2 COATS	NO CEILING	
105	SUITE 2	EXTERIOR	N/S/E		2 HR. CMU, FTD 2 COATS		2 HR. CMU, FTD 2 COATS	NO CEILING	
106	SUITE 3	EXTERIOR	N/S/E		2 HR. CMU, FTD 2 COATS	2 HR. CMU, FTD 2 COATS	2 HR. CMU, FTD 2 COATS	NO CEILING	
107	STAIR "B"	EXTERIOR	N/S/E	2 HR. CMU, FTD 2 COATS	2 HR. CMU, FTD 2 COATS	2 HR. CMU, FTD 2 COATS	2 HR. CMU, FTD 2 COATS	NO CEILING	INSTALL RUBBER STAIR TREADS AND FLOOR RISERS ON ALL WOOD STAIR TREADS AND RISERS
108	H.C. LOBBY	EXTERIOR	N/S/E	6" CMU WALL, FTD 2 COATS	2 HR. CMU, FTD 2 COATS	6" CMU WALL, FTD 2 COATS	6" CMU WALL, FTD 2 COATS	NO CEILING	INSTALL BRONZE PER ADA TITLE 11 RESTROOMS, SIGNAGE AND ACCESSIBLE TELEPHONES SHALL BE FITTED WITH COPPER, NICKEL, BRASS, AND ALUMINUM FINISHES AS REQUIRED BY THE MANUFACTURER WITH DURABILITY LETTERS.
109	ELEV. LOBBY	EXTERIOR	N/S/E	2 HR. CMU, FTD 2 COATS	(1) LAYER 5/8" GYP. BD. FTD. 2 COATS	2 HR. CMU, FTD 2 COATS	2 HR. CMU, FTD 2 COATS	NO CEILING	
200	STAIR "A"	EXTERIOR	FLOOR	(1) LAYER 5/8" GYP. BD. FTD. 2 COATS	(1) LAYER 5/8" GYP. BD. FTD. 2 COATS	(2) LAYER 5/8" GYP. BD. FTD. 2 COATS	2 HR. CMU, FTD 2 COATS	NO CEILING	INSTALL RUBBER STAIR TREADS AND FLOOR RISERS ON ALL WOOD STAIR TREADS AND RISERS
201	SECOND FLOOR AREA	EXTERIOR	N/S/E	(2) LAYER 5/8" GYP. BD. FTD. 2 COATS	INSULATED STUD WALL NO FINISH	INSULATED STUD WALL NO FINISH	INSULATED STUD WALL NO FINISH	NO CEILING	NORTH ELEVATOR ENCLOSURE - 2 HR. CMU FTD 2 COATS SOUTH STAIR ENCLOSURE - (2) LAYER 5/8" GYP. BD. FTD 2 COATS
207	STAIR "B"	EXTERIOR	FLOOR	(2) LAYER 5/8" GYP. BD. FTD. 2 COATS	(1) LAYER 5/8" GYP. BD. FTD. 2 COATS	(1) LAYER 5/8" GYP. BD. FTD. 2 COATS	(2) LAYER 5/8" GYP. BD. FTD. 2 COATS	NO CEILING	INSTALL RUBBER STAIR TREADS AND FLOOR RISERS ON ALL WOOD STAIR TREADS AND RISERS
300	STAIR "A"	INTERIOR	FLOOR	(1) LAYER 5/8" GYP. BD. FTD. 2 COATS	(1) LAYER 5/8" GYP. BD. FTD. 2 COATS	(2) LAYER 5/8" GYP. BD. FTD. 2 COATS	2 HR. CMU, FTD 2 COATS	NO CEILING	INSTALL RUBBER STAIR TREADS AND FLOOR RISERS ON ALL WOOD STAIR TREADS AND RISERS
301	THIRD FLOOR AREA	INTERIOR	N/S/E	(2) LAYER 5/8" GYP. BD. FTD. 2 COATS	INSULATED STUD WALL NO FINISH	INSULATED STUD WALL NO FINISH	INSULATED STUD WALL NO FINISH	NO CEILING	NORTH ELEVATOR ENCLOSURE - 2 HR. CMU FTD 2 COATS SOUTH STAIR ENCLOSURE - (2) LAYER 5/8" GYP. BD. FTD 2 COATS
307	STAIR "B"	INTERIOR	FLOOR	(2) LAYER 5/8" GYP. BD. FTD. 2 COATS	(1) LAYER 5/8" GYP. BD. FTD. 2 COATS	(1) LAYER 5/8" GYP. BD. FTD. 2 COATS	(2) LAYER 5/8" GYP. BD. FTD. 2 COATS	NO CEILING	INSTALL RUBBER STAIR TREADS AND FLOOR RISERS ON ALL WOOD STAIR TREADS AND RISERS



PEACHTREE ARIEL DOUBLE HUNG WINDOW: MODEL D3648

MARK	WINDOW SIZE	WINDOW TYPE	MANUFACTURER	ROUGH OPENING	GLASS TYPE	REMARKS
A	3'-0" x 4'-6"	ALUM. CLAD WOOD	PEACHTREE	3'-11 1/4" x 6'-1 1/2"	5/8" TEMP. INSUL. LOW E	PROVIDE ALUM. INSECT SCREEN AND 6" STUDDING EXTENSION ON JAMBS

### GENERAL FINISH NOTES

- WOOD SURFACES:**
- WRAP ALL EXTERIOR WOOD TRIM W/ .024 ALUM. BRASS METAL.
  - DO NOT PAINT OR SEAL INTERIOR WINDOW FRAMES AND SASHES.

- UNIT MASONRY WALLS:**
- FINISH NEW UNIT MASONRY WALLS WITH 1 COAT PRIMA & LAMBERT PRIMA/1 PRIMER AND 1 COAT CELLU-TONE ENAMEL.

- GYPSUM BOARD SURFACES:**
- PATCH ALL PENETRATIONS IN FIRE RATED PARTITIONS, CEILINGS AND SMOKE BARRIERS WITH SEALANT'S SPECIFIED IN THE SPECIFICATIONS MANUAL TO MAINTAIN U.L. SEAL PERFORMANCE WITH DOCA CODE TYPICAL PENETRATION FIRE STOP SYSTEM REQUIREMENTS (DOCA-10995 SECTION 714.0)
  - SECURELY FASTEN ALL DOORS, LAVATORIES, HANDRAILS, MILLWORK, CABINETS, SHELVING, VISION PANELS, GRAB BARS, TOILET ACCESSORIES, AND OTHER COMPONENTS TO CMU, WOOD AND VETAL STUD WALLS.
  - PAINT ALL NEW GYPSUM BOARD WALLS & CEILING WITH ONE COAT PRIMA & LAMBERT PRIMA PLUS FVA LATEX WALL PRIMER AND TWO COATS PRIMA & LAMBERT AQUA BATH LATEX ENAMEL OR APPROVED EQUAL.

- FABRICATED STEEL SURFACES:**
- PAINT ALL METAL DOORS AND FRAMES WITH 2 COATS SEMI GLOSS ALUMENAL.
  - PAINT NEW STEEL HANDRAILS WITH 2 COAT PRIMA & LAMBERT SUPERVAVE ALLOY VETAL REVERNOISE ENAMEL.

- CEILING:**
- SUSPENDED CEILING NOT IN THIS CONTRACT (NITC)
  - INSTALL 4 MIL POLY. VB. WITH ALL JOINTS TAPED OVER CEILING STRAPPING. SEAL JOINTS WITH TERA-SEALER SELF-HEALING TAPE MANUFACTURED BY W.R. GRACE & CO. OF MILWAUKEE, IL. SEE SPECIFICATIONS.

- FLOORING:**
- SEAL ALL INTERIOR CONCRETE FLOORS. SEE SPECIFICATIONS.

- STRUCTURAL STEEL & STEEL JOISTS:**
- PROVIDE MANUFACTURER'S STANDARD RED OXIDE PRIMER ON ALL STRUCTURAL STEEL AND STEEL JOISTS.

- MISCELLANEOUS:**
- DO NOT INSTALL ANY GYPSUM BOARD FINISH ON SECOND AND THIRD FLOOR EXTERIOR WALLS. ALL EXPOS. ASS. BATT AND INSULATED WAPOR BARRIERS. SEAL JOINTS WITH TERA-SEALER SELF-HEALING TAPE MANUFACTURED BY W.R. GRACE & CO. OF MILWAUKEE, IL. SEE SPECIFICATIONS.
  - INSTALL UNFACED FIBERGLASS BATT INSULATION IN THIRD FLOOR ROOF FRAMING SUPPORTED BY INSULATION MESH.
  - DO NOT INSTALL SUSPENDED ACoust. CEILINGS ON ANY FLOOR LEVELS. ALL SUSPENDED CEILING NOT IN CONTRACT (NITC)

**DAVID D. LEASURE - ARCHITECTURAL ASSOCIATES INC.**  
 1344 WASHINGTON AVENUE PORTLAND, MAINE PH. (207) 797-8661 FAX (207) 797-8533  
 PROJECT NO. 99113 PROJECT TITLE: MAINE USE FACILITY - CUSTOM HOUSE WHARF  
 SCALE: NO SCALE SHEET TITLE: ROOM FINISH & WINDOW SCHEDULE

RELEASED FOR BIDDING - JULY 26, 2001

MARINE USE FACILITY  
 CUSTOM HOUSE WHARF  
 PORTLAND WATERFRONT  
 PORTLAND, MAINE

# A-801

THIS DRAWING IS THE PROPERTY OF DAVID D. LEASURE ARCHITECTURAL ASSOCIATES INC. IT IS TO BE USED ONLY FOR THE PROJECT AND SITE SPECIFICALLY IDENTIFIED HEREON. IT IS NOT TO BE REPRODUCED, COPIED, OR TRANSMITTED IN ANY FORM OR BY ANY MEANS, ELECTRONIC OR MECHANICAL, INCLUDING PHOTOCOPYING, RECORDING, OR BY ANY INFORMATION STORAGE AND RETRIEVAL SYSTEM, WITHOUT THE WRITTEN PERMISSION OF DAVID D. LEASURE ARCHITECTURAL ASSOCIATES INC.