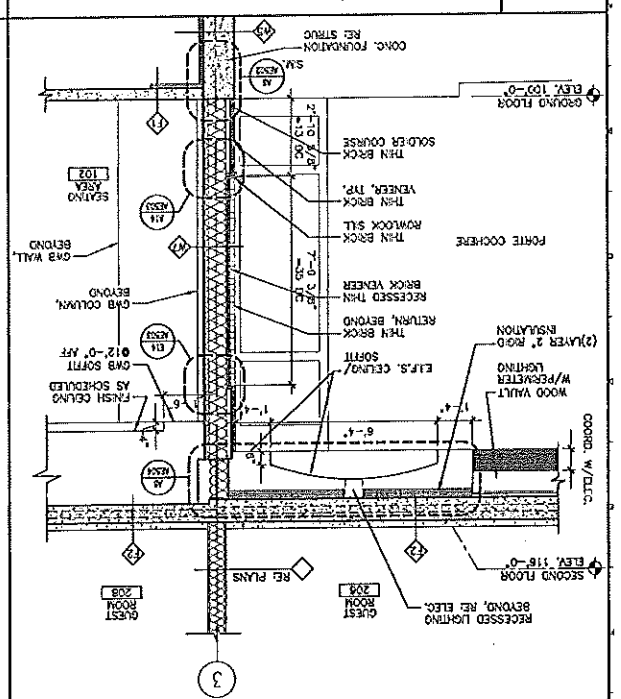
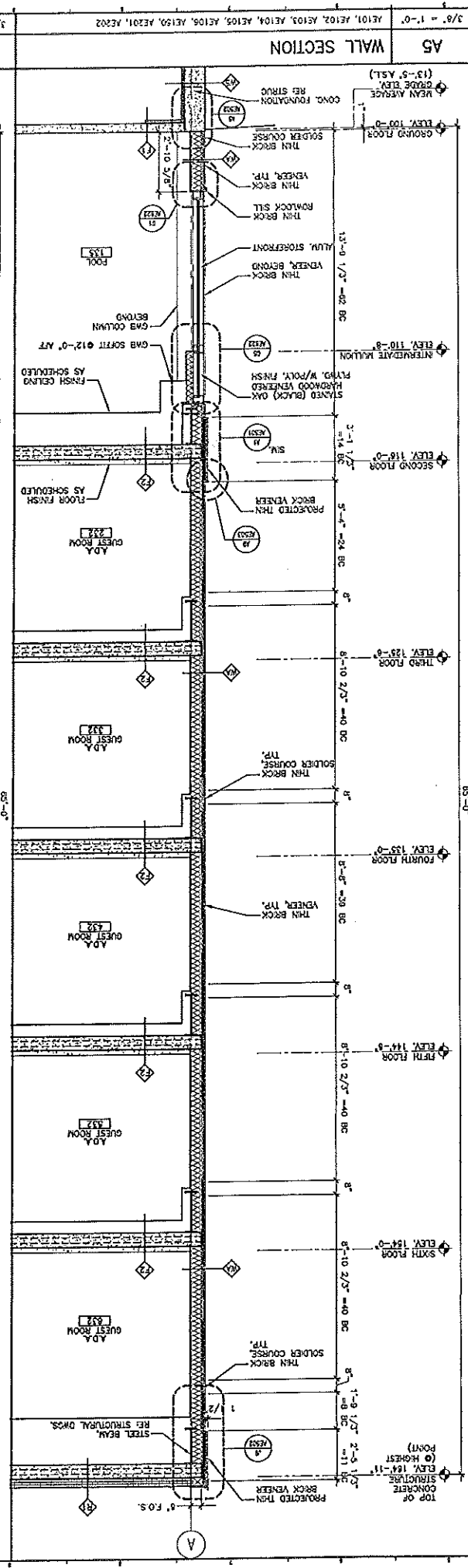


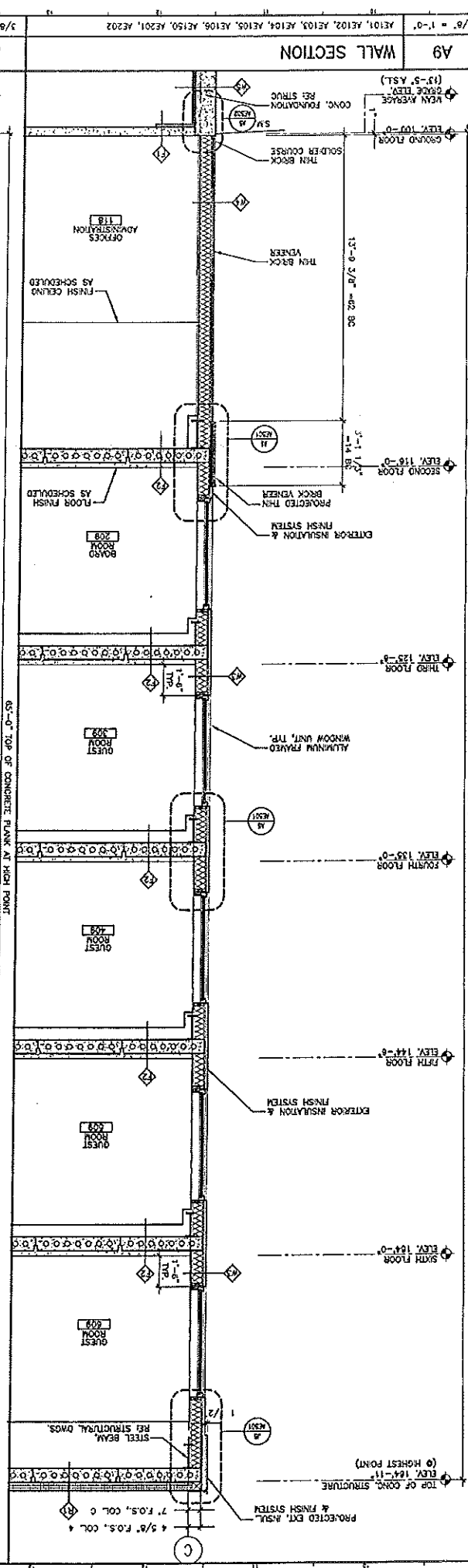
3/4" = 1'-0" WALL SECTION G1



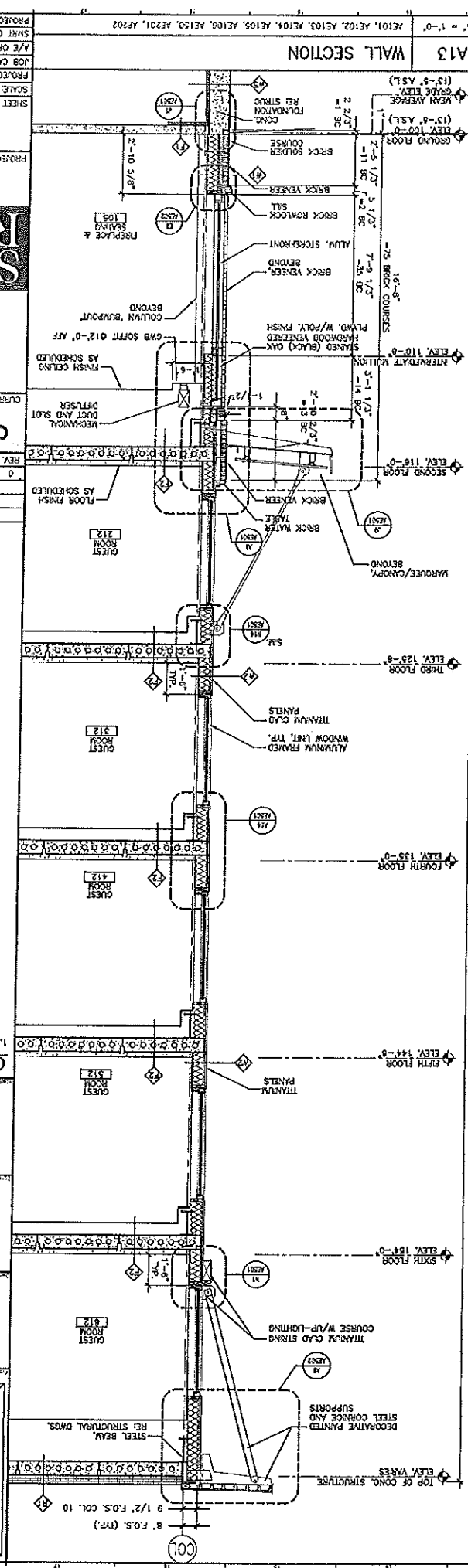
3/8" = 1'-0" WALL SECTION A1



3/8" = 1'-0" WALL SECTION A5



3/8" = 1'-0" WALL SECTION A9



3/8" = 1'-0" WALL SECTION A13

WALL SECTIONS

HILTON GARDEN INN
65 COMMERCIAL STREET
PORTLAND, MAINE

SM RT
ARCHITECTURE ENGINEERING PLANNING

CONSTRUCTION DOCUMENTS
5-29-02

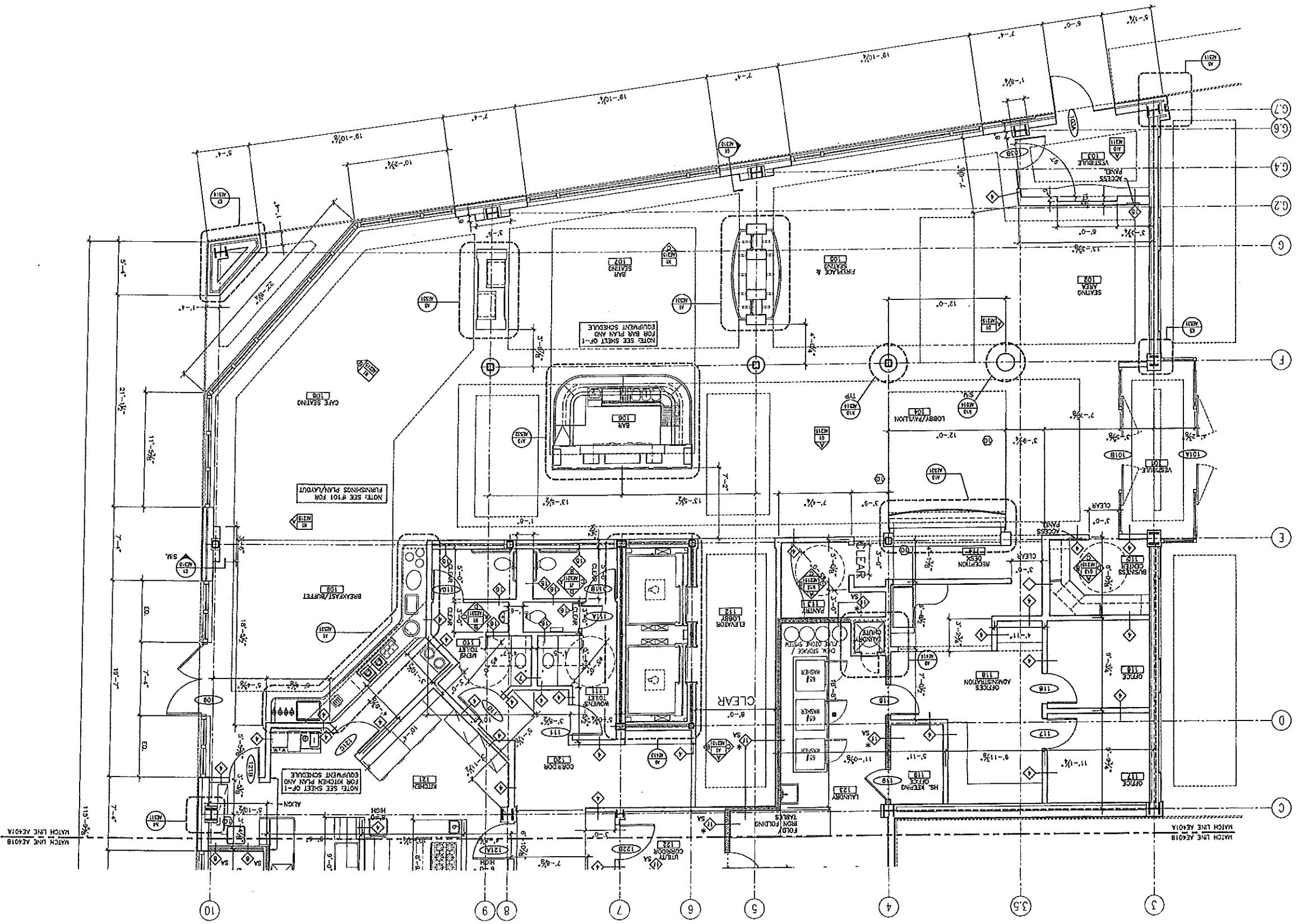
GENERAL NOTES:
1. REFER TO CONSTRUCTION LEGENDS ON 0202 FOR ACTUAL CONSTRUCTION DESCRIPTIONS.

ALLIED/COOK CONSTRUCTION

Hilton Garden Inn
65 COMMERCIAL STREET
PORTLAND, MAINE

OLYMPIA EQUITY INVESTORS

DATE: 5-29-02
SCALE: AS NOTED
PROJECT MANAGER: J.M.
DATE OF RECORD: J.M.
SHEET NO.: AE310



PROJECT NO. 22004	
SHEET CAD FILE: AE401-22004	
SHEET NO. AE401A	
JOB CAP/DRAWN: MVO	
PROJECT MANAGER: JLI	
SCALE: AS NOTED	
DATE: 5-29-02	
SHEET TITLE: PARTIAL ENLARGED FLOOR PLAN	
PROJECT: HILTON GARDEN INN 65 COMMERCIAL STREET PORTLAND, MAINE	
ARCHITECTURE ENGINEERING PLANNING 144 FRY STREET, SUITE 1118 PORTLAND, MAINE 04101 TEL: (207) 772-3500 FAX: (207) 772-1000	
CURRENT ISSUE STATUS: CONSTRUCTION DOCUMENTS 5-29-02	
REV.	DATE
0	5-23-02
CONSTRUCTION DOCUMENTS	
DESCRIPTION	

Hilton
Garden Inn
65 COMMERCIAL STREET
PORTLAND, MAINE

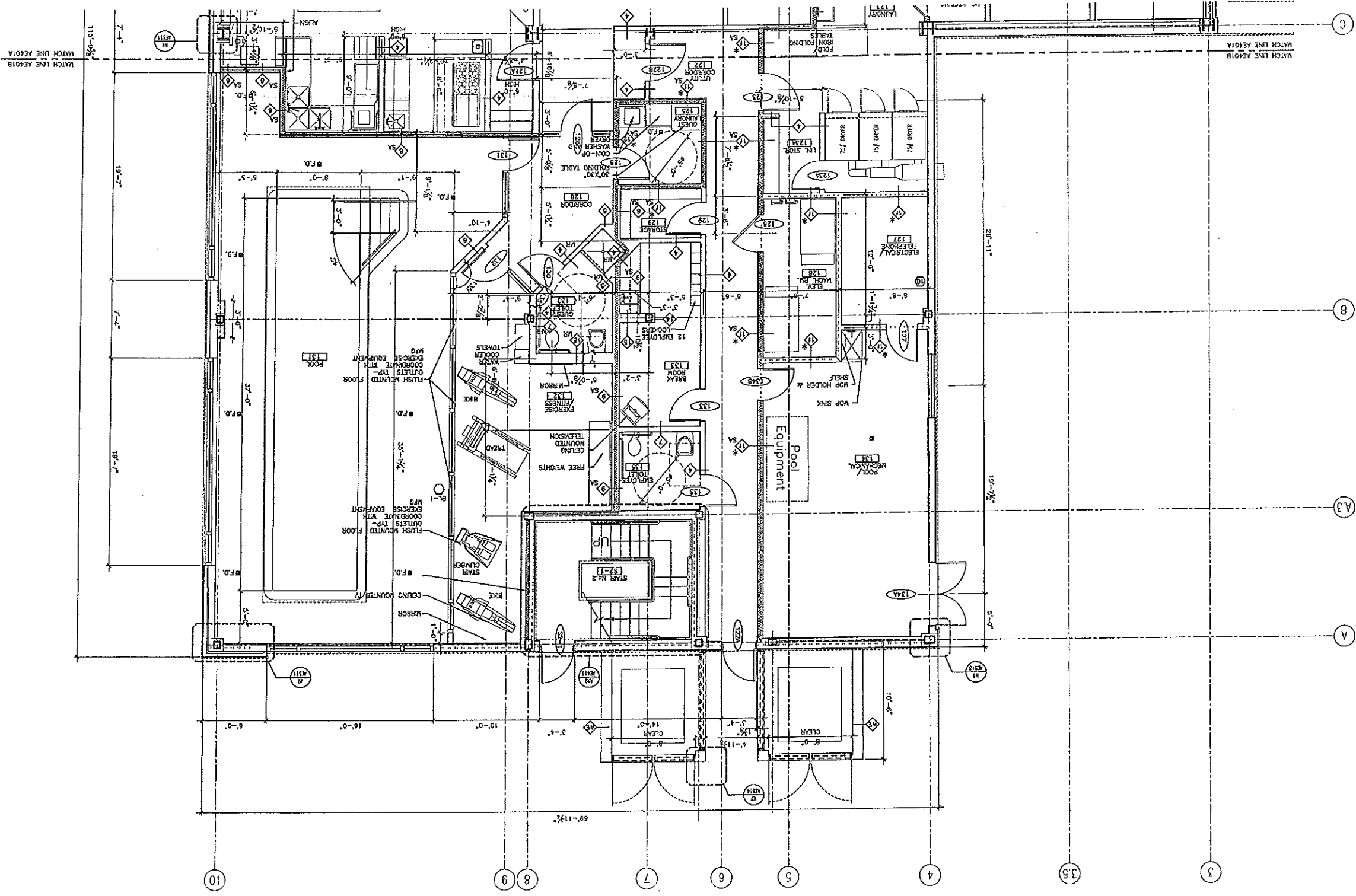
ALLIED/COOK
CONSTRUCTION
Partners • Managers • Design Builders
Building Excellence Since 1958

OLYMPIA EQUITY INVESTORS

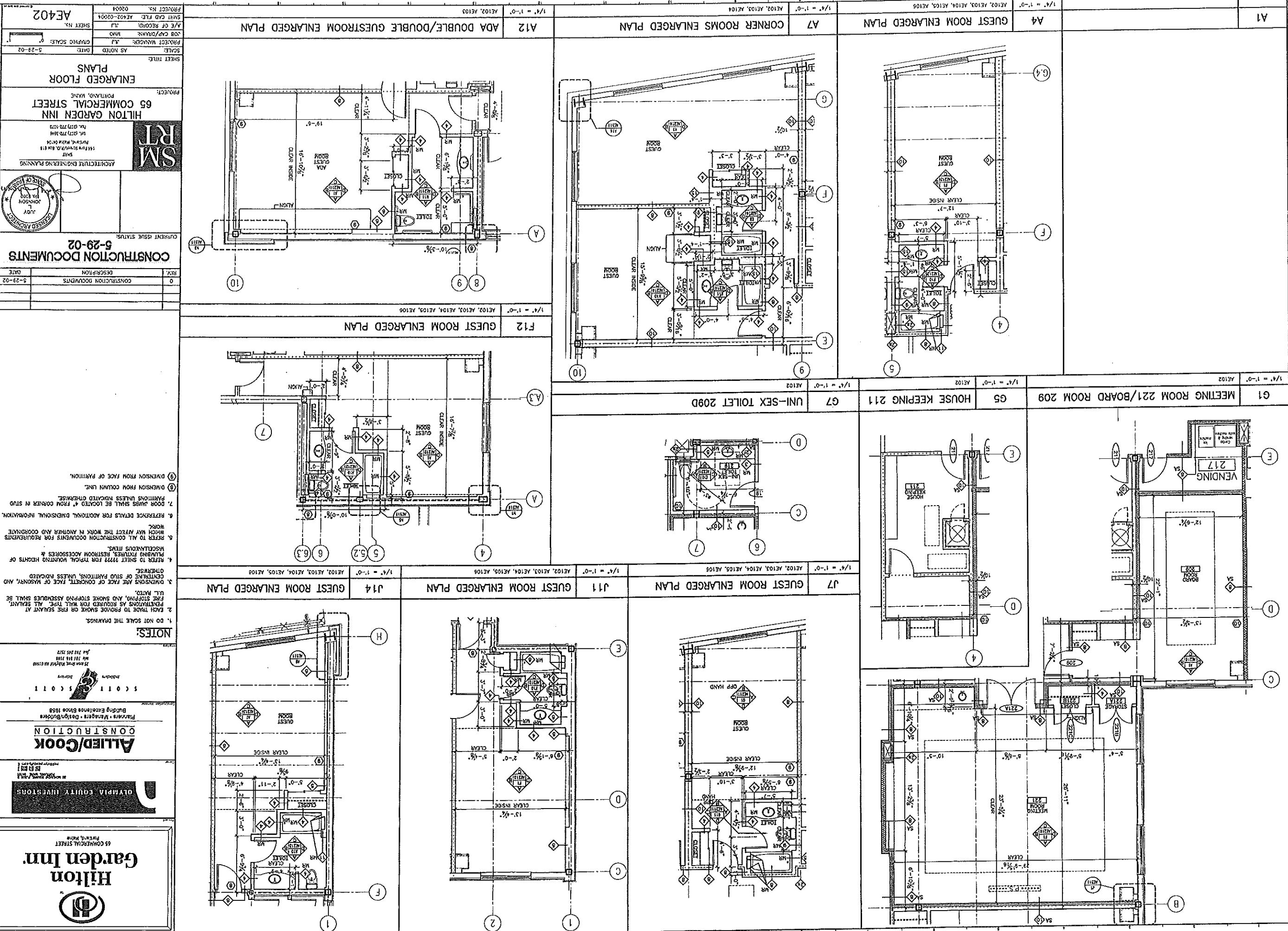
SCOTT
CONSTRUCTION

MATCH LINE AE401A

MATCH LINE AE401B



<p>Hilton Garden Inn. 65 COMMERCIAL STREET PORTLAND, MAINE</p>	<p>OLYMPIA EQUITY INVESTORS</p>						
<p>Allied/Cook CONSTRUCTION Planners • Managers • Constructors Building Excellence Since 1958</p>	<p>SCOTT SCOTT Architects 1500-2000 W. 10TH AVE. SUITE 100 DENVER, CO 80202</p>						
<p>SM RT ARCHITECTURE ENGINEERING PLANNING 144 FIVE STAR BLVD. SUITE 411 PORTLAND, MAINE 04101 TEL: (207) 772-1544 FAX: (207) 772-1573</p>	<p>CONSTRUCTION DOCUMENTS 5-29-02</p> <table border="1" style="width: 100%; border-collapse: collapse;"> <thead> <tr> <th>REV.</th> <th>DESCRIPTION</th> <th>DATE</th> </tr> </thead> <tbody> <tr> <td>0</td> <td>CONSTRUCTION DOCUMENTS</td> <td>5-29-02</td> </tr> </tbody> </table>	REV.	DESCRIPTION	DATE	0	CONSTRUCTION DOCUMENTS	5-29-02
REV.	DESCRIPTION	DATE					
0	CONSTRUCTION DOCUMENTS	5-29-02					
<p>CONSTRUCTION DOCUMENTS 5-29-02</p>							
<p>CURRENT ISSUE STATUS:</p>							
<p>SM RT ARCHITECTURE ENGINEERING PLANNING</p>							
<p>HILTON GARDEN INN 65 COMMERCIAL STREET PORTLAND, MAINE</p>							
<p>PARTIAL ENLARGED FLOOR PLAN</p>							
<p>SHEET TITLE:</p>							
<p>DATE: 5-29-02</p>							
<p>GRAPHIC SCALE: 1" = 1'-0"</p>							
<p>PROJECT MANAGER: J.J.</p>							
<p>JOB CYP/OWNER: WVO</p>							
<p>A/E OF RECORD: J.J.</p>							
<p>SHEET CAD FILE: A5401-02004</p>							
<p>PROJECT NO.: 02004</p>							
<p>PROJECT NAME: AE401B</p>							



REV.	DESCRIPTION	DATE
0	CONSTRUCTION DOCUMENTS	5-29-02

CONSTRUCTION DOCUMENTS
5-29-02

CURRENT ISSUE STATUS

ARCHITECTURE ENGINEERING PLANNING
SM RT
144 Forest Street, 8th Floor
Portland, Maine 04103
Tel: (207) 779-3444
Fax: (207) 779-1070

HILTON GARDEN INN
65 COMMERCIAL STREET
PORTLAND, MAINE

ENLARGED FLOOR PLANS

AS NOTED
DATE: 5-29-02
SCALE: GRAPHIC SCALE
PROJECT MANAGER: J.J.
JOB CYP/OWNER: HANO
A/E OF RECORD: J.J.
SHEET CAD FILE: AE402-02004
PROJECT NO.: AE402

NOTES:

- DO NOT SCALE THE DRAWINGS.
- EACH TRADE TO PROVIDE SMOKE OR FIRE SEALANT AT PENETRATIONS AS REQUIRED FOR WALL TYPE. ALL SEALANT, FIRE STOPPING, AND SMOKE STOPPING ASSEMBLIES SHALL BE U.L. LISTED.
- DIMENSIONS ARE FACE OF CONCRETE, FACE OF MASONRY, AND CENTRALS OF STUD PARTITIONS, UNLESS INDICATED OTHERWISE.
- REFER TO SHEET 2222 FOR TYPICAL MOUNTING HEIGHTS OF MISCELLANEOUS ITEMS.
- PLANNING FIXTURES, RESTROOM ACCESSORIES & MISCELLANEOUS ITEMS.
- REFER TO ALL CONSTRUCTION DOCUMENTS FOR REQUIREMENTS WHICH MAY AFFECT THE WORK IN ANOTHER AND COORDINATE WORK.
- REFERENCE DETAILS FOR ADDITIONAL DIMENSIONAL INFORMATION. ROOM DIMS SHALL BE LOCATED 4" FROM CORNER IN STUD PARTITIONS UNLESS INDICATED OTHERWISE.
- DIMENSION FROM COLUMN LINE.
- DIMENSION FROM FACE OF PARTITION.

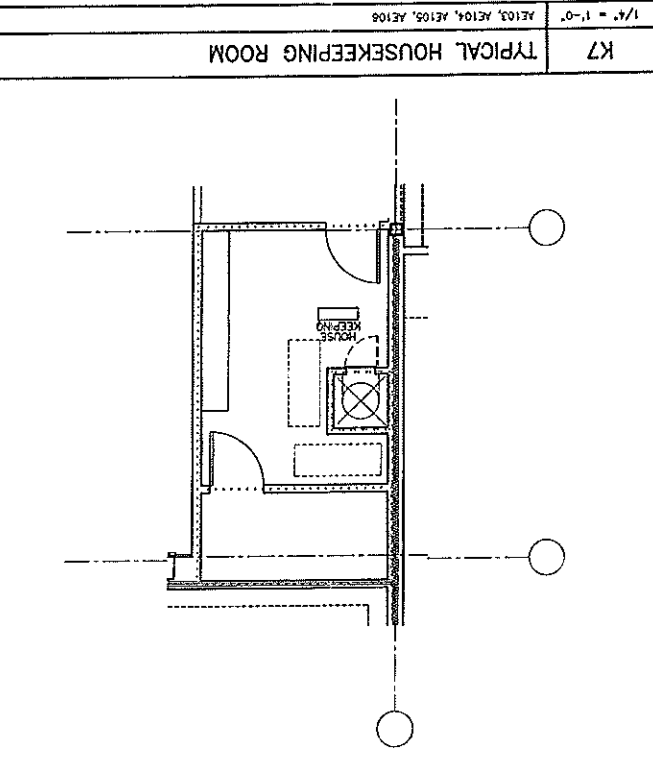
Hilton Garden Inn
65 COMMERCIAL STREET
PORTLAND, MAINE

Allied/Cook CONSTRUCTION
Planners • Managers • Design/Builders
Building Executives Since 1858

OLYMPIA EQUITY INVESTORS

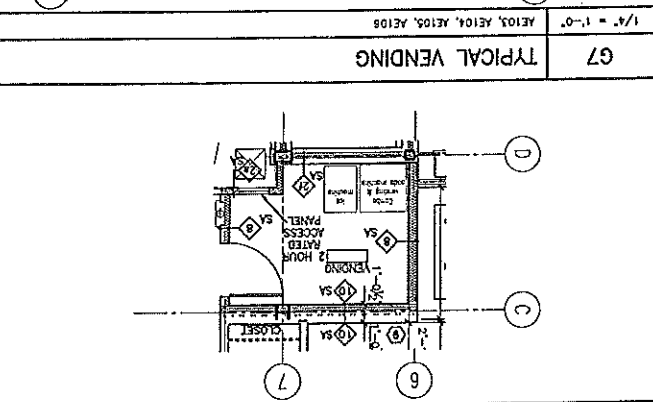
SCOTT SCOTT
Architect

25 Main Street, Portland, ME 04103
Tel: 763-5572



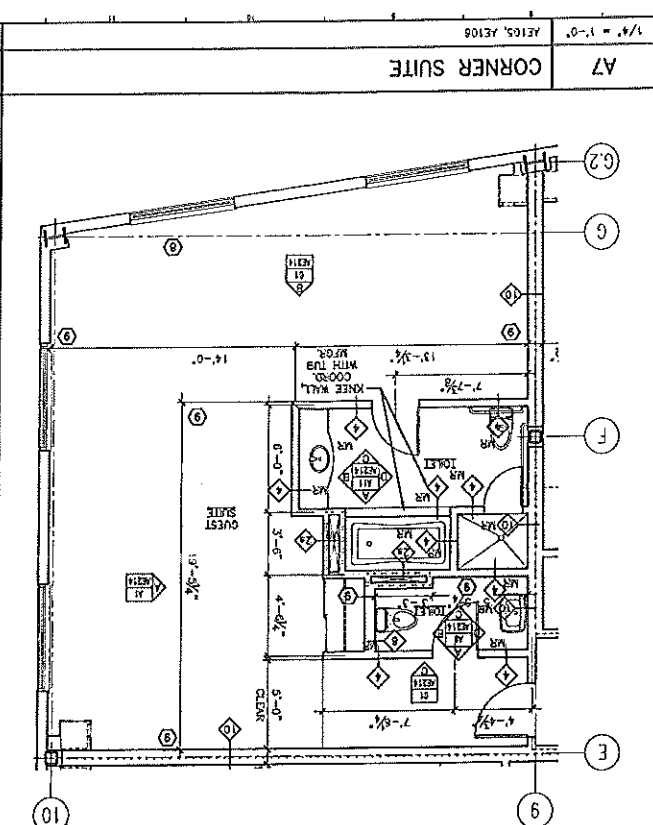
K7 TYPICAL HOUSEKEEPING ROOM

1/4" = 1'-0" AE103, AE104, AE105, AE109



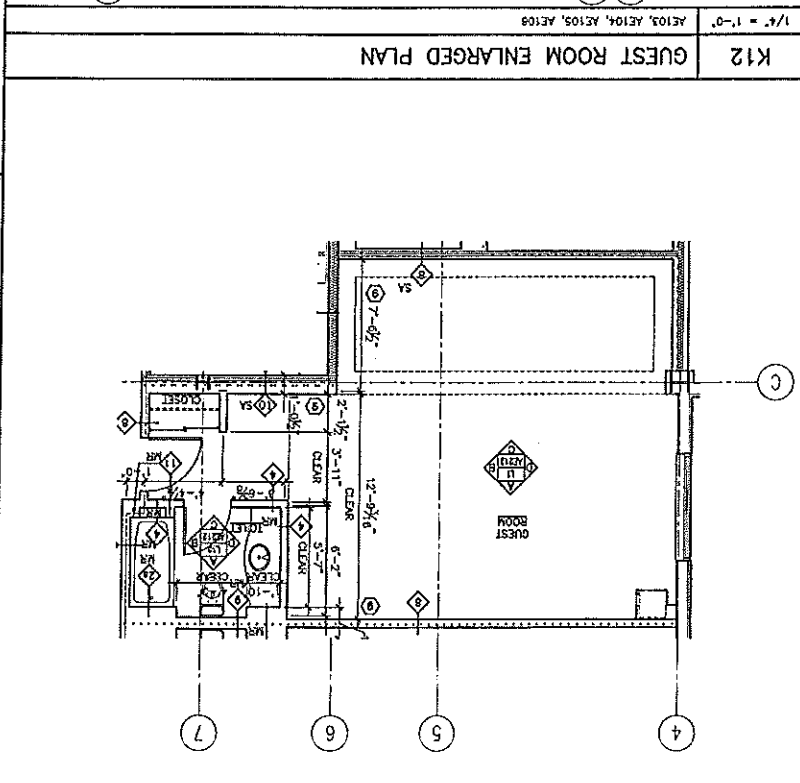
G7 TYPICAL VENDING

1/4" = 1'-0" AE103, AE104, AE105, AE109



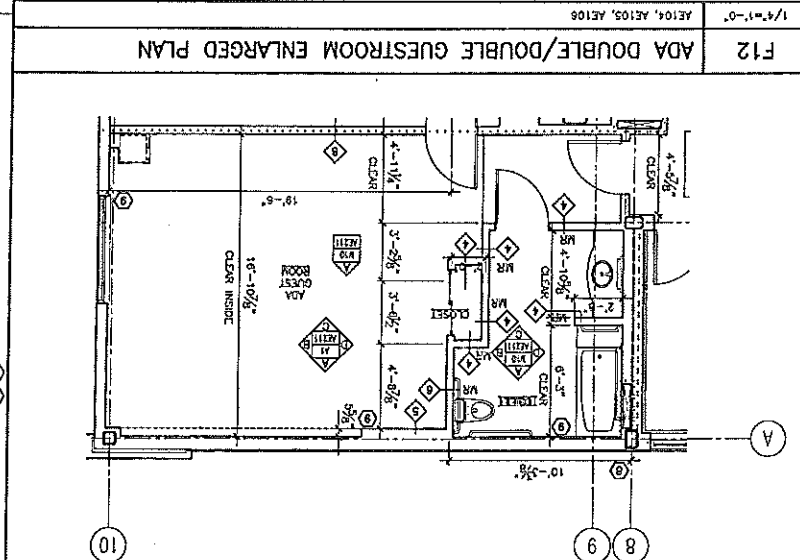
A7 CORNER SUITE

1/4" = 1'-0" AE103, AE108



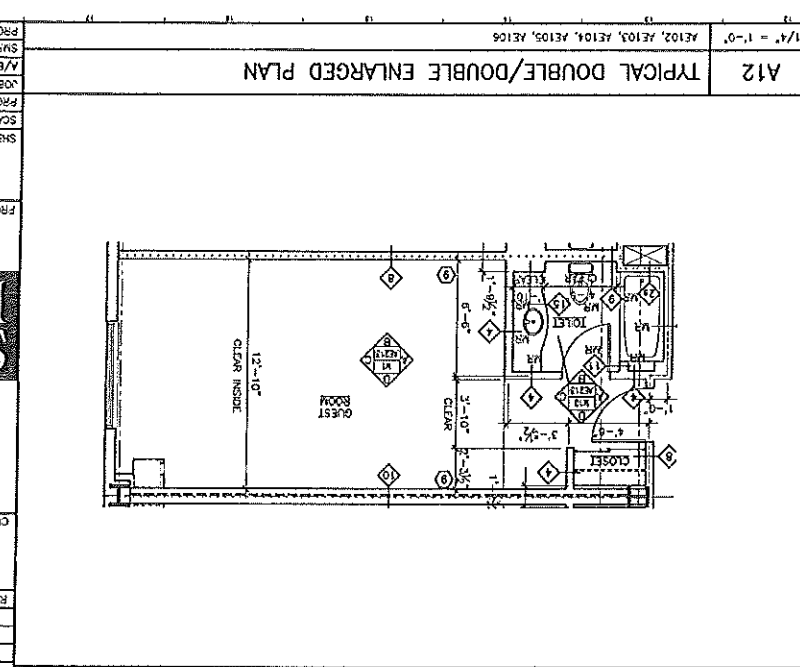
K12 GUEST ROOM ENLARGED PLAN

1/4" = 1'-0" AE103, AE104, AE105, AE109



F12 ADA DOUBLE/DOUBLE GUESTROOM ENLARGED PLAN

1/4" = 1'-0" AE104, AE105, AE108



A12 TYPICAL DOUBLE/DOUBLE ENLARGED PLAN

1/4" = 1'-0" AE102, AE103, AE104, AE105, AE108

REV.	DESCRIPTION	DATE
0	CONSTRUCTION DOCUMENTS	5-29-02

CURRENT ISSUE STATUS:
CONSTRUCTION DOCUMENTS
 5-29-02

PROJECT:
HILTON GARDEN INN
 65 COMMERCIAL STREET
 FORTLAUD, FLORIDA

ARCHITECTURE ENGINEERING PLANNING & DESIGN
SM RT
 11400 SW 11th St., Suite 100
 Fort Lauderdale, FL 33325
 Tel: (954) 773-3344
 Fax: (954) 773-1073

SHEET TITLE:
ENLARGED FLOOR PLANS

SCALE: AS NOTED
 DATE: 5-29-02

PROJECT NO.: 02004
 SHEET NO.: AE403

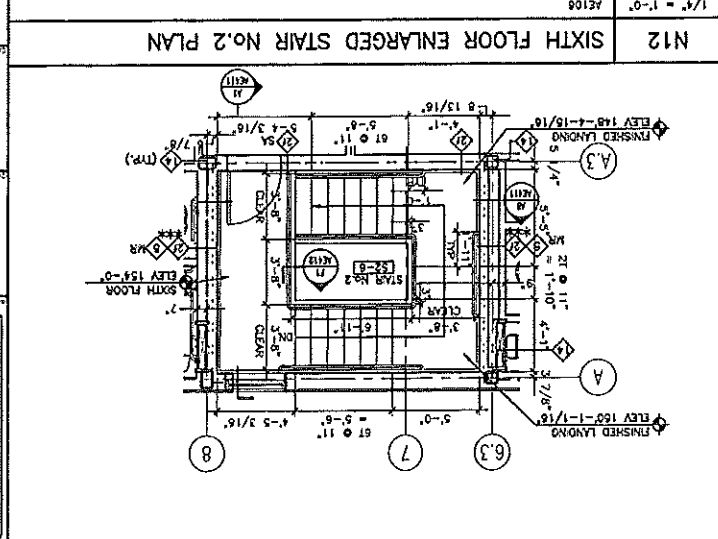
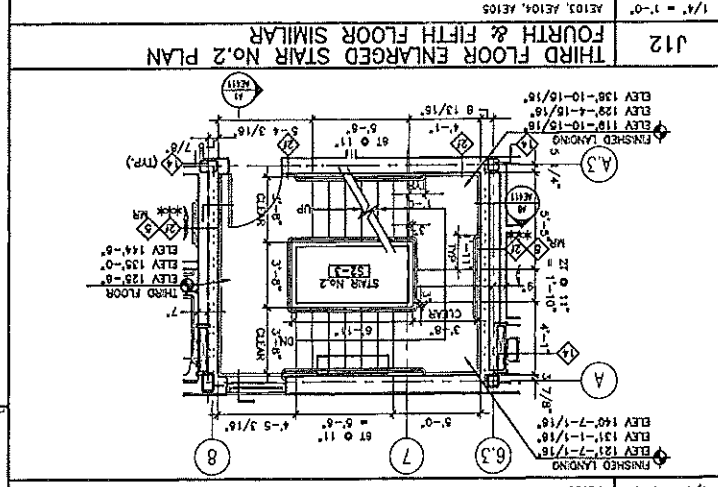
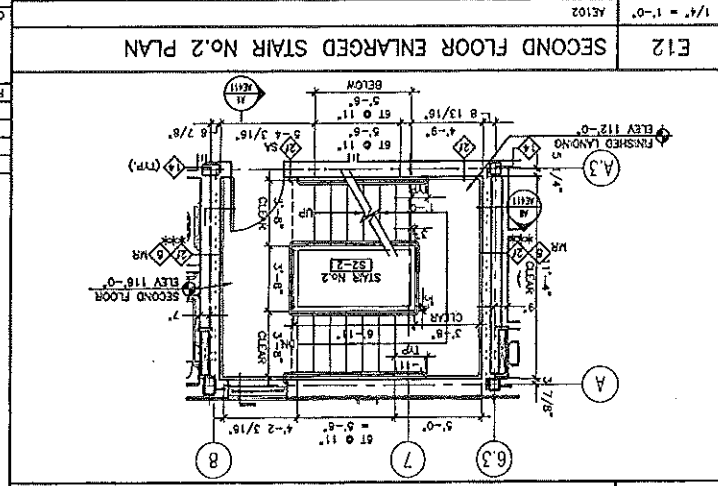
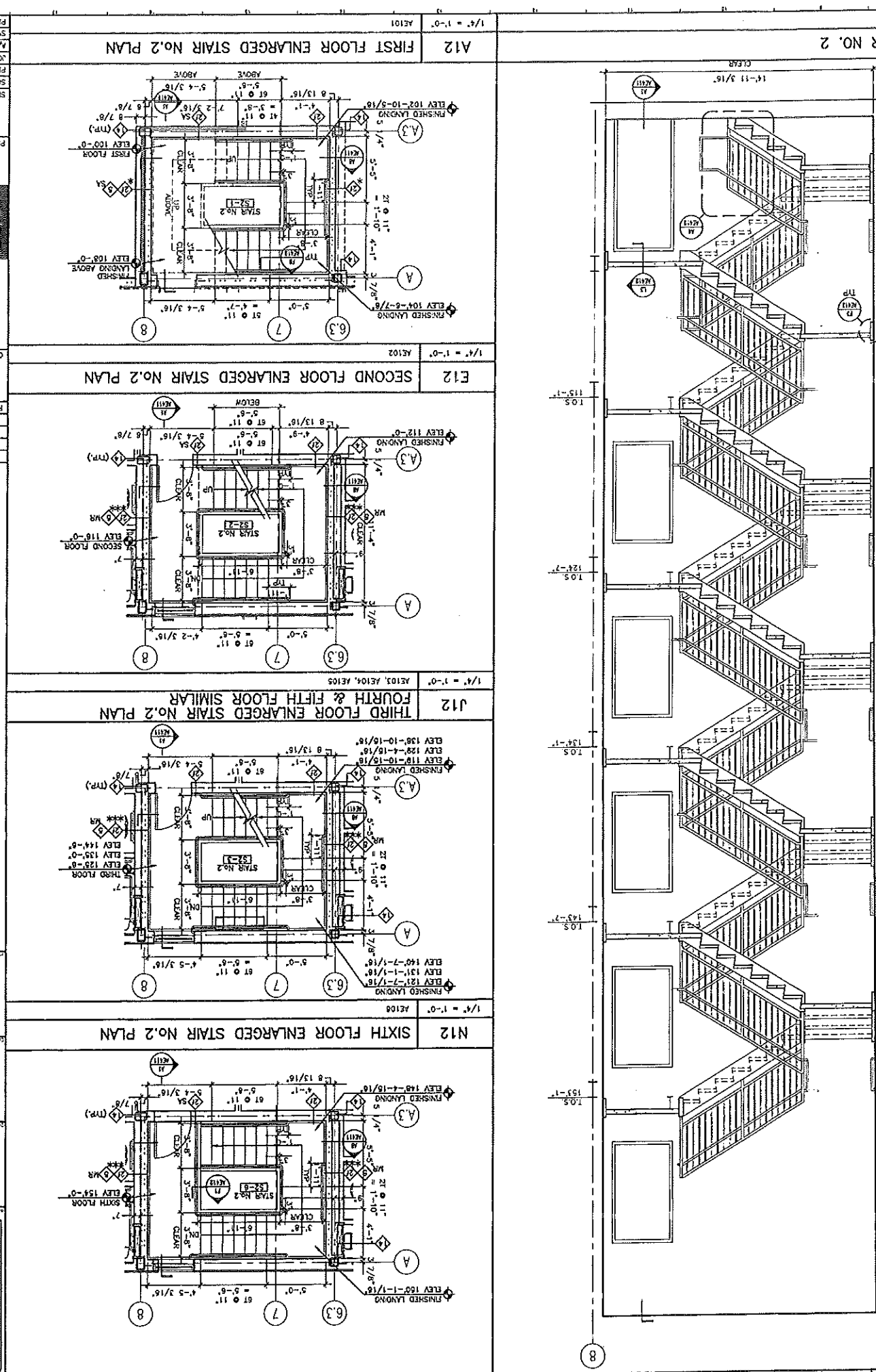
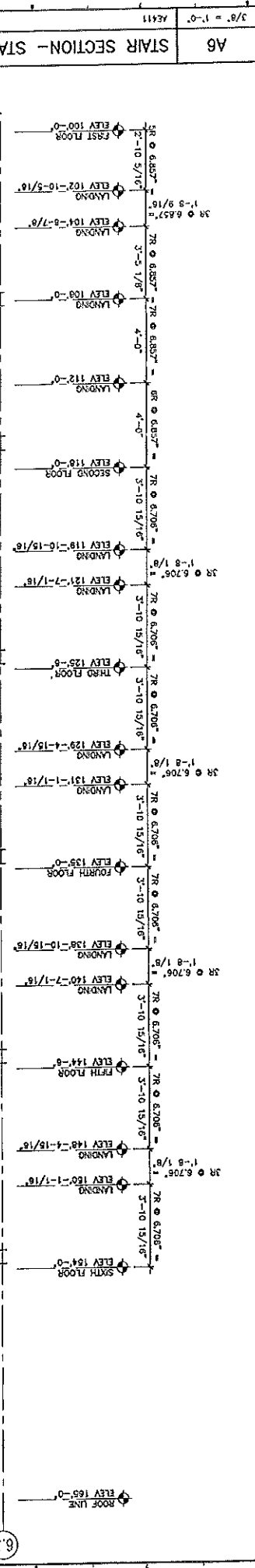
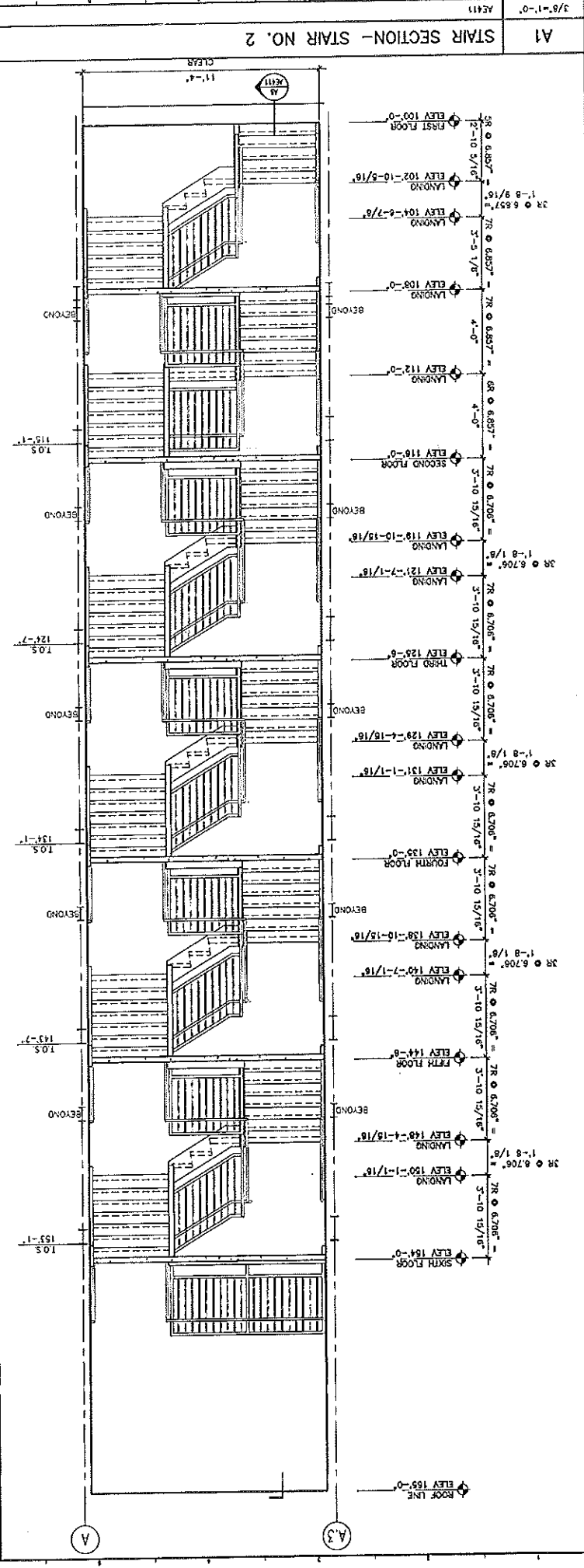
- NOTES:
- DO NOT SCALE THE DRAWINGS.
 - EACH TRADE TO PROVIDE SMOKE OR FIRE SEALANT AT PARTITIONS AS REQUIRED FOR WALL TYPE. ALL SEALANT, FIRE STOPPING, AND SMOKE STOPPING ASSEMBLIES SHALL BE U.L. LISTED.
 - DIMENSIONS ARE FACE OF CONCRETE, FACE OF MASONRY, AND CENTERLINE OF STUD PARTITIONS, UNLESS INDICATED OTHERWISE.
 - REFER TO SHEET 2222 FOR TYPICAL MOUNTING HEIGHTS OF MISCELLANEOUS ITEMS.
 - REFER TO ALL CONSTRUCTION DOCUMENTS FOR REQUIREMENTS WHICH MAY AFFECT THE WORK IN ANOTHER AND COORDINATE WORK.
 - REFERENCE DETAILS FOR ADDITIONAL DIMENSIONAL INFORMATION.
 - ROOM LINES SHALL BE LOCATED 4" FROM CORNER IN STUD PARTITIONS UNLESS INDICATED OTHERWISE.
 - DIMENSION FROM COLUMN LINE.
 - DIMENSION FROM FACE OF PARTITION.

Hilton Garden Inn
 65 COMMERCIAL STREET
 FORTLAUD, FLORIDA

Allied/COOK CONSTRUCTION
 Planners • Managers • Design-builders
 Building Experience Since 1958

SCOTT SCOTT
 Architects
 11400 SW 11th St., Suite 100
 Fort Lauderdale, FL 33325
 Tel: (954) 773-3344
 Fax: (954) 773-1073

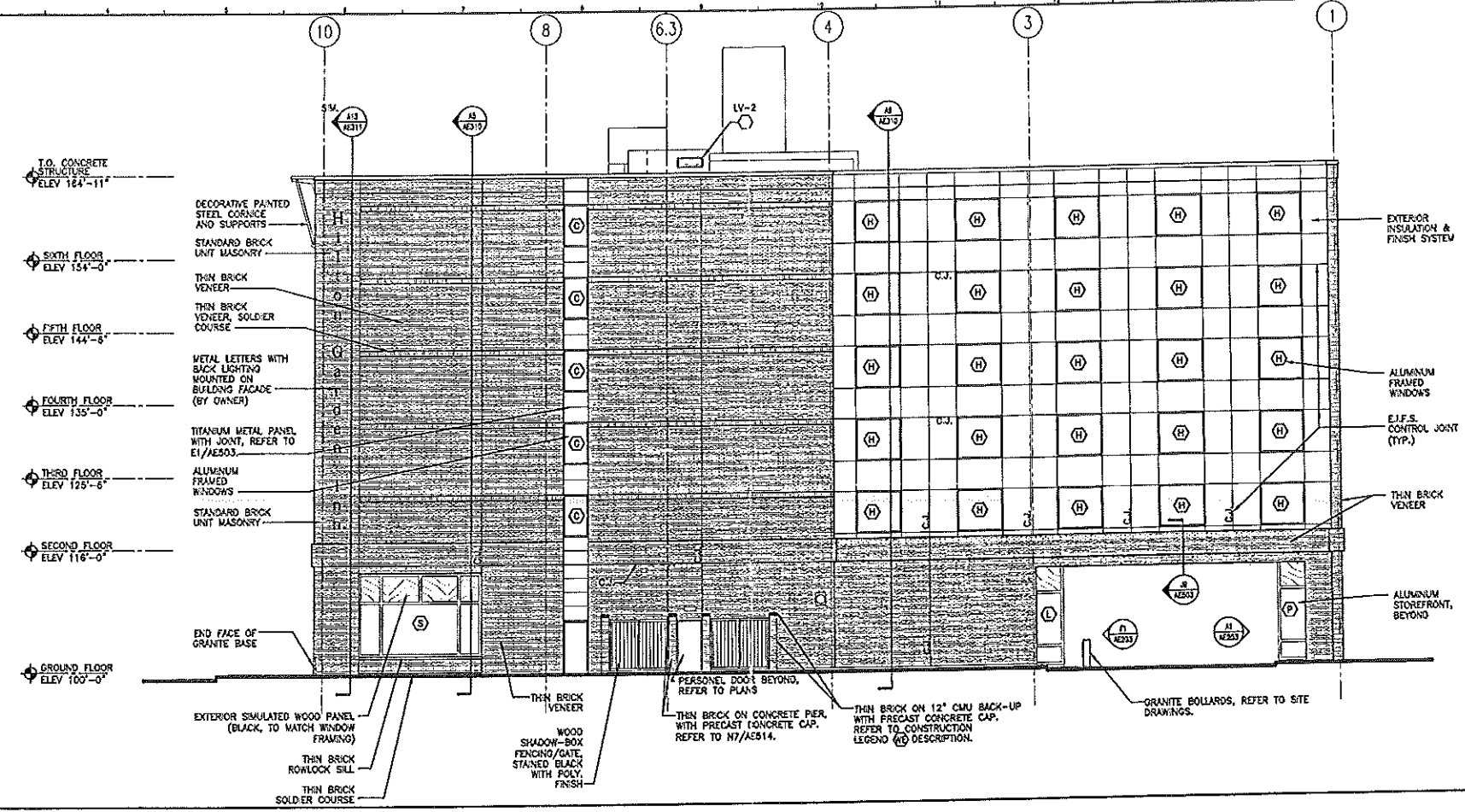
OLYMPIA EQUITY INVESTORS



<p>Hilton Garden Inn 65 Commercial Street Portland, Maine</p>		<p>OLYMPIA EQUITY INVESTORS</p>	
<p>Allied/Cook CONSTRUCTION Planners • Managers • Design-builders Building Excellence Since 1958</p>		<p>SCOTT & BROWN ARCHITECTS 27 Park Street, Suite 400 Portland, ME 04101 Tel: 781.452.5272</p>	
<p>SMRT 144 Fore Street, Suite 111 Portland, Maine 04101 Tel: 603.779.1070</p>		<p>Professional Engineer No. 2003 JUDY JOHNSON</p>	
<p>ARCHITECTURE ENGINEERING PLANNING</p>		<p>PROJECT NORTH</p>	
<p>65 COMMERCIAL STREET PORTLAND, MAINE</p>		<p>ENLARGED STAIR PLANS AND SECTIONS</p>	
<p>PROJECT MANAGER: JUDY JOHNSON JOB CAP/DRAWN: MWO DATE: 5-29-02</p>		<p>AS NOTED SCALE: 5/8" = 1'-0"</p>	
<p>SHEET TITLE: ENLARGED STAIR PLANS AND SECTIONS</p>		<p>SHEET NO.: AE411</p>	
<p>PROJECT NO.: AE411-2004 SWGT CAD FILE: AE411-2004 PROJECT NO.: 02004</p>		<p>DATE: 5-29-02</p>	

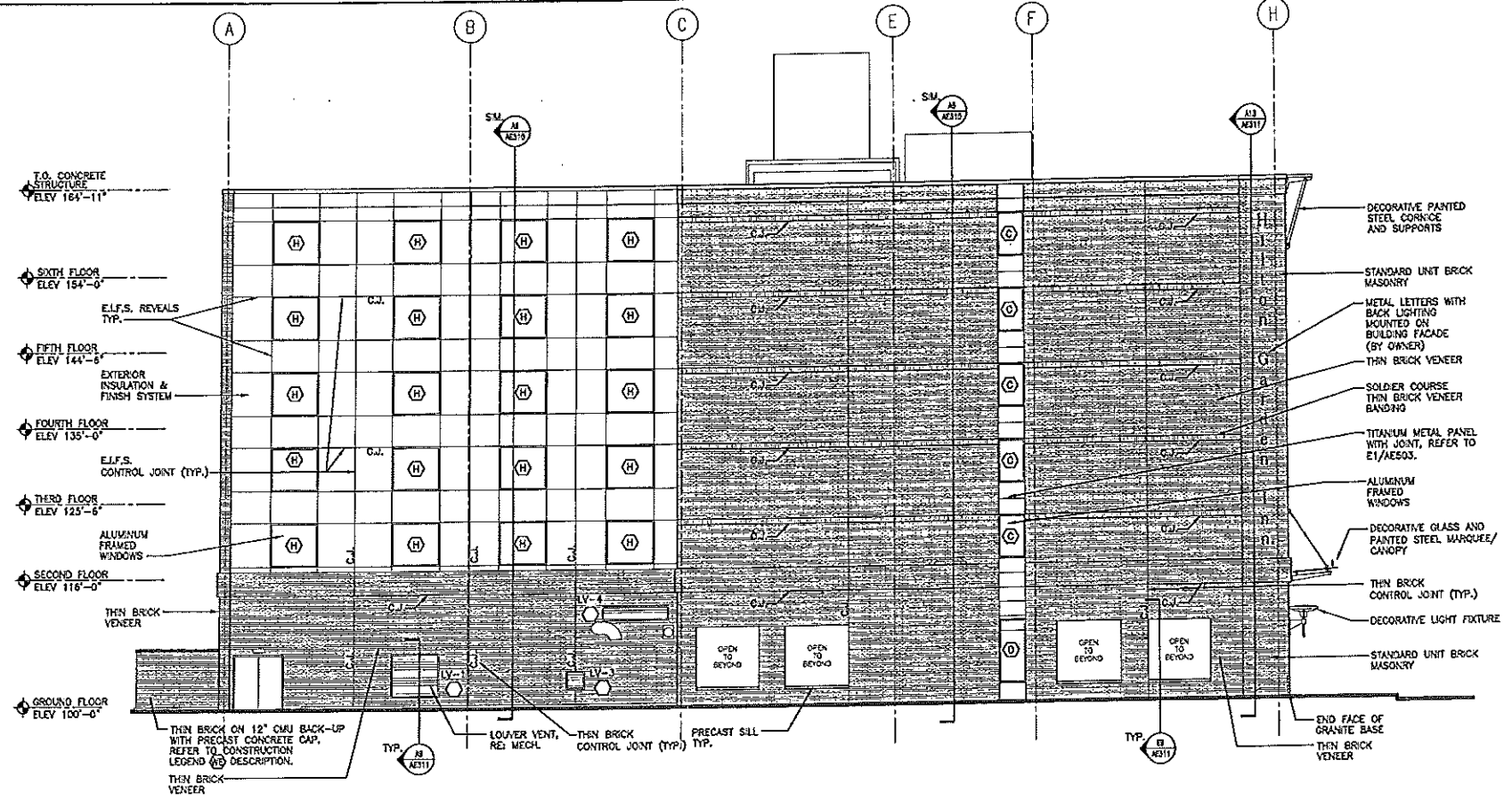
REV.	DESCRIPTION	DATE
0	CONSTRUCTION DOCUMENTS	5-29-02

CURRENT ISSUE STATUS:
CONSTRUCTION DOCUMENTS
5-29-02



J1 FORE STREET ELEVATION

1/8" = 1'-0" AE101, AE102, AE103, AE104, AE105, AE106



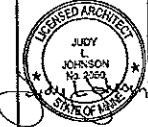

A1 WEST ELEVATION

1/8" = 1'-0" AE101, AE102, AE103, AE104, AE105, AE106

0	CONSTRUCTION DOCUMENTS	5-29-02
REV.	DESCRIPTION	DATE

**CONSTRUCTION DOCUMENTS
5-29-02**

CURRENT ISSUE STATUS:

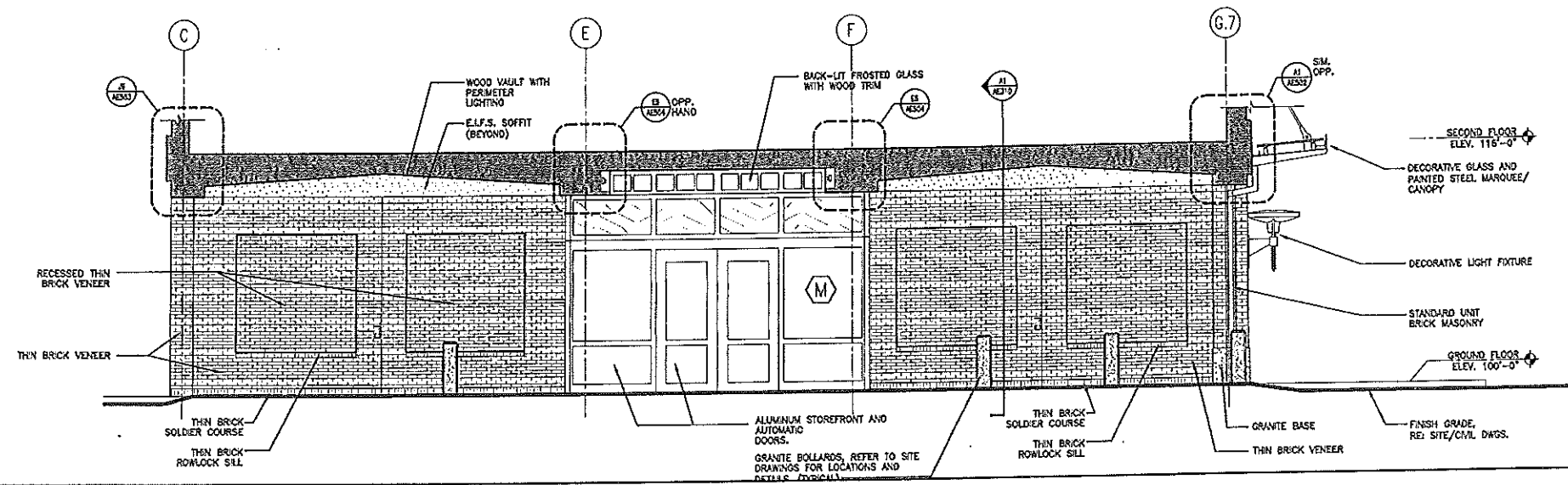
ARCHITECTURE ENGINEERING PLANNING
SMRT
144 Fore Street, 7th Fl., Box 111
Portland, Maine 04104
Tel: (207) 778-3444
Fax: (207) 778-1072

**HILTON GARDEN INN
65 COMMERCIAL STREET
PORTLAND, MAINE**

EXTERIOR ELEVATIONS

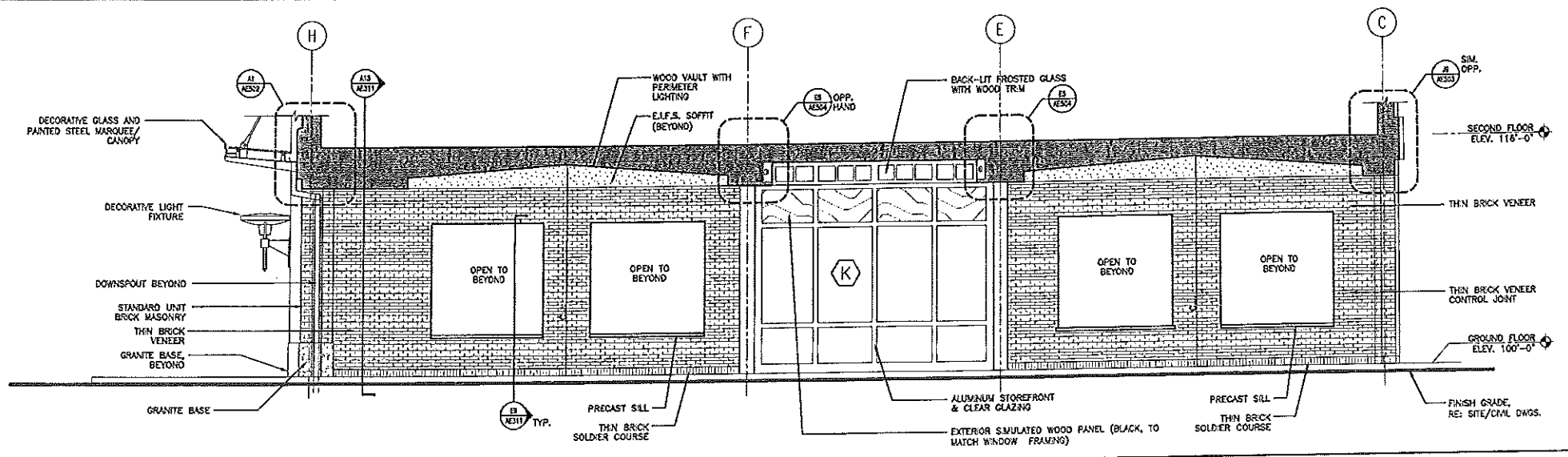
SHEET TITLE:		DATE:	5-29-02
SCALE:	AS NOTED	GRAPHIC SCALE:	0'
PROJECT MANAGER:	JLJ		
JOB CAP/DRYAN:	JEB/VMO		
A/E OF RECORD:	JLJ	SHEET No.	
SMRT CAD FILE:	AE202-02004		AE202
PROJECT No.	02004		

L1 -



F1 PORTE COCHERE - EAST ELEVATION

1/4" = 1'-0" AE101, AE201, AE202



A1 PORTE COCHERE - WEST ELEVATION

1/4" = 1'-0" AE101, AE201, AE202

0	CONSTRUCTION DOCUMENTS	5-29-02
REV.	DESCRIPTION	DATE

CONSTRUCTION DOCUMENTS
5-29-02

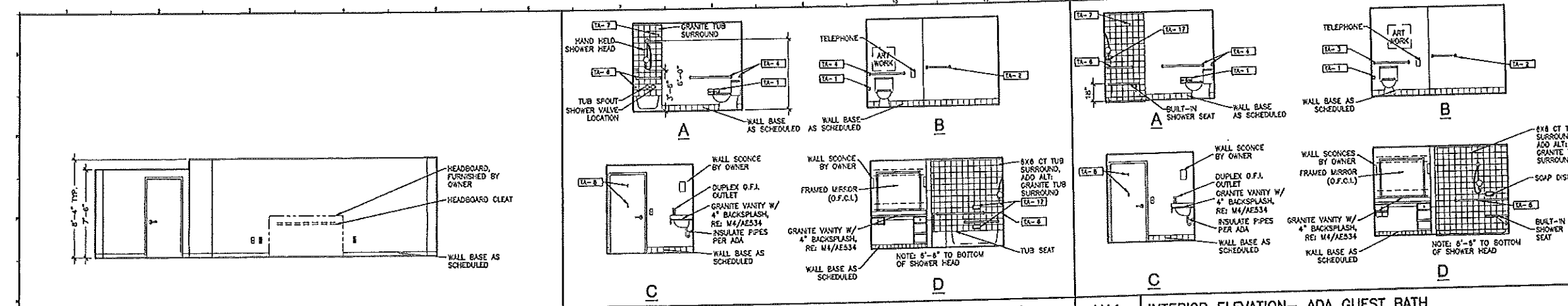


SM RT ARCHITECTURE ENGINEERING PLANNING
5033
144 Fore Street, P.O. Box 618
Portland, Maine 04104
Tel: (207) 772-3446
Fax: (207) 772-1070

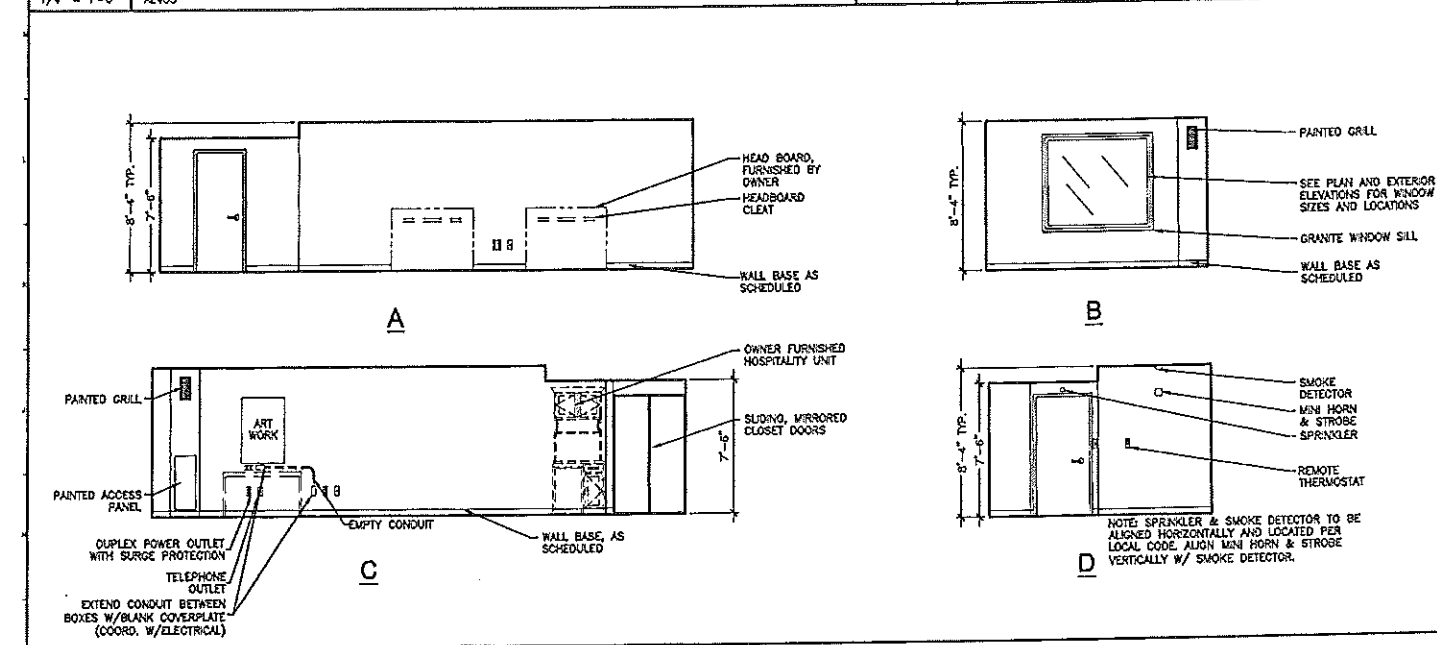
HILTON GARDEN INN
65 COMMERCIAL STREET
PORTLAND, MAINE

PROJECT: **EXTERIOR ELEVATIONS**

SHEET TITLE:	AS NOTED	DATE:	5-29-02
PROJECT MANAGER:	JLJ	GRAPHIC SCALE:	0" = 1'
JOB CAP/DRWN:	MVD		
A/E OF RECORD:	JLJ	SHEET No.	AE203
SMRT CAD FILE:	AE203-02004		
PROJECT No.	02004		

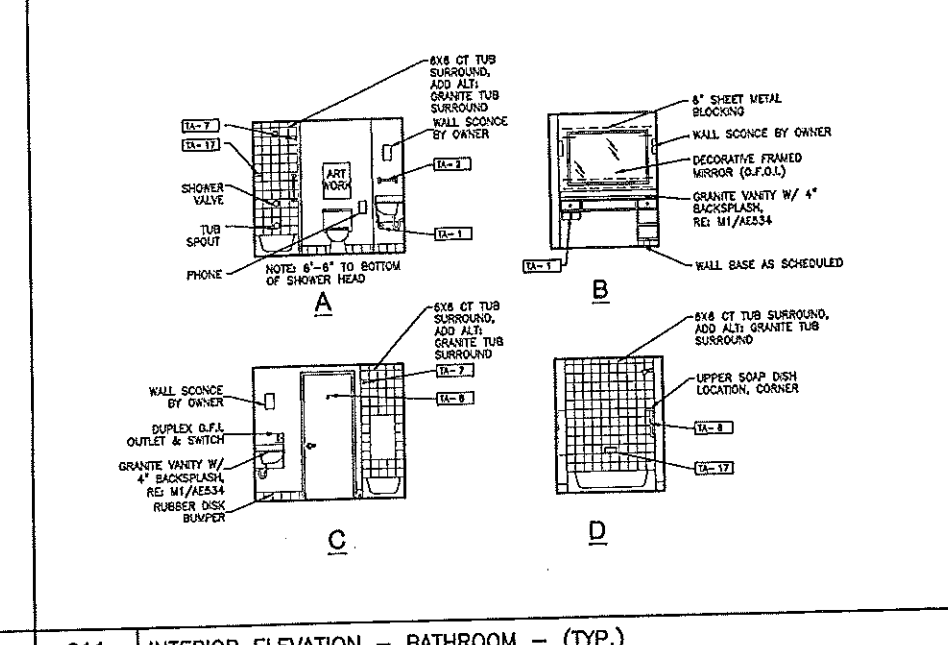


M11 INTERIOR ELEVATION - ADA GUEST BATH
ROOM NO. 232, 332
1/4" = 1'-0" AE402

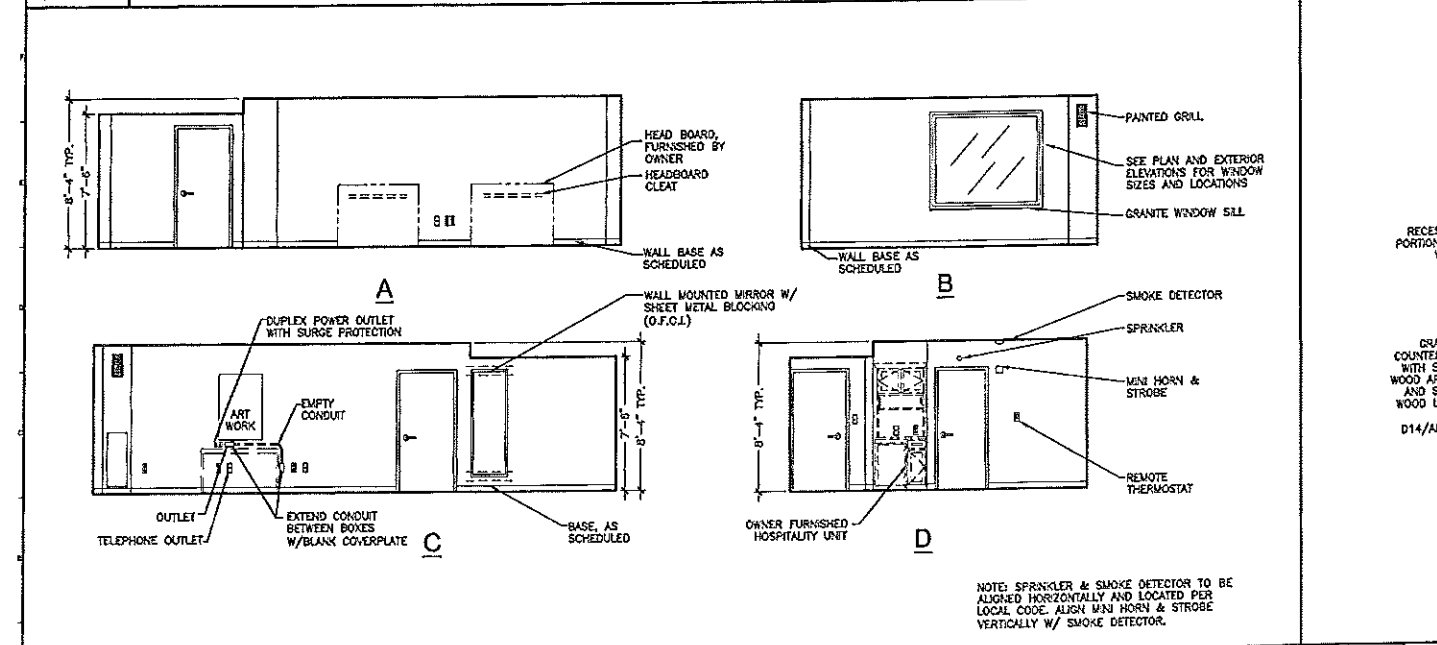


M1 INTERIOR ELEVATION - A.D.A. GUEST ROOM - KING (A-TYP.)
ROOM NUMBER 432, 532, 632
1/4" = 1'-0" AE403

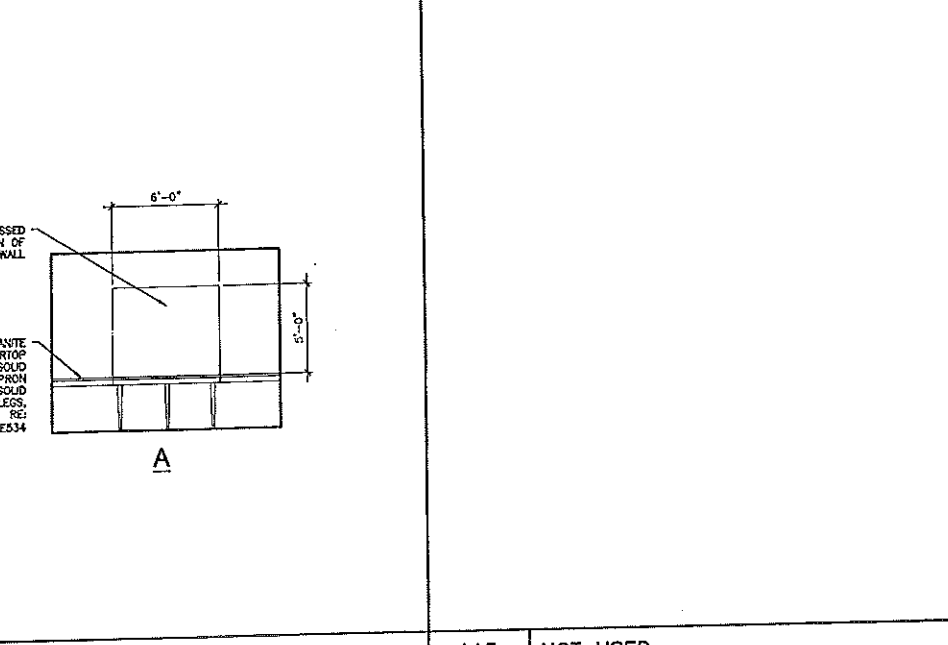
A10 INTERIOR ELEVATION - A.D.A. GUEST BATHROOM (TYP.)
ROOM NUMBER 432, 532, 632
1/4" = 1'-0" AE402



G11 INTERIOR ELEVATION - BATHROOM - (TYP.)
ROOM NUMBER TYPICAL
1/4" = 1'-0" AE402



G1 INTERIOR ELEVATION - TYPICAL GUEST ROOM - DOUBLE/DOUBLE
ROOM NUMBER TYPICAL
1/4" = 1'-0" AE402



A10 INTERIOR ELEVATION - VESTIBULE 103
ROOM NUMBER 103
1/4" = 1'-0" AE401A

ACCESSORY SCHEDULE
(COMPLETE SCHEDULE ON AE231)

TAG	DESCRIPTION
TA-1	DOUBLE ROLL TOILET PAPER HOLDER
TA-2	18" TOWEL BAR MOUNT 18" ABOVE VANITY COUNTERTOP.
TA-3	38" GRAB BAR
TA-4	42" GRAB BAR
TA-5	48" GRAB BAR
TA-6	24" GRAB BAR: VERTICALLY INSTALLED 3'-8" A.F.F. AND LOCATED HORIZONTALLY 1'-0" FROM CENTERLINE OF TUB
TA-7	SHOWER ROD: MOUNT 6'-6" A.F.F.
TA-8	ROBE HOOK: MOUNT STANDARD ROBE HOOKS AT 6'-9" A.F.F. AND ADA ROOM ROBE HOOKS AT 4'-0" A.F.F.
TA-9	FOLDING SHOWER SEAT: 1'-6" TO TOP OF SEAT
TA-10	PAPER TOWEL WASTE RECEPTACLE
TA-11	TOILET PAPER HOLDER W/ SHELF: 19" A.F.F. TO CENTERLINE
TA-12	SOAP DISPENSER, DECK MOUNT
TA-13	NAPKIN TAMPON VENDOR
TA-14	NAPKIN DISPOSAL
TA-15	PAPER TOWEL DISPENSER
TA-16	MOP HOLDER
TA-17	CERAMIC SOAP DISH (SEE SPEC SECTION 09310) MOUNT SOAP DISHES AT 2'-0" A.F.F. AND 4'-0" A.F.F.
TA-18	30" GRAB BAR

NOTE:
1. SEE MECHANICAL AND ELECTRICAL DRAWINGS FOR EQUIPMENT AND DEVICES

CONSTRUCTION DOCUMENTS
5-29-02

REV. DESCRIPTION DATE

SMRT ARCHITECTURE ENGINEERING PLANNING
144 Fore Street/P.O. Box 618
Portland, Maine 04104
Tel: (207) 772-3848
Fax: (207) 772-1072

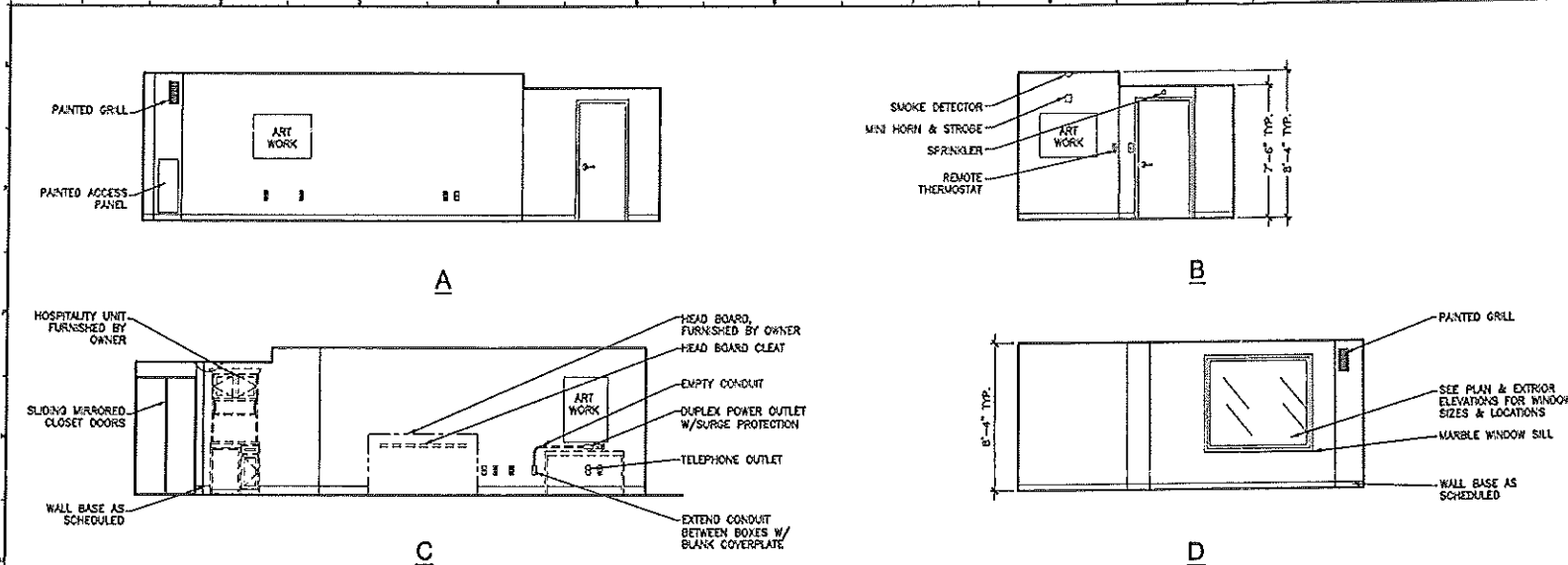
HILTON GARDEN INN
65 COMMERCIAL STREET
PORTLAND, MAINE

PROJECT: **INTERIOR ELEVATIONS**

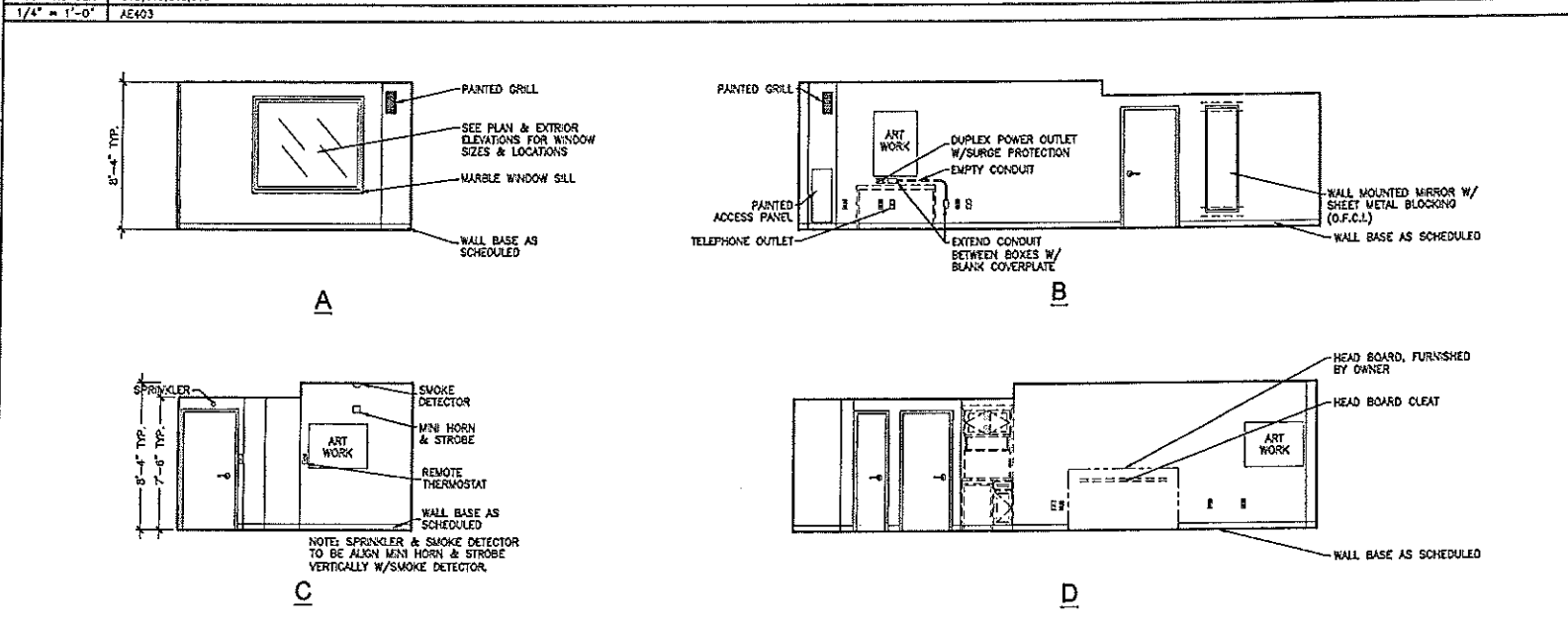
SHEET TITLE: **AE211**
SCALE: AS NOTED DATE: 5-29-02
PROJECT MANAGER: J.L.J. GRAPHIC SCALE: 0" = 1'-0"
JOB CAP/DRAWN: L.M.G.
A/E OF RECORD: J.L.J. SHEET NO.
SVRT CAD FILE: AE211-02004
PROJECT No. 02004

A1 INTERIOR ELEVATION - A.D.A. GUEST ROOM - DOUBLE/DOUBLE (TYP.)
ROOM NUMBER 232, 332, 432, 532, 632
1/4" = 1'-0" AE402, AE403

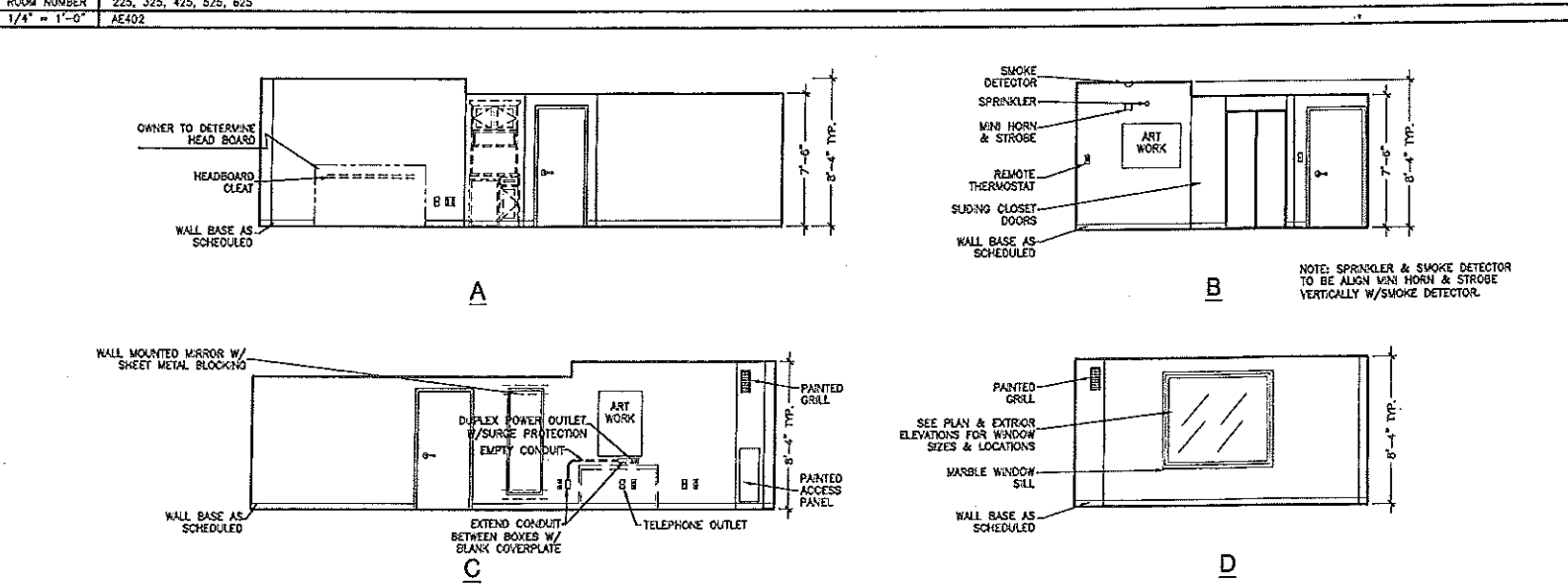
A13 NOT USED



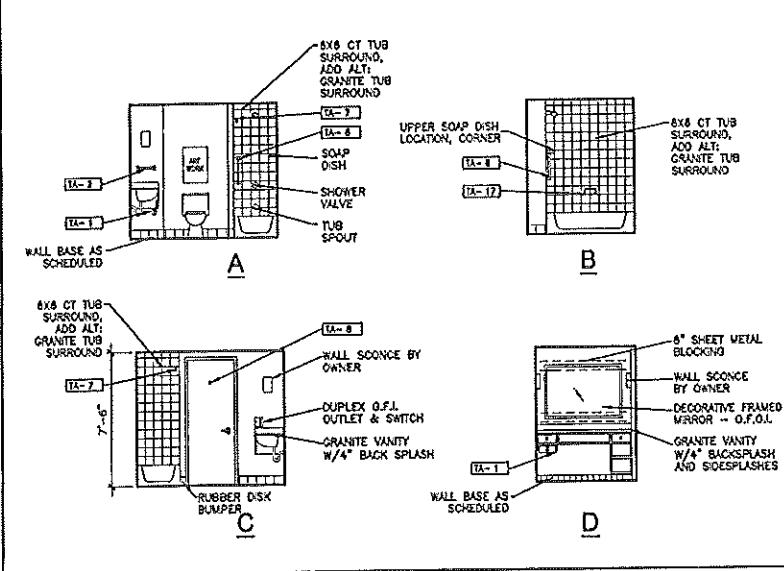
L1 INTERIOR ELEVATIONS - INSIDE CORNER SUITE (A-TYP.)
 ROOM NUMBER 319, 419, 519, 619
 1/4" = 1'-0" AE403



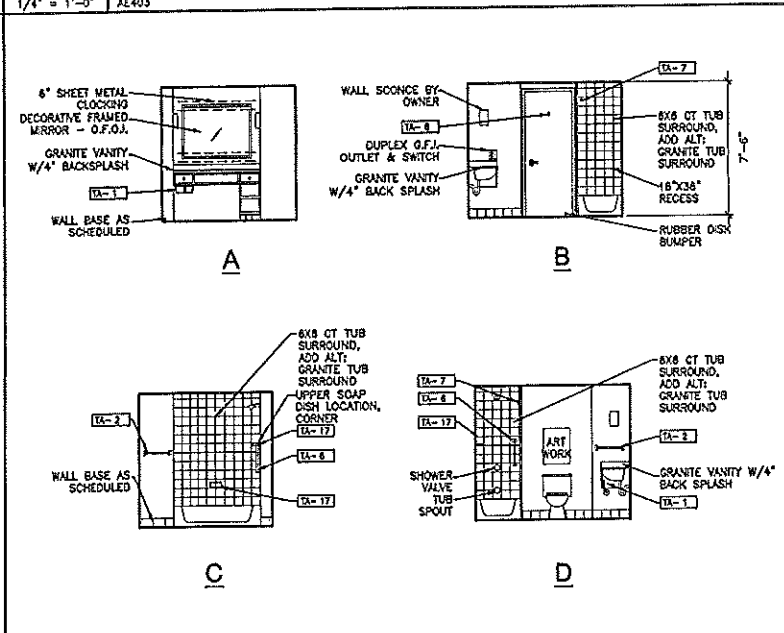
F1 INTERIOR ELEVATION - END GUEST RM (A-TYP.)
 ROOM NUMBER 225, 325, 425, 525, 625
 1/4" = 1'-0" AE402



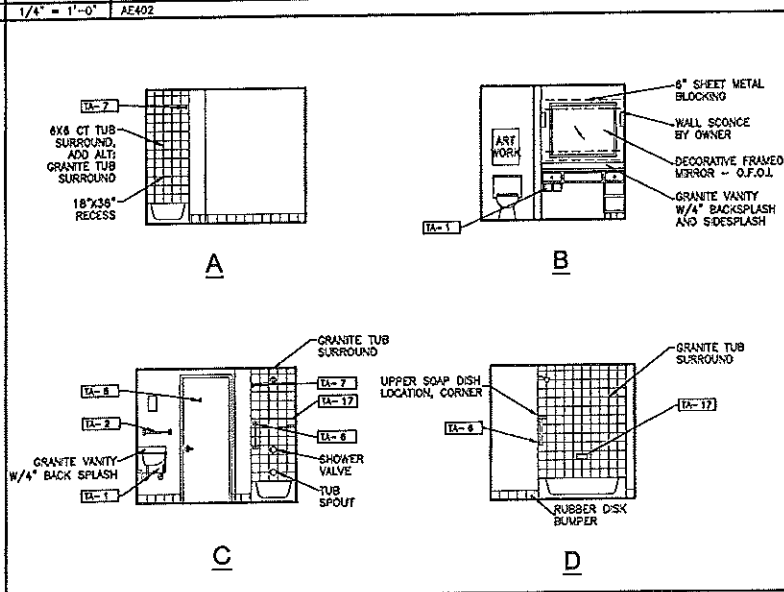
A1 INTERIOR ELEVATION - END GUEST ROOM (A-TYP.)
 ROOM NUMBER 225, 325, 425, 525, 625
 1/4" = 1'-0" AE402



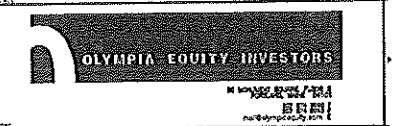
L10 INTERIOR ELEVATIONS - INSIDE CORNER SUITE
 ROOM NUMBER 319, 419, 519, 619
 1/4" = 1'-0" AE403



F10 INTERIOR ELEVATION - BATHROOM
 ROOM NUMBER 201, 301, 401, 501, 601
 1/4" = 1'-0" AE402



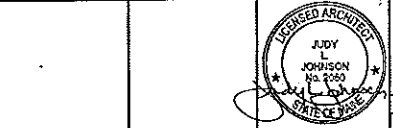
A10 INTERIOR ELEVATION - BATHROOM
 ROOM NUMBER 225, 325, 425, 525, 625
 1/4" = 1'-0" AE402



ACCESSORY SCHEDULE	
TAG	DESCRIPTION
TA-1	DOUBLE ROLL TOILET PAPER HOLDER
TA-2	18" TOWEL BAR MOUNT 18" ABOVE VANITY COUNTERTOP
TA-3	38" GRAB BAR
TA-4	42" GRAB BAR
TA-5	48" GRAB BAR
TA-6	24" GRAB BAR VERTICALLY INSTALLED 3'-6" A.F.F. AND LOCATED HORIZONTALLY 1'-0" FROM CENTERLINE OF TUB
TA-7	SHOWER ROD; MOUNT 6'-8" A.F.F.
TA-8	ROBE HOOK; MOUNT STANDARD ROBE HOOKS AT 5'-9" A.F.F. AND ADA ROBE HOOKS AT 4'-0" A.F.F.
TA-9	FOLDING SHOWER SEAT; 1'-6" TO TOP OF SEAT
TA-10	PAPER TOWEL WASTE RECEPTACLE
TA-11	TOILET PAPER HOLDER; 19" A.F.F. TO CENTERLINE
TA-12	SOAP DISPENSER
TA-13	NAPKIN TAMPON VENDOR
TA-14	NAPKIN DISPOSAL
TA-15	PAPER TOWEL DISPENSER
TA-16	WOP HOLDER
TA-17	CERAMIC SOAP DISH (SEE SPEC SECTION 09310) MOUNT SOAP DISHES AT 2'-0" A.F.F. AND 4'-0" A.F.F.
TA-18	30" GRAB BAR

REV.	DESCRIPTION	DATE

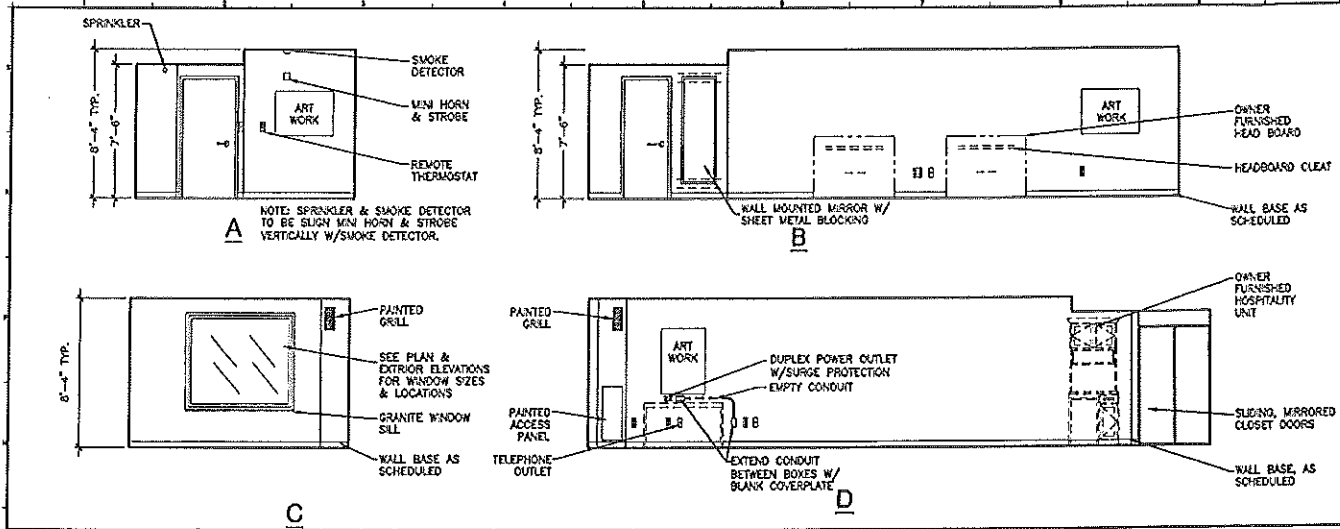
CONSTRUCTION DOCUMENTS
 5-29-02



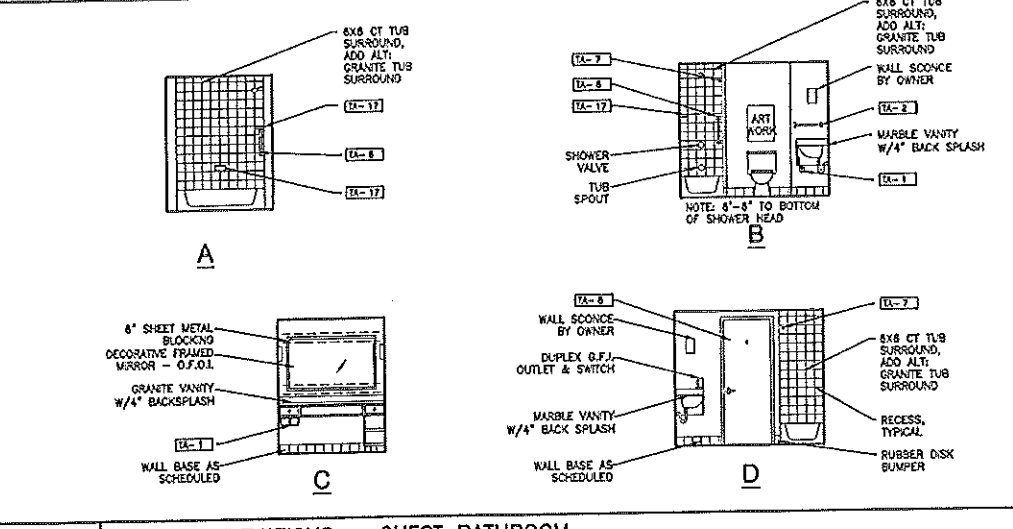
ARCHITECTURE ENGINEERING PLANNING
 SMRT
 144 Fore Street, Box 618
 Portland, Maine 04104
 Tel: (207) 772-3446
 Fax: (207) 772-1200

HILTON GARDEN INN
 65 COMMERCIAL STREET
 PORTLAND, MAINE

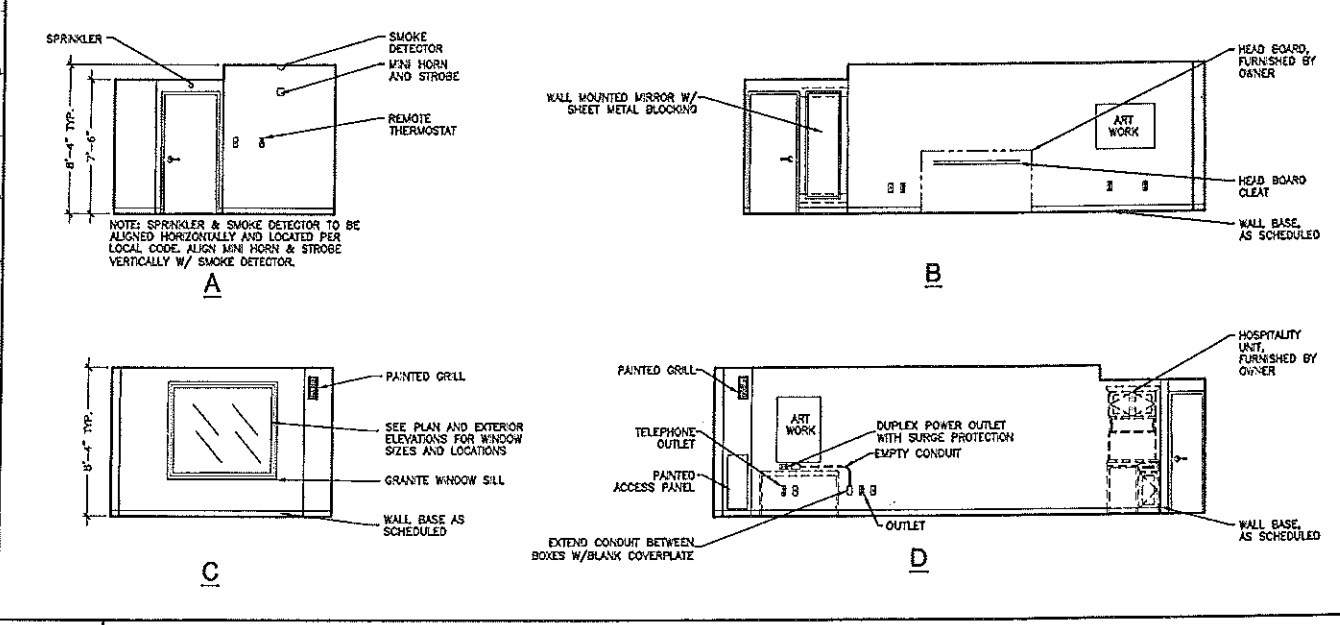
PROJECT: INTERIOR ELEVATIONS	
SHEET TITLE:	AS NOTED
SCALE:	DATE: 5-29-02
PROJECT MANAGER: J.L.	GRAPHIC SCALE: 0"
JOB CAP/DRW: LMG	A/E OF RECORD: J.L.
A/E OF RECORD: J.L.	SHEET No. AE212
SMART CAD FILE: AE212-02004	PROJECT No. 02004



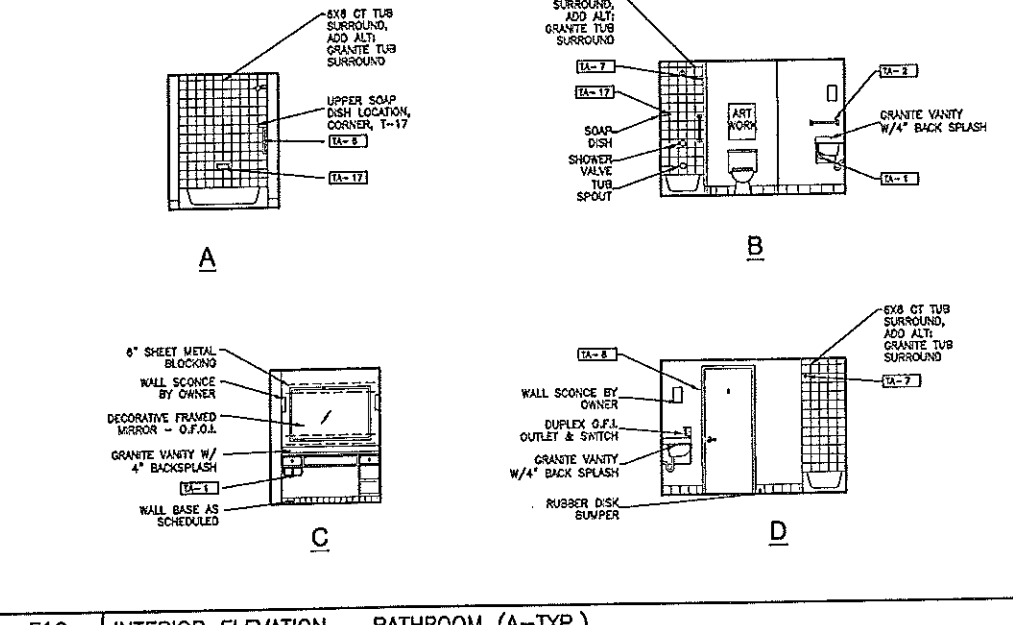
M1 INTERIOR ELEVATIONS - GUEST ROOM
 ROOM NUMBER: TYPICAL
 1/4" = 1'-0" AE403



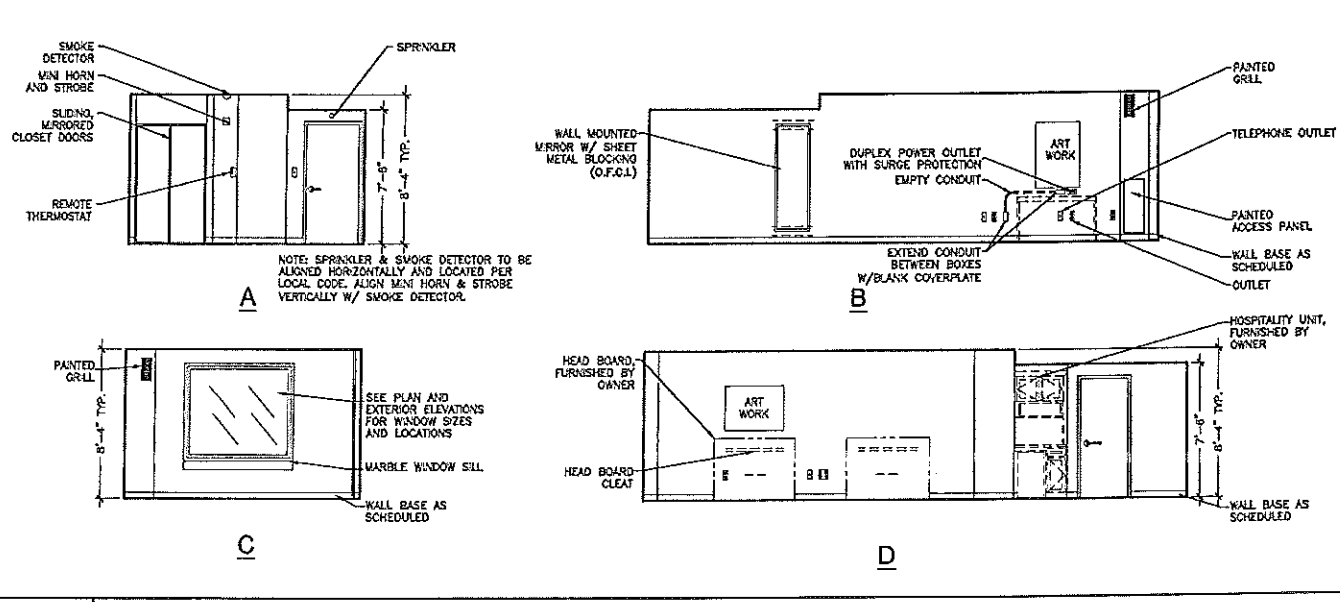
M10 INTERIOR ELEVATIONS - GUEST BATHROOM
 ROOM NUMBER: TYPICAL
 1/4" = 1'-0" AE403



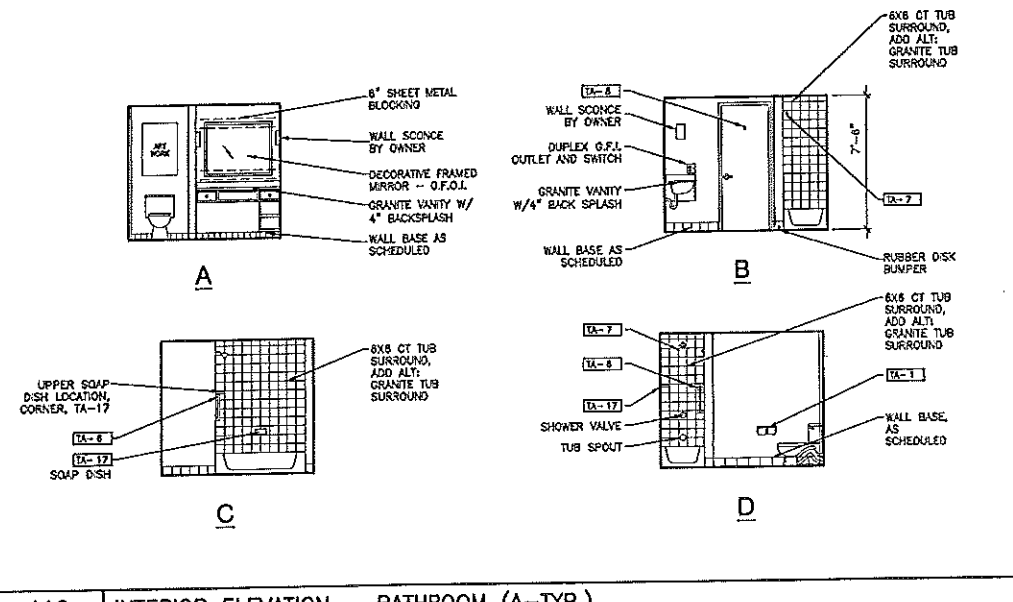
F1 INTERIOR ELEVATION - END GUEST RM (A-TYP.)
 ROOM NUMBER: 312, 412, 512, 612
 1/4" = 1'-0" AE402



F10 INTERIOR ELEVATION - BATHROOM (A-TYP.)
 ROOM NUMBER: 312, 412, 512, 612
 1/4" = 1'-0" AE402



A1 INTERIOR ELEVATION - END GUEST ROOM (A-TYP.)
 ROOM NUMBER: 202, 302, 402, 502, 602
 1/4" = 1'-0" AE402



A10 INTERIOR ELEVATION - BATHROOM (A-TYP.)
 ROOM NUMBER: 202, 302, 402, 502, 602
 1/4" = 1'-0" AE402

Hilton Garden Inn
 65 COMMERCIAL STREET
 Portland, Maine

OLYMPIA EQUITY INVESTORS
 100 WATER STREET, SUITE 1000
 PORTLAND, ME 04101
 TEL: 734-2200 FAX: 734-2201

ALLIED/COOK CONSTRUCTION
 Planners • Managers • Design/Builders
 Building Excellence Since 1958

SCOTT SCOTT
 Architects
 25 State Street, Suite 200
 Portland, ME 04101
 Tel: 734-2444 Fax: 734-2445

ACCESSORY SCHEDULE

TAO	DESCRIPTION
TA-1	DOUBLE ROLL TOILET PAPER HOLDER
TA-2	18" TOWEL BAR MOUNT 18" ABOVE VANITY COUNTERTOP
TA-3	36" GRAB BAR
TA-4	42" GRAB BAR
TA-5	48" GRAB BAR
TA-6	24" GRAB BAR VERTICALLY INSTALLED 3'-0" A.F.F. AND LOCATED HORIZONTALLY 1'-0" FROM CENTERLINE OF TUB
TA-7	SHOWER ROD MOUNT 6'-0" A.F.F.
TA-8	ROBE HOOK MOUNT STANDARD ROOM ROBE HOOKS AT 5'-9" A.F.F. AND ADA ROOM ROBE HOOKS AT 4'-0" A.F.F.
TA-9	FOLDING SHOWER SEAT 1'-0" TO TOP OF SEAT
TA-10	PAPER TOWEL WASTE RECEPTACLE
TA-11	TOILET PAPER HOLDER: 18" A.F.F. TO CENTERLINE
TA-12	SOAP DISPENSER
TA-13	NAPKIN TAMPON VENDOR
TA-14	NAPKIN DISPOSAL
TA-15	PAPER TOWEL DISPENSER
TA-16	HOP HOLDER
TA-17	SOAP DISH MOUNT SOAP DISHES AT 2'-0" A.F.F. AND 4'-0" A.F.F.
TA-18	30" GRAB BAR

NOTE:
 1. SEE MECHANICAL AND ELECTRICAL DRAWINGS FOR EQUIPMENT AND DEVICES

REV.	DESCRIPTION	DATE

CONSTRUCTION DOCUMENTS
 5-29-02

CURRENT ISSUE STATUS:

REGISTERED ARCHITECT
 JUDY L. JOHNSON
 No. 2550
 STATE OF MAINE

SM RT ARCHITECTURE ENGINEERING PLANNING
 SHEET
 144 Fore Street, P.O. Box 618
 Portland, Maine 04104
 Tel: (207) 777-3444
 Fax: (207) 777-1070

HILTON GARDEN INN
 65 COMMERCIAL STREET
 PORTLAND, MAINE

PROJECT: INTERIOR ELEVATIONS

SHEET TITLE: INTERIOR ELEVATIONS

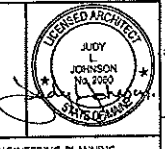
SCALE: AS NOTED	DATE: 5-29-02
PROJECT MANAGER: J.L.J.	GRAPHIC SCALE: 0"
JOB CIP/DRAWN: LMG	SHEET No. AE213
A/E OF RECORD: J.L.J.	PROJECT No. 02004
SVRT CAD FILE: AE213-02004	

ACCESSORY SCHEDULE (COMPLETE SCHEDULE ON AE231)	
TAB	DESCRIPTION
TA-1	DOUBLE ROLL TOILET PAPER HOLDER
TA-2	18" TOWEL BAR MOUNT 18" ABOVE VANITY COUNTERTOP
TA-3	38" GRAB BAR
TA-4	42" GRAB BAR
TA-5	48" GRAB BAR
TA-6	24" GRAB BAR VERTICALLY INSTALLED 3'-8" A.F.F. AND LOCATED HORIZONTALLY 1'-0" FROM CENTERLINE OF TUB
TA-7	SHOWER ROD MOUNT 6'-8" A.F.F.
TA-8	ROBE HOOK MOUNT STANDARD ROOM ROBE HOOKS AT 5'-9" A.F.F. AND ADA ROOM ROBE HOOKS AT 4'-0" A.F.F.
TA-9	FOLDING SHOWER SEAT 1'-8" TO TOP OF SEAT
TA-10	PAPER TOWEL WASTE RECEPTACLE
TA-11	TOILET PAPER HOLDER W/ SHELF: 19" A.F.F. TO CENTERLINE
TA-12	SOAP DISPENSER, DECK MOUNT
TA-13	NAPKIN TAMPON VENDOR
TA-14	NAPKIN DISPOSAL
TA-15	PAPER TOWEL DISPENSER
TA-16	MOP HOLDER
TA-17	CERAMIC SOAP DISH (SEE SPEC SECTION 09310) MOUNT SOAP DISHES AT 2'-0" A.F.F. AND 4'-0" A.F.F.
TA-18	30" GRAB BAR

REV.	DESCRIPTION	DATE

**CONSTRUCTION DOCUMENTS
5-29-02**

CURRENT ISSUE STATUS:

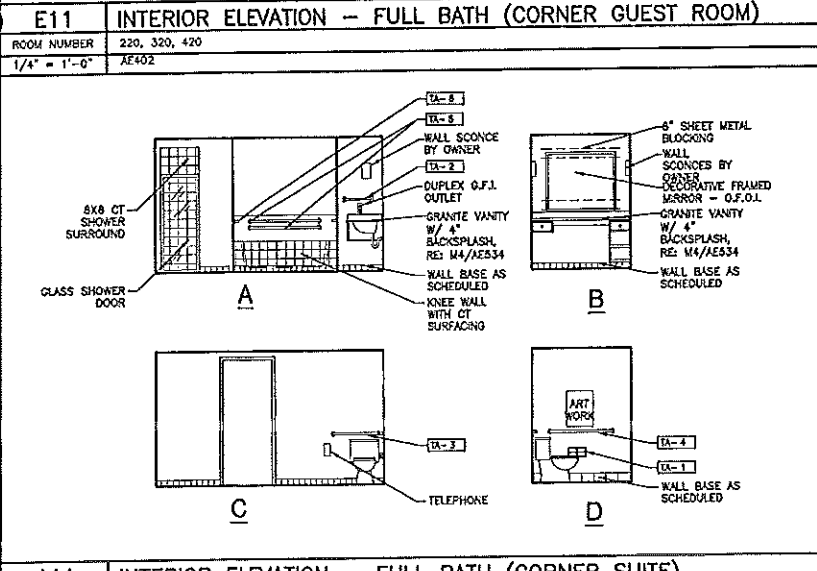
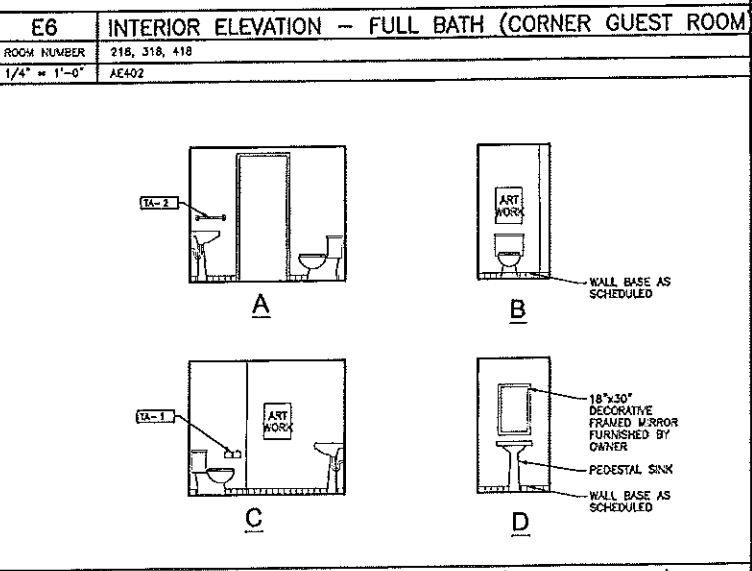
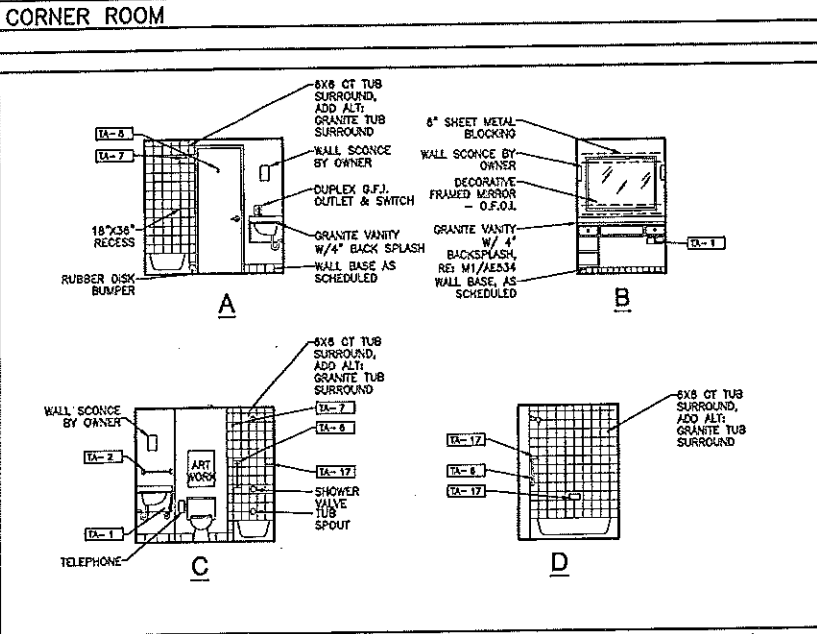
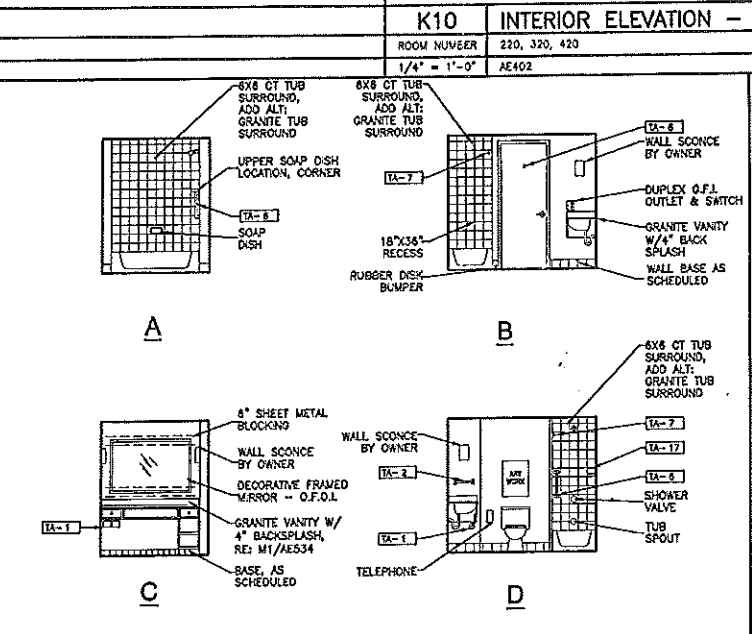
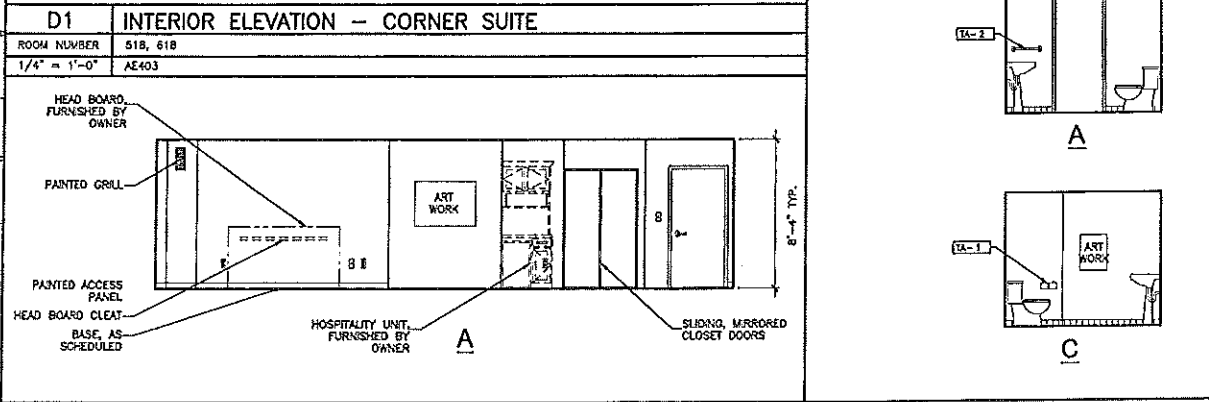
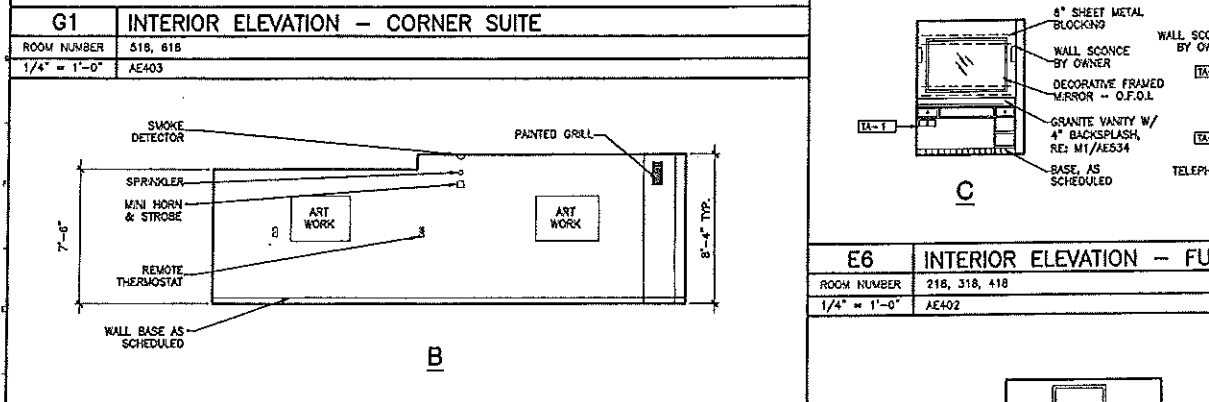
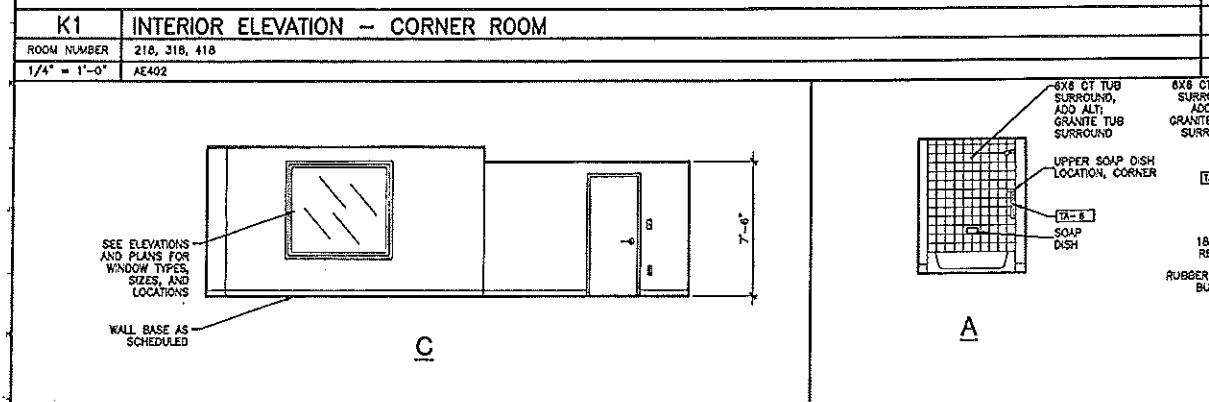
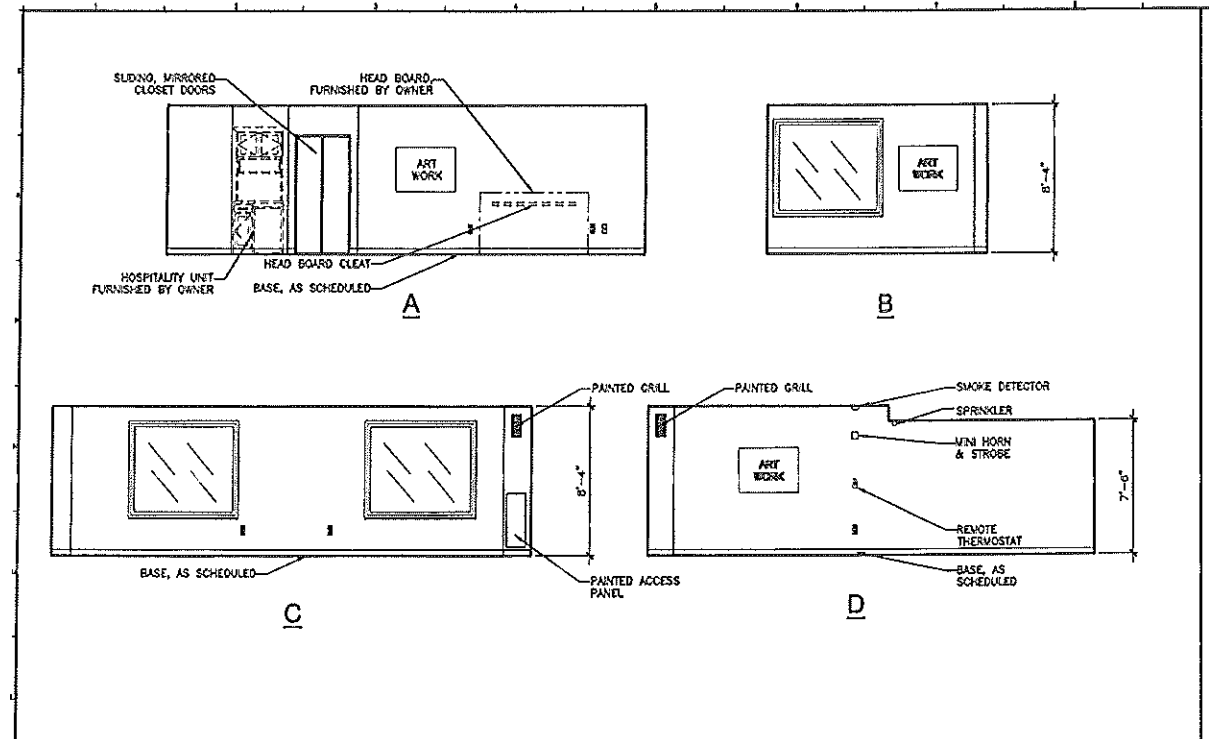


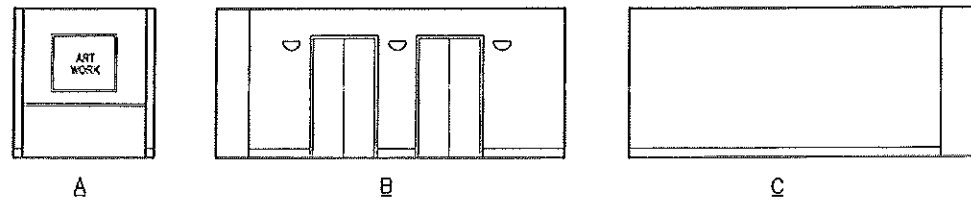
SM RT ARCHITECTURE ENGINEERING PLANNING
SWIT
144 Fore Street, P.O. Box 618
Portland, Maine 04104
Tel: (207) 772-3546
Fax: (207) 772-1573

**HILTON GARDEN INN
65 COMMERCIAL STREET
PORTLAND, MAINE**

PROJECT: **INTERIOR ELEVATIONS**

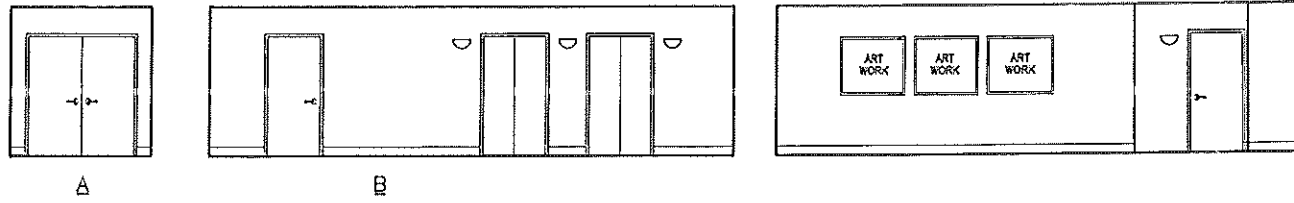
SHEET TITLE:	AS NOTED	DATE:	5-29-02
SCALE:	AS NOTED	GRAPHIC SCALE:	1" = 8'-0"
PROJECT MANAGER:	JLJ	SHEET No.:	AE214
JOB CAP/DRAWN:	LM3	PROJECT No.:	02004
A/E OF RECORD:	JLJ		
SMRT CAD FILE:	AE214-02004		





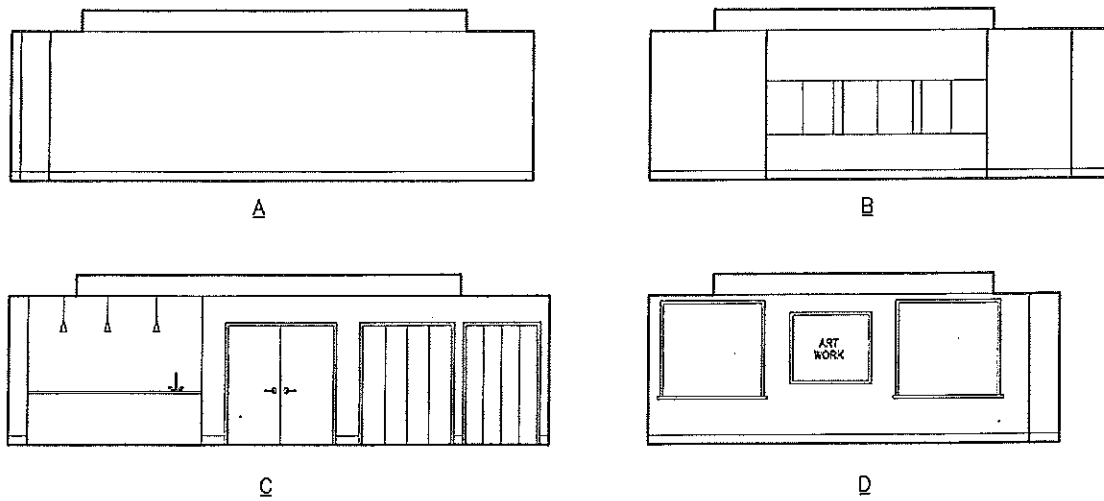
P1 INTERIOR ELEVATION - ELEVATOR LOBBY - TYPICAL FOR FLOORS 3-6

1/4" = 1'-0"



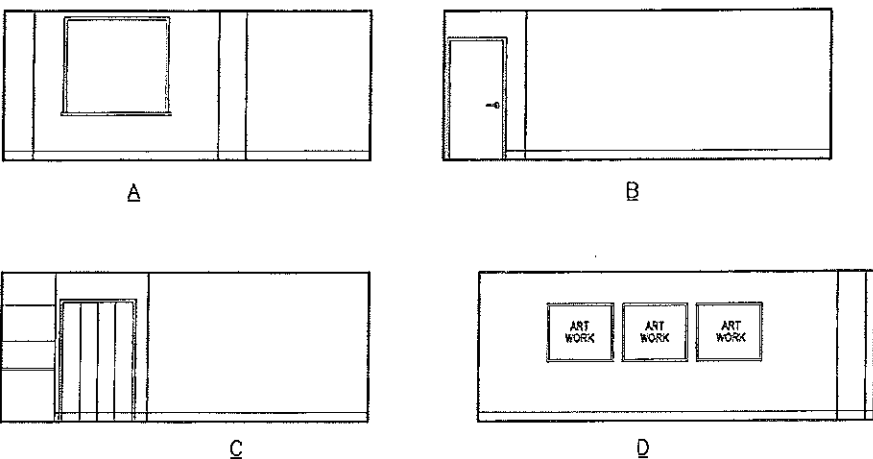
L1 INTERIOR ELEVATION - ELEVATOR LOBBY - SECOND FLOOR

1/4" = 1'-0"



F1 INTERIOR ELEVATION - MEETING ROOM

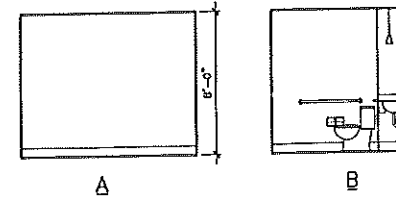
1/4" = 1'-0"



A1 INTERIOR ELEVATION - BOARD ROOM

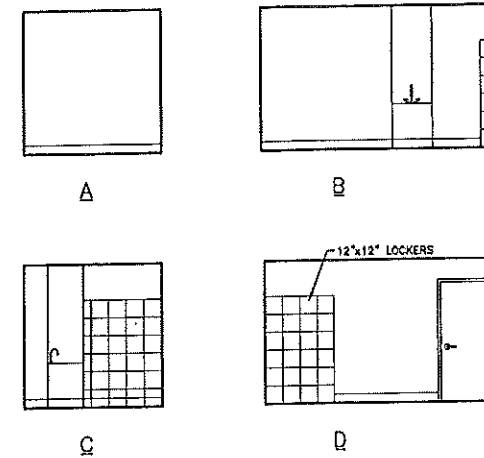
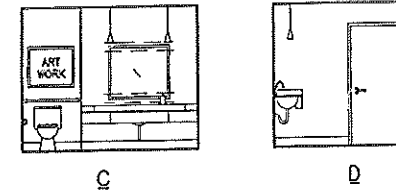
1/4" = 1'-0"

A8 NOT USED



M10 INTERIOR ELEVATION - UNI-SEX TOILET

1/4" = 1'-0"



F10 INTERIOR ELEVATION - BREAK ROOM

1/4" = 1'-0"

Hilton Garden Inn
65 COMMERCIAL STREET
Portland, Maine

OLYMPIA EQUITY INVESTORS

Allied/Cook CONSTRUCTION
Planners • Managers • Design/Builders
Building Excellence Since 1958

SCOTT SCOTT
Architects
21 Aron Street, Portland, ME 04108
Tel: 732-510-2334
Fax: 732-544-7379

REV.	DESCRIPTION	DATE
0	CONSTRUCTION DOCUMENTS	5-29-02

CONSTRUCTION DOCUMENTS
5-29-02

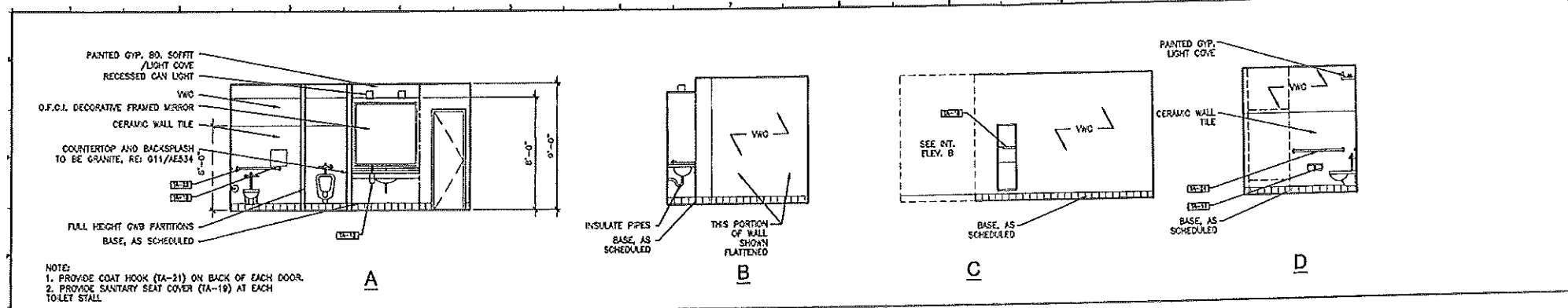
SMRT ARCHITECTURE ENGINEERING PLANNING
6011
144 Fore Street/2nd Fl. Box 618
Portland, Maine 04104
Tel: (207) 776-3545
Fax: (207) 776-1070

HILTON GARDEN INN
65 COMMERCIAL STREET
PORTLAND, MAINE

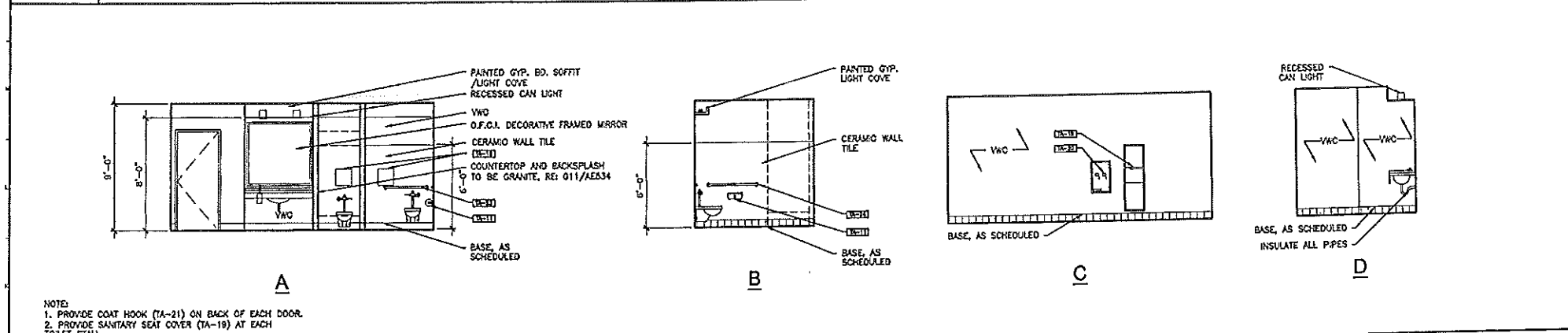
PROJECT: **INTERIOR ELEVATIONS**

SHEET TITLE:	AS NOTED	DATE:	5-29-02
SCALE:		GRAPHIC SCALE:	0" = 1'
PROJECT MANAGER:	JLJ		
JOB CAP/DRAWN:	LMG		
A/E OF RECORD:	JLJ	SHEET No.	
SVMT CAD FILE:	AE216-02004		
PROJECT No.	02004		

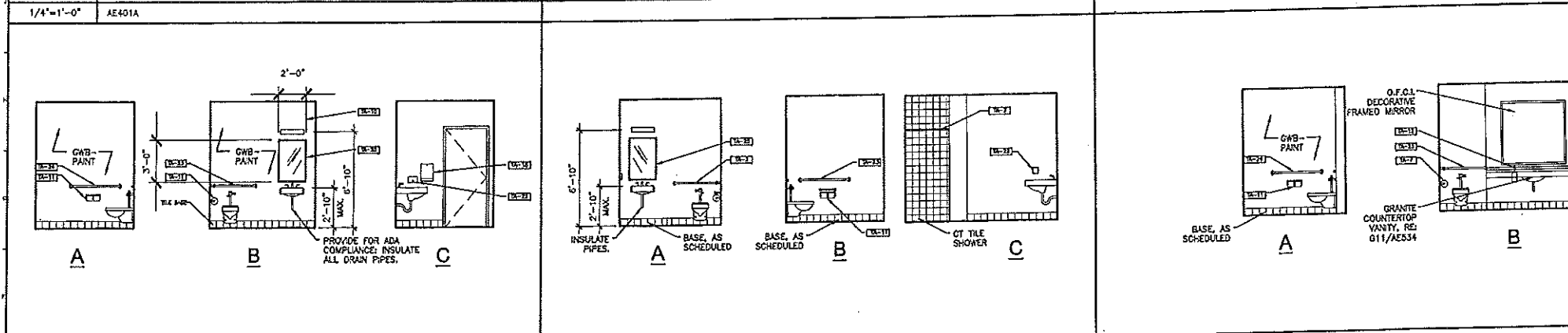
AE216



N1	MENS RESTROOM
1/4"=1'-0"	AE401A



J1	WOMENS RESTROOM
1/4"=1'-0"	AE401A



E1	EMPLOYEE RESTROOM	E5	POOL RESTROOM	E10	UNISEX RESTROOM
1/4"=1'-0"	AE401B	1/4"=1'-0"	AE401B	1/4"=1'-0"	AE402

TAO	DESCRIPTION
TA-1	DOUBLE ROLL TOILET PAPER HOLDER
TA-2	18" TOWEL BAR MOUNT 18" ABOVE VANITY COUNTERTOP
TA-3	36" GRAB BAR
TA-4	42" GRAB BAR
TA-5	48" GRAB BAR
TA-6	24" GRAB BAR VERTICALLY INSTALLED 3'-6" A.F.F. AND LOCATED HORIZONTALLY 1'-0" FROM CENTERLINE OF TUB
TA-7	SHOWER ROD MOUNT 8'-6" A.F.F.
TA-8	ROBE HOOK MOUNT STANDARD ROOM ROBE HOOKS AT 5'-9" A.F.F. AND ADA ROOM ROBE HOOKS AT 4'-0" A.F.F.
TA-9	FOLDING SHOWER SEAT 1'-6" TO TOP OF SEAT
TA-10	PAPER TOWEL WASTE RECEPTACLE
TA-11	TOILET PAPER HOLDER W/ SHELF 18" A.F.F. TO CENTERLINE
TA-12	SOAP DISPENSER, DECK MOUNT
TA-13	NAPKIN TAMPON VENDOR
TA-14	NAPKIN DISPOSAL
TA-15	PAPER TOWEL DISPENSER
TA-16	MOP HOLDER
TA-17	CERAMIC SOAP DISH (SEE SPEC SECTION 09310) MOUNT SOAP DISHES AT 2'-0" A.F.F. AND 4'-0" A.F.F.
TA-18	30" GRAB BAR
TA-19	SANITARY SEAT COVER DISPENSER
TA-20	SANITARY NAPKIN/TAMPON DISPENSER
TA-21	COAT HOOK
TA-22	WALL MOUNTED SOAP DISPENSER
TA-23	36" GRAB BAR (PUBLIC AREAS)
TA-24	42" GRAB BAR (PUBLIC AREAS)
TA-25	MIRROR: 24" X 36"

J15	TOILET ACCESSORIES
N.T.S.	-

0	CONSTRUCTION DOCUMENTS	5-29-02
REV.	DESCRIPTION	DATE

CONSTRUCTION DOCUMENTS
5-29-02

CURRENT ISSUE STATUS:

SM RT ARCHITECTURE ENGINEERING PLANNING

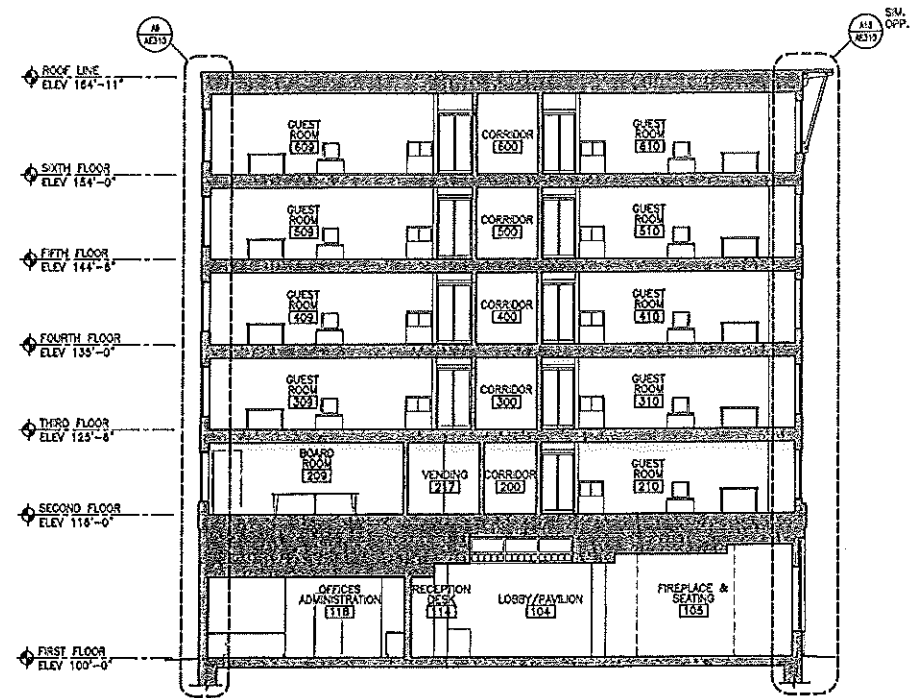
144 Fore Street, P.O. Box 818
Portland, Maine 04104
Tel. (207) 772-3848
Fax. (207) 772-1070

HILTON GARDEN INN
65 COMMERCIAL STREET
PORTLAND, MAINE

PUBLIC BATHROOM INTERIOR
Elevs. & TYP. MOUNTING HEIGHTS

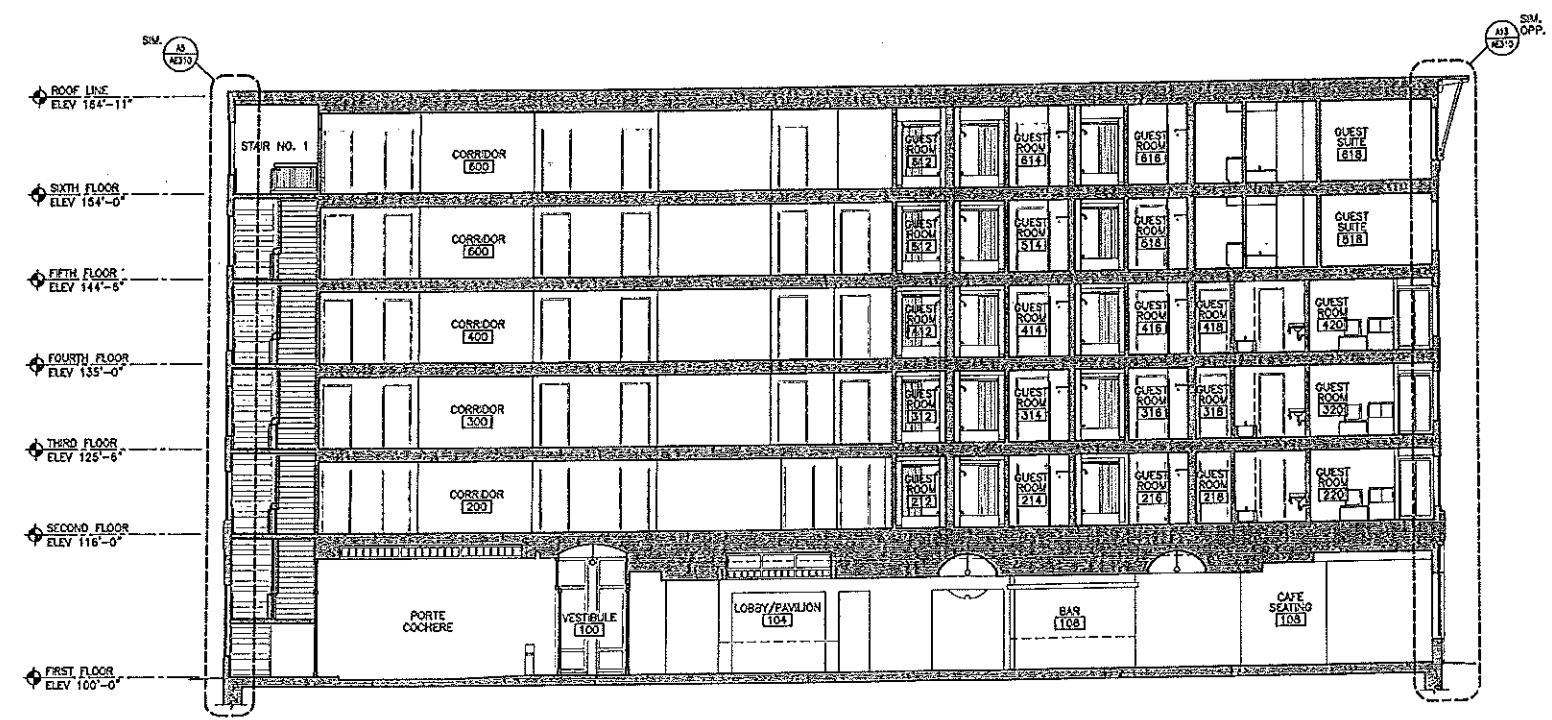
PROJECT:	DATE:	5-29-02
SCALE:	AS NOTED	
PROJECT MANAGER:	JLJ	GRAPHIC SCALE:
JOB CAP/DRWNS:	MWG	
A/E OF RECORD:	JLJ	SHEET No.
SMRT CAD FILE:	AE231-02004	AE231
PROJECT No.	02004	

A1	NOT USED
----	----------

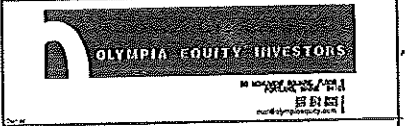


J1 BUILDING SECTION
1/8" = 1'-0" AE101, AE102, AE103, AE104, AE105, AE108

J9 -
-

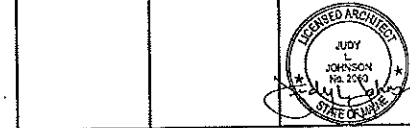


A1 BUILDING SECTION
1/8" = 1'-0" AE101, AE102, AE103, AE104, AE105, AE106



REV.	DESCRIPTION	DATE
0	CONSTRUCTION DOCUMENTS	5-29-02

CONSTRUCTION DOCUMENTS
5-29-02



SM RT ARCHITECTURE ENGINEERING PLANNING
144 Fore Street 7th Fl. Box 618
Portland, Maine 04104
Tel. (207) 772-3845
Fax. (207) 772-1070

HILTON GARDEN INN
65 COMMERCIAL STREET
PORTLAND, MAINE

BUILDING SECTIONS

SHEET TITLE:	AS NOTED	DATE:	5-29-02
SCALE:		GRAPHIC SCALE:	0" = 1'-0"
PROJECT MANAGER:	JLJ		
JOB CAP/DRAWN:	MNO		
A/E OF RECORD:	JLJ	SHEET No.	AE301
SMRT CAD FILE:	AE301-02004		
PROJECT No.	02004		