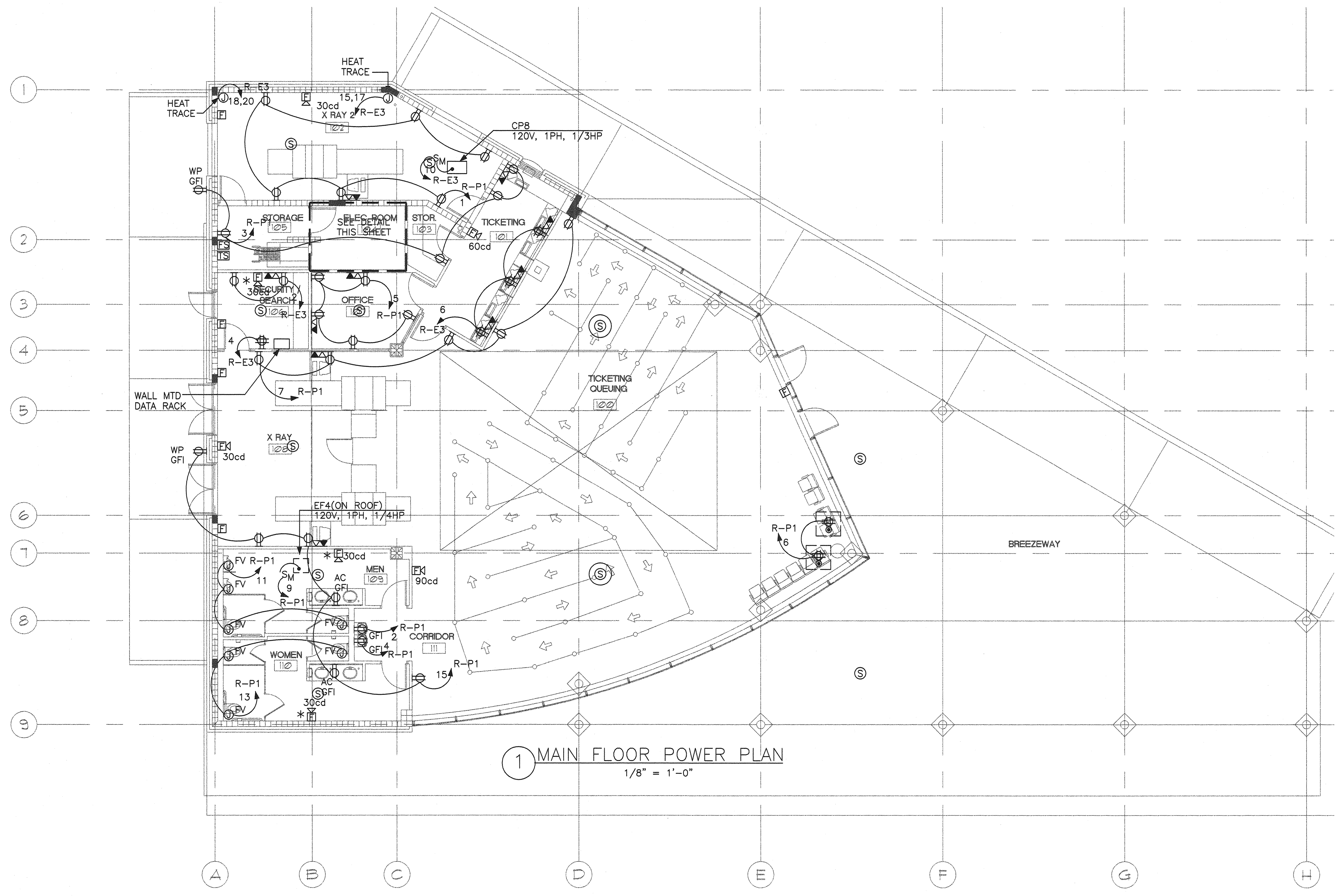
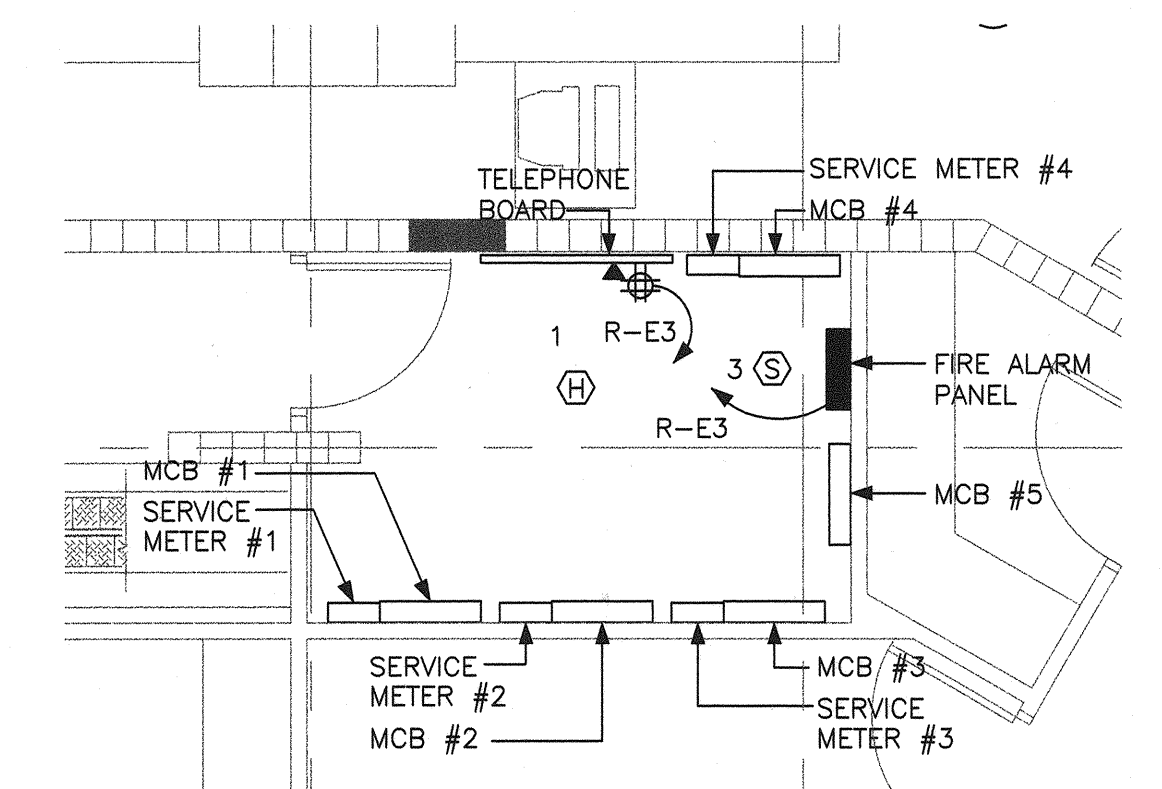


Filename:

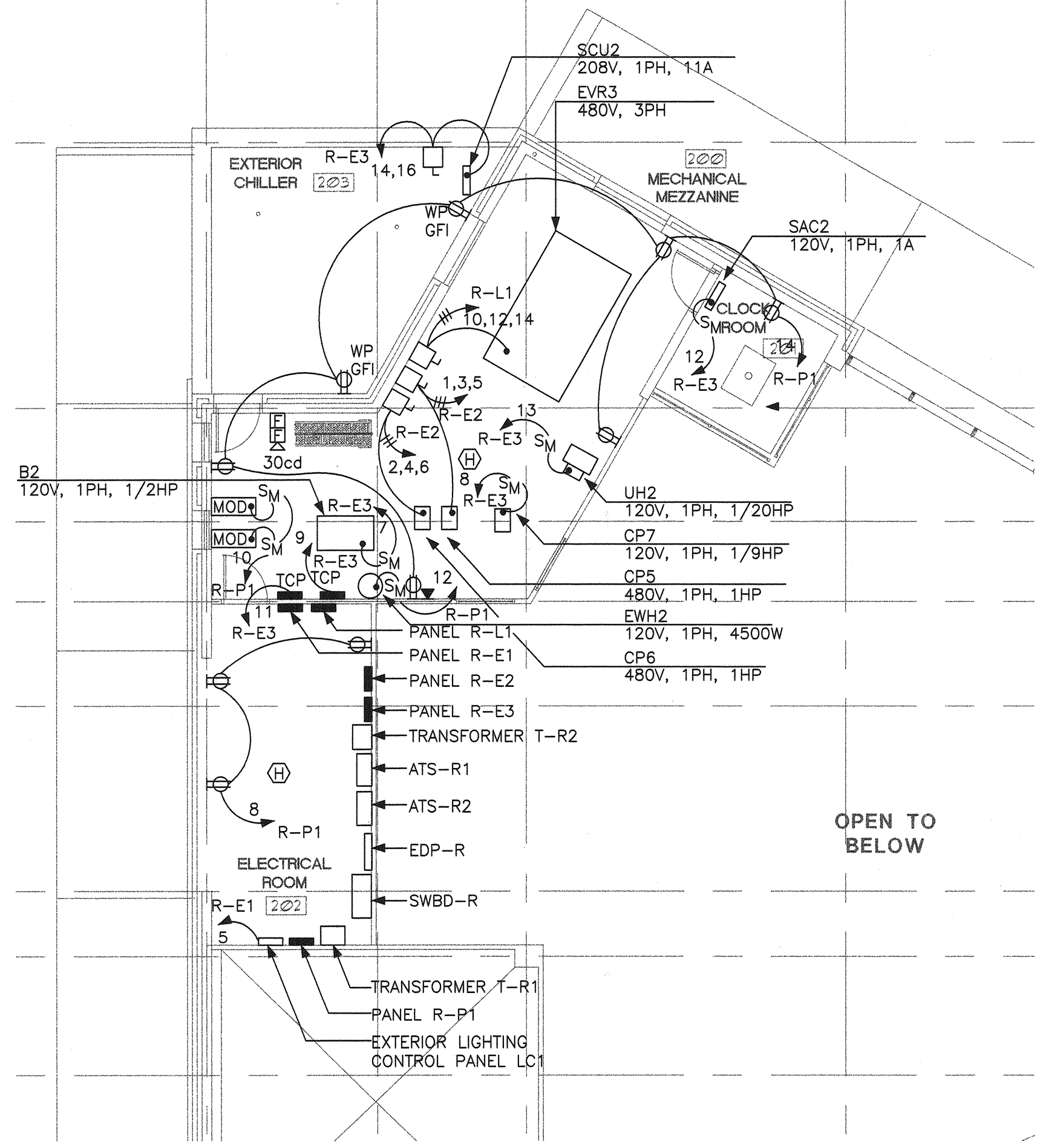


1 MAIN FLOOR POWER PLAN  
1/8" = 1'-0"

NOTES:  
1. VERIFY EXACT LOCATION OF ALL MECHANICAL EQUIPMENT PRIOR TO ROUGH-IN.



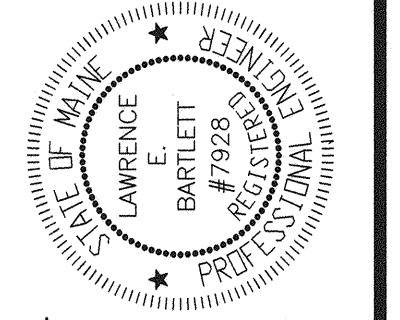
2 ELECTRICAL 104  
1/4" = 1'-0"



3 MEZZANINE POWER PLAN  
1/8" = 1'-0"

**Bartlett Design**  
LIGHTING & ELECTRICAL ENGINEERING  
1000 STATE STREET, PORTLAND, ME 04101  
TEL: (207) 443-8447 FAX: (207) 443-5580

STATE OF MAINE  
DEPARTMENT OF TRANSPORTATION  
PROJECT NUMBER 009215.00  
PIN  
009215.00



Lawrence E. Bartlett  
SIGNATURE  
7926  
P.E. NUMBER  
10/27/04  
DATE

PROJ. MANAGER	PAUL POTLIE	DATE	BY	DATE
DESIGN-DETAILED	J.C. LEB	10/27/04	J.C. LEB	
CHECKED-REVIEWED	J.C. LEB		J.C. LEB	
DESIGN-DETAILED2				
DESIGN-DETAILED3				
REVISIONS 1				
REVISIONS 2				
REVISIONS 3				
REVISIONS 4				
FIELD CHANGES				

CITY OF PORTLAND  
OCEAN GATEWAY PHASE 1  
RECEIVING BUILDING  
POWER PLAN

E100-R