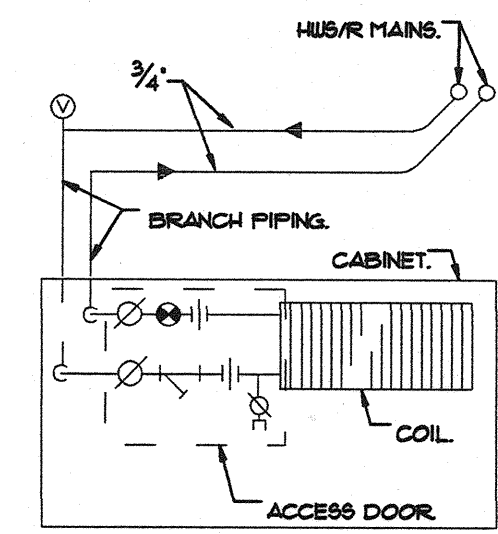
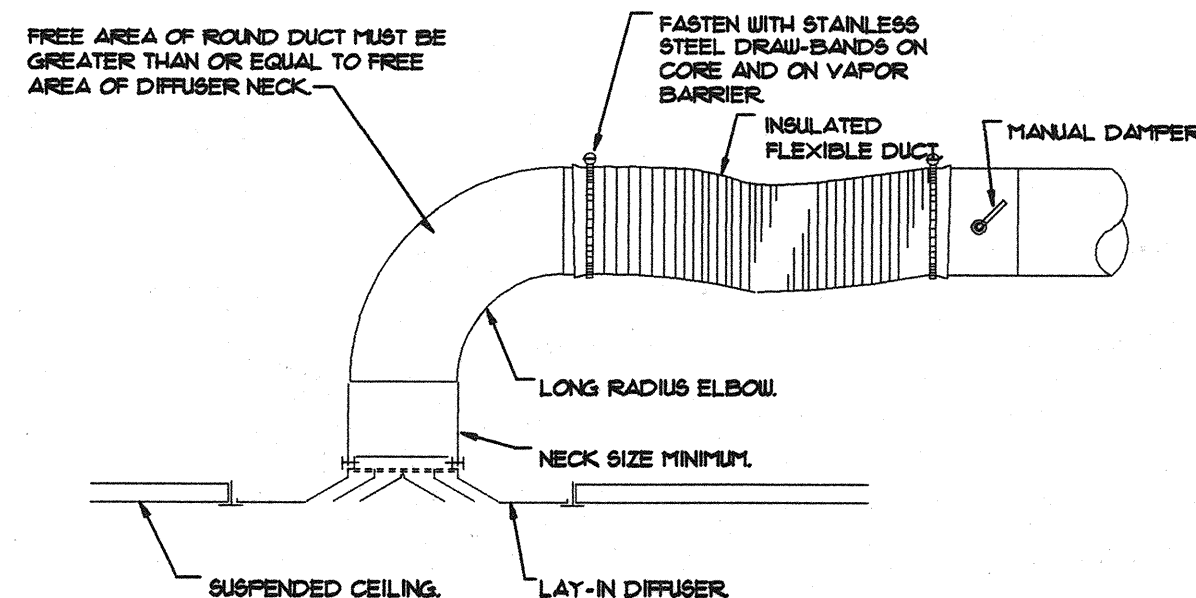


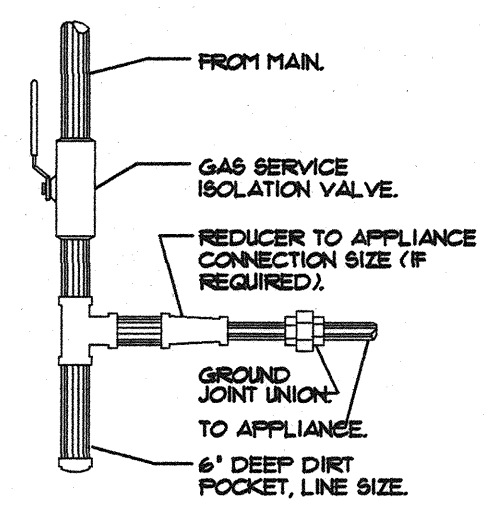
**HORIZONTAL UNIT HEATER PIPING DETAIL**  
NTS



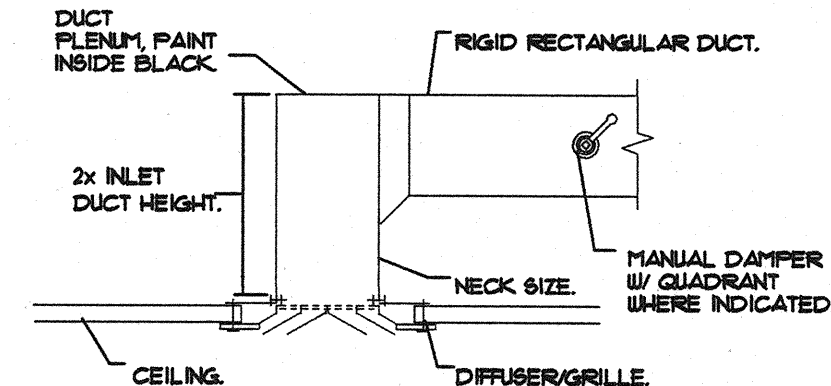
**CABINET UNIT HEATER PIPING DETAIL**  
NTS



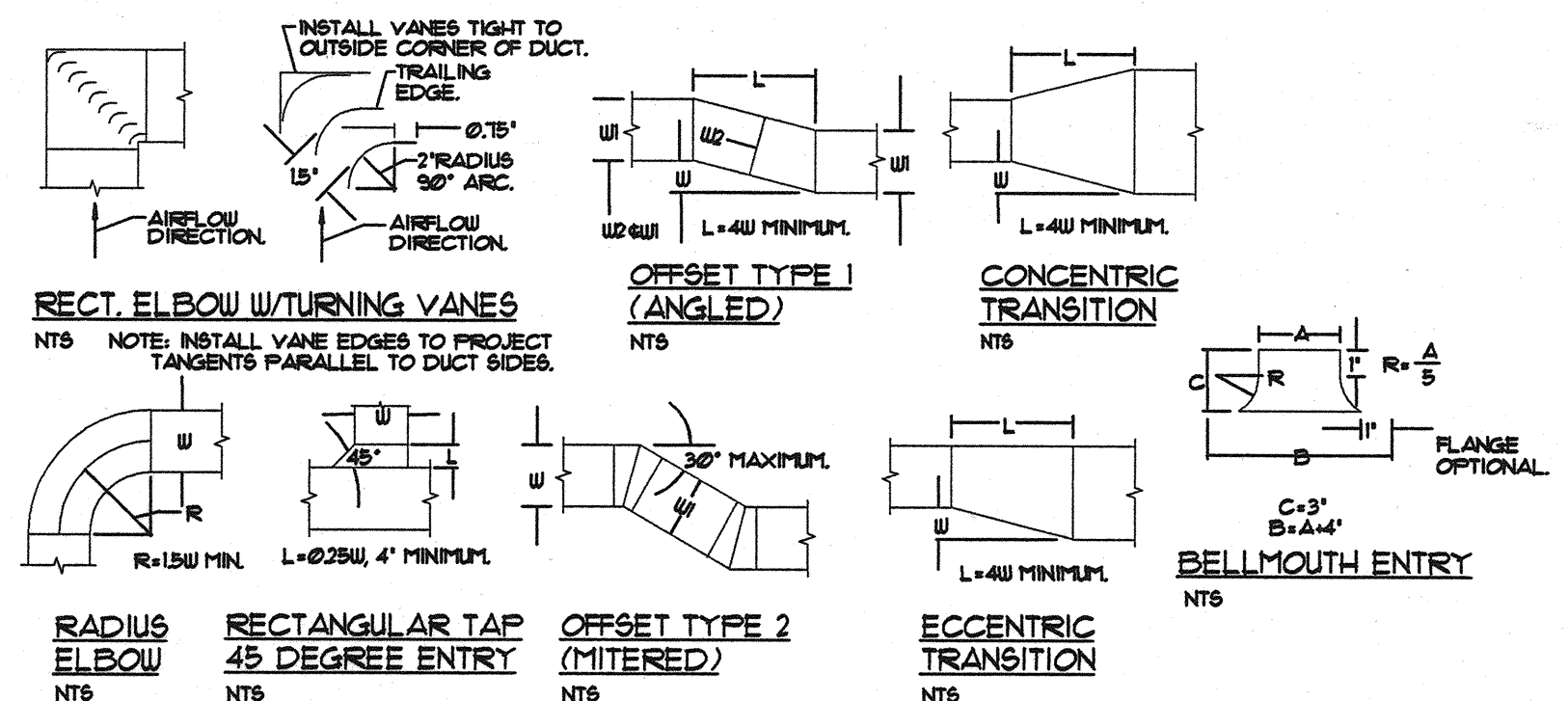
**DIFFUSER/RETURN CONNECTION DETAIL**  
NTS  
NOTE: DETAIL TYPICAL FOR CEILING GRILLES, REGISTERS AND LINEAR DIFFUSERS. FOR SURFACE-MOUNT DEVICES, SUPPORT PLENUM FROM CEILING GRID WITH STEEL ANGLES FASTENED TO PLENUM. FOR RETURN GRILLES, PROVIDE FLEXIBLE DUCT TO THE PLENUM WHERE INDICATED, 2 FEET LONG MINIMUM, 4 FEET MAXIMUM.



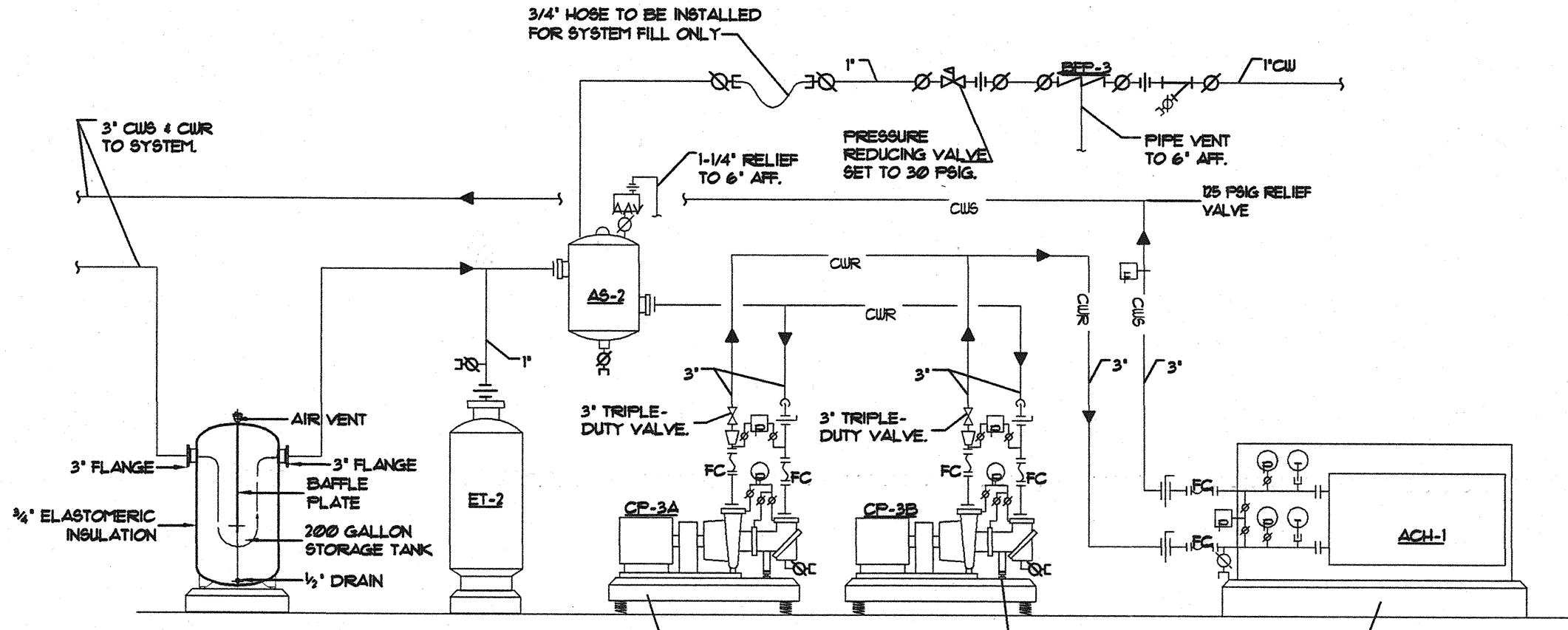
**DOWNFEED GAS PIPING CONNECTION DETAIL**  
NTS  
NOTE: APPLIANCES WITH REGULATORS. LOCATE PIPING SHOWN HEREIN UPSTREAM OF THE APPLIANCE REGULATOR. PROVIDE A TEST PLUG DOWNSTREAM OF THE APPLIANCE REGULATOR.



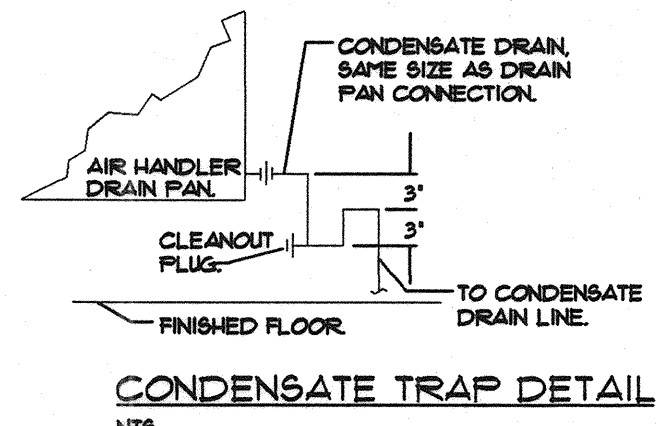
**DIFFUSER CONNECTION DETAIL**  
NTS



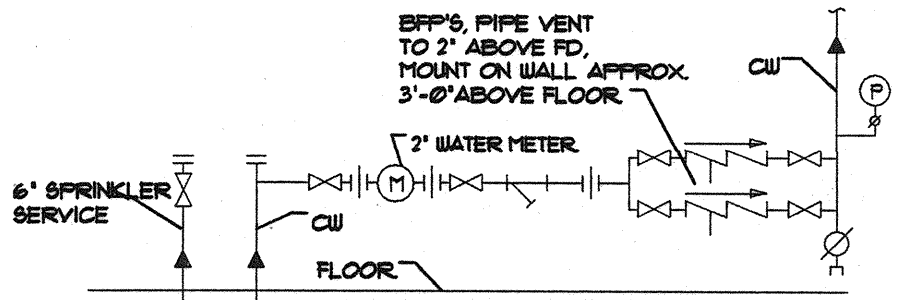
**LOW PRESSURE DUCT CONSTRUCTION DETAILS - TYPICAL**  
NTS



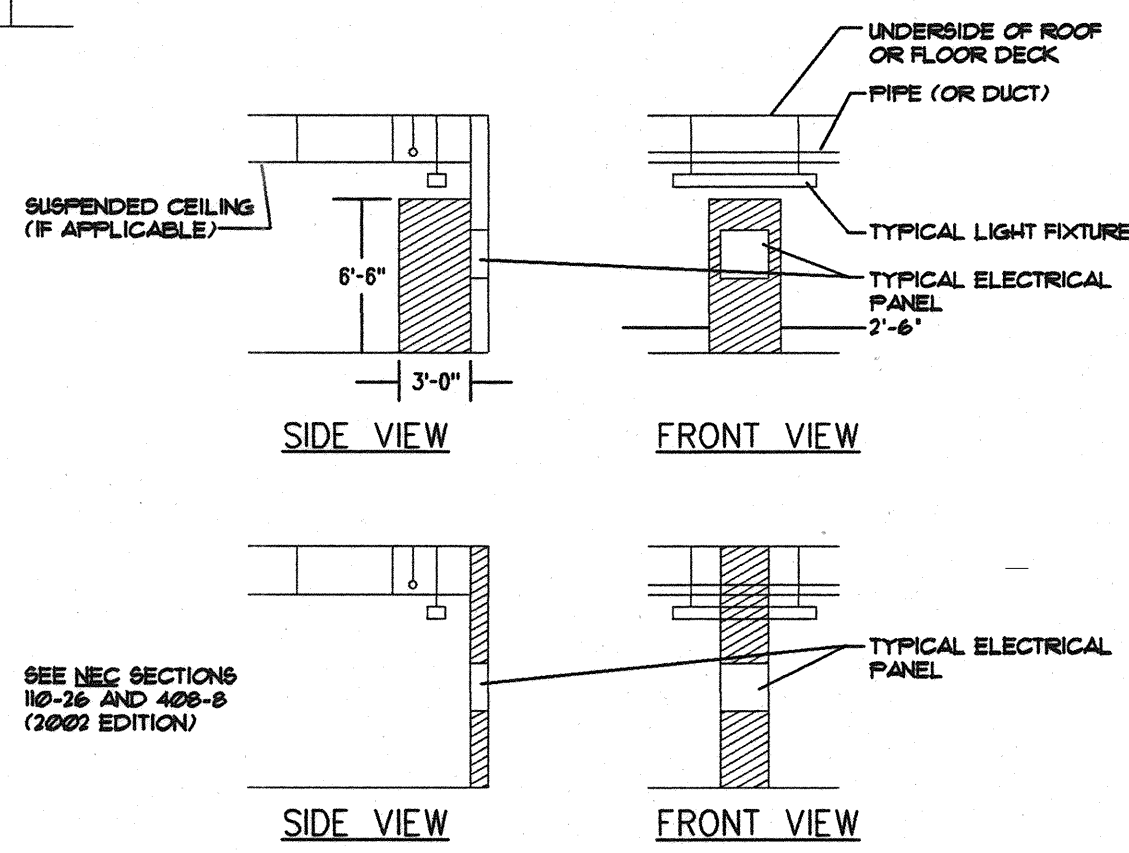
**CHILLED WATER SYSTEM PIPING SCHEMATIC**  
NTS



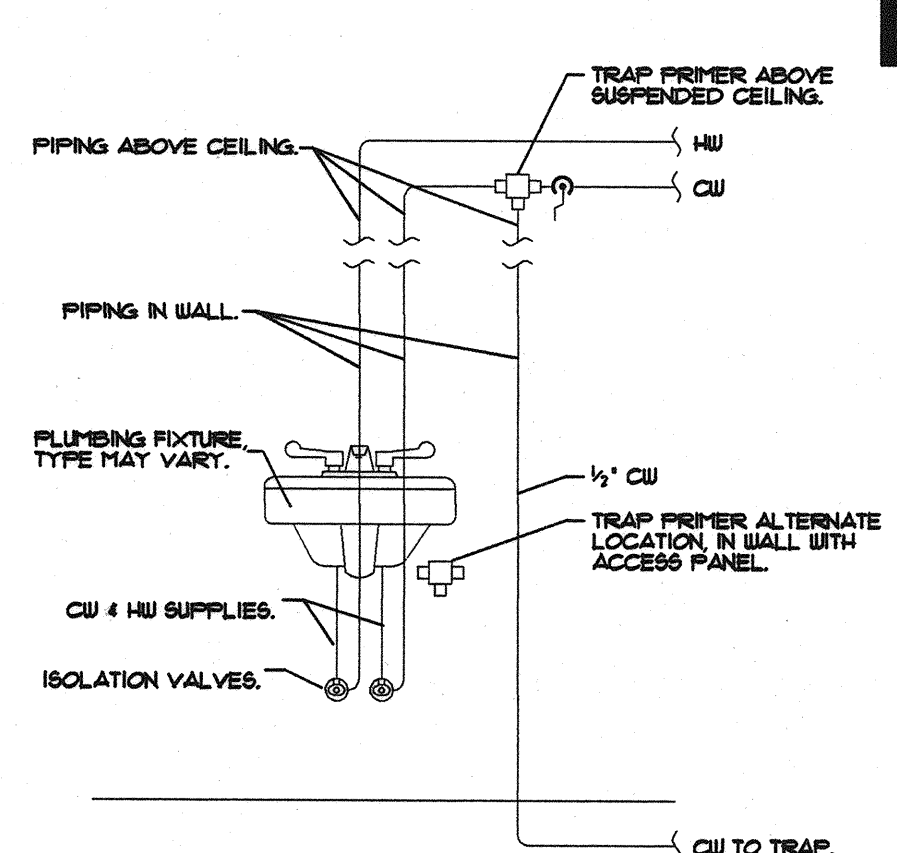
**CONDENSATE TRAP DETAIL**  
NTS  
NOTE: CAP UNUSED DRAIN PAN CONNECTIONS.



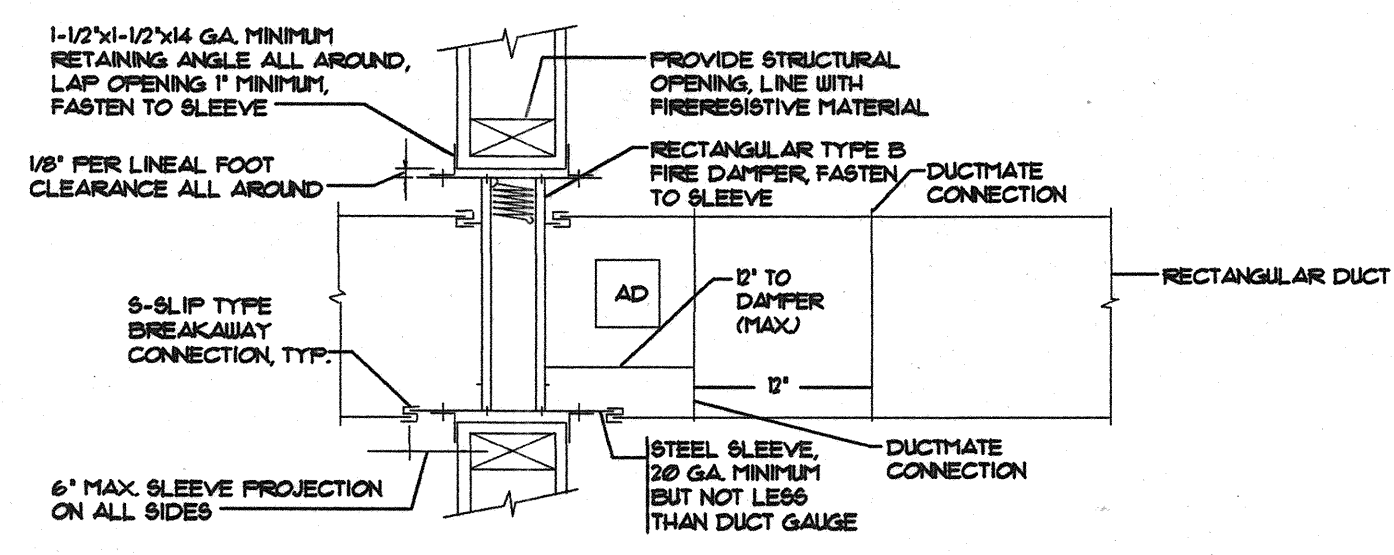
**WATER ENTRANCE DETAIL**  
NTS  
TYPICAL AT EACH BUILDING



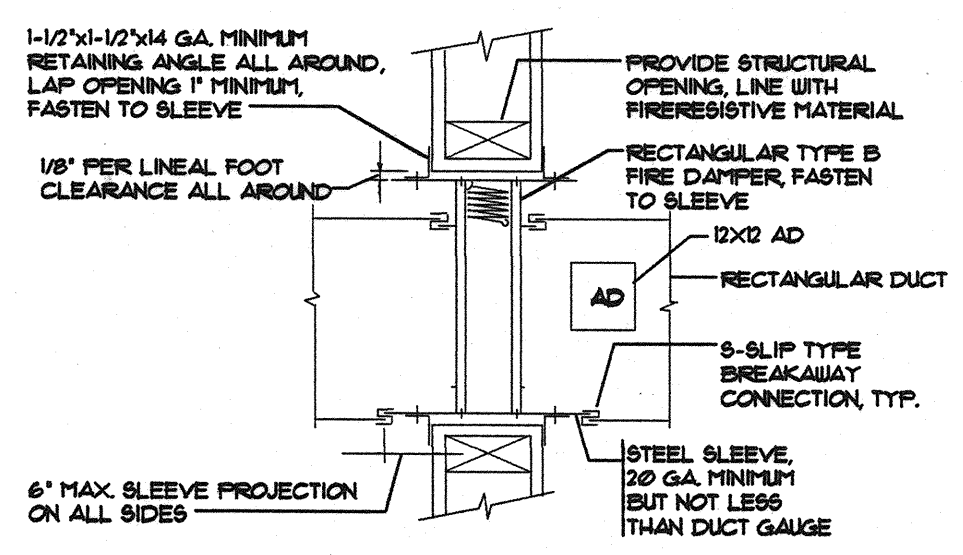
**CLEARANCES AT ELECTRICAL PANELS**  
NTS  
NOTE: NO DUCTWORK OR PIPING IS PERMITTED IN THE HATCHED AREAS.



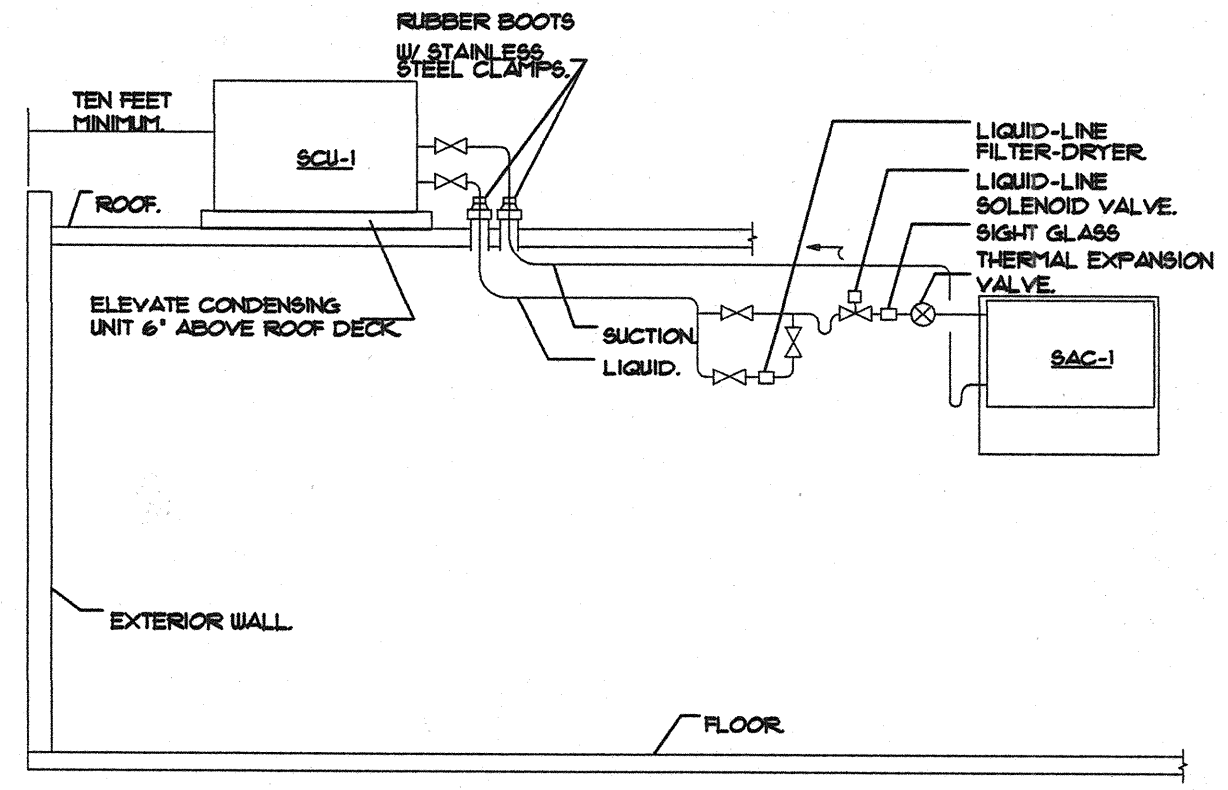
**TRAP PRIMER CONNECTION DETAIL**  
NTS  
NOTE: FIXTURES WITH (T) DESIGNATION SHALL HAVE TRAP PRIMERS.



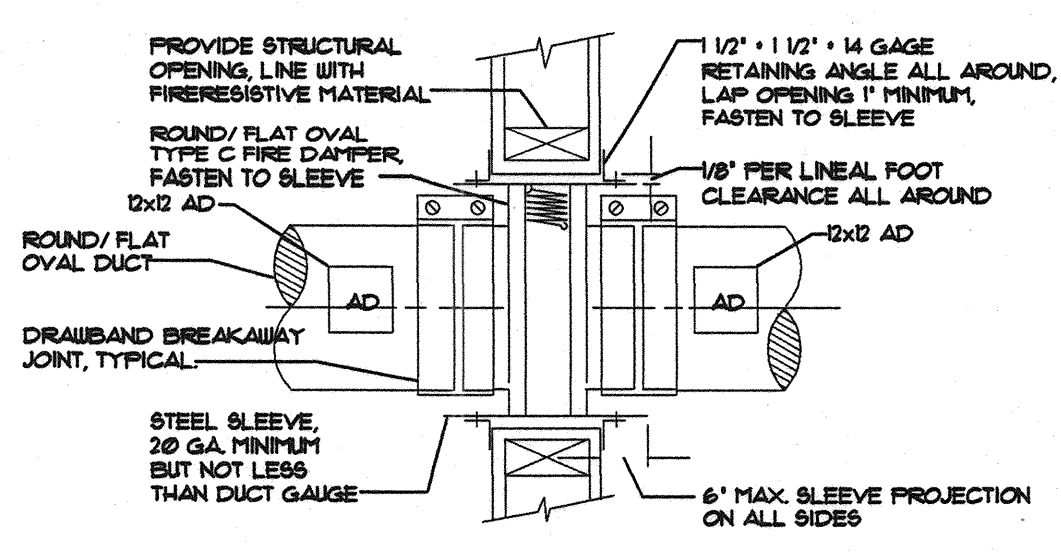
**RECTANGULAR FIRE DAMPER INSTALLATION DETAIL WHERE 12X12 ACCESS DOOR IS NOT POSSIBLE**  
NTS



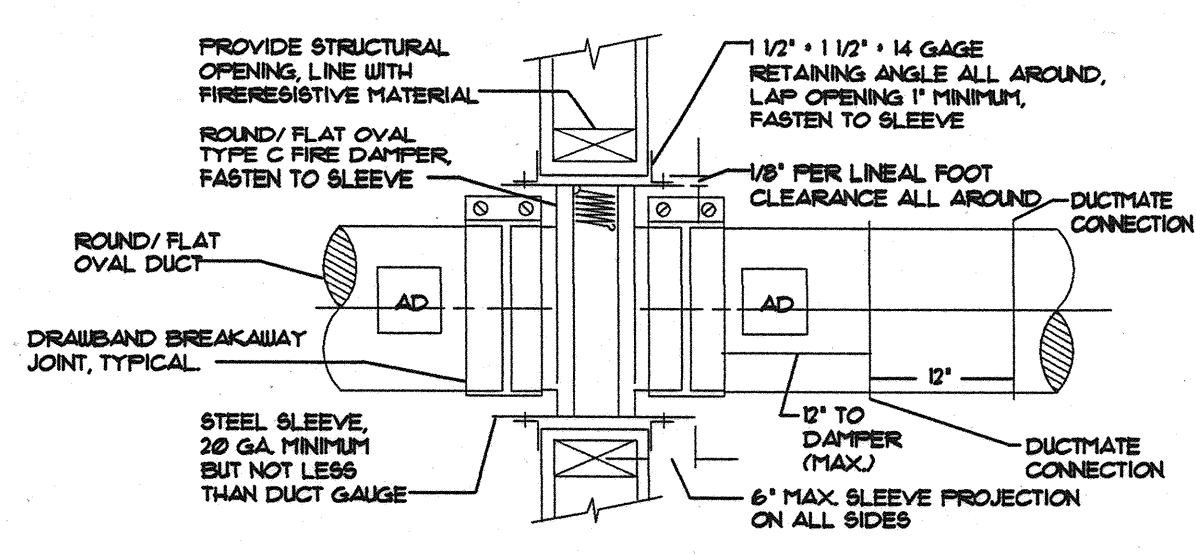
**RECTANGULAR FIRE DAMPER INSTALLATION DETAIL**  
NTS



**REFRIGERANT PIPING DETAIL**  
NTS



**ROUND/FLAT OVAL FIRE DAMPER INSTALLATION DETAIL**  
NTS



**ROUND/FLAT OVAL FIRE DAMPER INSTALLATION DETAIL WHERE A 12X12 ACCESS DOOR IS NOT POSSIBLE**  
NTS

**BENNETT ENGINEERING CONSULTING ENGINEERS**  
7 Bennett Road  
P.O. Box 297  
Bangor, ME 04401  
Tel: (207) 865-9475  
Fax: (207) 865-1900  
office@bennettengineering.net

STATE OF MAINE  
DEPARTMENT OF TRANSPORTATION  
PROJECT NUMBER 009215.00  
PIN 009215.00

STATE OF MAINE  
DEPARTMENT OF TRANSPORTATION  
PROJECT NUMBER 009215.00  
PIN 009215.00  
STEPHEN P. DOEL  
NO. 3807  
P.E. NUMBER 1015104  
DATE

DATE	BY	SP	DOEL	SHR	SMR	PAUL	POTTLE
10/05/04	SP	DOEL	SHR	SMR	PAUL	POTTLE	
10/05/04	SP	DOEL	SHR	SMR	PAUL	POTTLE	

CITY OF PORTLAND  
OCEAN GATEWAY PHASE 1  
PLUMBING AND HVAC  
DETAILS

PH301