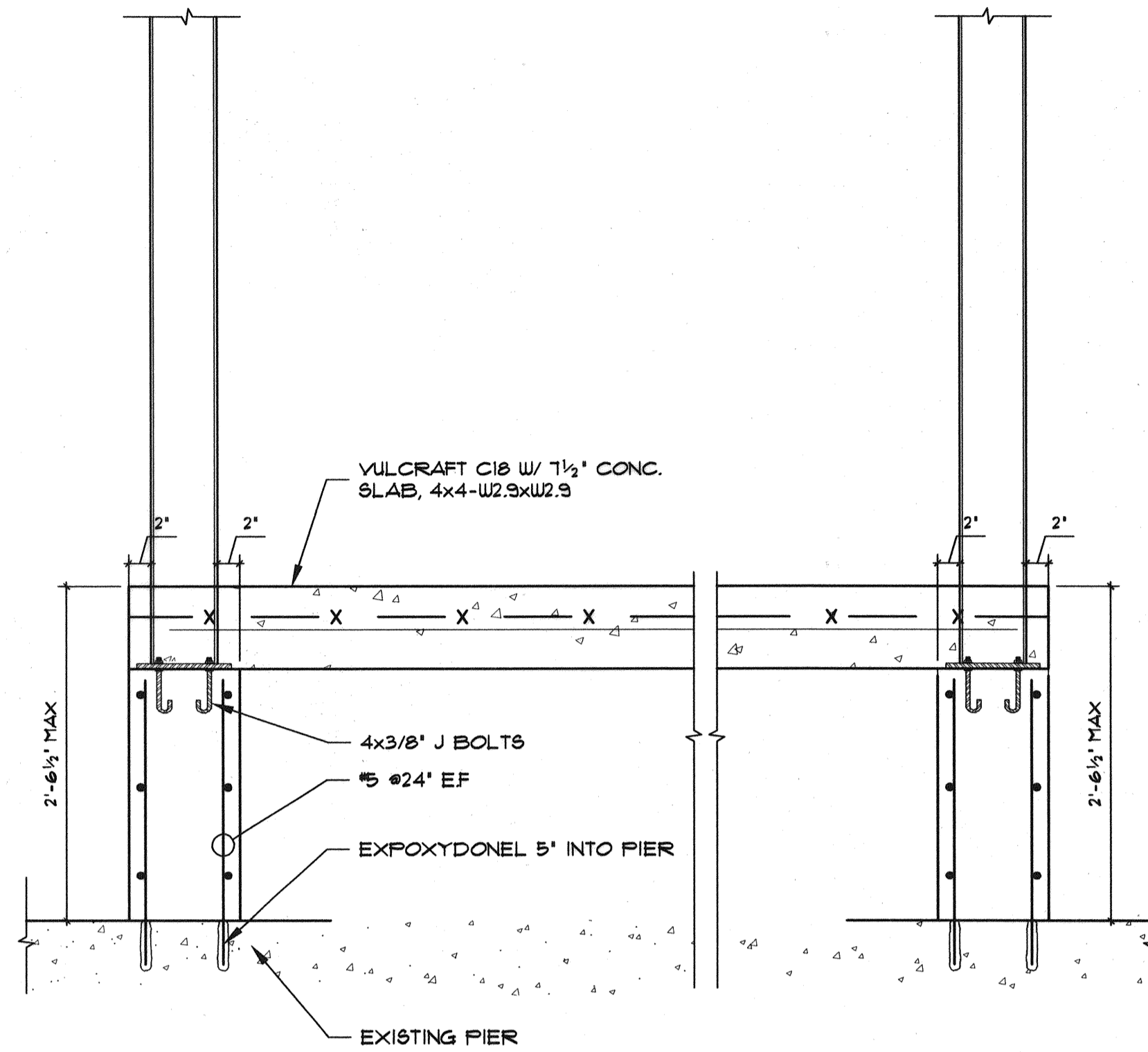
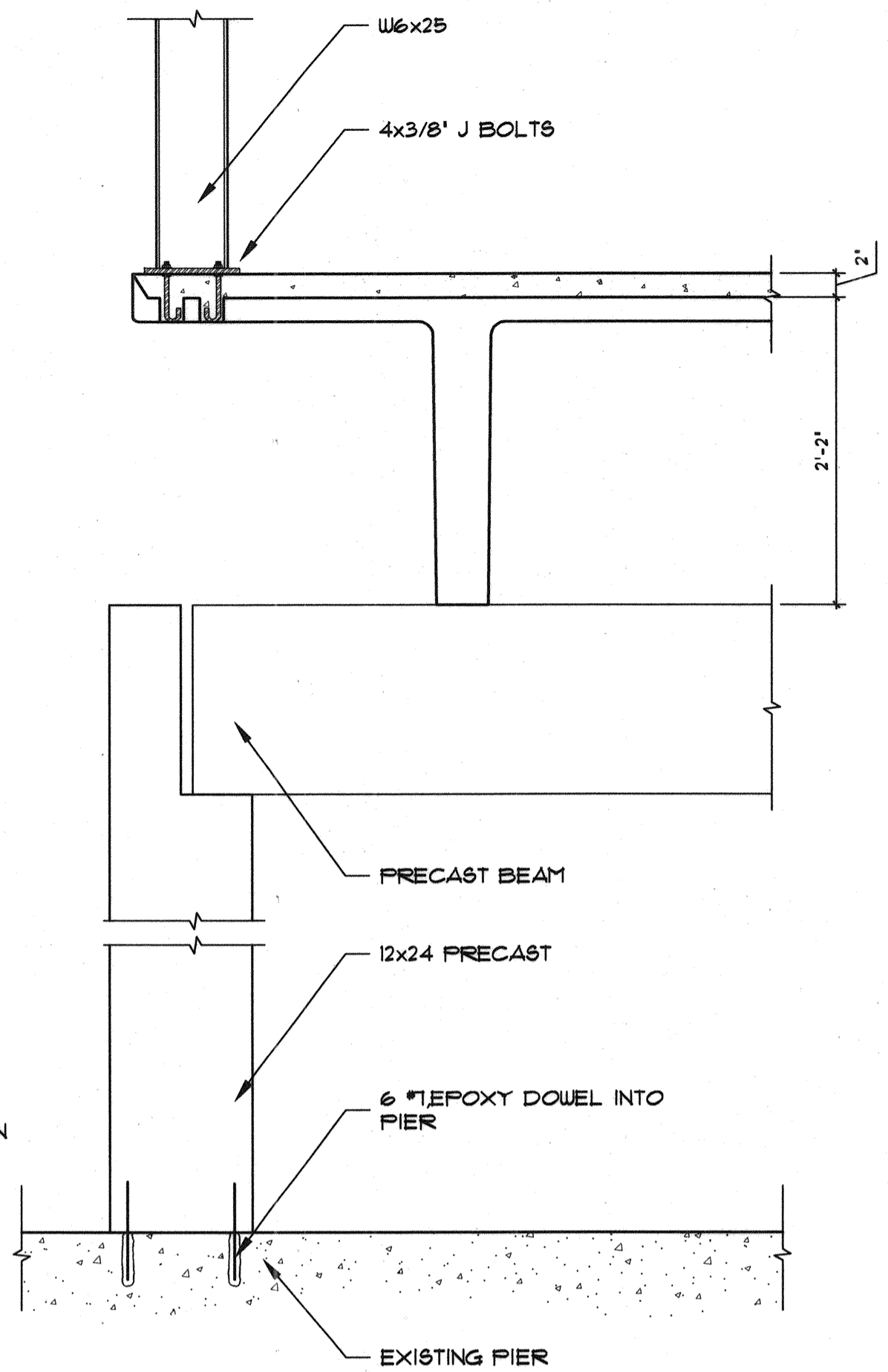


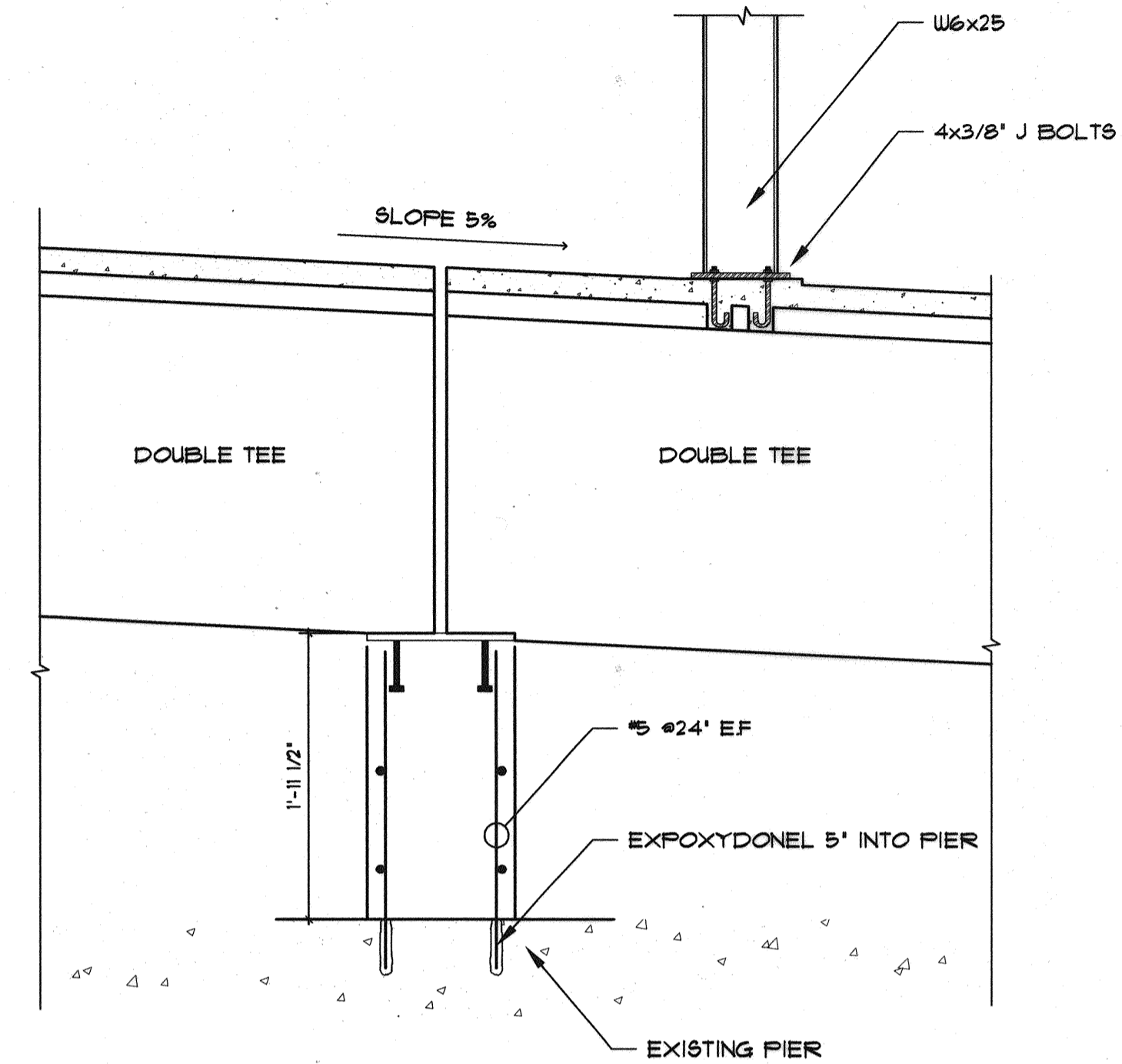
Filename: P:\02-0818 Maine Int Ferry Terminal\PHASE 1\Architecture\FINAL CONSTRUCTION DOCUMENTS\RAMPS\STRUCTURALS-200-W-DETAIL.dwg, Oct 08, 2004 - 4:54pm



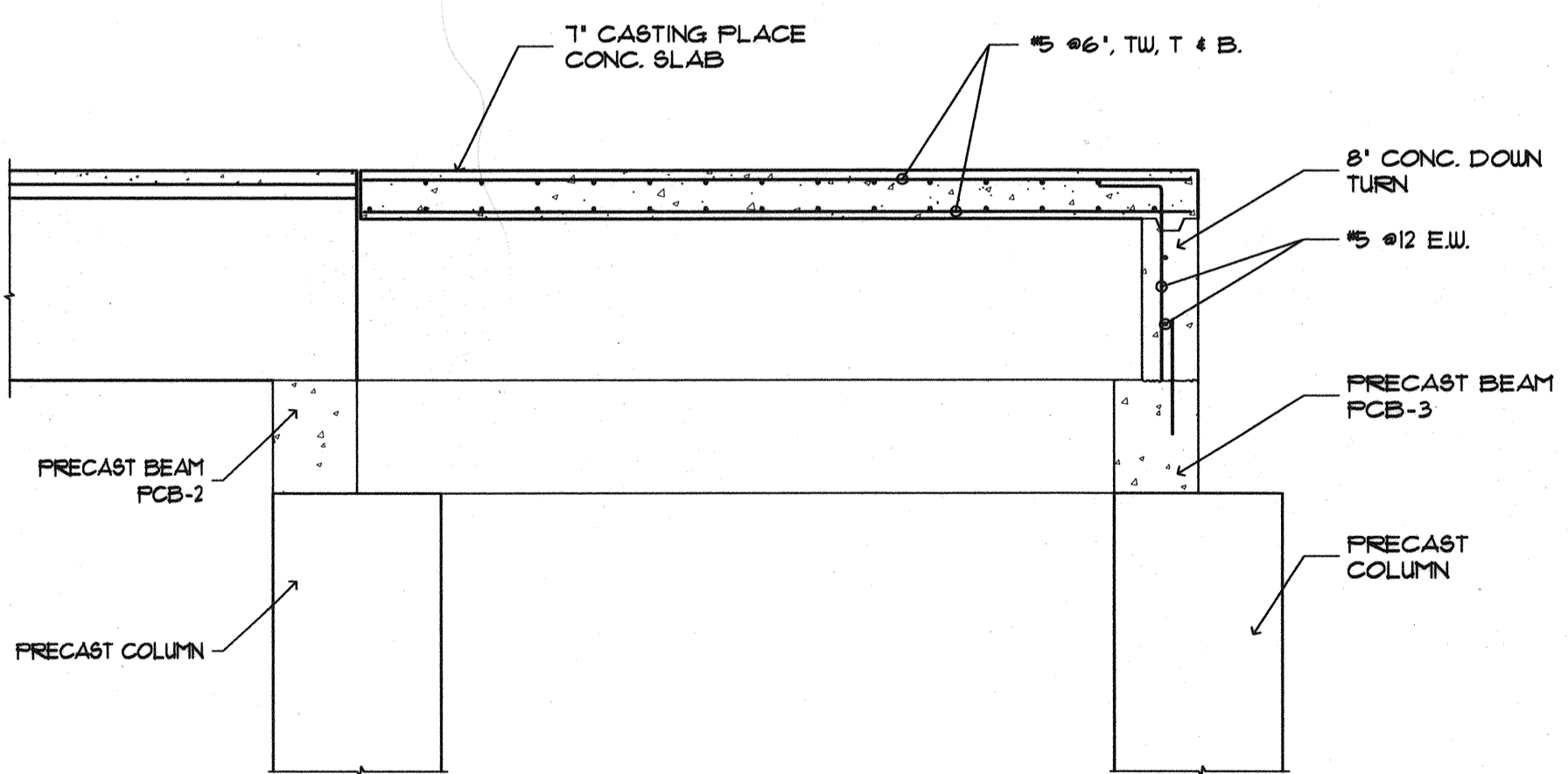
SECTION 1  
1'-1' S200



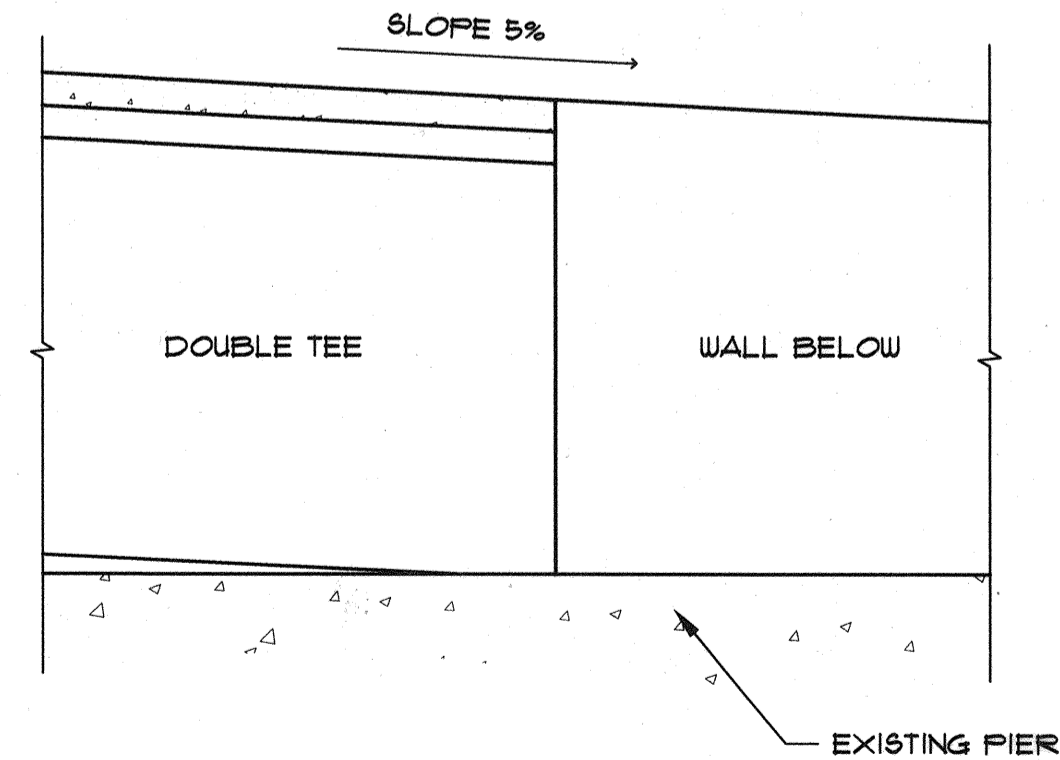
SECTION 2  
1'-1' S200



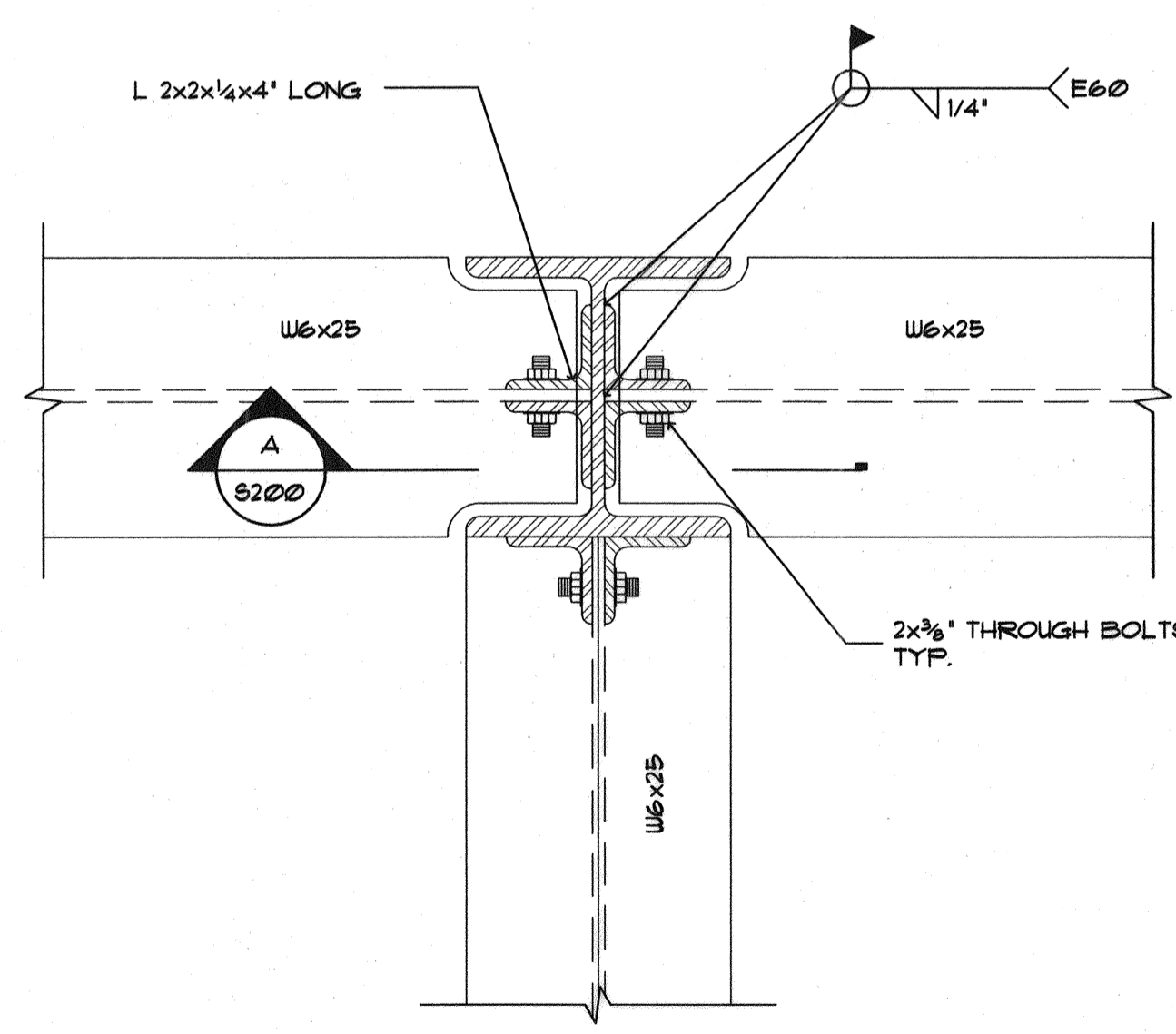
SECTION 3  
1'-1' S200



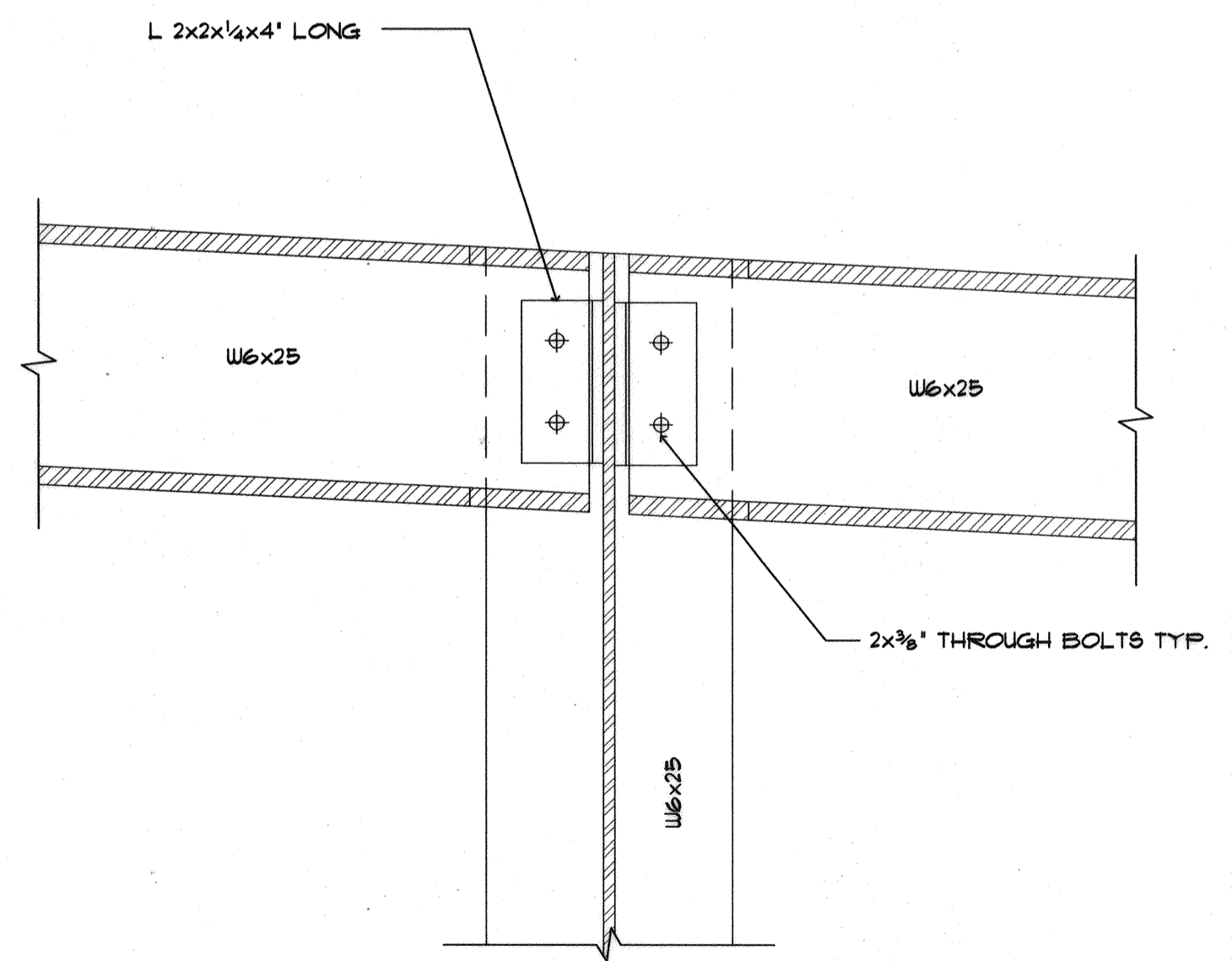
SECTION 5  
1/2'-1' S200



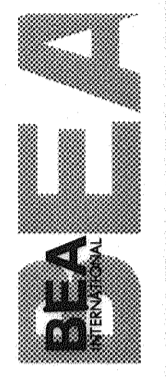
SECTION 4  
1'-1' S200



DETAIL 1  
3'-1' S200



SECTION A  
3'-1' S200



IN ASSOCIATION WITH  
PERKINS+WILL CONSULTING ENGINEERS  
PERKIN+WILL ARCHITECTS  
WINTON SCOTT ARCHITECTS  
HALEY & ALDRICH

STATE OF MAINE  
DEPARTMENT OF TRANSPORTATION  
PROJECT NUMBER 009215.00

SIGNATURE  
P. LICENCE NUMBER  
PE 10709  
DATE  
10/8/2004

PROJ. MANAGER	PAUL POTTE	BY	DATE
DESIGN-DETAILED			
CHECKED-REVIEWED			
DESIGN-DETAILED2			
DESIGN-DETAILED3			
REVISIONS 1			
REVISIONS 2			
REVISIONS 3			
REVISIONS 4			
FIELD CHANGES			

CITY OF PORTLAND  
OCEAN GATEWAY PHASE 1  
TERMINAL BUILDING  
STRUCTURAL DETAILS

S200-W