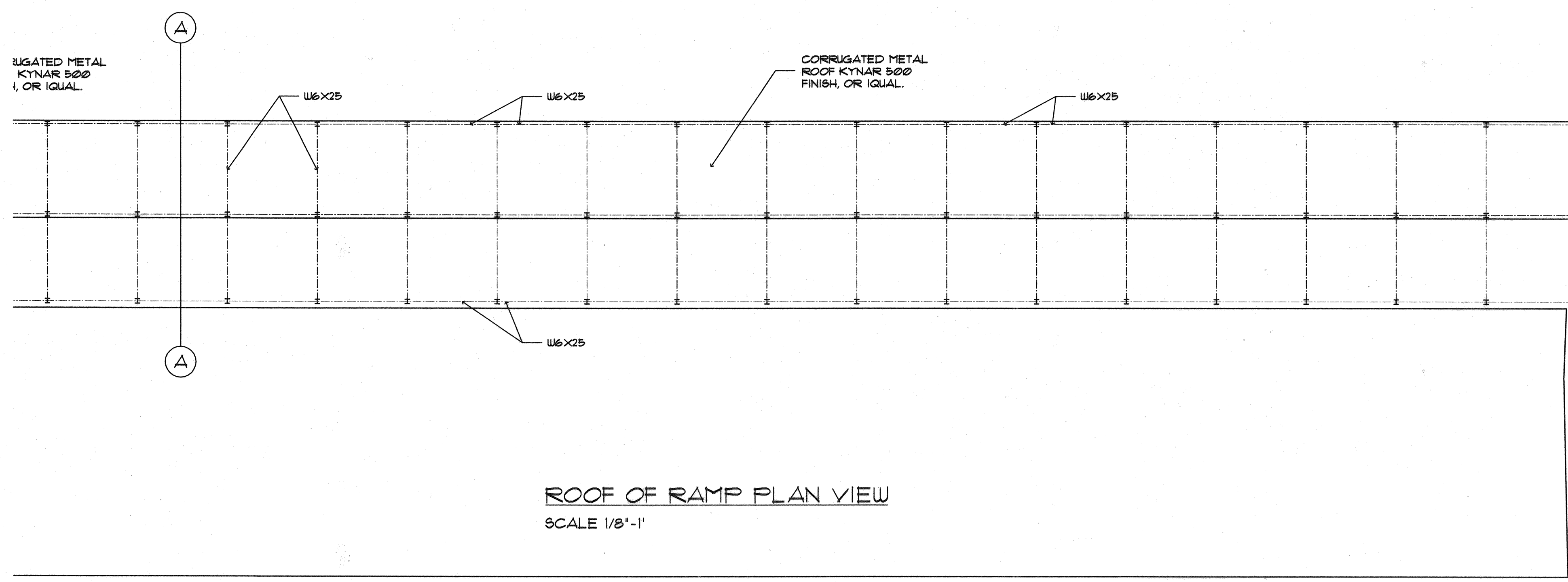
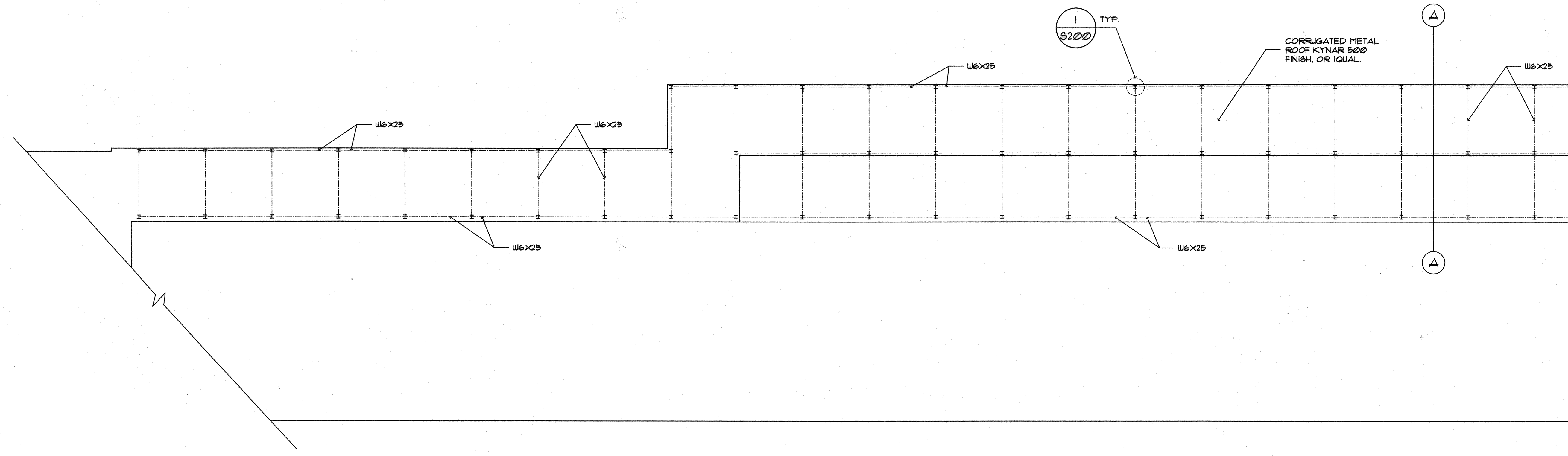
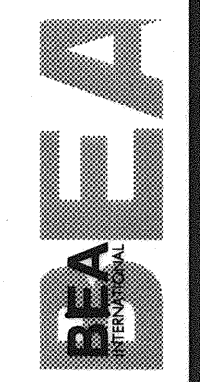


Filename: P:\02-0818 Maine Int. Ferry Terminal\PHASE 1\Architecture\FINAL CONSTRUCTION DOCUMENTS\RAMP\STRUCTURAL\101-W-ROOF.dwg, Oct.08, 2004 - 5:36pm



ROOF OF RAMP PLAN VIEW
SCALE 1/8"=1'



IN ASSOCIATION WITH:
GORRILL-PALMER CONSULTING ENGINEERS
PERATROVICH, NOTTINGHAM, & DRAGE
WINTON SCOTT ARCHITECTS
PALEY & ALDRICH

STATE OF MAINE
DEPARTMENT OF TRANSPORTATION
PROJECT NUMBER 009215.00

SIGNATURE
P. LICENCE NUMBER
PE. 10709
DATE
10/8/2004

PROJ. MANAGER	PAUL POTTE	BY	DATE
DESIGN-DETAILED			
CHECKED-REVIEWED			
DESIGN-2-DETAILED2			
DESIGN-3-DETAILED3			
REVISIONS 1			
REVISIONS 2			
REVISIONS 3			
REVISIONS 4			
FIELD CHANGES			

CITY OF PORTLAND
OCEAN GATEWAY PHASE 1
TERMINAL BUILDING
STRUCTURAL DETAILS

S101-W