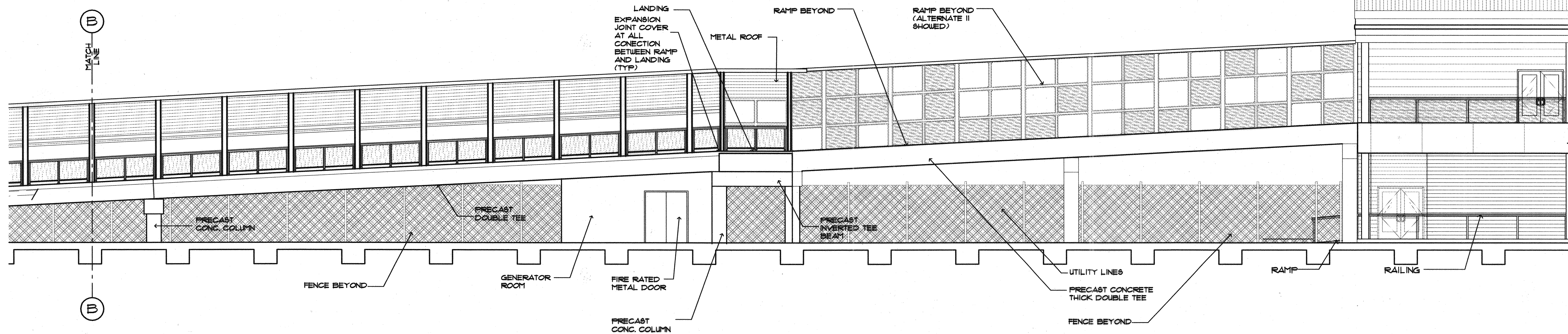
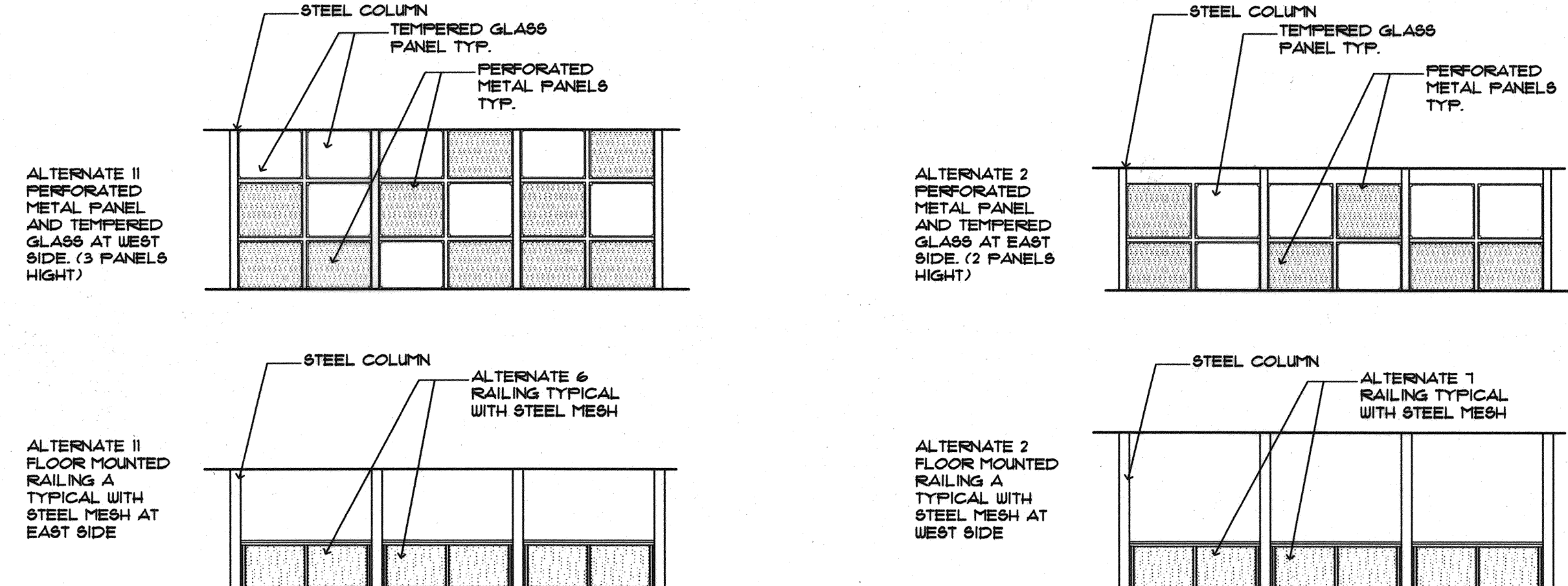


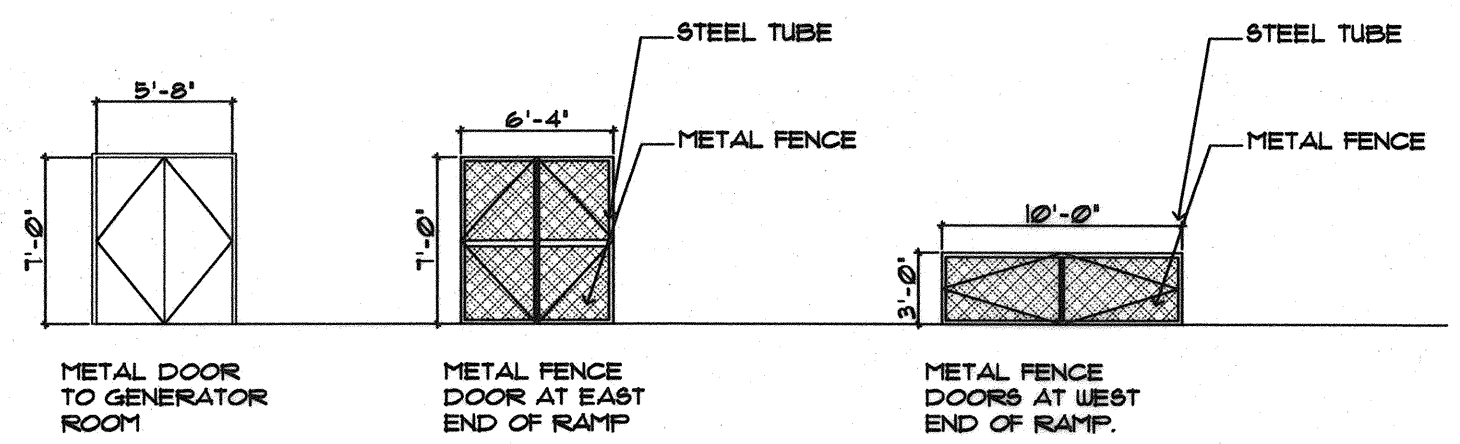
File name: I:\server1\projects\02-0818 Maine Int. Ferry Terminal\PHASE 1\Architecture\FINAL CONSTRUCTION DOCUMENTS\RAMP20343802-W-A301.dwg, Oct. 08, 2004 - 1:27pm



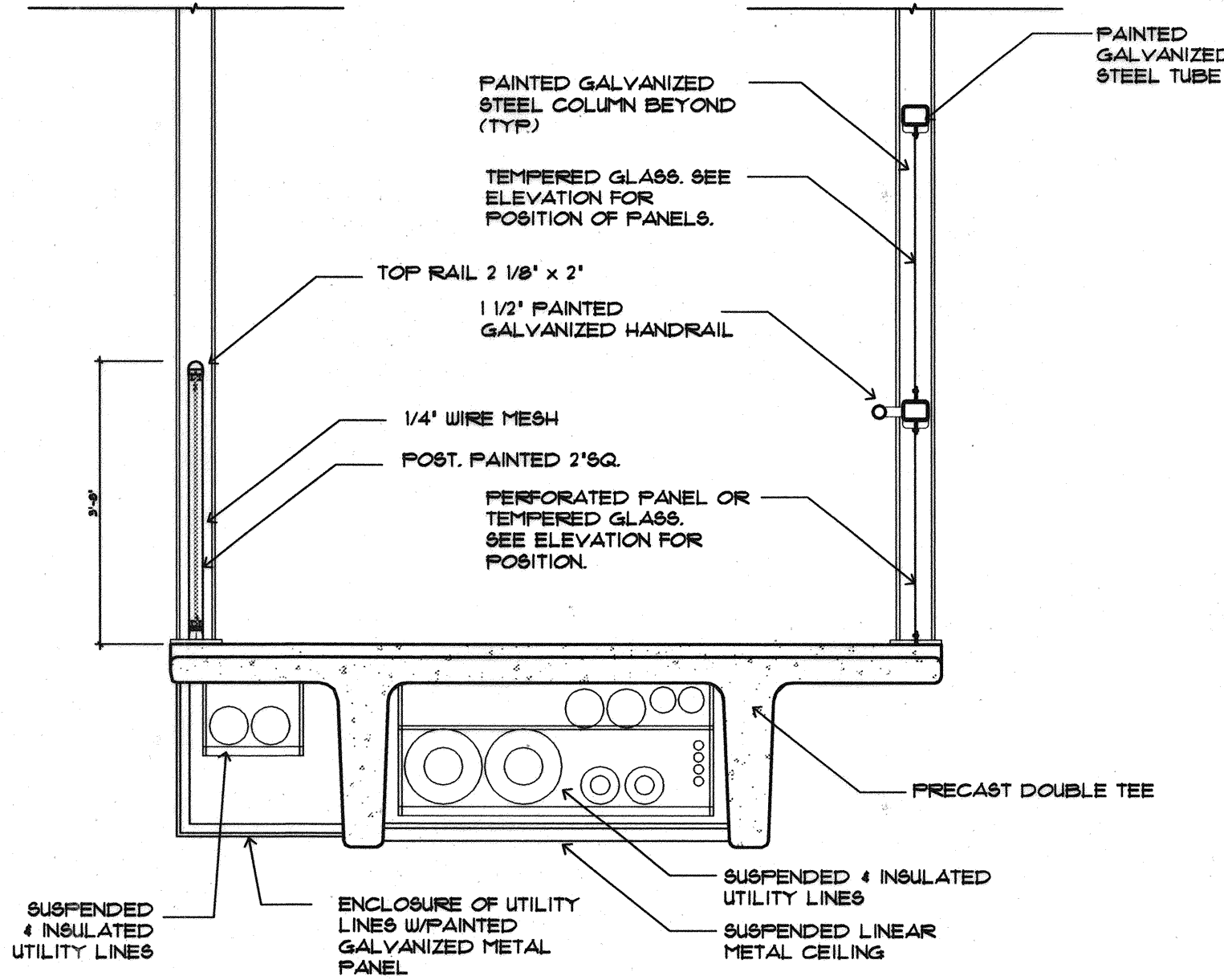
WEST PARTIAL ELEVATION
SCALE 1/8"=1'-0"



ENCLOSURE ALTERNATES AT RAMP
SCALE 1/8"=1'-0"



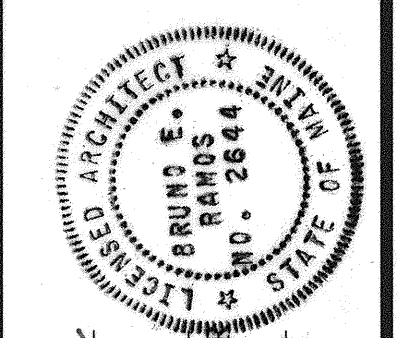
DOOR DETAILS AT RAMP
SCALE 1/8"=1'-0"



PARTIAL SECTION THROUGH RAMP
SCALE 1/2"=1'-0"

BEA
IN ASSOCIATION WITH:
CORRILL-PALMER CONSULTING ENGINEERS
PERATROWICH, NOTTINGHAM, & DRAGE
WINTON SCOTT ARCHITECTS
PALEY & ALDRICH

STATE OF MAINE
DEPARTMENT OF TRANSPORTATION
PROJECT NUMBER 009215.00
PIN 009215.00



PROJ. MANAGER	PAUL POTTE	DATE	
DESIGN-DETAILED		BY	
CHECKED-REVIEWED		DATE	
DESIGN-DETAILED		SIGNATURE	
REVISIONS 1		P. LICENCE NUMBER	ARC 2644
REVISIONS 2		DATE	10/8/2004
REVISIONS 3		DATE	
REVISIONS 4		DATE	
FIELD CHANGES		DATE	

CITY OF PORTLAND
OCEAN GATEWAY PHASE 1
ELEVATIONS

A301-W