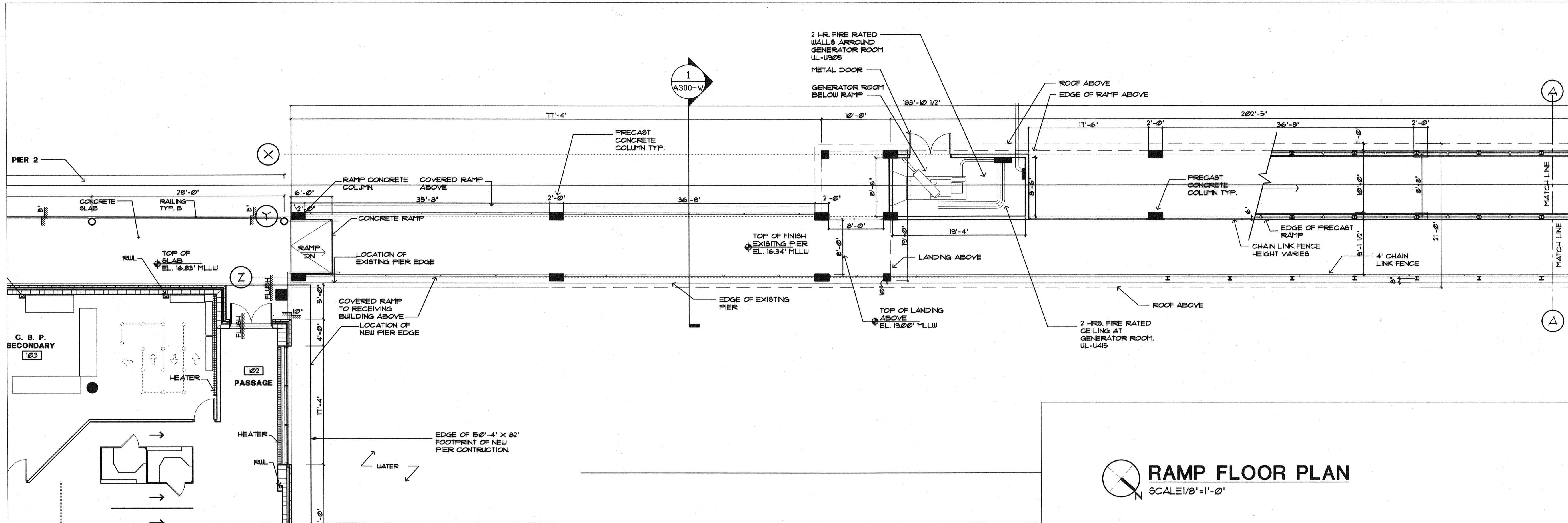
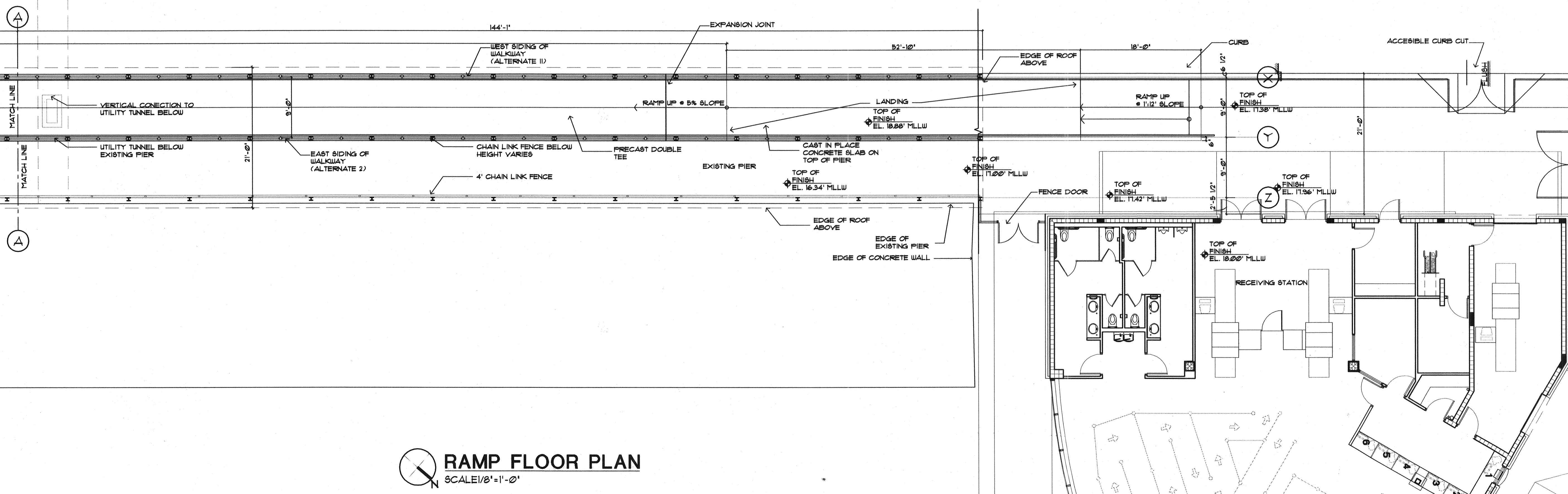


Filename: \\Server1\projects\02-0818 Maine Int Ferry Terminal\PHASE 1\Architecture\FINAL CONSTRUCTION DOCUMENTS\RAMP\20343802-W-A201.dwg, Oct 08, 2004 - 11:41am

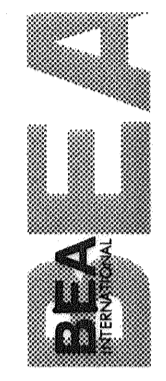


RAMP FLOOR PLAN
SCALE 1/8" = 1'-0"

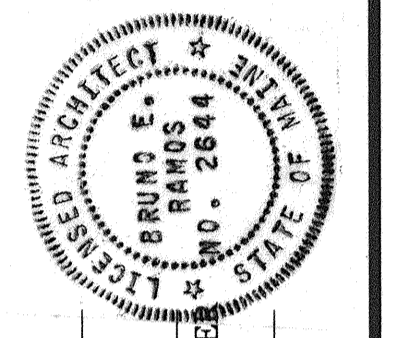


RAMP FLOOR PLAN
SCALE 1/8" = 1'-0"

IN ASSOCIATION WITH:
CORRILL-PALMER CONSULTING ENGINEERS
WINTON SCOTT ARCHITECTS
HALEY & ALDRICH



STATE OF MAINE
DEPARTMENT OF TRANSPORTATION
PROJECT NUMBER 009215.00
PIN
009215.00



PROJ. MANAGER	PAUL POTTLE	BY	DATE	SIGNATURE	DATE
DESIGN-DETAILED					
CHECKED-REVIEWED					
DESIGN-DETAILED2					
DESIGN-DETAILED3					
REVISIONS 1					
REVISIONS 2					
REVISIONS 3					
REVISIONS 4					
FIELD CHANGES					

CITY OF PORTLAND
OCEAN GATEWAY PHASE 1
FLOOR PLAN

A201-W