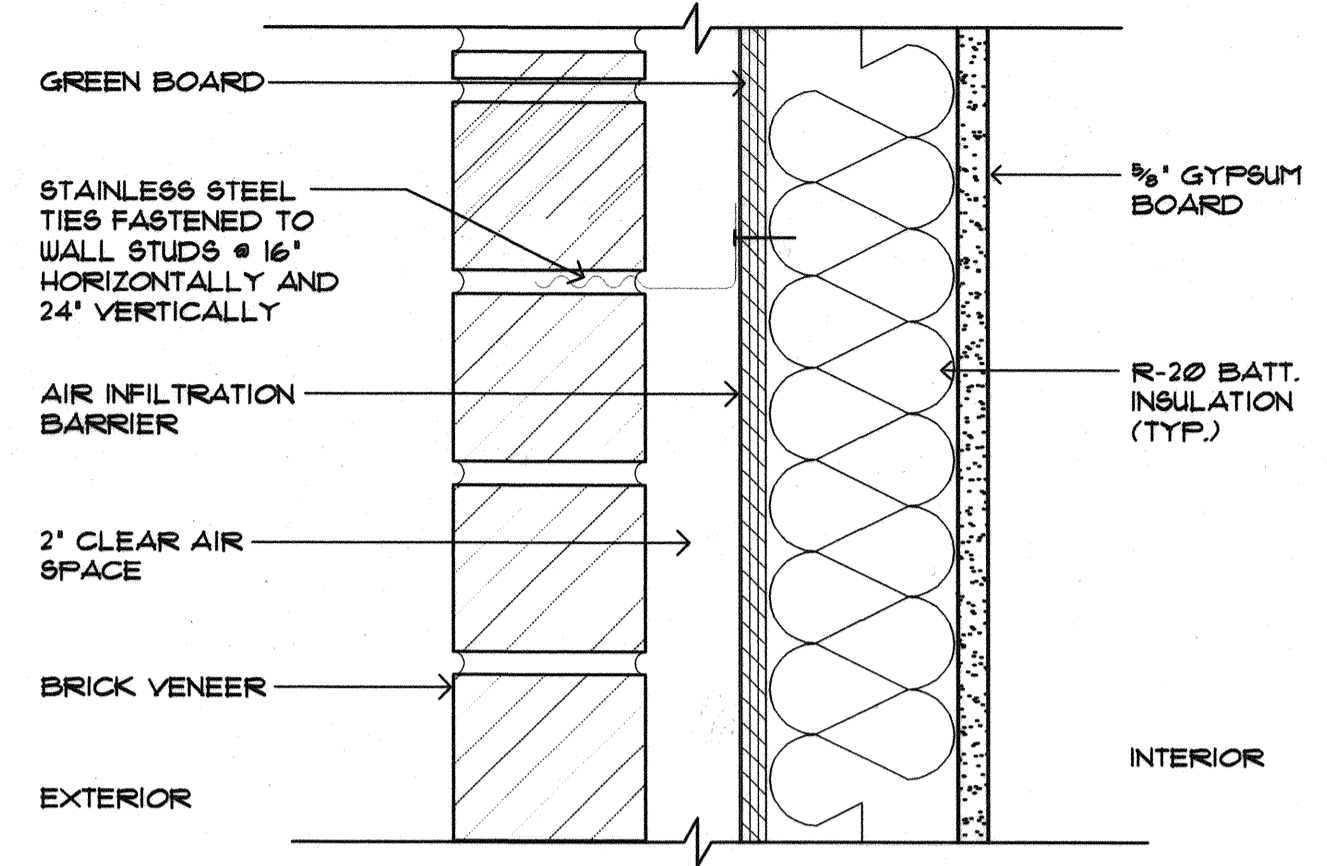
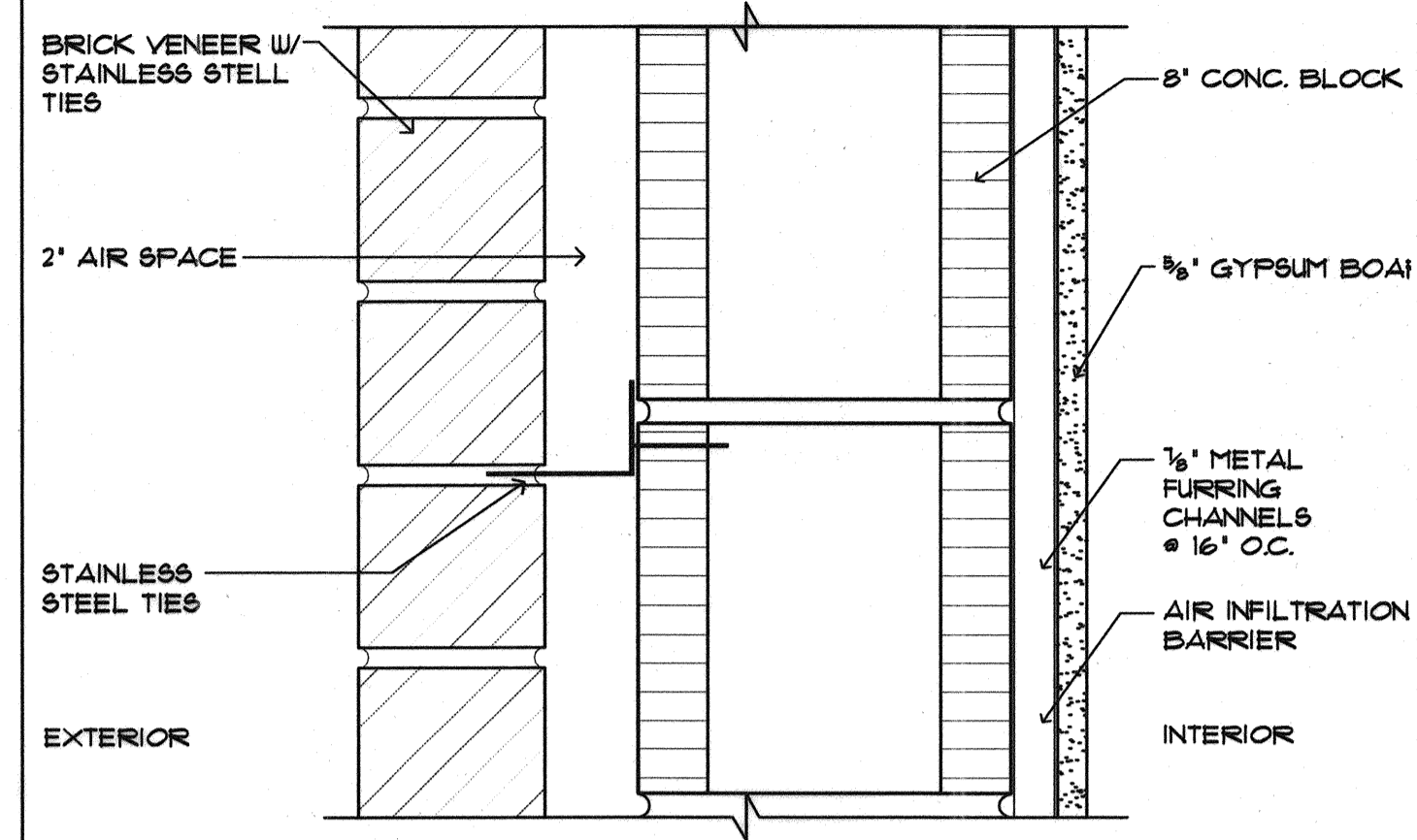


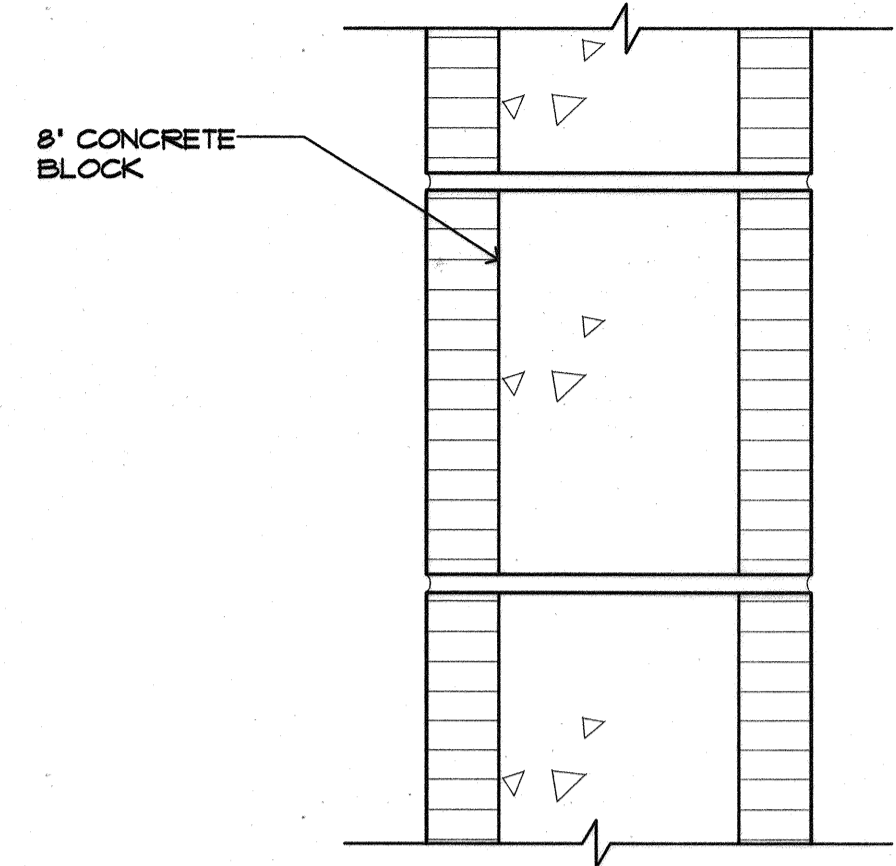
M-1



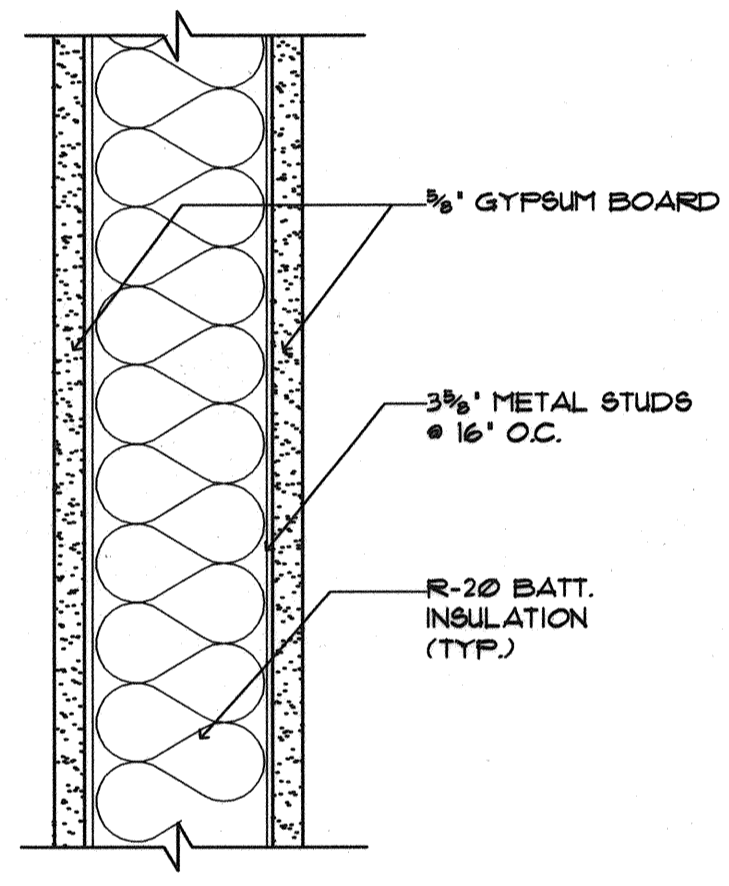
M-2



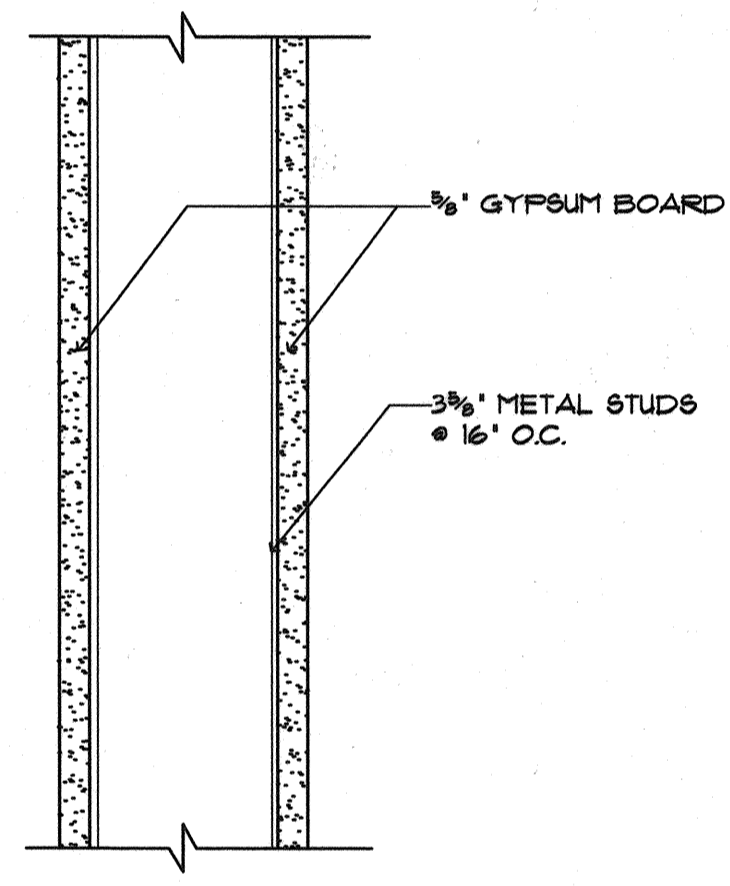
M-3



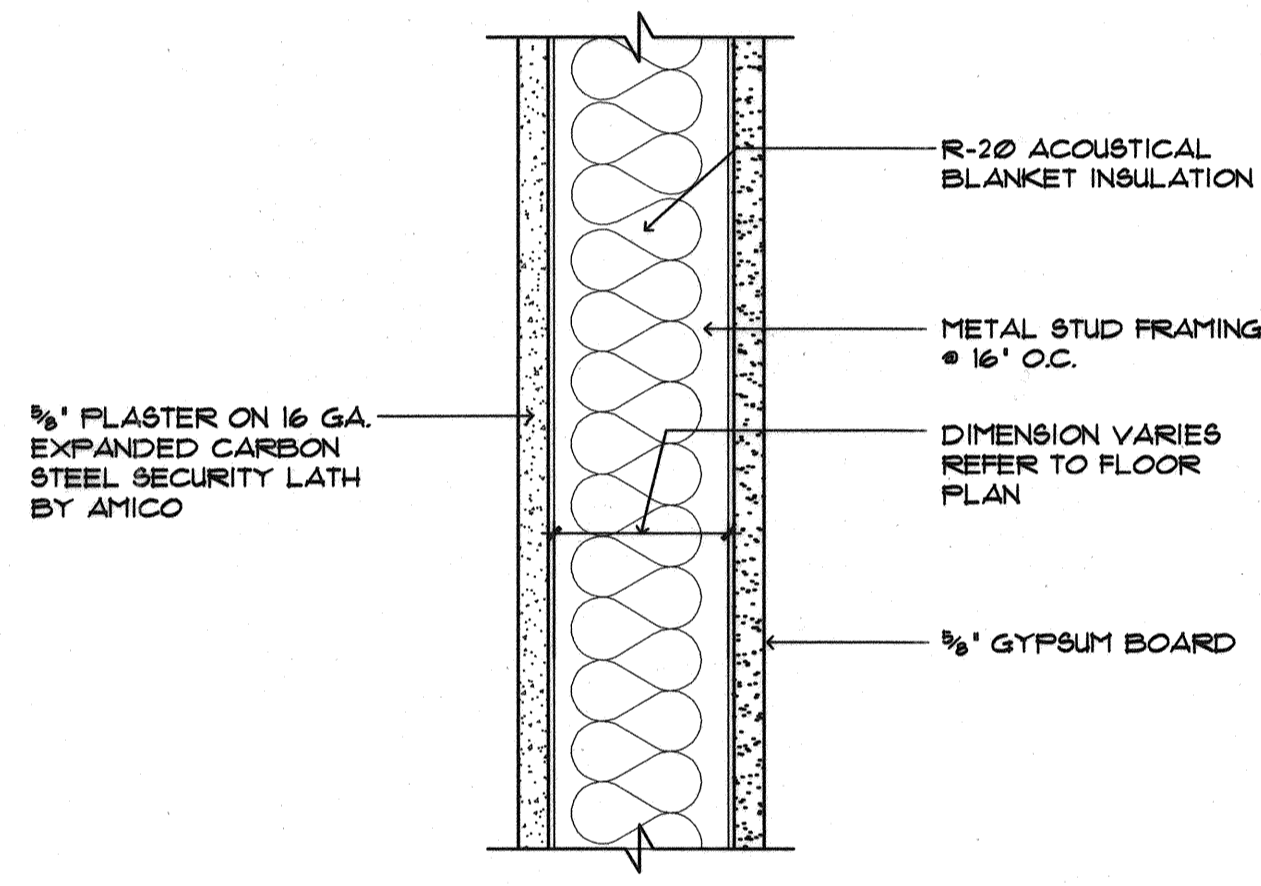
M-4



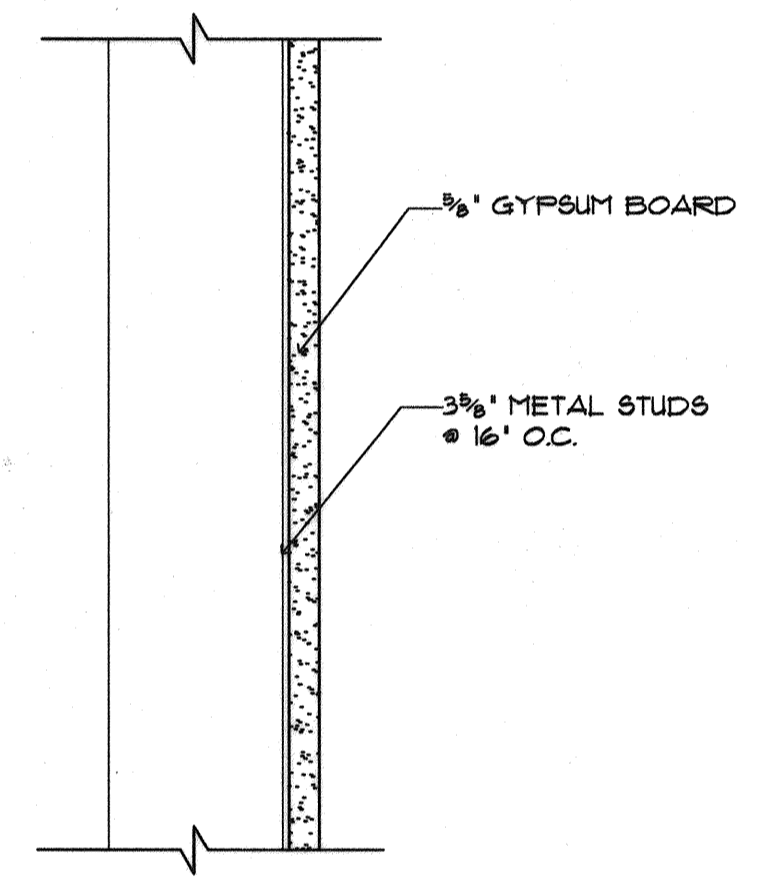
P-1



P-2

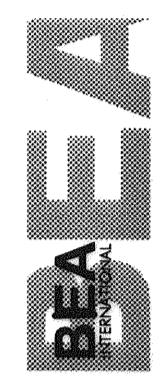


P-3

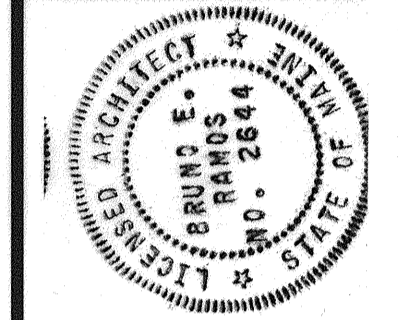


P-4

IN ASSOCIATION WITH:
GORRILL PALMER CONSULTING ENGINEERS
PAUL POTTE ARCHITECTS
WINTON SCOTT ARCHITECTS
HALEY & ALDRICH



STATE OF MAINE
DEPARTMENT OF TRANSPORTATION
PROJECT NUMBER 009215.00
PIN 009215.00



PROJ. MANAGER	PAUL POTTE	BY	DATE
DESIGN-DETAILED			
CHECKED-REVIEWED			
DESIGN-DETAILED2			
DESIGN-DETAILED3			
REVISIONS 1			
REVISIONS 2			
REVISIONS 3			
REVISIONS 4			
FIELD CHANGES			

SIGNATURE
P. LICENCE NUMBER
ARC 2644
DATE
10/8/2004

CITY OF PORTLAND
OCEAN GATEWAY PHASE 1
WALL ASSEMBLIES

A603-V