

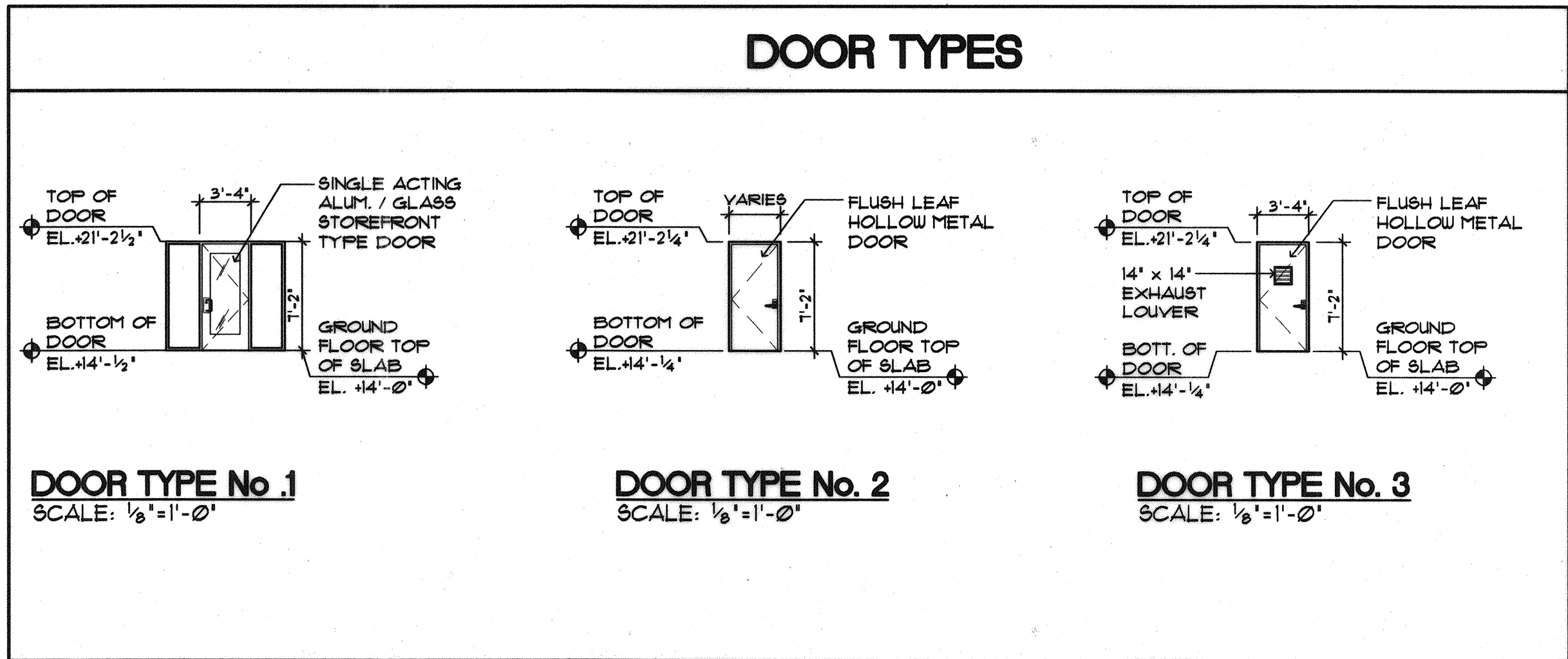
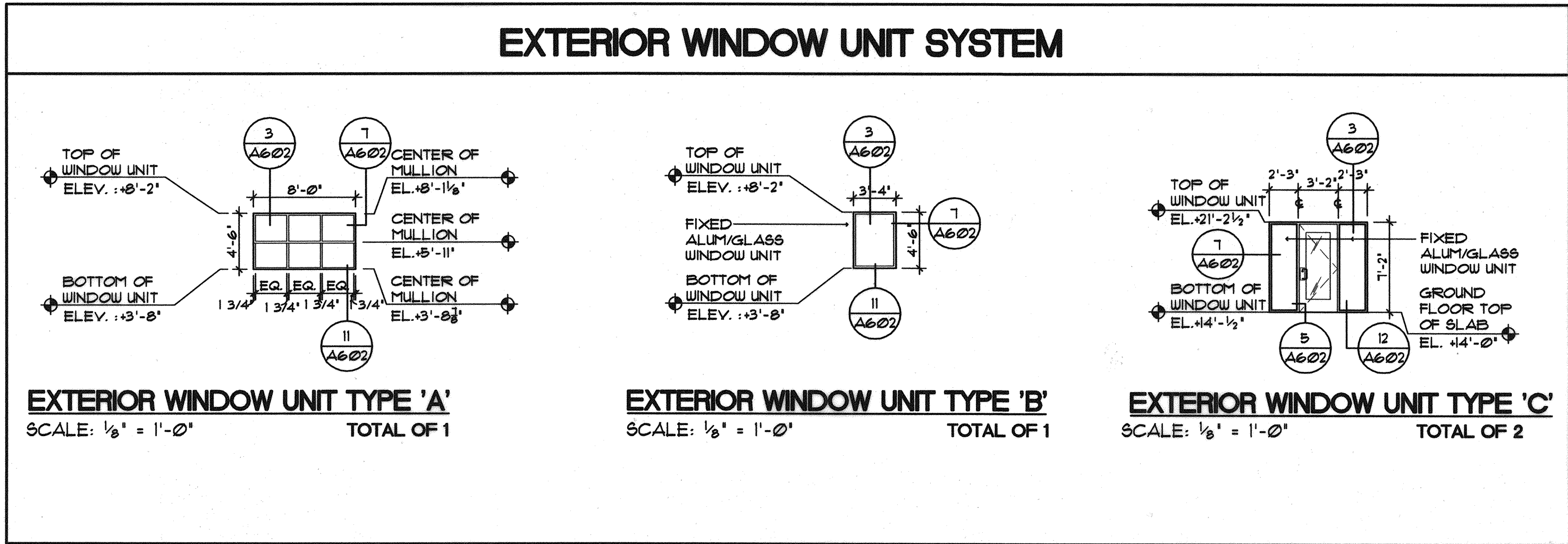
Filename: I:\Server1\projects\02-0818 Maine Int. Ferry Terminal\PHASE 1\Architecture\FINAL CONSTRUCTION DOCUMENTS\VEHICLE INSPECTION\20343802-V-A601.dwg, Oct 08, 2004 - 1:40pm

FINISH SCHEDULE

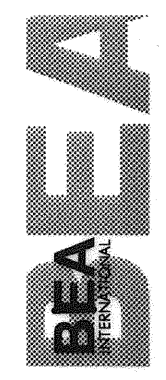
ROOM No.	ROOM NAME	FLOORING									BASE		WALLS								CEILING				REMARKS																																
													NORTH		SOUTH		EAST		WEST																																						
		1 CERAMIC TILE	2 VINYL TILE	3 EXPOSED CONCRETE W/ SEALER	4	5	6	7	8	9	10	11 CERAMIC TILE - CT-1	12 VINYL TILE	13 EXPOSED CONCRETE W/ SEALER	14	15	16	17	18 GYPSUM BOARD	19 GLASS	20 CERAMIC TILE	21 PAINT	22 EXPOSED BLOCK	23 EPDM EXPOSED		24 GYPSUM BOARD	25 GLASS	26 CERAMIC TILE	27 PAINT	28 EXPOSED BLOCK	29 EPDM EXPOSED	30 GYPSUM BOARD	31 GLASS	32 CERAMIC TILE	33 PAINT	34 EXPOSED BLOCK	35 EPDM EXPOSED	36 GYPSUM BOARD	37 GLASS	38 CERAMIC TILE	39 PAINT	40 EXPOSED BLOCK	41 EPDM EXPOSED	42 ACoustICAL TILE	43 GYPSUM WALLBOARD	44 EXPOSED STRUCTURE	45 STUCCO	46 PAINT	47	48	49	50	51	52	53	54	
FIRST FLOOR																																																									
100	UNISEX RESTROOM	1									11							18	20			25			27								34	36			41	43																	8'-0"		
101	HALLWAY										12							18						27																																	8'-0"
102	OFFICE		3								12							18						22	25																														8'-0"		
103	INTERVIEW/SEARCH		3								12							18						22	25																													8'-0"			
104	DETENTION		3								12							18						22	25																													8'-0"			
105	LAN. CLOSET		3								12							18						22	25																												8'-0"				
106	UTILITY CLOSET		3								12							18						22	25																												8'-0"				
107	STAIRWELL		3								12							18						22	25																											VARIES					
108	EXISTING SECURITY OFFICE																																																				VARIES				
109	SPACE																																																								

DOOR SCHEDULE

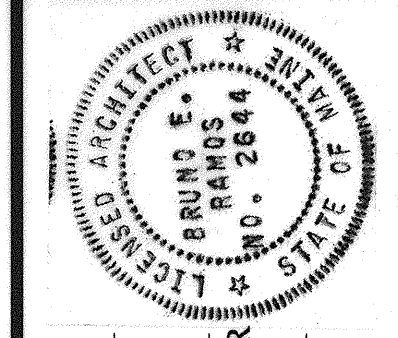
NUMBER	SIZE			DOOR		FRAME				MISC.		REMARKS	HARDWARE											
	WIDTH	HEIGHT	THK.	MATERIAL	TYPE	MTL	JAMB	HEAD	SILL	HDW.	LABEL		MORTISE CYLINDER	PASSAGE SET	LOCKSET	DEADLOCK	FLUSH BOLT	SURFACE BOLT	CLOSER	O.H. STOP	WALL BUMPER	THRESHOLD	WEATHERSTRIP	
FIRST FLOOR																								
100	3'-0"	7'-0"	1 3/4"	ALUM/GLASS	1	ALUM.	6 A602	1 A602	3 A602			W/ SELF-CLOSING DEVICE												
101	3'-0"	7'-0"	1 3/4"	METAL	2	IT.	6 A602	2 A602	6 A602															
102	3'-0"	7'-0"	1 3/4"	METAL	2	IT.	6 A602	2 A602	6 A602															
103	3'-0"	7'-0"	1 3/4"	METAL	2	IT.	6 A602	2 A602	6 A602															
104	3'-0"	7'-0"	1 3/4"	METAL	2	IT.	6 A602	2 A602	6 A602			W/ HOLD OPEN DEVICE												
105	2'-4"	7'-0"	1 3/4"	METAL	2	IT.	6 A602	2 A602	6 A602															
106	2'-4"	7'-0"	1 3/4"	METAL	2	IT.	6 A602	2 A602	6 A602															
107	2'-4"	7'-0"	1 3/4"	METAL	2	IT.	6 A602	2 A602	6 A602															
108	2'-4"	7'-0"	1 3/4"	METAL	2	IT.	6 A602	2 A602	6 A602															
109	2'-8"	7'-0"	1 3/4"	METAL	2	IT.	6 A602	2 A602	6 A602															



IN ASSOCIATION WITH:
GORRIALL PALMER CONSULTING ENGINEERS
2800 BEAULAC AVENUE
WINTON SCOTT ARCHITECTS
HALEY & ALDRICH



STATE OF MAINE
DEPARTMENT OF TRANSPORTATION



PROJ. MANAGER PAUL POTTLE
DESIGN-DETAILED
CHECKED-REVIEWED
DESIGN-DETAILED
DESIGN-DETAILED
REVISIONS 1
REVISIONS 2
REVISIONS 3
REVISIONS 4
FIELD CHANGES

SIGNATURE
P. LICENCE NUMBER
ARC 2664
DATE
10/8/2004

CITY OF PORTLAND
OCEAN GATEWAY PHASE 1
FINISH AND DOOR SCHEDULES
DOOR AND WINDOW TYPES

A601-V