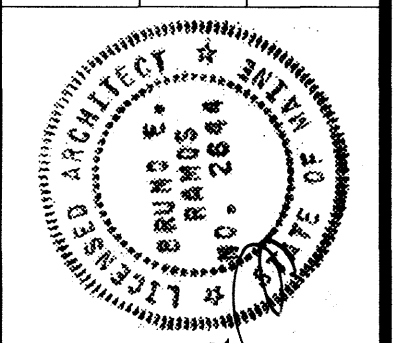


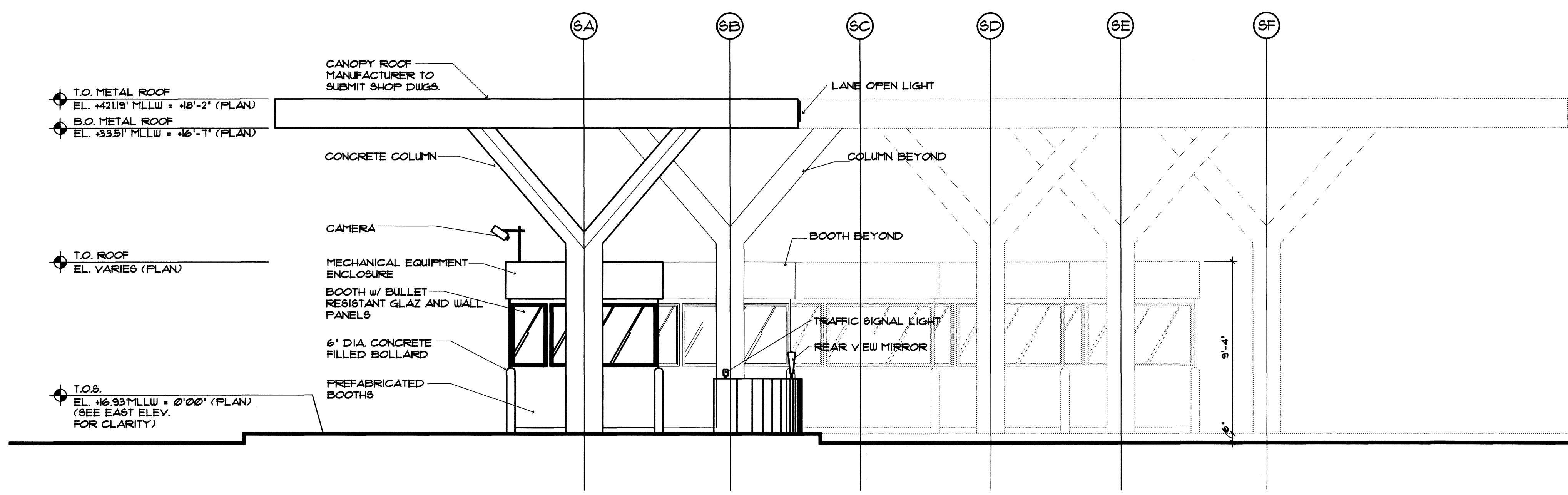
Filename: P:\02-0818 Maine Int. Ferry Terminal\PHASE 1\Architecture\FINAL CONSTRUCTION DOCUMENTS\VEHICLE INSPECTION\20343802-V-A301.dwg, Oct 27, 2004 - 4:34pm

IN ASSOCIATION WITH:  
**DEA**  
 GORRILL-PALMER CONSULTING ENGINEERS  
 FERATROVICH, NOTTINGHAM, & DRAGE  
 WINTON SCOTT ARCHITECTS  
 HALEY & ADRICH

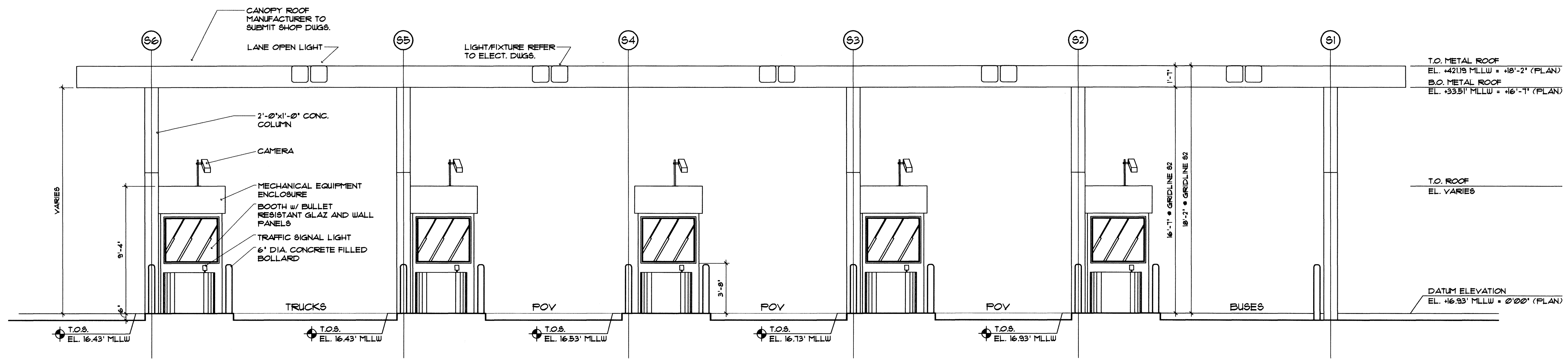
STATE OF MAINE  
 DEPARTMENT OF TRANSPORTATION  
 PROJECT NUMBER 009215.00  
 PIN 009215.00



PROJ. MANAGER	PAUL POTTLE	DATE	
DESIGN-DETAILED		BY	
CHECKED-REVIEWED			
DESIGN-DETAILED			
REVISIONS 1			
REVISIONS 2			
REVISIONS 3			
REVISIONS 4			
FIELD CHANGES			



**PRIMARY INSPECTION BOOTH  
 SOUTH ELEVATION**  
 SCALE: 1/4"=1'-0"



**PRIMARY INSPECTION BOOTH  
 EAST ELEVATION**  
 SCALE: 3/16"=1'-0"

- NOTE**
1. PLAN DATUM ELEVATION  
 0'-0" = 16.93' MLLW
  2. T.O.S. ELEVATION • EACH GRIDLINE  
 VARIES REFER TO SHEET A201-V  
 FOR CLARITY
  3. PROVIDE EMBEDDED ANGLE IRON  
 AT CURB EDGE AND WELDED WIRE  
 3" MINIMUM FROM OUTSIDE FACES OF  
 CONCRETE FD&F (TYPICAL)

CITY OF PORTLAND  
 OCEAN GATEWAY PHASE 1  
 EXTERIOR BUILDING ELEVATIONS

A301-V  
 228 OF 288