

PROJ. MANAGER	PAUL POTTLE
DESIGN-DETAILED	
CHECKED-REVIEWED	
DESIGN-DETAILED	
DESIGN-DETAILED	
REVISIONS 1	
REVISIONS 2	
REVISIONS 3	
REVISIONS 4	
FIELD CHANGES	
SIGNATURE	
P. LICENSE NUMBER	ARC 2684
DATE	10/8/2004

CITY OF PORTLAND
 OCEAN GATEWAY PHASE 1

LIFE SAFETY PLAN

A101-V

LEGEND:

	OCCUPANT LOAD / AREA
	TRAVEL DISTANCE
	GROSS SQUARE FOOT AREA
	STAIR OR DOOR EXIT CAPACITY
	ASSEMBLY (WAITING, CONCENTRATED W/NOT FIXED CHAIRS) USE #1 SF/PERSON
	ASSEMBLY (WAITING, CONCENTRATED) USE #3 SF/PERSON
	ACCESSORY USE ('NO OCCUPANCY')
	OFFICE USE #100 SF/PERSON
	MECHANICAL #300 SF/PERSON
	STORAGE USE #300 SF/PERSON
	FIRE-RATED DOOR AND FRAME 'B' LABEL 1 1/2 HRS.
	FIRE RATED WALL / PARTITION (HRS. AS NOTED)
	FE-1 SURFACE MOUNTED FIRE EXTINGUISHER & CABINET ABC TYPE 2-A RATED
	FE-2 SEMI-RECESSED FIRE EXTINGUISHER & CABINET ABC TYPE 2-A RATED
	INTERNALLY ILLUMINATED EXIT SIGN

CLEAR WIDTH OF DOOR, RAMP OR STAIR IN INCHES

TOTAL MAX. EXIT CAPACITY ALLOWABLE

NOTE:
 ALL LOAD FACTORS ARE TAKEN FROM THE 2003 BOCA NATIONAL BUILDING CODE (UNLESS NOTED OTHERWISE)

NOTE:
 ONE FIRE EXTINGUISHER SHALL BE PROVIDED FOR EVERY 3000 SQ. FT. WITH A MAXIMUM DISTANCE OF TRAVEL NOT EXCEEDING 75'-0". TOP OF EXTINGUISHER NOT TO EXCEED 5'-0" ABOVE FLOOR FINISH.

ALL FIRE EXTINGUISHERS PROVIDED WILL BE A MIN 2A 10BC.

CODE SUMMARY

BOCA BUILDING CODE 2003 AND NFPA

OCCUPANCY GROUP GROUP B - BUSINESS.

BUILDING TYPE: LOWER LEVEL TYPE 2C - NOT PROTECTED

- EXTERIOR WALLS
- LOADBEARING: 0 HRS. FIRE RATED (F.R.)
- NON LOADBEARING: 0 HRS. F.R.
- FIRE 4 PARTY WALLS: 2 HRS. F.R.
- FIRE ENCLOSURE OF EXITS: 2 HRS. F.R.
- SHAFTS (INCLUDE ELEVATOR): 2 HRS. F.R.
- INTERIOR LOADBEARING WALLS, LOADBEARING PARTITION, COLUMN, GIRDERS, TRUSSES (OTHER THAN ROOF TRUSSES) AND FRAMING
- SUPPORTING MORE THAN ONE FLOOR: 0 HRS. F.R.
- SUPPORTING ONE ROOF ONLY OR A ROOF: 0 HR. F.R.
- STRUCTURAL MEMBER SUPPORTING WALL
- 0 HR. F.R.
- FLOOR CONSTRUCTION INCLUD. BEAMS
- 0 HR. F.R.
- ROOF CONSTRUCTION INC. BEAMS, TRUSSES, FRAMING AND ROOF DECK
- 15' OR LESS HEIGHT OF LOWER MEMBER: 0 HR. F.R.
- MORE THAN 15' BUT LESS THAN 20': 0 HR. F.R.
- MORE THAN 20': 0 HR.

EGRESS WIDTHS: NFPA (MOST RESTRICTIVE)

DOORS:	100 PERSONS P/EGRESS UNIT (SIMPLE DOOR)	2 INCH/PERSON
	300 PERSONS P/EGRESS UNIT (DOUBLE DOOR)	2 INCH/PERSON
STAIRS:		3 INCH/PERSON
RAMP:		2 INCH/PERSON

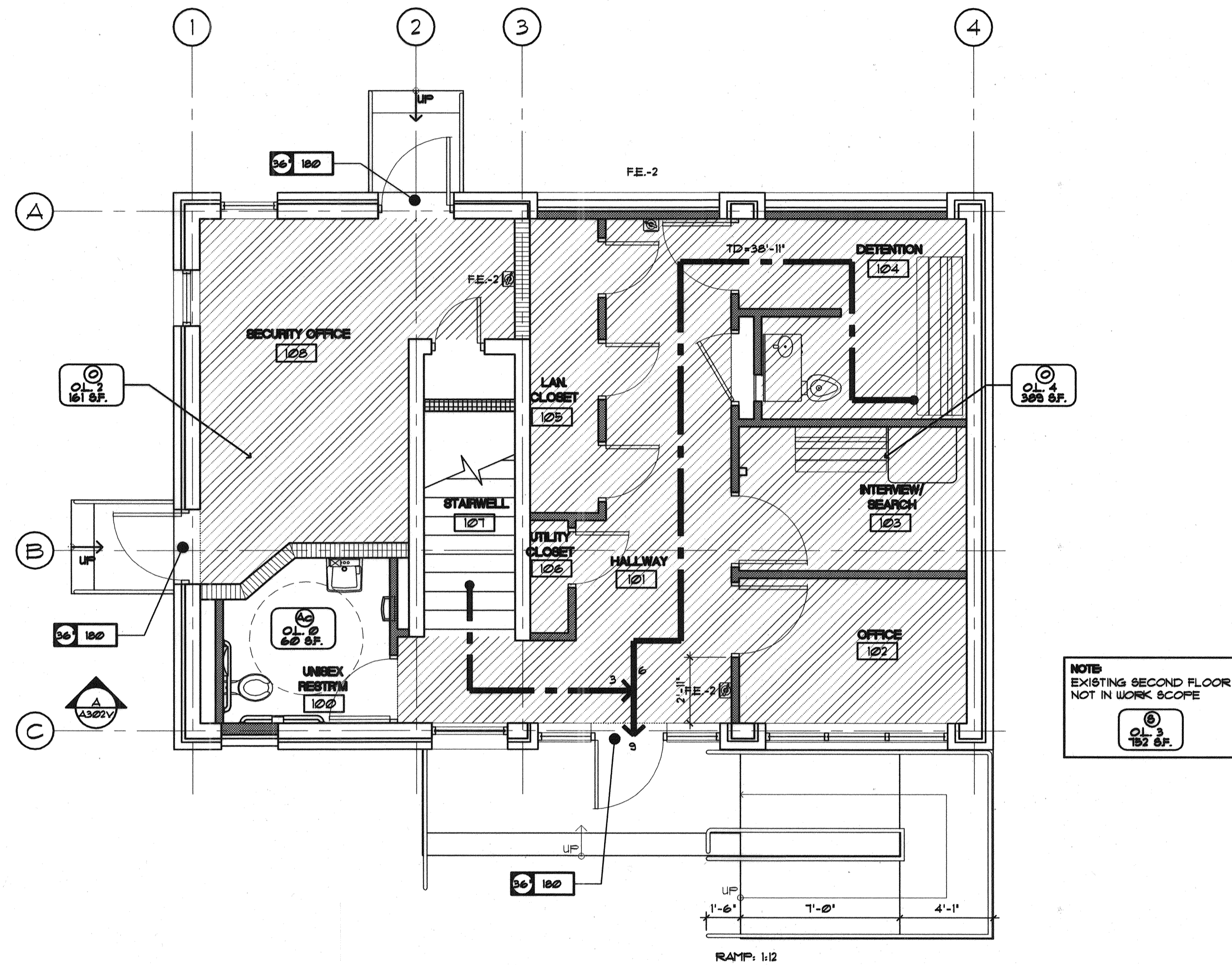
ALLOWABLE AREAS: 14,400 sq.ft. (503 BOCA)

ALLOWABLE HEIGHT: 3 ST. 40' HEIGHT (503 BOCA)

MAX. TRAVEL DIST.: 200'-0" UNSPRINKLERED

MAX. DEAD END: 20 FEET

NO. OF EXITS REQD: 1 (OCCUPANT LOAD: LESS THAN 50 PERS. AND DISTANCE TO EXIT LESS THAN 75 FT.)



FIRST FLOOR LIFE SAFETY PLAN
 SCALE: 1/4" = 1'-0"

OCCUPATION TOTALS:
 6 OCCUPANTS # FIRST FLOOR
 3 OCCUPANTS # SECOND FLOOR
 9 TOTAL OCCUPANTS

NOTE:
 EXISTING SECOND FLOOR NOT IN WORK SCOPE