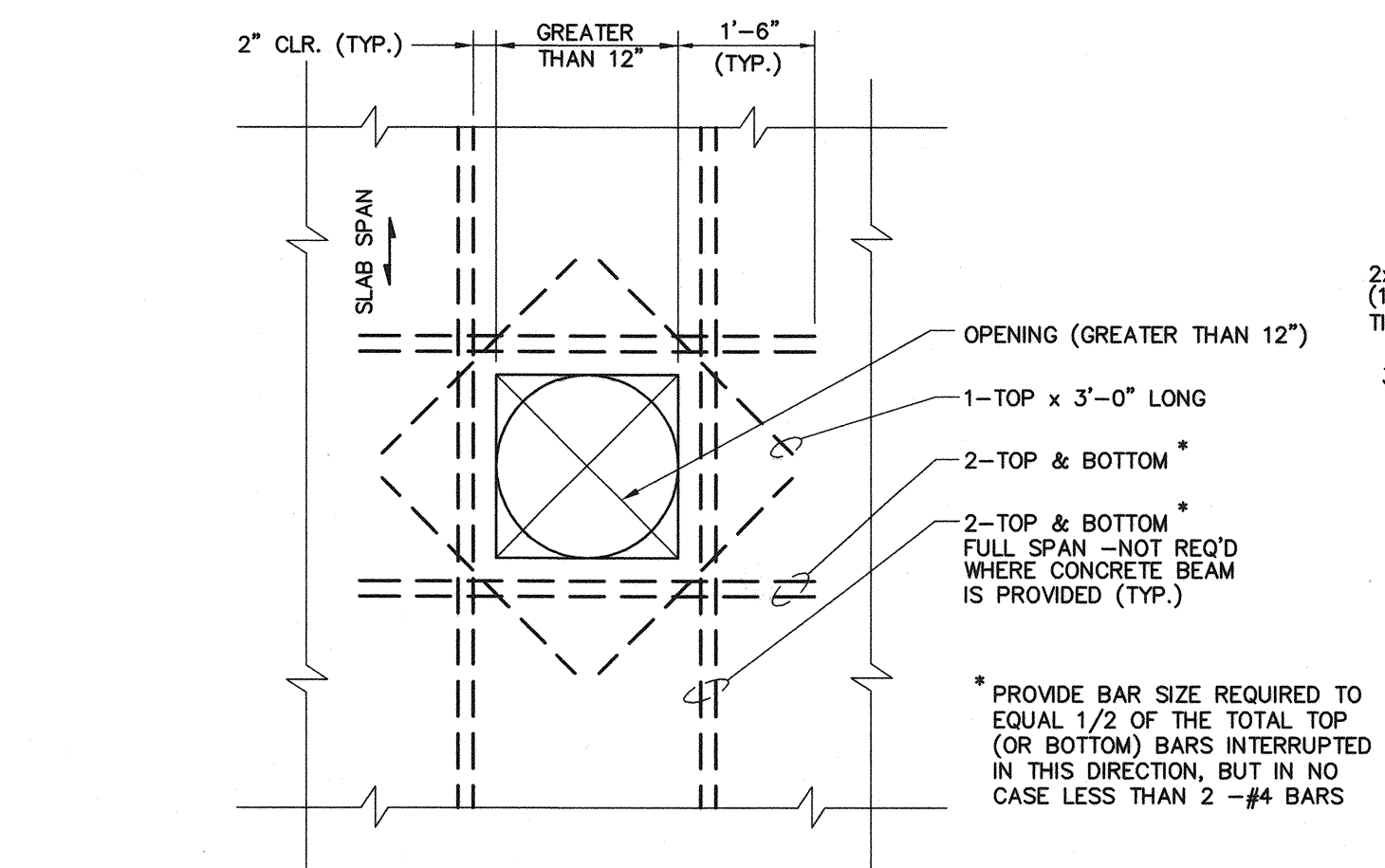
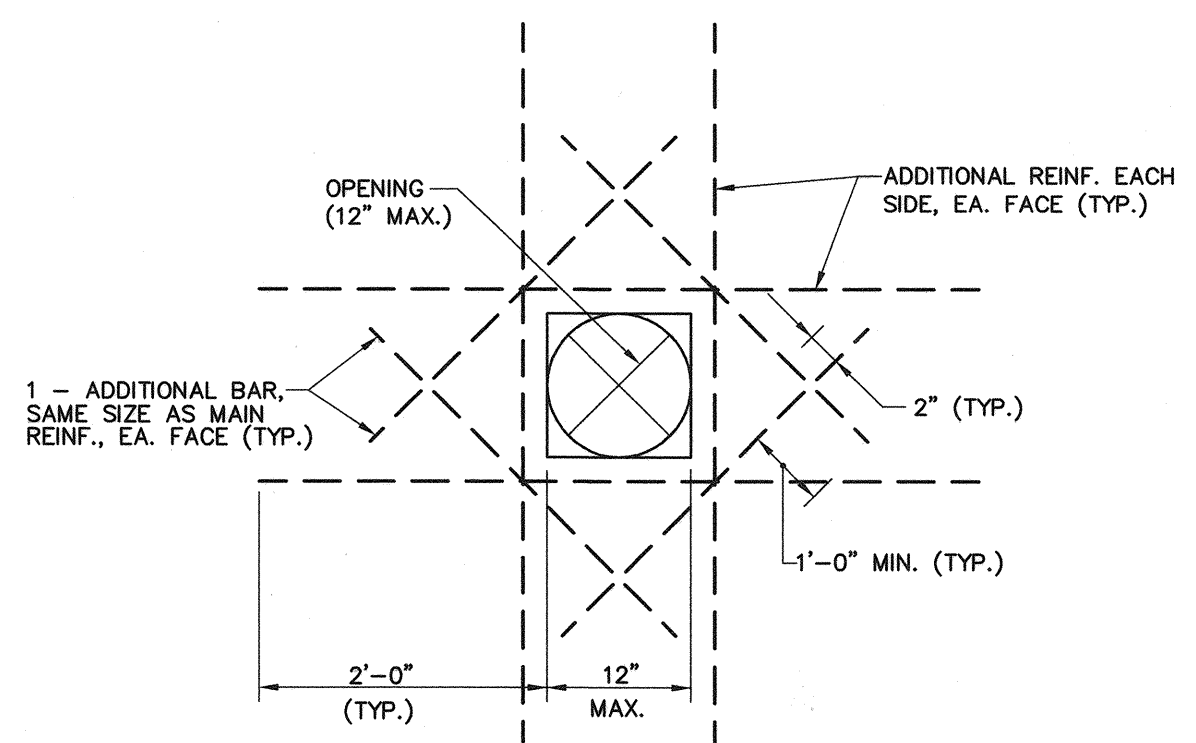
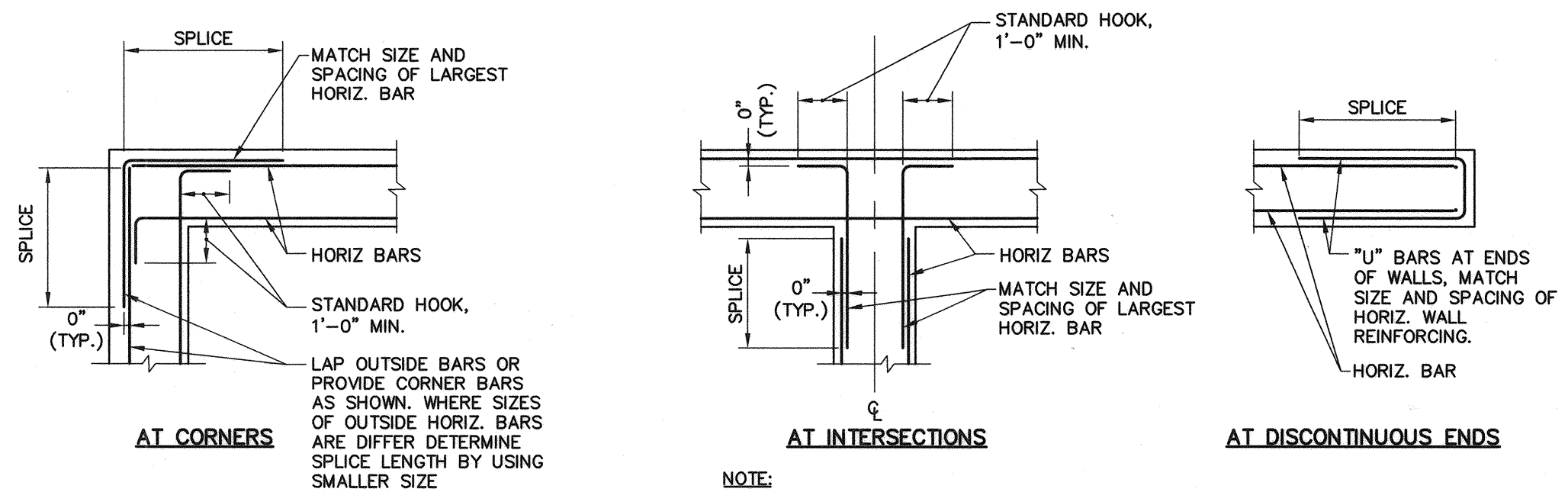


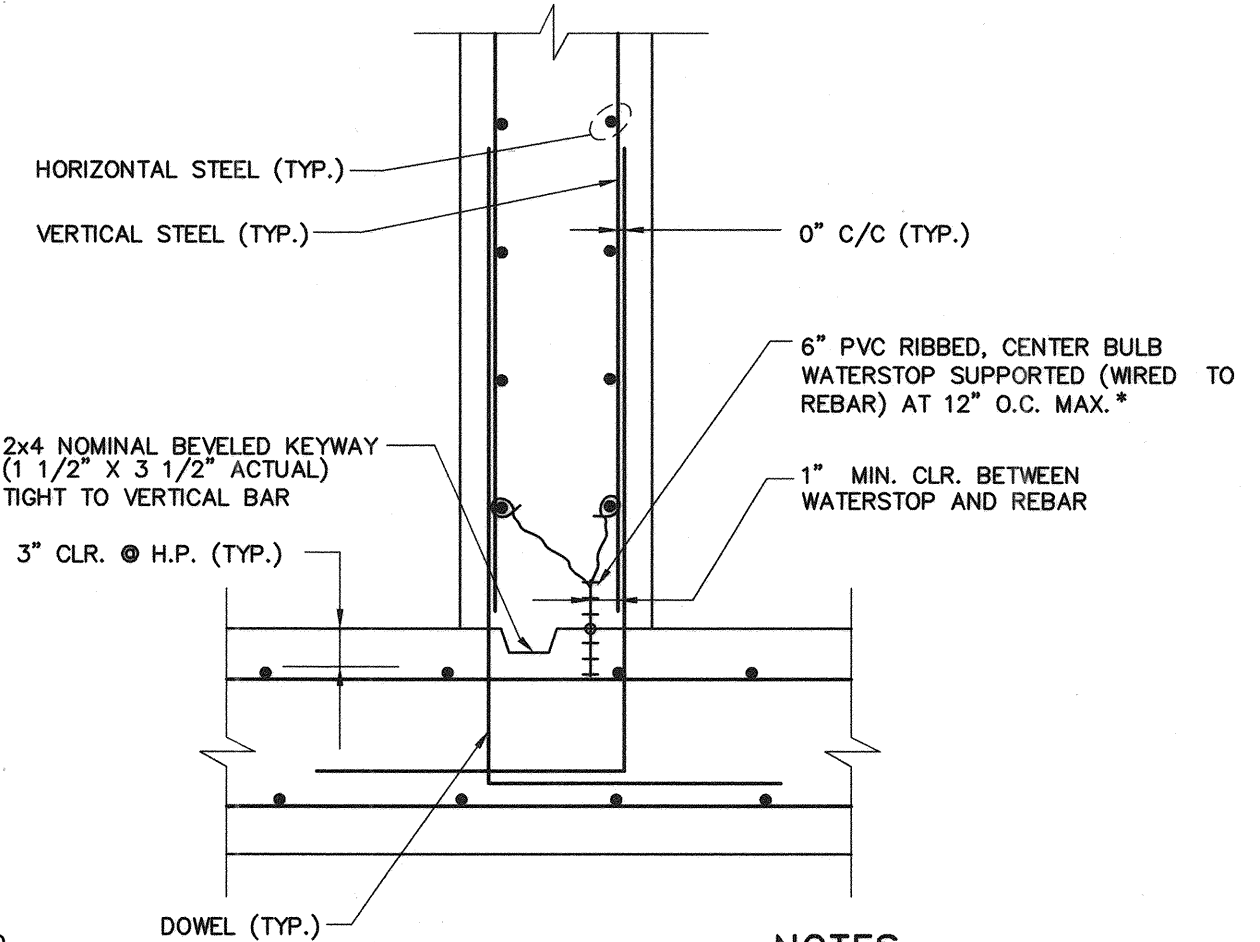
Filename: O:\203438 Ocean Gateway - Phase 1 Engineering\Project Deliverables\2004-10-27. Issued for BID\CAD Drawings\Civil\20343802-R-S202.dwg, Oct 08, 2004 - 3:13pm



WALL/SLAB OPENING DETAIL
N.T.S.

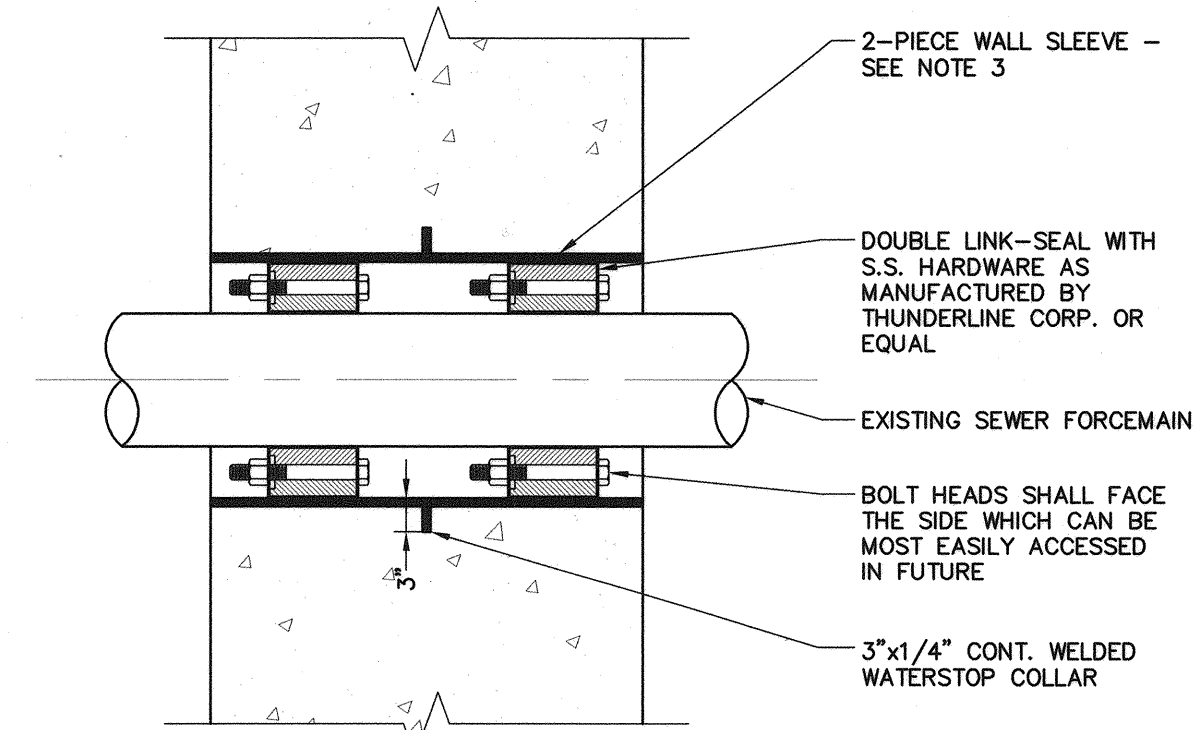


HORIZONTAL WALL REINFORCEMENT DETAILS
N.T.S.



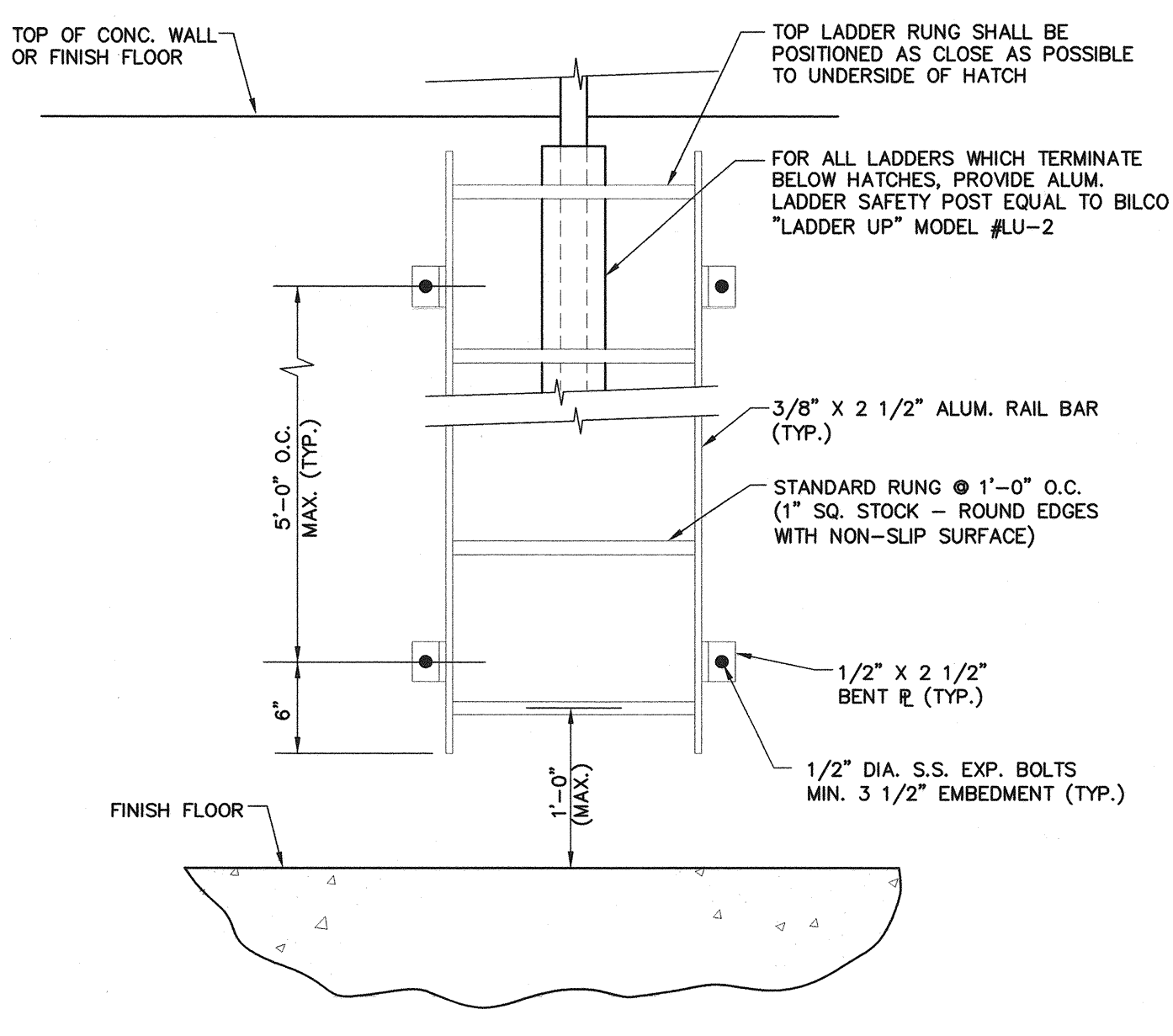
- NOTES:**
1. MAKING HOLES IN WATERSTOP FOR WIRE SUPPORT SHALL NOT BE PERMITTED
 2. CONTRACTOR MAY USE UPURN KEYWAY WITH WATERSTOP UPON APPROVAL FROM ENGINEER

WATERSTOP DETAIL
N.T.S.



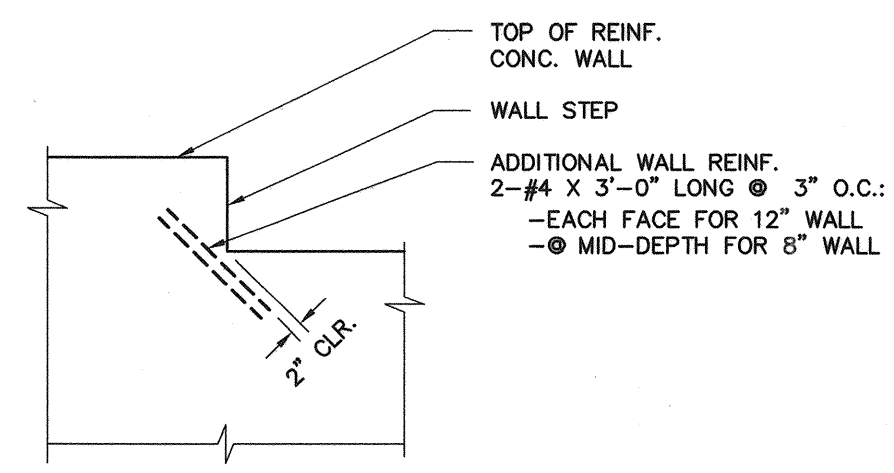
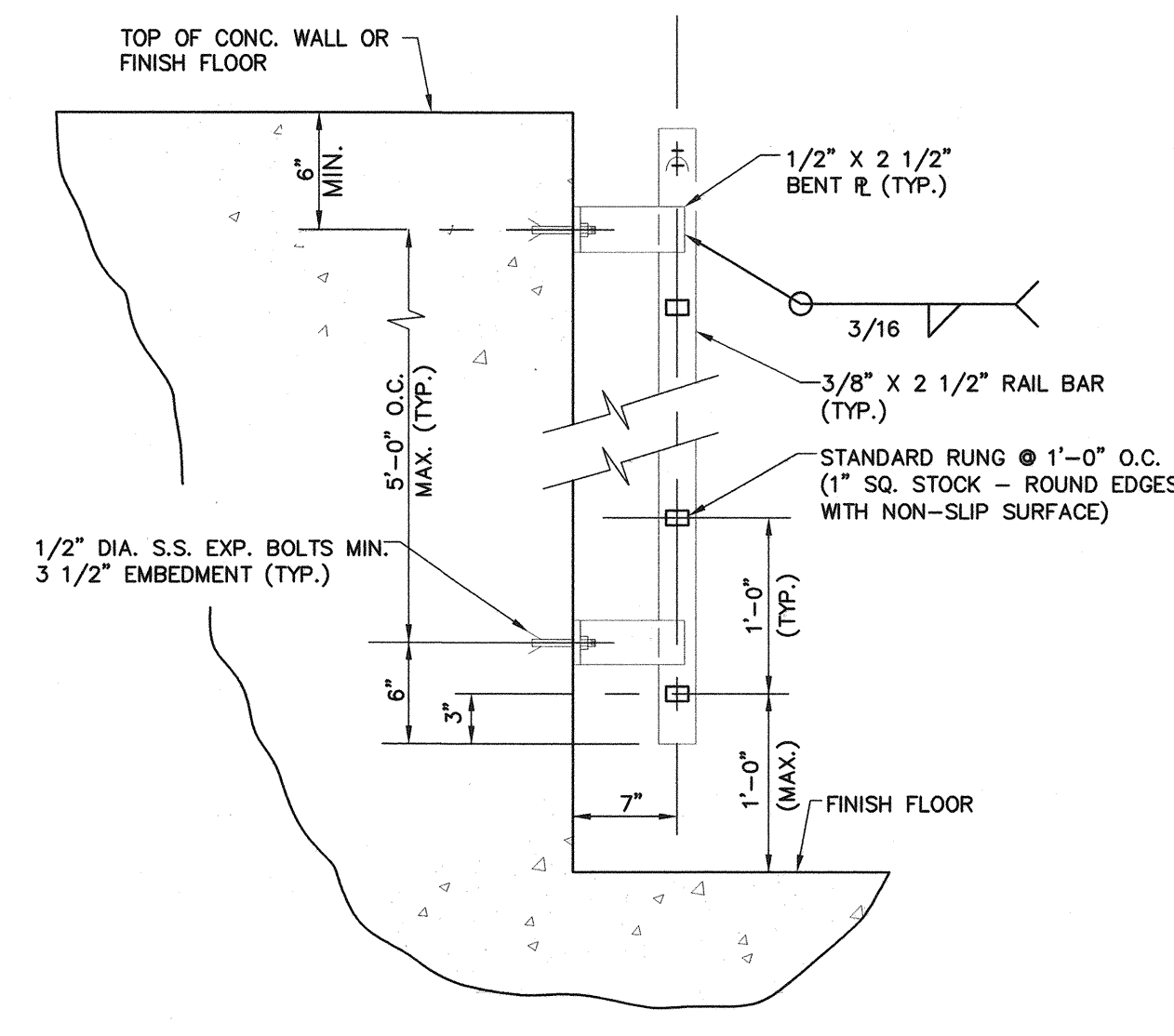
- NOTES:**
1. REFER TO MECHANICAL, ELECTRICAL, AND HVAC DRAWINGS FOR LOCATION, TYPES, AND SIZES OF ALL PIPE PENETRATIONS.
 2. LINK SEAL AND WALL SLEEVE SIZE SHALL BE AS RECOMMENDED BY MANUFACTURER FOR EACH PIPE SIZE.
 3. 2-PIECE WALL SLEEVE: NEW FOREMAIN TUNNEL SHALL BE BUILT AROUND EXISTING FOREMAIN. THEREFORE, PIPE SLEEVE SHALL BE IN 2 PIECES AND FIELD WELDED CONT. SLEEVE SHALL BE 1/4\"/>

PIPE PENETRATION DETAIL
N.T.S.

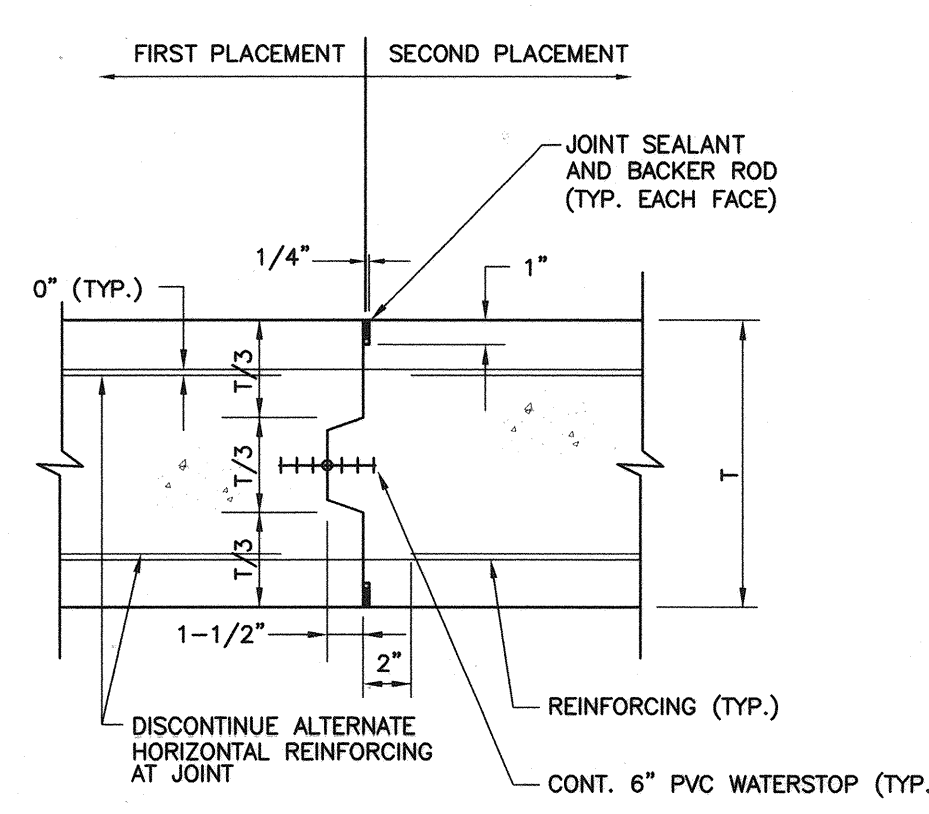


NOTE:
ALL ALUMINUM SHALL BE 6061-T6 GRADE. ALUMINUM SURFACES IN CONTACT WITH CONCRETE TO BE PAINTED WITH BITUMASTIC OR COAL-TAR EPOXY.

LADDER DETAIL
N.T.S.



STEPPED WALL DETAIL
N.T.S.

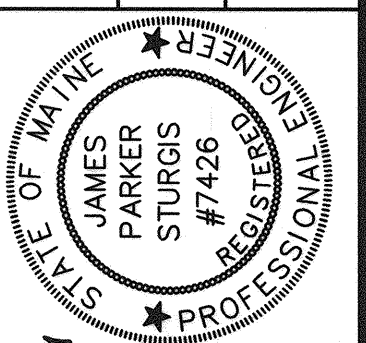


NOTE:
SHOULD CONTRACTOR REQUEST TO USE OTHER WALL CONSTRUCTION JOINTS, LOCATION SHALL BE APPROVED BY THE ENGINEER.

WALL OR SLAB CONSTRUCTION/ CONTROL JOINT
N.T.S.

WOODARD & CURRAN
Engineering • Science • Operations
41 Hutchins Drive • Portland, Maine 04102

STATE OF MAINE
DEPARTMENT OF TRANSPORTATION
PROJECT NUMBER 009215.00
PIN 009215.00



JAMES P. PARKER
SIGNATURE
7426
P.E. NUMBER
10-8-04
DATE

PROJ. MGR.	DATE	BY	REVISIONS
PAUL POTTLE		JRB	1
DESIGN-DETAILED		JRB	2
CHECKED-REVIEWED		JRB	3
DESIGN-DETAILED		JRB	4
REVISIONS 1			
REVISIONS 2			
REVISIONS 3			
REVISIONS 4			
FIELD CHANGES			

CITY OF PORTLAND
OCEAN GATEWAY PHASE 1

TYPICAL DETAILS

S302-R