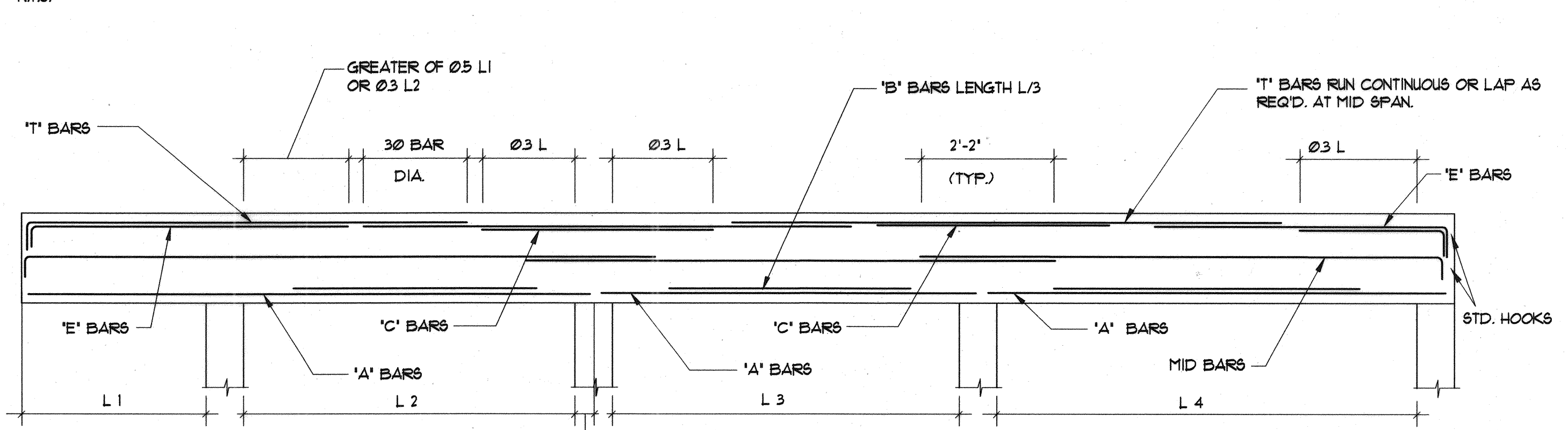
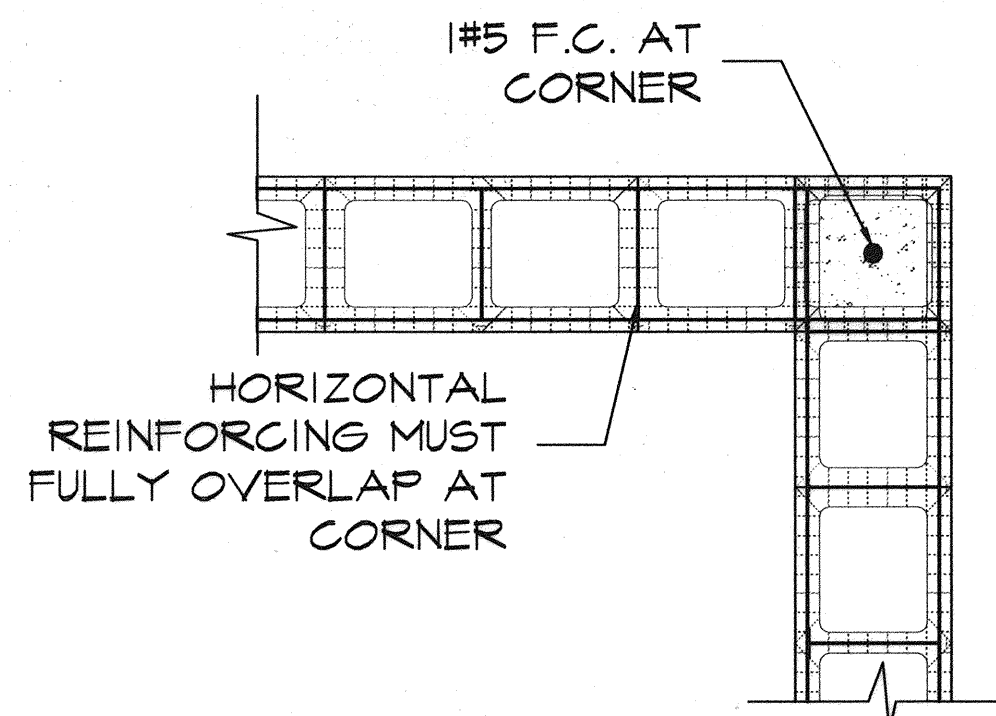


TIE COLUMN SCHEDULE			
MARK	SIZE (INCHES)	VERT. BAR	TIES
TC-1	8 x 12	4 #5	#3 @12
TC-2	SEE DETAIL 1	6 #5	#3 @12
TC-3	SEE DETAIL 2	8 #5	#3 @12
TC-4	8 x 24	6 #5	#3 @8

**TYPICAL BEAM BAR PLACING DIAGRAM**  
N.T.S.

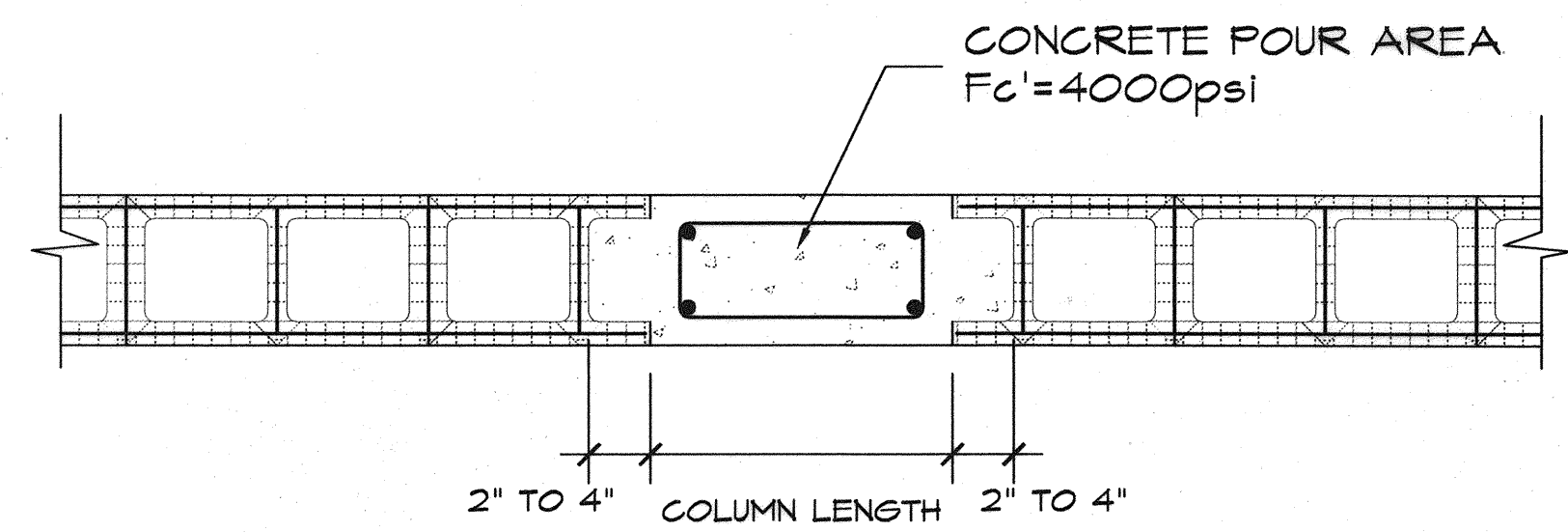


- NOTE:
- 'L' IS THE LONGER OF ADJACENT SPAN.
  - 8" WIDE BEAMS TAKE A MAXIMUM OF 2 BARS PER LAYER.
  - STIRRUPS TO BE CLOSED TYPE WITH 135° HOOK.
  - MID BARS TO BE #4@12" EF. WHENEVER BEAM DEPTH IS LARGER THAN 2'-0".

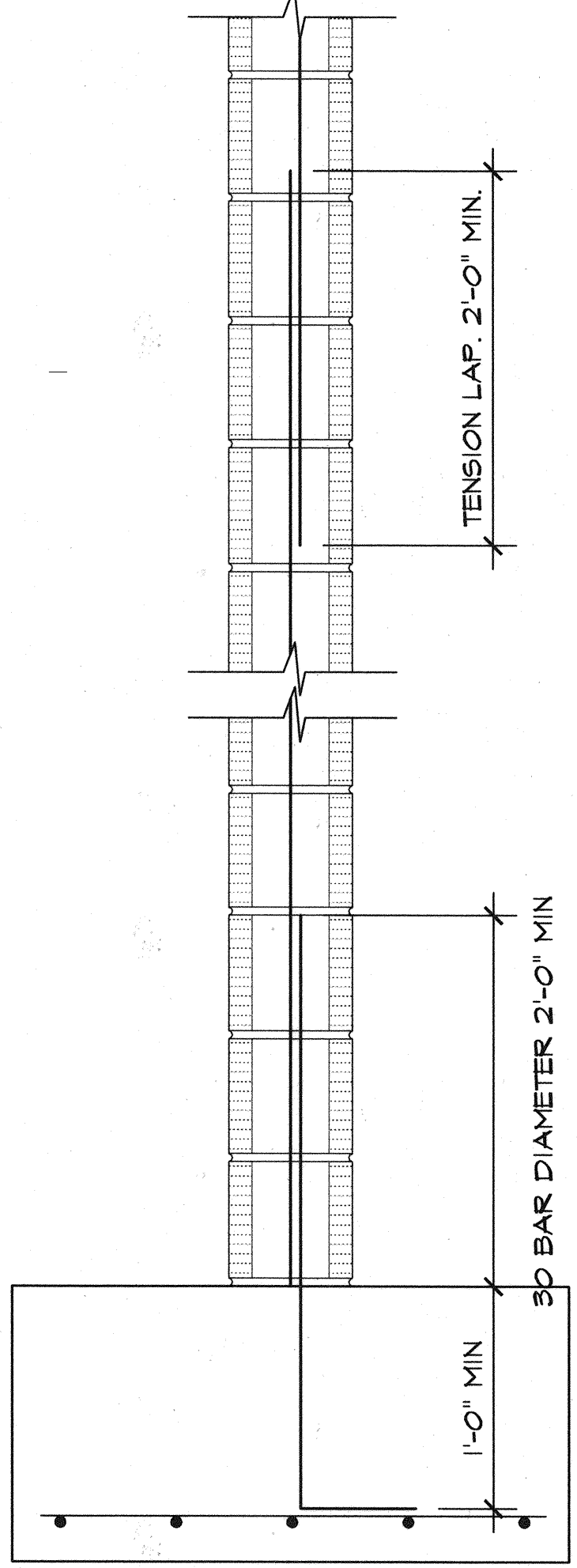


**MANSORY WALL CORNER DETAIL**  
N.T.S.

**TC-2 CONCRETE TIE COLUMN**  
N.T.S.

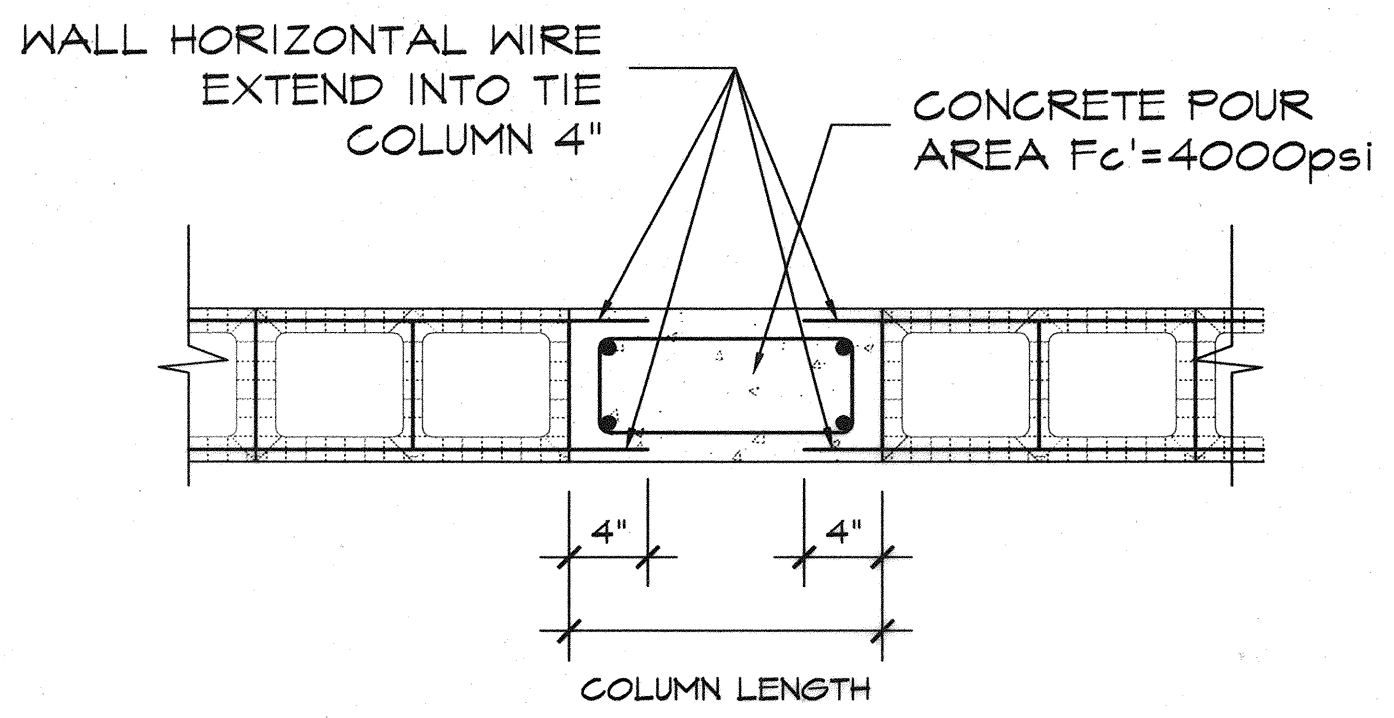


**TC-3**



BEAM SCHEDULE									
MARK	T.O.B. ELEV.	SIZE (INCHES)	BOTTOM. REINF.		TOP REINFORCING			MID. BARS	TIES
			'A' BARS	'B' BARS	'C' BARS	'T' BARS	'E' BARS		
2TB-1	+13'-8"	8 x 30	2 #6				2 #6		#3 @12
2TB-3	+19'-2"	8 x 12	2 #6				2 #6		#3 @12
2B-1	+13'-8"	12 x 36	3 #9				3 #9		#3 @12
2B-2	+13'-8"	12 x 36	2 #9				2 #9	2 #5 EF.	#3 @12
RTB-1	+29'-8" / +17'-6"	8 x 16	2 #6				2 #6		#3 @8
RTB-2	+29'-8"	8 x 16	2 #6				2 #6		#3 @8
RTB-3	+17'-6"	8 x 16	2 #6				2 #6		#3 @8
RTB-4	+25'-8"	8 x 16	2 #6				2 #6		#3 @8
RB-1	+29'-8"	8 x 16	2 #8				2 #8		#3 @8
RB-2	+29'-8"	8 x 16	2 #8				2 #8	1 #6 EF.	#3 @8
RB-3	+29'-8"	8 x 16	2 #8				2 #8		#3 @8
RB-4	+35'-8"	10 x 16	3 #6				3 #6		#3 @8

**TIE COLUMN CONNECTION TO BLOCK WALL (ALTERNATIVE 1)**  
N.T.S.

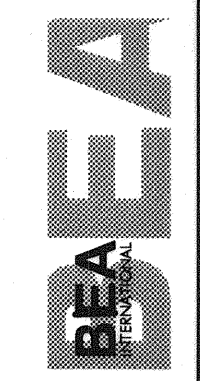


**TIE COLUMN CONNECTION TO BLOCK WALL (ALTERNATIVE 2)**  
N.T.S.

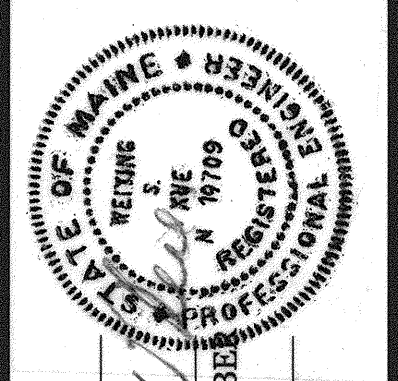
**REBAR LAP SPLICE REQUIREMENT**  
NOTE: APPLICABLE TO TIE COLUMNS REBARS.

CONCRETE FOOTING SCHEDULE				
MARK	SIZE WxLxD	REINFORCEMENT		REMARKS
		LONG.	TRANS.	
CF-800	8'0"x8'0"x24"	9 #6	9 #6	
CF-100	7'0"x7'0"x18"	8 #6 T4B	8 #6 T4B	OVER LAP w/ WF-36
CF-600	6'0"x6'0"x18"	7 #6	7 #6	
SCF-1206	12'0"x6'0"x24"	7 #6 T4B	13 #6 T4B	
SCF-1212	12'0"x12'0"x24"	13 #6 T4B	13 #6 T4B	CORNER CUT, SEE S100-R
WF-48	48' x L x 18'	5 #5 CONT.	#5 @12	
WF-36	36' x L x 18'	4 #5 CONT.	#5 @12	
WF-24	24' x L x 18'	3 #5 T4B	#3 @6 CLOSED TIES	LONG. BAR DEVELOPED 2'-0" INTO CONNECTED FOOTING

IN ASSOCIATION WITH:  
GERRILL PALMER CONSULTING ENGINEERS  
PERATROVICH, NOTTINGHAM & DRAGE  
WINTON SCOTT ARCHITECTS  
HALEY & ALDRICH



STATE OF MAINE  
DEPARTMENT OF TRANSPORTATION  
PROJECT NUMBER 009215.00  
PIN 009215.00



PROJ. MANAGER	PAUL POTTLE	DATE	
DESIGN-DETAILED		BY	
CHECKED-REVIEWED			
DESIGN-DETAILED			
REVISIONS 1		SIGNATURE	
REVISIONS 2		P. LICENSE NUMBER	PE 10709
REVISIONS 3		DATE	10/8/2004
REVISIONS 4			
FIELD CHANGES			

CITY OF PORTLAND  
OCEAN GATEWAY PHASE 1  
RECEIVING STATION  
SCHEDULES

S002-R