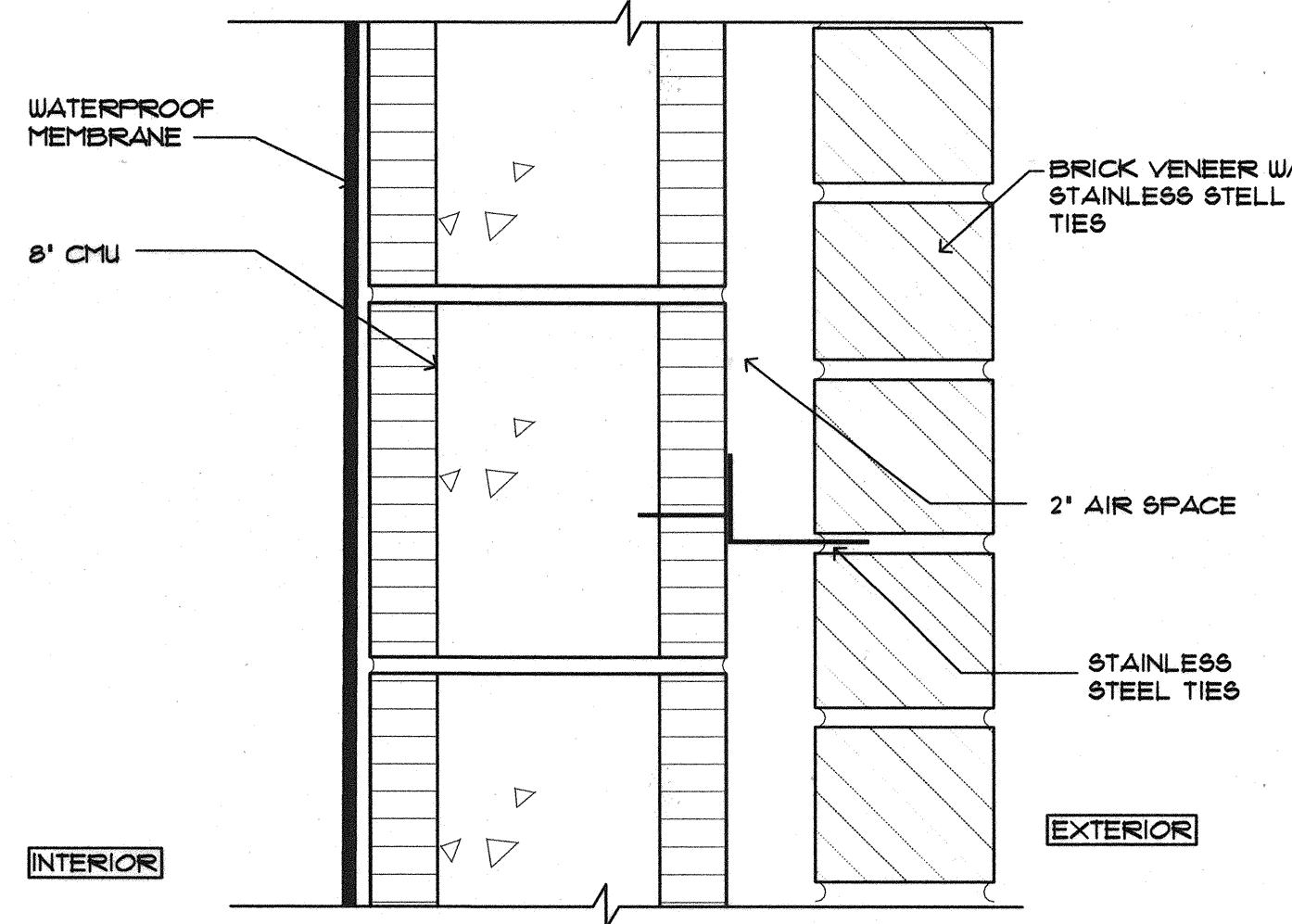
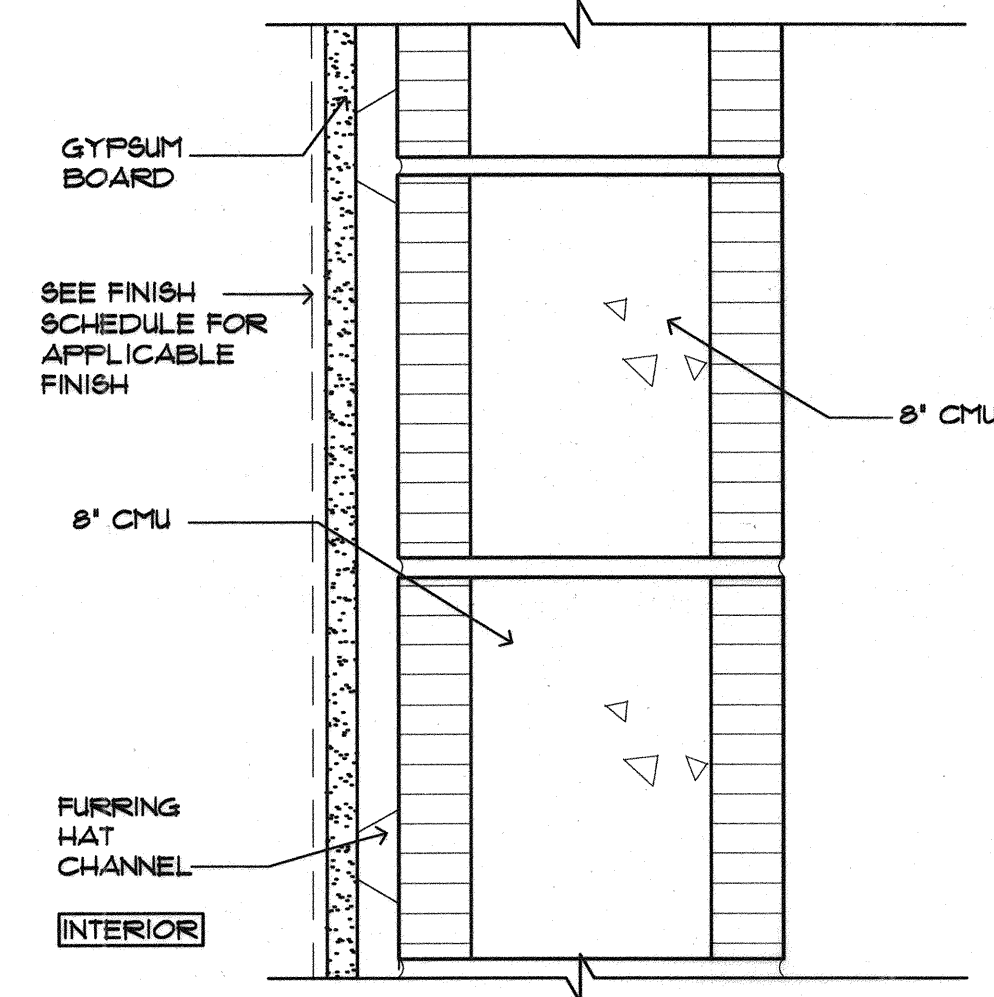


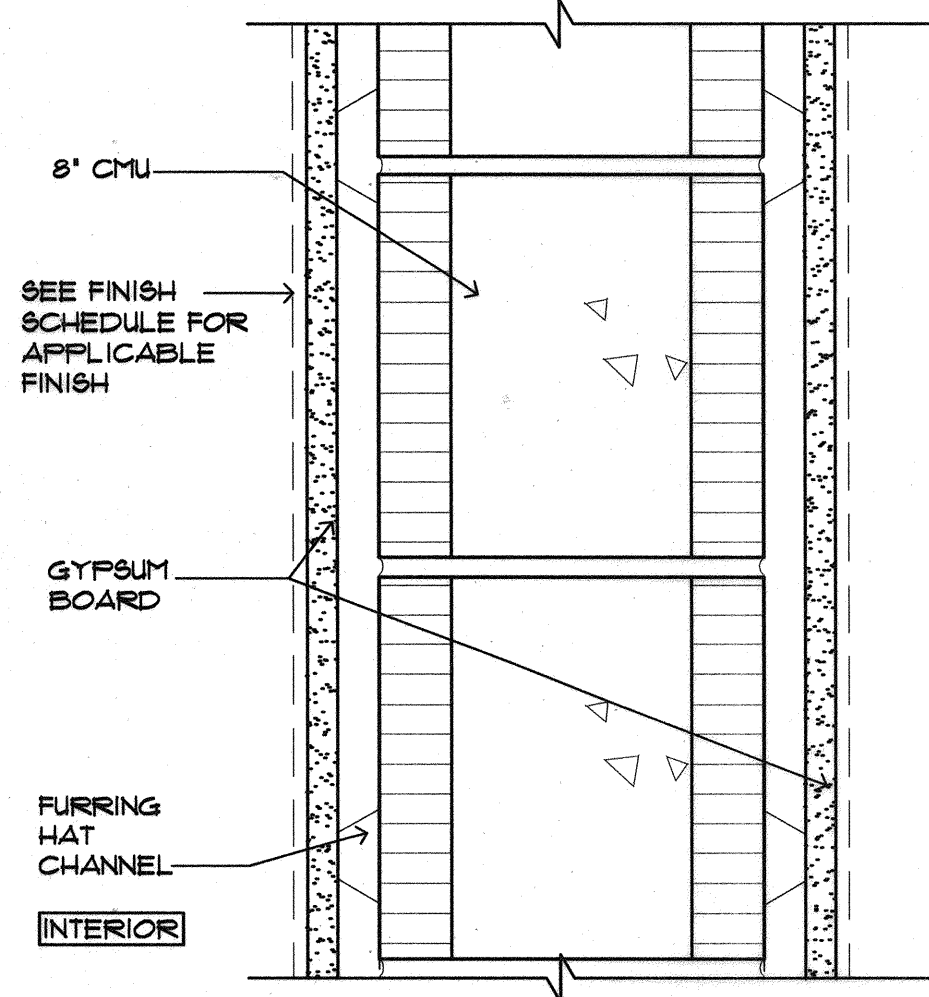
M-1 R=20
M-1A 2 HR FIRE RATING UL-U925



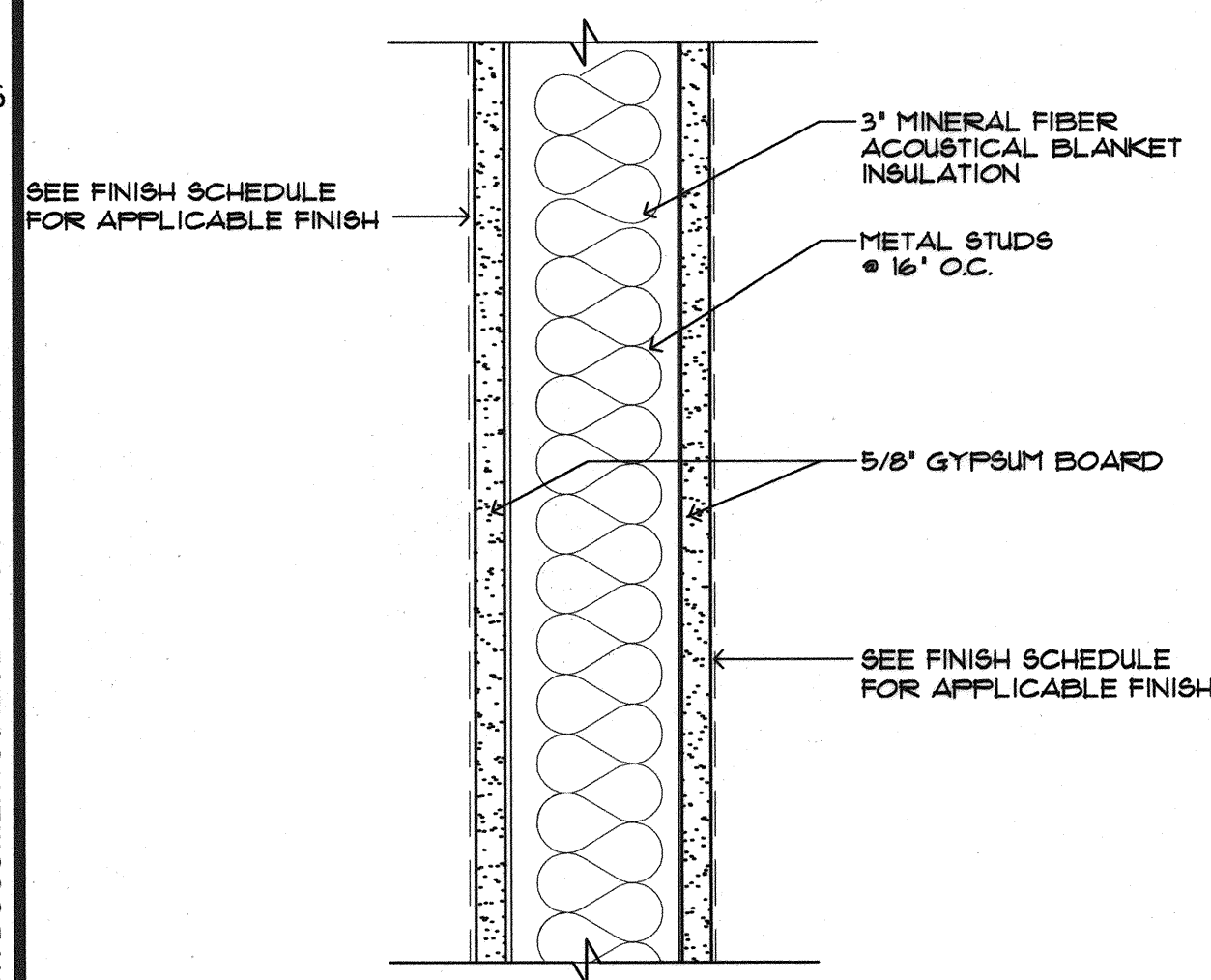
M-2



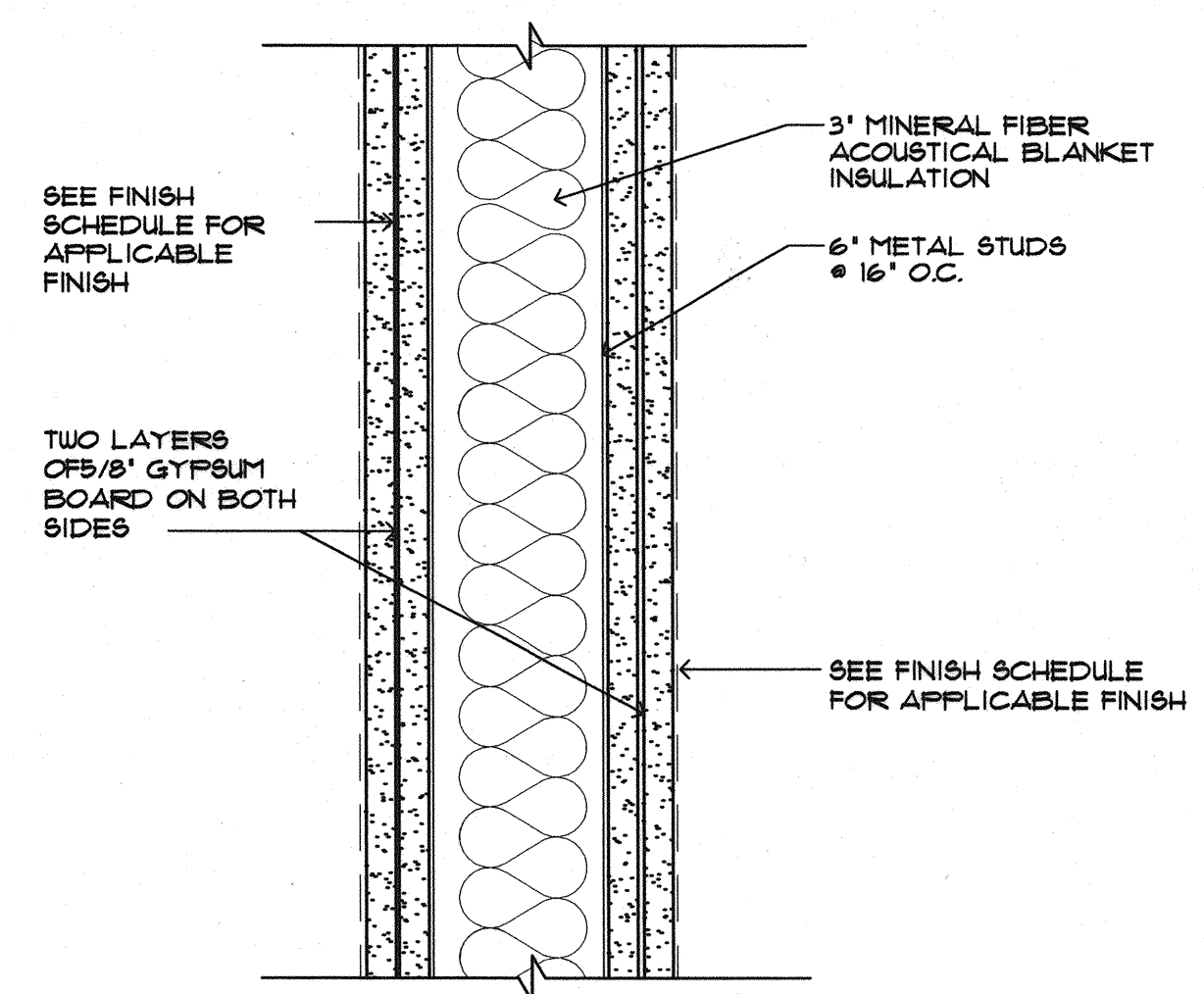
M-3
M-3A 2 HR FIRE RATING UL-U925



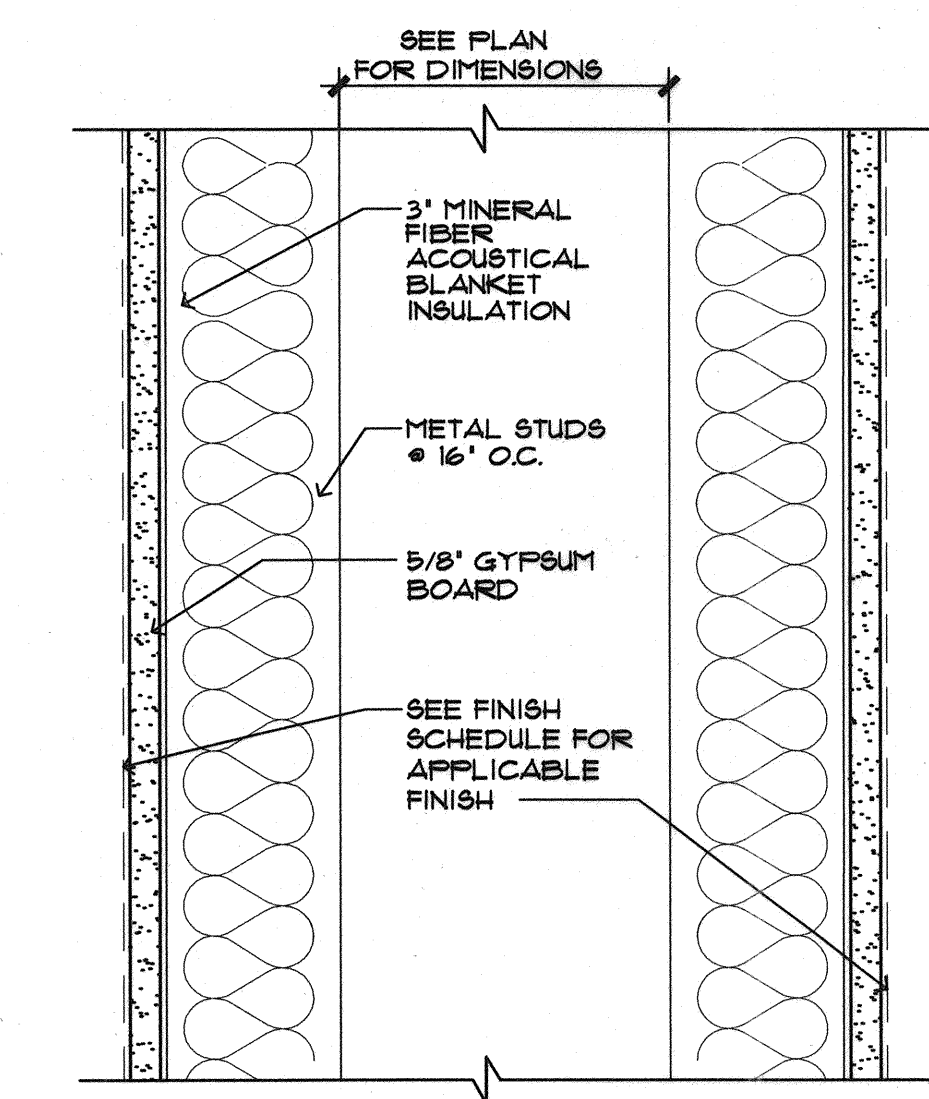
M-4 2 HR FIRE RATING UL-U925



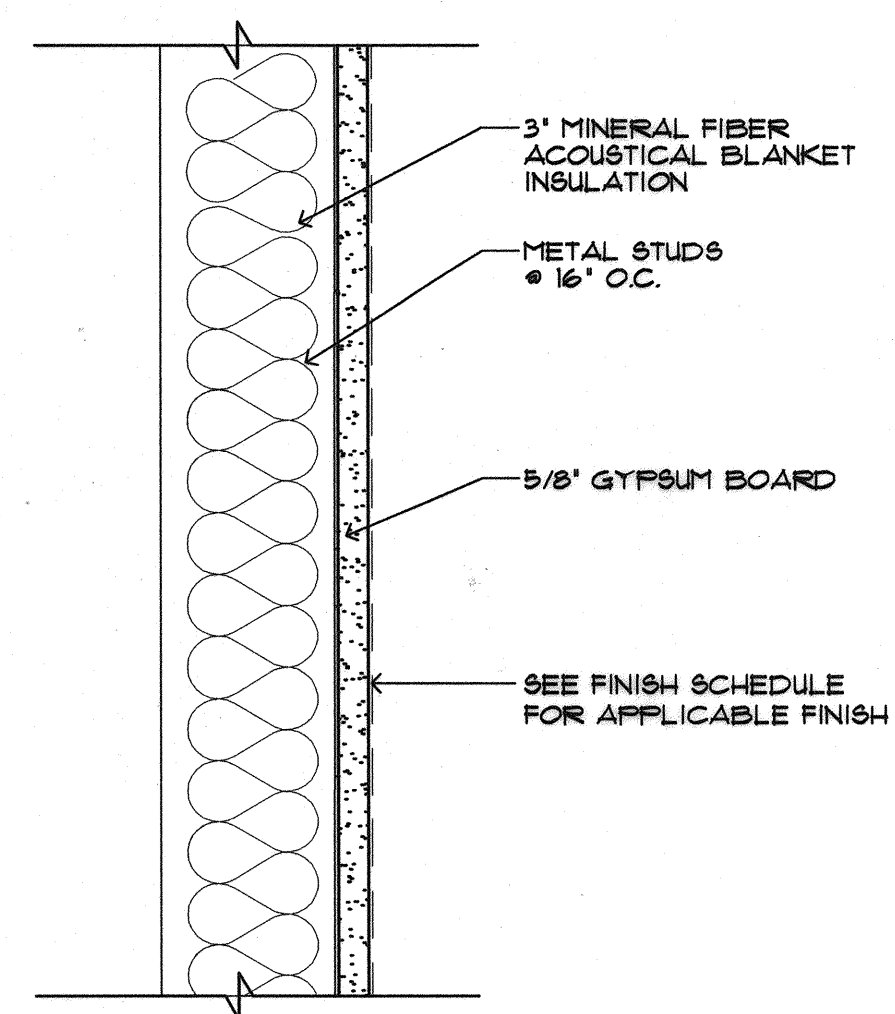
P-1



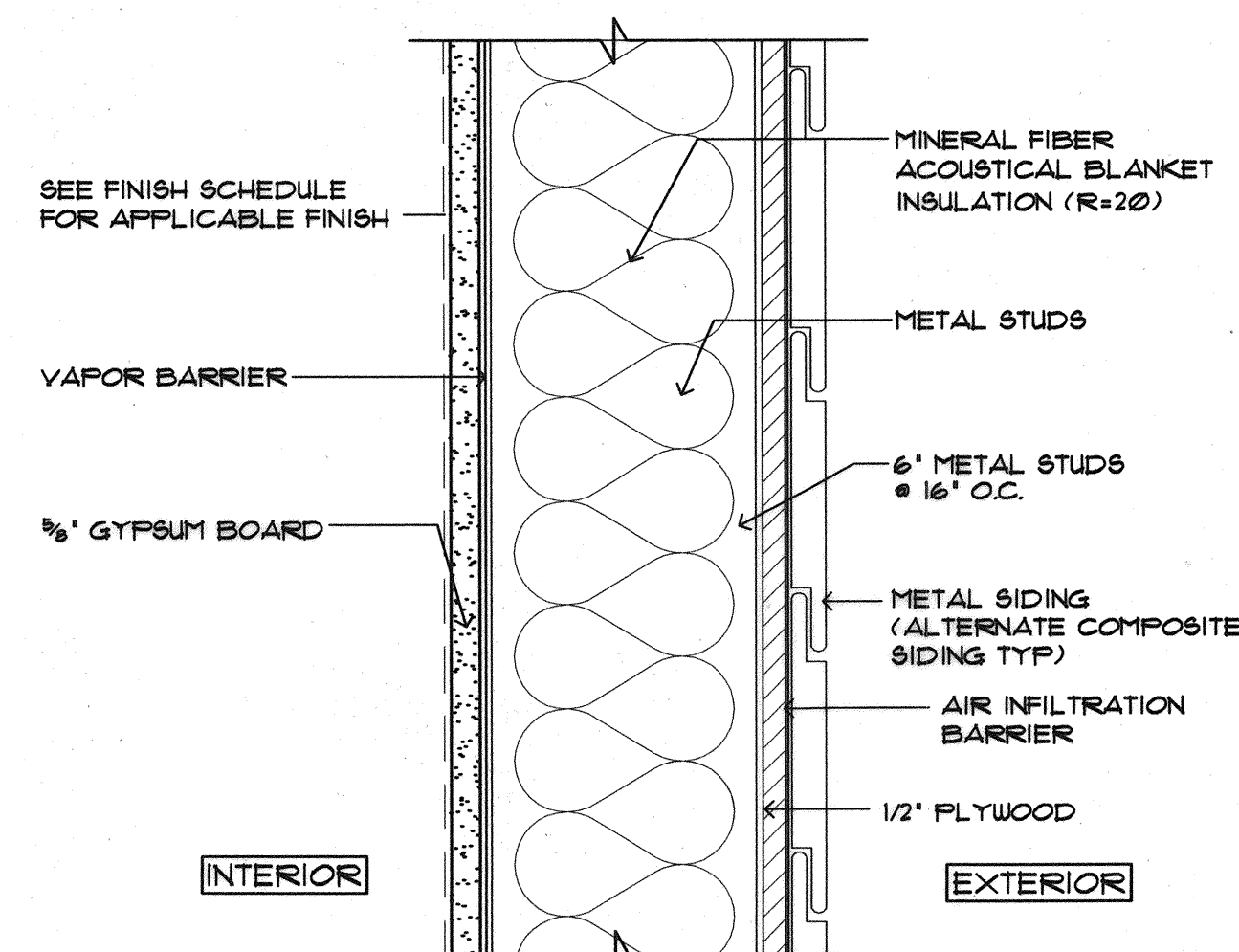
P-1-A 2 HR FIRE RATING UL-U419



P-2

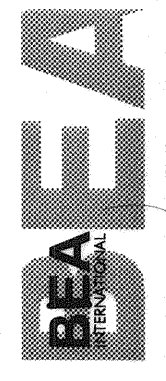


P-3

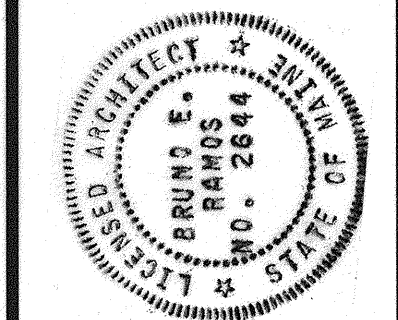


E-1 R=20

IN ASSOCIATION WITH:
 BEA CONSULTING ENGINEERS
 PERATROVICH, NOTTINGHAM & PRACE
 WINTON SCOTT ARCHITECTS
 HALEY & ALDRICH



STATE OF MAINE
 DEPARTMENT OF TRANSPORTATION
 PROJECT NUMBER 009215.00



PROJ. MANAGER	PAUL POTTLE
DESIGN-DETAILED	
CHECKED-REVIEWED	
DESIGN-2-DETAILED	
DESIGN-3-DETAILED	
REVISIONS 1	
REVISIONS 2	
REVISIONS 3	
REVISIONS 4	
FIELD CHANGES	

SIGNATURE: [Signature]
 DATE: 10/8/2004
 P. LICENSE NUMBER: ARC 2644

CITY OF PORTLAND
 OCEAN GATEWAY PHASE 1
 WALL ASSEMBLIES

A605-R