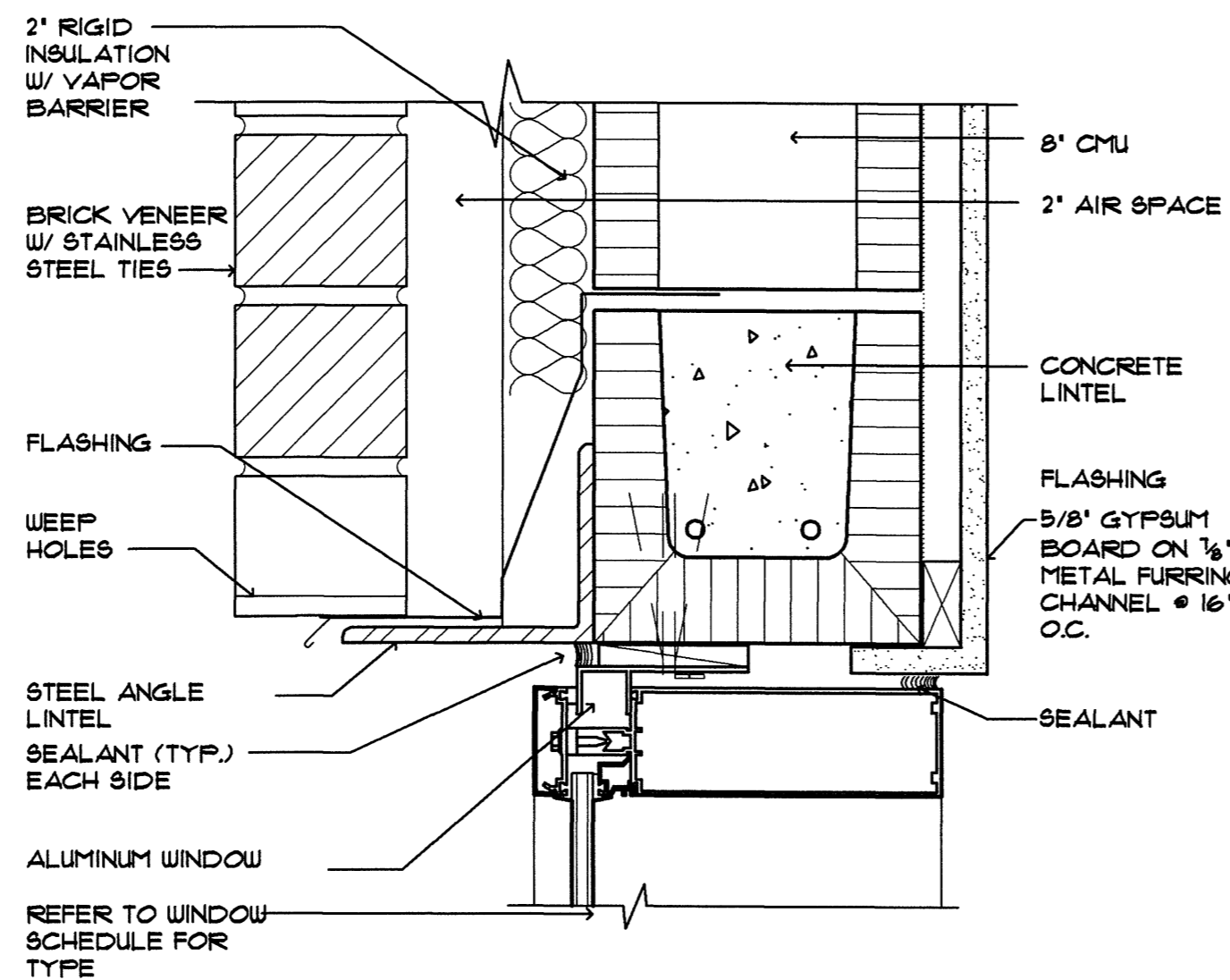


WINDOW HEAD DETAIL

SCALE: 3' = 1'-0"

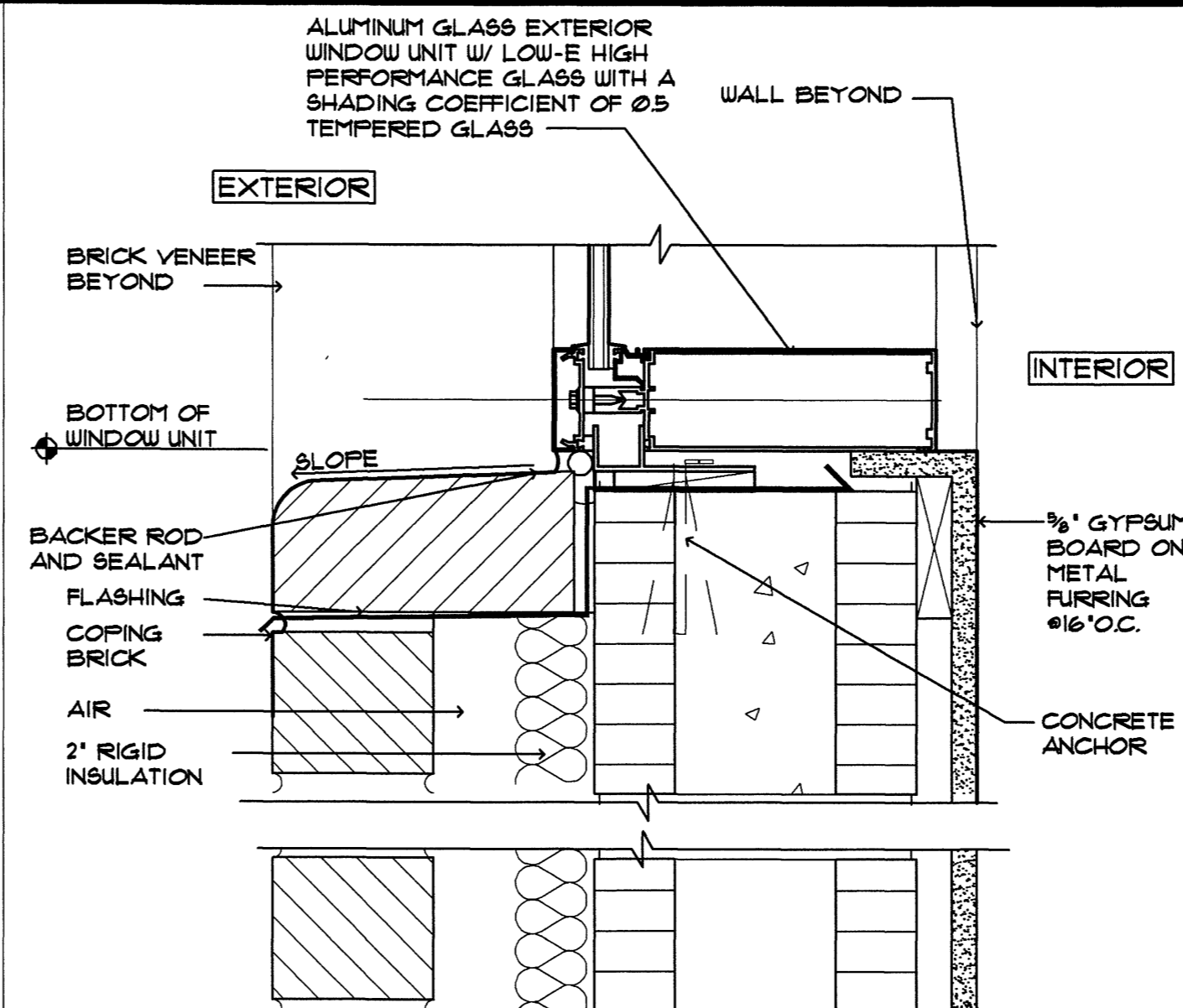
1
A604R



WINDOW DETAIL

SCALE: 3' = 1'-0"

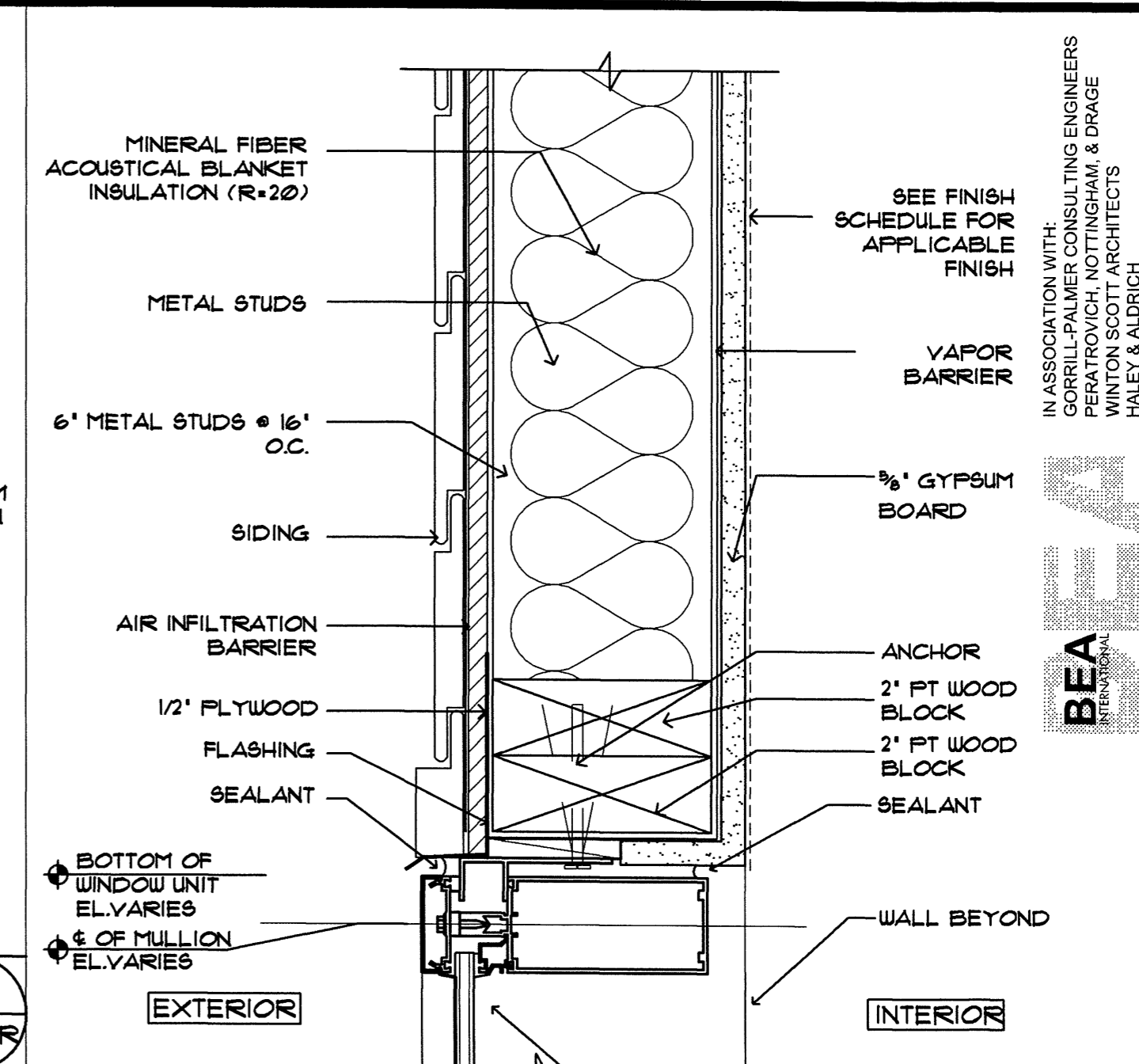
2
A604R



DOOR JAMB DETAIL

SCALE: 3' = 1'-0"

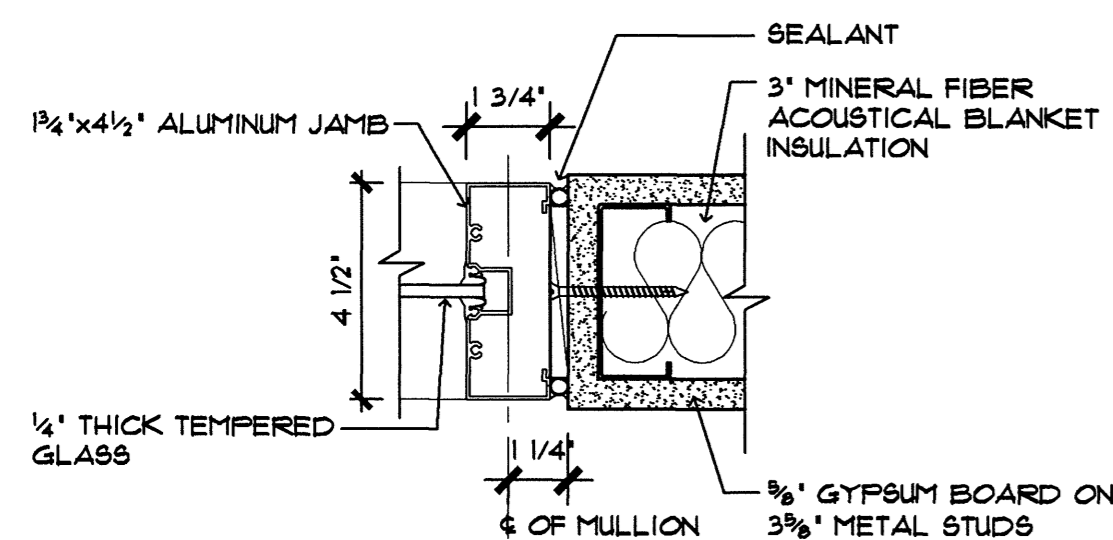
3
A604R



WINDOW DETAIL

SCALE: 3' = 1'-0"

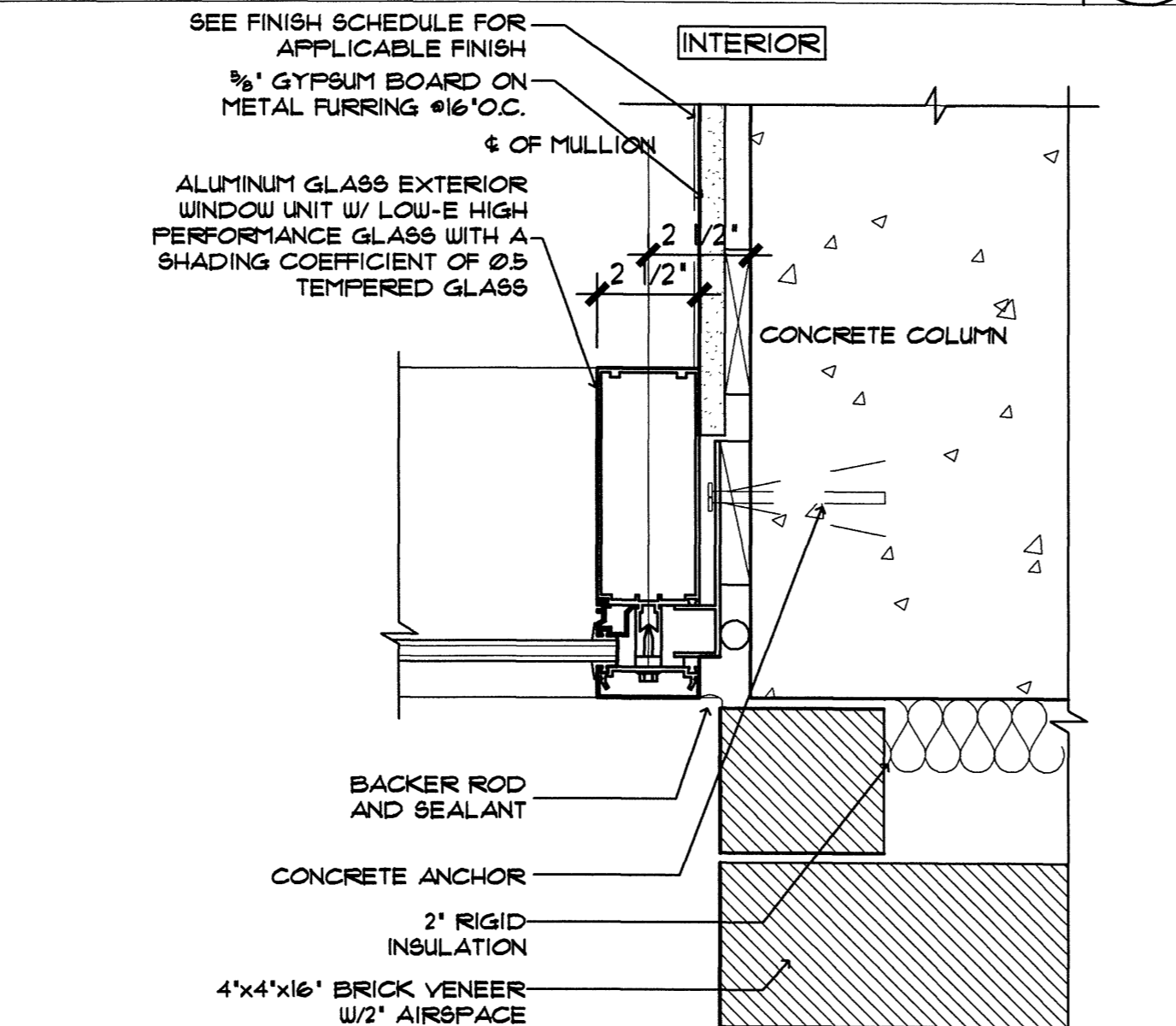
4
A604R



WINDOW JAMB DETAIL

SCALE: 3' = 1'-0"

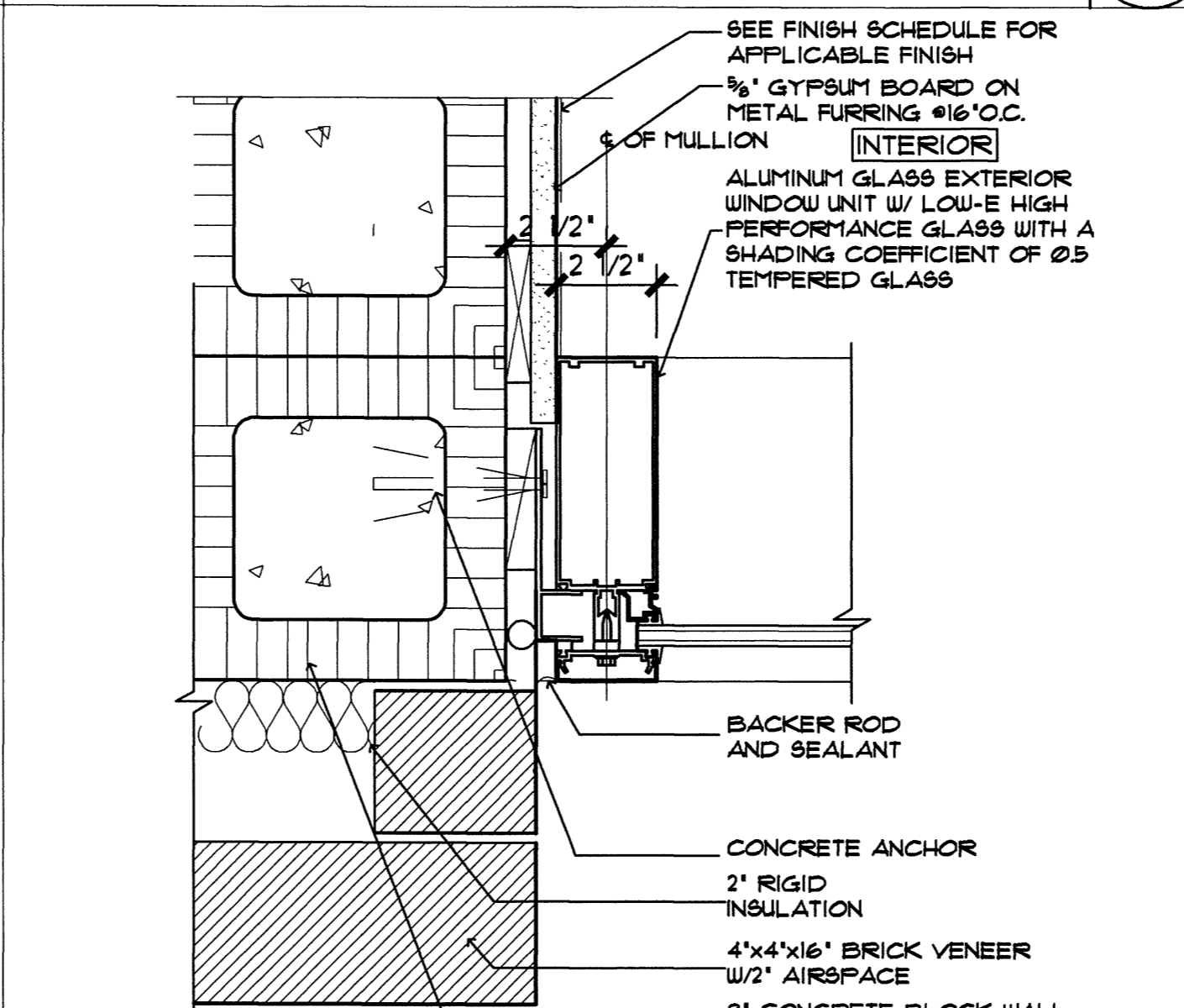
5
A604R



WINDOW DETAIL

SCALE: 3' = 1'-0"

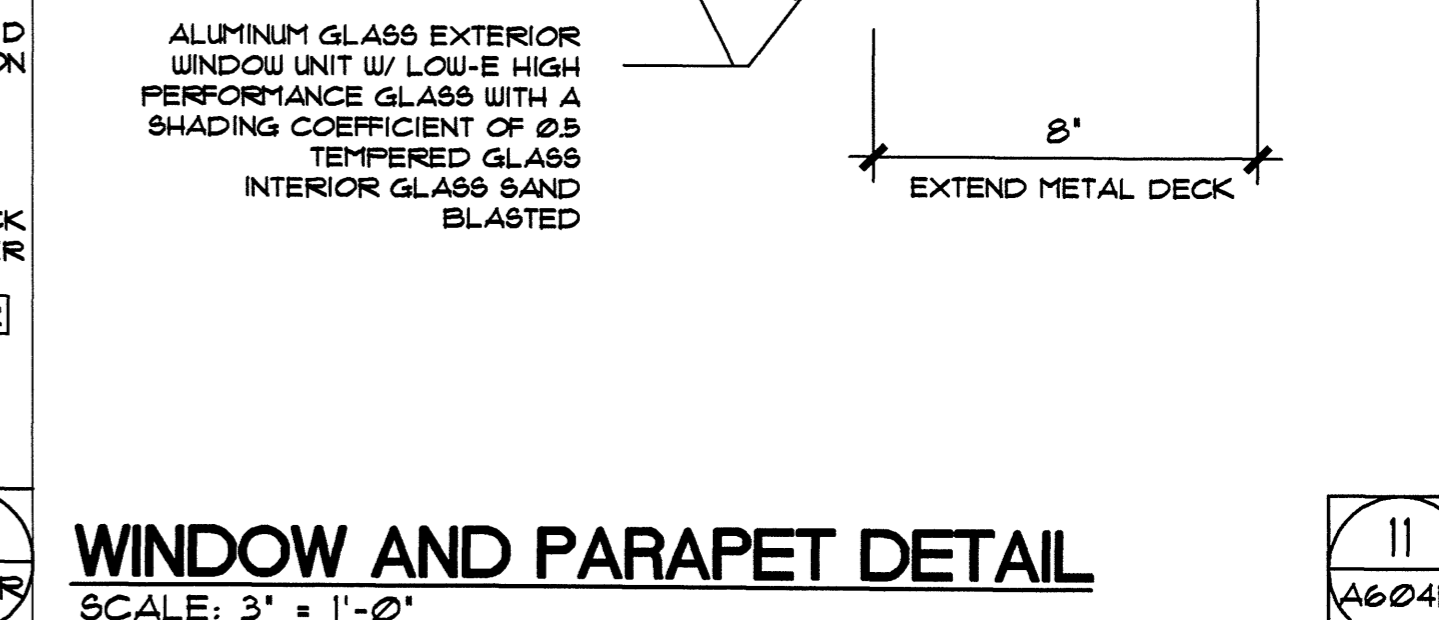
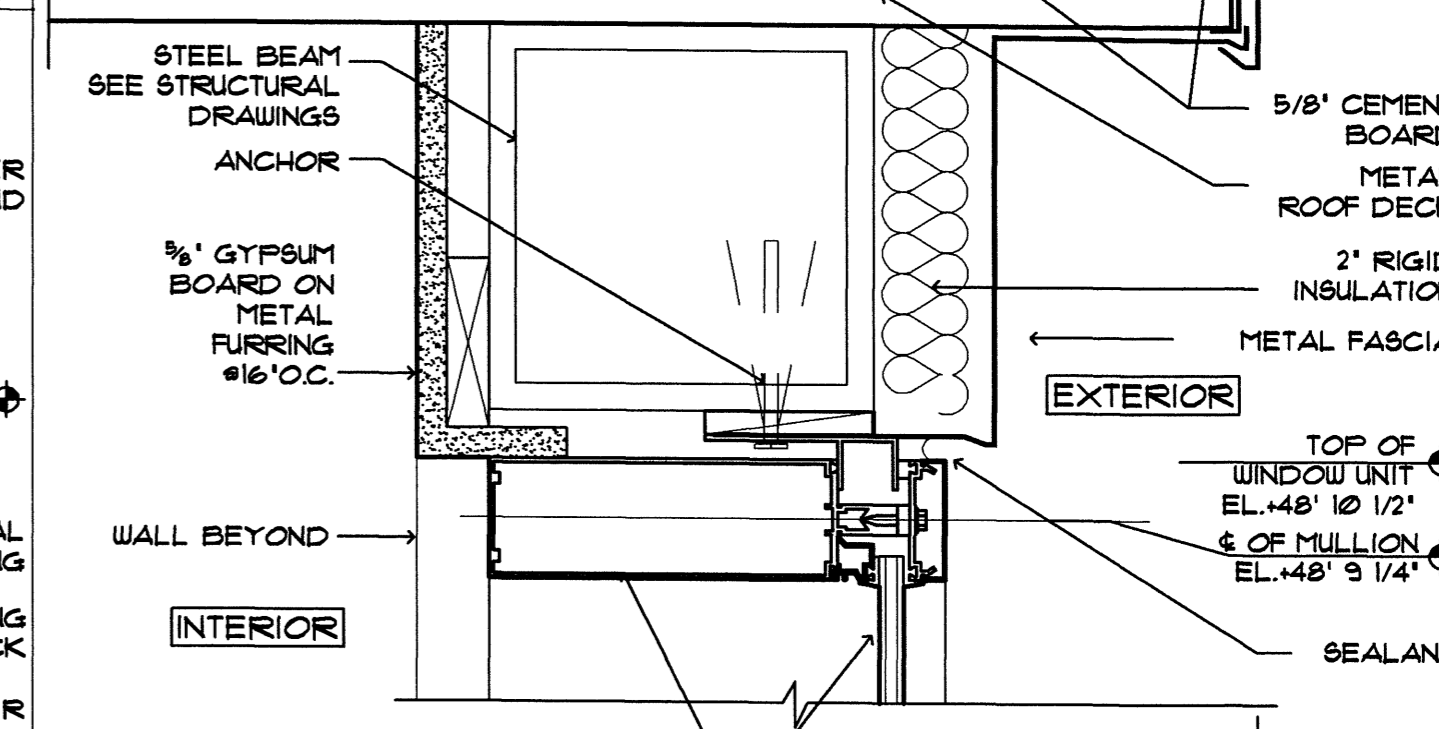
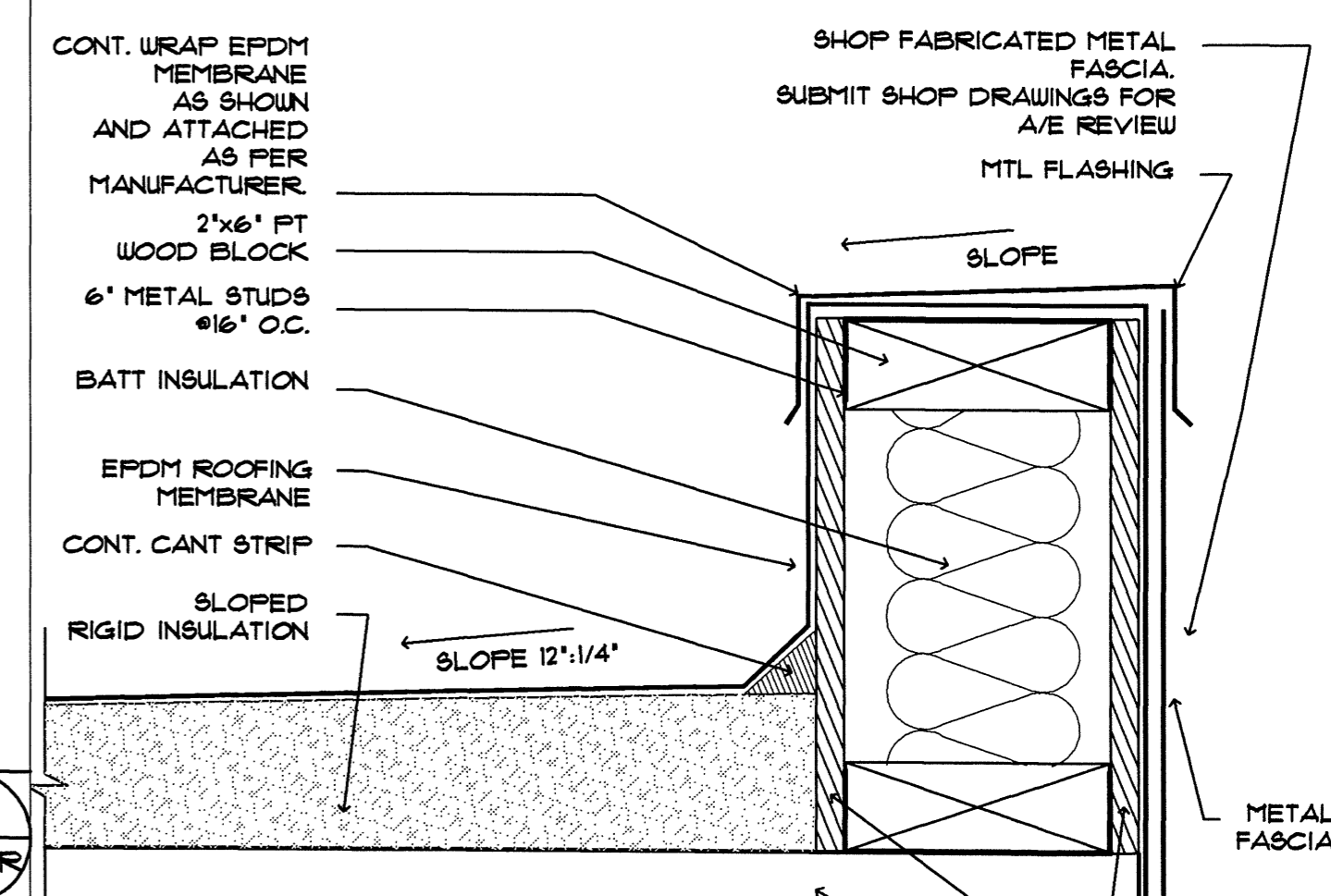
6
A604R



WINDOW DETAIL

SCALE: 3' = 1'-0"

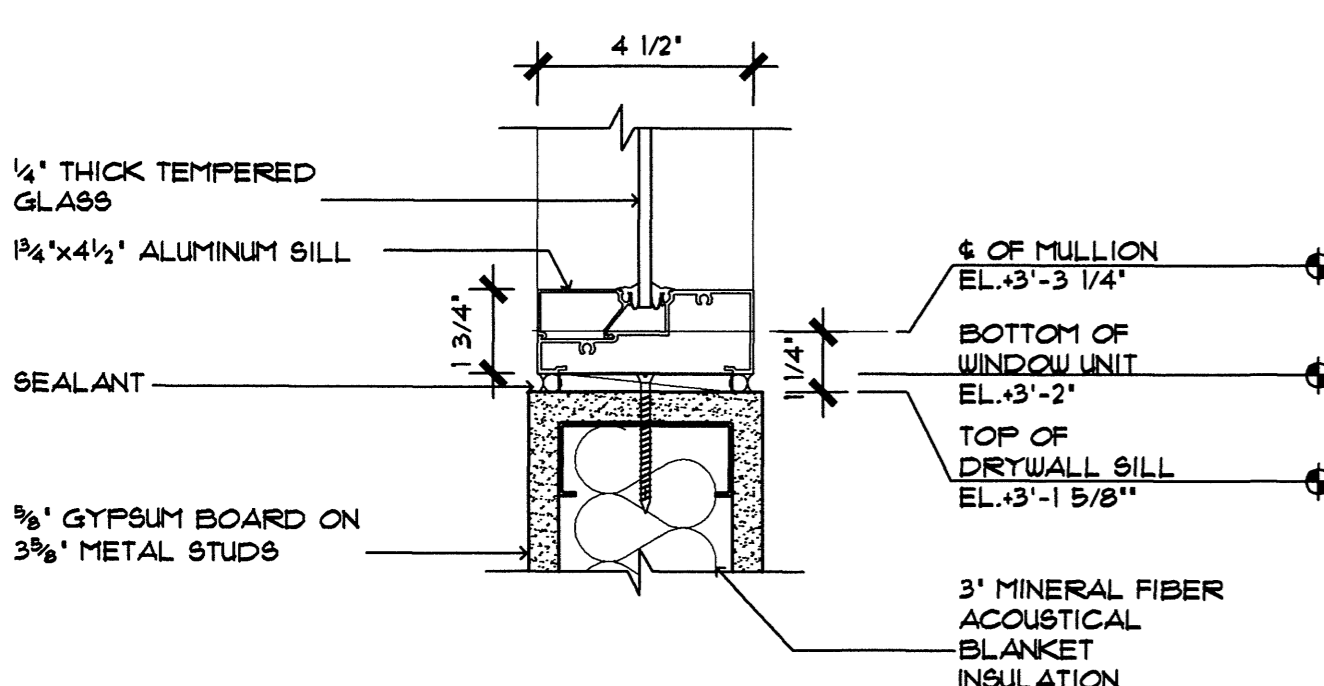
7
A604R



WINDOW AND PARAPET DETAIL

SCALE: 3' = 1'-0"

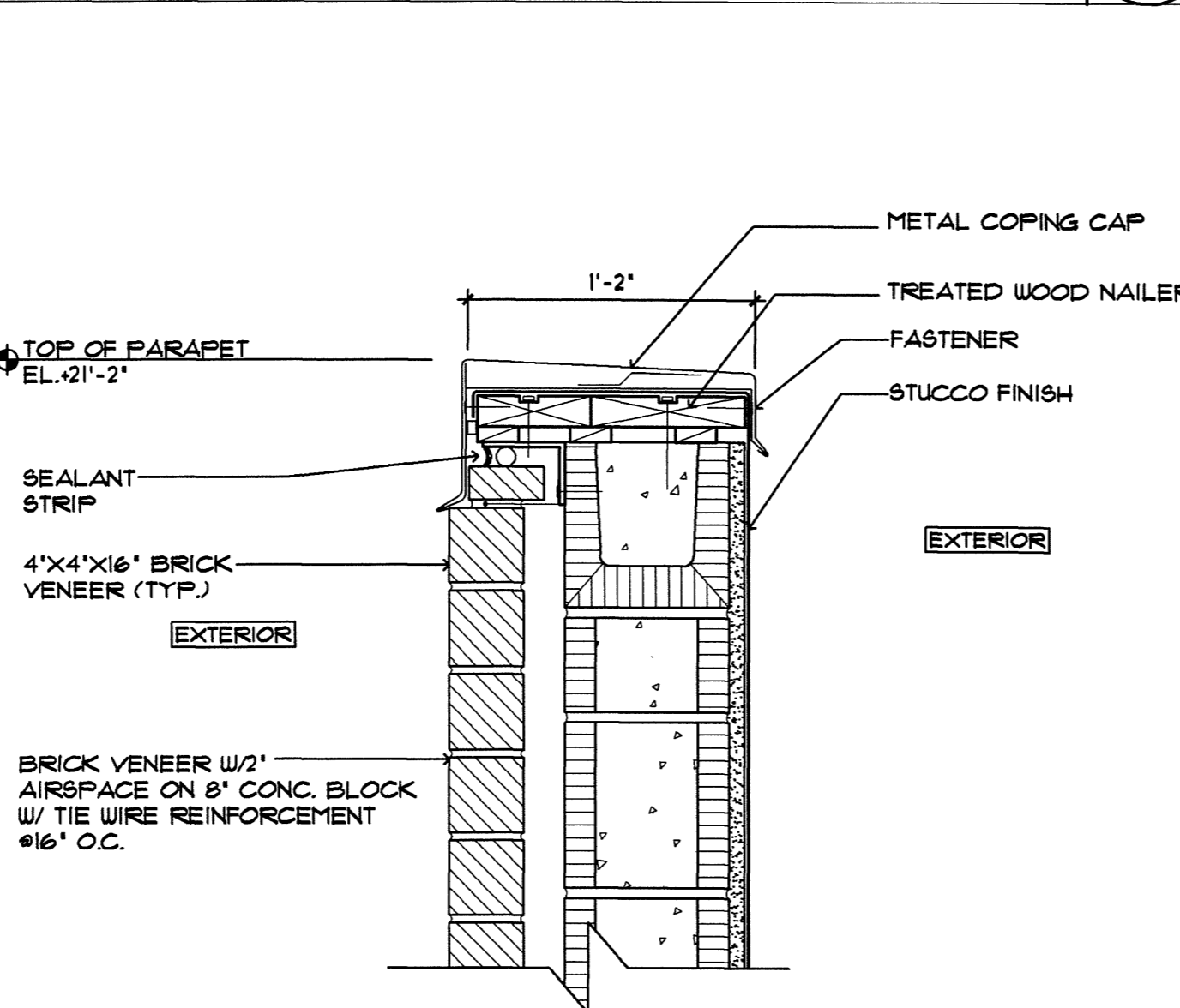
11
A604R



WINDOW SILL DETAIL

SCALE: 3' = 1'-0"

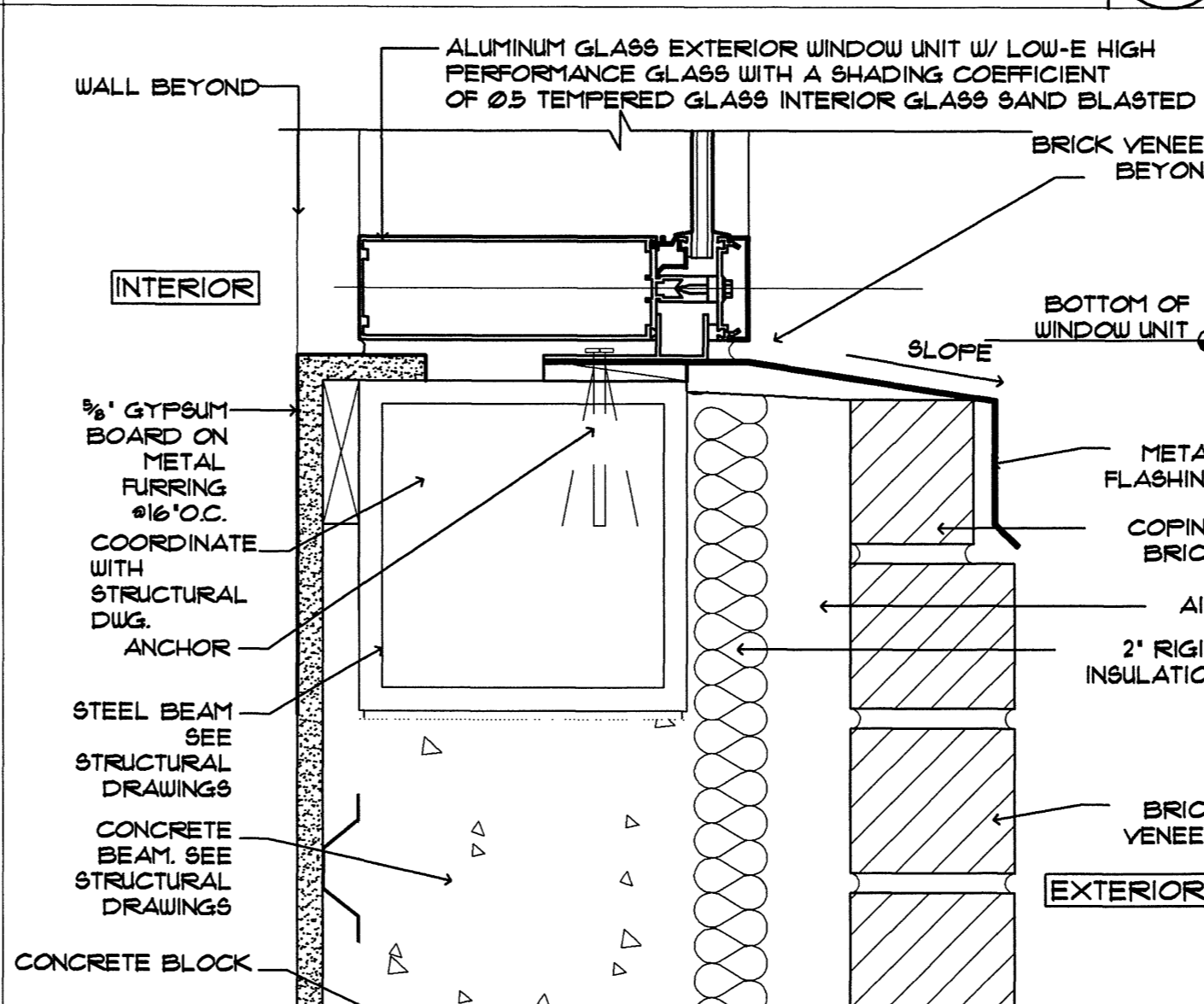
8
A604R



ROOF COPING DETAIL

SCALE: 1-1/2' = 1'-0"

9
A604R



DOOR JAMB DETAIL

SCALE: 3' = 1'-0"

10
A604R

STATE OF MAINE
DEPARTMENT OF TRANSPORTATION
PROJECT NUMBER 009215.00
PIN 009215.00

IN ASSOCIATION WITH:
GERRIT PALMER CONSULTING ENGINEERS
PERATROVICH, NOTTINGHAM & DRAGE
WINTON SCOTT ARCHITECTS
HALEY & ALDRICH

BEA
BENTLEY ENGINEERING ARCHITECTS

STATE OF MAINE
REGISTERED PROFESSIONAL ENGINEER
NO. 10000
PAUL POTTE
DATE: 10/8/2004

PROJ. MANAGER	PAUL POTTE	DATE	
DESIGN-REVIEWED		BY	
DESIGN-DETAILED		DATE	
DESIGN-DETAILED		DATE	
REVISIONS 1		DETAILS CALLOUT	4/21/05
REVISIONS 2		P. LICENSE NUMBER	ARC 2044
REVISIONS 3		DATE	10/8/2004
REVISIONS 4		DATE	
FIELD CHANGES		DATE	

CITY OF PORTLAND
OCEAN GATEWAY PHASE 1
DETAILS

A604-R
201 OF 288