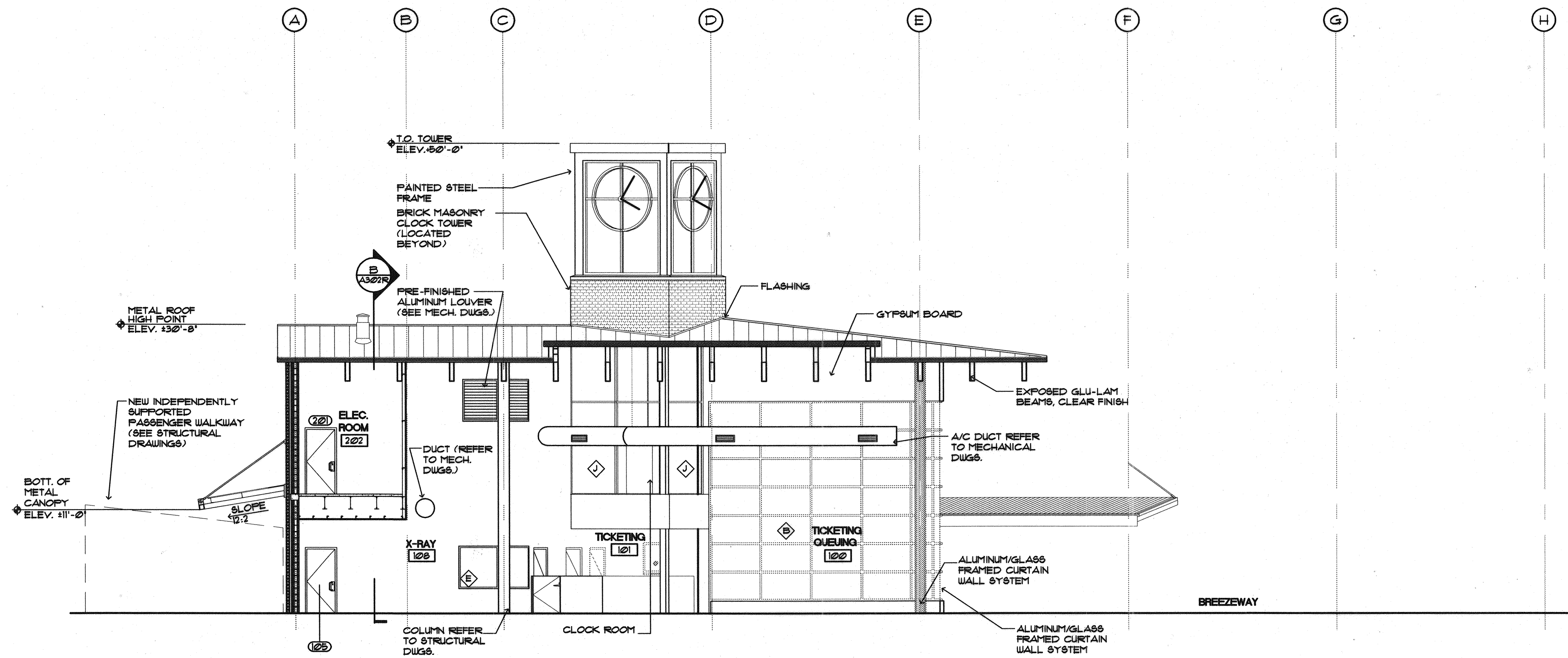
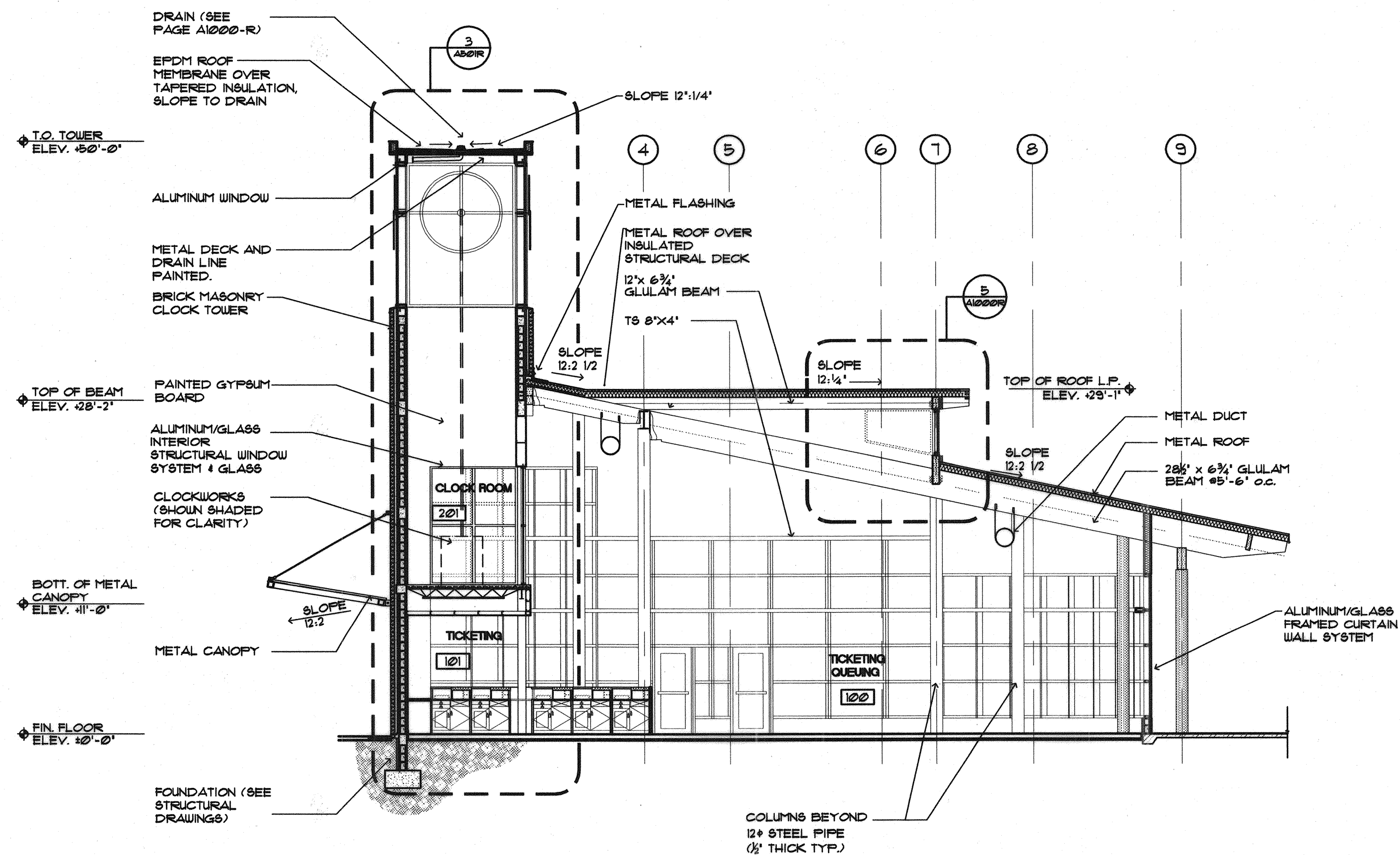


Filename: \\Server1\projects\02-0818 Maine Int. Ferry Terminal\PHASE 1\Architecture\FINAL CONSTRUCTION DOCUMENTS\RECEIVING STATION\20343802-R-A303.dwg, Oct 07, 2004 - 6:34pm



BUILDING SECTION C-C
SCALE: 1/8"=1'-0"



BUILDING SECTION D-D
SCALE: 1/8"=1'-0"

IN ASSOCIATION WITH:
BEA
GORRILL-PALMER CONSULTING ENGINEERS
PERATROVICH, NOTTINGHAM, & DRAGE
ARCHITECTS
HALEY & ALDRICH

STATE OF MAINE
DEPARTMENT OF TRANSPORTATION
PROJECT NUMBER 009215.00
PIN
009215.00



PROJ. MANAGER	PAUL POTTLE	DATE	
DESIGN-DETAILED		BY	
CHECKED-REVIEWED		DATE	
DESIGN-2-DETAILED2		SIGNATURE	
DESIGN-3-DETAILED3		P. LICENCE NUMBER	ARC 2644
REVISIONS 1		DATE	10/8/2004
REVISIONS 2		DATE	
REVISIONS 3		DATE	
REVISIONS 4		DATE	
FIELD CHANGES		DATE	

CITY OF PORTLAND
OCEAN GATEWAY PHASE 1
BUILDING SECTION