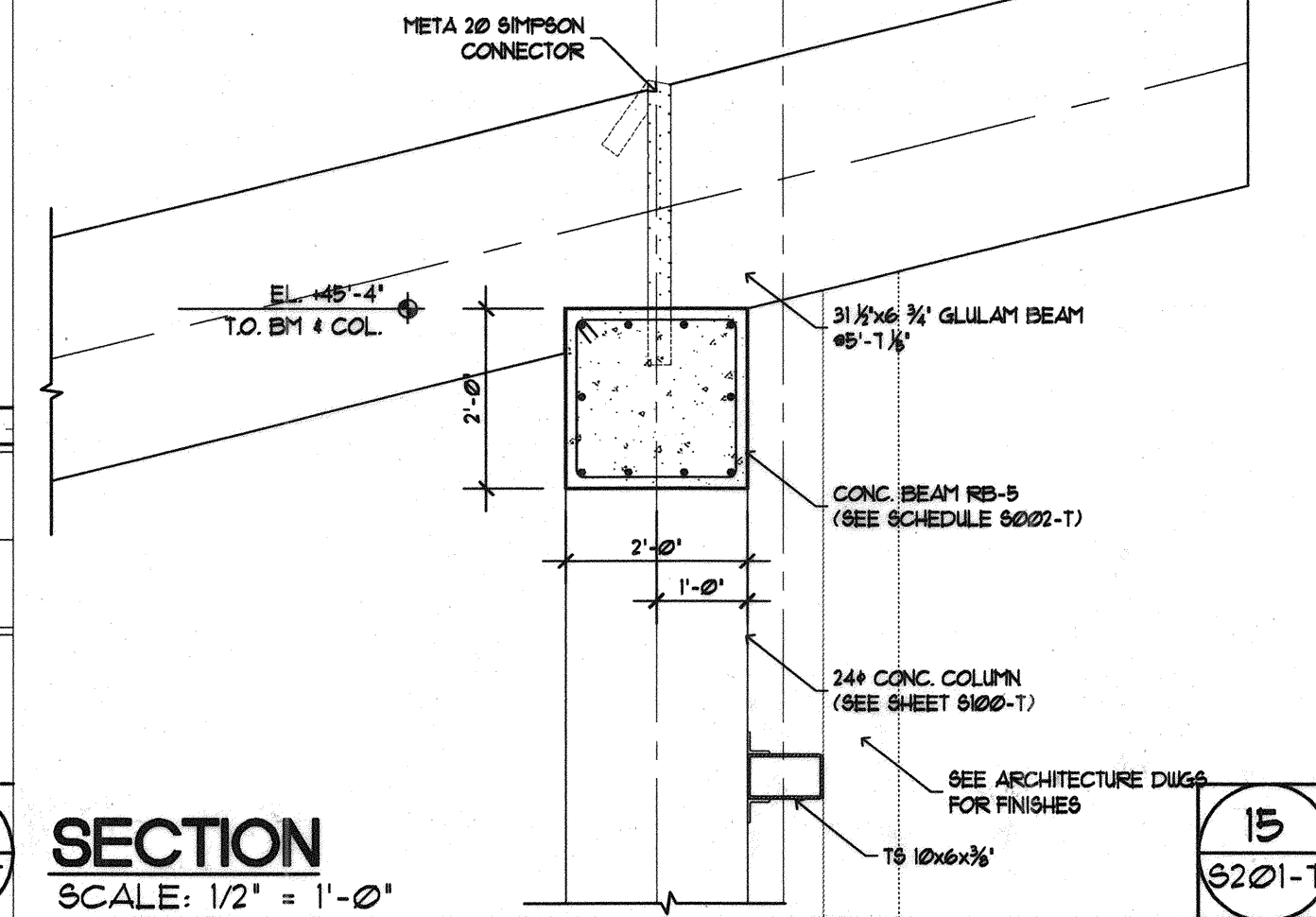
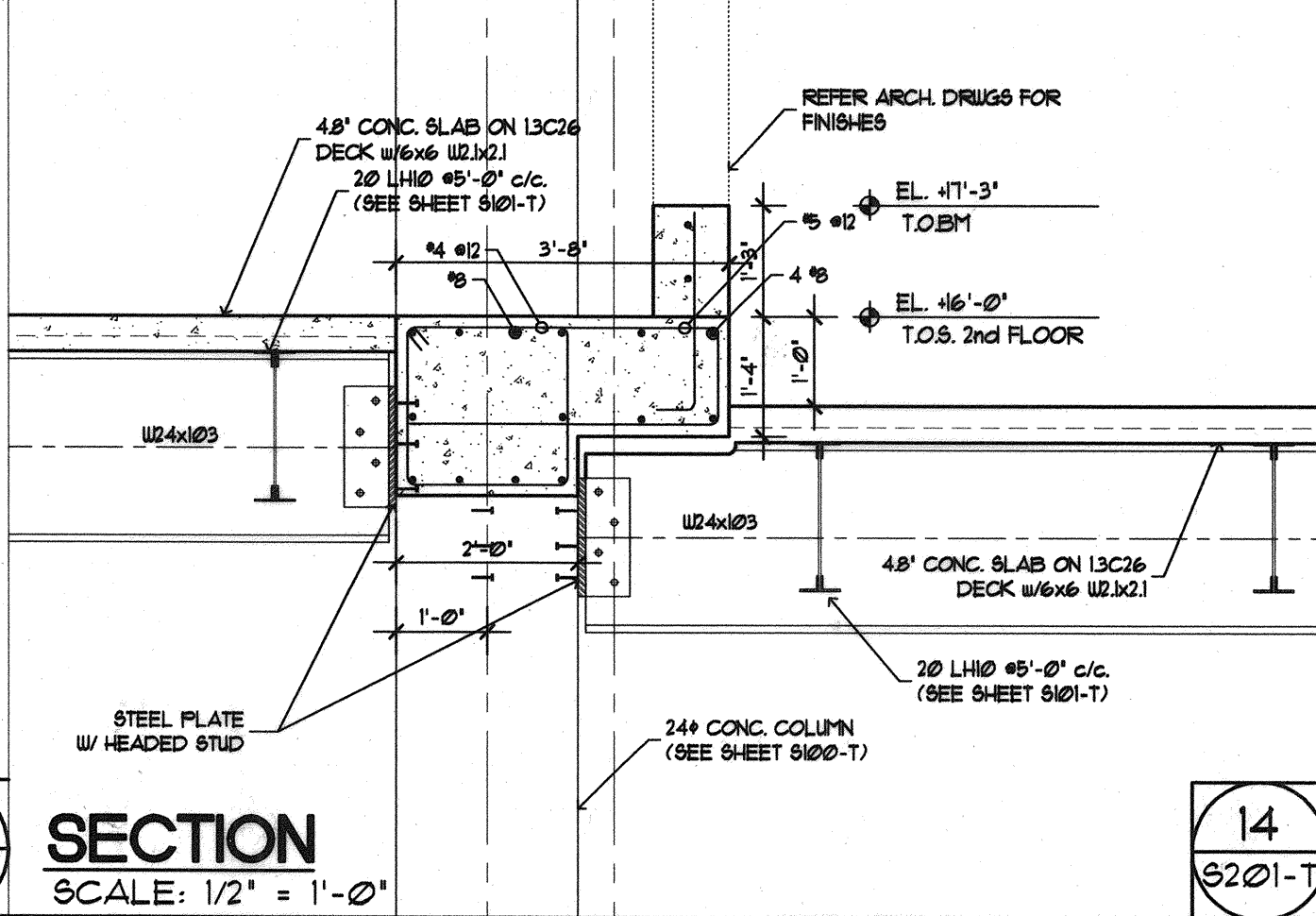
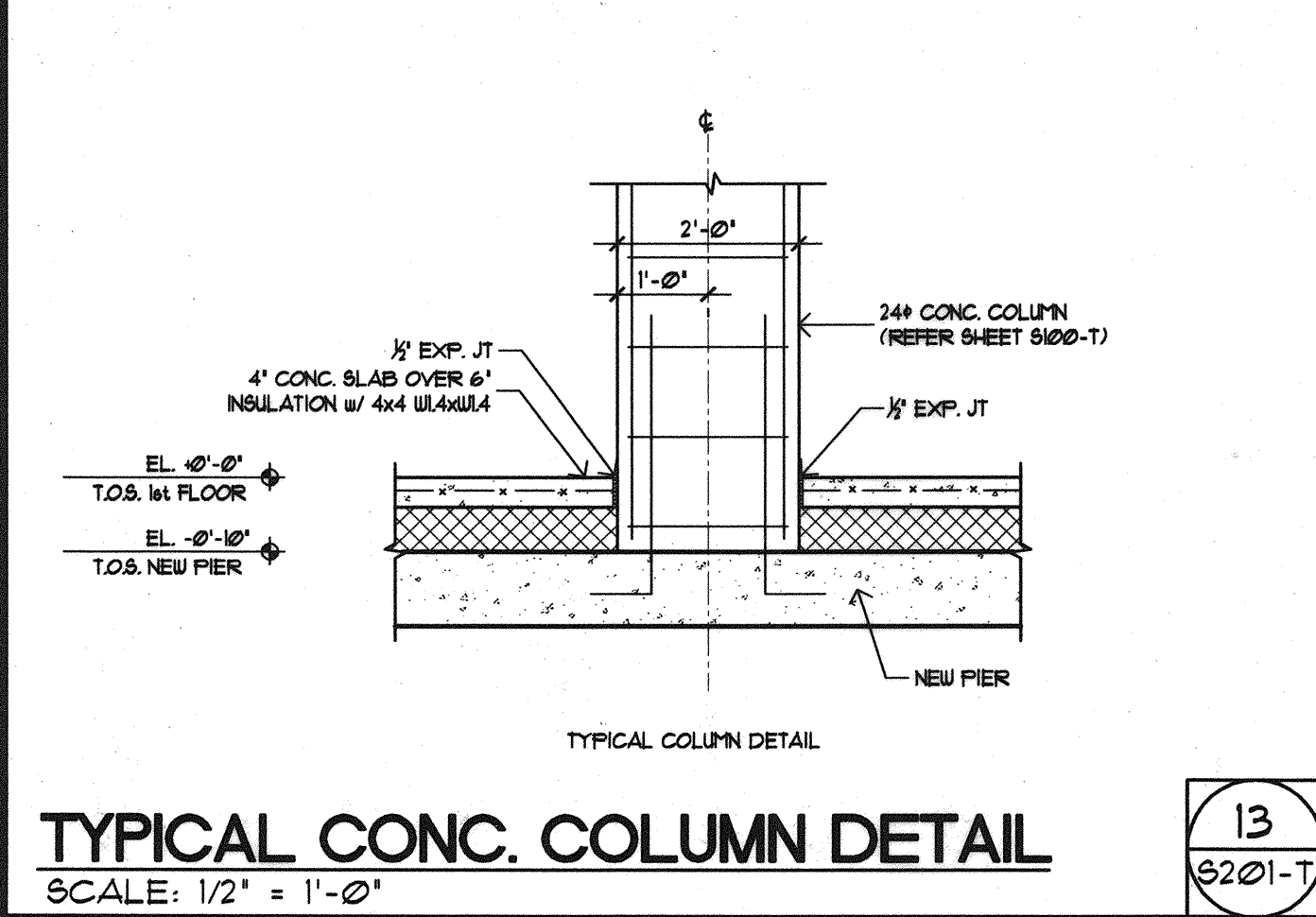
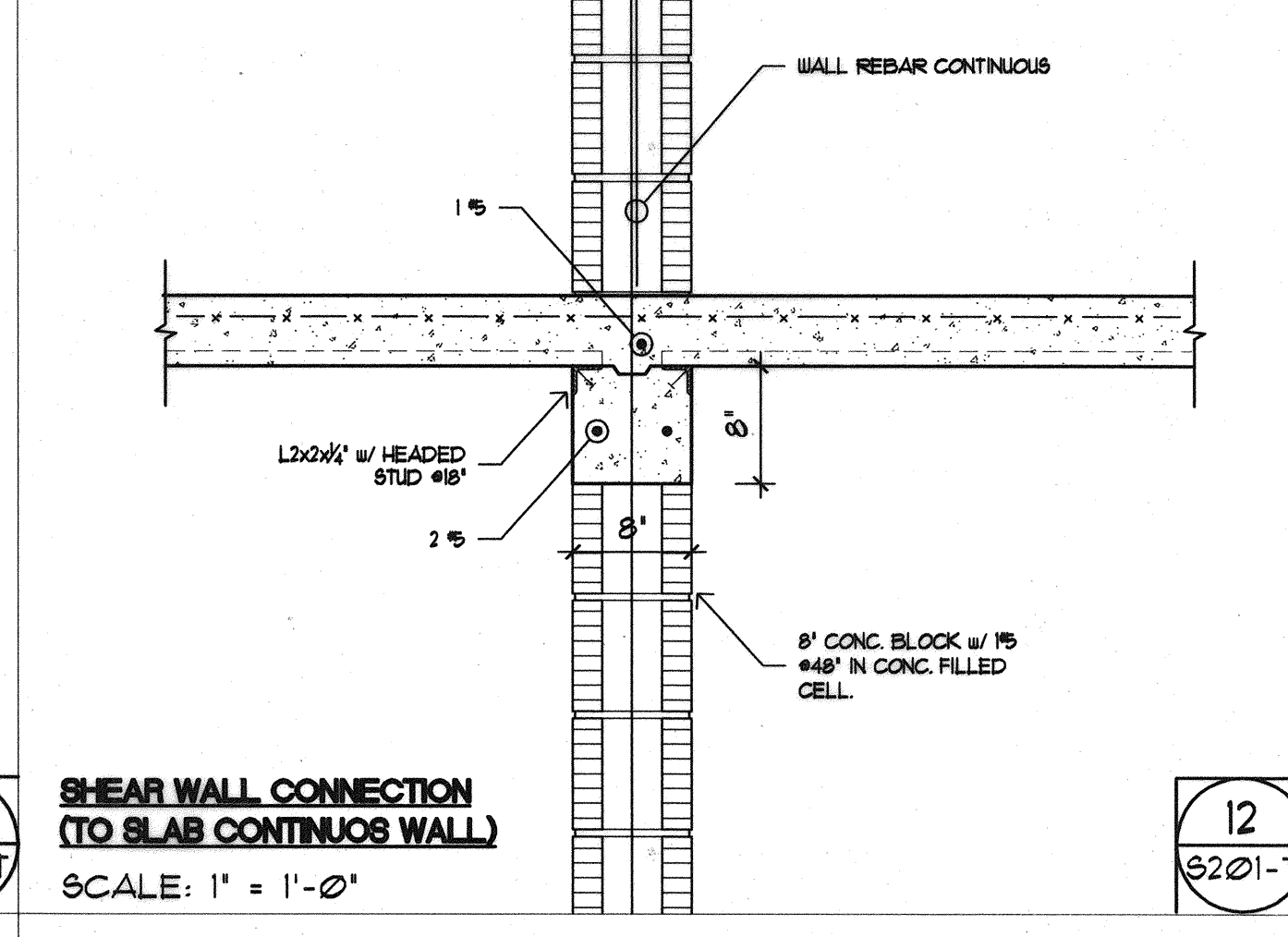
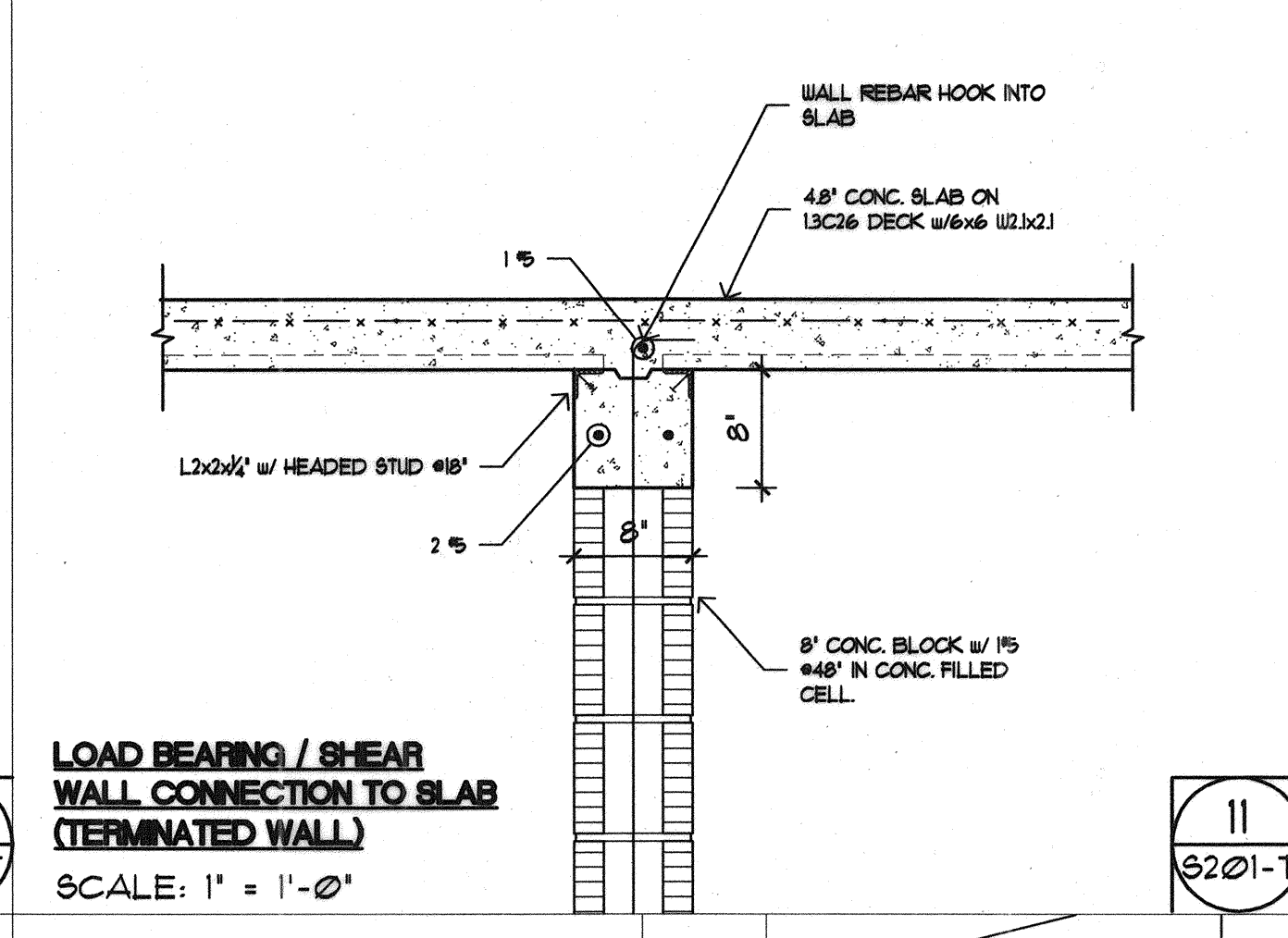
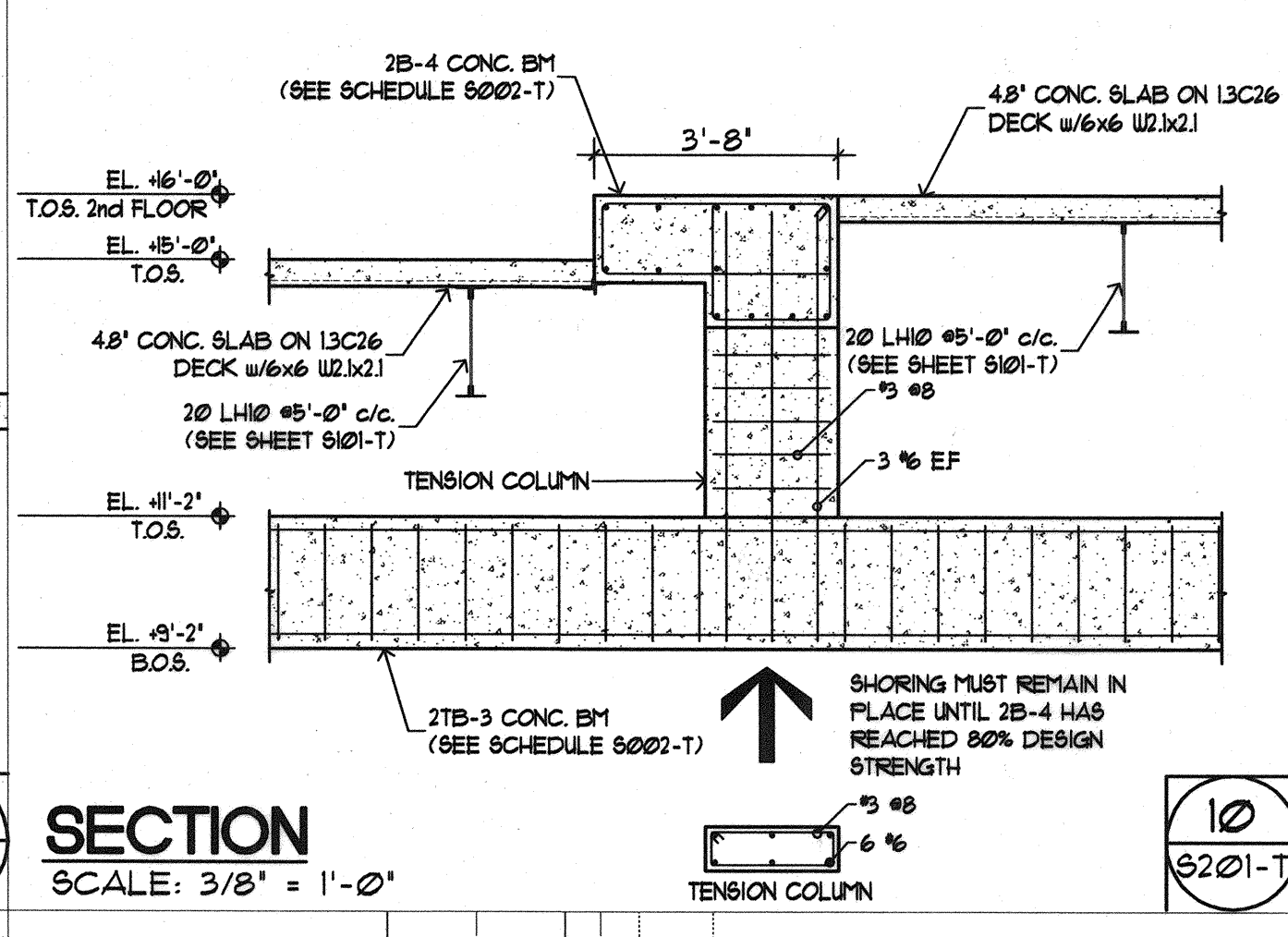
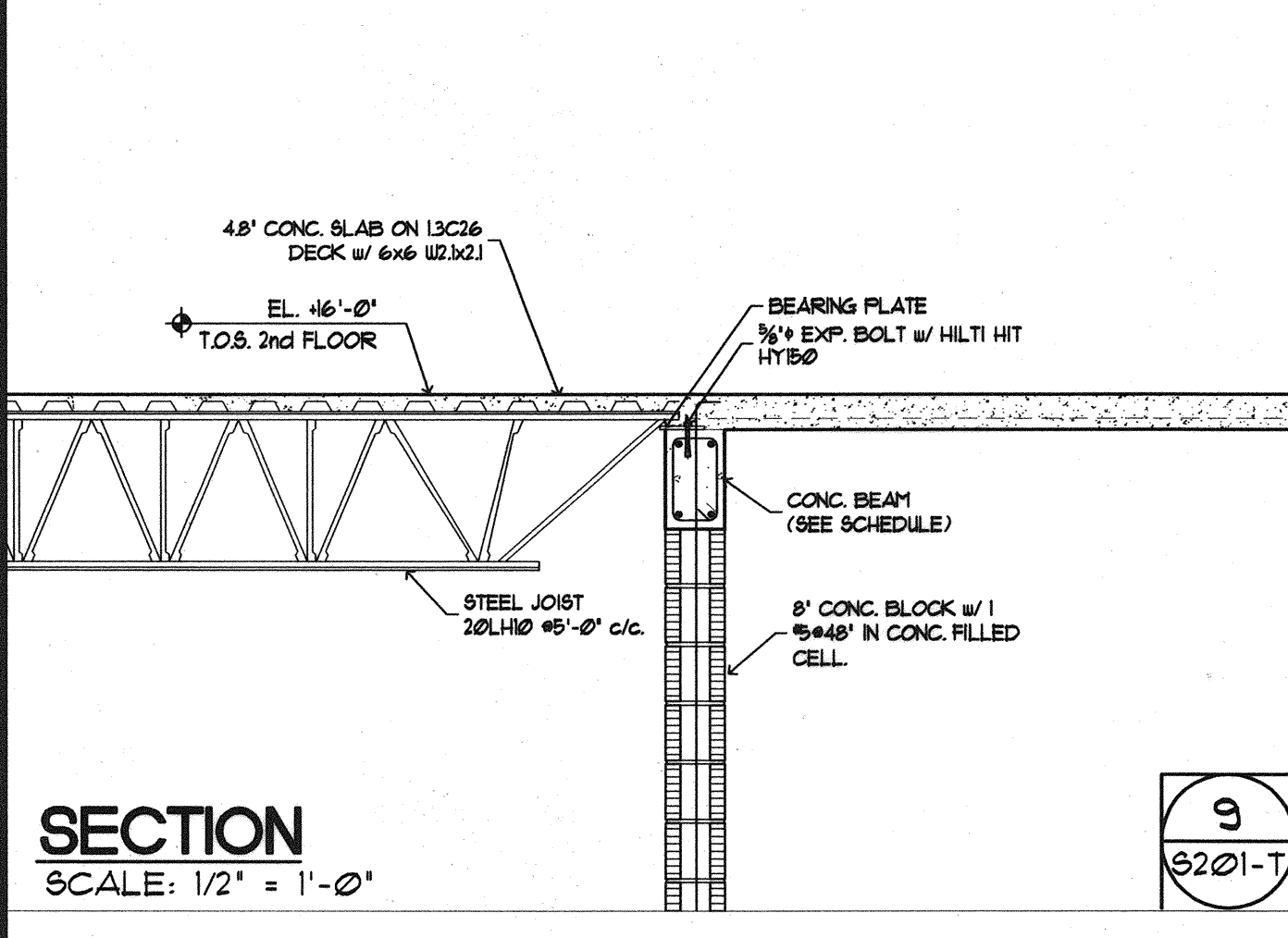
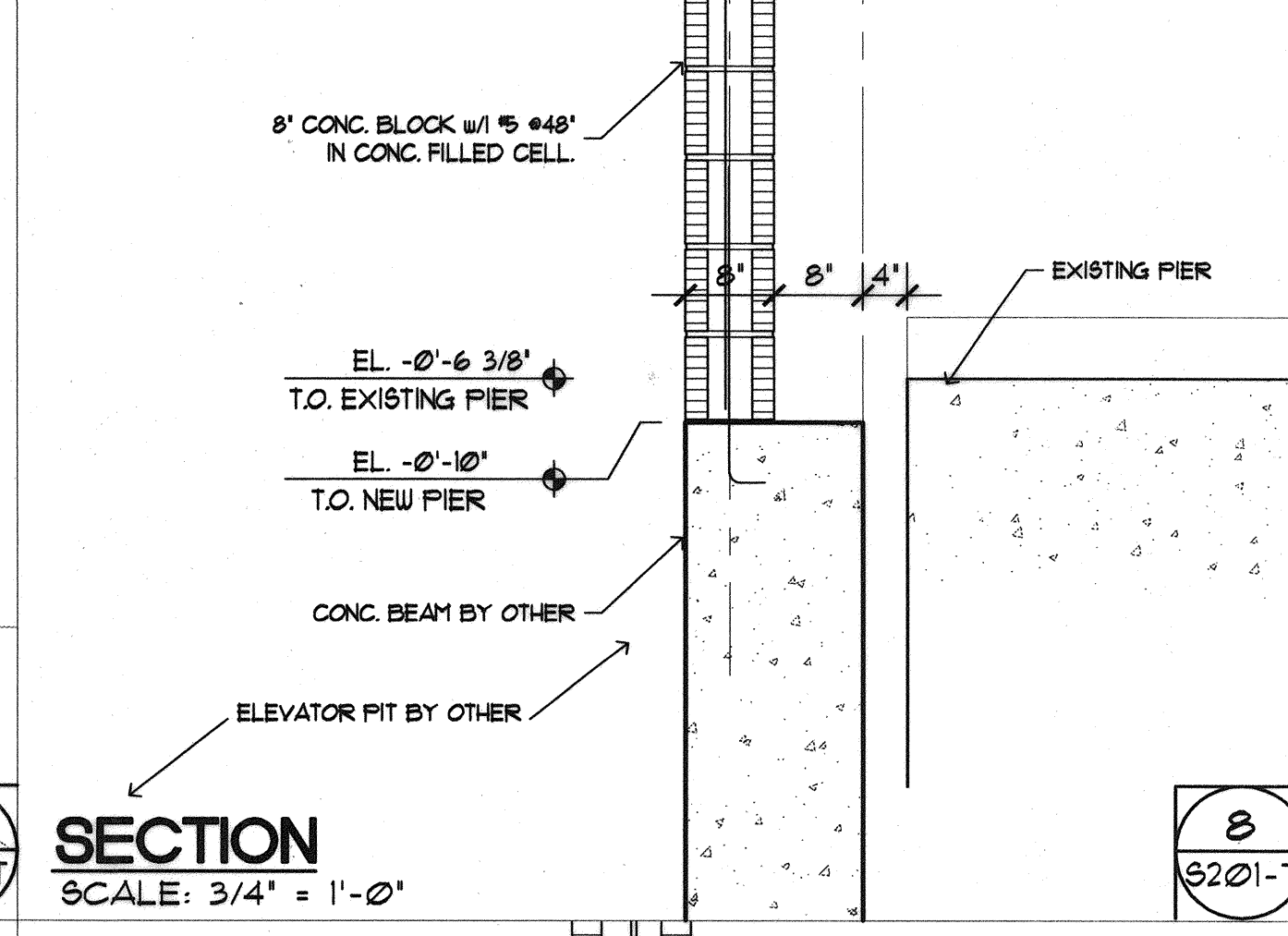
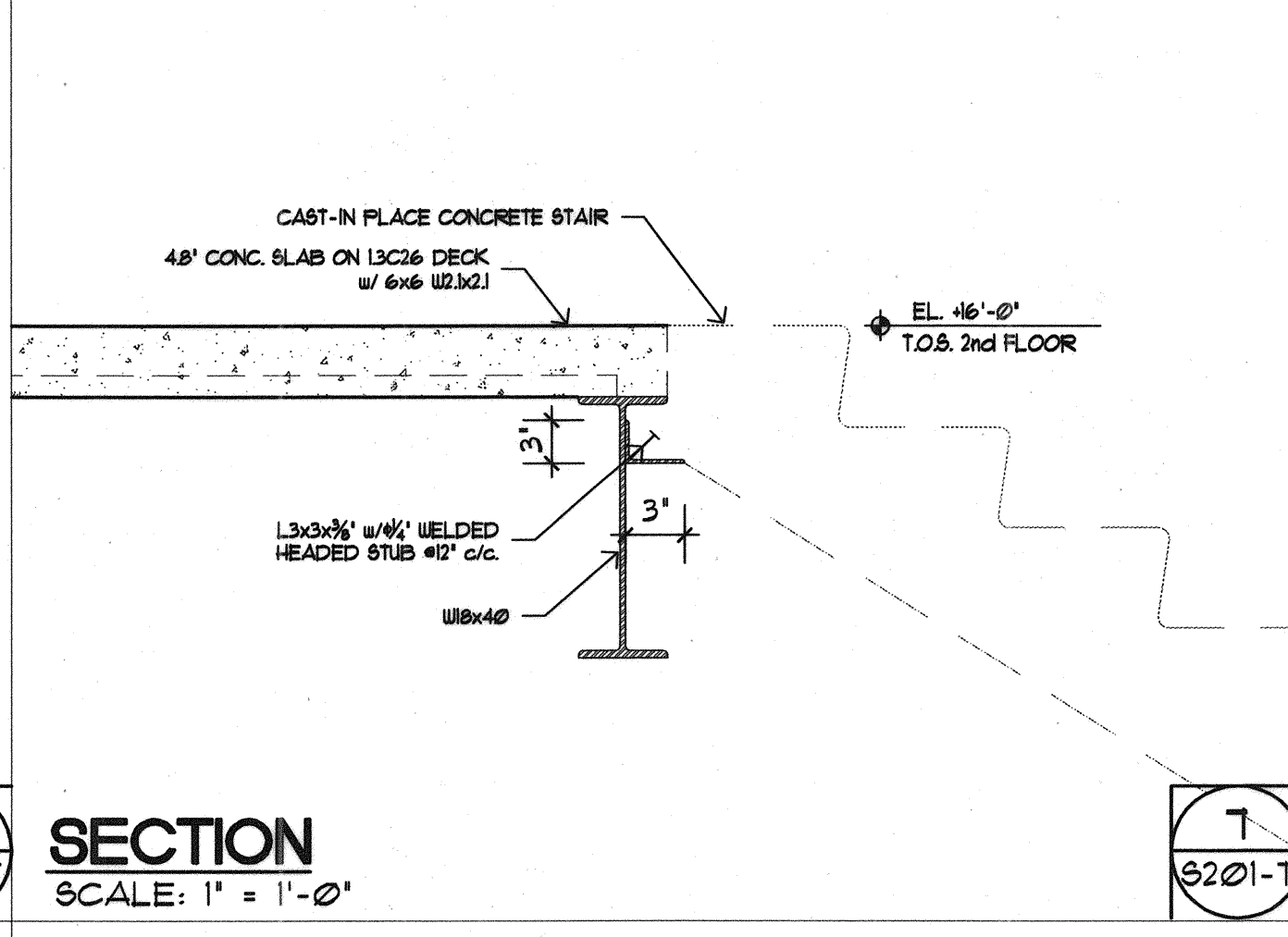
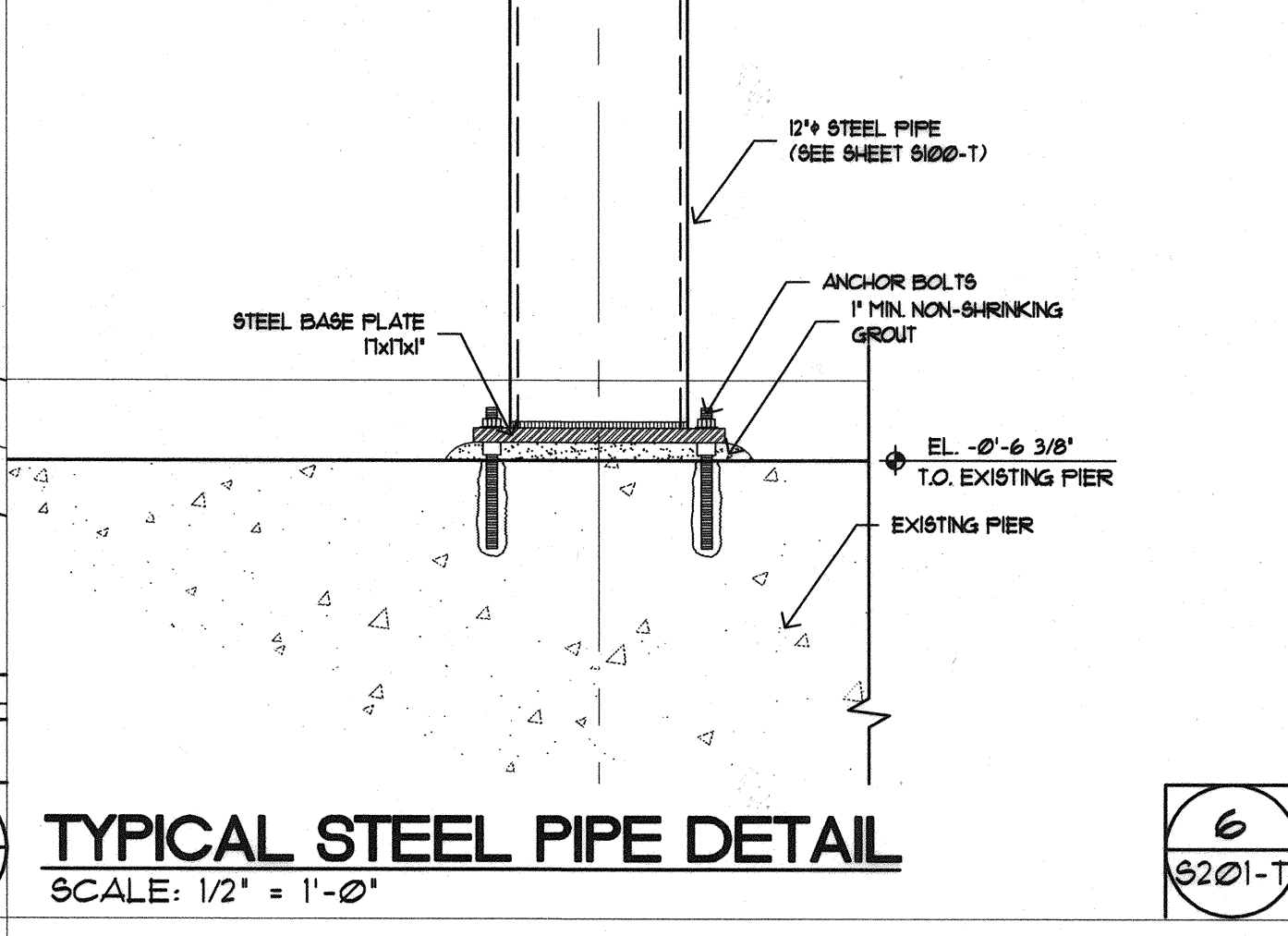
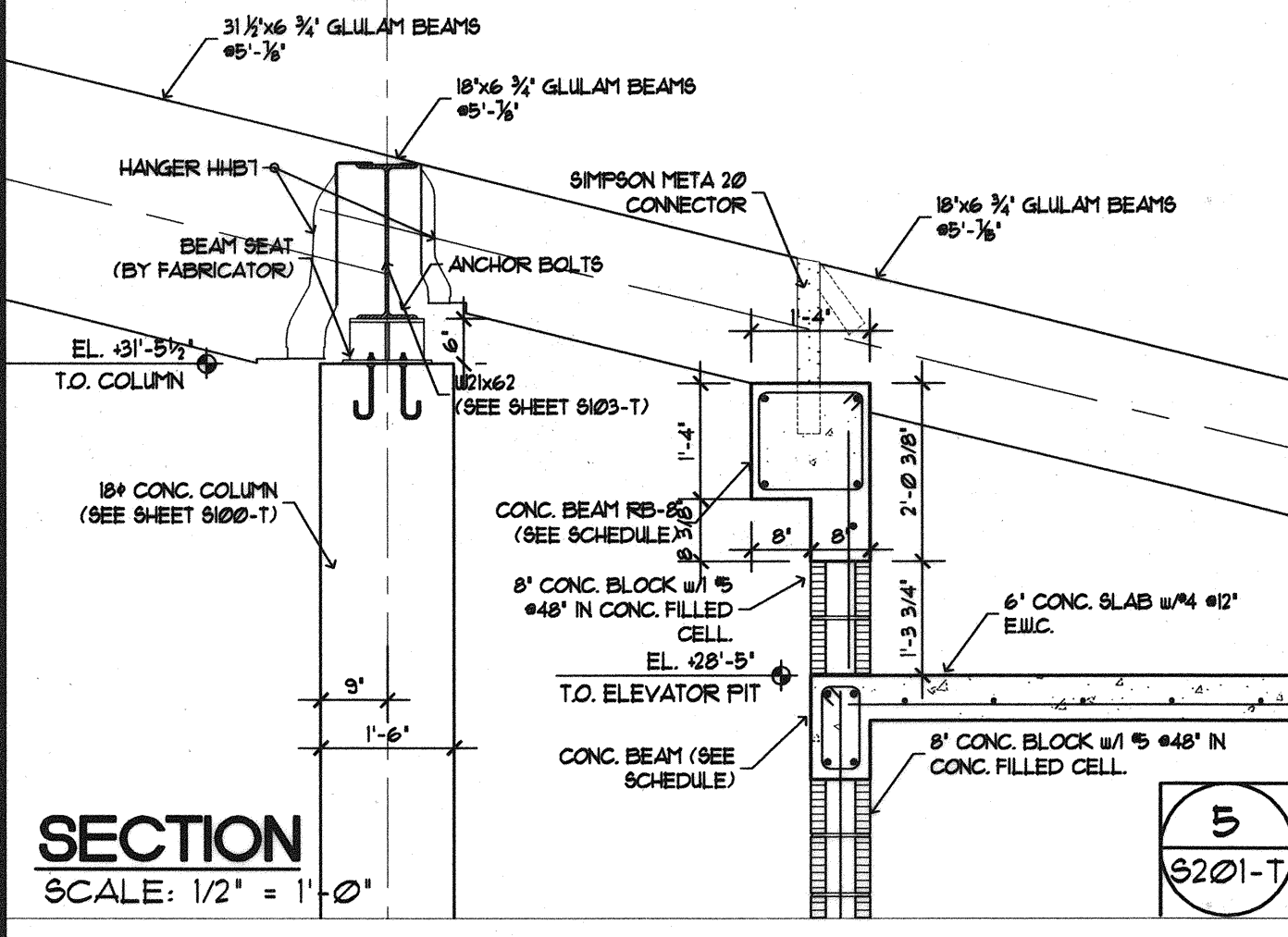
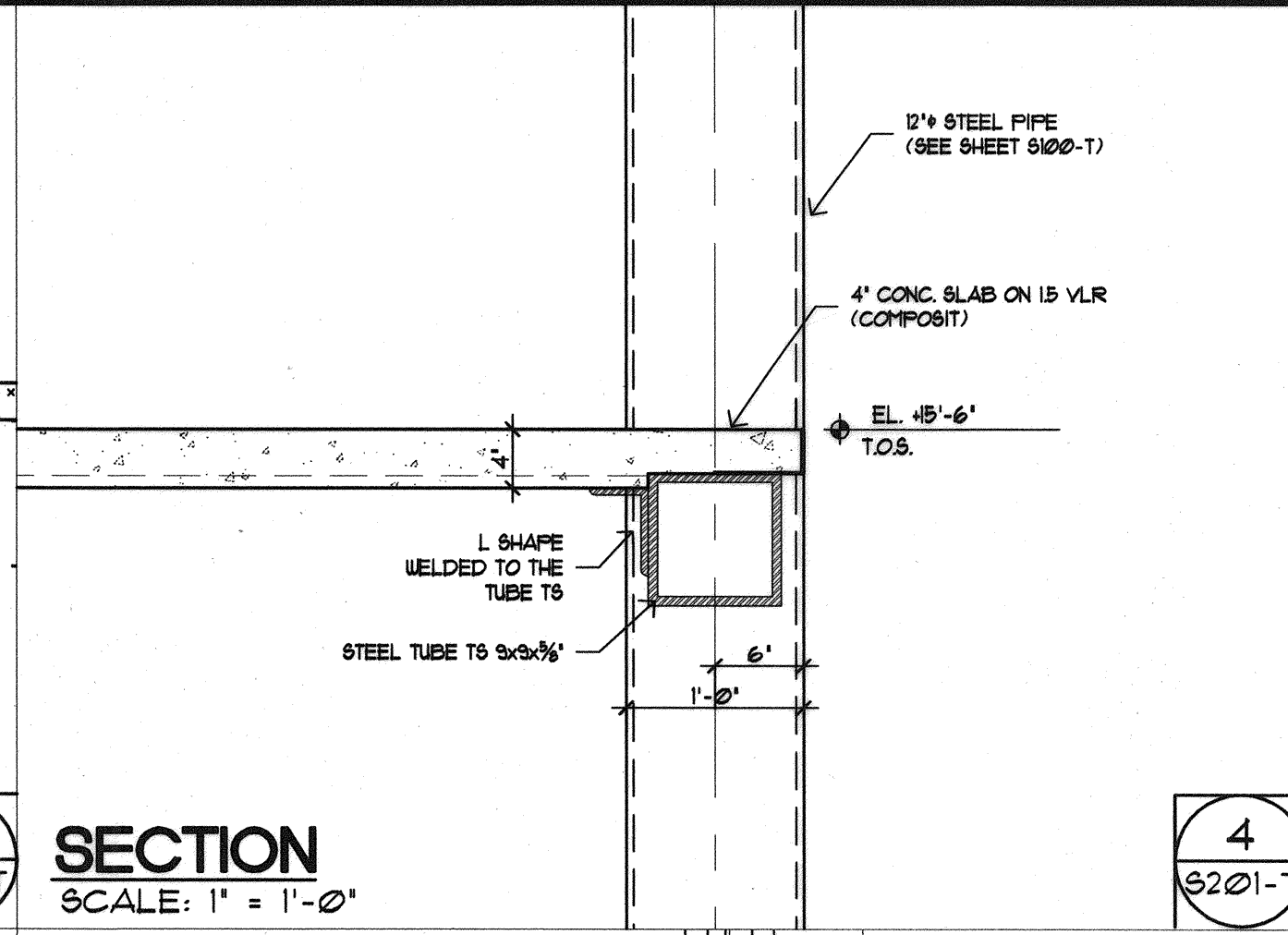
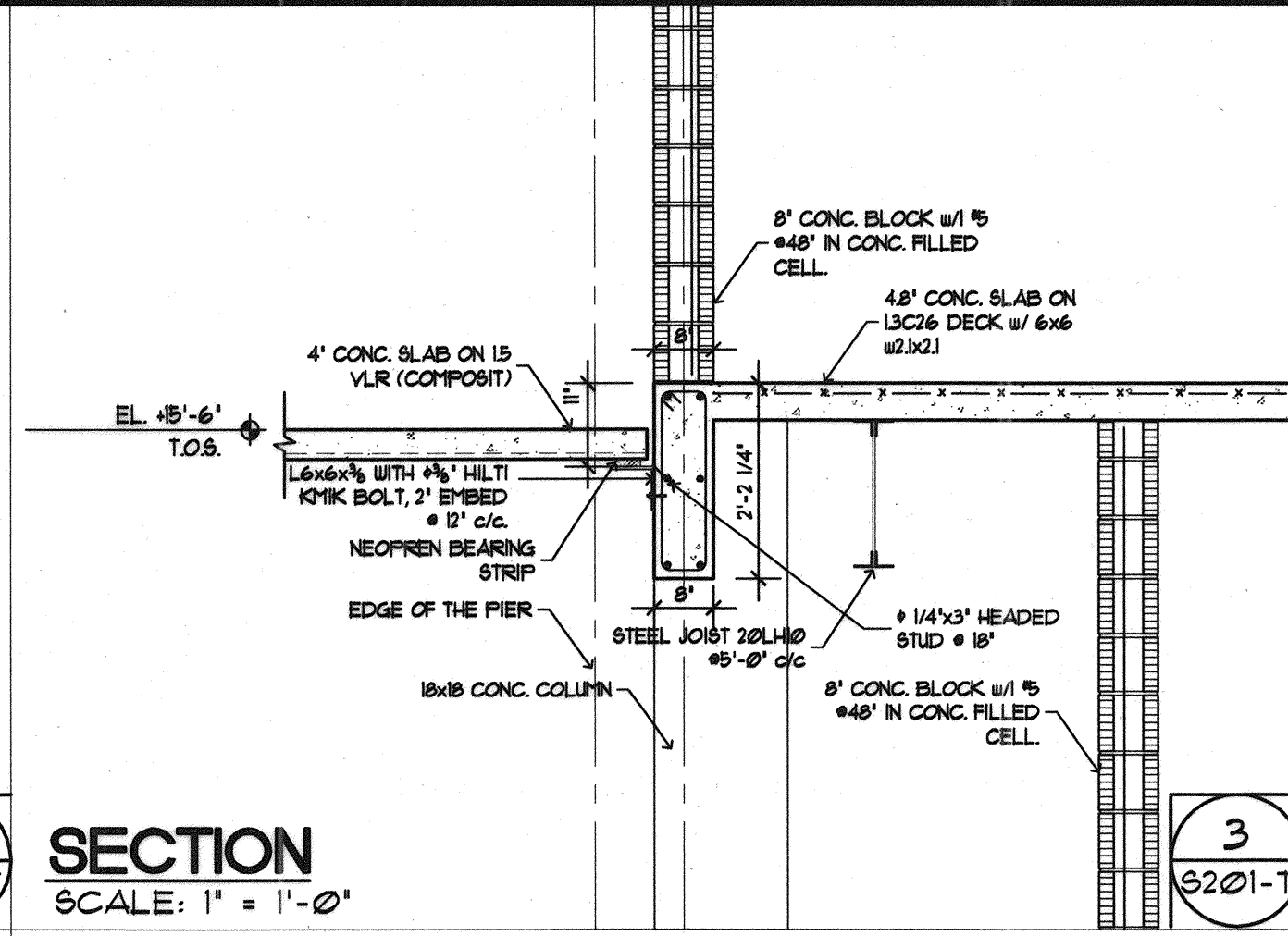
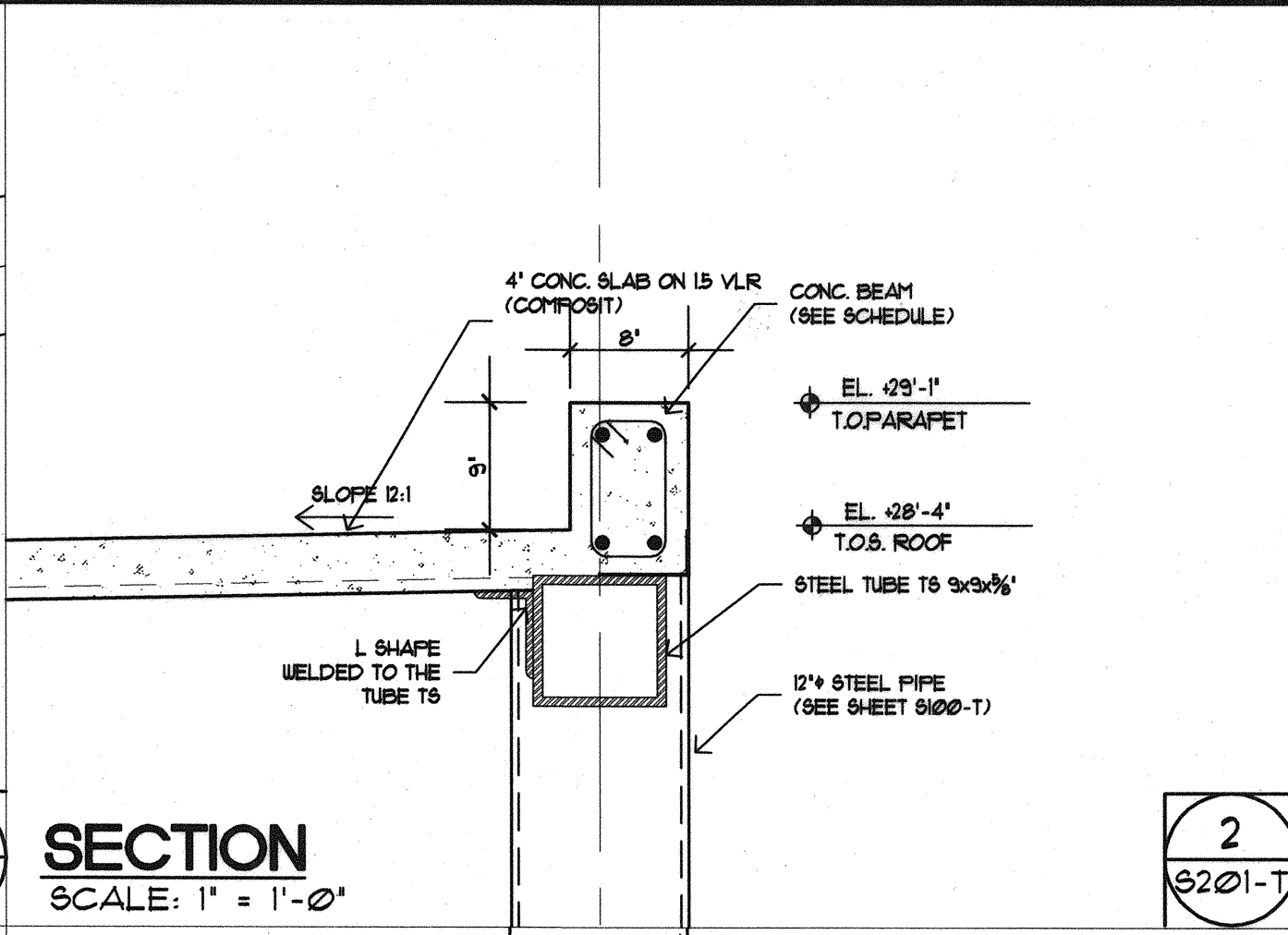
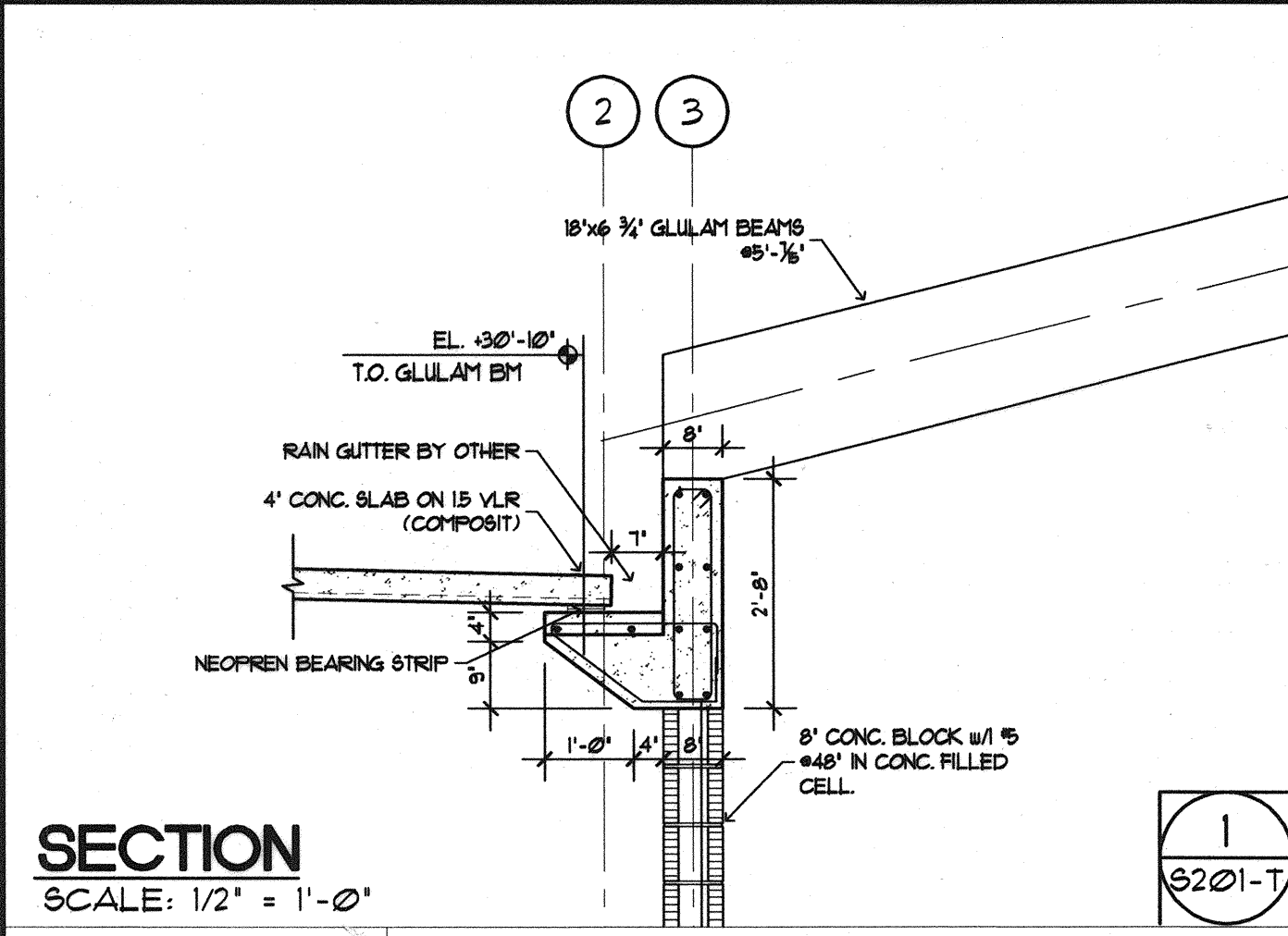


Filename: P:\02-0818 Maine Int Ferry Terminal\PHASE 1\Architecture\FINAL CONSTRUCTION DOCUMENTS\TERMINAL BUILDING\20343802-S201_Sections.dwg, Oct 08, 2004 - 3:56pm



IN ASSOCIATION WITH:
GORRILL-PALMER CONSULTING ENGINEERS
PERATROVICH, NOTTINGHAM & DRAGE
ARCHITECTS
HALEY & ALDRICH

BEA

STATE OF MAINE
DEPARTMENT OF TRANSPORTATION
PROJECT NUMBER 009215.00
PIN 009215.00

PROJ. MANAGER: PAUL POTTE
DESIGN-DETAILED: []
CHECKED-REVIEWED: []
DESIGN-DETAILED: []
DESIGN-DETAILED: []
REVISIONS: 1 []
REVISIONS: 2 []
REVISIONS: 3 []
REVISIONS: 4 []
FIELD CHANGES: []

SIGNATURE: []
P. LICENCE NUMBER: PE 10709
DATE: 10/8/2004

CITY OF PORTLAND
OCEAN GATEWAY PHASE 1
TERMINAL BUILDING
STRUCTURAL DETAILS

S201-T
108 OF 288