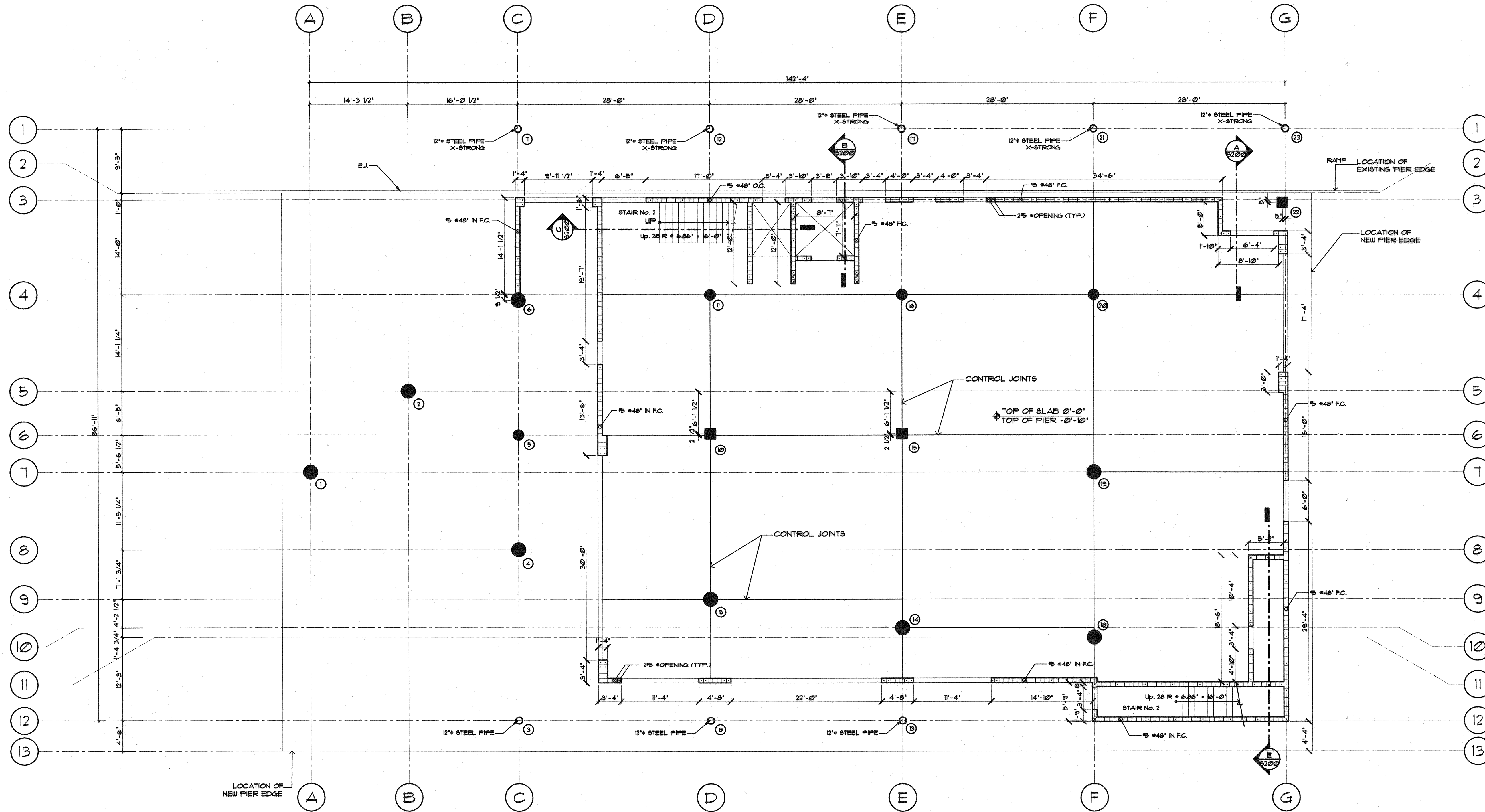


Filename: P:\02-0818 Maine Int Ferry Terminal\PHASE 1\Architecture\FINAL CONSTRUCTION DOCUMENTS\TERMINAL BUILDING\S100-T_Pier Level Plan.dwg, Oct 08, 2004 - 3:43pm

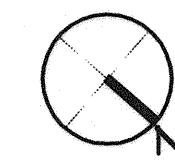


NOTES:

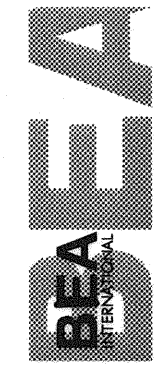
1. FOR GENERAL NOTES REFER TO SHEET S001-T.
2. FOR EXACT LOCATION AND SIZE OF ALL OPENINGS REFER TO ARCHITECTURAL DRAWINGS.
3. SEE COLUMN SCHEDULE IN S001-T FOR CONCRETE COLUMN SIZE AND REBAR DETAIL.

LEGEND:

- DENOTES BEARING MASONRY WALL.
- DENOTES COLUMN AT THIS LEVEL.
- DENOTES COLUMN ENDS BELOW THIS LEVEL.

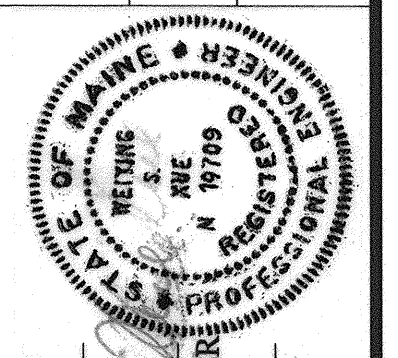


**TERMINAL BUILDING
GROUND FLOOR FRAMING AND REINFORCING PLAN**
SCALE: 1/8"=1'-0"



IN ASSOCIATION WITH:
GORRILL-PALMER CONSULTING ENGINEERS
ARCHITECTS
WATSON SCOTT ARCHITECTS
HALEY & ALDRICH

STATE OF MAINE
DEPARTMENT OF TRANSPORTATION
PROJECT NUMBER 009215.00
PIN
009215.00



SIGNATURE
P. LICENCE NUMBER
DATE

PROJ. MANAGER	PAUL POTTE	BY	DATE
DESIGN-DETAILED			
CHECKED-REVIEWED			
DESIGN2-DETAILED2			
DESIGN3-DETAILED3			
REVISIONS 1			
REVISIONS 2			
REVISIONS 3			
REVISIONS 4			
FIELD CHANGES			

CITY OF PORTLAND
OCEAN GATEWAY PHASE 1
TERMINAL BUILDING
GROUND FLOOR FRAMING PLAN

S100-T