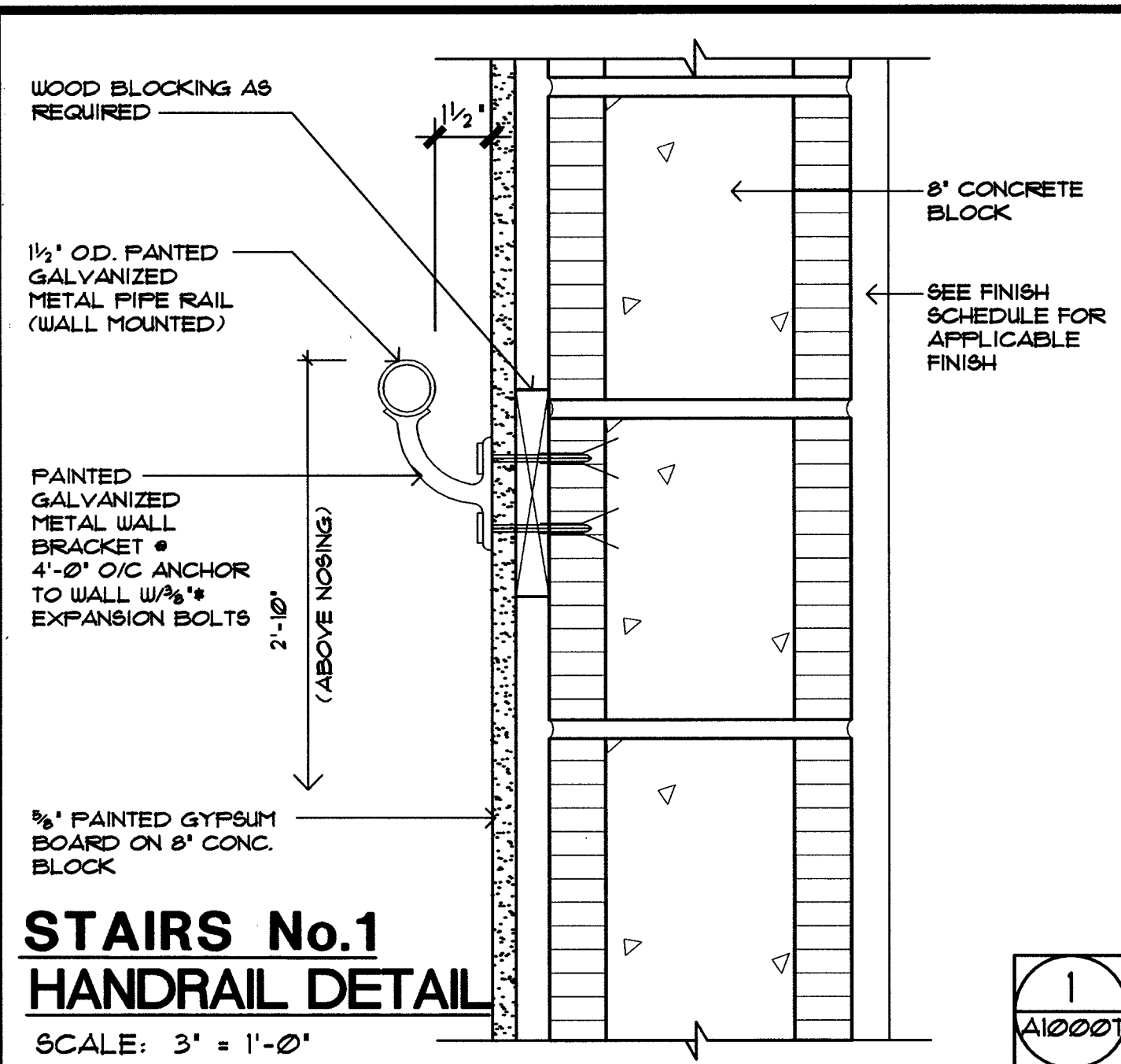
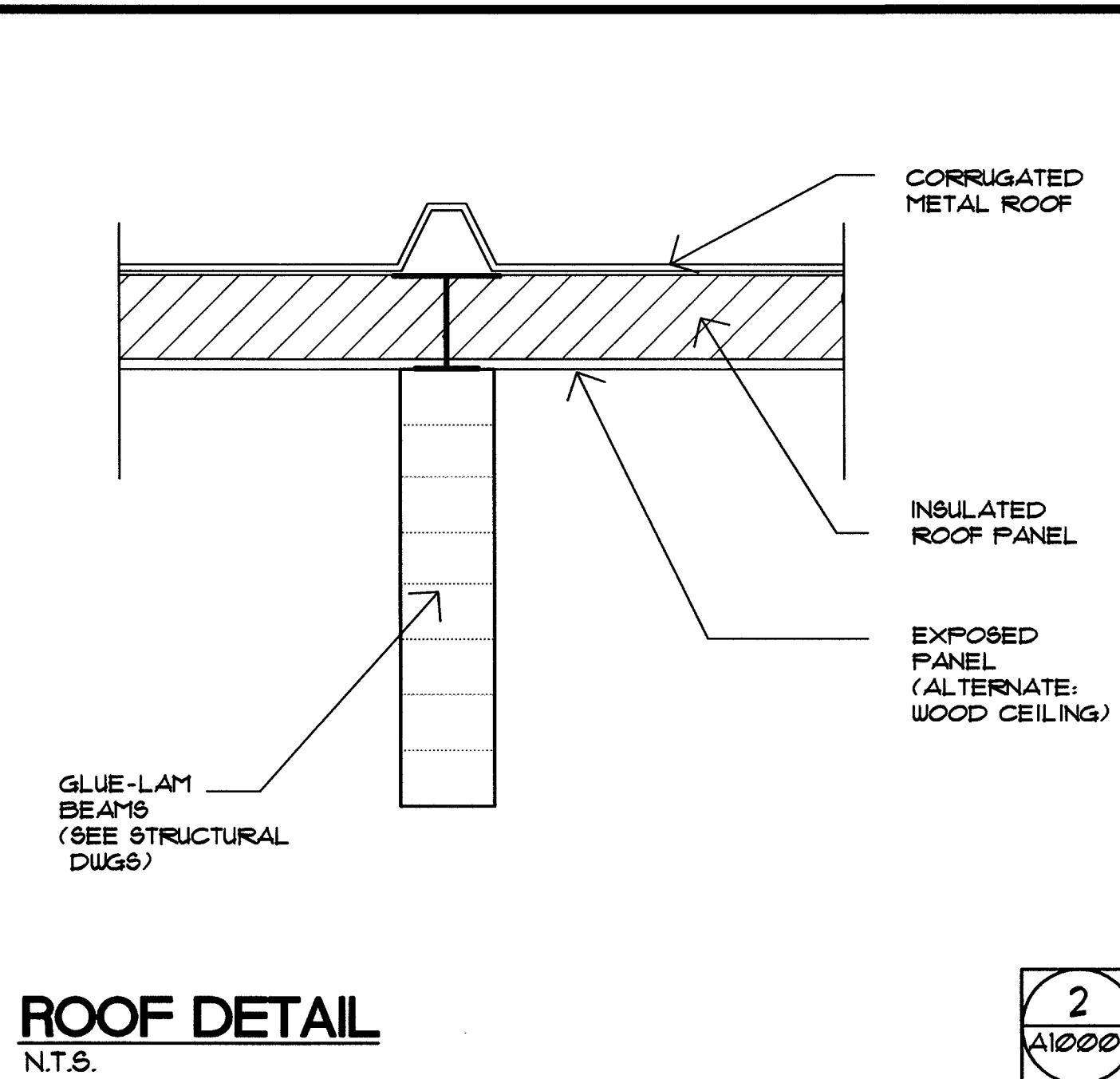


Filename: I:\Server\projects\02-0818 Maine Int Ferry Terminal\PHASE 1\Architecture\FINAL CONSTRUCTION DOCUMENTS\TERMINAL - BUILDING\20343802-T-A1000.dwg, Jan 07, 2005 - 11:41am



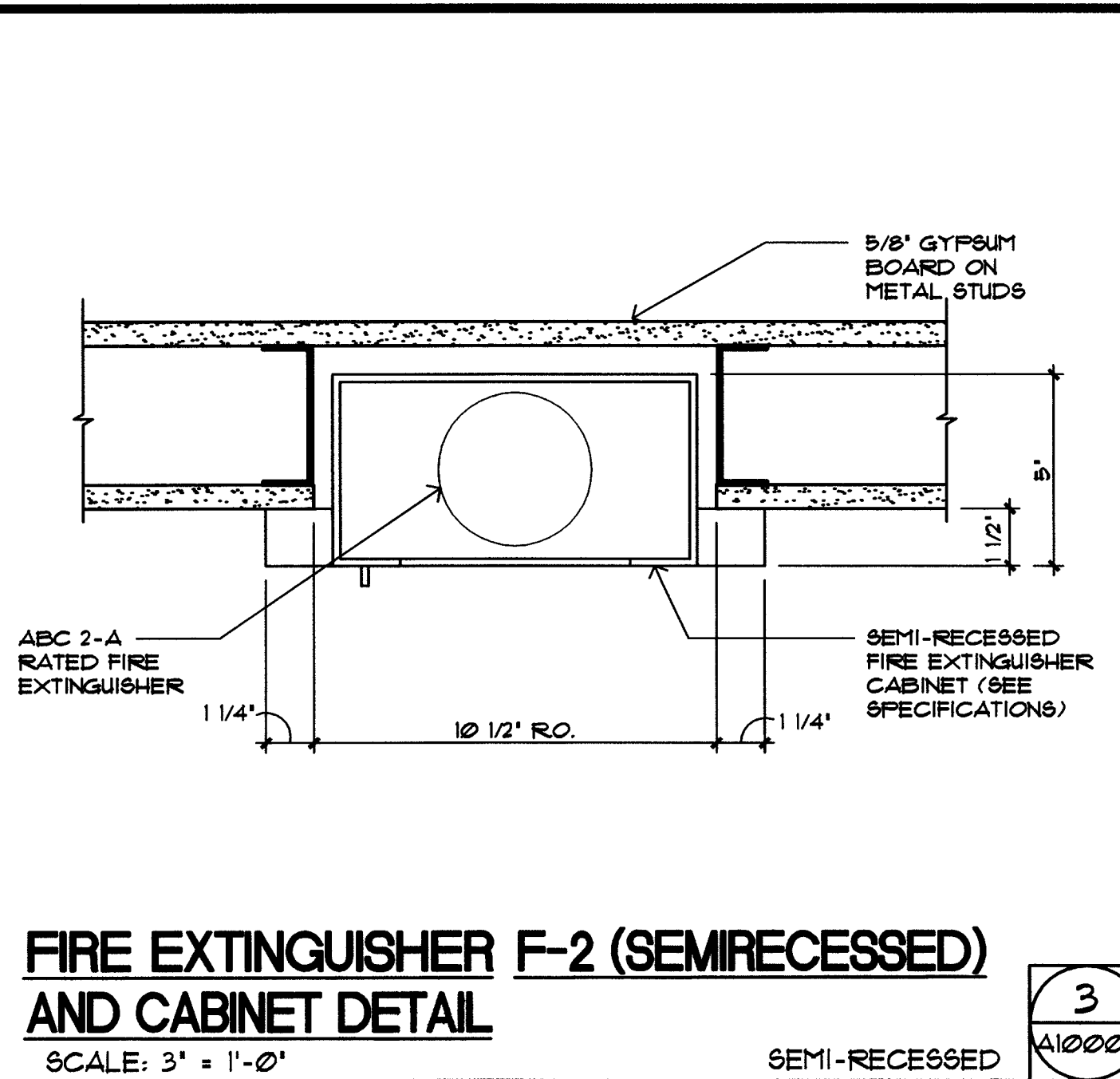
**STAIRS No.1
HANDRAIL DETAIL**

SCALE: 3" = 1'-0"



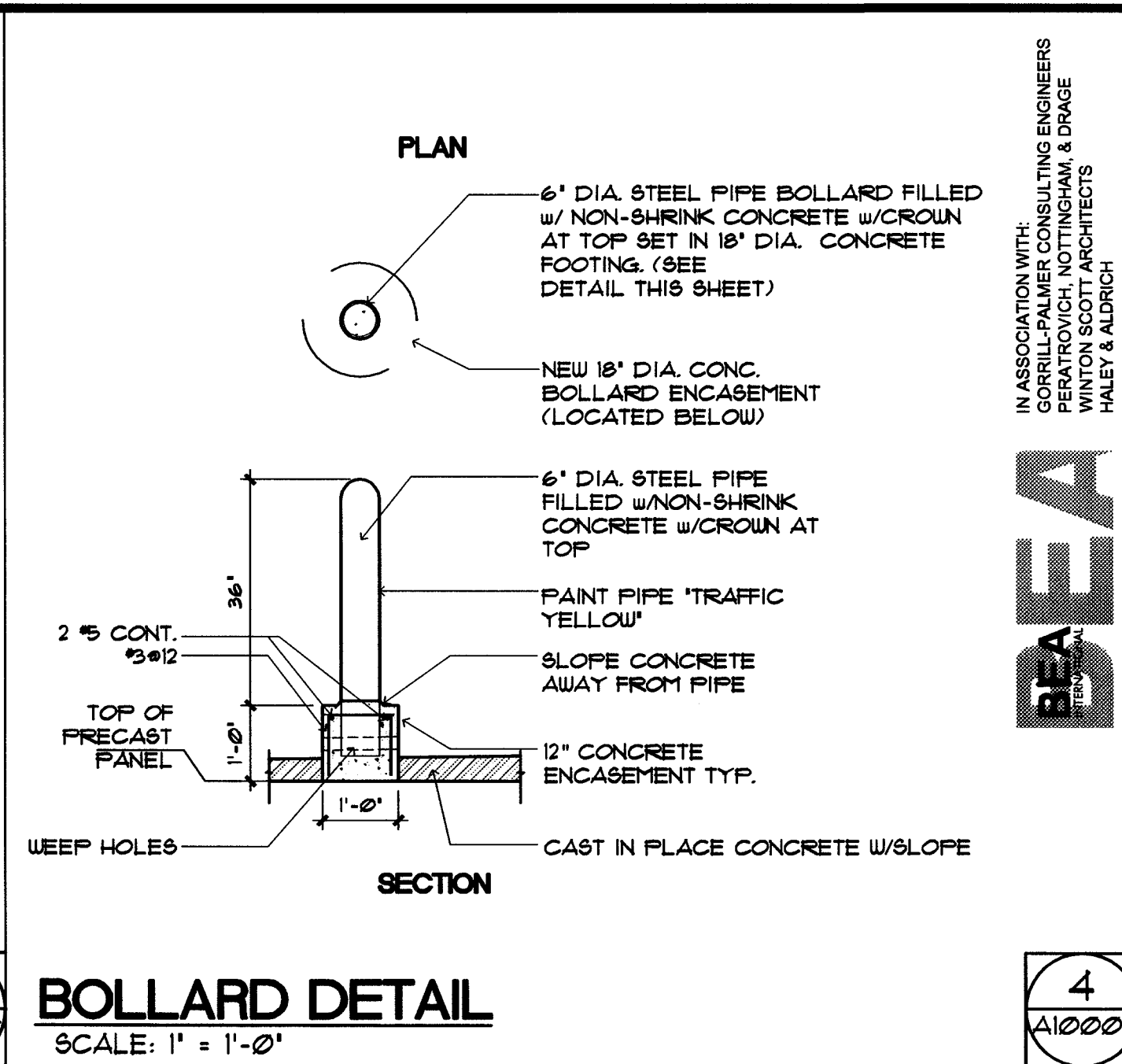
ROOF DETAIL

N.T.S.



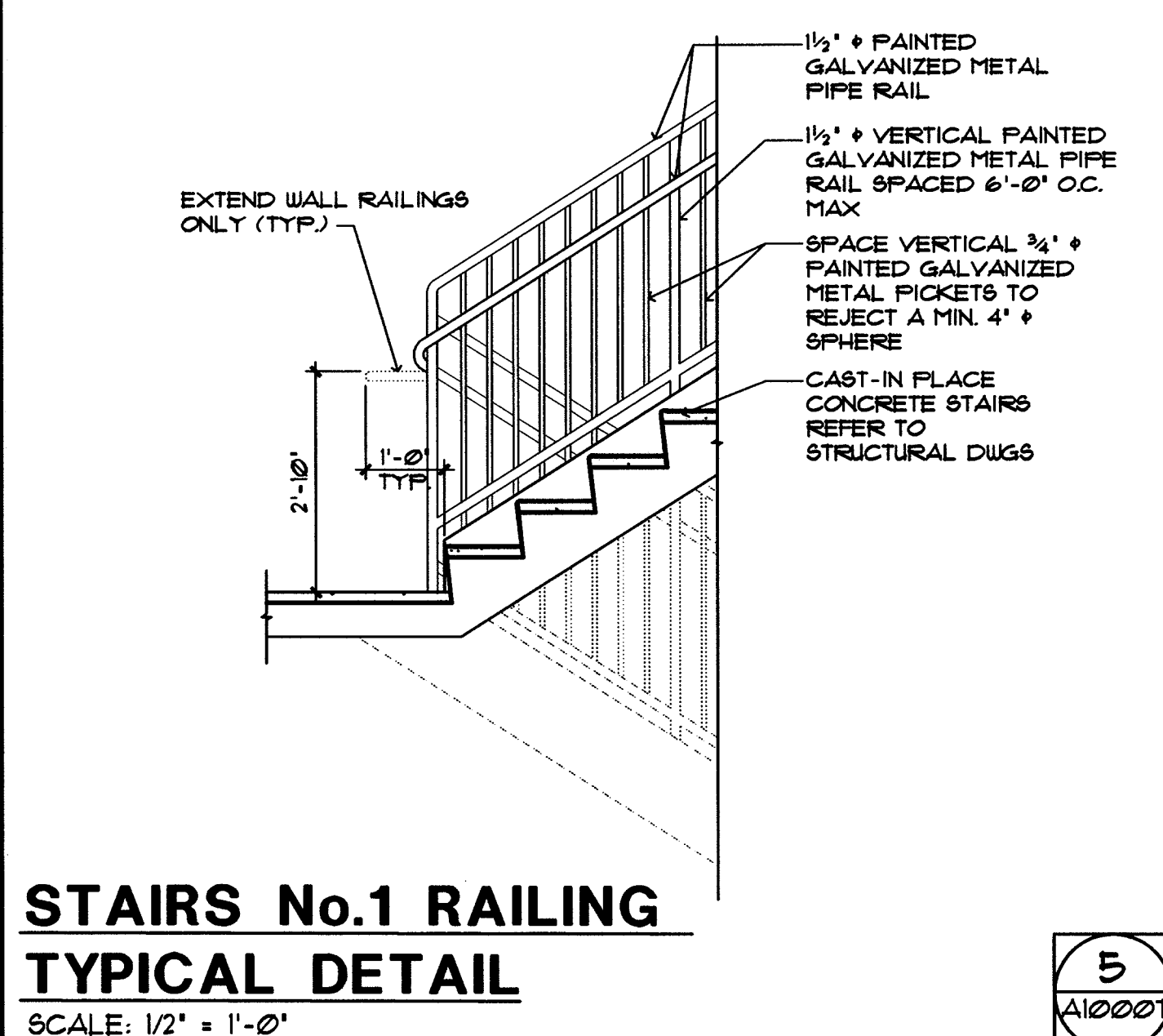
**FIRE EXTINGUISHER F-2 (SEMIRECESSED)
AND CABINET DETAIL**

SCALE: 3" = 1'-0"



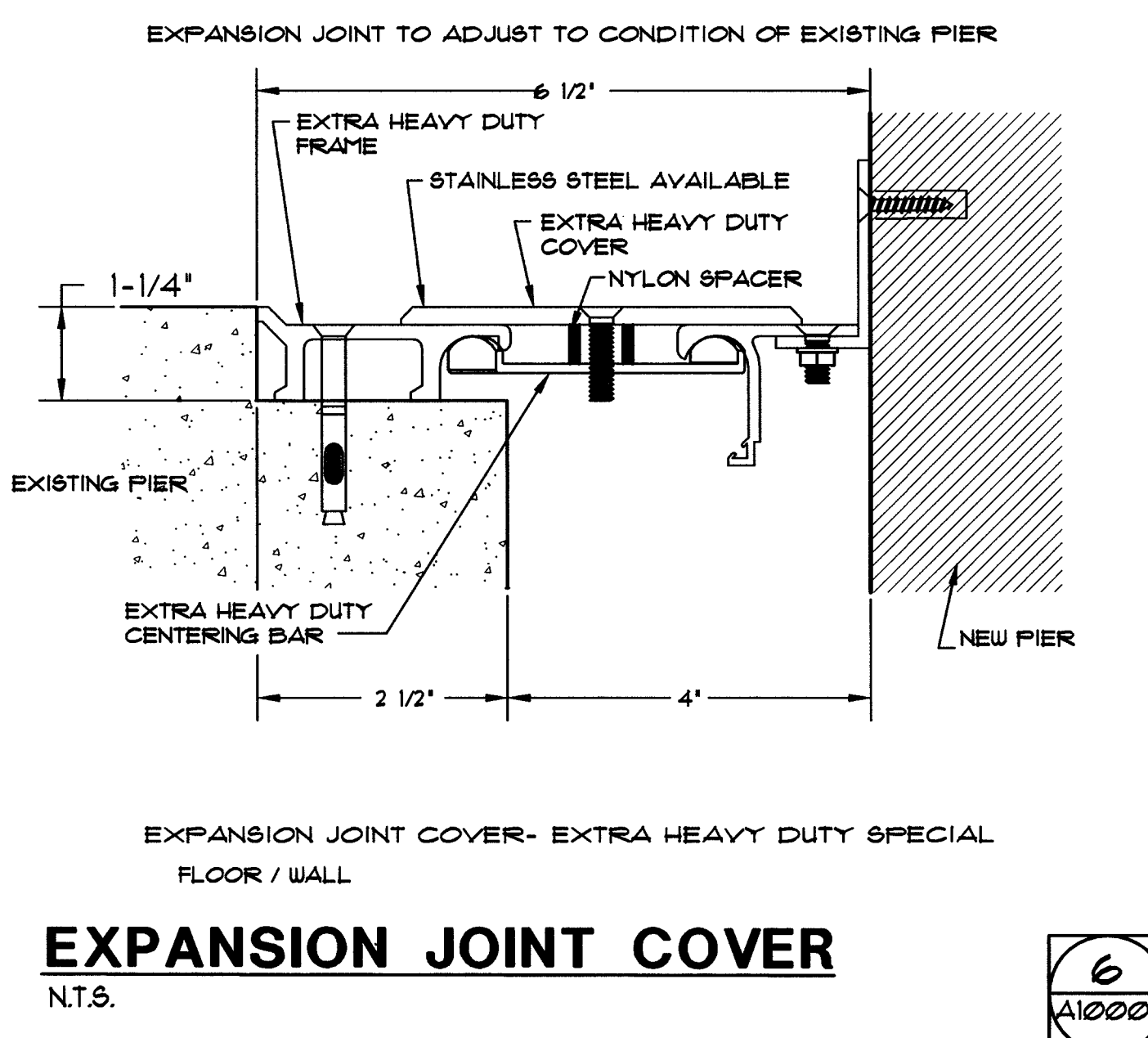
BOLLARD DETAIL

SCALE: 1" = 1'-0"



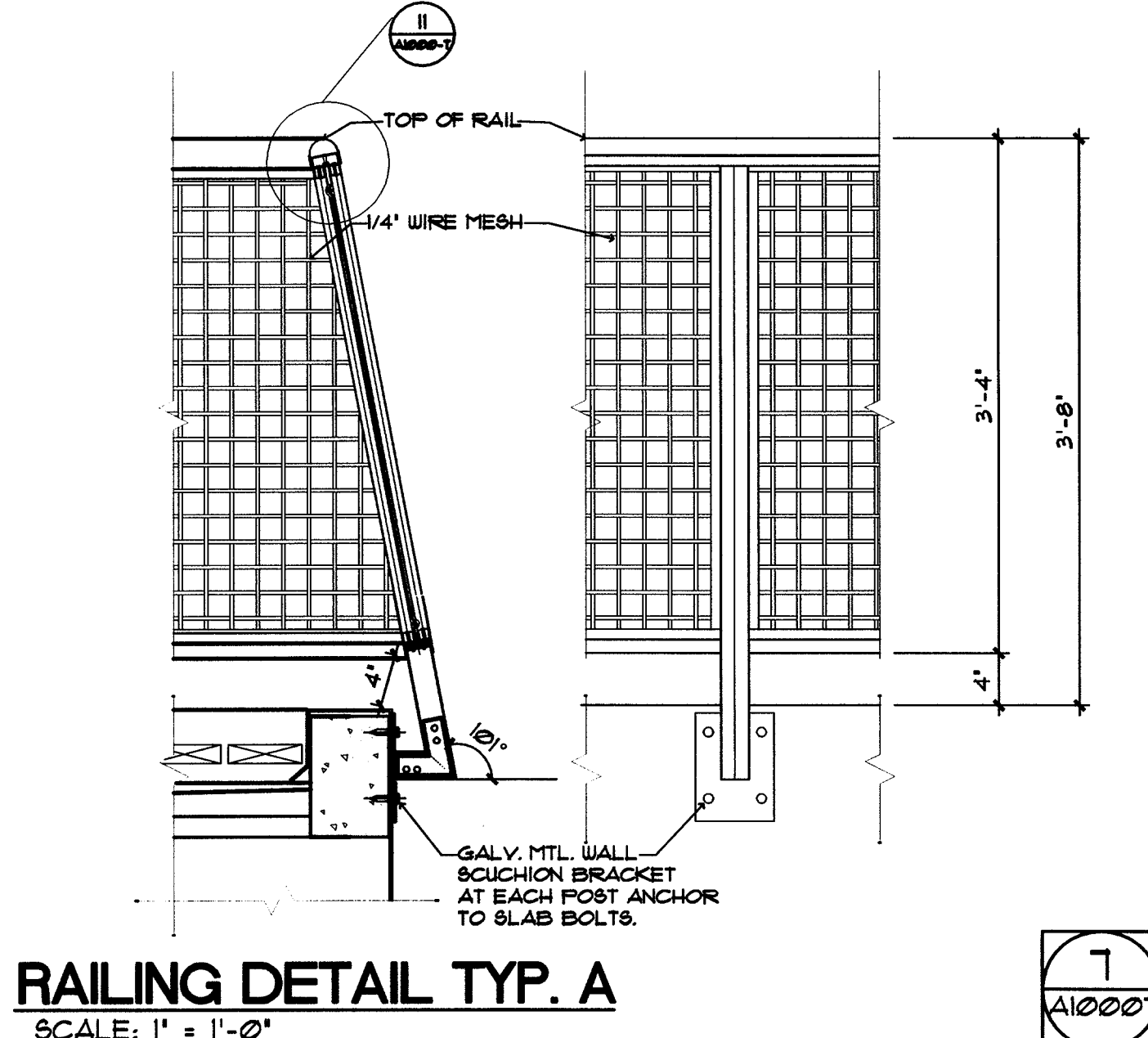
**STAIRS No.1 RAILING
TYPICAL DETAIL**

SCALE: 1/2" = 1'-0"



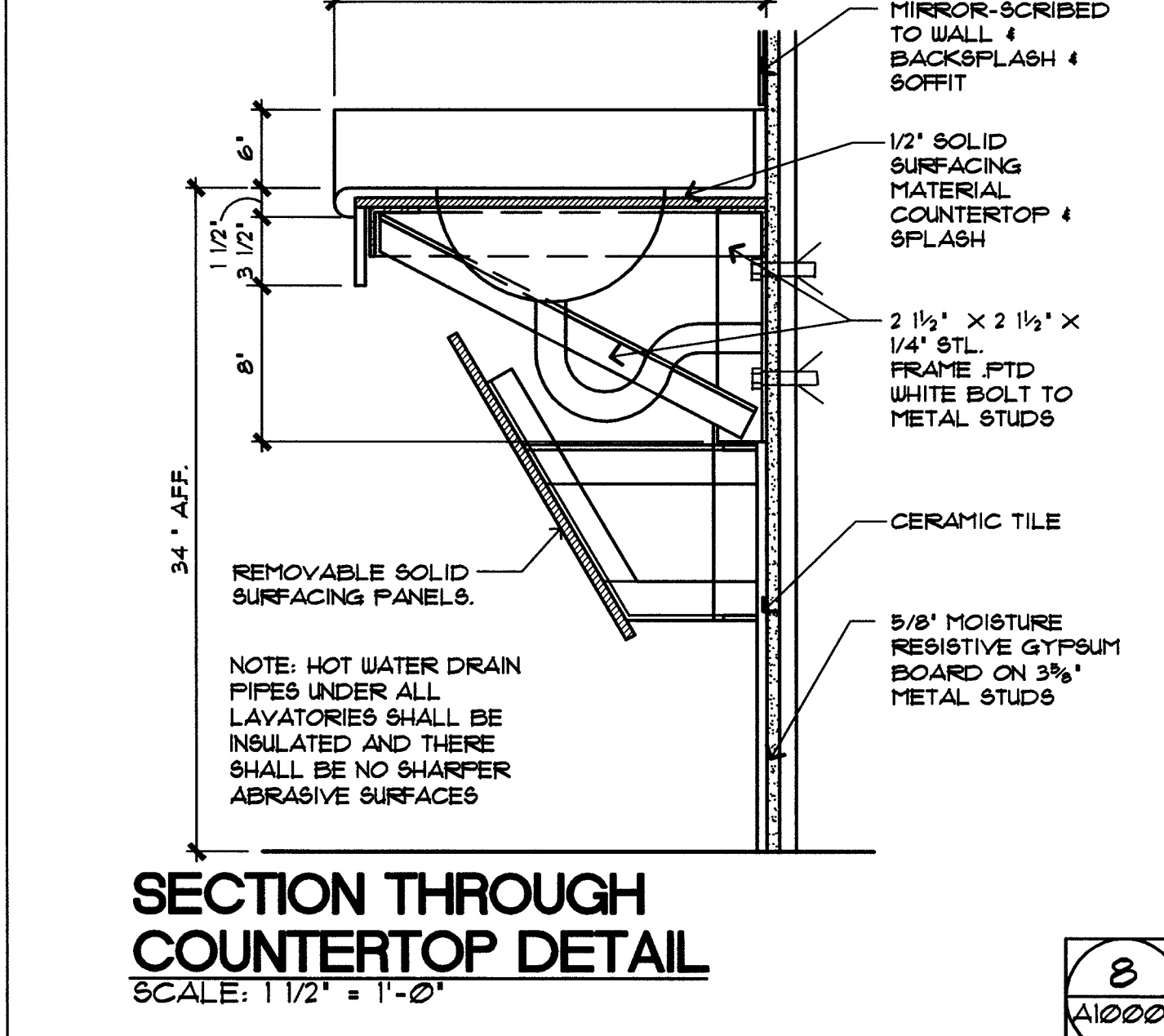
EXPANSION JOINT COVER

N.T.S.



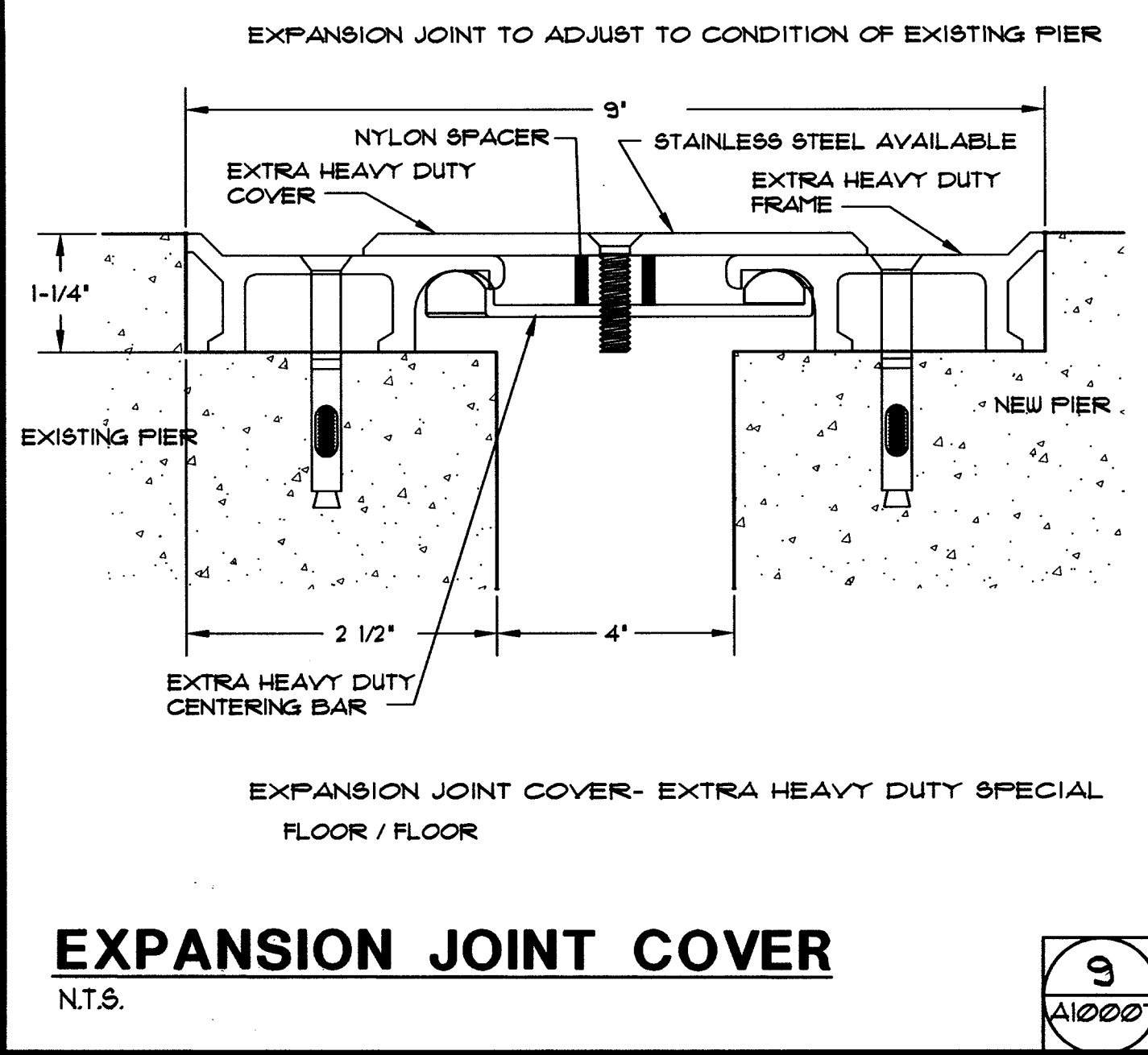
RAILING DETAIL TYP. A

SCALE: 1" = 1'-0"



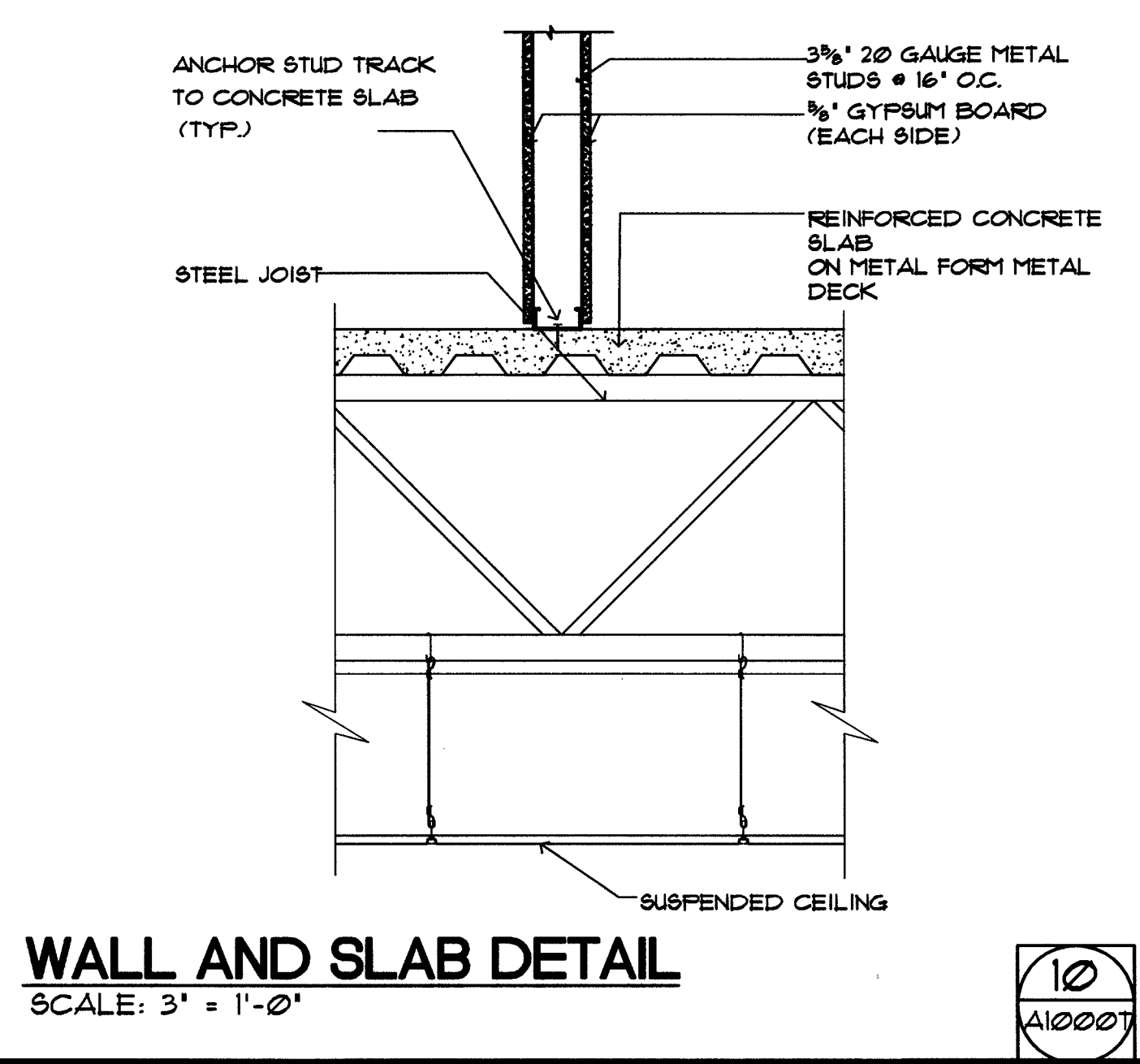
**SECTION THROUGH
COUNTERTOP DETAIL**

SCALE: 1 1/2" = 1'-0"



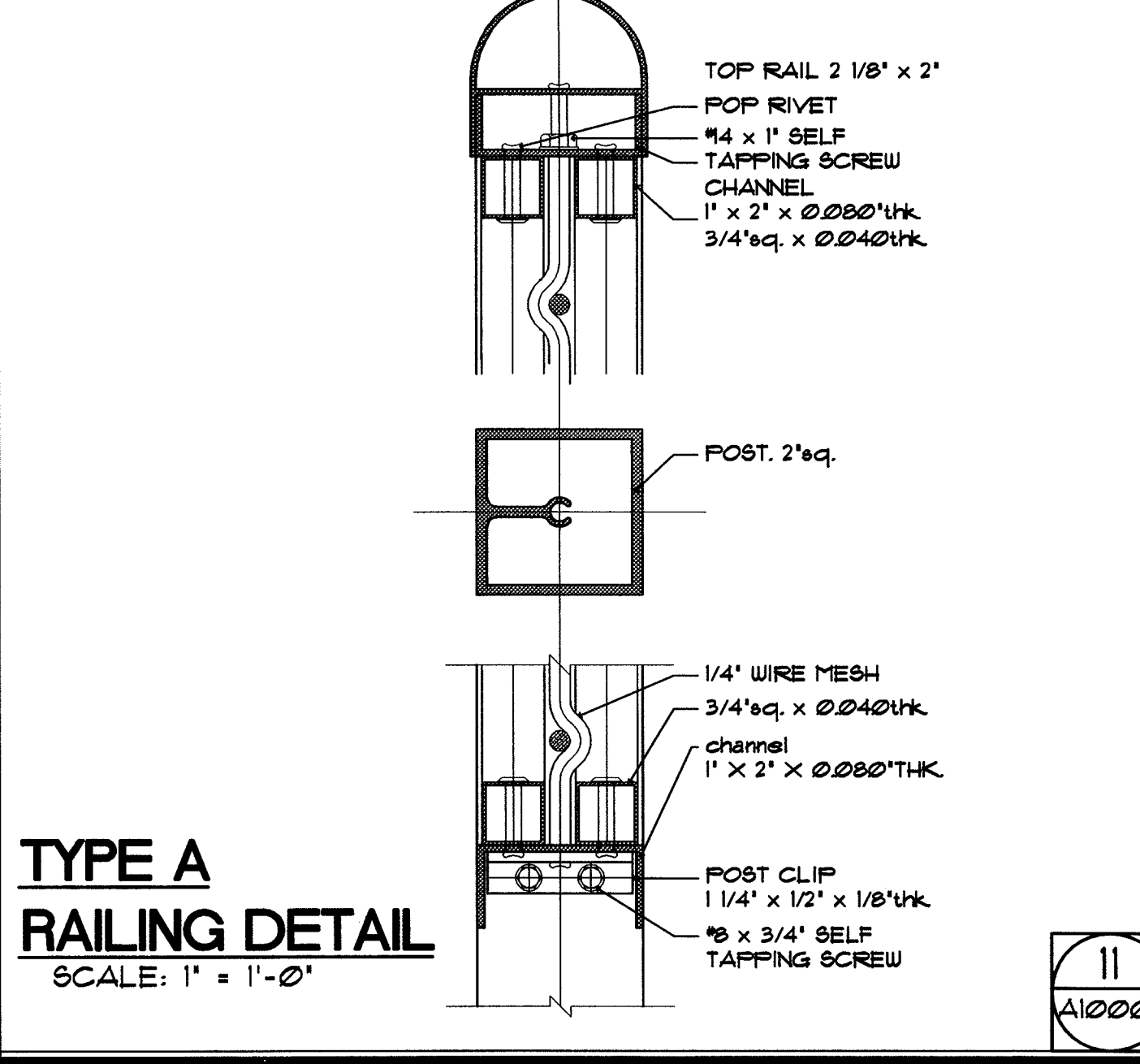
EXPANSION JOINT COVER

N.T.S.



WALL AND SLAB DETAIL

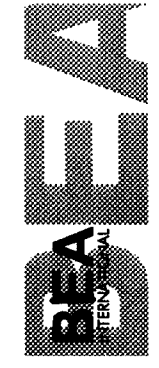
SCALE: 3" = 1'-0"



**TYPE A
RAILING DETAIL**

SCALE: 1" = 1'-0"

IN ASSOCIATION WITH:
GORRILL-PALMER CONSULTING ENGINEERS
PERATROVICH, NOTTINGHAM, & DRAGE
LANDOWN ARCHITECTS
HALEY & ALDRICH



STATE OF MAINE
DEPARTMENT OF TRANSPORTATION

PROJECT NUMBER 009215.00

PIN
009215.00



PROJ. MANAGER	PAUL POTTE	DATE	
DESIGN-DETAILED		SIGNATURE	
CHECKED-REVIEWED		P. LICENCE NUMBER	ARC 2644
DESIGN-DETAILED2		DATE	10/8/2004
DESIGN-DETAILED3			
REVISIONS 1			
REVISIONS 2			
REVISIONS 3			
REVISIONS 4			
FIELD CHANGES			

CITY OF PORTLAND
OCEAN GATEWAY PHASE 1

DETAILS

A1000-T