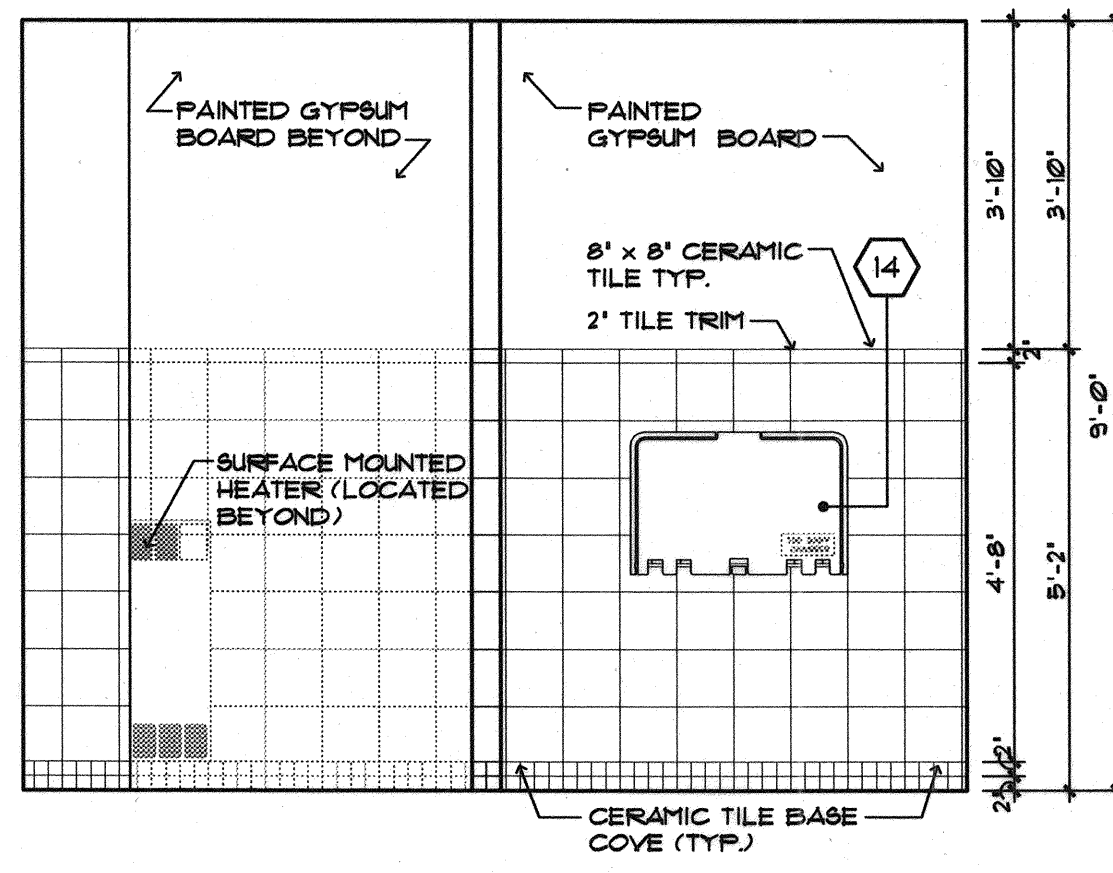


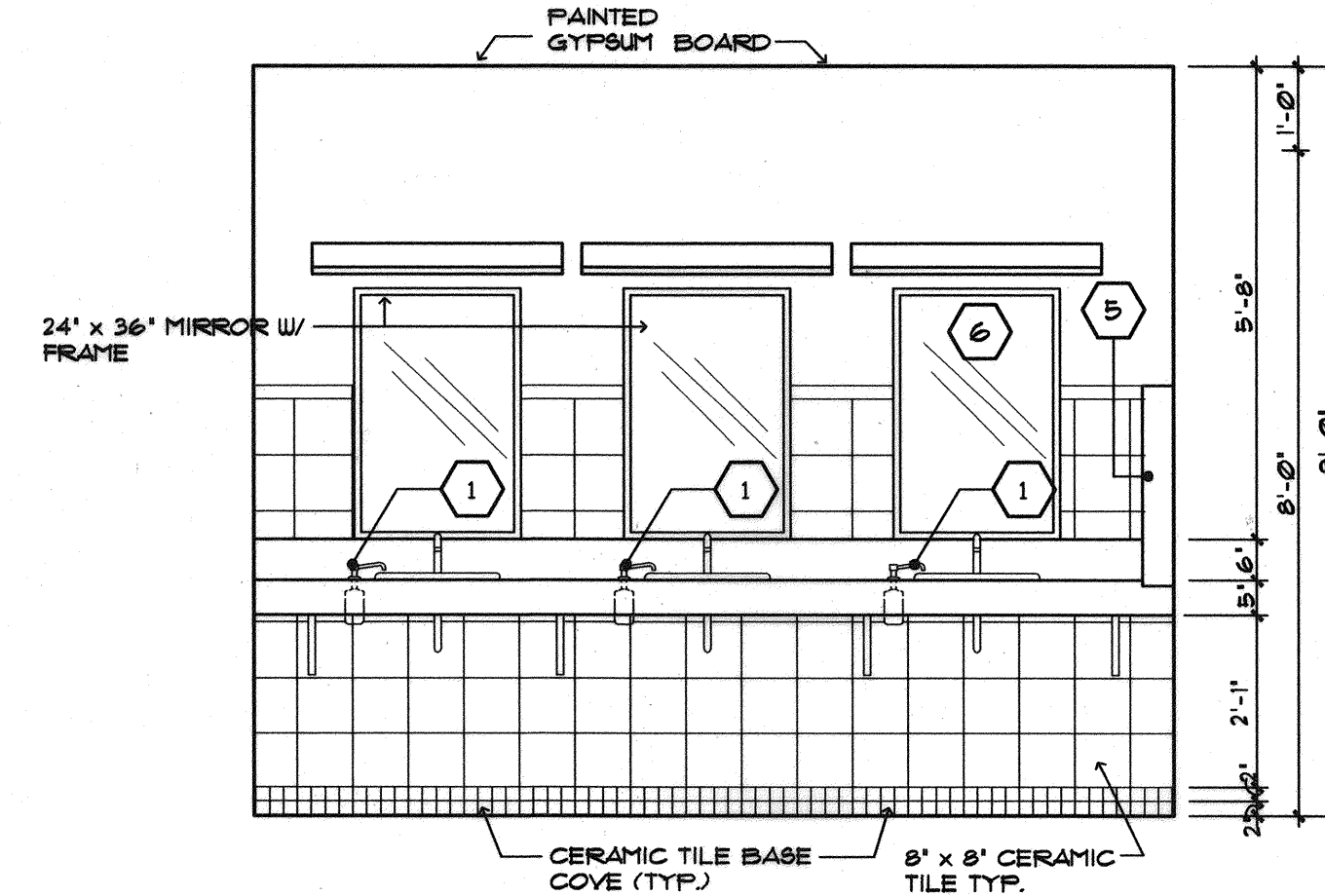
**WOMEN'S RESTROOM
ELEVATION**
SCALE: 1/2"=1'-0"

12



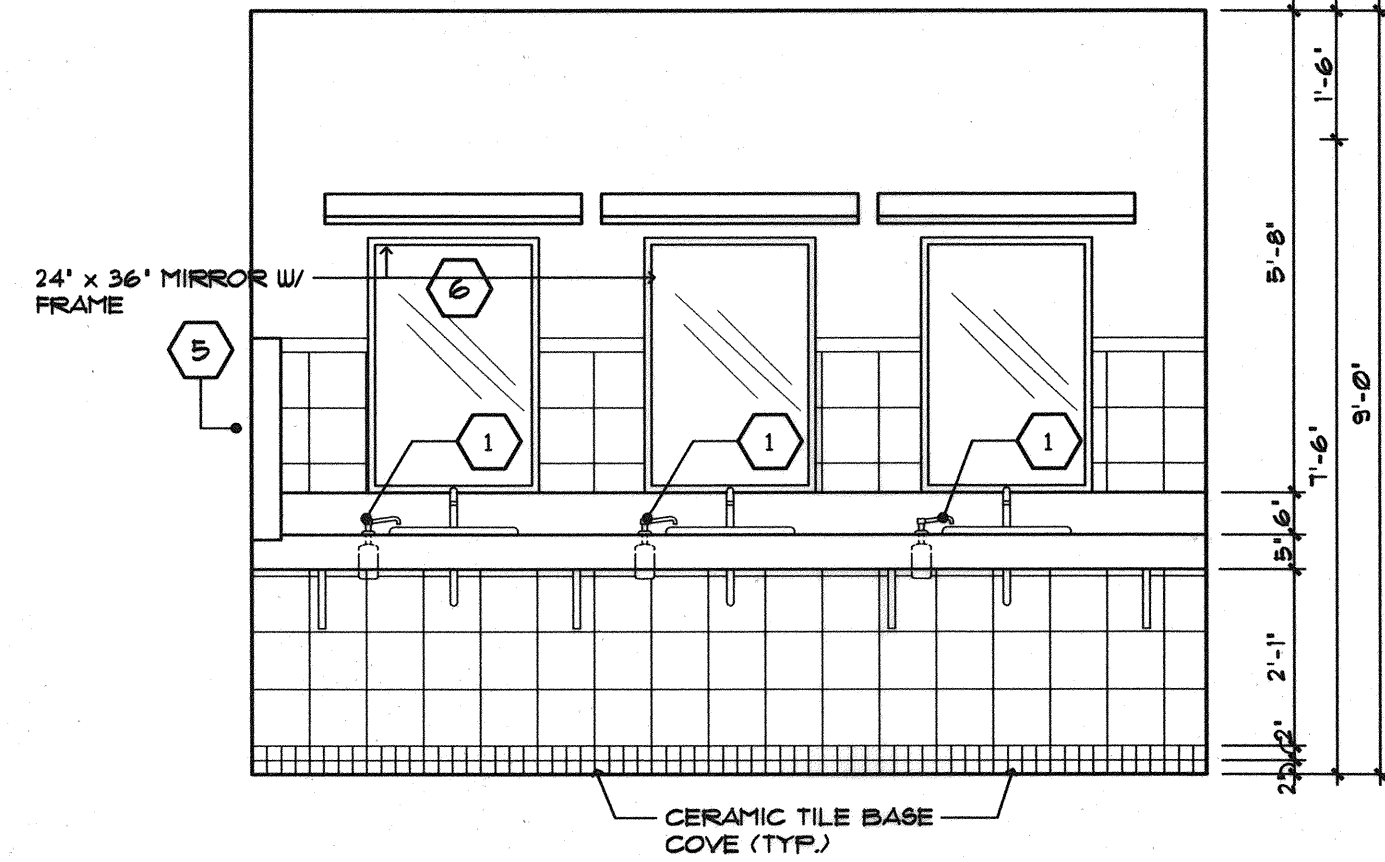
**WOMEN'S RESTROOM
ELEVATION**
SCALE: 1/2"=1'-0"

13



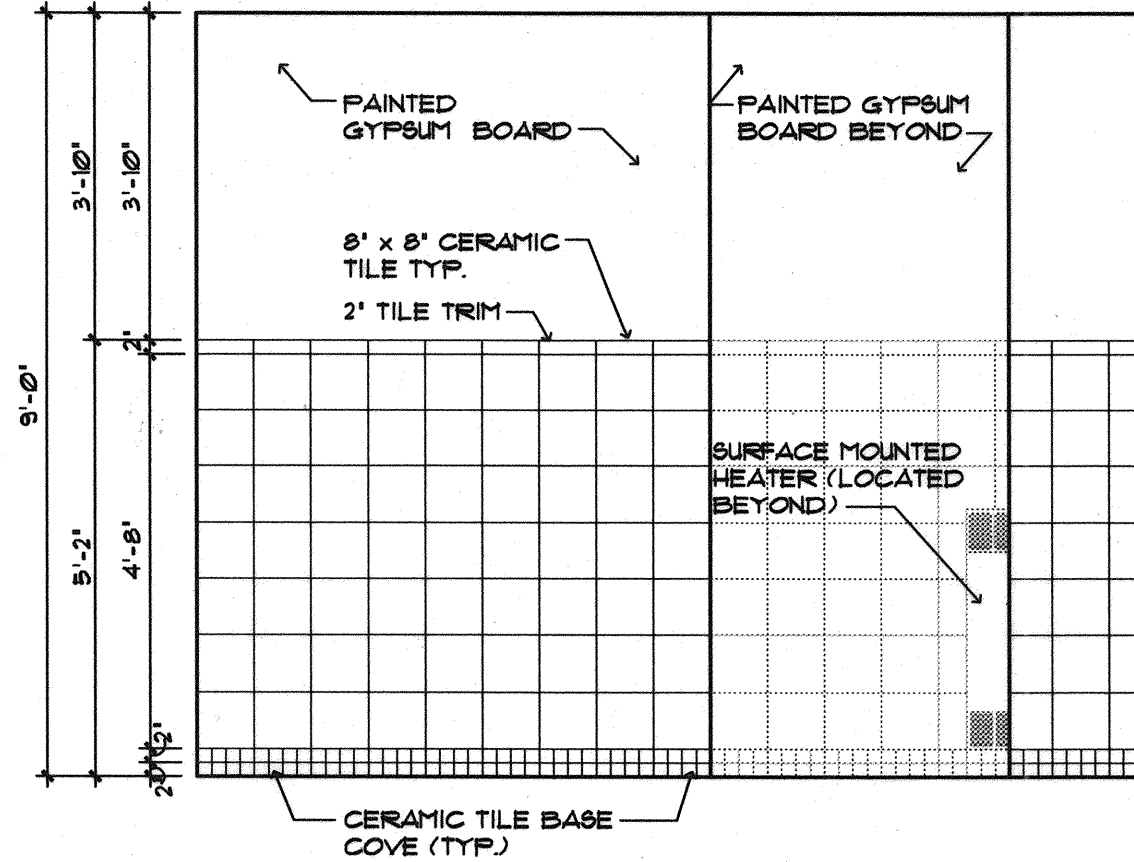
**WOMEN'S RESTROOM
ELEVATION**
SCALE: 1/2"=1'-0"

14



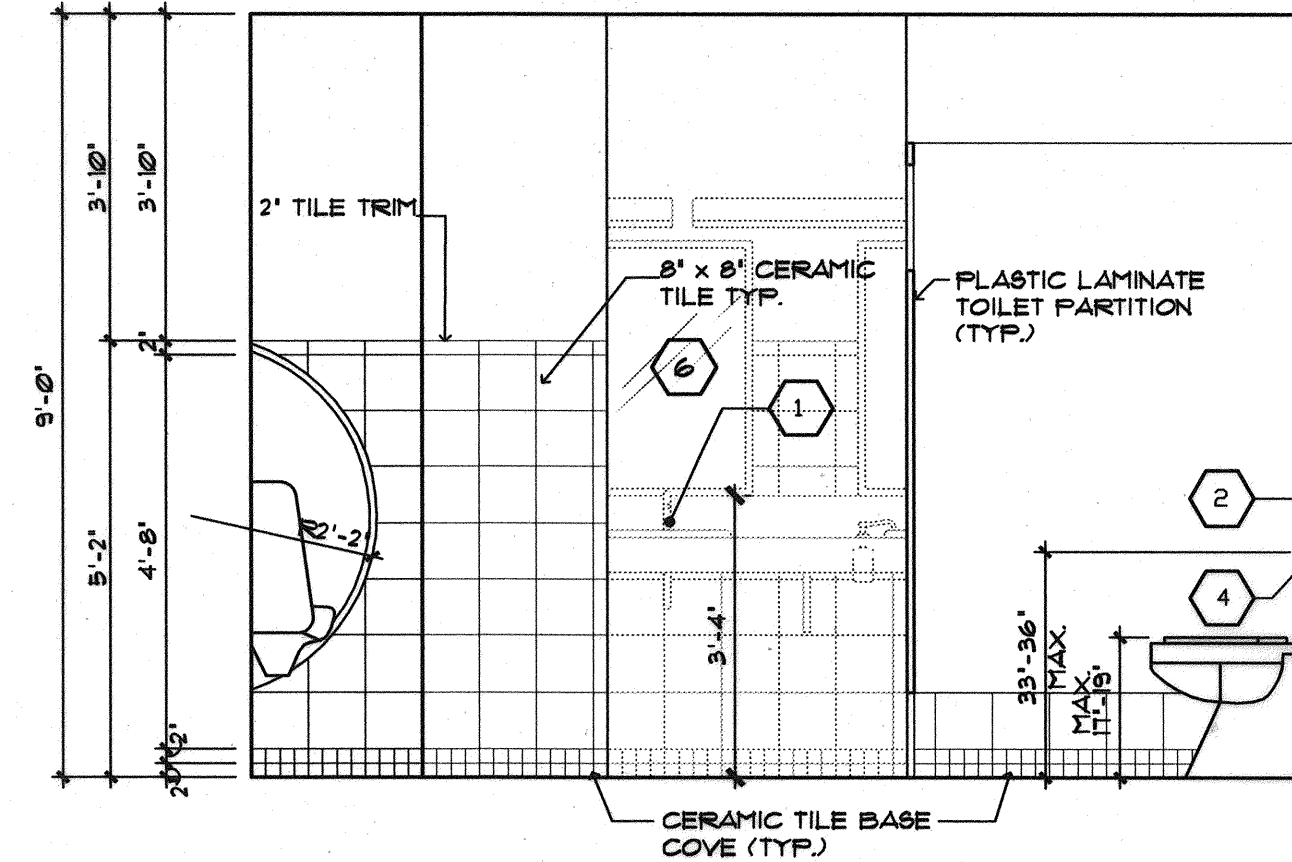
**MEN'S RESTROOM
ELEVATION**
SCALE: 1/2"=1'-0"

15



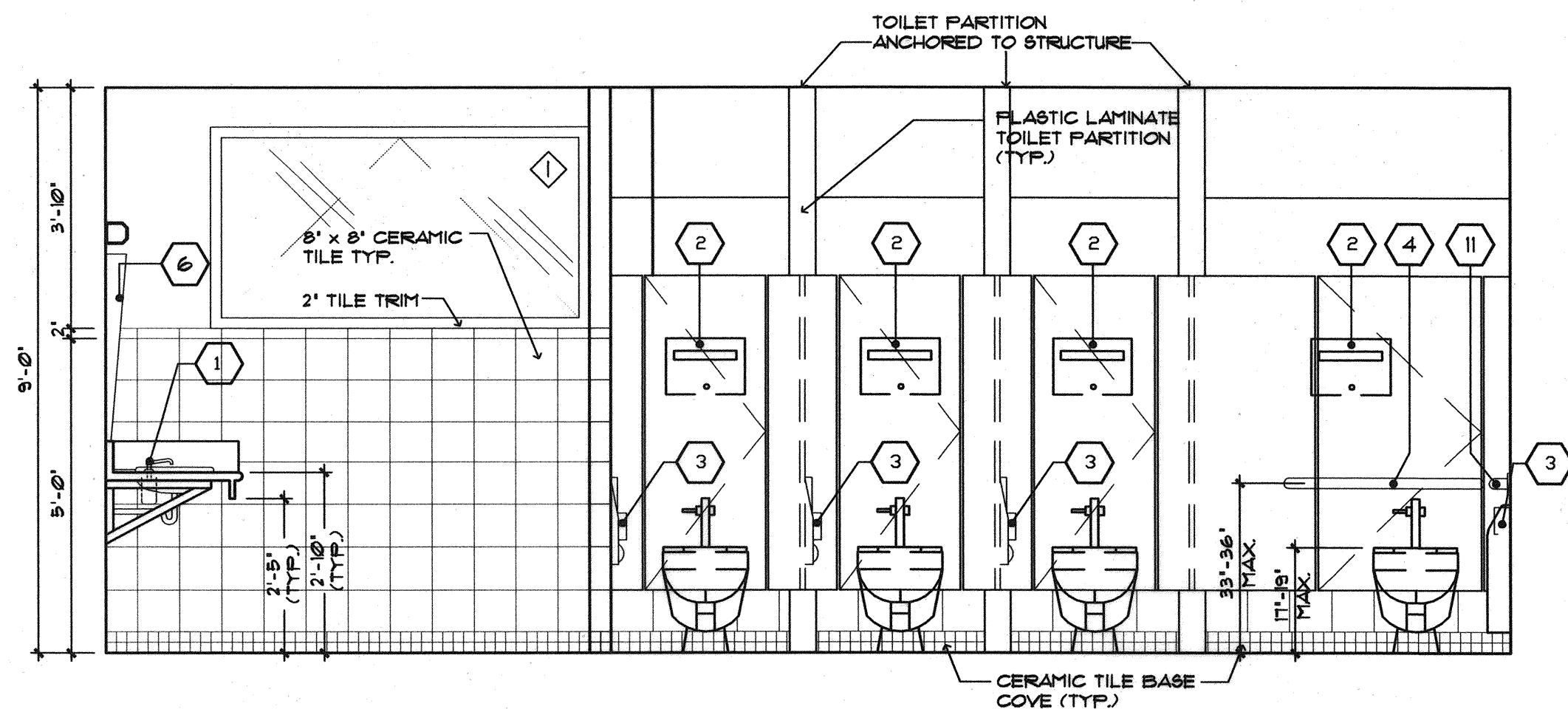
**MEN'S RESTROOM
ELEVATION**
SCALE: 1/2"=1'-0"

16



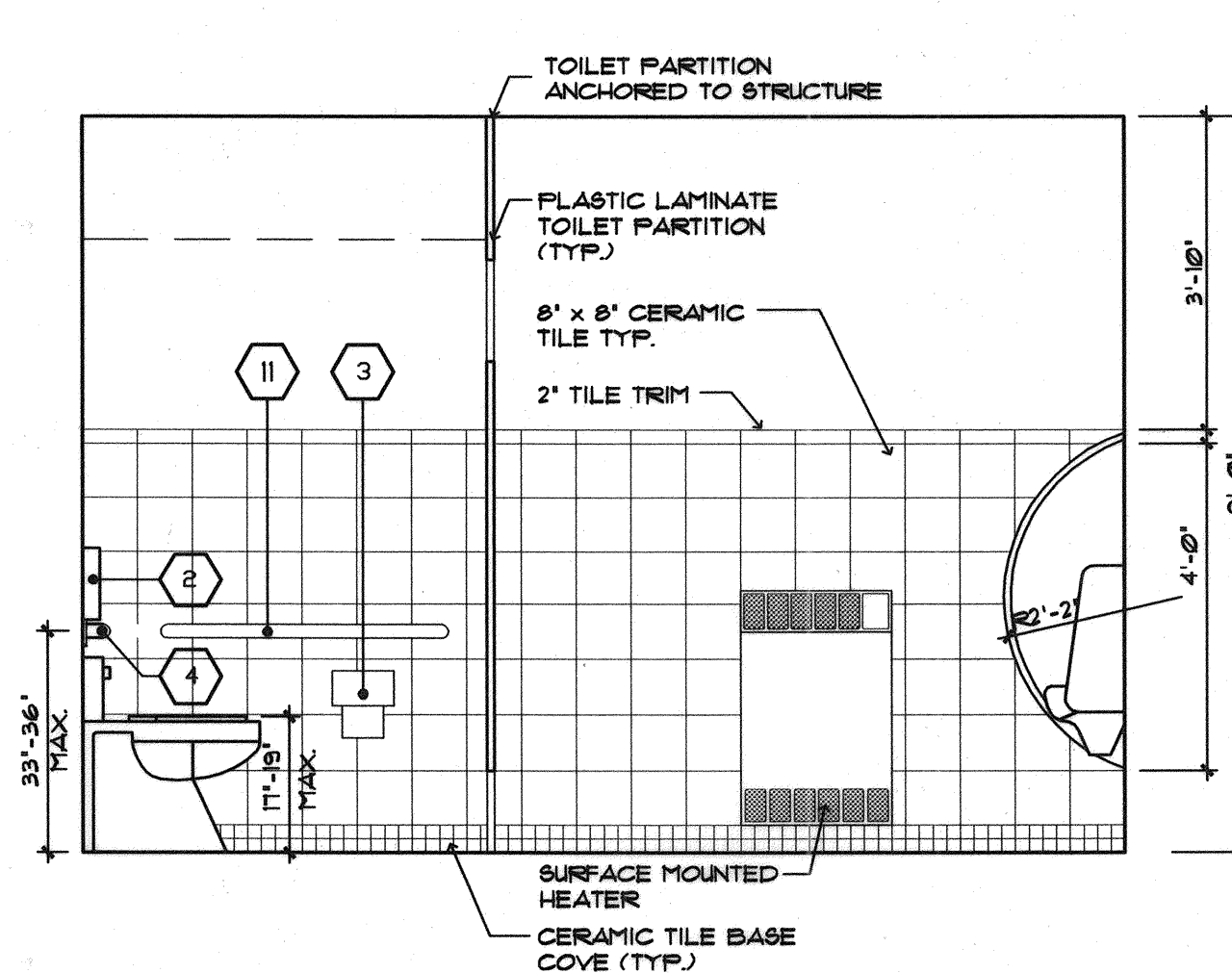
**MEN'S RESTROOM
ELEVATION**

17



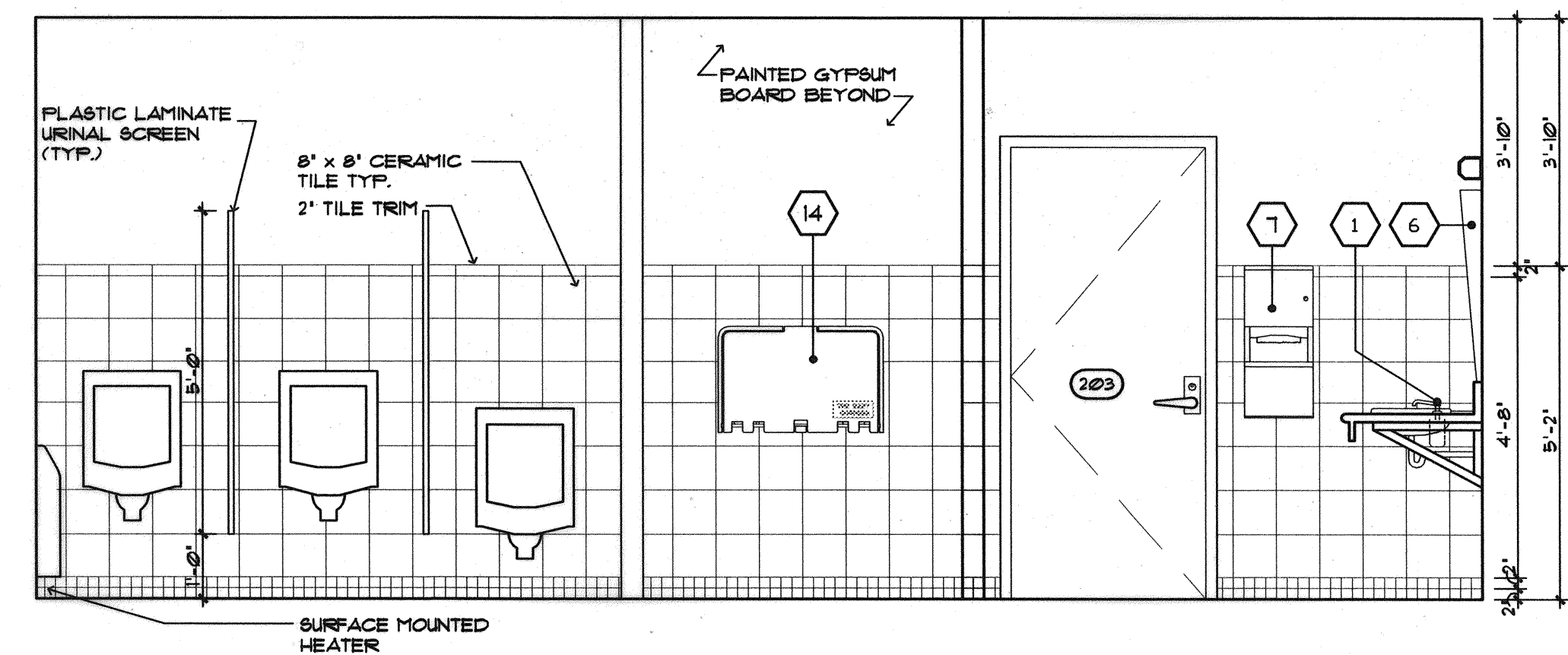
**MEN'S RESTROOM
ELEVATION**
SCALE: 1/2"=1'-0"

18



**MEN'S RESTROOM
ELEVATION**
SCALE: 1/2"=1'-0"

19



**MEN'S RESTROOM
ELEVATION**
SCALE: 1/2"=1'-0"

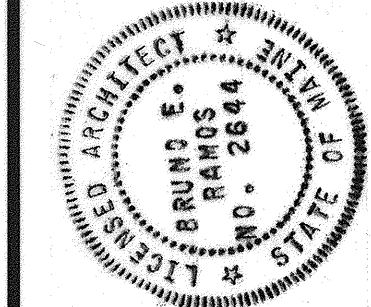
20



AN ASSOCIATION WITH:
CAROLAN PIERCE CONSULTING ENGINEERS
PERATROVICH, NOTTINGHAM & DRAGE
WINTON SCOTT ARCHITECTS
HALEY & ALDRICH

STATE OF MAINE
DEPARTMENT OF TRANSPORTATION
PROJECT NUMBER 009215.00

PIN
009215.00



PROJ. MANAGER	PAUL POTTLE	DATE	
DESIGN-DETAILED		SIGNATURE	<i>BR</i>
CHECKED-REVIEWED		P. LICENSE NUMBER	ARC 2644
DESIGN-DETAILED2		DATE	10/18/2004
DESIGN-DETAILED3		REVISIONS 1	
REVISIONS 1		REVISIONS 2	
REVISIONS 2		REVISIONS 3	
REVISIONS 3		REVISIONS 4	
REVISIONS 4		FIELD CHANGES	

CITY OF PORTLAND
OCEAN GATEWAY PHASE 1

RESTROOMS ELEVATION

A901-T