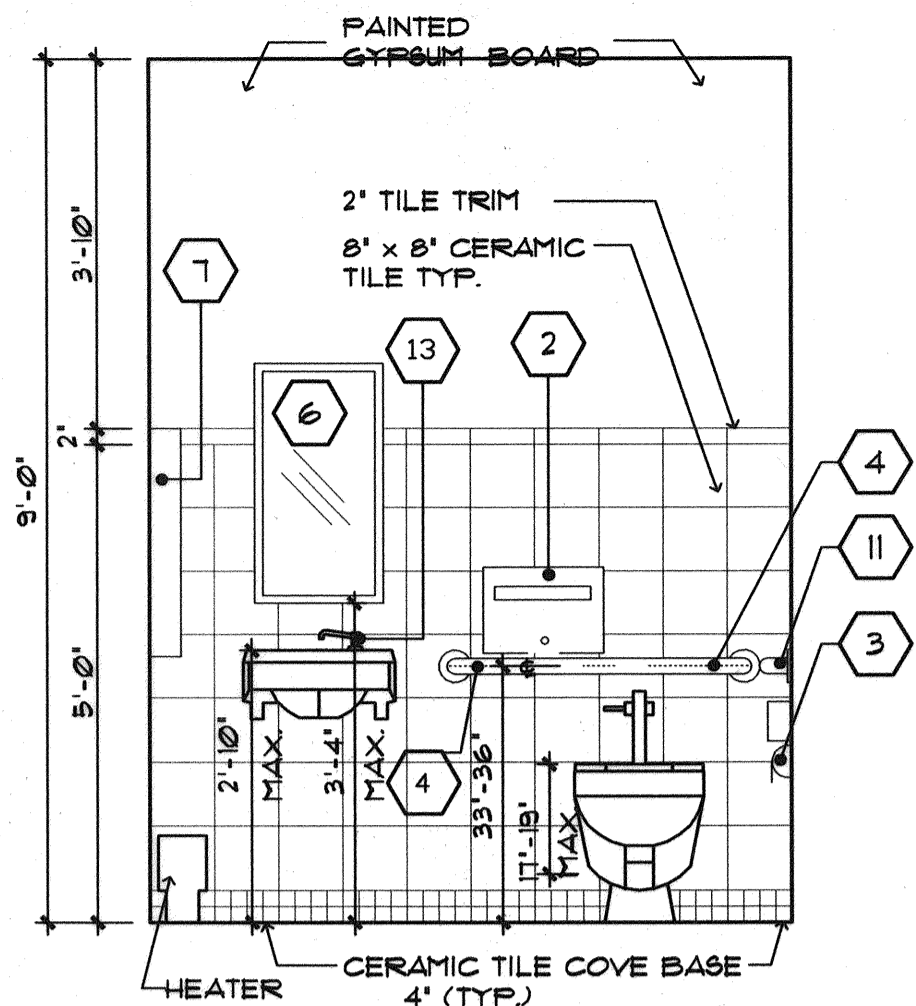
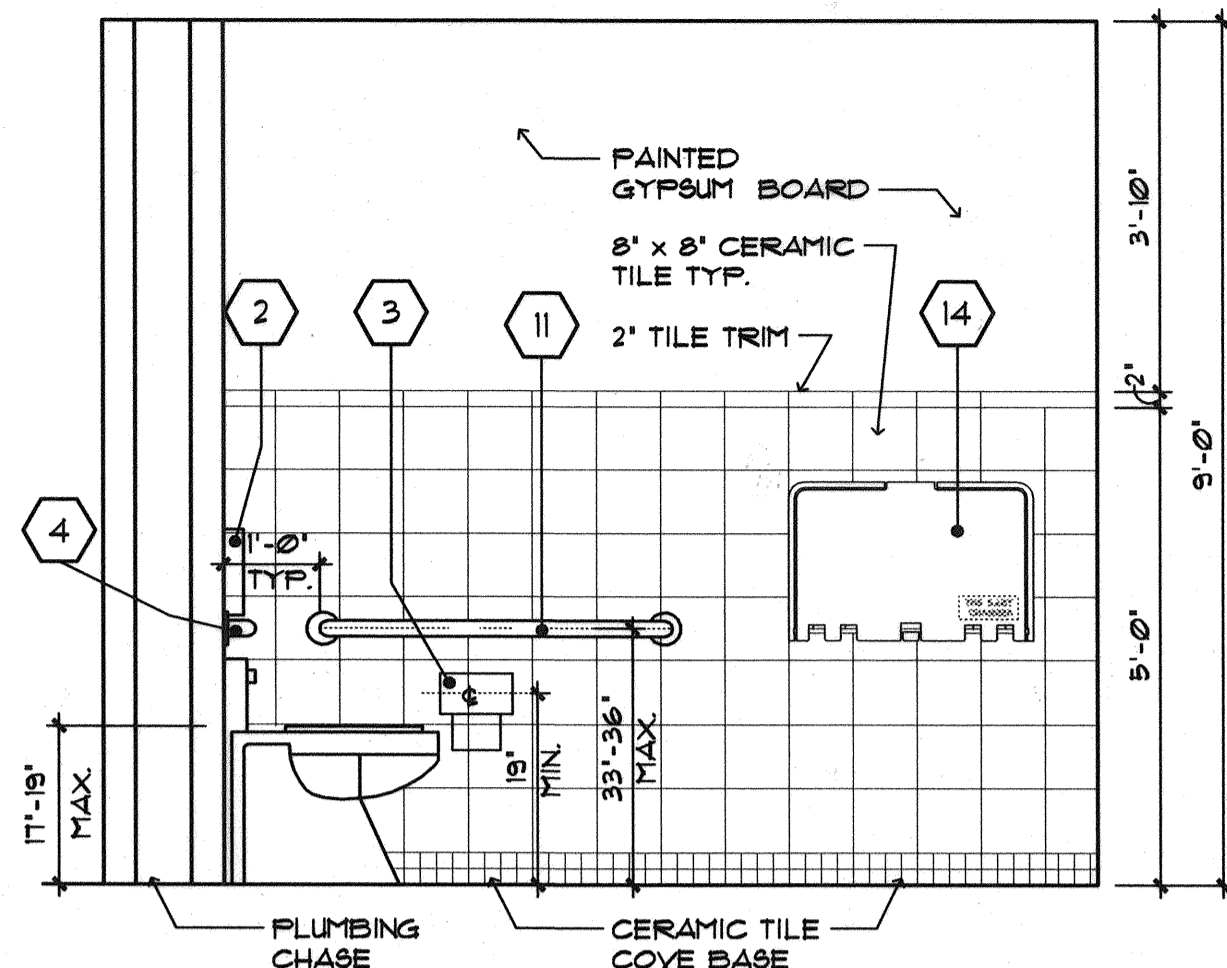


Filename: \\Server1\projects\02-0818 Maine Int. Ferry Terminal\PHASE 1\Architecture\FINAL CONSTRUCTION DOCUMENTS\TERMINAL BUILDING\20343802-T-A900.dwg, Oct.07, 2004 - 6:13pm



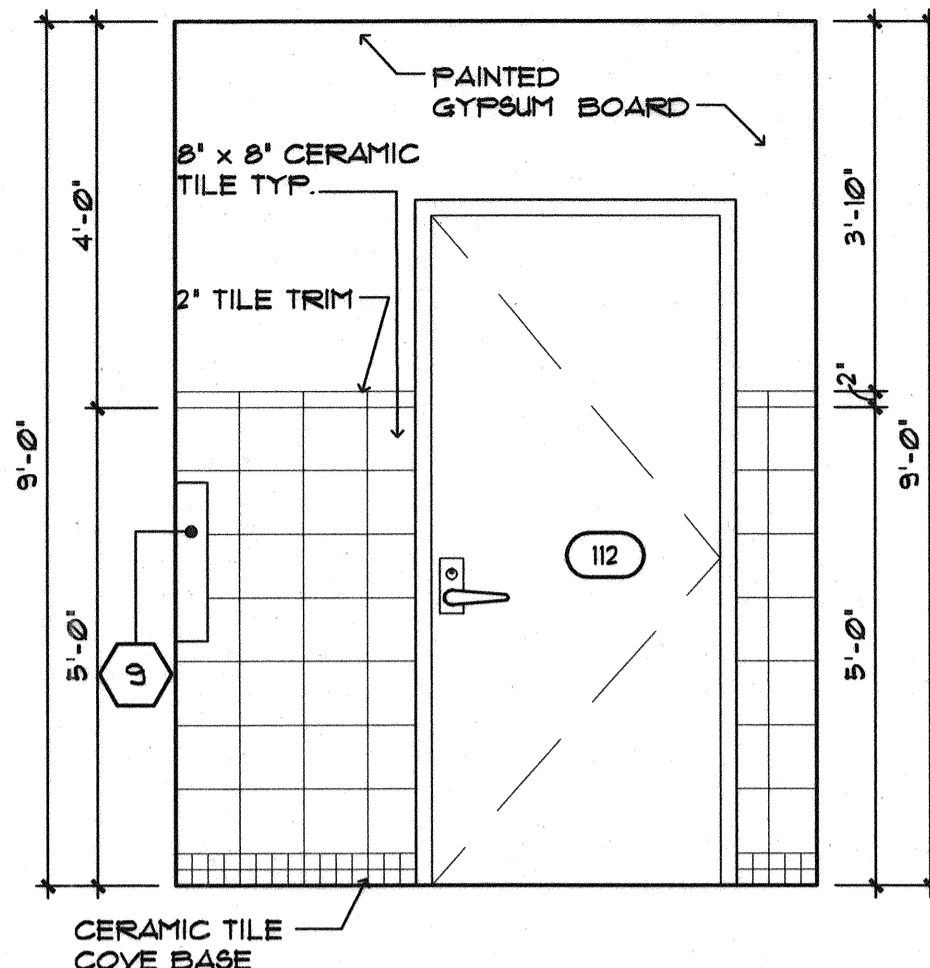
**UNISEX RESTROOM
ELEVATION 109**
SCALE: 1/2"=1'-0"

1



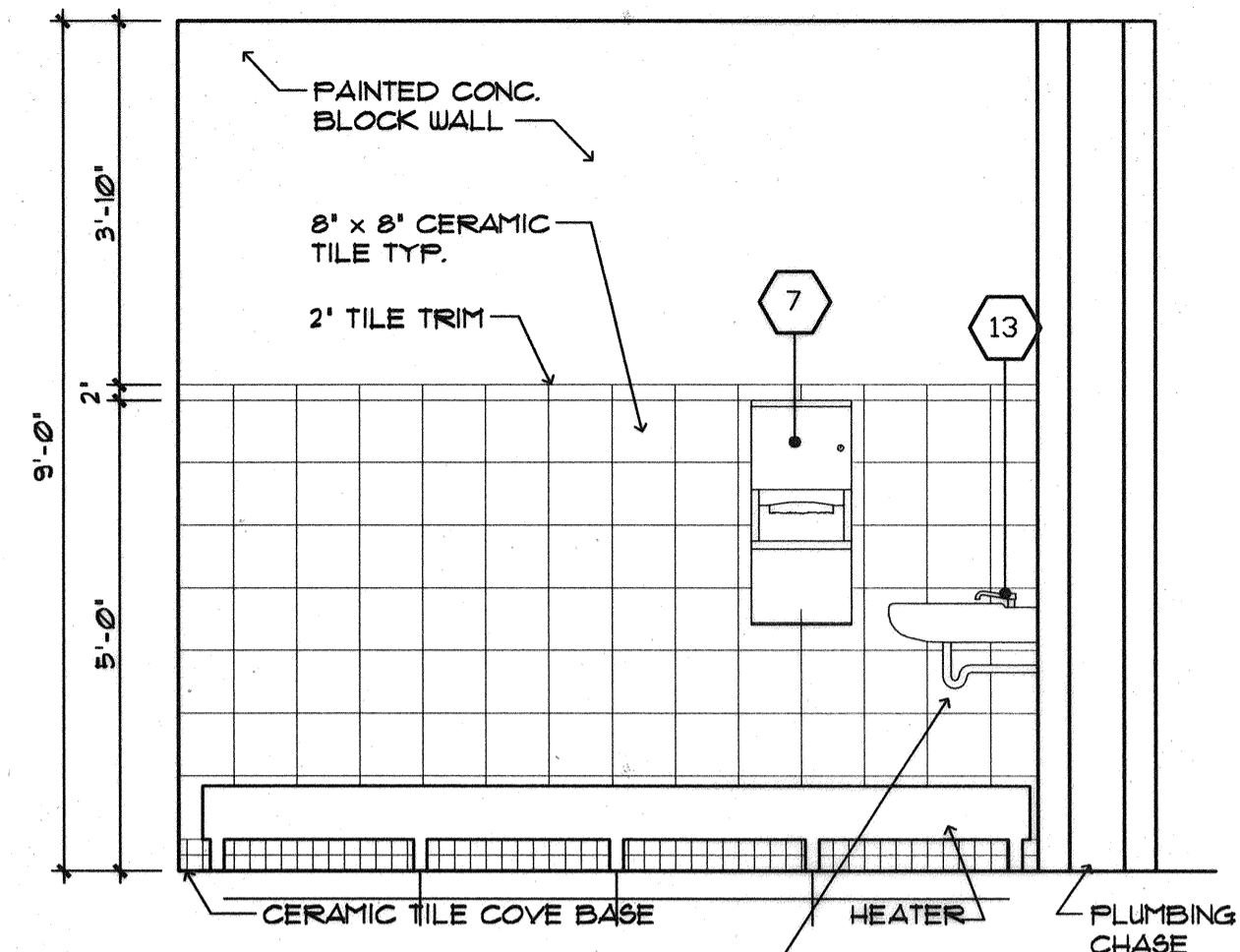
**UNISEX RESTROOM
ELEVATION**
SCALE: 1/2"=1'-0"

2



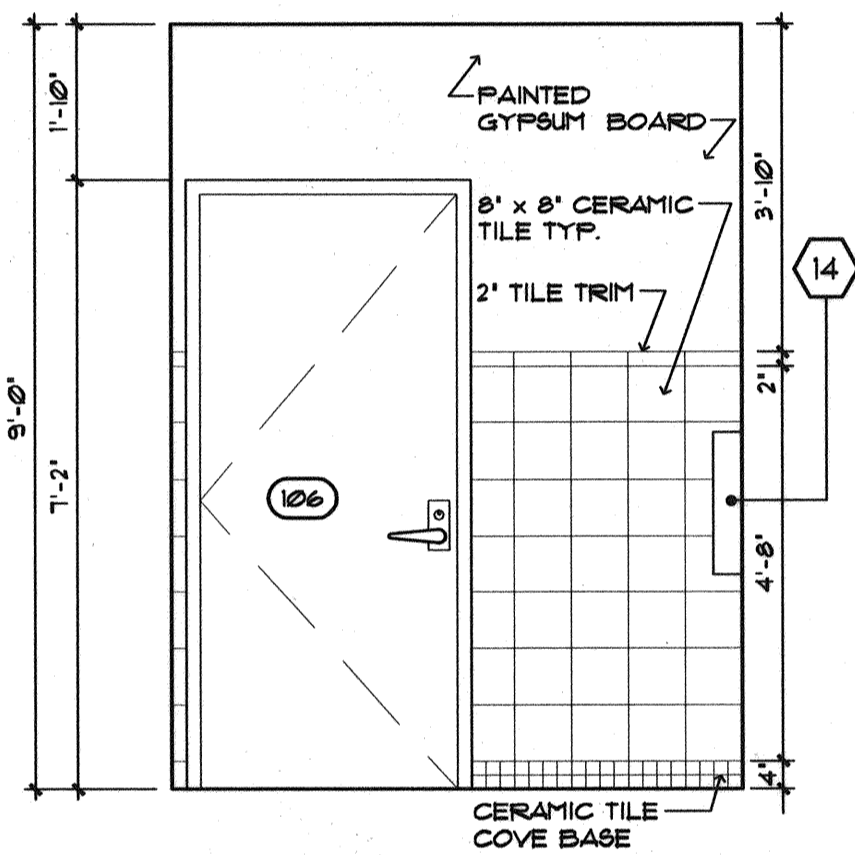
**UNISEX RESTROOM
ELEVATION**
SCALE: 1/2"=1'-0"

3



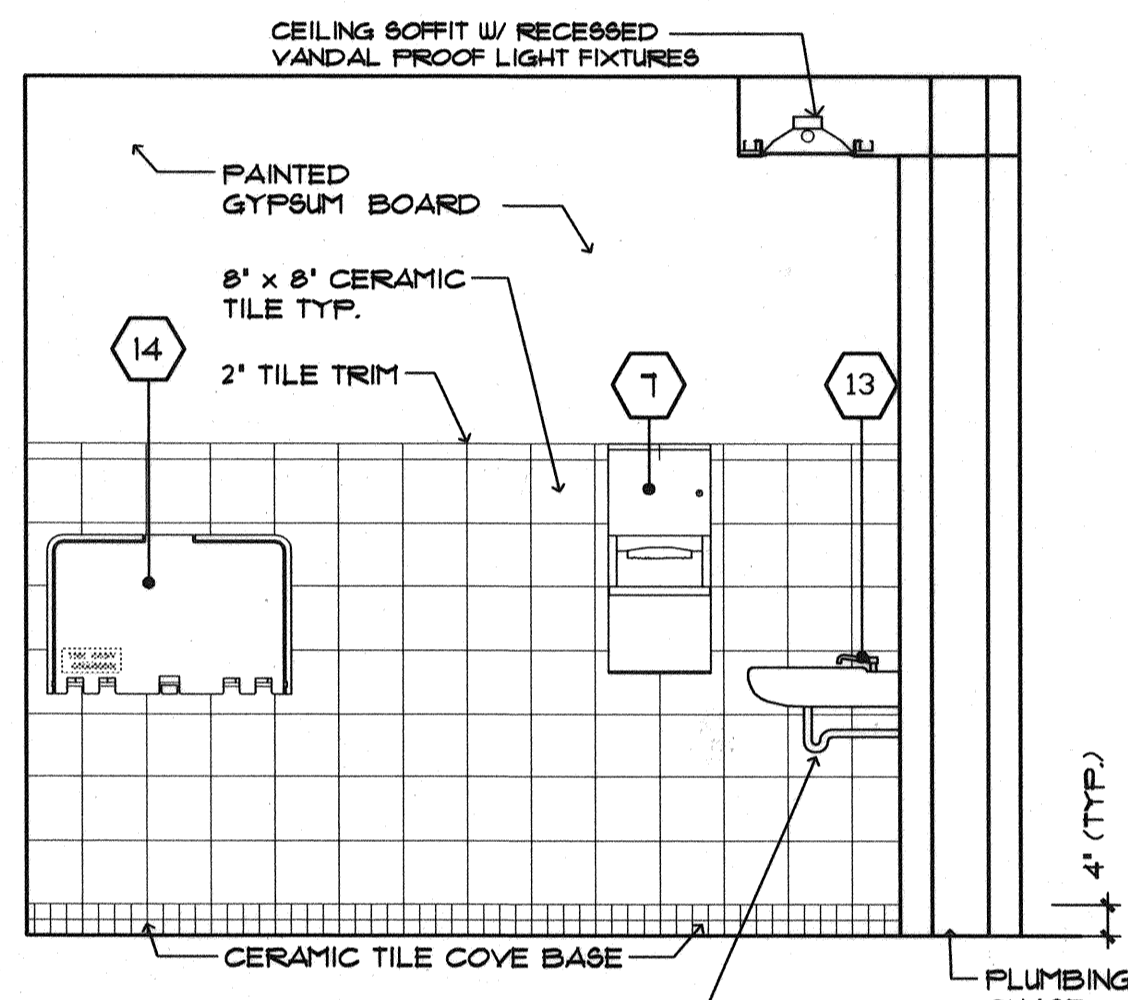
**UNISEX RESTROOM
ELEVATION**
SCALE: 1/2"=1'-0"

4



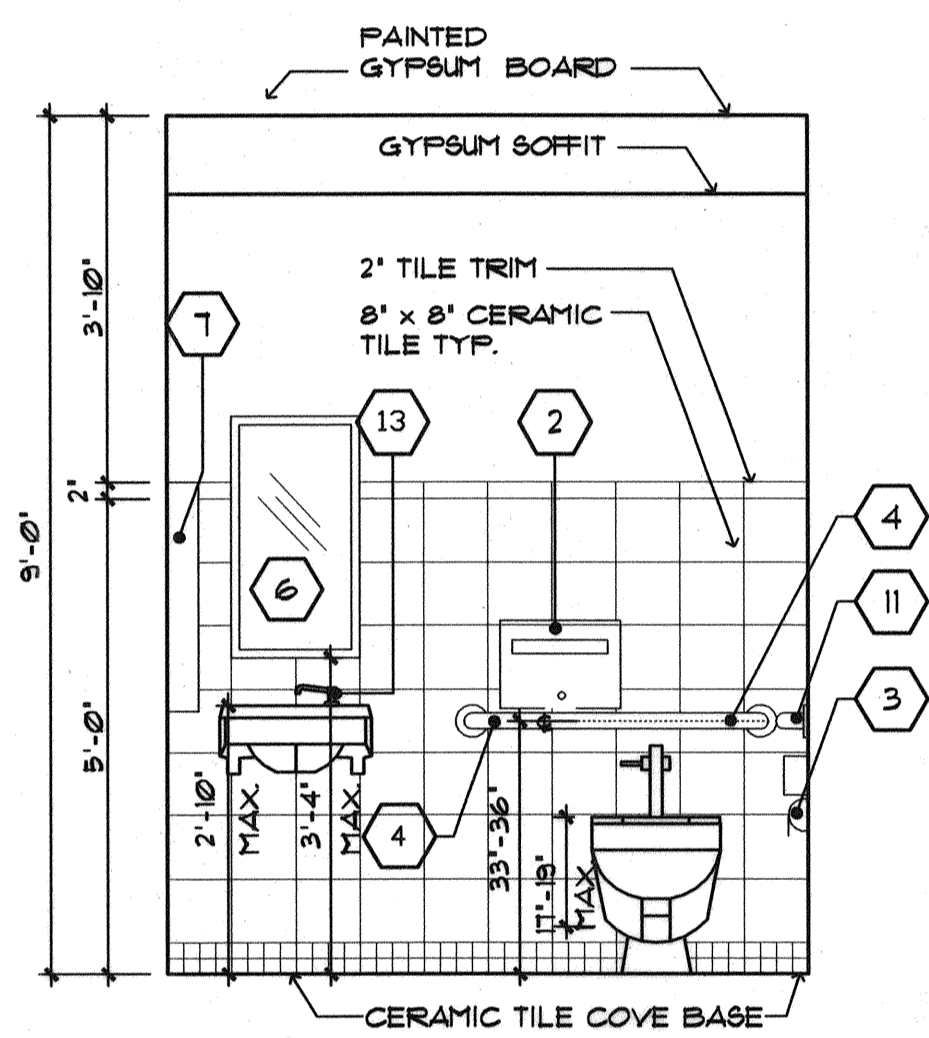
**UNISEX RESTROOM
ELEVATION 104**
SCALE: 1/2"=1'-0"

5



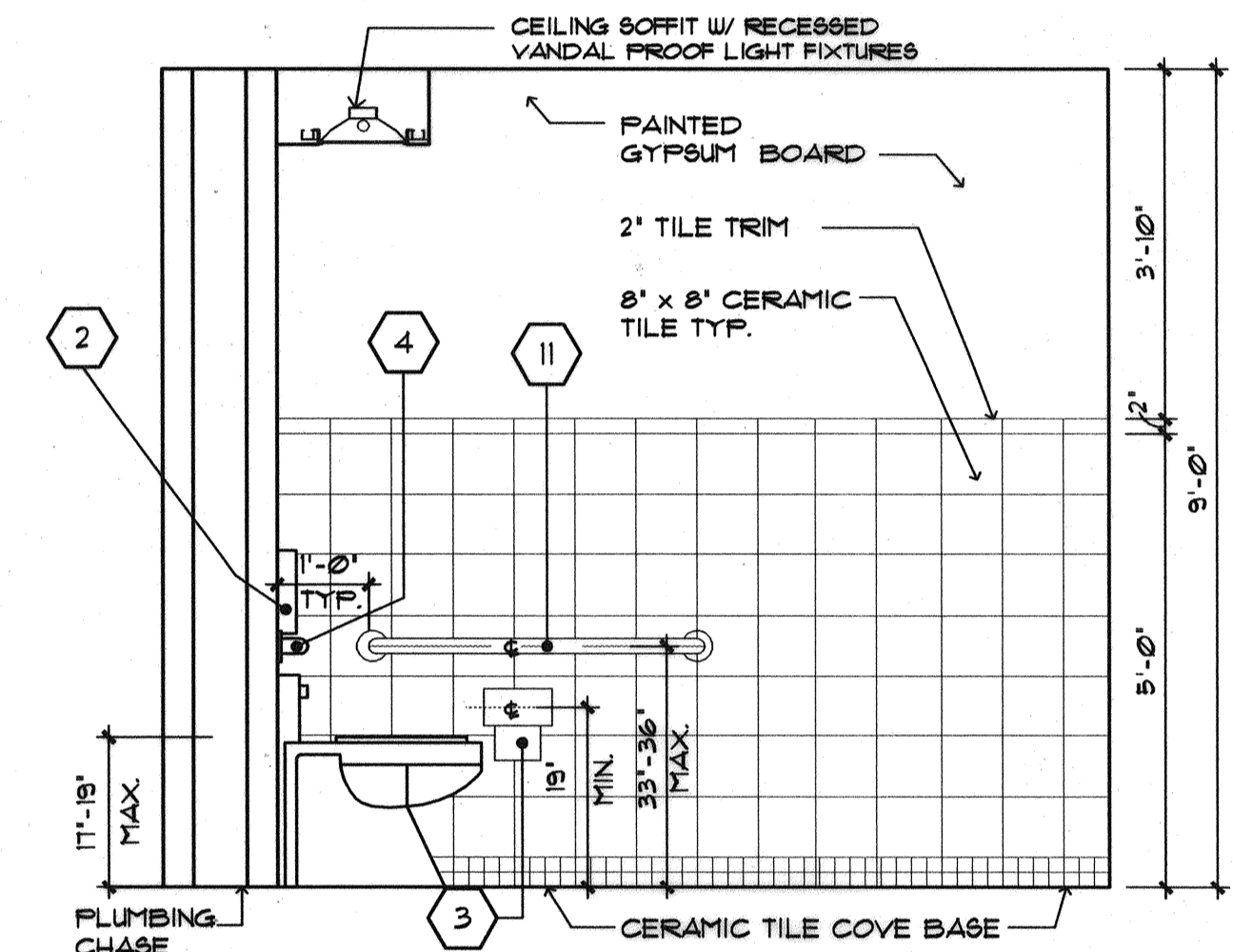
**UNISEX RESTROOM
ELEVATION**
SCALE: 1/2"=1'-0"

6



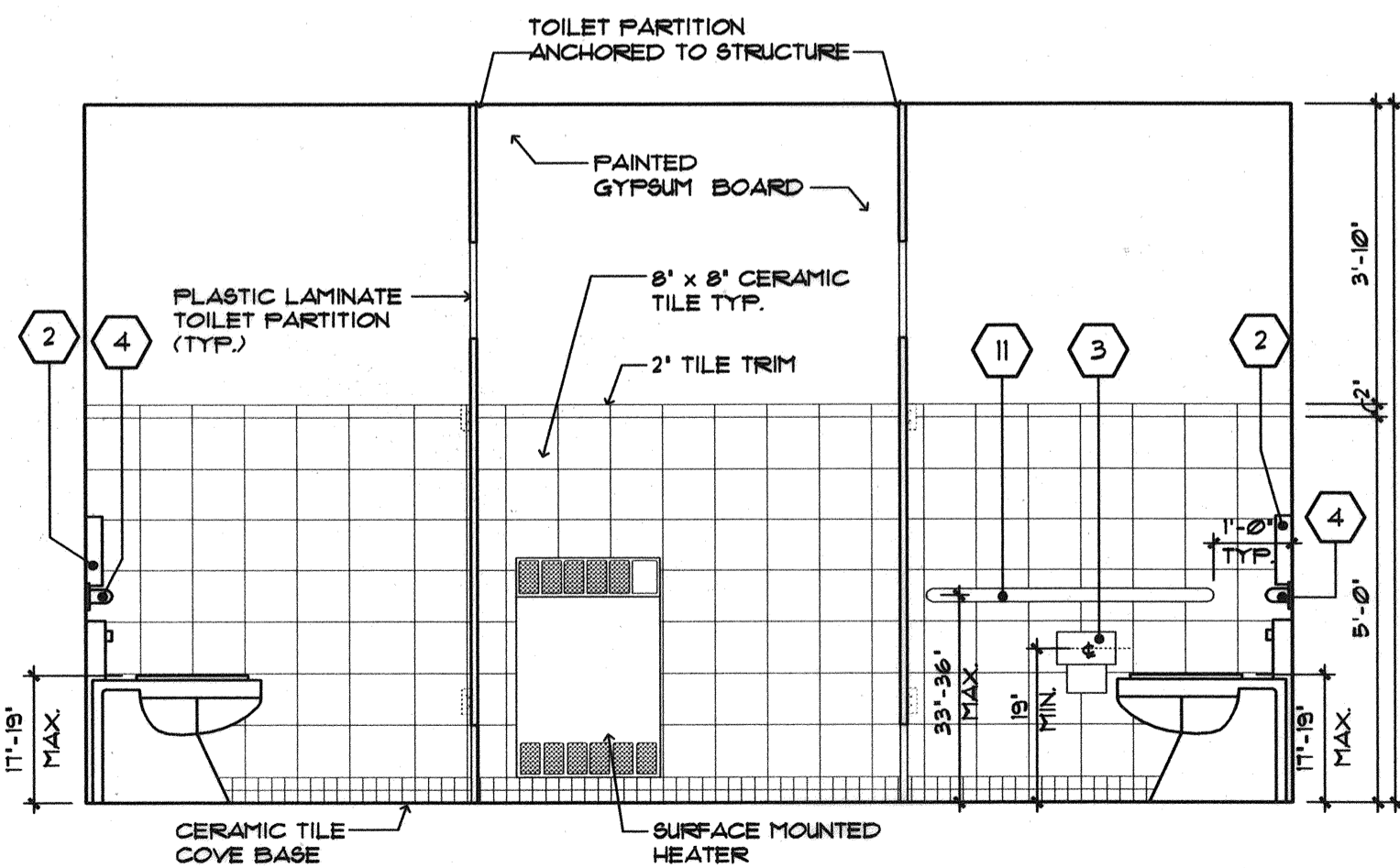
**UNISEX RESTROOM
ELEVATION**
SCALE: 1/2"=1'-0"

7



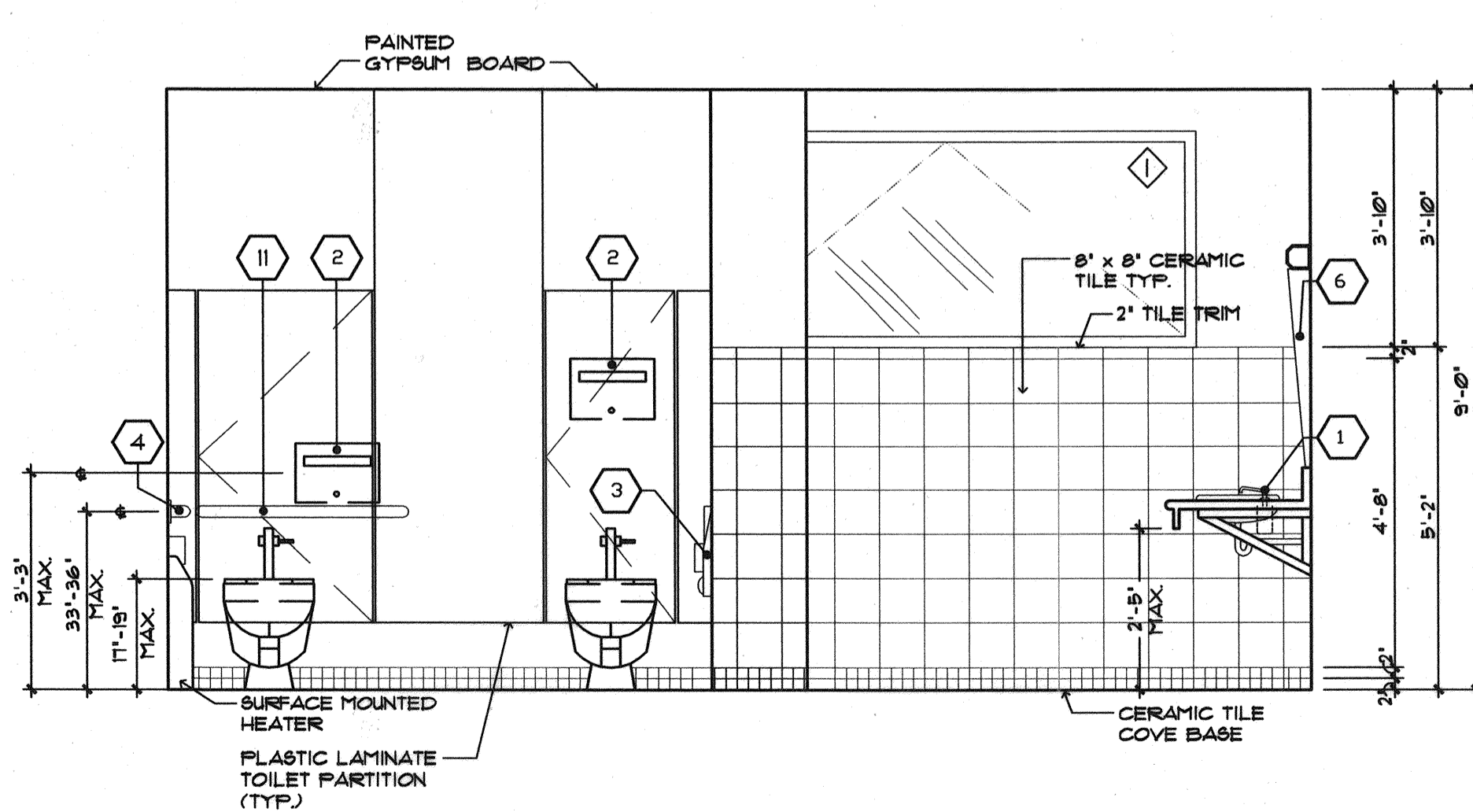
**UNISEX RESTROOM
ELEVATION**
SCALE: 1/2"=1'-0"

8



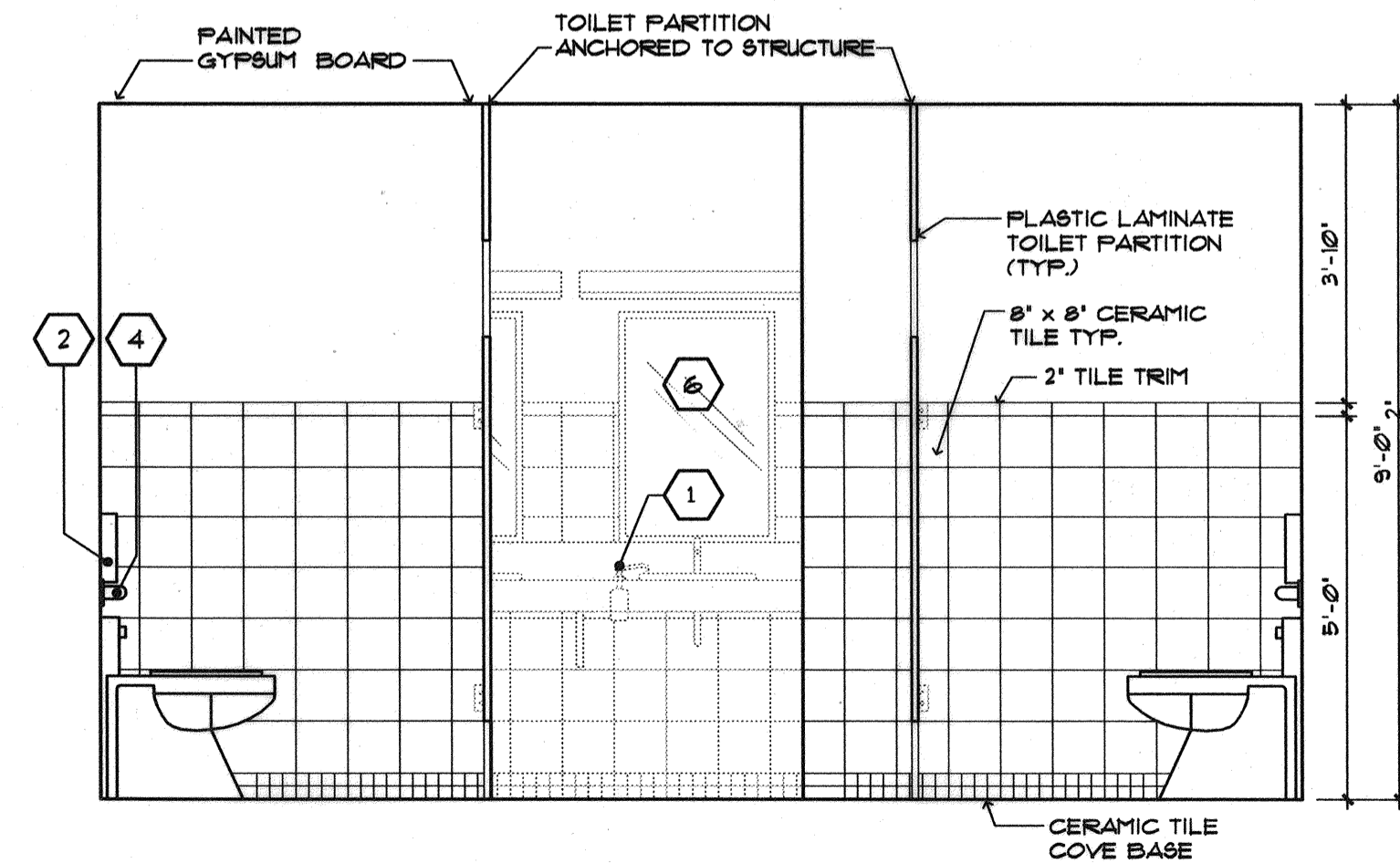
**WOMEN'S RESTROOM
ELEVATION**
SCALE: 1/2"=1'-0"

9



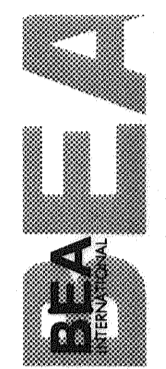
**WOMEN'S RESTROOM
ELEVATION**
SCALE: 1/2"=1'-0"

10



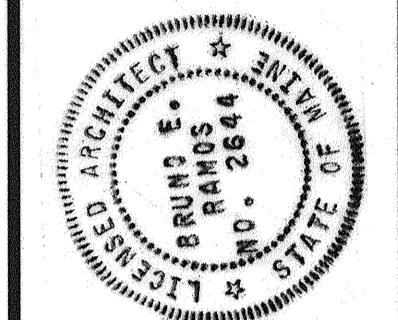
**WOMEN'S RESTROOM
ELEVATION**
SCALE: 1/2"=1'-0"

11



IN ASSOCIATION WITH:
CONSTRUCTION CONSULTING ENGINEERS
PERMITTING CONSULTANTS & PRICE
WINTON SCOTT ARCHITECTS
HALEY & ALDRICH

STATE OF MAINE
DEPARTMENT OF TRANSPORTATION
PROJECT NUMBER 009215.00
PIN 009215.00



PROJ. MANAGER	PAUL POTTLE
DESIGN-DETAILED	
CHECKED-REVIEWED	
DESIGN-2-DETAILED2	
DESIGN-3-DETAILED3	
REVISIONS 1	
REVISIONS 2	
REVISIONS 3	
REVISIONS 4	
FIELD CHANGES	

CITY OF PORTLAND
OCEAN GATEWAY PHASE 1
RESTROOMS ELEVATION

A900-T
164 OF 288