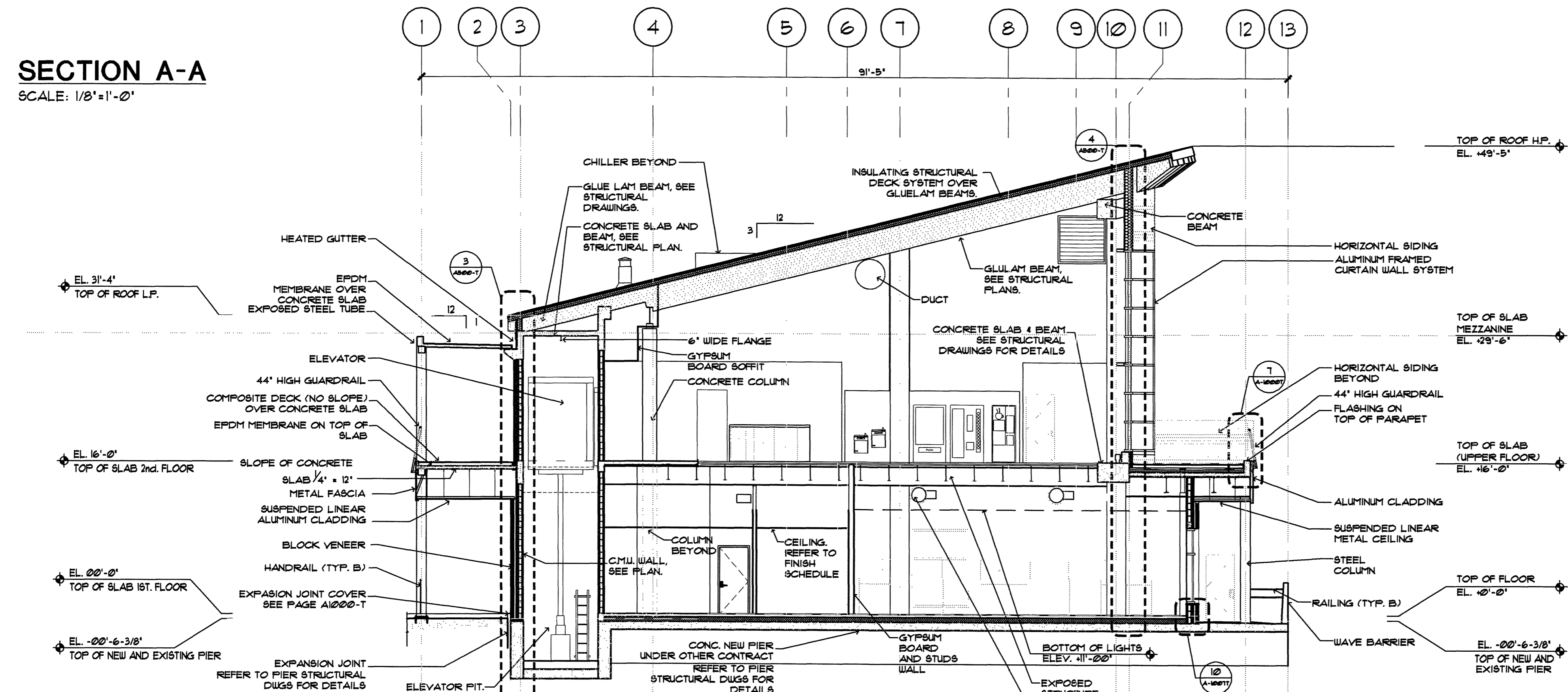


**SECTION A-A**  
SCALE: 1/8"=1'-0"



**SECTION B-B**  
SCALE: 1/8"=1'-0"

IN ASSOCIATION WITH:  
**BEA**  
 GORRILL-PALMER CONSULTING ENGINEERS  
 PERATROVICH, NOTTINGHAM, & DRAGE  
 WINTON SCOTT ARCHITECTS  
 PALEY & ABRIGHI

STATE OF MAINE  
 DEPARTMENT OF TRANSPORTATION  
 PROJECT NUMBER 009215.00  
 PIN  
 009215.00

**BEA**  
 REGISTERED ARCHITECT  
 STATE OF MAINE  
 P. LICENCE NUMBER  
 4721/05  
 DATE  
 10/8/2004

PROJ. MANAGER	DATE	BY	REVISIONS	FIELD CHANGES
PAUL POTTE				
DESIGN-DETAILED				
CHECKED-REVIEWED				
DESIGN-DETAILED				
DESIGN-DETAILED				
REVISIONS 1				
REVISIONS 2				
REVISIONS 3				
REVISIONS 4				
FIELD CHANGES				

CITY OF PORTLAND  
 OCEAN GATEWAY PHASE 1  
 SECTIONS

A304-T  
 141 OF 288