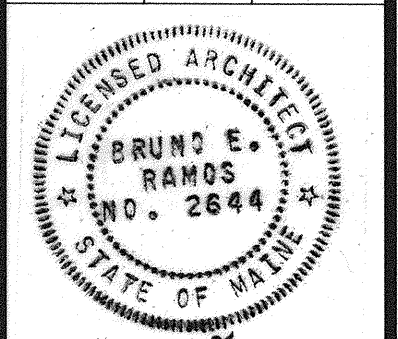


Filename: Wserver1\projects\02-0818 Maine Int Ferry Terminal\PHASE 1\Architecture\FINAL CONSTRUCTION DOCUMENTS\TERMINAL BUILDING\20343802-T-A301.dwg, Oct 07, 2004 - 11:46am

IN ASSOCIATION WITH:  
**BEA**  
 GORRILL-PALMER CONSULTING ENGINEERS  
 PERATROVICH, NOTTINGHAM, & DRAGE  
 WINTON SCOTT ARCHITECTS  
 HALEY & ALDRICH

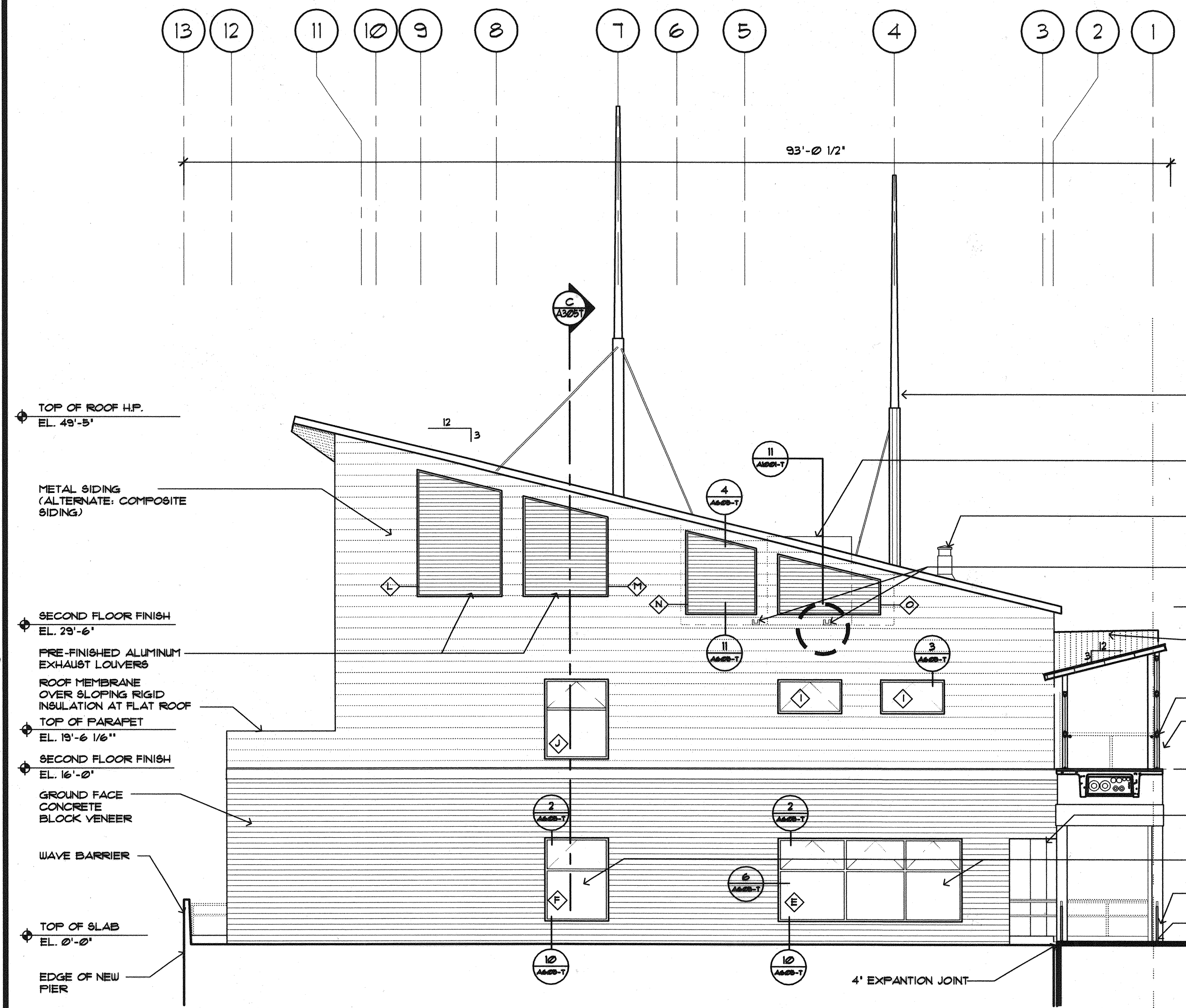
STATE OF MAINE  
 DEPARTMENT OF TRANSPORTATION  
 PROJECT NUMBER 009215.00  
 PIN  
 009215.00



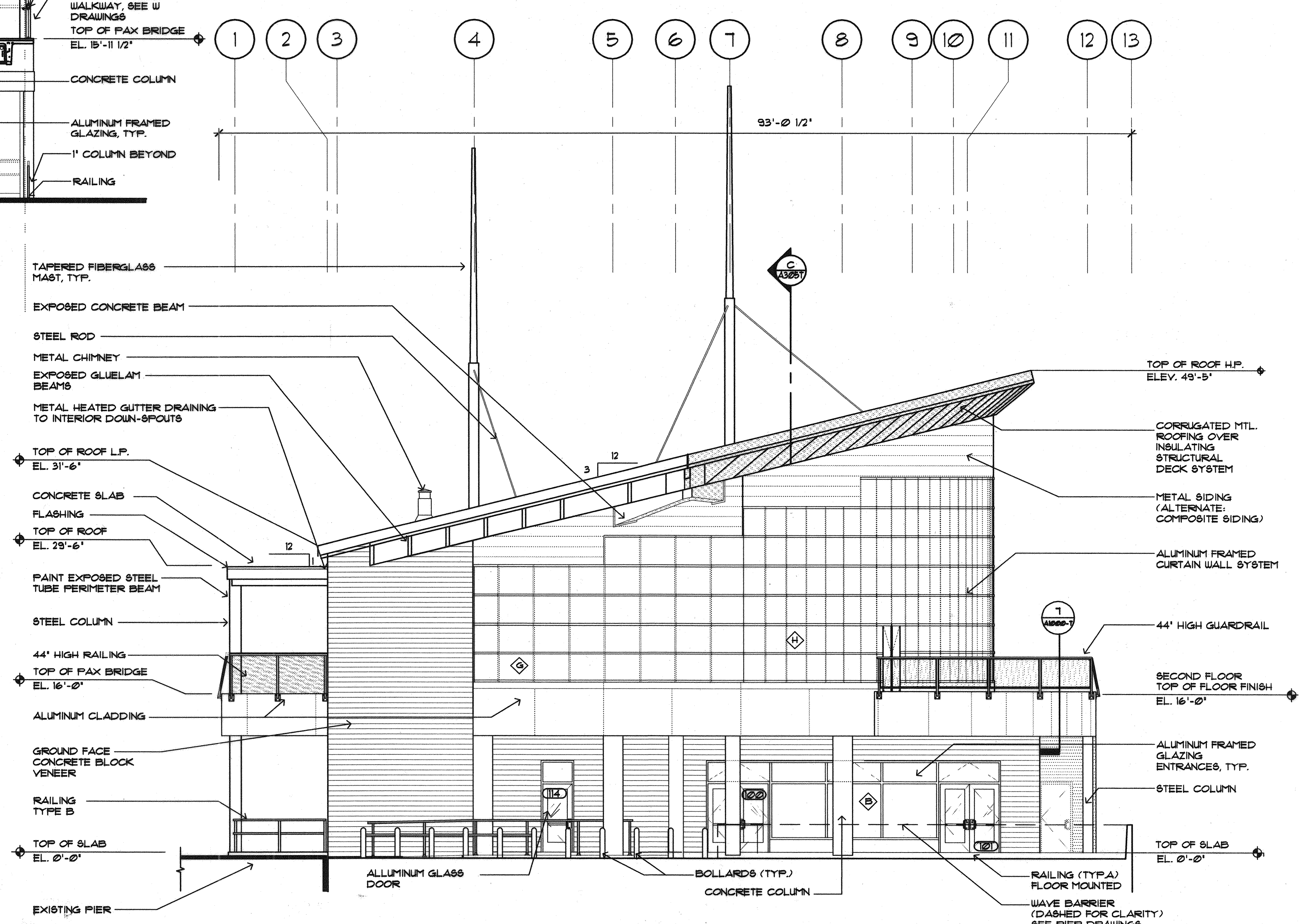
PROJ. MANAGER	PAUL POTTE
DESIGN-DETAILED	
CHECKED-REVIEWED	
DESIGN-DETAILED	
REVISIONS 1	
REVISIONS 2	
REVISIONS 3	
REVISIONS 4	
FIELD CHANGES	

CITY OF PORTLAND  
 OCEAN GATEWAY PHASE 1  
 EXTERIOR ELEVATIONS

A301-T  
 138 OF 288



**NORTH ELEVATION**  
 SCALE: 1/8"=1'-0"



**SOUTH ELEVATION**  
 SCALE: 1/8"=1'-0"