

- LEGEND:**
- (PL) OCCUPANT LOAD / AREA
 - (TD) TRAVEL DISTANCE
 - (SF) GROSS SQUARE FOOT AREA
 - STAIR OR DOOR EXIT CAPACITY
 - (A) ASSEMBLY (WAITING, CONCENTRATED W/NOT FIXED CHAIRS) USE @ 1 SF/PERSON
 - (AC) ACCESSORY USE ('NO OCCUPANCY')
 - (M) MECHANICAL @ 300 SF/PERSON
 - (O) OFFICE USE @ 100 SF/PERSON

- (F) FIRE-RATED DOOR AND FRAME 'B' LABEL 1 1/2' HRS.
- FIRE RATED WALL / PARTITION (HRS. AS NOTED)
- FE-1 SURFACE MOUNTED FIRE EXTINGUISHER & CABINET ABC TYPE 2-A RATED
- FE-2 SEMI-RECESSED FIRE EXTINGUISHER & CABINET ABC TYPE 2-A RATED
- (E) INTERNALLY ILLUMINATED EXIT SIGN

180 TOTAL MAX. EXIT CAPACITY ALLOWABLE

CLEAR WIDTH OF DOOR, RAMP OR STAIR IN INCHES

NOTE:
ALL LOAD FACTORS ARE TAKEN FROM THE 2003 BOCA NATIONAL BUILDING CODE (UNLESS NOTED OTHERWISE)

NOTE:
ONE FIRE EXTINGUISHER SHALL BE PROVIDED FOR EVERY 3000 SQ. FT. WITH A MAXIMUM DISTANCE OF TRAVEL NOT EXCEEDING 15'-0". TOP OF EXTINGUISHER NOT TO EXCEED 5'-0" ABOVE FLOOR FINISH.

ALL FIRE EXTINGUISHERS PROVIDED WILL BE A MIN 2A 10BC AND SHALL BE RECESSED IN WALL CABINETS.

CODE SUMMARY

BOCA BUILDING CODE 1999 AND NFPA

OCCUPANCY GROUP GROUP A3 - ASSEMBLY, TERMINALS.

BUILDING TYPE:
TYPE 3B

EXTERIOR WALLS
LOADBEARING: 2 HRS. FIRE RATED (F.R.)
NON LOADBEARING: 0 HRS. F.R.

FIRE & PARTY WALLS: 2 HRS. F.R.

FIRE ENCLOSURE OF EXITS: 2 HRS. F.R.

SHAFTS (INCLUDE ELEVATOR): 2 HRS. F.R.

INTERIOR LOADBEARING WALLS, LOADBEARING PARTITION COLUMNS, GIRDERS, TRUSSES (OTHER THAN ROOF TRUSSES) AND FRAMING
SUPPORTING MORE THAN ONE FLOOR: 0 HRS. F.R.
SUPPORTING ONE ROOF ONLY OR A ROOF: 0 HR. F.R.

STRUCTURAL MEMBER SUPPORTING WALL
0 HR. F.R.

FLOOR CONSTRUCTION INCLUD. BEAMS
0 HR. F.R.

ROOF CONSTRUCTION INC. BEAMS, TRUSSES, FRAMING AND ROOF DECK
15' OR LESS HEIGHT OF LOWER MEMBER: 0 HR. F.R.
MORE THAN 15' BUT LESS THAN 20': 0 HR. F.R.
MORE THAN 20': 0 HR.

EGRESS WIDTHS: NFPA (MOST RESTRICTIVE)

DOORS: 180 PERSONS / EGRESS UNIT (SIMPLE DOOR) 2 INCH/PERSON

360 PERSONS / EGRESS UNIT (DOUBLE DOOR) 2 INCH/PERSON

STAIRS: 3 INCH/PERSON

RAMP: 2 INCH/PERSON

SECOND FLOOR LIFE SAFETY PLAN
SCALE: 1/8" = 1'-0"

OCCUPATION TOTALS:
1021 OCCUPANTS @ PIER FLOOR
804 OCCUPANTS @ SECOND FLOOR
3 OCCUPANTS @ MEZZANINE FLOOR
1828 TOTAL OCCUPANTS

ALLOWABLE AREAS: AREAS OF BUILDINGS OVER ONE STORY.

8,400 sq.ft. x 20% (5063 BOCA) = 16,800 sq.ft.

ALLOWABLE HEIGHT: 30' + 20' (5042 BOCA) = 50'
2 LEVELS + 1 (5042 BOCA) = 3 FLOORS.

MAX. TRAVEL DIST.: 250'-0" SPRINKLERED

MAX. DEAD END: 20 FEET

No. OF EXITS REQD': 3 EXITS (OCCUPANT LOAD: 501-1000)

DISTANCE BETWEEN EXITS REQD': D2 > D1 / 3 (153'5" / 3 < 10'6")
W/AUTOMATIC SPRINKLER SYSTEM

THIRD FLOOR LIFE SAFETY PLAN
SCALE: 1/8" = 1'-0"

MECHANICAL ROOM 320
EXTERIOR CHILLER DECK
FLOOR ASSEMBLY 2 HR. FIRE RATED UL-G103

2 HR. FIRE RATED WALL UL-U419
2 HR. FIRE RATED WALL IN STAIR ROOM UL-U419

2 HR. FIRE RATED WALL UL-U419

2 HR. FIRE RATED WALL UL-U419

2 HR. FIRE RATED WALL UL-U419

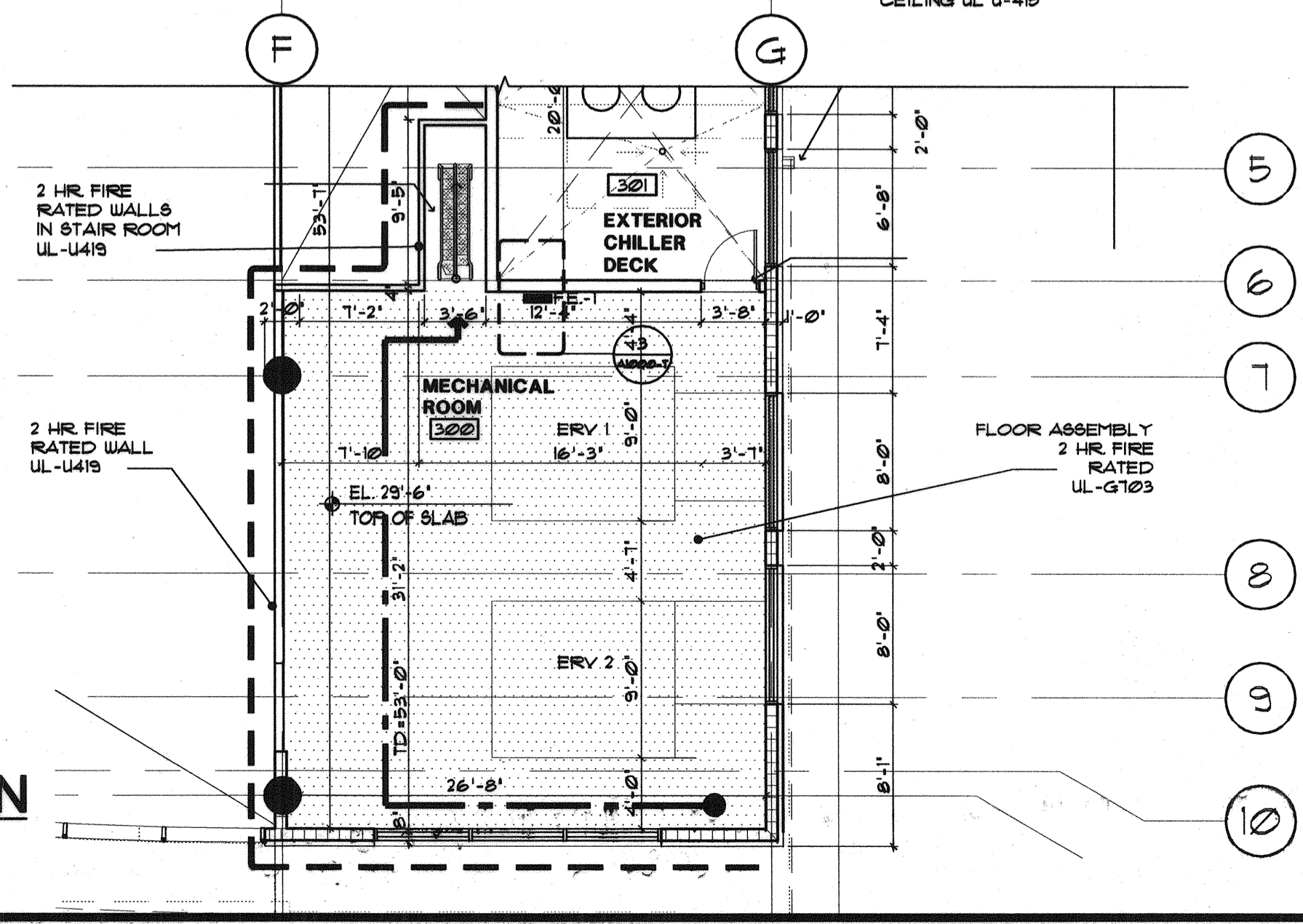
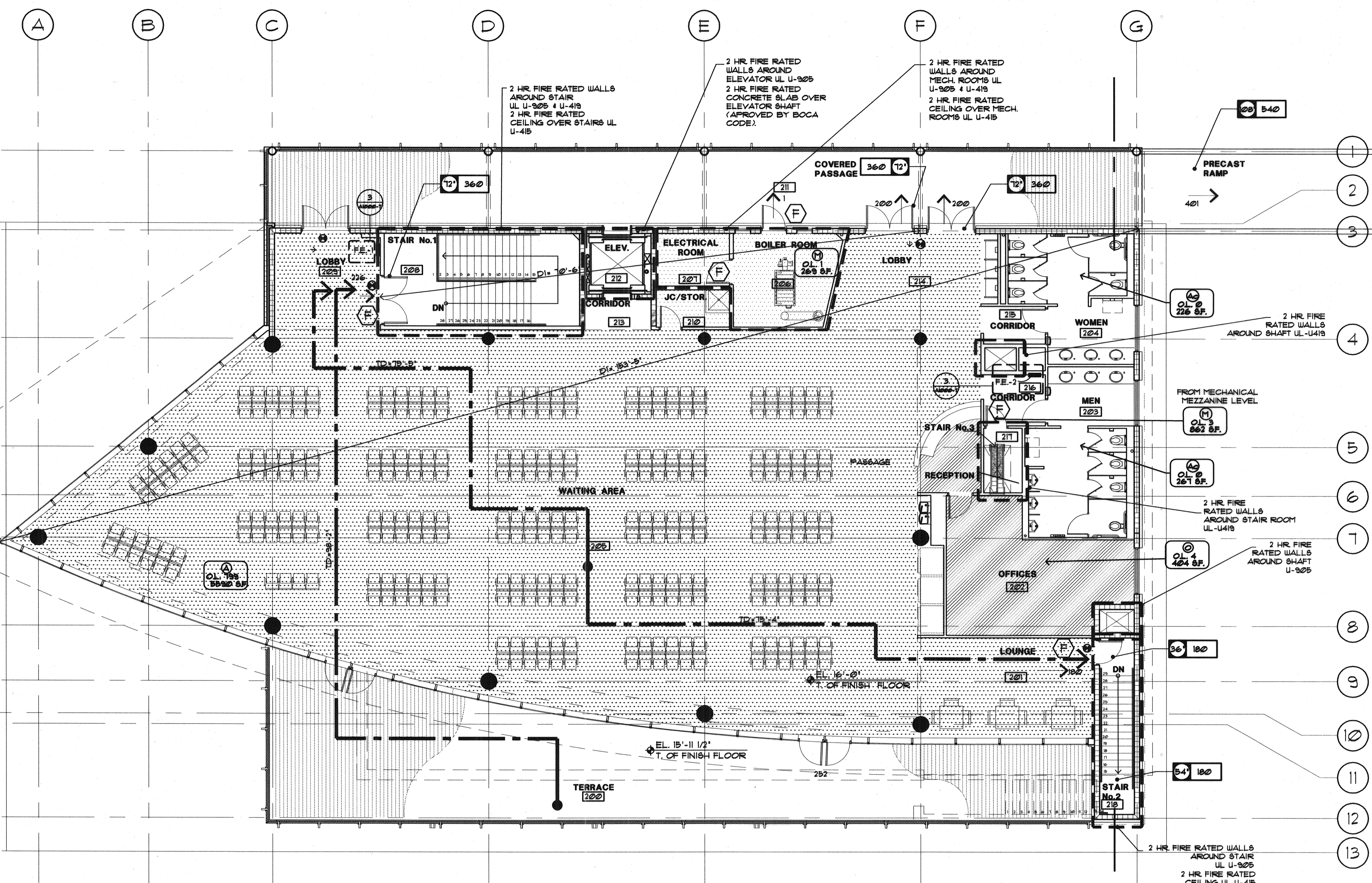
2 HR. FIRE RATED WALL UL-U419

2 HR. FIRE RATED WALL UL-U419

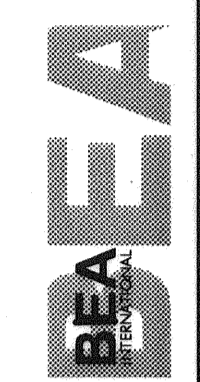
2 HR. FIRE RATED WALL UL-U419

2 HR. FIRE RATED WALL UL-U419

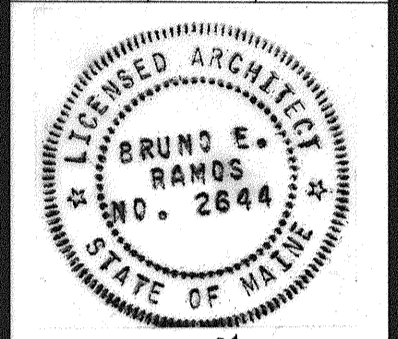
2 HR. FIRE RATED WALL UL-U419



IN ASSOCIATION WITH:
GORELL PALMER CONSULTING ENGINEERS
PERATROVICH, NOTTINGHAM, & DRAGE
WINTON SCOTT ARCHITECTS
HALEY & ALDRICH



STATE OF MAINE
DEPARTMENT OF TRANSPORTATION
PROJECT NUMBER 009215.00



PROJ. MANAGER PAUL POTTLE	DATE
DESIGN-DETAILED	SIGNATURE
CHECKED-REVIEWED	P. LICENCE NUMBER
DESIGN-DETAILED	ARC 2644
REVISIONS 1	DATE
REVISIONS 2	10/8/2004
REVISIONS 3	
REVISIONS 4	
FIELD CHANGES	

CITY OF PORTLAND
OCEAN GATEWAY PHASE 1
LIFE SAFETY PLAN

A102-T