

LEGEND:

- ⊙ OCCUPANT LOAD / AREA
- ⊙ TRAVEL DISTANCE
- ⊙ GROSS SQUARE FOOT AREA
- STAIR OR DOOR EXIT CAPACITY
- ⊙ ASSEMBLY (WAITING, CONCENTRATED W/NOT FIXED CHAIRS) USE @ 1 SF/PERSON
- ⊙ ASSEMBLY (WAITING, CONCENTRATED) USE @ 3 SF/PERSON
- ⊙ ACCESSORY USE ('NO OCCUPANCY')
- ⊙ OFFICE USE @ 100 SF/PERSON
- ⊙ MECHANICAL @ 300 SF/PERSON
- ⊙ STORAGE USE @ 300 SF/PERSON
- ⊙ FIRE-RATED DOOR AND FRAME 'B' LABEL 1 1/2 HRS.
- FIRE RATED WALL / PARTITION (HRS. AS NOTED)
- FE-1 SURFACE MOUNTED FIRE EXTINGUISHER 4 CABINET ABC TYPE 2-A RATED
- FE-2 SEMI-RECESSED FIRE EXTINGUISHER 4 CABINET ABC TYPE 2-A RATED
- ⊙ INTERNALLY ILLUMINATED EXIT SIGN

CLEAR WIDTH OF DOOR, RAMP OR STAIR IN INCHES
 TOTAL MAX. EXIT CAPACITY ALLOWABLE

NOTE:

ALL LOAD FACTORS ARE TAKEN FROM THE 2003 BOCA NATIONAL BUILDING CODE (UNLESS NOTED OTHERWISE)

NOTE:
 ONE FIRE EXTINGUISHER SHALL BE PROVIDED FOR EVERY 3000 SQ. FT. WITH A MAXIMUM DISTANCE OF TRAVEL NOT EXCEEDING 15'-0". TOP OF EXTINGUISHER NOT TO EXCEED 5'-0" ABOVE FLOOR FINISH.

ALL FIRE EXTINGUISHERS PROVIDED WILL BE A MIN 2A 10BC.

CODE SUMMARY

BOCA BUILDING CODE 2003 AND NFPA

OCCUPANCY GROUP GROUP A3 - ASSEMBLY, TERMINALS, L PIER

BUILDING TYPE: TYPE 3B

- EXTERIOR WALLS LOADBEARING: 2 HRS. FIRE RATED (F.R.)
- NON LOADBEARING: 0 HRS. F.R.
- FIRE 4 PARTY WALLS: 2 HRS. F.R.
- FIRE ENCL. OF EXITS: 2 HRS. F.R.
- SHAFTS (INCLUDE ELEVATORS): 2 HRS. F.R.
- INTERIOR LOADBEARING WALLS, LOADBEARING PARTITION, COLUMNS, GIRDERS, TRUSSES (OTHER THAN ROOF TRUSSES) AND FRAMING SUPPORTING MORE THAN ONE FLOOR: 0 HRS. F.R.
- SUPPORTING ONE ROOF ONLY OR A ROOF: 0 HR. F.R.
- STRUCTURAL MEMBER SUPPORTING WALL: 0 HR. F.R.
- FLOOR CONSTRUCTION INCL. BEAMS: 0 HR. F.R.
- ROOF CONSTRUCTION INC. BEAMS, TRUSSES, FRAMING AND ROOF DECK: 15' OR LESS HEIGHT OF LOWER MEMBER: 0 HR. F.R. MORE THAN 15' BUT LESS THAN 20': 0 HR. F.R. MORE THAN 20': 0 HR.

EGRESS WIDTHS: NFPA (MOST RESTRICTIVE)

- DOORS: 100 PERSONS / EGRESS UNIT (SINGLE DOOR) 2 INCH./PERSON
- 360 PERSONS / EGRESS UNIT (DOUBLE DOOR) 2 INCH./PERSON
- STAIRS: 3 INCH./PERSON
- RAMP: 2 INCH./PERSON

ALLOWABLE AREAS: AREAS OF BUILDINGS OVER ONE STORY.

8,400 sq.ft. x 200% (506.3 BOCA) = 16,800 sq.ft.

ALLOWABLE HEIGHT: 30' + 20' (504.2 BOCA) = 50'

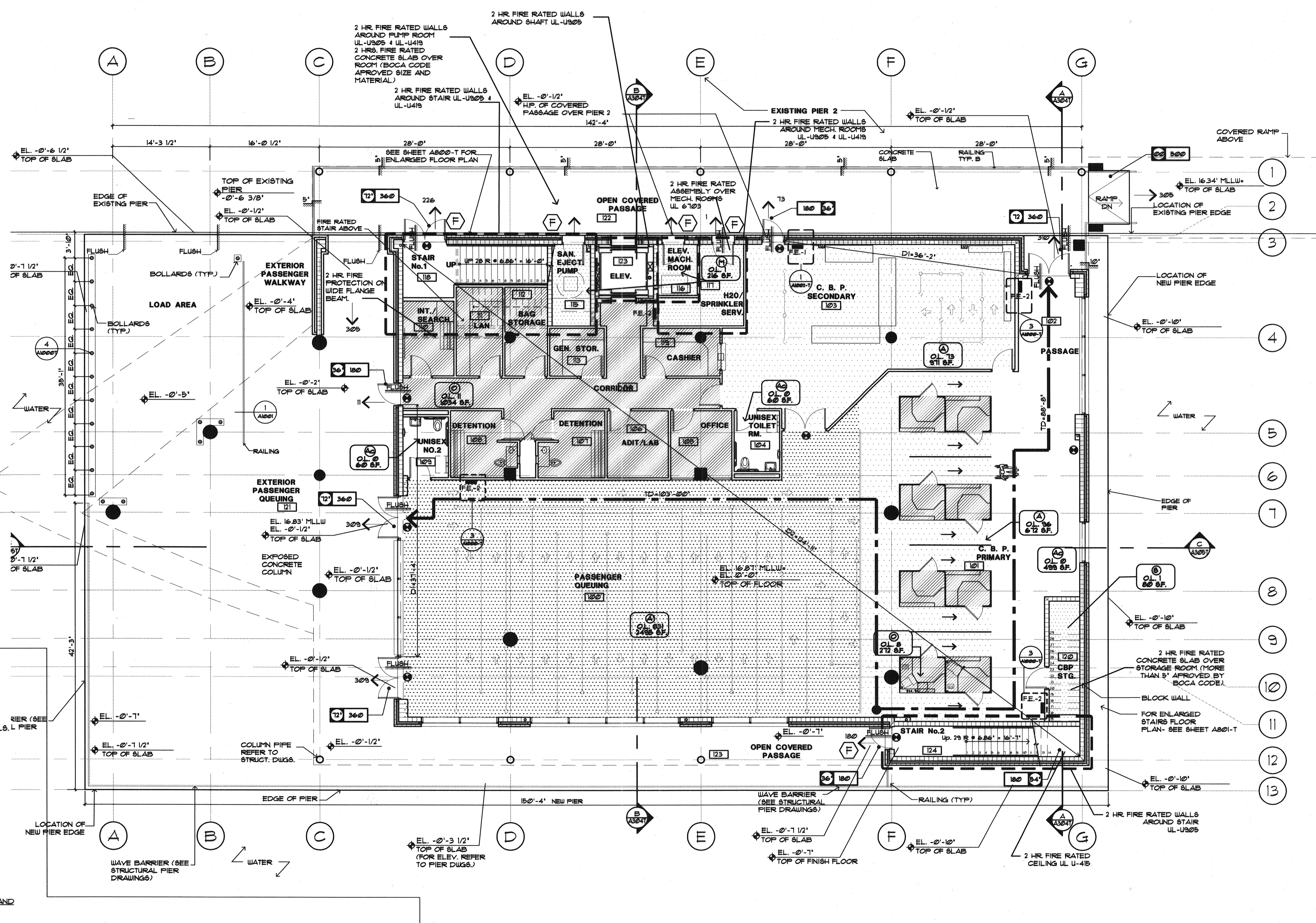
2 LEVELS + 1 (504.2 BOCA) = 3 FLOORS.

MAX. TRAVEL DIST.: 250'-0" SPRINKLERED

MAX. DEAD END: 20 FEET

No. OF EXITS REQD: 4 (OCCUPANT LOAD: MORE THAN 1000)

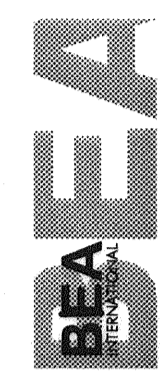
DISTANCE BETWEEN EXITS REQD: D2 > D1 / 3 (124" / 3 < 36") W/AUTOMATIC SPRINKLER SYSTEM



FIRST FLOOR LIFE SAFETY PLAN
 SCALE: 1/8" = 1'-0"

OCCUPATION TOTALS:
 1021 OCCUPANTS @ PIER FLOOR
 804 OCCUPANTS @ SECOND FLOOR
 3 OCCUPANTS @ MEZZANINE FLOOR
 1828 TOTAL OCCUPANTS

IN ASSOCIATION WITH:
 GORRILL-PALMER CONSULTING ENGINEERS
 PERAKOVICH, NOTTINGHAM, & DRAKE
 ARCHITECTS
 HALEY & ALDRICH



STATE OF MAINE
 DEPARTMENT OF TRANSPORTATION
 PROJECT NUMBER 009215.00



PROJ. MANAGER	PAUL POTTLE
DESIGN-DETAILED	
CHECKED-REVIEWED	
DESIGN-DETAILED	
DESIGN-DETAILED	
REVISIONS 1	
REVISIONS 2	
REVISIONS 3	
REVISIONS 4	
FIELD CHANGES	

CITY OF PORTLAND
 OCEAN GATEWAY PHASE 1
 LIFE SAFETY PLAN

A101-T