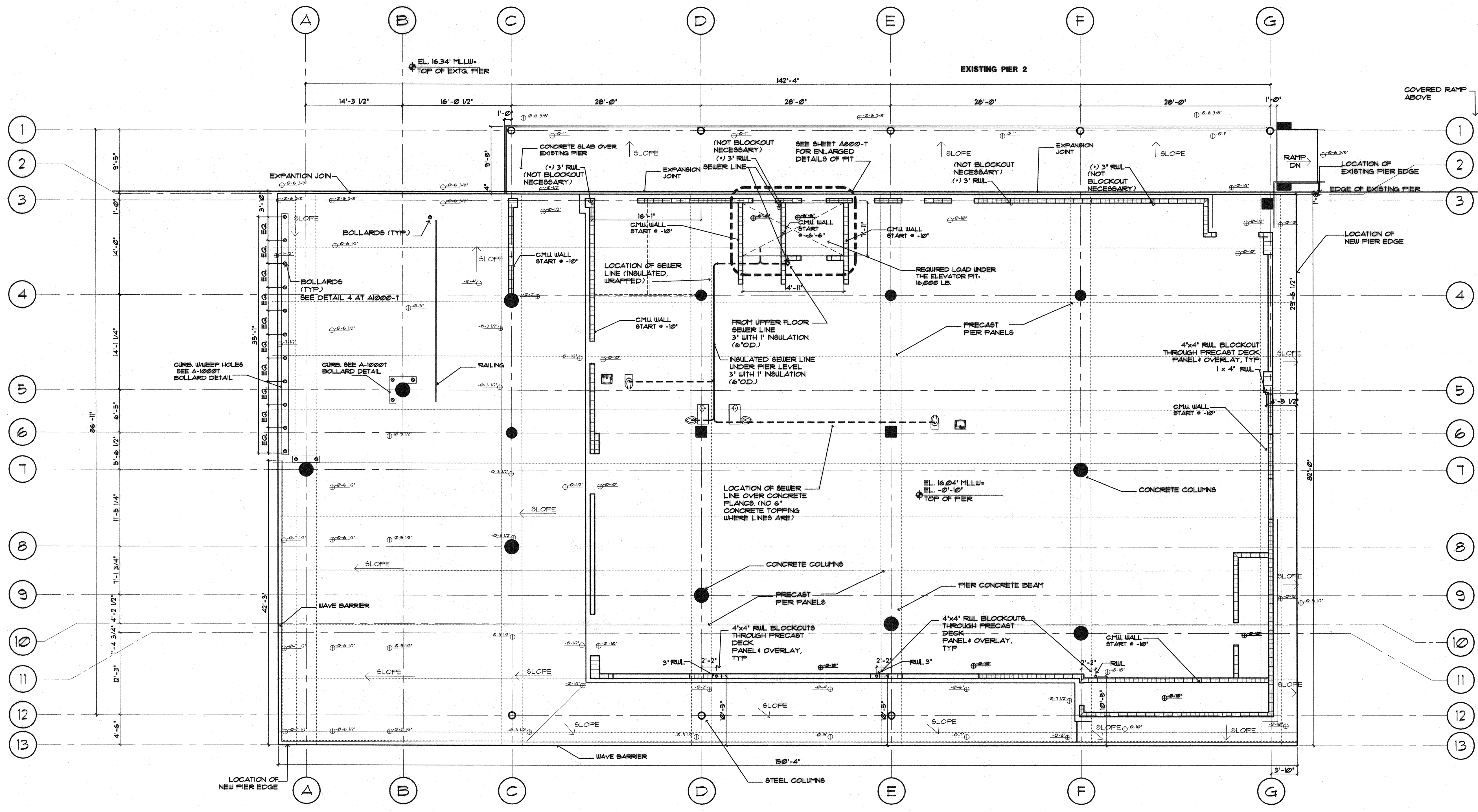


Filename: \\server1\projects\02-0818 Maine Int Ferry Terminal\PHASE 1\Architecture\FINAL CONSTRUCTION DOCUMENTS\TERMINAL BUILDING\20343802-T-A100.dwg, Oct.07, 2004 - 5:37pm



NOTES
 * RULS AT GRID LINE 3 DO NOT NEED ANY BLOCKOUT ON THE PIER SLAB
 FOR EXACT DIMENSION OF PIER SEE PIER DRAWINGS

BEA
 BEA ASSOCIATES
 CONSULTING ENGINEERS / ARCHITECTS
 PERATROVICH, KOTINGHAM, & BERAGE
 WINTON SCOTT ARCHITECTS
 HALEY & ALDRICH

STATE OF MAINE
 DEPARTMENT OF TRANSPORTATION
 PROJECT NUMBER 009215.00
 PIN 009215.00



PROJ. MANAGER PAUL POTTE	DATE
DESIGN-DETAILED	
CHECKED-REVIEWED	
DESIGN-DETAILED	
DESIGN-DETAILED	
REVISIONS 1	
REVISIONS 2	
REVISIONS 3	
REVISIONS 4	
FIELD CHANGES	

CITY OF PORTLAND
 OCEAN GATEWAY PHASE 1
 PIER LEVEL PLAN

A100-T