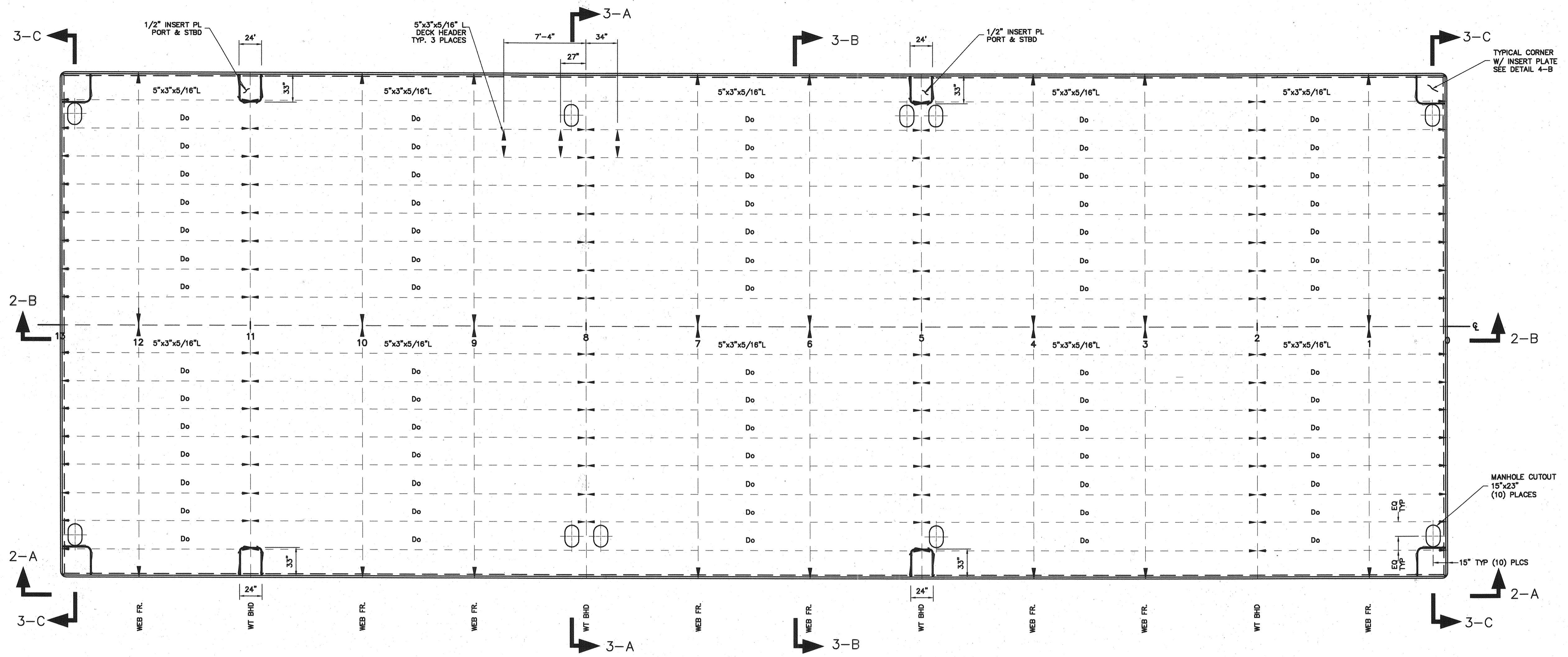
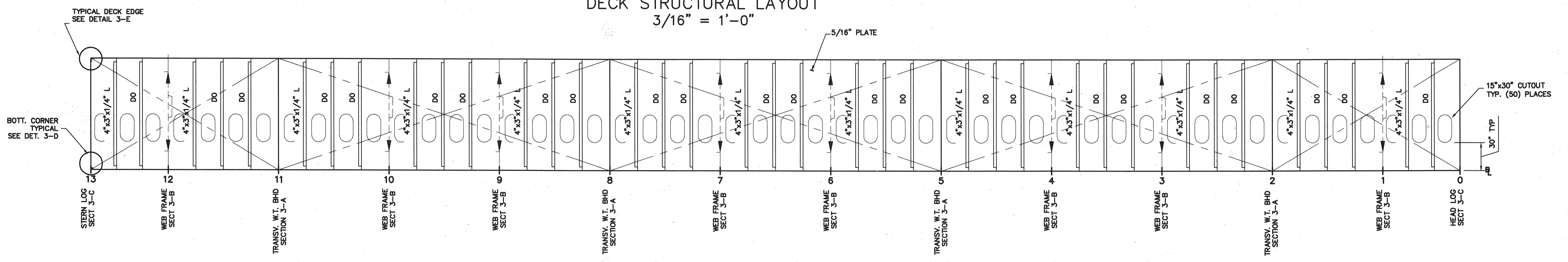


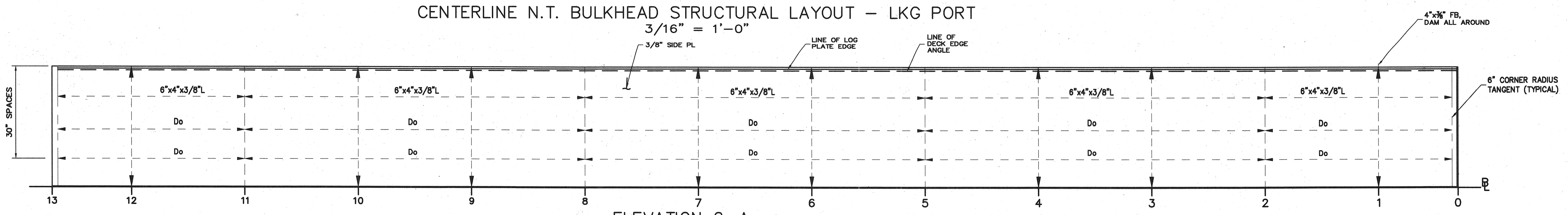
9/30/04
 Filename: 20343802-M-W316-ALT-100



PLAN 2-C
 DECK STRUCTURAL LAYOUT
 3/16" = 1'-0"



ELEVATION 2-B
 CENTERLINE N.T. BULKHEAD STRUCTURAL LAYOUT - LKG PORT
 3/16" = 1'-0"

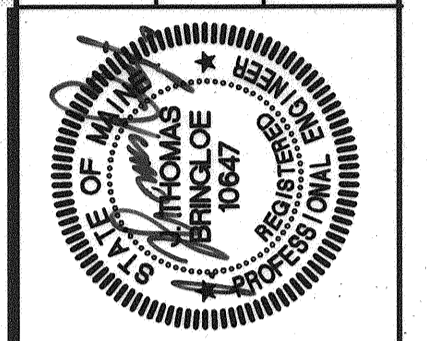


ELEVATION 2-A
 STBD SIDE STRUCTURAL LAYOUT (PORT MIRRORED)
 3/16" = 1'-0"

1201 Western Avenue, Suite 200
 Portland, ME 04102-2521
 TEL: 206.683.7850
 FAX: 206.683.3117
 WEB: www.glosten.com

THE GLOSTEN ASSOCIATES
 Consulting Engineers Serving the Maritime Community

STATE OF MAINE
 DEPARTMENT OF TRANSPORTATION
 PROJECT NUMBER 009215.00
 PIN
 009215.00



PROJ. MANAGER	PAUL POTTE	DATE	02/25/04
DESIGN-DETAILED	IRBL	CHECKED-REVIEWED	JTB
DESIGN2-DETAILED	IRBL	DESIGN2-REVIEWED	IRBL
DESIGN3-DETAILED	IRBL	DESIGN3-REVIEWED	IRBL
REVISIONS 1		REVISIONS 2	
REVISIONS 2		REVISIONS 3	
REVISIONS 3		REVISIONS 4	
REVISIONS 4		FIELD CHANGES	

CITY OF PORTLAND
 OCEAN GATEWAY PHASE 1
 PIER 2 BERTH 2
 STRUCTURAL PLAN & ELEVATION

W316-M
 ALT.
 121 OF 288

ALTERNATE No. 4