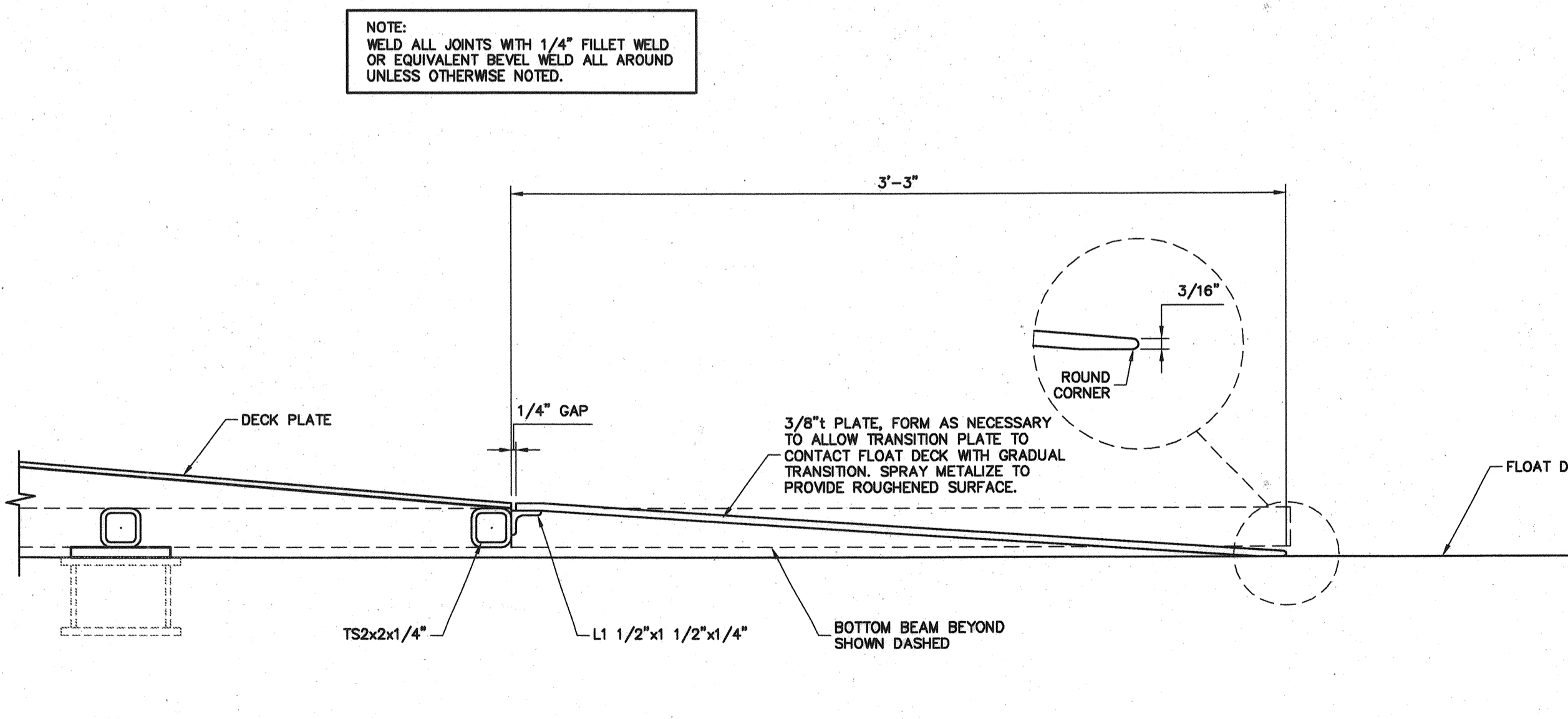
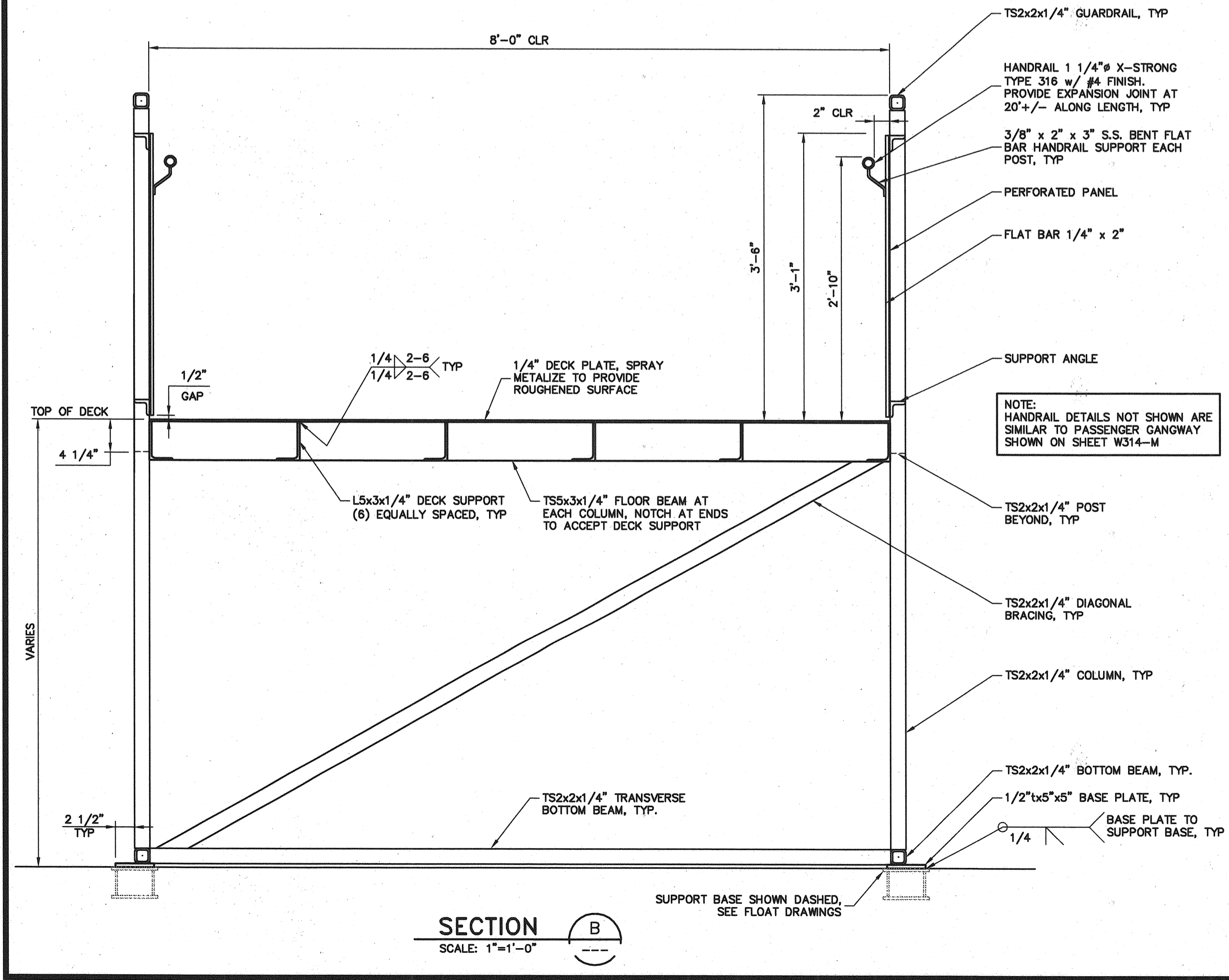
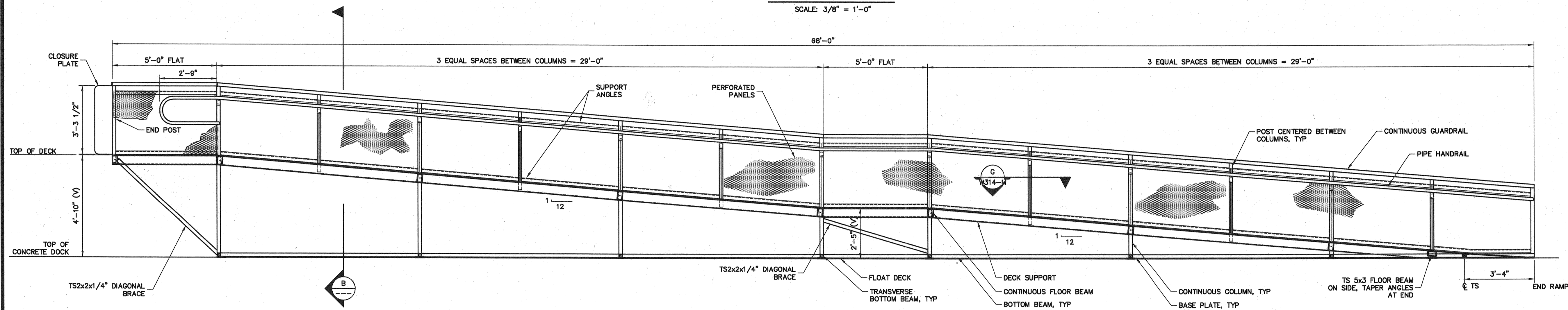
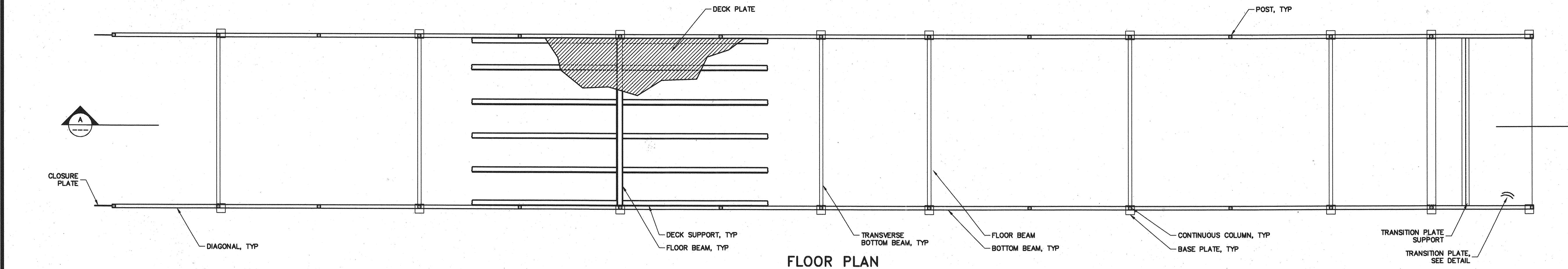


8/30/04
Filename: 20343802-M-W313-ALT-100



NOTE: WELD ALL JOINTS WITH 1/4" FILLET WELD OR EQUIVALENT BEVEL WELD ALL AROUND UNLESS OTHERWISE NOTED.

NOTE: HANDRAIL DETAILS NOT SHOWN ARE SIMILAR TO PASSENGER GANGWAY SHOWN ON SHEET W314-M

811 First Avenue, Suite 570
Seattle, Washington 98104
Phone: (206) 624-1387
Fax: (206) 624-1388
E-Mail: mail@pndea.com

INCORPORATED
ENGINEERS

STATE OF MAINE
DEPARTMENT OF TRANSPORTATION
PROJECT NUMBER 009215.00
PIN
009215.00

PROJ. MANAGER	PAUL POTTLE	DATE	09/01/04
DESIGN-DETAILED	TMB	BY	DH
CHECKED-REVIEWED	RJ	DATE	09/01/04
DESIGN-DETAILED2	DP	BY	DP
DESIGN-DETAILED3		DATE	
REVISIONS 1		SIGNATURE	
REVISIONS 2		P.E. NUMBER	12669
REVISIONS 3		DATE	
REVISIONS 4			
FIELD CHANGES			

CITY OF PORTLAND
OCEAN GATEWAY PHASE 1
PIER 2 BERTH 2
FLOAT ACCESS RAMP

W313-M
ALT.
118 OF 288

ALTERNATE No. 4